

COMMONWEALTH OF AUSTRALIA

DEPARTMENT OF NATIONAL DEVELOPMENT

BUREAU OF MINERAL RESOURCES, GEOLOGY AND GEOPHYSICS

RECORD No. 1965/30

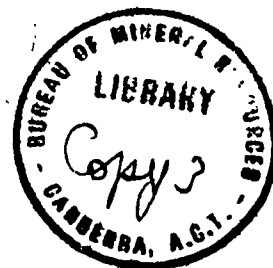
060359⁺

Copy 3

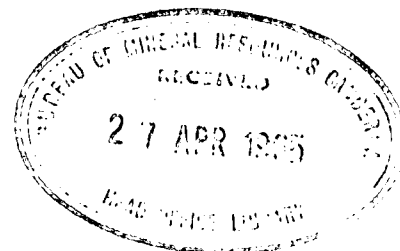
MAPS SHOWING THE
RESULTS OF AN AIRBORNE MAGNETIC
AND RADIOMETRIC SURVEY OF THE
SOUTHERN CROSS 1:250,000 AREA.

W A 1957

Map Nos. G 247- 8
G 247- 9
G 247-10
G 247-11



Scale 1:126,720



The information contained in this report has been obtained by the Department of National Development as part of the policy of the Commonwealth Government to assist in the exploration and development of mineral resources. It may not be published in any form or used in a company prospectus or statement without the permission in writing of the Director, Bureau of Mineral Resources, Geology and Geophysics.

COMMONWEALTH OF AUSTRALIA

DEPARTMENT OF NATIONAL DEVELOPMENT

BUREAU OF MINERAL RESOURCES, GEOLOGY AND GEOPHYSICS

RECORD No. 1965/30

MAPS SHOWING THE
RESULTS OF AN AIRBORNE MAGNETIC
AND RADIOMETRIC SURVEY OF THE
SOUTHERN CROSS 1 : 250,000 AREA,

W A 1957

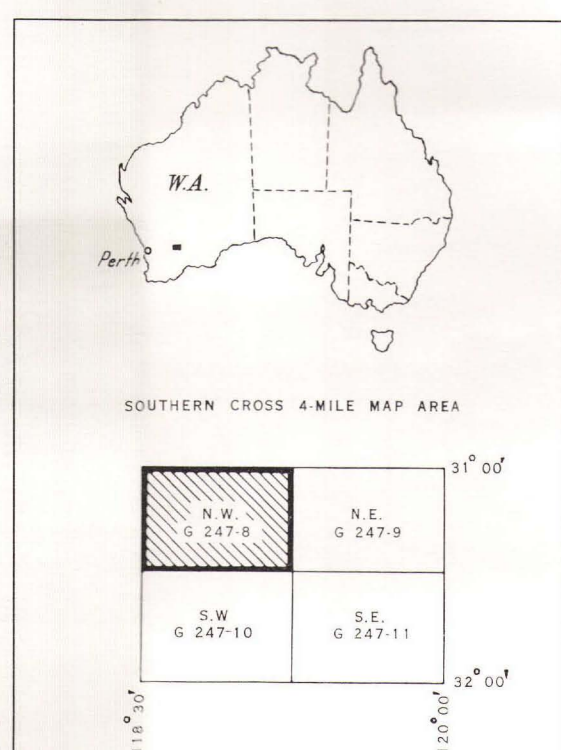
Map Nos. *G 247- 8*
 G 247- 9
 G 247-10
 G 247-11

Scale 1 : 126,720

The information contained in this report has been obtained by the Department of National Development as part of the policy of the Commonwealth Government to assist in the exploration and development of mineral resources. It may not be published in any form or used in a company prospectus or statement without the permission in writing of the Director, Bureau of Mineral Resources, Geology and Geophysics.



LOCATION DIAGRAM



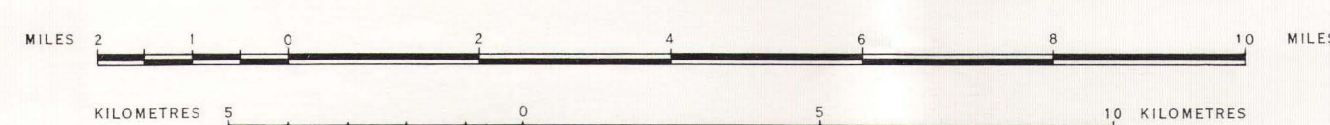
MAP DATA

PROJECTION:- Transverse Mercator Australian Series.
CONTROL & DETAIL:- After Western Australian Department of Lands and Surveys photo scale compilations.
RELIABILITY:- Planimetric detail: Reliable.
Flight lines: Accuracy is generally within 100 yards.

MAP SHOWING

TOTAL MAGNETIC INTENSITY
MEASURED BY AIRBORNE MAGNETOMETER
AND
RADIOMETRIC ANOMALIES
DETECTED BY AIRBORNE SCINTILLOGRAPH

SCALE



LEGEND

TOPOGRAPHICAL DATA

- River or Creek
- Highway
- Road or Track
- Railway
- Fence
- Telegraph line
- Named place
- ✕ Mine
- ✕ Aerodrome
- ✕ Rock outcrop

MAGNETIC DATA

- Magnetic contours
- Magnetic Low
- Contour/Flight-line intersections

SCINTILLOGRAPH DATA

- Anomaly

EXPLANATORY NOTES

This map was compiled from an airborne survey of the Southern Cross 4-mile area conducted by Bureau of Mineral Resources during September and October 1956. The objects of the survey were (a) to delineate magnetic anomalies which might be associated with mineral deposits or reveal structural trends in the geology of the area and (b) to indicate areas in which uranium minerals might occur.

The survey was made at an altitude of 300' above ground level along lines spaced one mile apart. The height of the aircraft was controlled through a radio altimeter. Photomosaic assemblies were used as a visual aid to navigation and the actual course of the aircraft was plotted from vertical photography taken with a 35-mm camera during flight.

The total magnetic intensity was continuously recorded by an airborne magnetometer installed in a DC3 aircraft. The data remain uncorrected for a regional gradient in total magnetic field of 7.5 gammas per mile in a direction S.5° E.

The gamma radiation from the ground was recorded continuously along flight lines by an airborne scintillograph. Anomalies marked on the map indicate where the radioactive intensity was substantially greater than the average intensity of the surrounding area.

No claim is made that the anomalies correspond to uranium deposits. A low-level scintillograph survey by an Auster aircraft was carried out to determine which anomalies warrant investigation on the ground. It is recommended that ground follow-up for uranium minerals should not be undertaken until the results of the Auster survey are inspected.

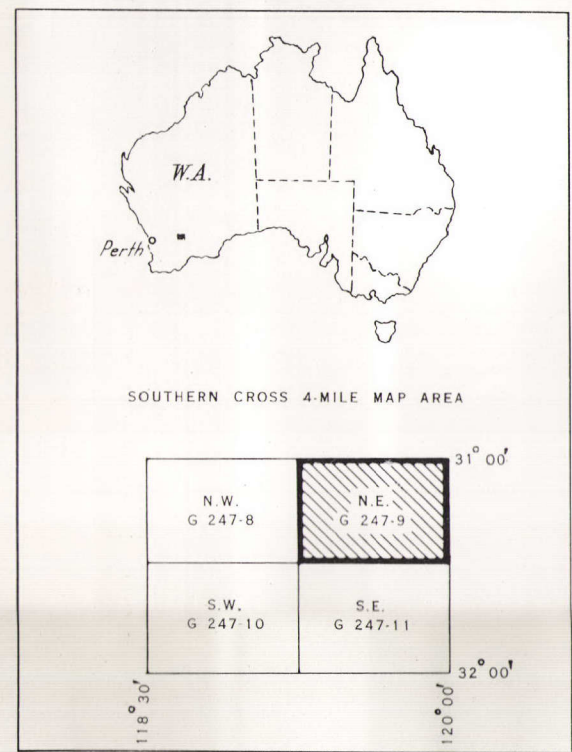
SOUTHERN CROSS - N.E.
WESTERN AUSTRALIA

AUSTRALIA 1:126,720

ZONE 2, H/50/16/498E, 499, 508E, 509.



LOCATION DIAGRAM



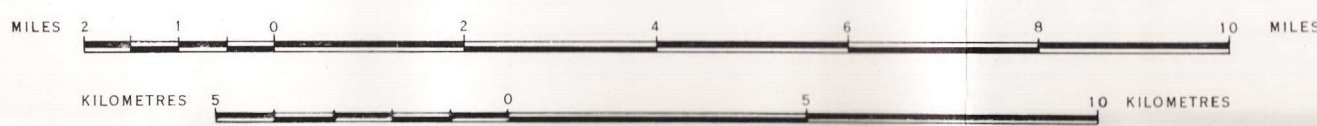
MAP DATA

PROJECTION:- Transverse Mercator Australian Series.
CONTROL & DETAIL:- After Western Australian Department of Lands and Surveys photo scale compilations.
RELIABILITY:- Planimetric detail: Reliable.
Flight lines: Accuracy is generally within 100 yards.

MAP SHOWING

TOTAL MAGNETIC INTENSITY
MEASURED BY AIRBORNE MAGNETOMETER
AND
RADIOMETRIC ANOMALIES
DETECTED BY AIRBORNE SCINTILLOGRAPH

SCALE



MAGNETIC CONTOUR INTERVAL 50 GAMMAS

LEGEND

TOPOGRAPHICAL DATA

- River or Creek
- Highway
- Road or Track
- Railway
- Fence
- Telegraph line
- Named place
- Mine
- Aerodrome
- Rock outcrop

MAGNETIC DATA

- Magnetic contours
- Magnetic 'Low'
- Contour/Flight-line intersections

SCINTILLOGRAPH DATA

- Anomaly

EXPLANATORY NOTES

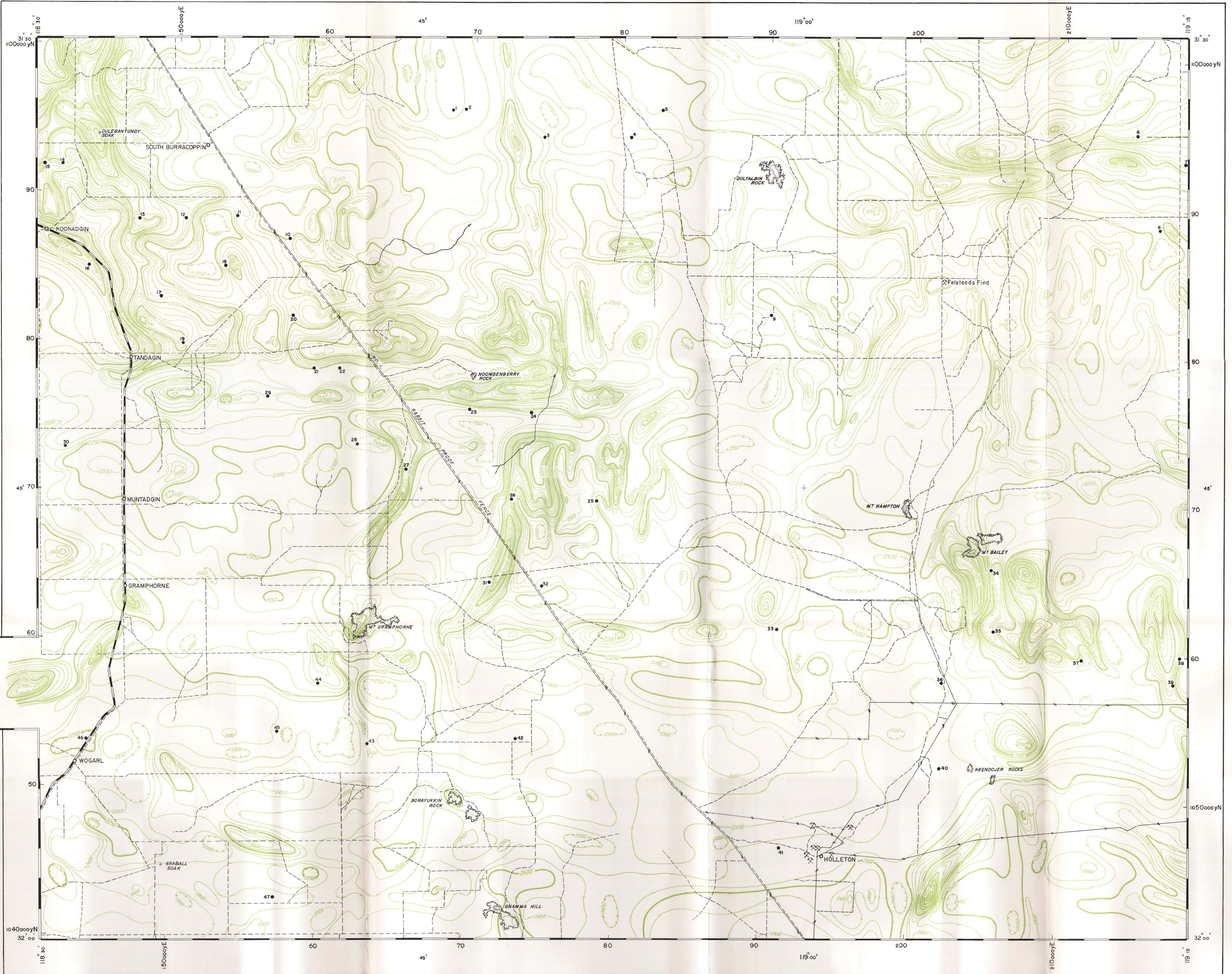
This map was compiled from an airborne survey of the Southern Cross 4-mile area conducted by Bureau of Mineral Resources during September and October 1956. The objects of the survey were (A) to delineate magnetic anomalies which might be associated with mineral deposits or reveal structural trends in the geology of the area and (B) to indicate areas in which uranium minerals might occur.

The survey was made at an altitude of 500' above ground level along lines spaced one mile apart. The height of the aircraft was controlled through a radio altimeter. Photostatic images were used as a visual aid to navigation and the actual course of the aircraft was plotted from vertical photography taken with a 35-mm camera during flight.

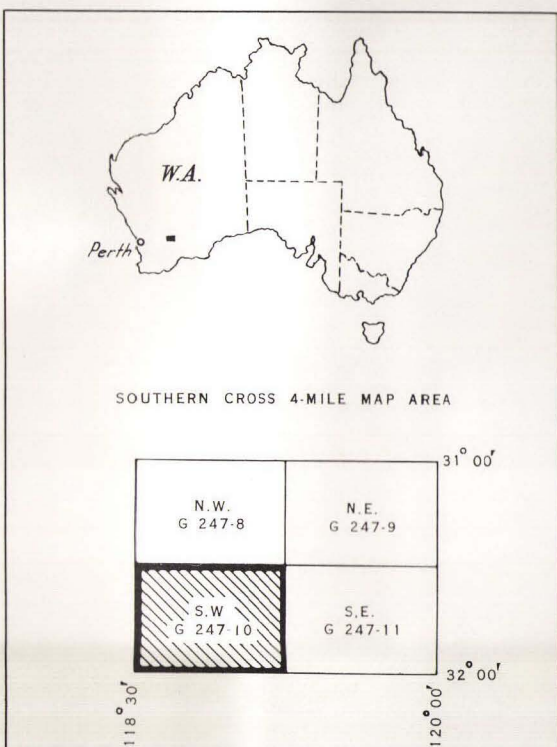
The total magnetic intensity was continuously recorded by an airborne magnetometer installed in a DC3 aircraft. The data remain uncorrected for a regional gradient in total magnetic field of 7.5 gammas per mile in a direction S.5° E.

The gamma radiation from the ground was recorded continuously along flight lines by an airborne scintillograph. Anomalies marked on the map indicate where the radioactive intensity was substantially greater than the average intensity of the surrounding area.

No claim is made that the anomalies correspond to uranium deposits. A low-level scintillograph survey by an Auster aircraft was carried out to determine which anomalies warrant investigation on the ground. It is recommended that ground follow-up for uranium minerals should not be undertaken until the results of the Auster survey are inspected.



LOCATION DIAGRAM



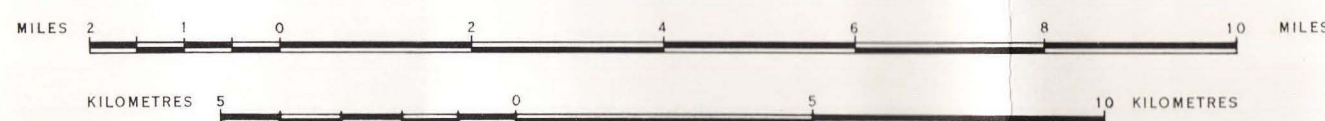
MAP DATA

PROJECTION:- Transverse Mercator Australian Series.
CONTROL & DETAIL:- After Western Australian Department of Lands and Surveys photo scale compilations.
RELIABILITY:- Planimetric detail: Reliable.
Flight lines: Accuracy is generally within 100 yards.

MAP SHOWING

TOTAL MAGNETIC INTENSITY
MEASURED BY AIRBORNE MAGNETOMETER
AND
RADIOMETRIC ANOMALIES
DETECTED BY AIRBORNE SCINTILLOGRAPH

SCALE



MAGNETIC CONTOUR INTERVAL 50 GAMMAS

LEGEND

TOPOGRAPHICAL DATA

- River or Creek
- Highway
- Road or Track
- Railway
- Fence
- Telegraph line
- Named place
- Mine
- Aerodrome
- Rock outcrop

MAGNETIC DATA

- Magnetic contours
- Magnetic Low
- Contour/Flight-line intersections

SCINTILLOGRAPH DATA

- Anomaly

EXPLANATORY NOTES

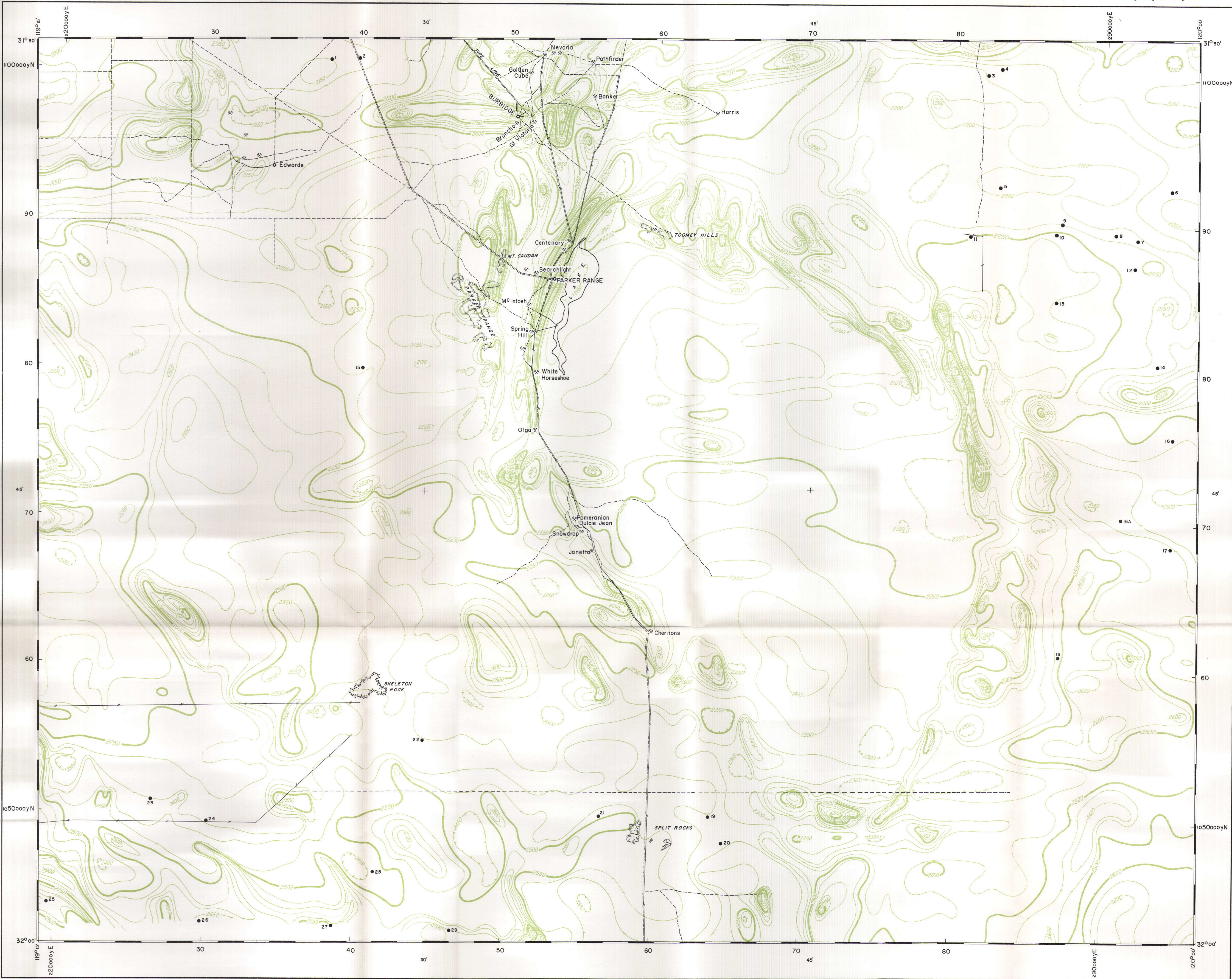
This map was compiled from an airborne survey of the Southern Cross 4-mile area conducted by Bureau of Mineral Resources during September and October 1956. The objects of the survey were (A) to delineate magnetic anomalies which might be associated with mineral deposits or reveal structural trends in the geology of the area and (B) to indicate areas in which uranium minerals might occur.

The survey was made at an altitude of 500' above ground level along lines spaced one mile apart. The height of the aircraft was controlled through a radio altimeter. Photomosaic assemblies were used as a visual aid to navigation and the actual course of the aircraft was plotted from vertical photography taken with a 35-mm camera during flight.

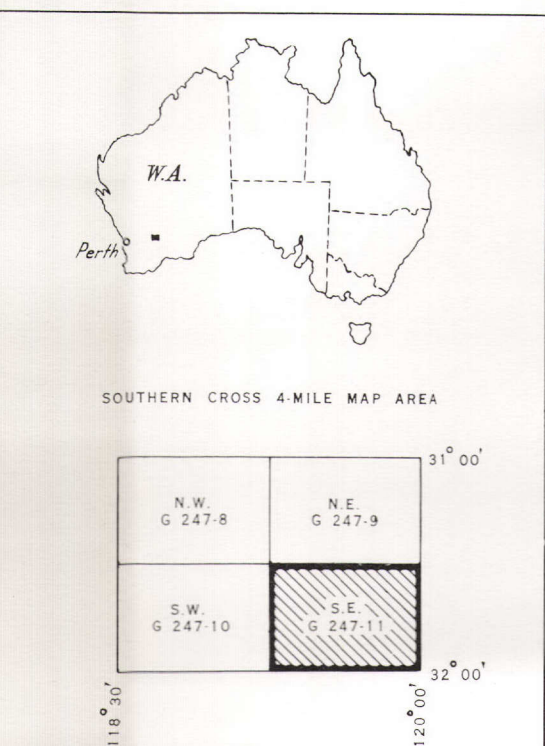
The total magnetic intensity was continuously recorded by an airborne magnetometer installed in a DC3 aircraft. The data remain uncorrected for a regional gradient in total magnetic field of 7.5 gammas per mile in a direction S.5° E.

The gamma radiation from the ground was recorded continuously along flight lines by an airborne scintillograph. Anomalies marked on the map indicate where the radioactive intensity was substantially greater than the average intensity of the surrounding area.

No claim is made that the anomalies correspond to uranium deposits. A low-level scintillograph survey by an Auster aircraft was carried out to determine which anomalies warrant investigation on the ground. It is recommended that ground follow-up for uranium minerals should not be undertaken until the results of the Auster survey are inspected.



LOCATION DIAGRAM



MAP DATA

PROJECTION:- Transverse Mercator Australian Series.
CONTROL & DETAIL:- After Western Australian Department of Lands and Surveys photo scale compilations.
RELIABILITY:- Planimetric detail: Reliable.
Flight lines: Accuracy is generally within 100 yards.

MAP SHOWING

TOTAL MAGNETIC INTENSITY

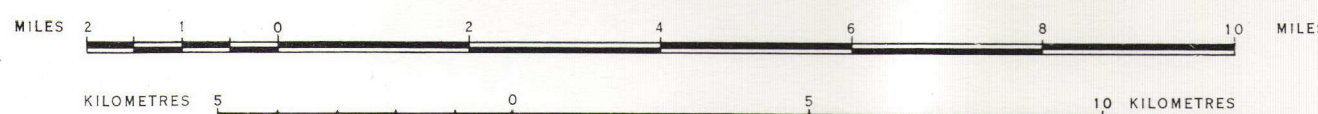
MEASURED BY AIRBORNE MAGNETOMETER

AND

RADIOMETRIC ANOMALIES

DETECTED BY AIRBORNE SCINTILLOGRAPH

SCALE



MAGNETIC CONTOUR INTERVAL 50 GAMMAS

LEGEND

TOPOGRAPHICAL DATA

- River or Creek
- Highway
- Road or Track
- Railway
- Fence
- Telegraph line
- o ----- Named place
- o ----- Mine
- o ----- Aerodrome
- o ----- Rock outcrop

MAGNETIC DATA

- Magnetic contours
- Magnetic Low
- Contour/Flight-line intersections

SCINTILLOGRAPH DATA

- o ----- Anomaly

EXPLANATORY NOTES

This map was compiled from an airborne survey of the Southern Cross 4-mile area conducted by Bureau of Mineral Resources during September and October 1956. The objects of the survey were (A) to delineate magnetic anomalies which might be associated with mineral deposits or reveal structural trends in the geology of the area and (B) to indicate areas in which uranium minerals might occur.

The survey was made at an altitude of 500' above ground level along lines spaced one mile apart. The height of the aircraft was controlled through a radio altimeter. Photomosaic assemblies were used as a visual aid to navigation and the actual course of the aircraft was plotted from vertical photography taken with a 35-mm camera during flight.

The total magnetic intensity was continuously recorded by an airborne magnetometer installed in a DC3 aircraft. The data remain uncorrected for a regional gradient in total magnetic field of 7.5 gammas per mile in a direction S 3° E.

The gamma radiation from the ground was recorded continuously along flight lines by an airborne scintillograph. Anomalies marked on the map indicate where the radioactive intensity was substantially greater than the average intensity of the surrounding area.

No claim is made that the anomalies correspond to uranium deposits. A low-level scintillograph survey by an Auster aircraft was carried out to determine which anomalies warrant investigation on the ground. It is recommended that ground follow-up for uranium minerals should not be undertaken until the results of the Auster survey are inspected.