

1965/36
B

COMMONWEALTH OF AUSTRALIA

DEPARTMENT OF NATIONAL DEVELOPMENT

BUREAU OF MINERAL RESOURCES, GEOLOGY AND GEOPHYSICS

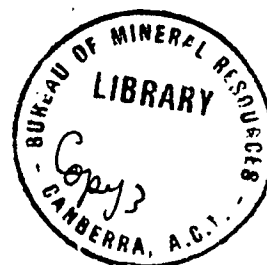
RECORD No. 1965/36

BUREAU OF MINERAL RESOURCES GEOPHYSICAL LIBRARY Ref. <u>B</u>

MAPS SHOWING THE
RESULTS OF AN AIRBORNE MAGNETIC
AND RADIOMETRIC SURVEY OF THE
NORSEMAN 1:250,000 AREA,

W A 1957

501456



Map Nos. G 334-10
 G 334-11
 G 334-12
 G 334-13

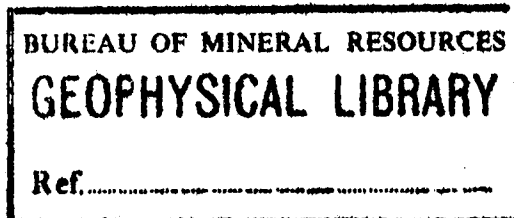
Scale 1:126,720

The information contained in this report has been obtained by the Department of National Development as part of the policy of the Commonwealth Government to assist in the exploration and development of mineral resources. It may not be published in any form or used in a company prospectus or statement without the permission in writing of the Director, Bureau of Mineral Resources, Geology and Geophysics.

DEPARTMENT OF NATIONAL DEVELOPMENT

BUREAU OF MINERAL RESOURCES, GEOLOGY AND GEOPHYSICS

RECORD No. 1965/36

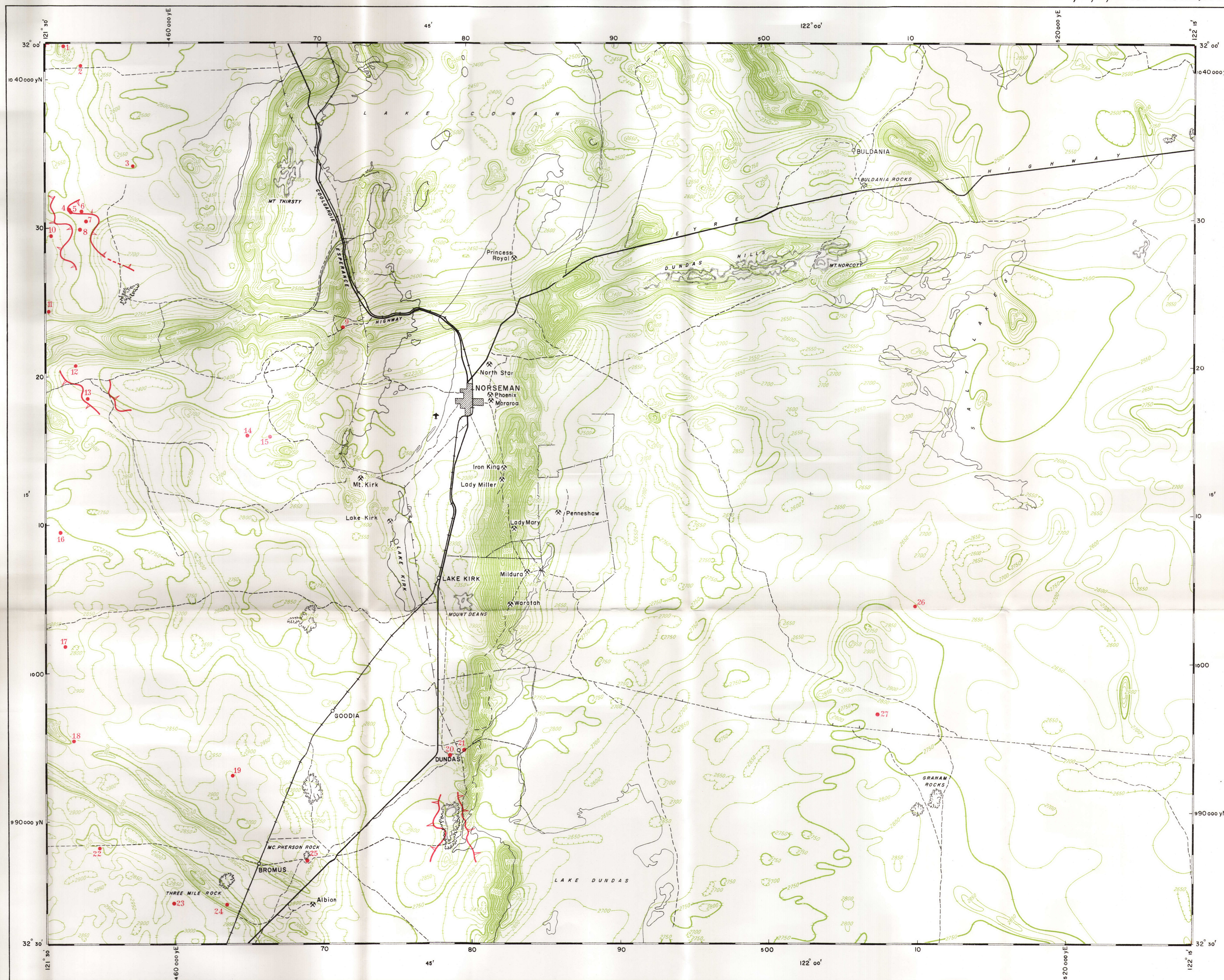


MAPS SHOWING THE
RESULTS OF AN AIRBORNE MAGNETIC
AND RADIOMETRIC SURVEY OF THE
NORSEMAN 1 : 250,000 AREA,

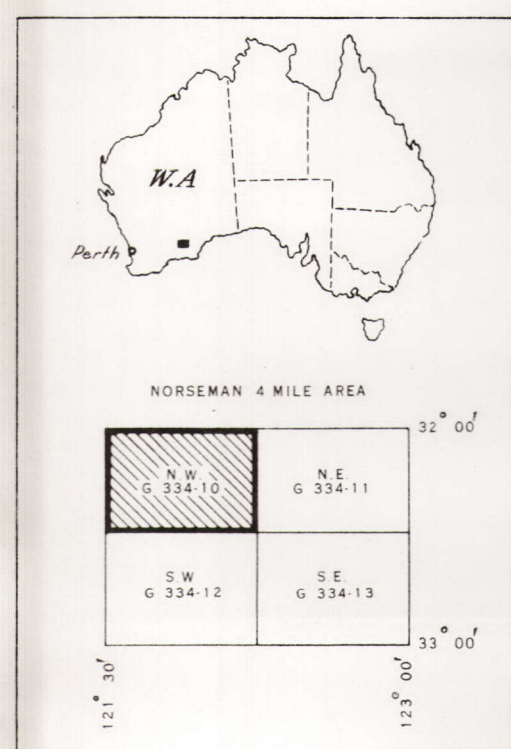
W A 1957

Map Nos. *G 334-10*
 G 334-11
 G 334-12
 G 334-13

Scale 1 : 126,720



LOCATION DIAGRAM



MAP DATA

PROJECTION - Transverse Mercator Australian Series
CONTROL & DETAIL - After Western Australian Department of Lands and Surveys
RELIABILITY - Planimetric detail: Accurate
Flight lines: Accuracy is generally within 100 yards

MAP SHOWING

TOTAL MAGNETIC INTENSITY

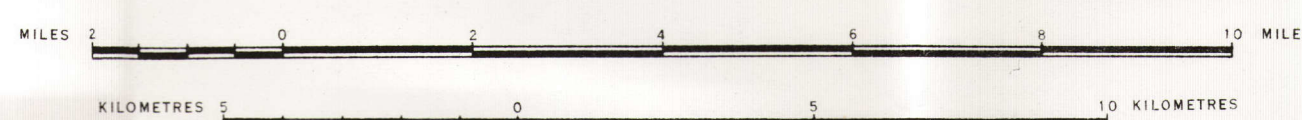
MEASURED BY AIRBORNE MAGNETOMETER

AND

RADIOMETRIC ANOMALIES

DETECTED BY AIRBORNE SCINTILLOGRAPH

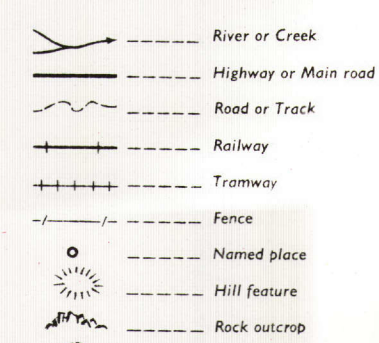
SCALE



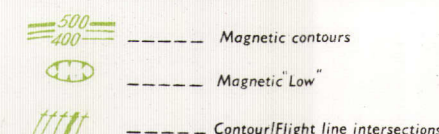
MAGNETIC CONTOUR INTERVAL 50 GAMMAS

LEGEND

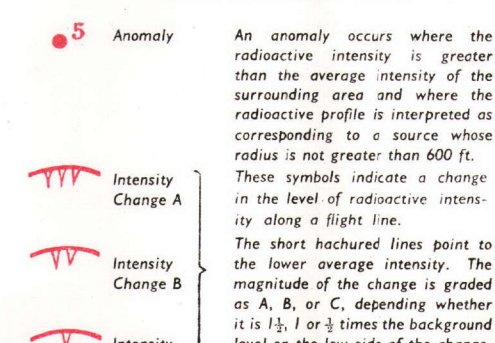
TOPOGRAPHICAL DATA



MAGNETIC DATA



SCINTILLOGRAPH DATA



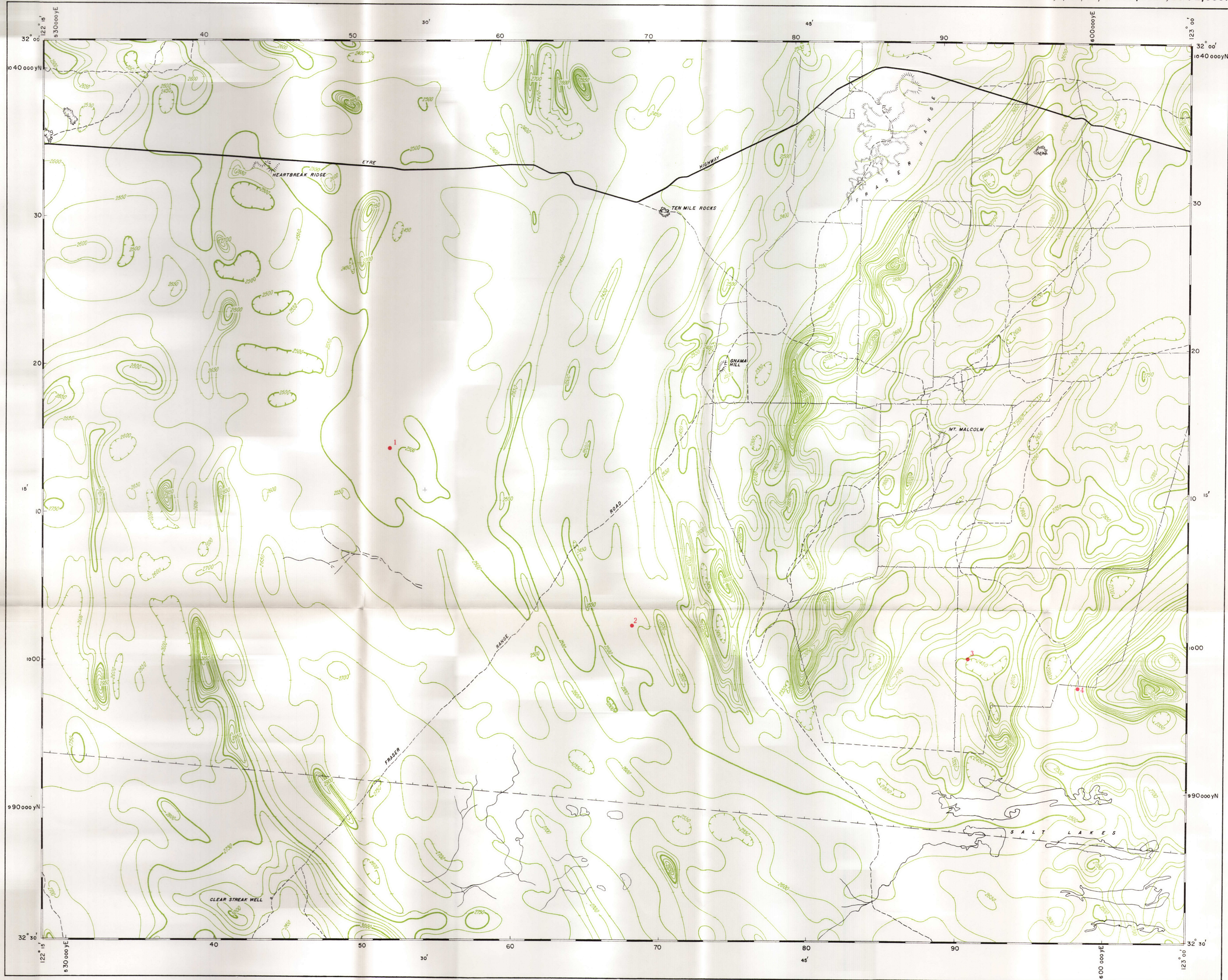
EXPLANATORY NOTES

This map was compiled from an airborne survey of the Norseman 4-mile area flown by the Bureau of Mineral Resources between May and July 1959. The objects of the survey were (a) to delineate magnetic anomalies which might be associated with mineral deposits or reveal structural trends in the geology of the area and (b) to indicate areas in which uranium minerals might occur, and (c) to record changes in the level of radiometric intensity, as an aid to geological mapping.

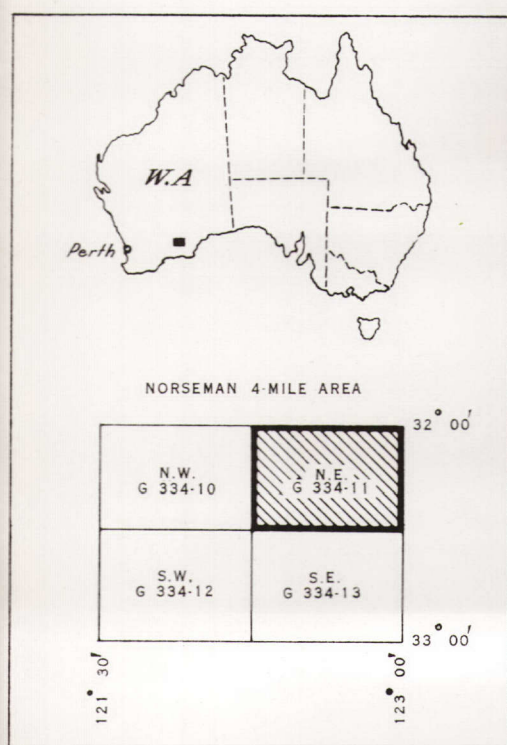
The survey was made with a D.C. 3 aircraft at an altitude of 500 feet above ground level along lines spaced one mile apart. The height of the aircraft was controlled through a radio altimeter. Aerial photographs were used for navigation and the actual course of the aircraft was recorded by a 35-mm camera operated during flight.

The total magnetic intensity was recorded continuously by an airborne magnetometer. The data remain uncorrected for a regional gradient in total magnetic field of 7.5 gammas per mile in a direction 5.5° E.

The gamma radiation from the ground was recorded continuously by an airborne scintillograph. No claim is made that the radiometric anomalies correspond to uranium deposits. Investigation on the ground would be necessary to determine the importance of the anomalies.



LOCATION DIAGRAM



MAP DATA

PROJECTION: Transverse Mercator Australian Series
CONTROL & DETAIL: After Western Australian Department of Lands and Surveys
RELIABILITY: Planimetric detail: Accurate
Flight lines: Accuracy is generally within 100 yards

MAP SHOWING

TOTAL MAGNETIC INTENSITY

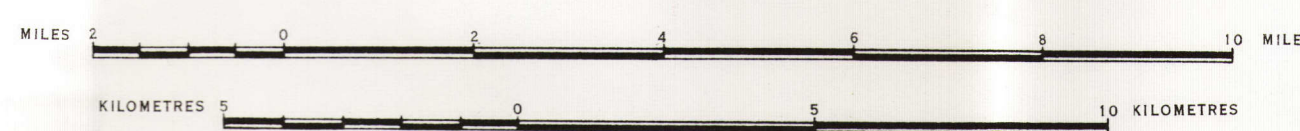
MEASURED BY AIRBORNE MAGNETOMETER

AND

RADIOMETRIC ANOMALIES

DETECTED BY AIRBORNE SCINTILLOGRAPH

SCALE



MAGNETIC CONTOUR INTERVAL 50 GAMMAS

LEGEND

TOPOGRAPHICAL DATA

- River or Creek
- Highway or Main road
- Road or Track
- Railway
- Tramway
- Fence
- Named place
- Hill feature
- Rock outcrop
- Mine

MAGNETIC DATA

- Magnetic contours
- Magnetic Low
- Contour/Flight line intersections

SCINTILLOGRAPH DATA

- Anomaly
- Intensity Change A
- Intensity Change B
- Intensity Change C

EXPLANATORY NOTES

This map was compiled from an airborne survey of the Norseman 4-mile area flown by the Bureau of Mineral Resources between May and July 1959. The objects of the survey were (a) to delineate magnetic anomalies which might be associated with mineral deposits or reveal structural trends in the geology of the area and (b) to indicate areas in which uranium minerals might occur, and (c) to record changes in the level of radioactive intensity, as an aid to geological mapping.

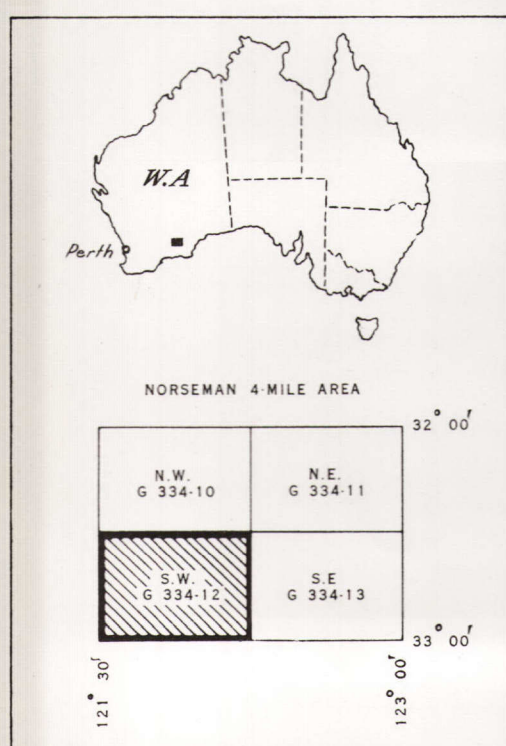
The survey was made with a D.C.3 aircraft at an altitude of 500 feet above ground level along lines spaced one mile apart. The height of the aircraft was controlled through a radio altimeter. Aerial photographs were used for navigation and the actual course of the aircraft was recorded by a 35-mm camera operated during flight.

The total magnetic intensity was recorded continuously by an airborne magnetometer. The data remain uncorrected for a regional gradient in total magnetic field of 7.5 gammas per mile in a direction 5.5° E.

The gamma radiation from the ground was recorded continuously by an airborne scintillograph. No claim is made that the radiometric anomalies correspond to uranium deposits. Investigation on the ground would be necessary to determine the importance of the anomalies.



LOCATION DIAGRAM



MAP DATA

PROJECTION:- Transverse Mercator Australian Series

CONTROL & DETAIL:-

After Western Australian Department of Lands and Surveys

RELIABILITY:- Planimetric detail: Accurate

Flight lines: Accuracy is generally within 100 yards

MAP SHOWING

TOTAL MAGNETIC INTENSITY

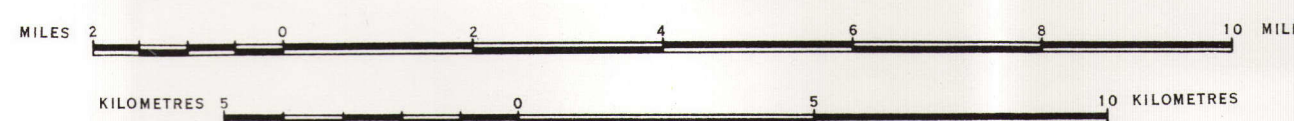
MEASURED BY AIRBORNE MAGNETOMETER

AND

RADIOMETRIC ANOMALIES

DETECTED BY AIRBORNE SCINTILLOGRAPH

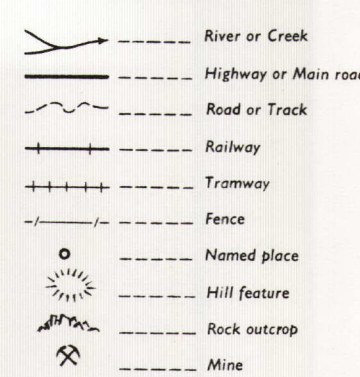
SCALE



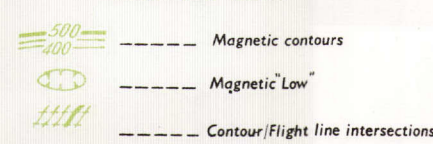
MAGNETIC CONTOUR INTERVAL 50 GAMMAS

LEGEND

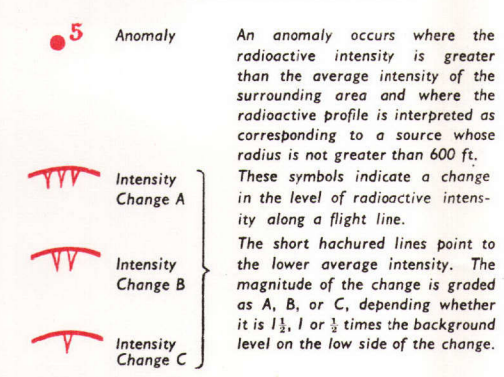
TOPOGRAPHICAL DATA



MAGNETIC DATA



SCINTILLOGRAPH DATA



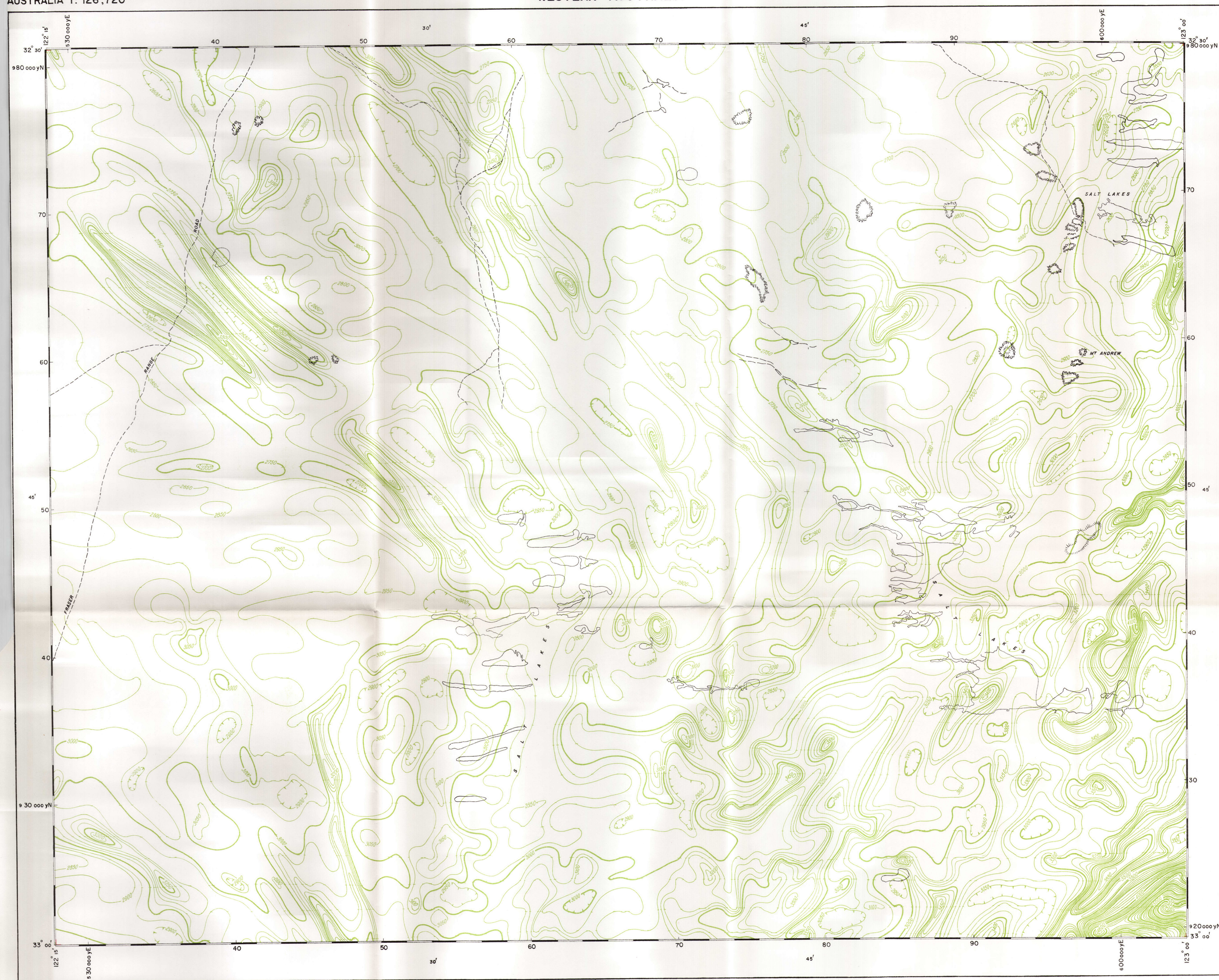
EXPLANATORY NOTES

This map was compiled from an airborne survey of the Norseman 4-mile area flown by the Bureau of Mineral Resources between May and July 1959. The objects of the survey were (a) to delineate magnetic anomalies which might be associated with mineral deposits or reveal structural trends in the geology of the area and (b) to indicate areas in which uranium minerals might occur, and (c) to record changes in the level of radioactive intensity, as an aid to geological mapping.

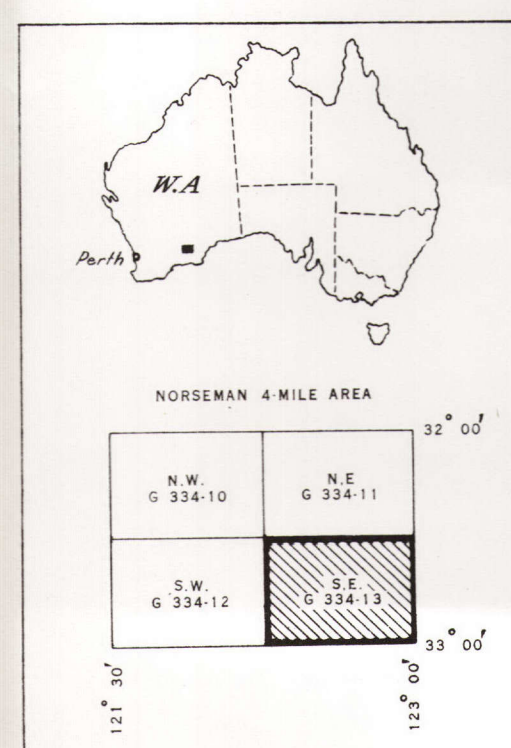
The survey was made with a D.C.3 aircraft at an altitude of 500 feet above ground level along lines spaced one mile apart. The height of the aircraft was controlled through a radio altimeter. Aerial photographs were used for navigation and the actual course of the aircraft was recorded by a 35-mm camera operated during flight.

The total magnetic intensity was recorded continuously by an airborne magnetometer. The data remain uncorrected for a regional gradient in total magnetic field of 7.5 gammas per mile in a direction 5.5° E.

The gamma radiation from the ground was recorded continuously by an airborne scintillograph. No claim is made that the radiometric anomalies correspond to uranium deposits. Investigation on the ground would be necessary to determine the importance of the anomalies.



LOCATION DIAGRAM



MAP DATA

PROJECTION: Transverse Mercator Australian Series

CONTROL & DETAIL: After Western Australian Department of Lands and Surveys

RELIABILITY: Planimetric detail: Accurate

Flight lines: Accuracy is generally within 100 yards

MAP SHOWING

TOTAL MAGNETIC INTENSITY

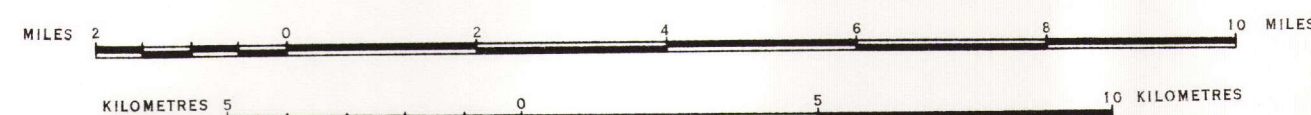
MEASURED BY AIRBORNE MAGNETOMETER

AND

RADIOMETRIC ANOMALIES

DETECTED BY AIRBORNE SCINTILLOGRAPH

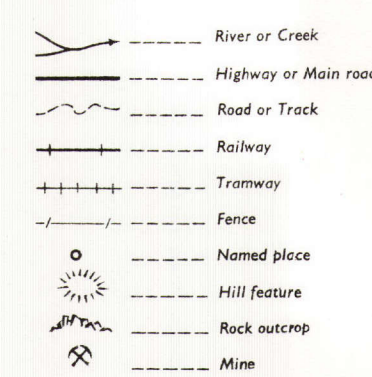
SCALE



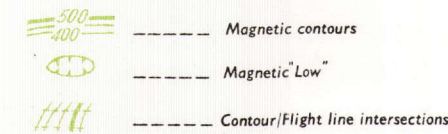
MAGNETIC CONTOUR INTERVAL 50 GAMMAS

LEGEND

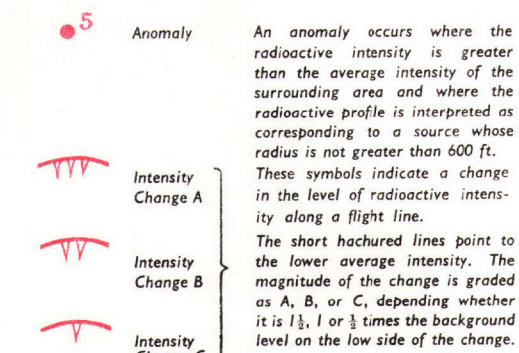
TOPOGRAPHICAL DATA



MAGNETIC DATA



SCINTILLOGRAPH DATA



EXPLANATORY NOTES

This map was compiled from an airborne survey of the Norseman 4-mile area flown by the Bureau of Mineral Resources between May and July 1959. The objects of the survey were (a) to delineate magnetic anomalies which might be associated with mineral deposits or reveal structural trends in the geology of the area and (b) to indicate areas in which uranium minerals might occur, and (c) to record changes in the level of radioactive intensity, as an aid to geological mapping.

The survey was made with a D.C. 3 aircraft at an altitude of 500 feet above ground level along lines spaced one mile apart. The height of the aircraft was controlled through a radio altimeter. Aerial photographs were used for navigation and the actual course of the aircraft was recorded by a 35-mm camera operated during flight.

The total magnetic intensity was recorded continuously by an airborne magnetometer. The data remain uncorrected for a regional gradient in total magnetic field of 7.5 gammas per mile in a direction 5.5° E.

The gamma radiation from the ground was recorded continuously by an airborne scintillograph. No claim is made that the radiometric anomalies correspond to uranium deposits. Investigation on the ground would be necessary to determine the importance of the anomalies.