

### Map Reliability

*Topographic information checked from 2001 satellite imagery, and supplemented using other sources in 2001.*

*This map was not field checked and some information may not be accurate.*

### About the NATMAP Series

*Geoscience Australia produces over 500 maps at 1:250 000 scale in this NATMAP series which covers Australia. They are used by professional and recreational users and are available both flat and folded. A corresponding data product, GEODATA TOPO- 250K is also available.*

*Your Feedback is Welcome*

*If you discover errors or omissions on the map, please let us know via the map amendments page on our web site or send your annotated map to us.*

We will replace your map with the

We value your assistance for the next edition.  
e-mail: [mapfeedback@ga.gov.au](mailto:mapfeedback@ga.gov.au)

## Acknowledgments

*Geoscience Australia gratefully acknowledges contributions to map content. Information is supplied by the Australian Government, State and local governments, private sector agencies and individuals. A comprehensive list is available from our web site.*

## Contact

Geoscience Australia  
GPO Box 378 Canberra ACT 2601  
Tel: 02 6249 9966 Fax: 02 6249 9960  
NATMAP Freecall: 1800 800 173  
Web: [www.ga.gov.au](http://www.ga.gov.au)

The Australian Government agency providing  
**SPATIAL INFORMATION FOR THE NATION**

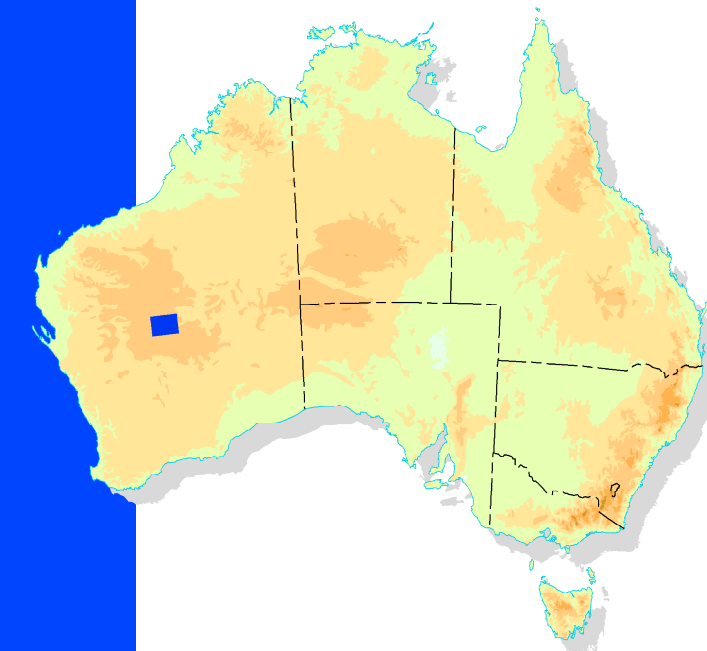


9 314231 100141

**NATMAP** **2001**  
**TOPOGRAPHIC MAP**  
**1:250 000 SCALE (1cm to 2.5km)**

2001

**Wiluna**  
WESTERN AUSTRALIA



PEAK HILL SG50-08	NABBERU SG51-05	STANLEY SG51-06
GLENGARRY SG50-12	<b>WILUNA SG51-09</b>	KINGSTON SG51-10
SANDSTONE SG50-16	SIR SAMUEL SG51-13	DUKETON SG51-14

***About this Map***

Projection.....Map Grid of Australia 1994 [MGA94]  
..... Universal Transverse Mercator on GRS80 ellipsoid  
Horizontal Datum.....Geocentric Datum of Australia 1994 (GDA94)  
..... equivalent to WGS84  
Vertical Datum.....Australian Height Datum (AHD)  
Horizontal Accuracy..... +/- 140 metres  
Vertical Accuracy..... +/- 25 metres  
Elevations in metres; 50 metre contour interval

True North (TN), Grid North (GN) and Magnetic North (MN) are shown diagrammatically for the centre of the map

Grid convergence 1°

Grid/Magnetic angle

MN is correct for 2002 and moves  
easterly by  $0.1^\circ$  in about 1 year

### *How to Quote a Grid Reference for a Particular Point*

Blue numbers on the map grid lines are 10 000 metre interval

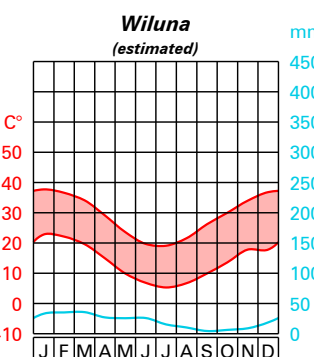
- Example:  $\frac{1}{2}$  Roto Wolf
1. Quote this map..... Wiluna
  2. Read letters identifying 100 000 metre square containing the point..... TL
  3. Locate the vertical grid line to the left of the point and read large number on the grid line..... 9
  4. Estimate tenths from the grid line to the point..... 6
  5. Locate the horizontal grid line below the point and read large number on the grid line..... 6
  6. Estimate tenths from the grid line to the point..... 2
- Thus the reference for  $\frac{1}{2}$  Roto Wolf is..... Wiluna TL9662
- 

100 000 metre  
square identification

SM	TM	UM
	TL	UL

Grid zone 51.

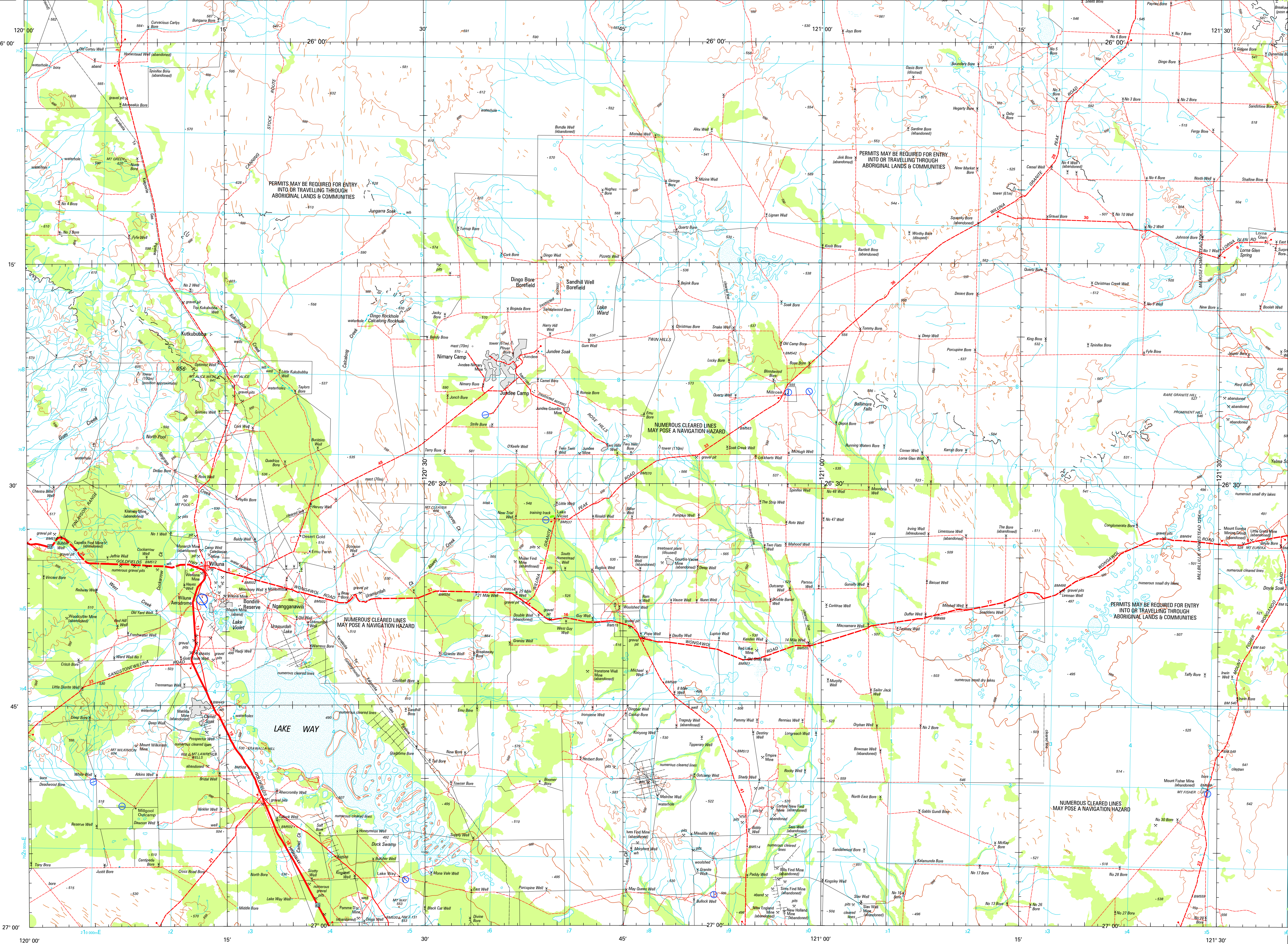
### *Climatic Graph*



Source: Australian Bureau of Meteorology

**Legend**

- |   |  |
|---|--|
| Dual carriageway; Distance in kilometres.....       |  |
| Principal road; Locality; Built-up area.....        |  |
| Secondary road; Bridge; Causeway.....               |  |
| Minor road (access & condition not assured).....    |  |
| Vehicle track (access & condition not assured)..... |  |
| Route marker: National, State.....                  |  |
| Gate; Stock grid.....                               |  |
| Embankment; Cutting.....                            |  |
| Landing ground; Airport; Heliport.....              |  |
| Multiple track railway; Station or siding.....      |  |
| Single track railway; Bridge; Tunnel.....           |  |
| Poweline (110 kV and over).....                     |  |
| Homestead; Building/s; Ruin.....                    |  |
| Chimney; Silo; Tower.....                           |  |
| Fence; Levee; Open cut mine.....                    |  |
| Mine; Windpump; Yard.....                           |  |
| Contour with value; Depression contour.....         |  |
| Horizontal contour point; Spot elevation.....       |  |
| Sand; Sand dunes.....                               |  |
| Sand ridges; Pinnacle; Cliff.....                   |  |
| Forest, wood or shrub land; Rainforest.....         |  |
| Plantation; Urban recreation parkland.....          |  |
| Orchard or vineyard; Windbreak.....                 |  |
| Bore or well; Spring; Tank or small dam.....        |  |
| Watercourse (presence of water not implied).....    |  |
| Subject to inundation; Swamp.....                   |  |
| Lake: Perennial, Non-perennial; Waterhole.....      |  |
| Wreck: Submerged, bare or awash.....                |  |
| Foreshore flat; Lighthouse.....                     |  |
| Shoal; Tidal ledge or reef; Mangrove.....           |  |
| Rock: Submerged, bare or awash; Breakwater.....     |  |
| Jetty or pier; Wharf; Saline coastal flat.....      |  |
| State or Territory border.....                      |  |
| Reserved area boundary.....                         |  |
| Prohibited area boundary.....                       |  |



NATMAP produced by Geoscience Australia  
© Australian Government 2003, GEOCAT 45285