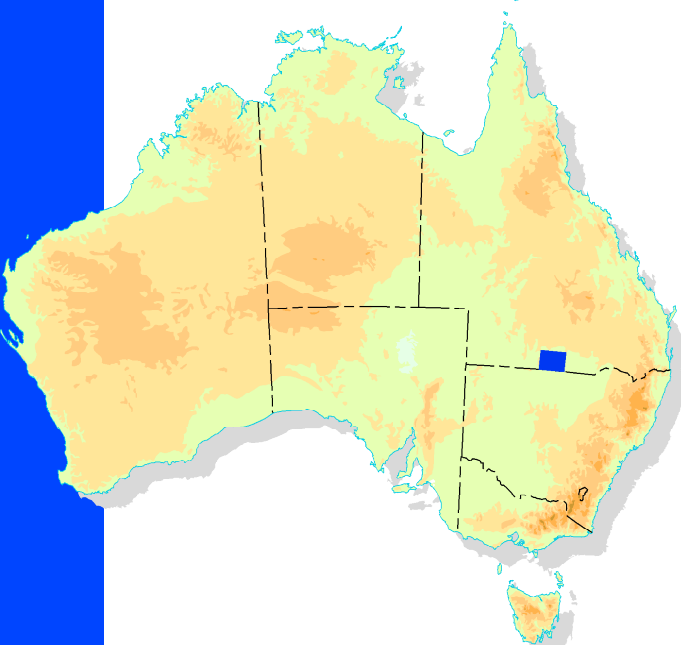
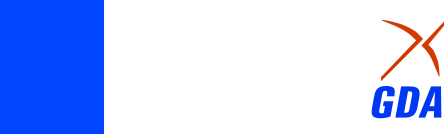


# Cunnamulla

QUEENSLAND and  
NEW SOUTH WALES



TOOMPINE SG55-13	WYANDRA SG55-14	HOMEBORN SG55-15
EULO SH55-01	CUNNAMULLA SH55-02	DIRRANBANDI SH55-03
YANTABULLA SH55-05	ENINGONIA SH55-06	ANGLEBOOL SH55-07



© Australian Government 2002  
No part of this publication may be reproduced, stored in a retrieval system or transmitted in any form or by any means, electronic, mechanical, photocopying, recording or otherwise.

### Map Reliability

Topographic information checked from 2001 satellite imagery, and supplemented using other sources in 2001.  
This map was not field checked and some information may not be accurate.

### About the NATMAP Series

Geoscience Australia produces over 500 maps at 1:250 000 scale in this NATMAP series which covers Australia. They are used by professional and recreational users and are available both flat and folded. A corresponding data product, GEODATA TOPO- 250K is also available.

### Your Feedback is Welcome

If you discover errors or omissions on the map, please let us know via the map amendments page on our web site or send your annotated map to us. We will replace your map with the corresponding current edition.  
We value your assistance for the next edition.  
e-mail: mapfeedback@ga.gov.au

### Acknowledgments

Geoscience Australia gratefully acknowledges contributions to map content. Information is supplied by the Australian Government, State and local governments, private sector agencies and individuals. A comprehensive list is available from our web site.

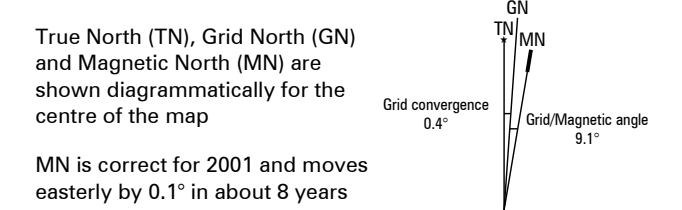
### Contact

Geoscience Australia  
GPO Box 378 Canberra ACT 2601  
Tel: 02 6249 9966 Fax: 02 6249 9960  
NATMAP Freecall: 1800 800 173  
Web: www.ga.gov.au

The Australian Government agency providing  
SPATIAL INFORMATION FOR THE NATION

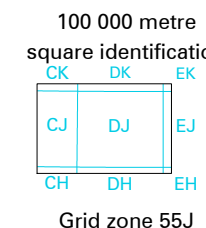


**About this Map**  
Projection.....Map Grid of Australia 1994 (MGA94)  
Universal Transverse Mercator on GRS80 ellipsoid  
Horizontal Datum.....Geocentric Datum of Australia 1994 (GDA94)  
equivalent to WGS84  
Vertical Datum.....Australian Height Datum (AHD)  
Horizontal Accuracy.....+/- 140 metres  
Vertical Accuracy.....+/- 25 metres  
Elevations in metres; 50 metre contour interval

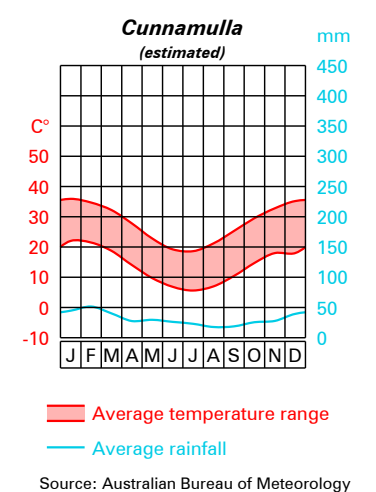


### How to Quote a Grid Reference for a Particular Point

- Blue numbers on the map grid lines are 10 000 metre intervals
- Example: • Borambil
- Quote this map..... Cunnamulla
  - Read letters identifying 100 000 metre square containing the point..... DJ
  - Locate the vertical grid line to the left of the point and read large number on the grid line..... 0
  - Estimate tenths from the grid line to the point..... 6
  - Locate the horizontal grid line below the point and read large number on the grid line..... 5
  - Estimate tenths from the grid line to the point..... 6
- Thus the reference for • Borambil is..... Cunnamulla DJ0656

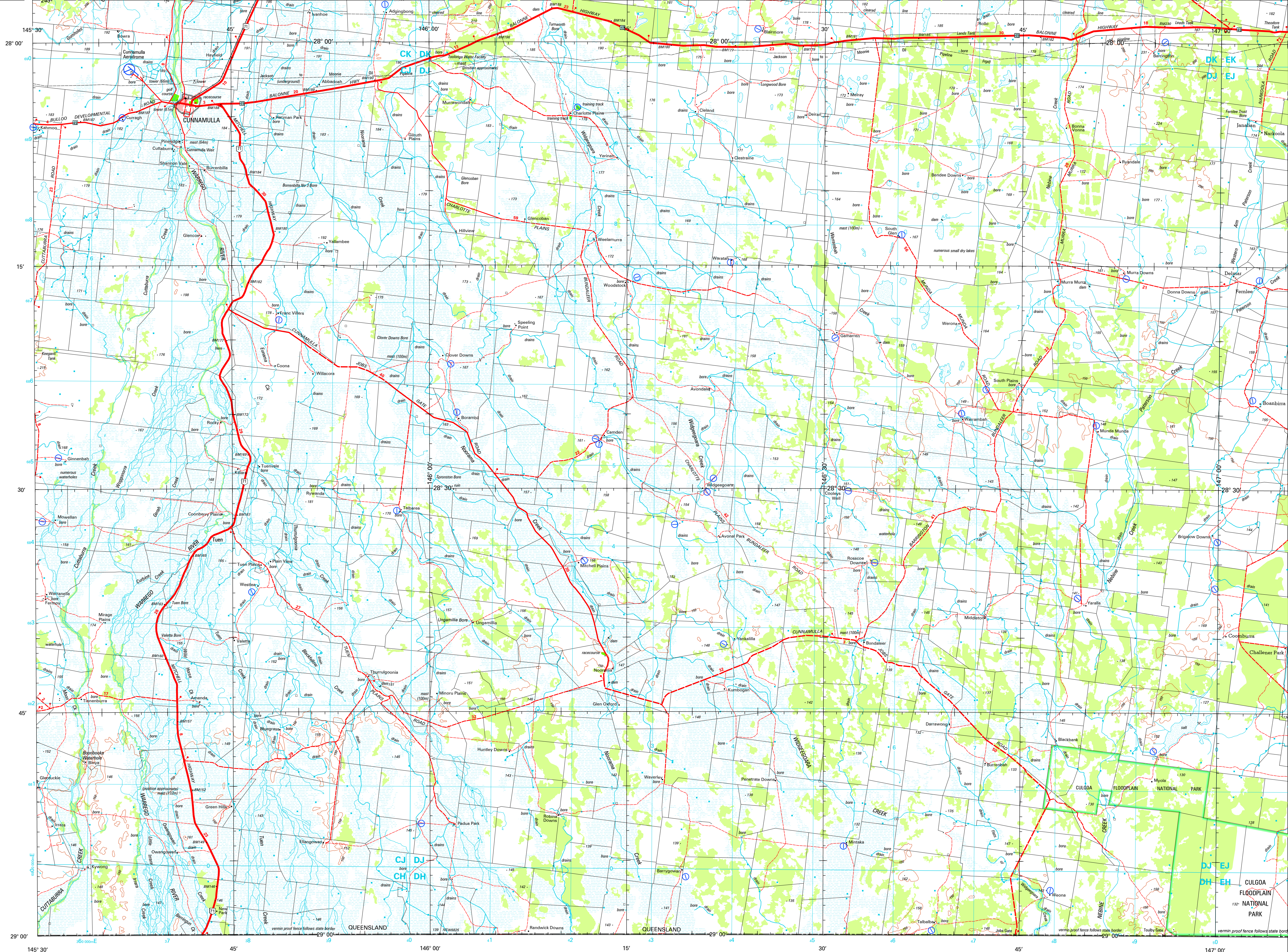


### Climatic Graph



### Legend

- Dual carriageway; Distance in kilometres..... 23 23
- Principal road; Locality; Built-up area..... sealed unsealed
- Secondary road; Bridge; Causeway.....
- Minor road (access & condition not assured).....
- Vehicle track (access & condition not assured).....
- Route marker: National, State.....
- Gate; Stock grid.....
- Embankment; Cutting.....
- Landing ground; Airport; Heliport.....
- Multiple track railway; Station or siding.....
- Single track railway; Bridge; Tunnel.....
- Powerline (110 kV and over).....
- Homestead; Building/s; Ruin.....
- Chimney; Silo; Tower.....
- Fence; Levee; Open cut mine.....
- Mine; Windpump; Yard.....
- Contour with value; Depression contour.....
- Horizontal control point; Spot elevation.....
- Sand; Sand dunes.....
- Sand ridges; Pinnacle; Cliff.....
- Forest, wood or shrub land; Rainforest.....
- Plantation; Urban recreation parkland.....
- Orchard or vineyard; Windbreak.....
- Bore or well; Spring; Tank or small dam.....
- Watercourse (presence of water not implied).....
- Subject to inundation; Swamp.....
- Lake; Perennial, Non-perennial; Waterhole.....
- Wreck: Submerged, bare or awash.....
- Foreshore flat; Lighthouse.....
- Shoal; Tidal ledge or reef; Mangrove.....
- Rock: Submerged, bare or awash; Breakwater.....
- Jetty or pier; Wharf; Saline coastal flat.....
- State or Territory border.....
- Reserved area boundary.....
- Prohibited area boundary.....



NATMAP produced by Geoscience Australia  
© Australian Government 2002, GEOCAT 45447

