



© Australian Government 2000

phic information checked from

Topographic information checked from

science Australia produces over 500 maps at

1:250 000 scale in this NATMAP series which

you discover errors or omissions on the n

*if you discover errors or omissions on the map,
please let us know via the map amendments page*

ce Australia gratefully acknowledges

Geoscience Australia gratefully acknowledges contributions to map content. Information is supplied

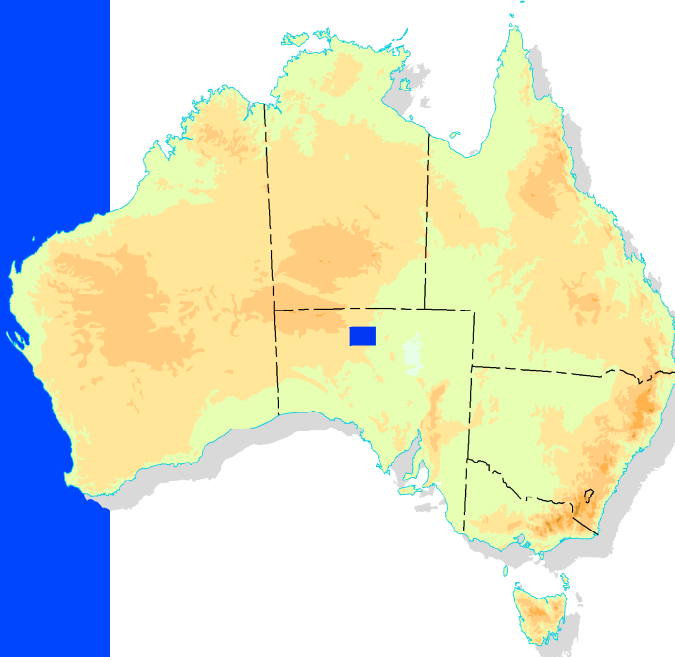
science Australia

GPO Box 378 Canberra ACT 2601



NATMAP 1999
TOPOGRAPHIC MAP
1:250 000 SCALE (1cm to 2.5km)

SOUTH AUSTRALIA



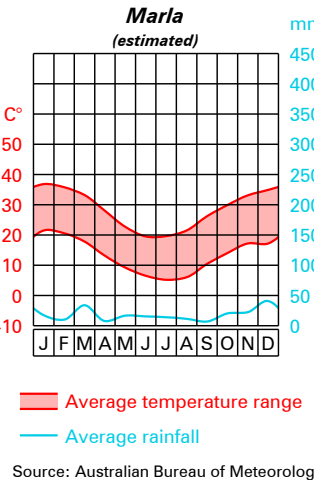
Projection.....Map Grid of Australia 1994 (MGA94)
 Universal Transverse Mercator on GRS80 ellipsoid
 Horizontal Datum.....Geocentric Datum of Australia 1994 (GDA94)
 equivalent to WGS84
 Vertical Datum.....Australian Height Datum (AHD)
 Horizontal Accuracy.....+/- 140 metre
 Vertical Accuracy.....+/- 25 metre
 Elevations in metres; 50 metre contour interval

True North (TN), Grid North (GN) and Magnetic North (MN) are shown diagrammatically for the centre of the map

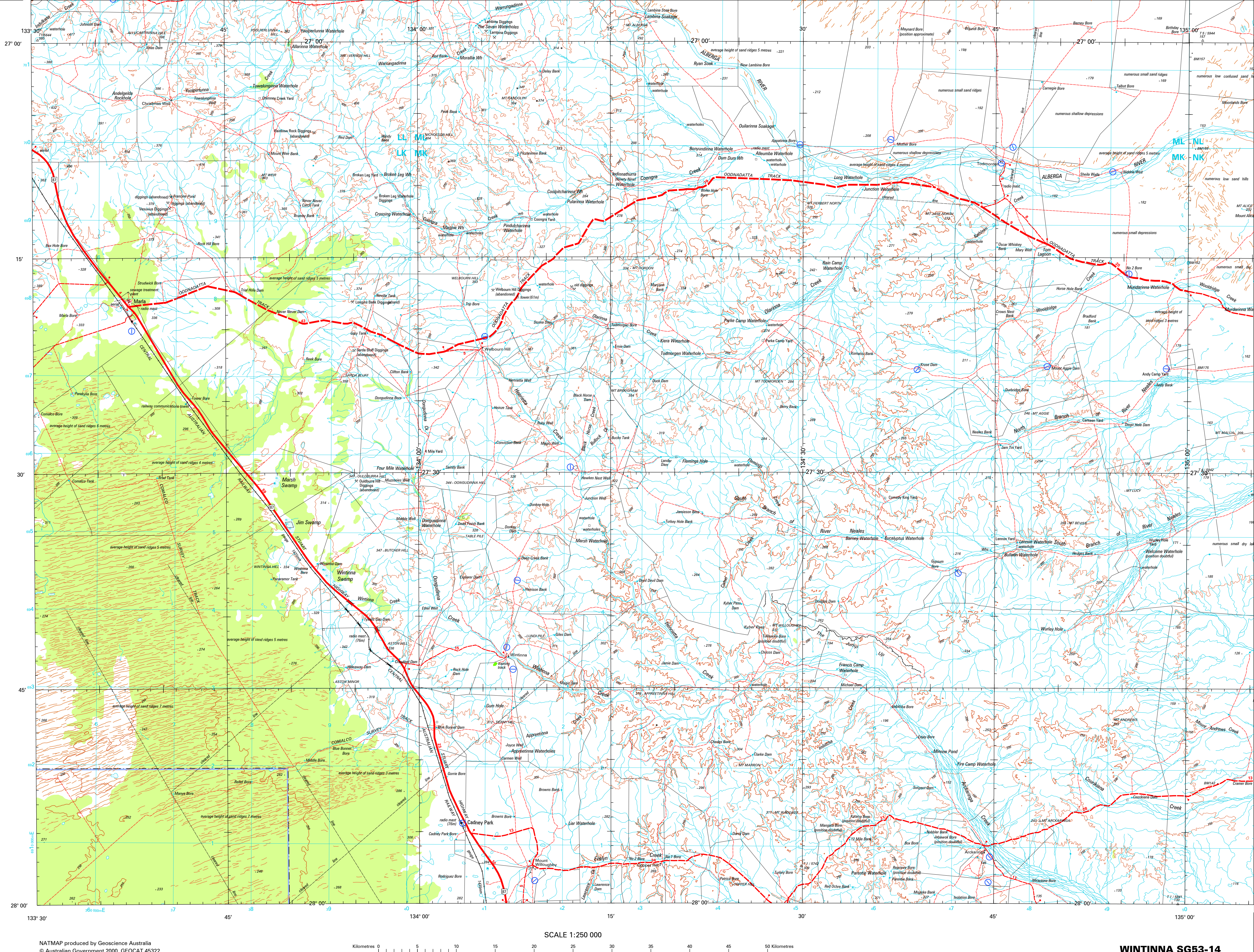
MN is correct for 2000 and moves easterly by 0.1° in about 5 years

How to Quote a Grid Reference for Particular Point

Blue numbers on the map grid lines are 10 000 metre intervals



- | | |
|---|--|
| Dual carriageway; Distance in kilometres..... | |
| Principal road; Locality; Built-up area..... | |
| Secondary road; Bridge; Causeway..... | |
| Minor road (access & condition not assured)..... | |
| Vehicle track (access & condition not assured)..... | |
| Route marker: National, State..... | |
| Gate; Stock grid..... | |
| Embankment; Cutting..... | |
| Landing ground; Airport; Heliport..... | |
| Multiple track railway; Station or siding..... | |
| Single track railway; Bridge; Tunnel..... | |
| Powerline (110 kV and over)..... | |
| Homestead; Building/s; Ruin..... | |
| Chimney; Silo; Tower..... | |
| Fence; Levee; Open cut mine..... | |
| Mine; Windpump; Yard..... | |
| Contour with value; Depression contour..... | |
| Horizontal contour point; Spot elevation..... | |
| Sand; Sand dunes..... | |
| Sand ridges; Pinnacle; Cliff..... | |
| Forest, wood or shrub land; Rainforest..... | |
| Plantation; Urban recreation parkland..... | |
| Orchard or vineyard; Windbreak..... | |
| Bore or well; Spring; Tank or small dam..... | |
| Watercourse (presence of water not implied)..... | |
| Subject to inundation; Swamp..... | |
| Lake: Perennial, Non-perennial; Waterhole..... | |
| Wreck: Submerged, bare or awash..... | |
| Foreshore flat; Lighthouse..... | |
| Shoal; Tidal ledge or reef; Mangrove..... | |
| Rock: Submerged, bare or awash; Breakwater..... | |
| Jetty or pier; Wharf; Saline coastal flat..... | |
| State or Territory border..... | |
| Reserved area boundary..... | |
| Prohibited area boundary..... | |



NATMAP produced by Geoscience Australia
© Australian Government 2000, GEOCAT 45322