

MIGRATION  
0 - 18 S  
FIRST

[illegible][illegible]

ANSTRUTED BY  
**ANSIR**  
ANSTRUTED BY  
ANSTRUTED BY

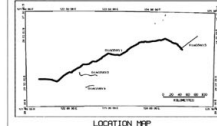
DAVID JOHNSTONE, LEONIE JONES & TIM BARTO

PROCESSED BY:  
GEOSCIENCE AUSTRALIA (1844.GA.GOV.AU)  
CINERAMA, A.C.T.

PROCESSING: LEONIE JONES, ED CHUDYK, TIM BARTO

POTENTIAL FIELD DATA: BEN BELL  
BOUGUER REDUCED GRAVITY: RESIDUAL, REDUCED FOR MAGNETICS

HORIZONTAL SCALE = 1:27 INCHES/DEGREE (1:108,000)  
VERTICAL SCALE = 1:18,000 INCHES/DEGREE  
WAVE = 1:11 (GIVE AVERAGE VELOCITY GRAPH 1/2)  
N.B. 100 MG CORRESPONDS TO 200 M GRAVITY



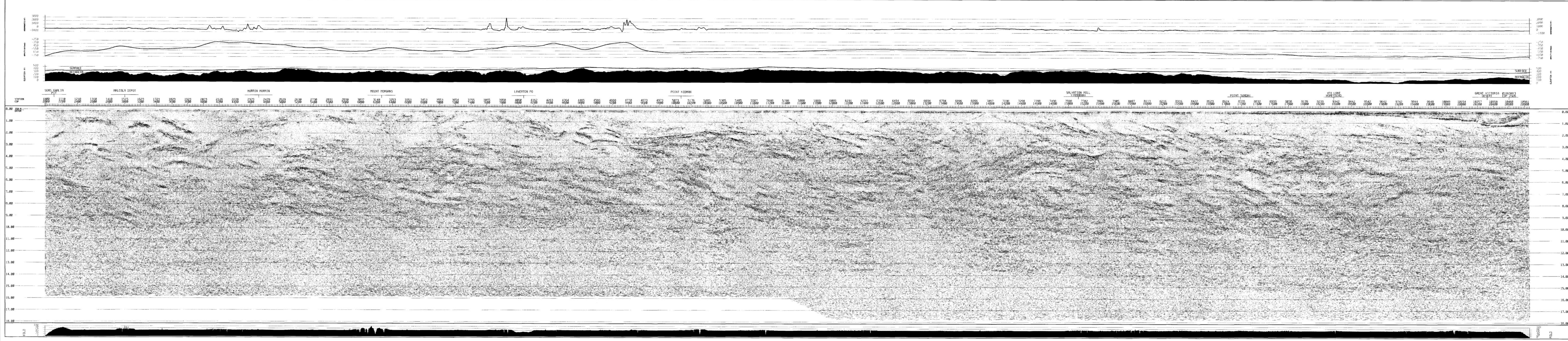
**COPYRIGHT CONFORMANCE OF AUSTRALIA 2002**

THIS WORK IS COPYRIGHT © 1997 BY THE FIRST DEALING FOR THE PUBLICATION OF SUCH A WORK. CRITICISM OR REVIEW IS PERMITTED UNDER THE COPYRIGHT ACT, AND PART MAY BE REPRODUCED BY ANY PERSON WITHOUT THE WRITTEN PERMISSION OF THE PUBLISHER.

INQUIRIES SHOULD BE DIRECTED TO THE CHIEF EXECUTIVE OFFICER, GEOSCIENCE AUSTRALIA, GPO BOX 376, CHICKENHURST CITY, ACT, 2001

**DISCLAIMER**

GEOSCIENCE AUSTRALIA HAS BEEN WISHED TO HAVE THE INFORMATION IN THIS PRODUCT AS ACCURATE AS POSSIBLE. HOWEVER, IT DOES NOT GUARANTEE THE ACCURACY OF THE INFORMATION. IT IS THE USER'S RESPONSIBILITY TO VERIFY THE ACCURACY OF THE INFORMATION. THE INFORMATION IS NOT TO BE USED FOR ANY PURPOSE OTHER THAN THAT FOR WHICH IT WAS PROVIDED. THE INFORMATION IS NOT TO BE USED FOR ANY PURPOSE OTHER THAN THAT FOR WHICH IT WAS PROVIDED.



**NORTHEASTERN YILGARN 2001 SEISMIC SURVEY L154**  
**LINE 01AGSNY1**  
**0-18 S MIGRATION**  
**ACQUISITION AND PROCESSING**

**GENERAL SURVEY PARAMETERS**

SURVEY NUMBER	L154
SURVEY NAME	NORTHEASTERN YILGARN
SURVEY AREA	YILGARN CRATON - LEONORA TO LAKE YEO
TOTAL NUMBER OF LINES IN SURVEY	4
THIS LINE NAME	01AGSNY1
DATE ACQUIRED	AUGUST 2001
STATION RANGE	992 - 10592
ACQUIRED BY	TRACE ENERGY SERVICES FOR ANSIR
REFERENCE - ACQUISITION	S.BARBOUR, FINAL REPORT-OPERATIONS, 2001
REFERENCE - PROCESSING	L.E.A. JONES, B.R. GOLEBY AND T.J. BARTON, SEISMIC PROCESSING – 2001 NORTHERN YILGARN SEISMIC REFLECTION SURVEY (L154)
REFERENCE - INTERPRETATION	NORTHEASTERN YILGARN SEISMIC WORKSHOP, AUGUST 2002 - WORKSHOP NOTES, GEOSCIENCE AUSTRALIA
GRAVITY & MAGNETIC DATA ALONG LINE	FROM GEOSCIENCE AUSTRALIA'S NATIONAL COVERAGE

**ACQUISITION PARAMETERS**

ACQUISITION SYSTEM TYPE	ARAM24
TAPE FORMAT	ARAM SEG-Y
TAPE MEDIA	3490E MAGNETIC TAPE AND 5 GBYTE EXABYTE
RECORD LENGTH	16/18 SECONDS
SAMPLE RATE	2 MSEC
FILTERS	LOW/HIGH-CUT 3/205 HZ; NOTCH OUT
FIELD FILES	1 TO 2130 & 2709 TO 5351
FIELD REELS	L15401003 TO L15401027 L15401036 TO L15401068
SOURCE TYPE	THREE IVI HEMI-60 VIBES
SWEEP TYPE	3 X 12 SEC VARISWEEPS 7-56 HZ, 12-80 HZ & 8-72 HZ
SOURCE ARRAY	60 M, CENTRED ON PEG
VIBE CONFIG	15M PAD/PAD, 15 M MOVEUP
VP INTERVAL	80 M
SPREAD PATTERN	1....120 X 121....240
OFFSETS (M)	-4780....-20 X 20....4780
GROUP PATTERN	12 IN-LINE, 3.33 M SPACING
	CENTRED BETWEEN PEGS
GROUP INTERVAL	40 M
COVERAGE	60 FOLD (NOMINAL)

## PROCESS SEQUENCE

[1]	LINE GEOMETRY AND CROOKED LINE DEFINITION (FIXED CDP INT)
[2]	FIELD SEG Y TO 'DISCO' FORMAT; RESAMPLE TO 4 MS
[3]	QUALITY CONTROL DISPLAYS AND TRACE EDITS
[4]	SPECTRAL EQUALIZATION (WITH REMOVABLE 1000 MS AGC)
[5]	CMP SORT (BIN WIDE OPEN)
[6]	GAIN RECOVERY (SPHERICAL DIVERGENCE OPTION)
[7]	TRACE AMPLITUDE BALANCE ACROSS USER DEFINED GATES
[8]	SURGICAL AIR WAVE MUTE
[9]	BULK SHIFT +100 MS
[10]	APPLICATION OF REFRACTION STATICS, DATUM 350 M (AHD), VARIABLE REPLACEMENT VELOCITY: 5500 M/S (992-9500), 4500 M/S (10200-10592), LINEAR INTERPOLATION IN BETWEEN
[11]	APPLICATION OF AUTOSTATICS (CALCULATED ON 1.75-4.5 S GATE)
[12]	BANDPASS FILTER TIME (SEC) BANDPASS(HZ)/SLOPE(DB/OCTAVE) 0.0 - 1.5      16/36 - 100/36 2.0              10/36 - 80/36 6.0 - 18.0      10/36 - 60/36
[13]	VELOCITY ANALYSIS USING VELEX, 1ST PASS AFTER REFRACTION STATICS, 2ND PASS AFTER AUTOMATIC RESIDUAL STATICS
[14]	NORMAL MOVEOUT CORRECTION (15% STRETCH MUTE)
[15]	COMMON MID POINT STACK (ALPHA TRIMMED MEAN)
[16]	TRACE AMPLITUDE BALANCE
[17]	FINITE DIFFERENCE MIGRATION WITH DIP CORRECTED VELOCITIES
[18]	BANDPASS FILTER TIME (SEC) BANDPASS(HZ)/SLOPE(DB/OCTAVE) 0.0 - 1.5      16/36 - 80/36 2.0 - 6.5      10/36 - 70/36 10.0            10/36 - 60/36 18.0            10/36 - 40/36
[19]	SIGNAL ENHANCEMENT (DIGISTACK 0.85)
[20]	LINEAR GAIN AND TRACE AMPLITUDE SCALING

## ACQUIRED BY

DAVID JOHNSTONE, LEONIE JONES & TIM BARTON

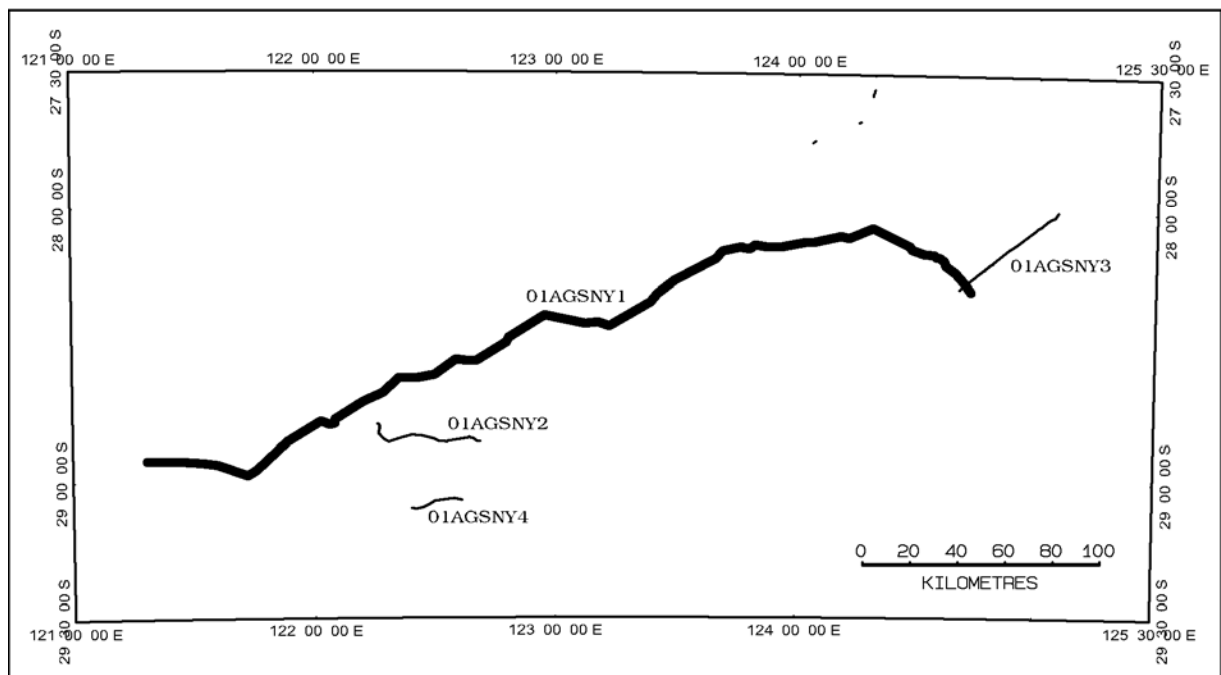
AUSTRALIAN NATIONAL SEISMIC IMAGING RESOURCE (ANSIR)

## PROCESSED BY

LEONIE JONES, TIM BARTON

GEOSCIENCE AUSTRALIA ([www.ga.gov.au](http://www.ga.gov.au))  
CANBERRA, ACT

## LOCATION MAP



LOCATION MAP SHOWING POSITION OF LINE 01AGSNY1

## **PUBLICATION NOTE**

PUBLISHED BY GEOSCIENCE AUSTRALIA, DEPARTMENT OF INDUSTRY, TOURISM AND RESOURCES, CANBERRA, AUSTRALIA. ISSUED UNDER THE AUTHORITY OF THE MINISTER FOR INDUSTRY, TOURISM AND RESOURCES.

## **COPYRIGHT COMMONWEALTH OF AUSTRALIA 2002**

THIS WORK IS COPYRIGHT. APART FROM ANY FAIR DEALINGS FOR THE PURPOSES OF STUDY, RESEARCH, CRITICISM OR REVIEW, AS PERMITTED UNDER THE COPYRIGHT ACT, NO PART MAY BE REPRODUCED BY ANY PROCESS WITHOUT WRITTEN PERMISSION. INQUIRIES SHOULD BE DIRECTED TO THE CHIEF EXECUTIVE OFFICER, GEOSCIENCE AUSTRALIA, GPO BOX 378, CANBERRA CITY, ACT, 2601

## **DISCLAIMER**

GEOSCIENCE AUSTRALIA HAS TRIED TO MAKE THE INFORMATION IN THIS PRODUCT AS ACCURATE AS POSSIBLE. HOWEVER, IT DOES NOT GUARANTEE THAT THE INFORMATION IS TOTALLY ACCURATE OR COMPLETE. THEREFORE YOU SHOULD NOT RELY SOLELY ON THIS INFORMATION WHEN MAKING A COMMERCIAL DECISION.

## **AVAILABILITY**

COPIES OF THIS MIGRATED SEISMIC SECTION AND THE ASSOCIATED DIGITAL DATA CAN BE OBTAINED FROM:

GEOSCIENCE AUSTRALIA SALES CENTRE  
GPO BOX 378  
CANBERRA ACT 2601, AUSTRALIA

WEB:	<a href="http://www.ga.gov.au">www.ga.gov.au</a>
EMAIL:	<a href="mailto:sales@ga.gov.au">sales@ga.gov.au</a>
TELEPHONE:	(02) 6249 9519
FACSIMILE:	(02) 6249 9982