



**Australian Government**

---

**Geoscience Australia**

# **Central Gawler Gold Data Compilation**

**Matt Peljo**

**Gawler State of Play - 2004**





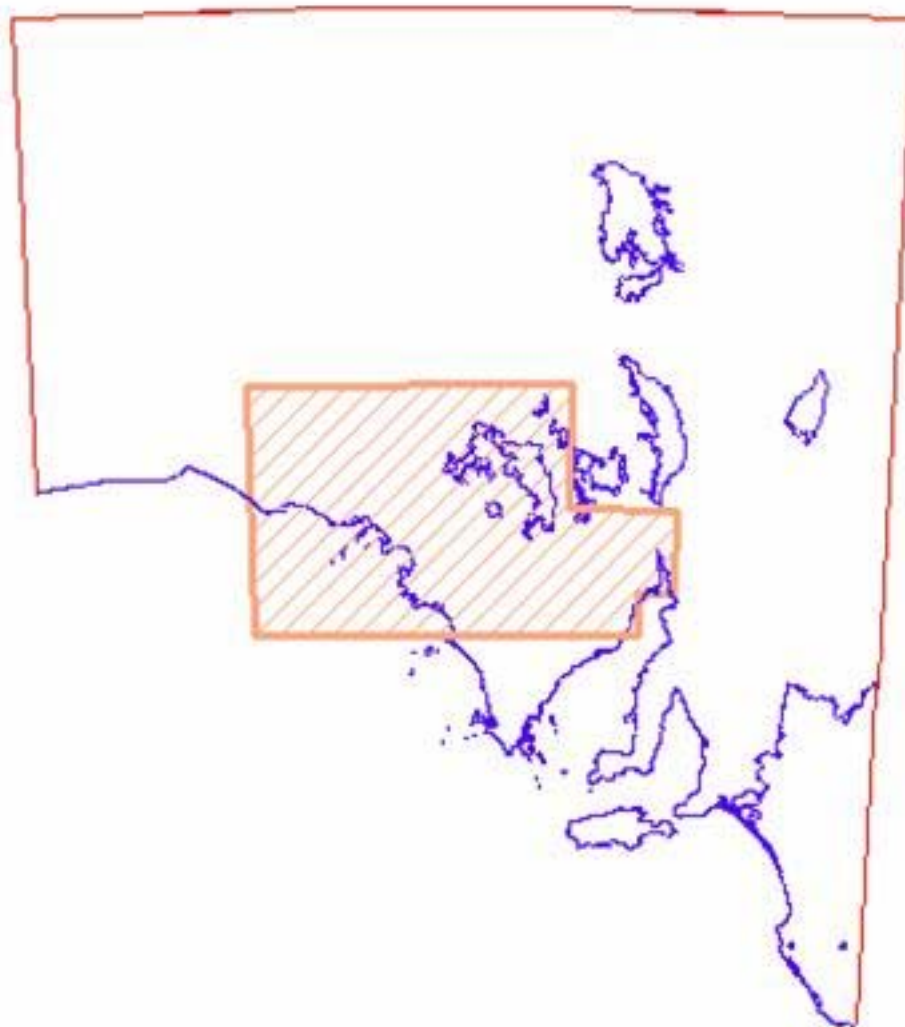
# Background

- Enabling early use of data
- Datasets chosen to help answer specific questions
- DIMS
- Data catalogue
- Complements PIRSA's low-cost statewide GIS



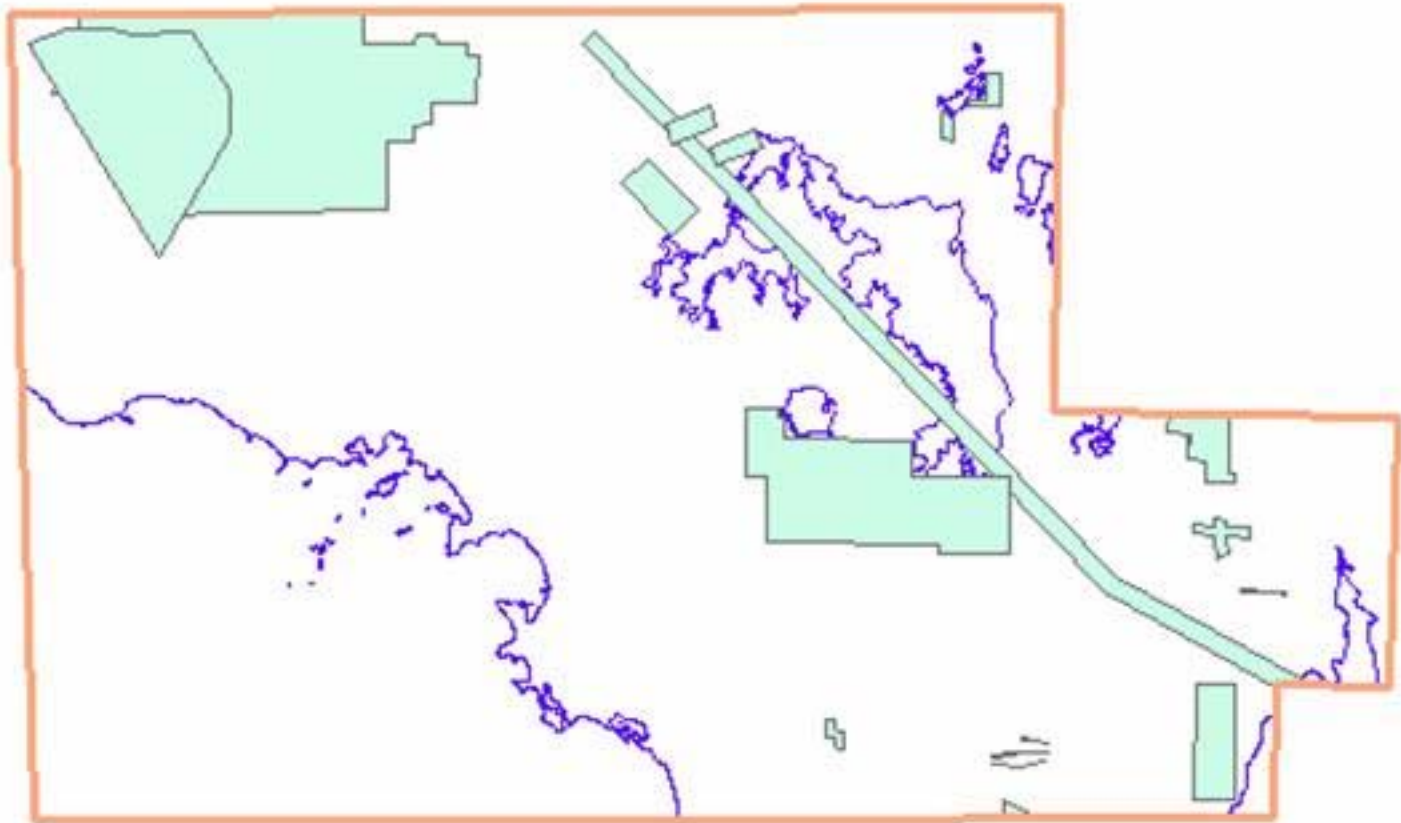


# Location





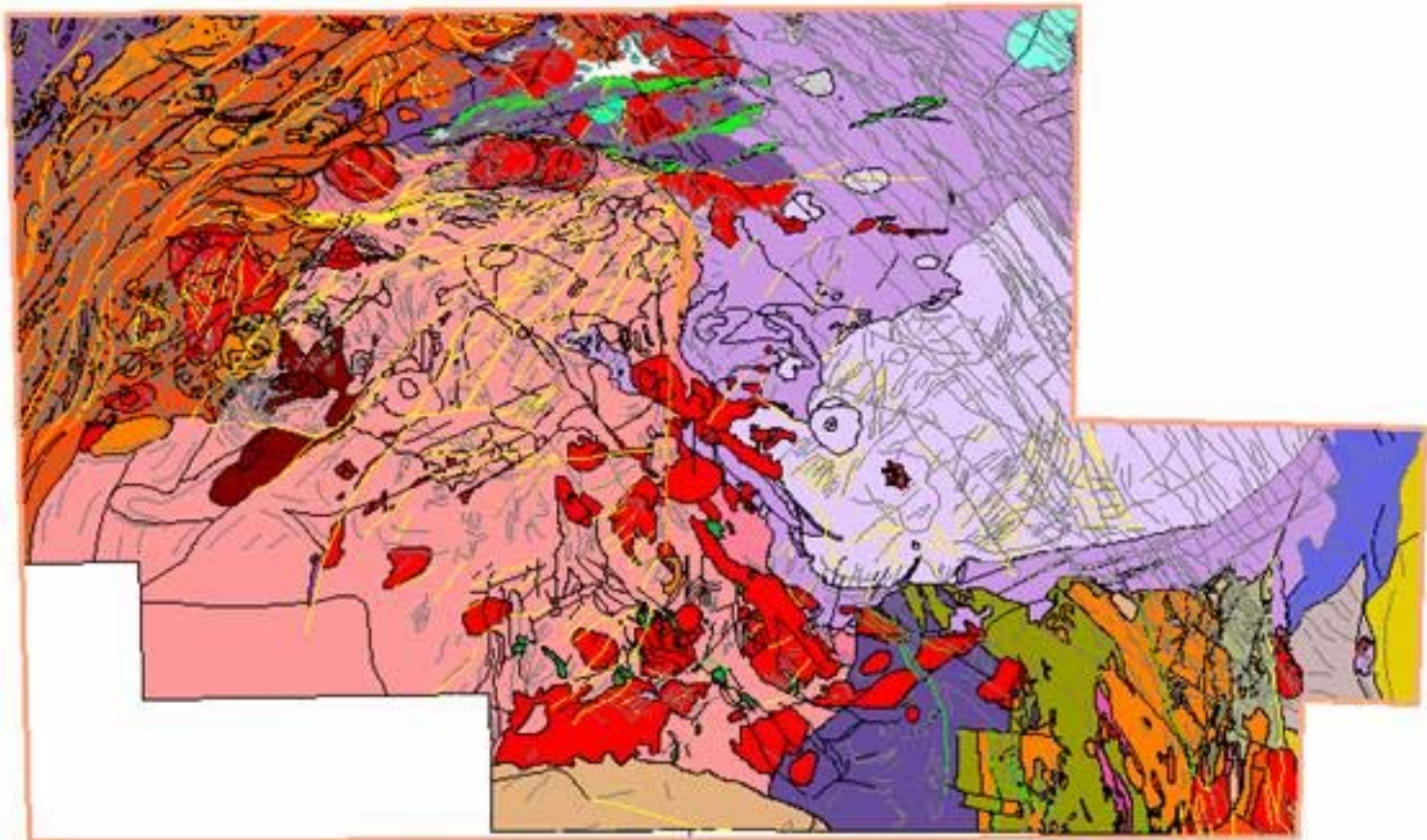
# AEM surveys





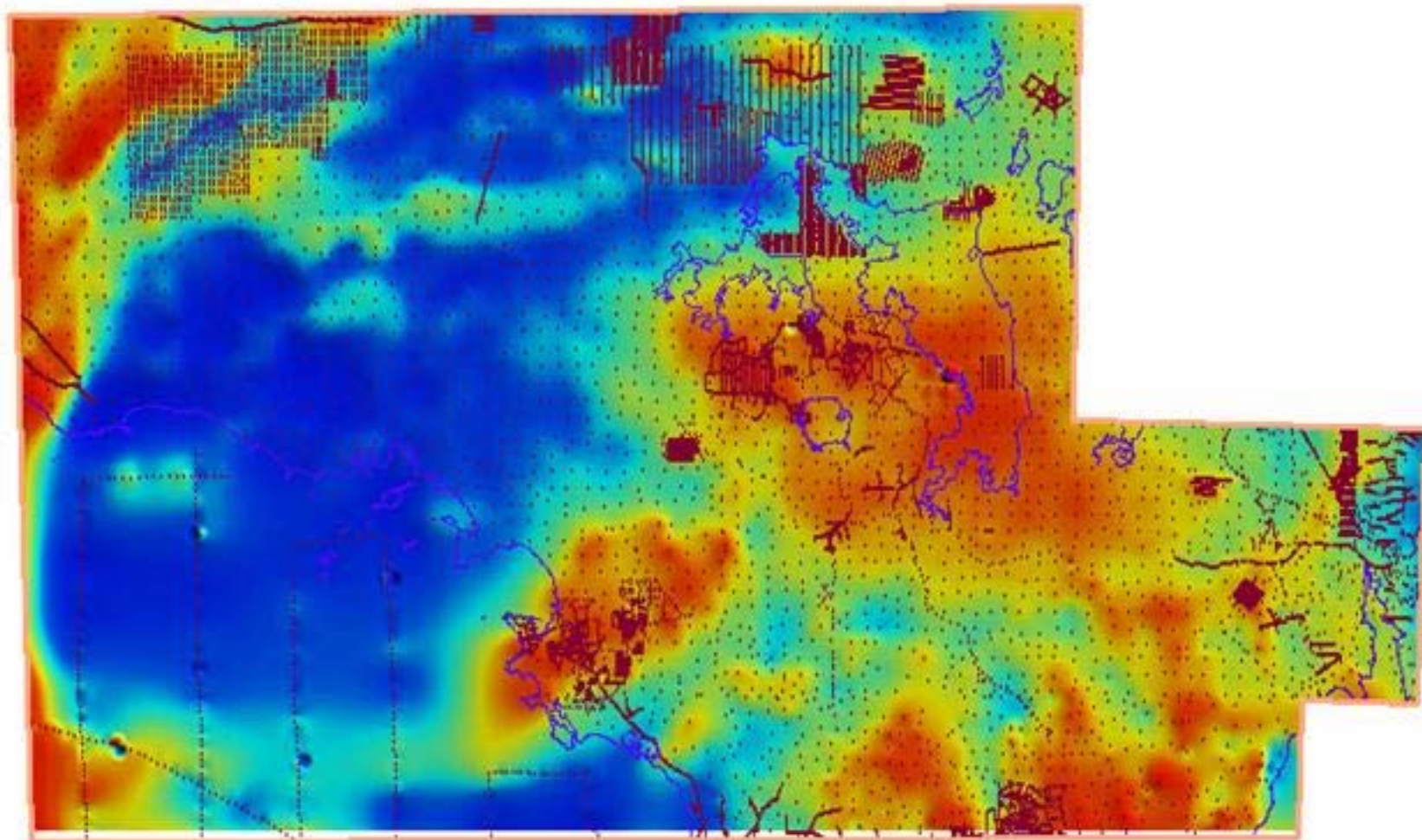


# Crystalline basement





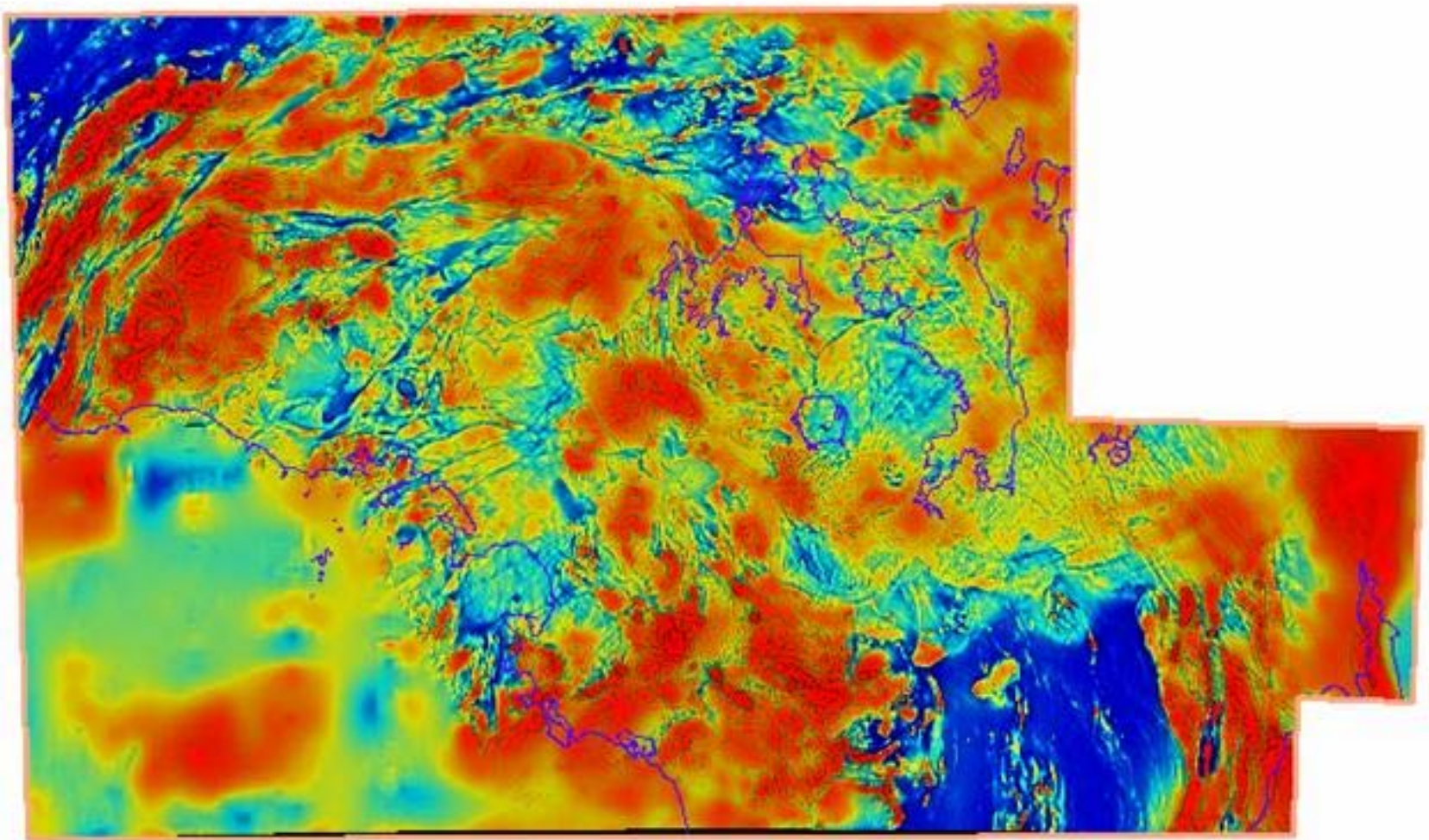
# Gravity





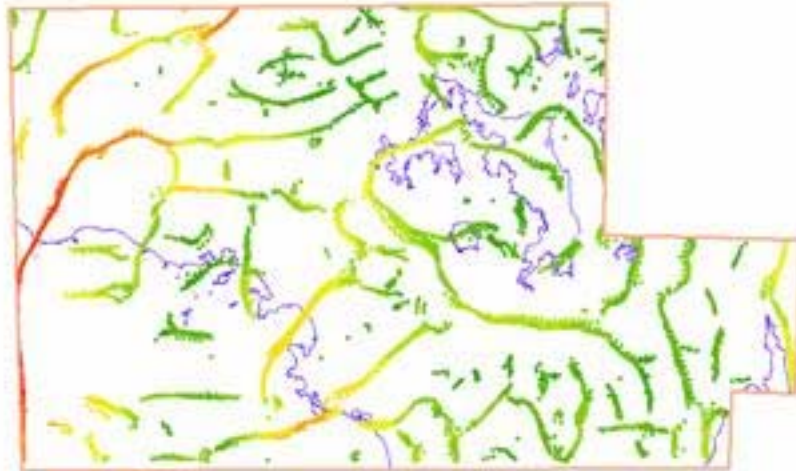


# Magnetics





# Gravity “worms”



- **Geophysical field analysis**
- **Research software developed by Peter Milligan**
- **Shows local gradient maxima**

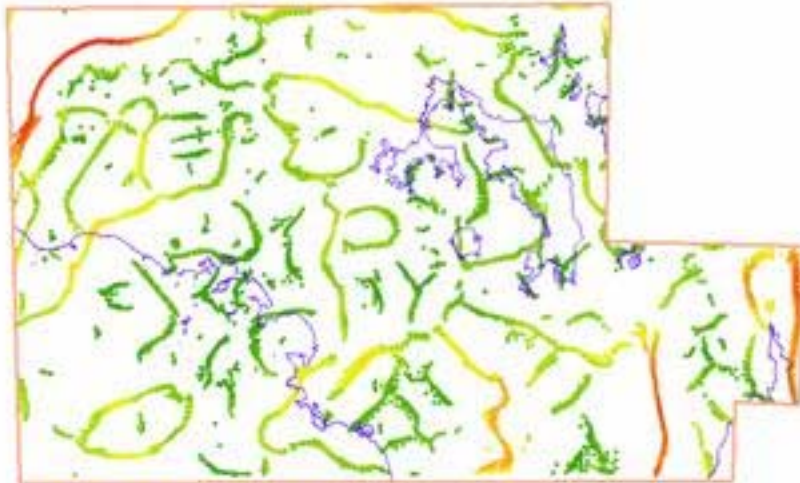


- **Points found first, then automatically vectorised**

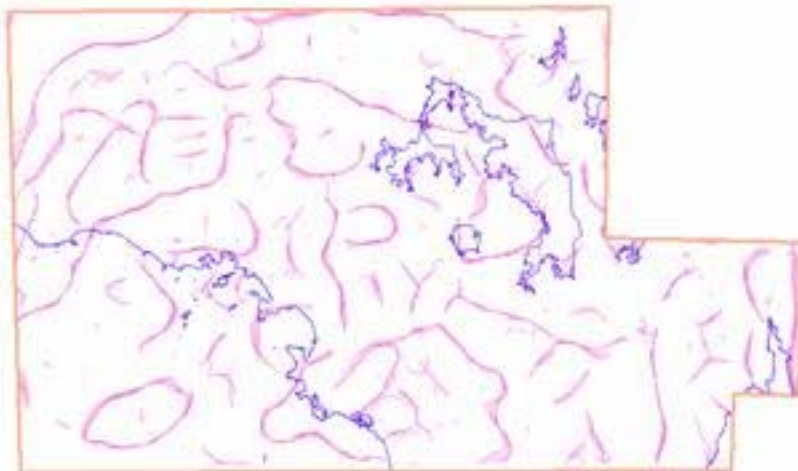




# Magnetics “worms”



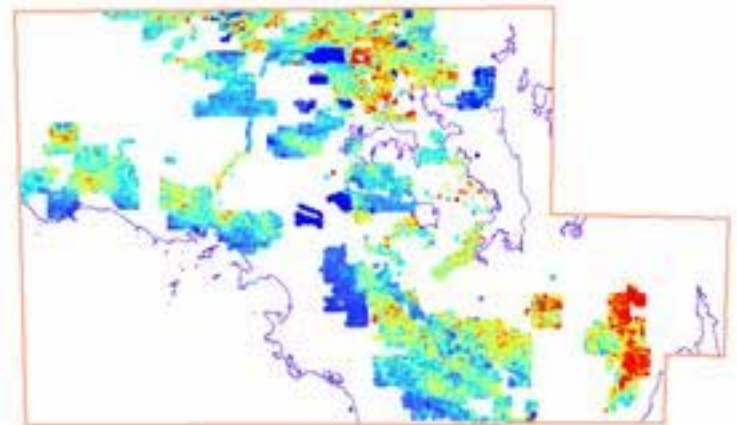
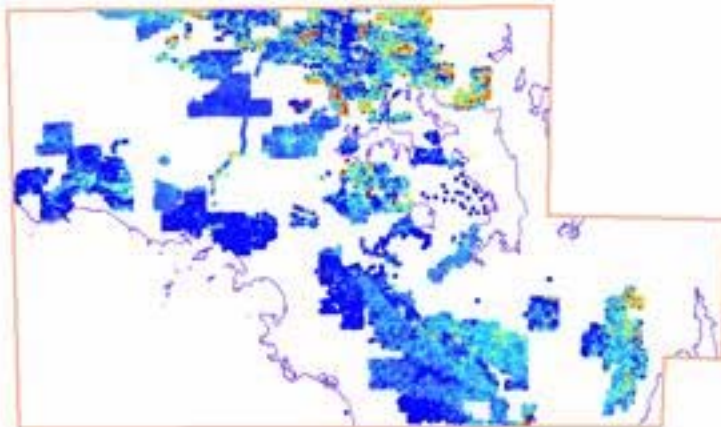
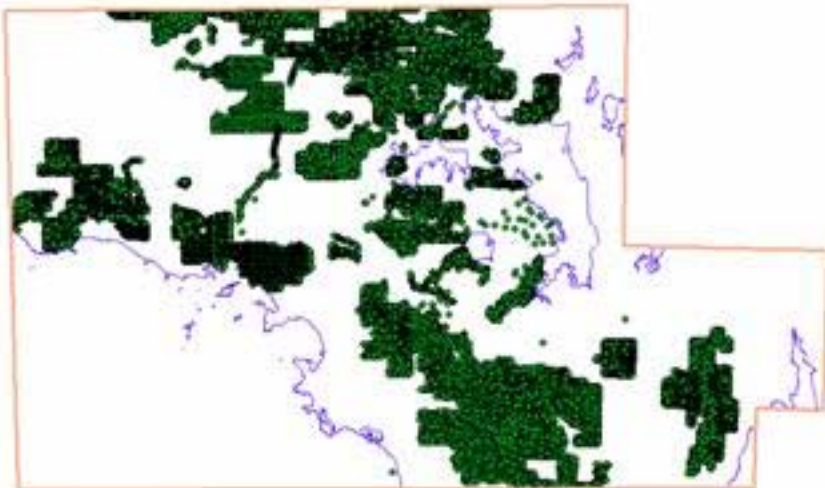
- **Similar to gravity worms**
- **Magnetics reduced to pole**
- **Same upward continuation levels as gravity, here around 20000 m**





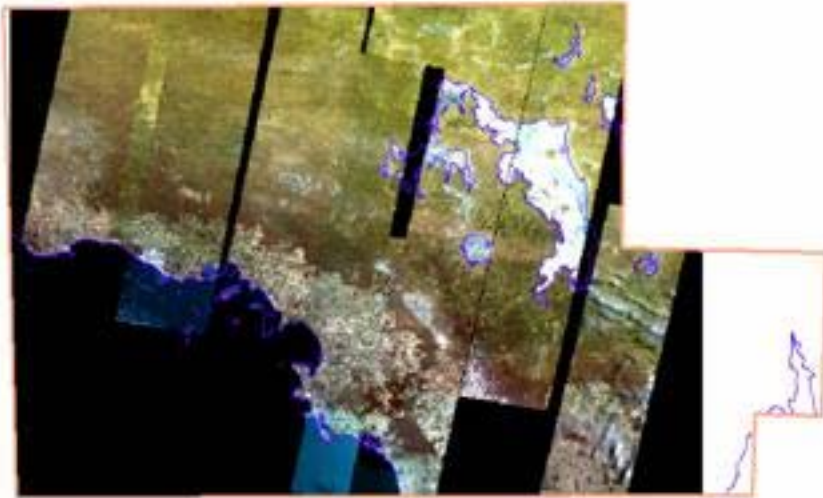
# Calcrete geochemistry

- **Sample sites and assays**
- **Compiled by Mike Schwarz**
- **Gridded for Ag, As, Au, Ca, Co, Cr, Cu, Mg, Ni, Pb**
- **Here, Au and Cu**

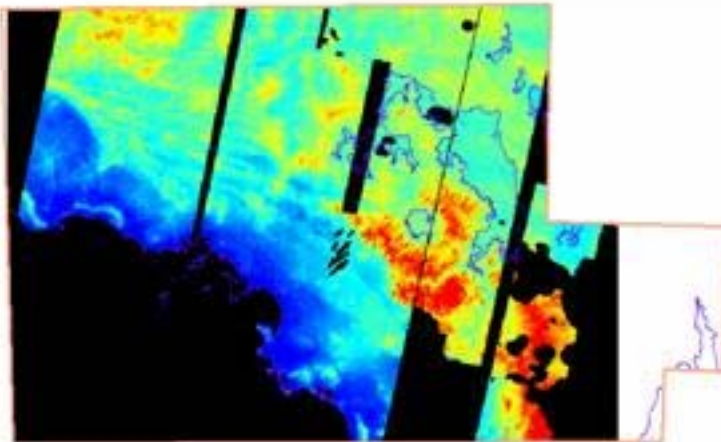




# ASTER satellite data



- **In progress**
- **Processed by Geoscience Australia's Remote Sensing Group**
- **TL – Bands 1, 2, 3**
- **BL – 30 m DEM**







## More...

- Geochronology
- Ground magnetics
- Induced polarisation surveys
- Tenements
- Geochemistry
- Drill holes



## ...but remember

- **Geographic Information Systems have 3 components:**
  - **Data**
  - **People**
  - **Software**
- **Need all three for effective use**

