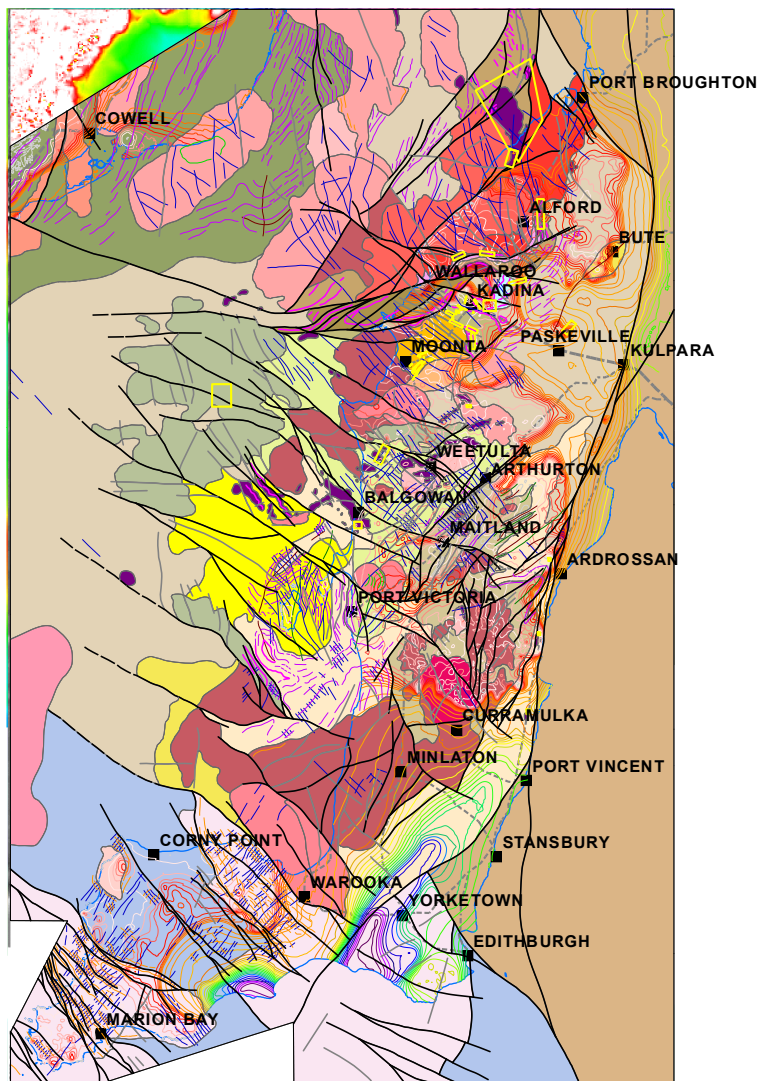


Geological polygons

- Wallaroo Group - metavolcanics, intercalated metasediments
- Undifferentiated Wallaroo Group and Hiltaba Suite basement
- Donington Granitoid Suite - moderately to strongly magnetic
- Donington Granitoid Suite - weakly magnetic
- Hutchison Group, Minbrie Gneiss
- Lincoln Complex - undifferentiated granitoid and paragneisses
- Lincoln Complex - predominantly granitoid gneisses
- Undifferentiated Wallaroo Group, minor Hiltaba Suite
- Wallaroo Group, Hiltaba Suite, Oorlano Metasomatite
- Wallaroo Group - broad areas of magnetic alteration
- Wallaroo Group (mainly metavolcanics) intruded by Hiltaba Suite
- Wallaroo Group - metavolcanics, intercalated metasediments
- Wardang Volcanics
- Moonta Porphyry, Doora Member
- Moonta Porphyry
- Wandearah Formation, Oorlano Metasomatite
- Wandearah Formation undifferentiated
- Wandearah Formation - Aagot Member
- Wandearah Formation - calcareous metasediments
- Wandearah Formation - Doora Member
- Oorlano Metasomatite - carbonate
- Oorlano Metasomatite - magnetite
- Undifferentiated Hiltaba Suite, Wallaroo Group
- Hiltaba Suite - moderately to strongly magnetic
- Hiltaba Suite - moderately to weakly magnetic
- Hiltaba Suite - weakly to non-magnetic
- Mafic Hiltaba Suite, Wallaroo Group
- Tickera Granite intruding Wandearah Formation
- Tickera Granite
- Spilsby Suite
- Oorlano Metasomatite - argillic



Yorke Peninsula

Moonta Subdomain

Pre Neoproterozoic basement geology

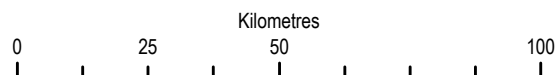
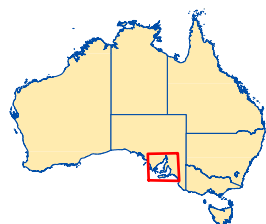
Abandoned mines or prospects

Geological boundaries and faults

- Tile frame
- Geological boundary, inferred
- Geological boundary, probable
- Major fault, inferred
- Major fault, probable
- Minor fault, probable

Other structural lines

- Anticline, interpreted from geophysics
- Bedding trend, concealed, interpreted from geophysics
- Compositional layering, inferred, interpreted from geophysics
- Fracture/joint
- Syncline, interpreted from geophysics
- Trend line, highly magnetic, concealed, interpreted from geophysics
- Trend-line, linear feature of unknown origin, interpreted from geophysics



Australian Government

Geoscience Australia

It is recommended that this map be referenced as:
 Raymond, O., *Yorke Peninsula (Moonta Subdomain) online GIS Dataset*
 Geoscience Australia, Canberra, 2002
 Geocat Number 39835



© Commonwealth of Australia (Geoscience Australia) 2010.
 This material is released under the **Creative Commons Attribution 2.5 Australia** Licence.
<http://creativecommons.org/licenses/by/2.5/au/>