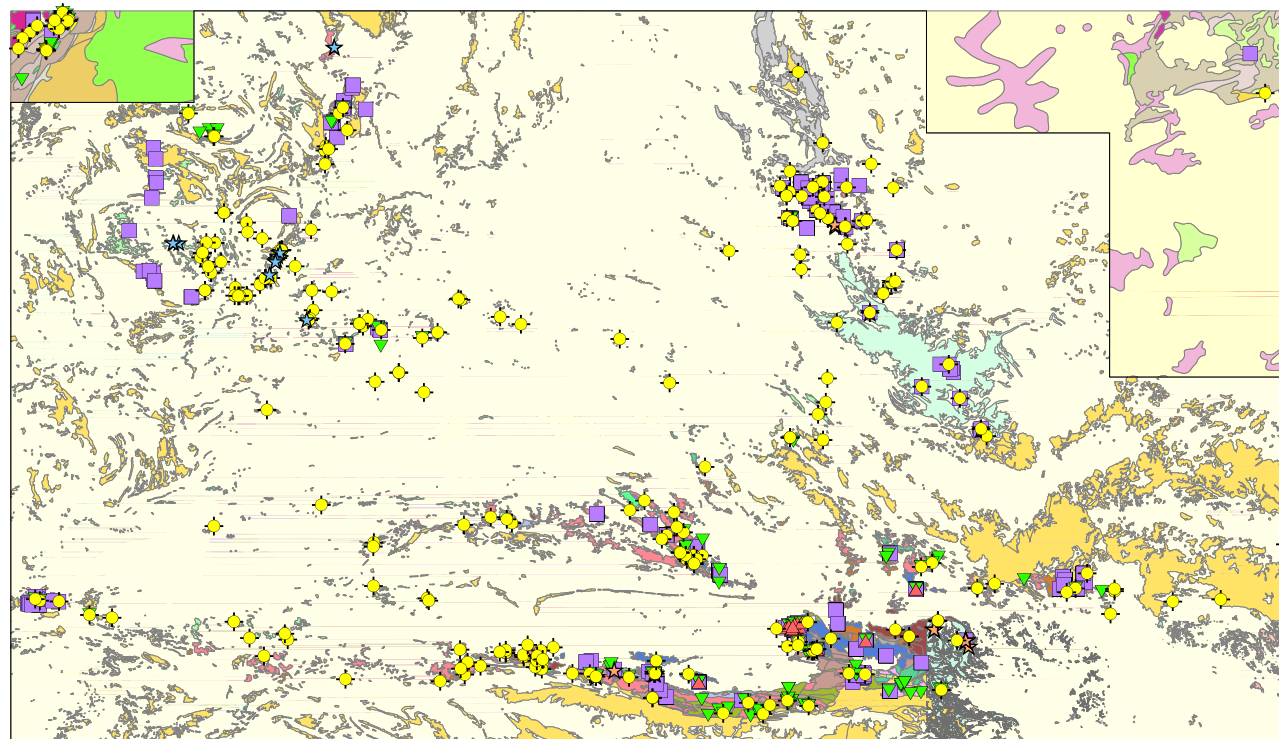


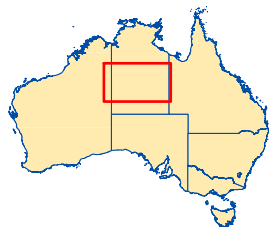
North Australia Project



Metamorphics

Cz	Unmetamorphosed
a	Amphibolite
a(g)	Amphibolite with greenschist overprint
al	Lower amphibolite
al(g)	Lower amphibolite with greenschist overprint
au	Upper amphibolite
au-g	Upper amphibolite to granulite
c	Unmetamorphosed
f	Felsic gneiss
g	Granulite
gs	Greenschist
gs-al	Greenschist to lower amphibolite
hh	Hornblende hornfels
i	Intermediate intrusive
ph	Pyroxene hornfels
pp	Prehnite-pumpellyite
pp-gs	Prehnite-pumpellyite to greenschist
r	Greenschist
rg	Retrogressed granulite and/or upper amphibolite
u	Unmetamorphosed

- ★ Fluid inclusion results
- ◆ SHRIMP Pooled Ages
- ★ Conventional U-Pb Pooled Ages
- ▲ Sm-Nd Isochron Ages
- ▼ Sm-Nd Model Ages
- Rb-Sr Isochron Ages



It is recommended that this map be referenced as:
 Maidement, D., Larson, R.
North Australian Project GIS Dataset
 Geoscience Australia, Canberra, 2002
 Geocat Number 41256



© Commonwealth of Australia (Geoscience Australia) 2010.
 This material is released under the [Creative Commons Attribution 2.5 Australia Licence](http://creativecommons.org/licenses/by/2.5/au/).
<http://creativecommons.org/licenses/by/2.5/au/>



Australian Government
 Geoscience Australia