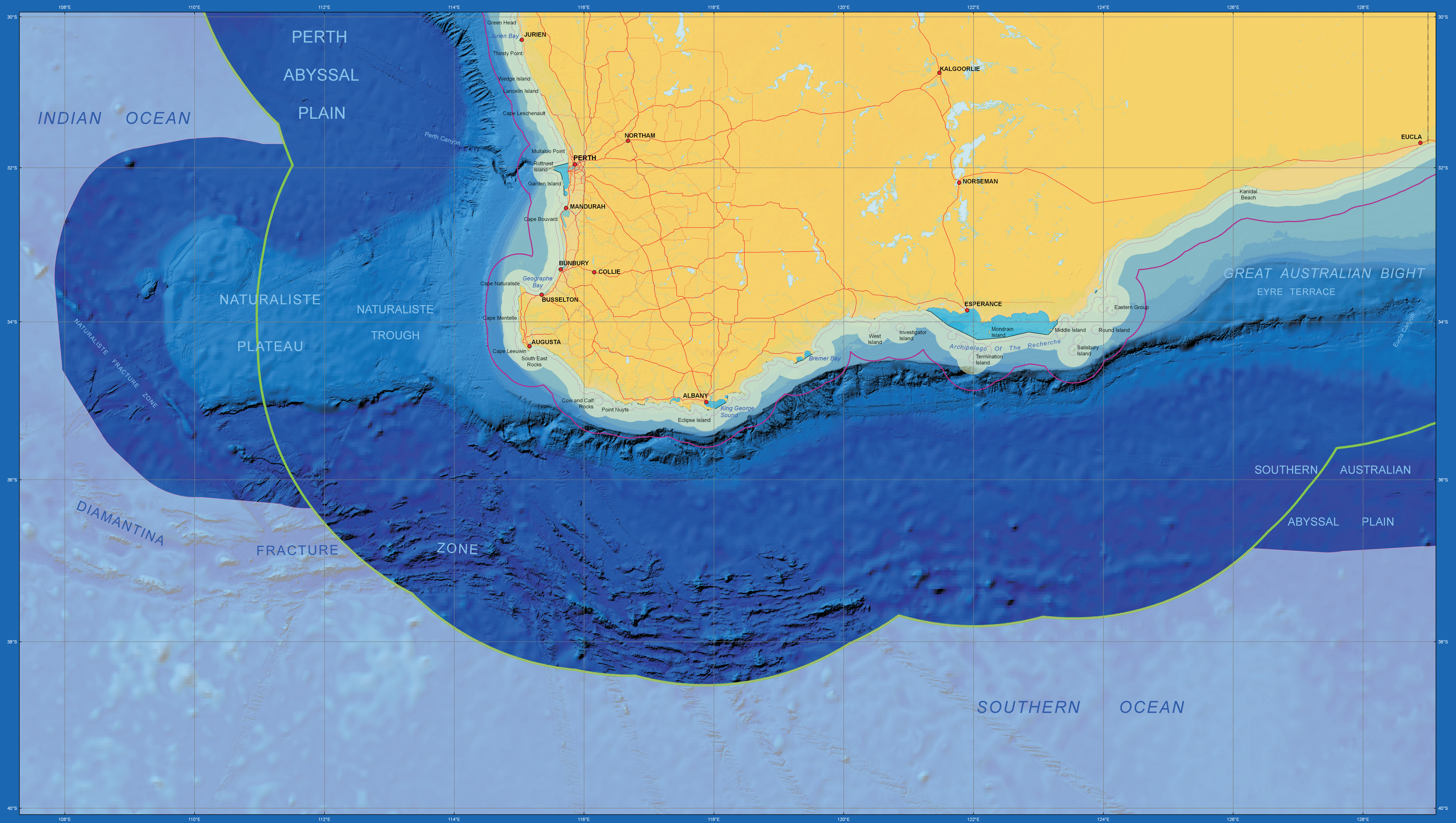
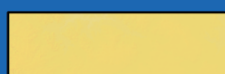






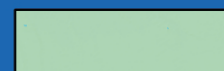



Australia's Maritime Jurisdiction off Southwestern Western Australia



- | | | |
|---|---|--|
|  Land |  Those parts of Australia's territorial sea baseline that traverse water |  Australia's Contiguous Zone limit |
|  Reef / Intertidal |  Limit of Coastal Waters |  Australia's Exclusive Economic Zone limit |
|  Area of Australia's Internal Waters |  Area of Australia's Territorial Sea |  Outer limit of Australia's continental shelf |

Depiction of Marine Areas

Clear regions on this map depict areas where Australia exercises water column, seabed and subsoil jurisdiction, seabed and subsoil jurisdiction only, or fisheries jurisdiction only, as defined in certain treaties.

Light pink shading depicts areas submitted and yet to be resolved (including Australian Antarctic Territory where Australia requested the Commission on the Limits of the Continental Shelf not consider this region for the time being).

Light white shading depicts areas beyond Australian jurisdiction.

QUALIFICATIONS RELATING TO THIS MAP

- The map is indicative only of the location of the territorial sea baselines and the outer limits of Australia's maritime zones, and should NOT be used as a definitive source of information. Some limits may be subject to change.
- The territorial sea baselines and certain maritime zones are established under the *Seas and Submerged Lands Act 1973*.
- Waters described as 'Australia's Internal Waters' are internal waters of Australia for the purposes of international law. They do not equate with waters within the limits of the states or the Northern Territory for constitutional purposes. The extent of the other waters is determined by the Letters Patent relevant to each state and the Northern Territory and the common law.
- Certain limits and boundaries are established under various treaties with neighbouring States (not all are in force).
- Limits of coastal waters adjacent to each of the Australian States and of the Northern Territory are established under the *Coastal Waters (States Powers) Act 1980*, *Coastal Waters (Northern Territory Powers) Act 1980* and the *Offshore Petroleum and Greenhouse Gas Storage Act 2006*.
- In the event of an inconsistency between this map, and the territorial sea baselines or limits established under Australian legislation or the treaties, then the legislative instruments or the treaties shall prevail.
- Except as required by law, the Commonwealth will not be liable for any loss, damage, expense or cost (including any incidental or consequential loss or damage) incurred by any person or organisation arising out of use of, or reliance on, this map.

SCALE 1:1 500 000

0 25 50 Nautical Miles
0 50 100 Kilometres

Mapcarta Projection
World Geodetic System 1984 Datum
Central Meridian 114° E
True scale at 32° S

Background bathymetry image is derived from a combination of a 6 arc second bathymetric and topographic grid by Geoscience Australia 2009 and a grid by W.H.F. Smith and D.T. Sandwell, *Global Seafloor Topography from Satellite Altimetry and Ship Depth Soundings*, *Science* 277, pp. 1955-1962, 26 September 1997.

© Commonwealth of Australia, Geoscience Australia (2010) - GeoCat 86507