

Australian Mines Atlas

The only resource you'll need



WWW 
australianminesatlas.gov.au

For Business and Land Management

The Atlas provides immediate access to current and historical data, maps and images of the Australian minerals industry. Users can easily access material to inform decision making in many scenarios, including mine operation planning, investment and environmental management.

For Mineral Exploration

The Atlas includes mineral potential maps for significant types of gold, base metals and uranium deposits. The maps identify regions prospective for finding new deposits. They provide a continent-wide summary of the main prospective areas in Australia.

For Education

The Atlas is an innovative and hands-on educational resource for teachers and students. Users can create, save and print maps and supporting information for a range of classroom activities.

The site includes:

- Minerals Down Under—online quizzes for primary students
- Rockfiles—a series of web pages for secondary students
- Fact sheets—information to suit tertiary level study
- An interactive history of the Australian minerals industry.



Mount Isa mining operations showing mineral tenements

The Australian Atlas of Mineral Resources, Mines & Processing Centres



© Commonwealth of Australia 2011

For more information, please link to:
www.australianminesatlas.gov.au



Australian Government
Geoscience Australia



The comprehensive website for Australian mineral deposits and mines

The Mines Atlas is an authoritative overview of Australian mineral resources, mines and processing centres.

The Mines Atlas provides sophisticated data, fast facts and interactive mapping, with links to company websites and educational programs.

It includes a click-by-click guide for new users.

SEARCH Australian mines by name, location or commodity.

FIND detailed resource information, mineral occurrences, tenements and infrastructure.

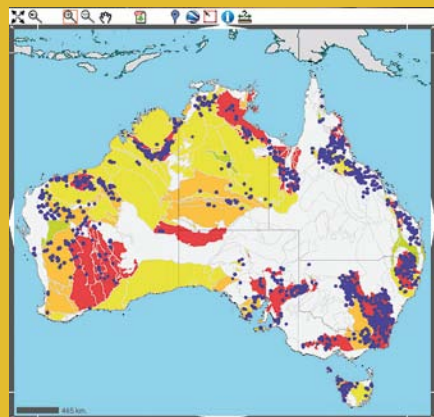
LEARN through educational content for primary, secondary and tertiary students.

CREATE customised maps showing:

- Operating and Historical Mines
- Undeveloped Deposits
- Topographical and Cultural Data
- Satellite Imagery
- Mineral Potential
- Mineral Tenements

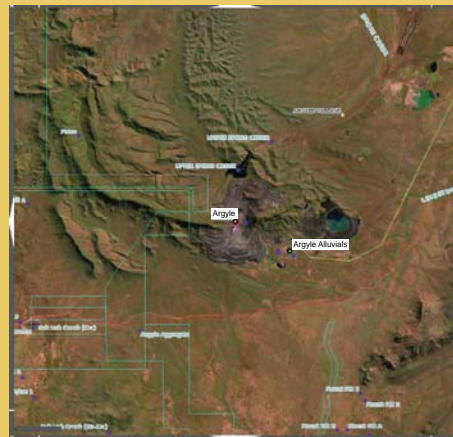
CONNECT to company websites, Google Earth and Google Maps for each mine or deposit.

PRINT individualised maps and commodity fact sheets.



Customised map showing zinc occurrences overlaid on base metal potential

Find resources and surrounding infrastructure



Argyle mining operations in WA showing mineral tenements and satellite imagery

See detailed imagery through links to Google Maps and Google Earth



Argyle open cut diamond mine as linked to in Google Maps

Read detailed mine profiles

Argyle

- Synonyms: AK1
- State: WA
- Commodities: Dmd
- Commodity Name: Diamond - undifferentiated
- Operating Status: operating mine

Location

- Longitude: 120.3839
- Latitude: -16.7116
- Datum: GDA94

Links of Interest

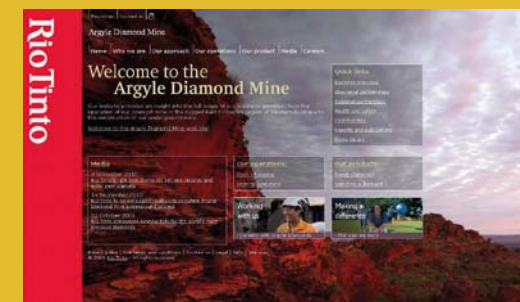
- Rio Tinto - worldwide operations

Reserves and resources associated with this deposit
(Most should comply with the JORC Code)

AK1 Pipe
31-Dec-2009
Rio Tinto Ltd, 2009, Annual Report 2009

		Ore Reserves ¹		Mineral Resources ¹		
		Proved	Probable	Measured	Indicated	Inferred
Tonnage	(Mt)	23	62	11	23	6
Dmd Grade	ct/t	1.1	2.4	3.5	3.7	3.6

Link to industry websites



View Australia's mineral resource data

Commodity	Units	Australia					World	
		Demonstrated Resources Economic (EOR)	Subeconomic Pre-marginal	Inferred Resources (I)	Accessible EDR (%)	JORC Reserves (% of EOR) (c)	Mine Production 2009 (t)	Economic Resources 2009 (t)
Antimony	14 000	130	25	82	73	130	64 (46%)	1200
Bauxite	kt	6.2	0.2	1.4	0.93	5.4	2.4 (44%)	0.005
Black coal	kt	60.7	3.3	9.2	125.2	43.7	34.2 (33%)	0.445 (3)
in situ recoverable	kt	43.8	1.8	5.9	79.2			669 (3)
Brown coal	kt	41.2	41.5	18.1	112.4			
in situ recoverable	kt	37.1	37.1	15.3	101.2	30.1	4.7 (3) (13%)	0.000 (3)
Cadmium	1t Cd	60.8	13.0	10.2	0.3	60.8	51.3 (84%)	0.46**
Cobalt	1t Co	1303	269	241	1471	1363	293 (22%)	4.63 (3)
Copper	1M Cu	80.4	4.5	1.0	36.4	80.4	23.2 (29%)	0.853