

---

# EARTHQUAKES AND YOU

---

LIVING MORE SAFELY WITH NATURAL HAZARDS



**Department of Resources, Energy and Tourism**

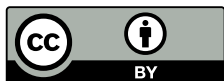
Minister for Resources and Energy: The Hon. Gary Grey, AO MP

Secretary: Mr Blair Comley, PSM

**Geoscience Australia**

Chief Executive Officer: Dr Chris Pigram

This booklet is published with the permission of the CEO, Geoscience Australia



© Commonwealth of Australia (Geoscience Australia) 2013

With the exception of the Commonwealth Coat of Arms and where otherwise noted, all material in this publication is provided under a Creative Commons Attribution 3.0 Australia Licence (<http://creativecommons.org/licenses/by/3.0/au/>).

Geoscience Australia has tried to make the information in this product as accurate as possible. However, it does not guarantee that the information is totally accurate or complete. Therefore, you should not solely rely on this information when making a commercial decision.

ISBN 978-1-922201-44-7 (Print)

ISBN 978-1-922201-80-5 (PDF)

GeoCat 75909

Illustrations by Stuart McMillen

---

# EARTHQUAKES AND YOU

---

LIVING MORE SAFELY WITH NATURAL HAZARDS



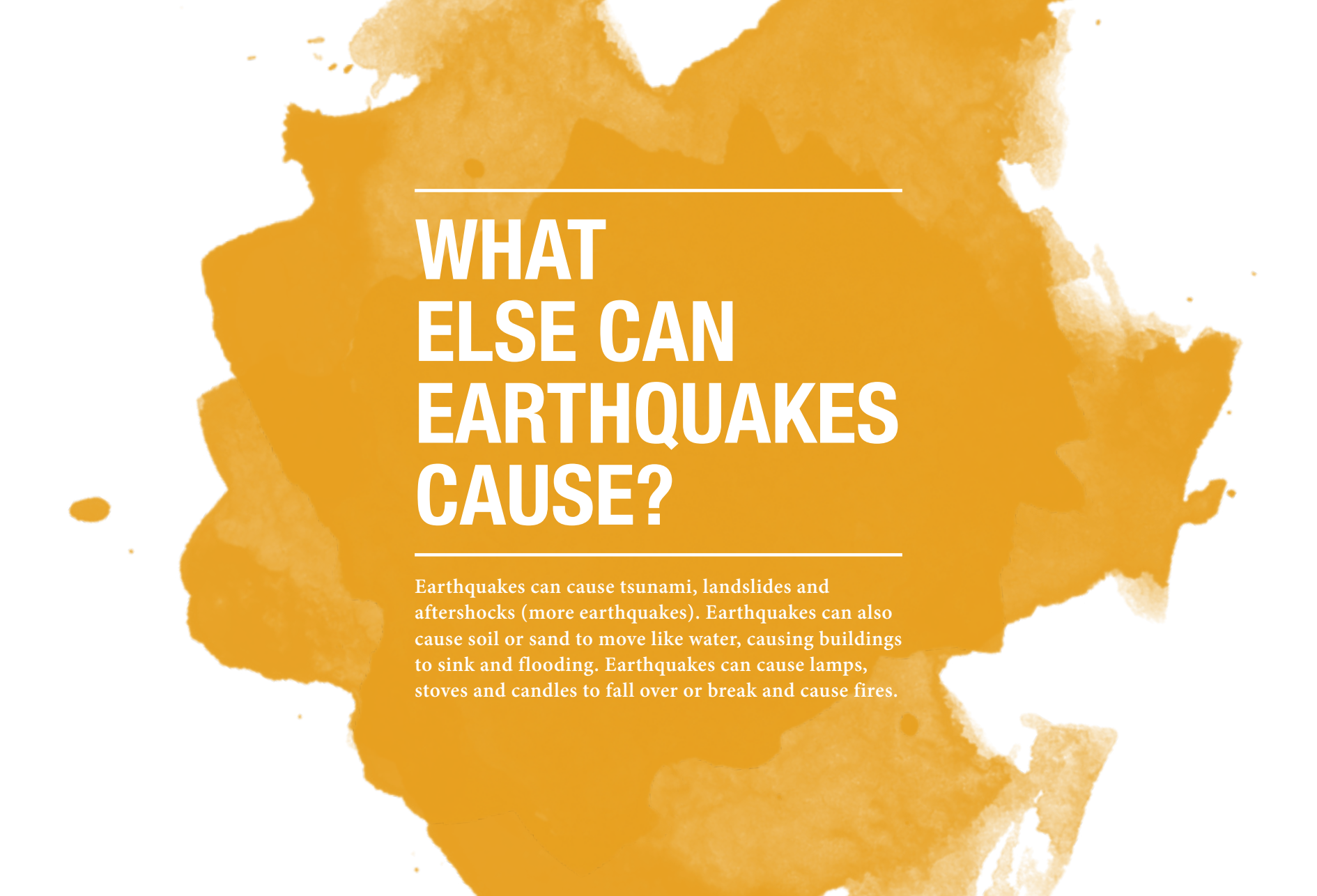
A large, abstract orange watercolor splash or ink blot covers the left and center of the page, creating a textured, organic shape. The right side of the page is plain white.

# WHAT IS AN EARTHQUAKE?

An earthquake happens when rock deep in the earth moves or breaks. This makes the ground at the surface shake.





The background of the entire page is a large, abstract splash of orange watercolor paint. The splash is darker in the center and fades out towards the edges, creating a textured, organic feel. It covers most of the page, leaving some white space at the top and bottom.

---

# WHAT ELSE CAN EARTHQUAKES CAUSE?

---

Earthquakes can cause tsunamis, landslides and aftershocks (more earthquakes). Earthquakes can also cause soil or sand to move like water, causing buildings to sink and flooding. Earthquakes can cause lamps, stoves and candles to fall over or break and cause fires.

The background of the entire page is a large, irregular orange watercolor splash. It has a textured, painterly appearance with various shades of orange and yellow, and some darker spots. The splash is centered and covers most of the page area.

---

# CAN EARTHQUAKES BE PREDICTED?

---

No. Scientists can tell where earthquakes may happen, but they do not know when. This means you will have no warning that an earthquake is about to happen. You need to take care for your own safety before, during and after earthquakes.



The background of the slide is a large, abstract orange watercolor splash that covers most of the frame. The splash has irregular, feathered edges and varying shades of orange, from light to dark. It is centered and takes up the majority of the visual space.

# WHAT YOU CAN DO BEFORE

- » Make sure you have a first aid kit, radio and torch with batteries
- » Build public buildings, such as schools, hospitals and power stations strong enough to receive little damage from earthquakes
- » Have enough stocks of water and food to last up to a week
- » Have a plan for what you will do if there is an earthquake and a designated evacuation safe place.

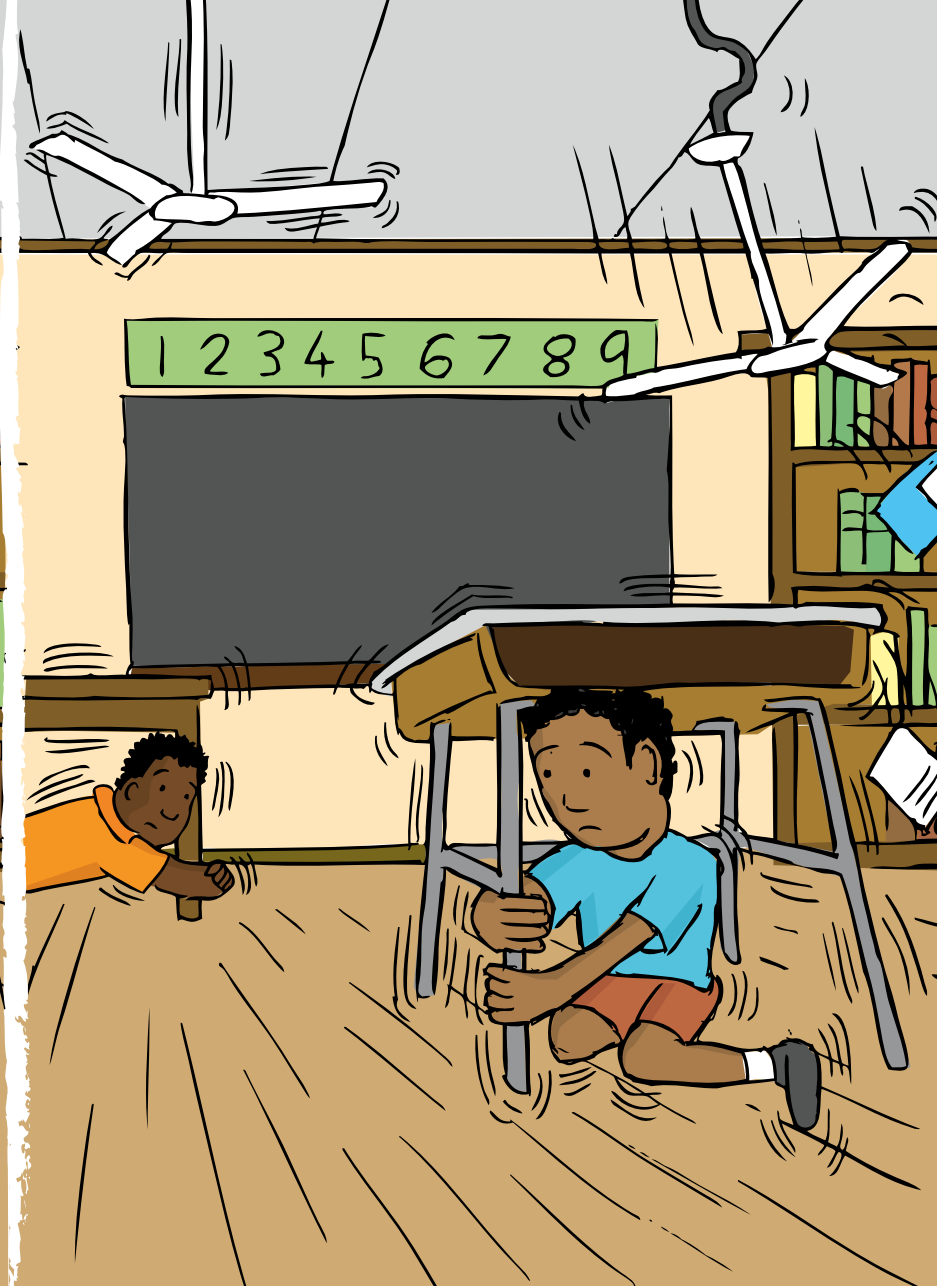
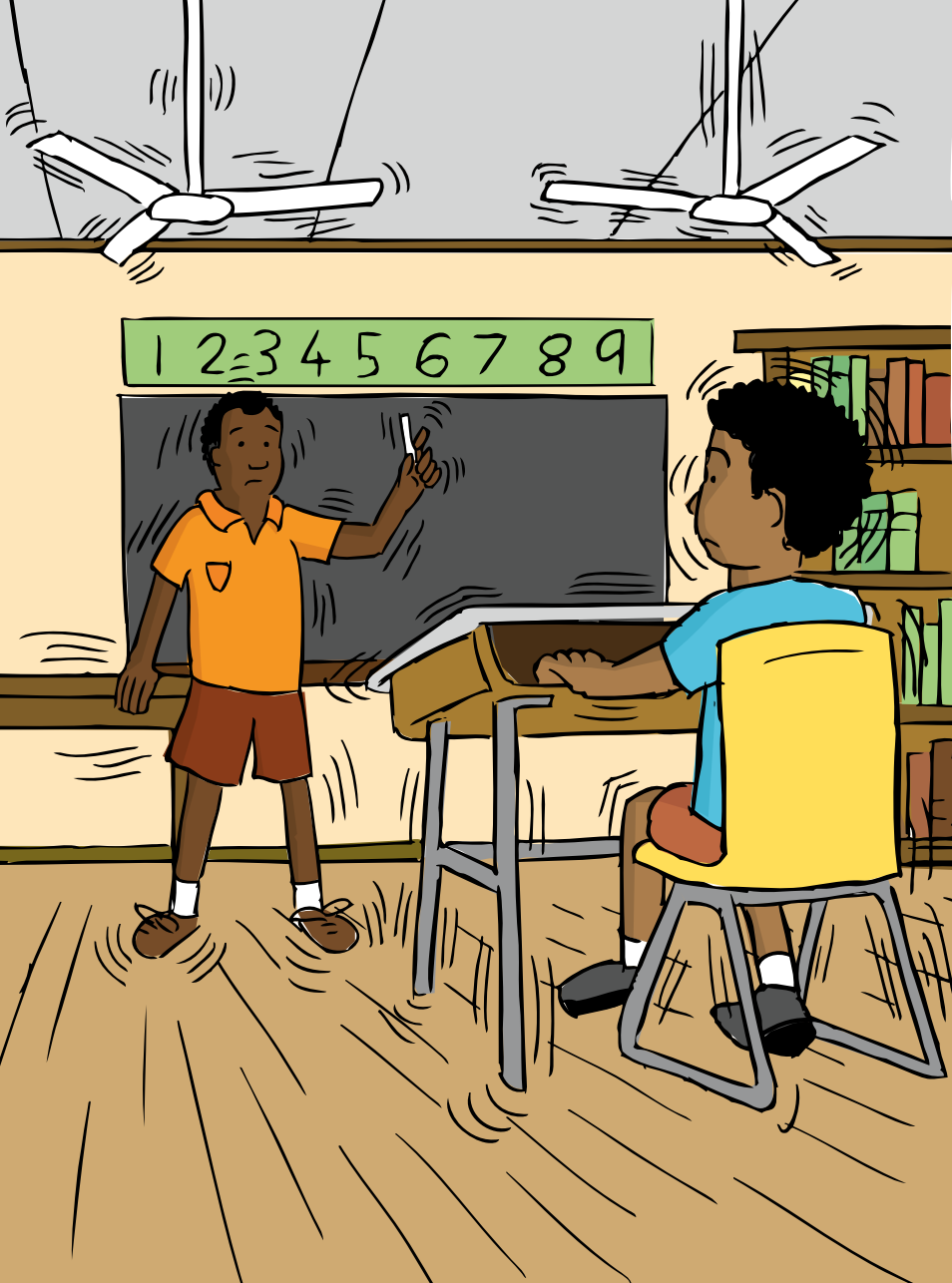




# WHAT YOU CAN DO DURING

## IF YOU ARE INSIDE A BUILDING

- » **DROP** – drop to the ground
- » **COVER** – find shelter under something, cover your head
- » **HOLD ON** – hold on to something until the shaking stops.







---

## IF YOU ARE OUTSIDE

---

Move into a clear area away from buildings, powerlines and trees and drop to the ground. If there is no clear area around:

- » **DROP** – drop to the ground
- » **COVER** – find shelter under something, cover your head
- » **HOLD ON** – hold on to something until the shaking stops.

Stay away from powerlines and trees.

---

## IF YOU ARE IN A CAR

---

Slow down and drive to a clear area, pull over to the side of the road, and stop.



# WHAT YOU CAN DO AFTER

- » Expect aftershocks
- » Stay out of severely damaged buildings as aftershocks can cause them to collapse
- » Inspect your home for damage. If it is unsafe, move everyone out
- » Turn on your radio and listen for instructions
- » Check yourself and others for injuries. Give first aid for serious injuries
- » If you live along the coast, look out for tsunami that may follow the earthquake. Move to higher ground if the shaking is enough to make you fall over or if the sea goes out
- » Look out for rockfalls and landslides.





A large, abstract orange watercolor splash serves as the background for the entire page. The splash is centered and has irregular, feathered edges, with some darker orange areas and some lighter, more transparent areas. It covers most of the page, leaving some white space around the edges.

# REMEMBER

- » **DROP** – drop to the ground
- » **COVER** – find shelter under something, cover your head
- » **HOLD ON** – hold on to something until the shaking stops.



---

# PORT MORESBY GEOPHYSICAL OBSERVATORY

---

P.O. Box 323,  
Port Moresby, National Capital District  
Papua New Guinea

Telephone: 321 4500  
Fax: 321 3976  
[pmgo@daltron.com.pg](mailto:pmgo@daltron.com.pg)

---

# RABAUL VOLCANOLOGICAL OBSERVATORY

---

P.O. Box 3386  
Kokopo ENBP, East New Britain  
Papua New Guinea

Telephone: (675) 982 1699  
Fax: (675) 982 1004  
[hguria@global.net.pg](mailto:hguria@global.net.pg)

---

# REGIONAL RISK, GEOSCIENCE AUSTRALIA

---

GPO Box 378  
Canberra, ACT  
2601, Australia  
[hazards@ga.gov.au](mailto:hazards@ga.gov.au)



**Australian Government**  
**Geoscience Australia**  
**AusAID**



LIVING MORE SAFELY WITH  
NATURAL HAZARDS