

EARTHQUAKES AND YOU

LIVING MORE SAFELY WITH NATURAL HAZARDS



AN EARTHQUAKE HAPPENS WHEN ROCK DEEP IN THE EARTH MOVES OR BREAKS. THIS MAKES THE GROUND AT THE SURFACE SHAKE.

Earthquakes can cause tsunamis, landslides and aftershocks (more earthquakes). Earthquakes can also cause soil or sand to behave like water, causing buildings to sink and flooding. Earthquakes can cause lamps, stoves and candles to fall over or break and cause fires. Earthquakes cannot be predicted.



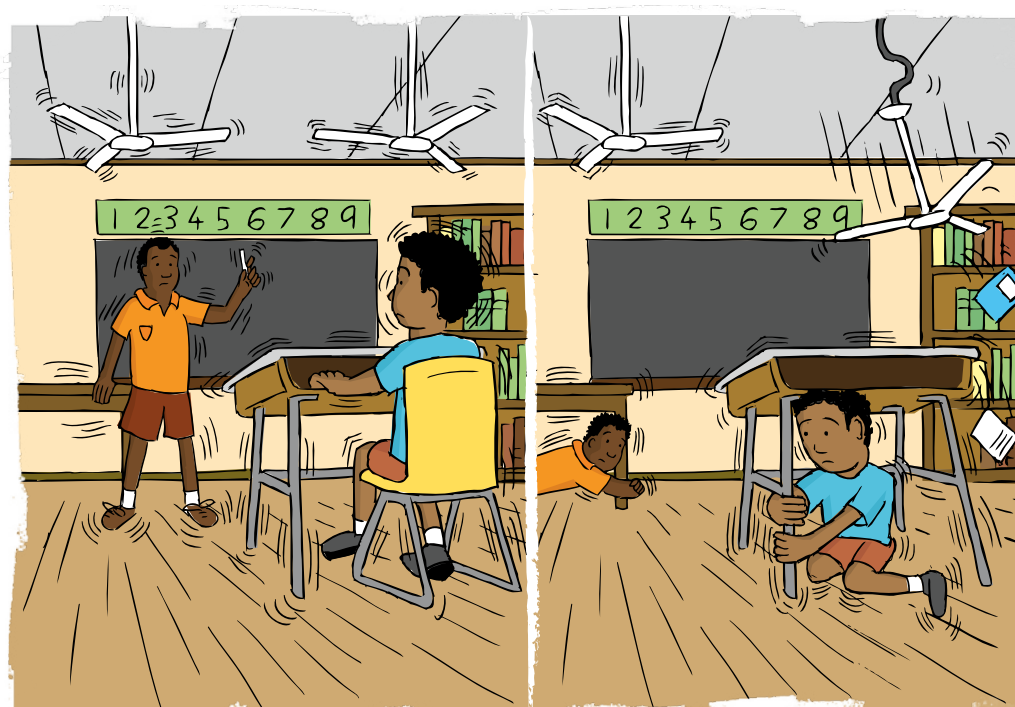
WHAT YOU CAN DO BEFORE

Have stocks of water and food. Have a chosen safe place and an evacuation plan.



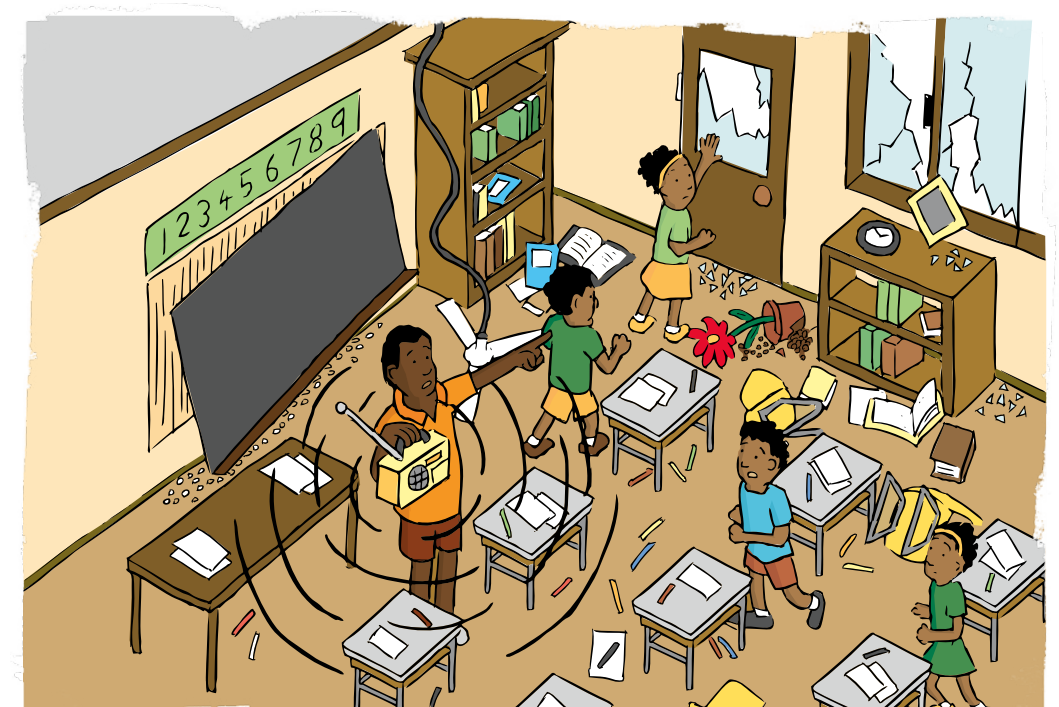
DURING

If you are inside a building, stay indoors and drop, cover, hold. If you are outside, move into a clear area.



AFTER

Check for injuries. Expect aftershocks. Get out of damaged buildings. Look out for tsunamis, rockfalls and landslides.



Port Moresby Geophysical Observatory • P.O. Box 323, Port Moresby, National Capital District • pmgo@daltron.com.pg • Telephone: (675) 321 4500 • Fax: (675) 321 3976
Rabaul Volcanological Observatory • P.O. Box 3386, Kokopo, East New Britain • Telephone: (675) 982 1699 • Fax: (675) 982 1004 • hguria@global.net.pg
Regional Risk Section, Geoscience Australia • GPO Box 378, Canberra, ACT, 2601, Australia • hazards@ga.gov.au