
TSUNAMI AND YOU

LIVING MORE SAFELY WITH NATURAL HAZARDS



Department of Resources, Energy and Tourism

Minister for Resources and Energy: The Hon. Gary Grey, AO MP

Secretary: Mr Blair Comley, PSM

Geoscience Australia

Chief Executive Officer: Dr Chris Pigram

This booklet is published with the permission of the CEO, Geoscience Australia



© Commonwealth of Australia (Geoscience Australia) 2013

With the exception of the Commonwealth Coat of Arms and where otherwise noted, all material in this publication is provided under a Creative Commons Attribution 3.0 Australia Licence (<http://creativecommons.org/licenses/by/3.0/au/>).

Geoscience Australia has tried to make the information in this product as accurate as possible. However, it does not guarantee that the information is totally accurate or complete. Therefore, you should not solely rely on this information when making a commercial decision.

ISBN 978-1-922201-45-4 (Print)

ISBN 978-1-922201-81-2 (PDF)

GeoCat 75909

Illustrations by Stuart McMillen

TSUNAMI AND YOU

LIVING MORE SAFELY WITH NATURAL HAZARDS



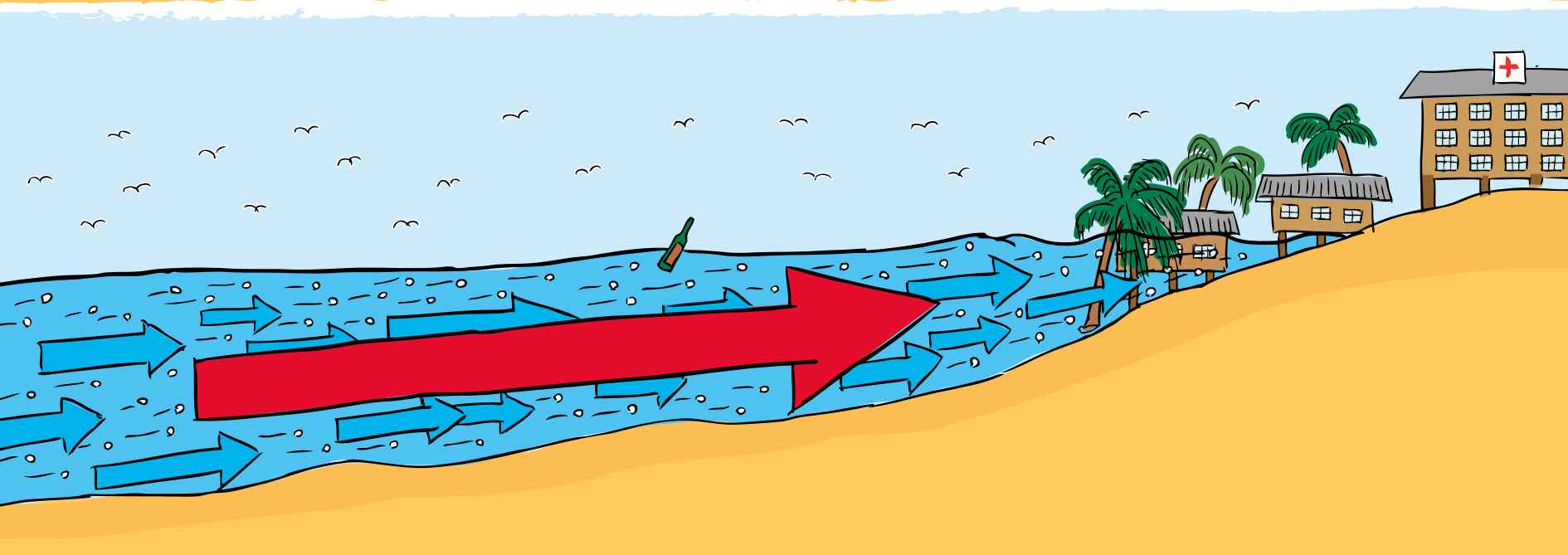
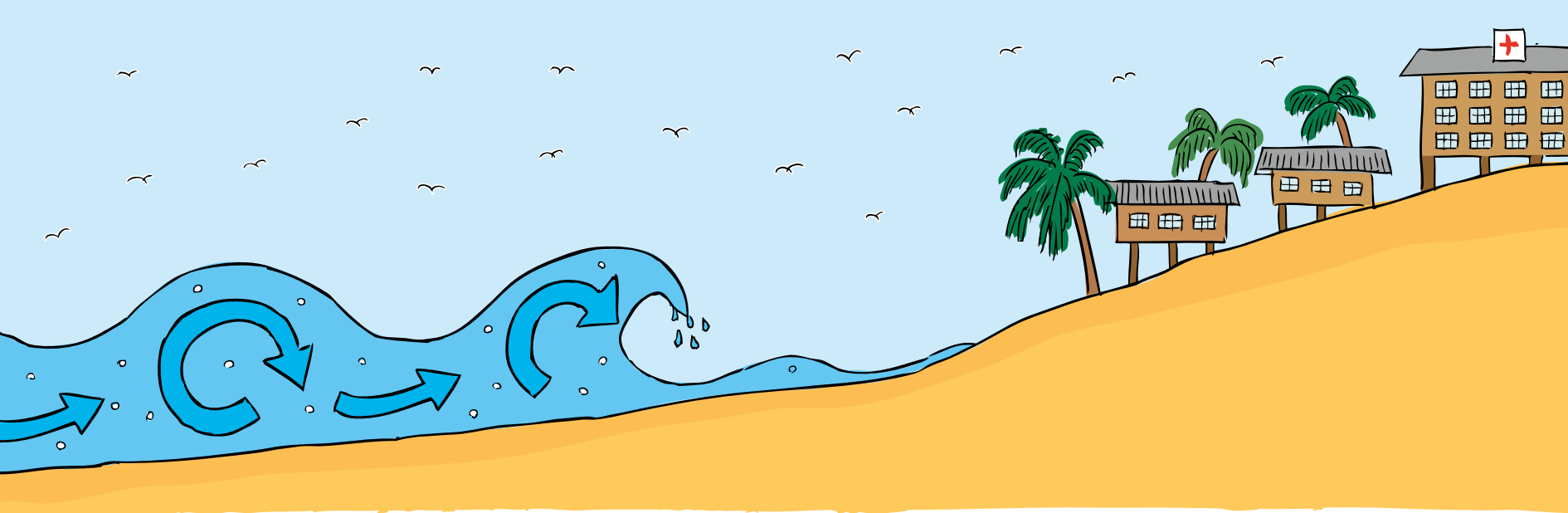


WHAT IS A TSUNAMI?

A tsunami is a movement of water that is caused by an earthquake, undersea landslide or volcanic eruption. When the earthquake, landslide or volcanic eruption causes movement on the sea floor this causes the water to move and creates large ripples, like when a rock is dropped in water. It comes as a set of waves, up to 20 m high.

Unlike normal waves, tsunami waves are very powerful and can carry things, such as people, buildings, trees, and cars, in their path. Tsunami can destroy buildings and permanently flood land.

Much of the East New Britain coastline can be affected by tsunami, so if you live near the sea you should be aware of the warning signs of a tsunami and what to do if a tsunami happens.



A large, abstract blue watercolor splash shape is centered on a white background. The splash has irregular, feathered edges and varying shades of blue, from light to dark. It serves as a backdrop for the text.

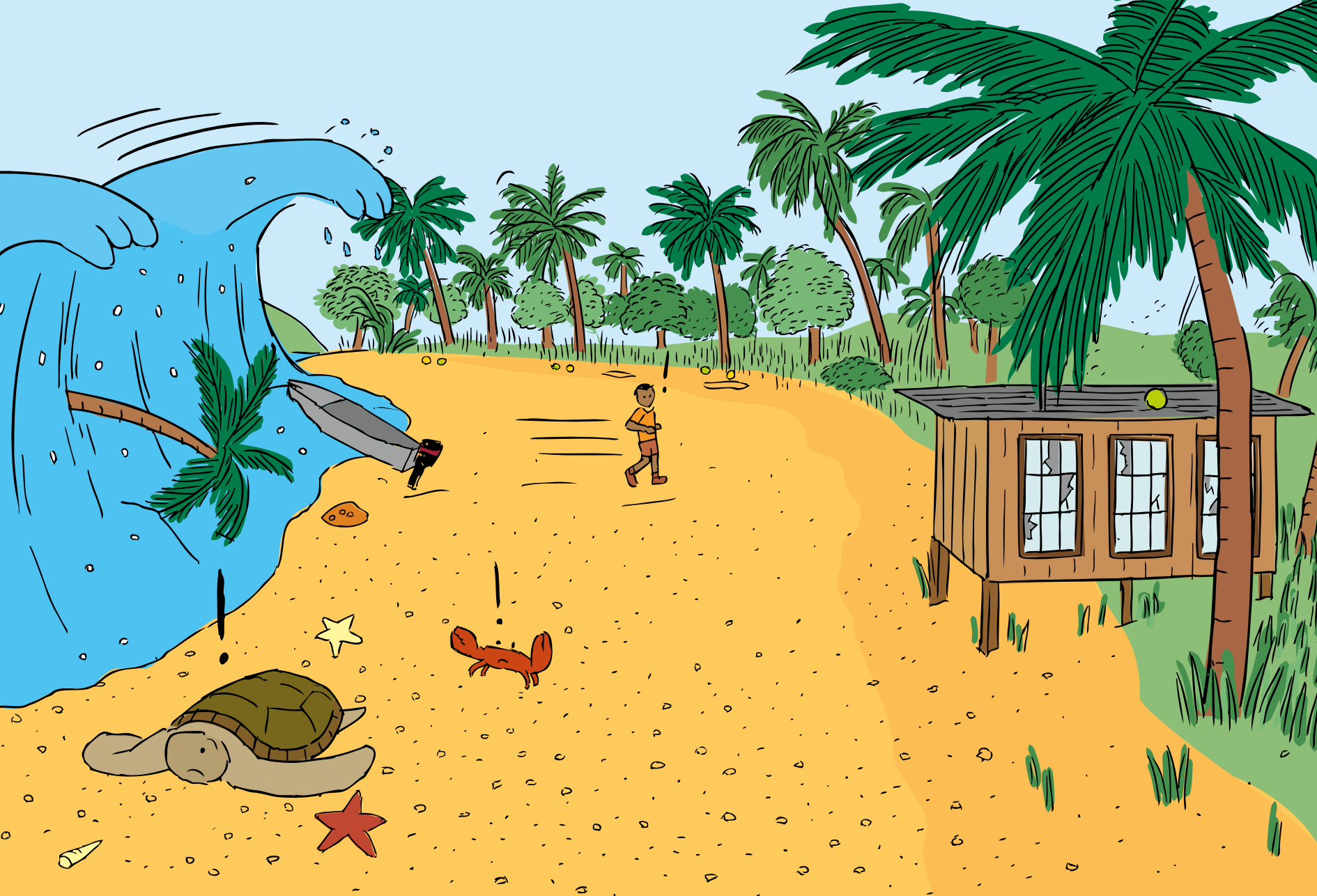
WARNING SIGNS

- » **SHAKE** – Strong earthquake shaking
- » **DROP** – The sea may go out quickly
- » **ROAR** – A roaring noise may be heard when the tsunami is near.

If you are in a boat you may not notice a tsunami as in the deep ocean tsunamis are only small waves.







A large, abstract blue watercolor splash or ink blot covers the background of the page. It has irregular, feathered edges and varying shades of blue, from deep navy to a lighter, misty blue. The splash is centered and takes up most of the frame.

WHAT YOU CAN DO BEFORE

Build public buildings, such as schools, hospitals and power stations, in a safe place on higher land away from the coastline.

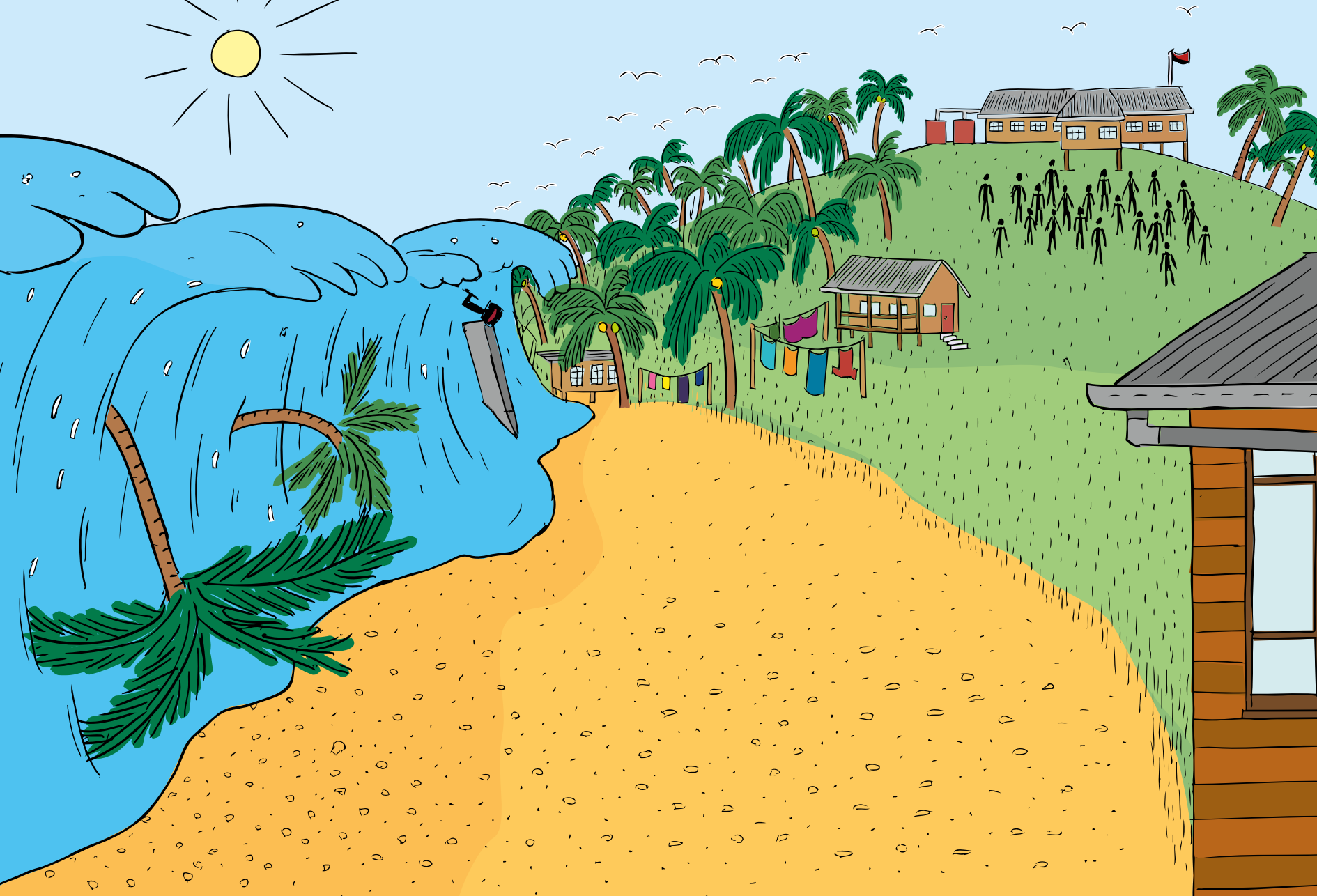
Make and practise an evacuation plan for what you will do if there are warning signs of a tsunami. Make sure your safe place is within 15 minutes from your home, school or workplace and on high ground.



A large, abstract blue watercolor splash or ink blot covers the background of the page. It has irregular, feathered edges and varying shades of blue, from deep navy to light sky blue. The splash is centered and takes up most of the frame.

WHAT YOU CAN DO DURING

- » Move to a safe place (uphill or further inland)
- » Do not wait to be told what to do
- » Do not wait to see the tsunami coming as you will not be able to run faster than it
- » Do not try to save your belongings, tsunami can move very quickly
- » If you see a tsunami and there is no time to run, look for a strong concrete building and climb to the top. If you cannot find a building, climb up a strong tree
- » If you are swept up by a tsunami, look for something to help you float
- » Turn on the radio to listen for information.





WHAT YOU CAN DO AFTER

- » Wait for several hours before returning, if possible, wait for officials to tell you it is safe to return
- » Be aware that there will be more than one tsunami wave and more waves can come for hours
- » Don't go into damaged houses.





REMEMBER

If there is an earthquake so strong that you cannot stand, make sure you go to higher ground or further inland as a tsunami may happen very soon.

- » **SHAKE** – Strong earthquake shaking
- » **DROP** – The sea may go out quickly
- » **ROAR** – A roaring noise will be heard when the tsunami is near.

PORT MORESBY GEOPHYSICAL OBSERVATORY

P.O. Box 323
Port Moresby, National Capital District
Papua New Guinea

Telephone: (675) 321 4500
Fax: (675) 321 3976
pmgo@daltron.com.pg

RABAUL VOLCANOLOGICAL OBSERVATORY

P.O. Box 3386
Kokopo ENBP, East New Britain
Papua New Guinea

Telephone: (675) 982 1699
Fax: (675) 982 1004
hguria@global.net.pg

REGIONAL RISK, GEOSCIENCE AUSTRALIA

GPO Box 378
Canberra, ACT
2601, Australia
hazards@ga.gov.au



Australian Government
Geoscience Australia
AusAID



LIVING MORE SAFELY WITH
NATURAL HAZARDS