



Australian Government
Department of Resources,
Energy and Tourism
Geoscience Australia
Bureau of Resources and
Energy Economics

Mineral and Energy Resources Major Projects

SCALE 1: 10 000 000
0 250 500 kilometres
LAMBERT CONFORMAL CONIC PROJECTION
Central Meridian: 134°E Standard Parallels: 18°S, 36°S
Geocentric Datum of Australia

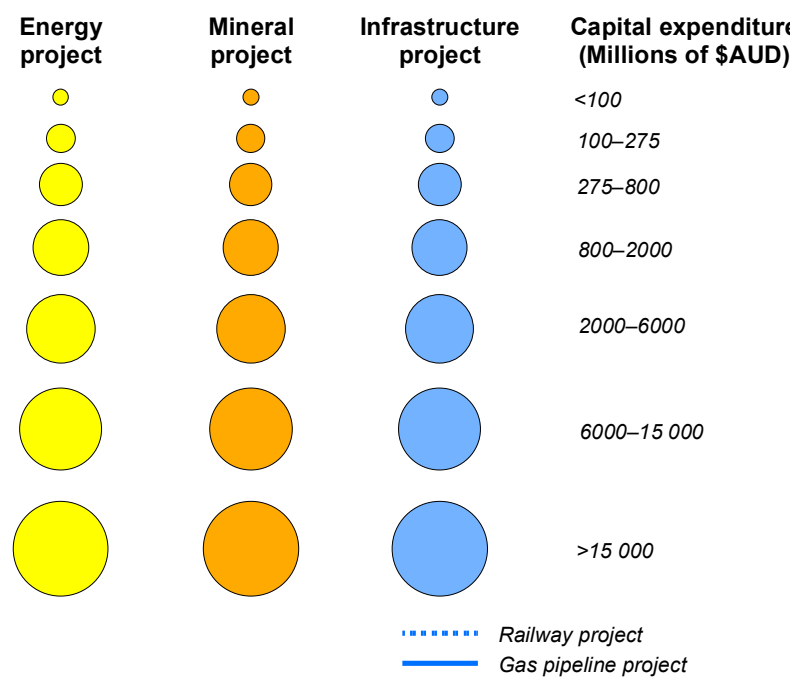
This map depicts Australia's advanced mineral, energy and related infrastructure resource projects. Also shown are operating mines, producing petroleum fields and petroleum pipelines. Operating mines are mines that were operating at the end of 2012. The map illustrates broadly the geographic distribution of the mines and petroleum fields, and a range of broadly grouped commodities.

The map also shows simplified surface geology which is overlaid on a greyscale image of the magnetic response of Australia's geology derived from airborne surveys.

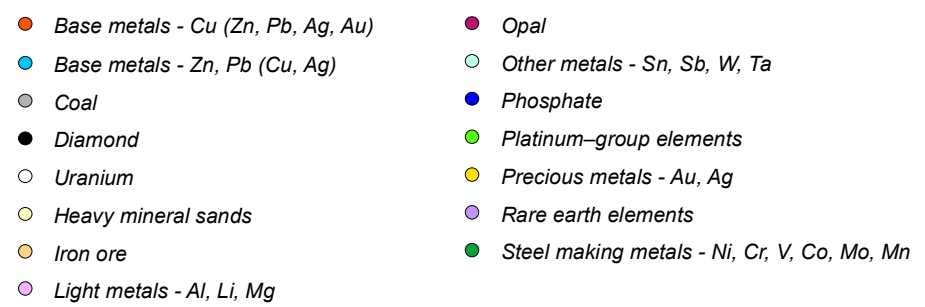
Data for the committed projects on this map was provided by the Bureau of Resource and Energy Economics (BREE) and is correct as at October 2012. A copy of the report containing this data is available at:
<http://www.bree.gov.au/documents/publications/resources/Mining-Industry-Major-Projects.pdf>

Further information can also be found on the Internet at:
<http://www.ga.gov.au/minerals/projects/current-projects/exploration-promotion.html>

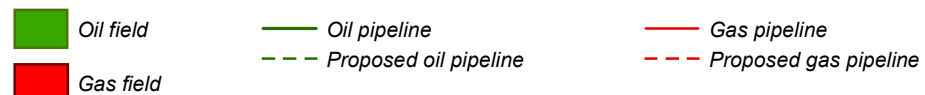
Additional information on operating mines, developing mines or mineral deposits on this map is available from the Australian Mines Atlas website:
<http://www.australianminesatlas.gov.au/>



Operating mine and commodity type

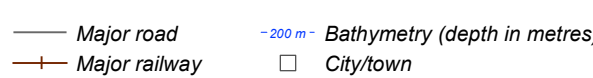


Petroleum



Field outlines are provided by Encom GPlinfo, a Pitney Bowes Software (PBS) Pty Ltd product. Whilst all care is taken in the compilation of the field outlines by PBS, no warranty is provided re the accuracy or completeness of the information, and it is the responsibility of the Customer to ensure, by independent means, that those parts of the information used by it are correct before any reliance is placed on them.

Topographic features



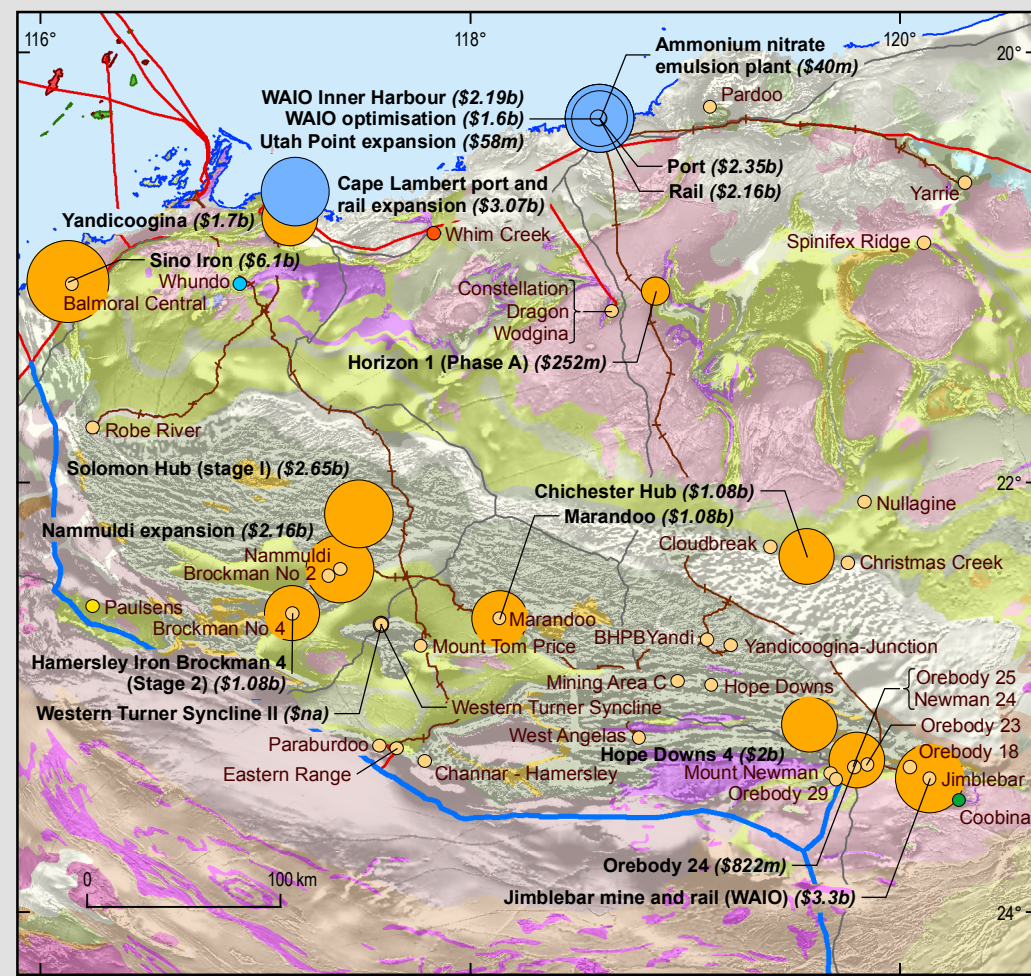
Compiled by Anthony Senior and Roger Skirrow, Mineral Exploration Promotion Section.
Cartography by Chris Evenden and David Arnold, Products and Promotion Section.

Geoscience Australia acknowledges the assistance provided by State and Northern Territory geoscience agencies in the preparation of this map.

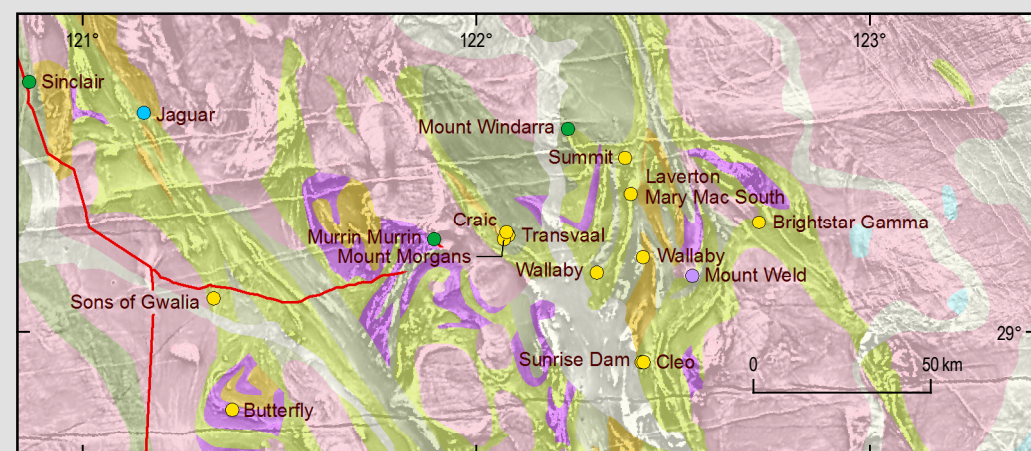
© Commonwealth of Australia (Geoscience Australia) 2013.

With the exception of the Commonwealth Coat of Arms and where otherwise noted, all material on this publication is provided under a Creative Commons Attribution 3.0 Australia Licence
<http://creativecommons.org/licenses/by/3.0.au/>

GeoCat No. 75935



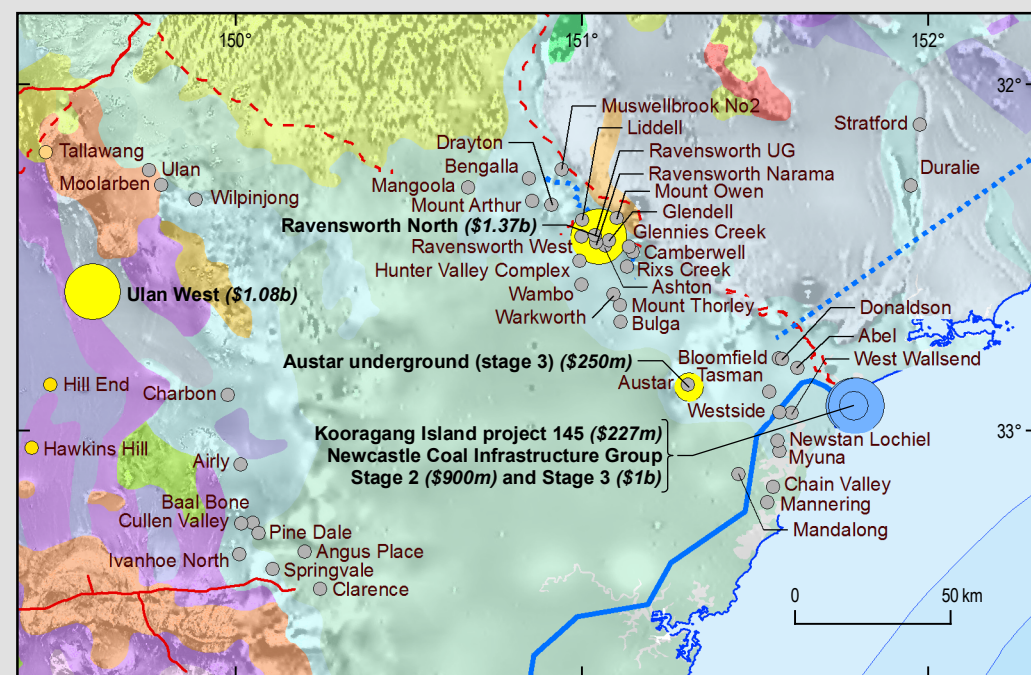
INSET 1: Pilbara Region



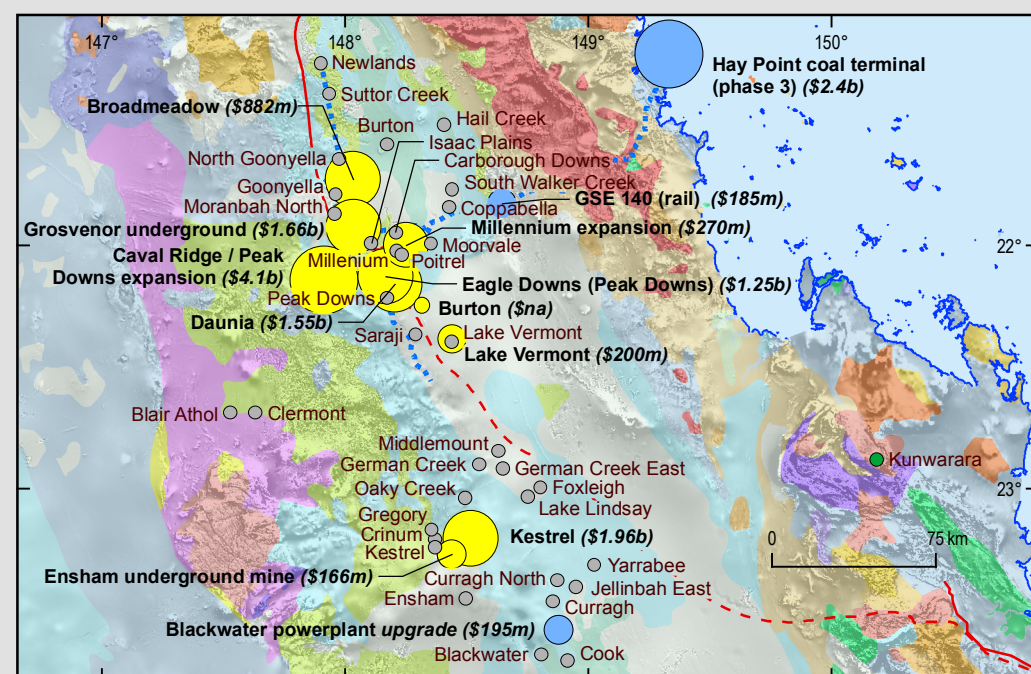
INSET 2: Northeastern Goldfields



INSET 3: Eastern Goldfields



INSET 4: Hunter Region



INSET 5: Bowen Basin Region

