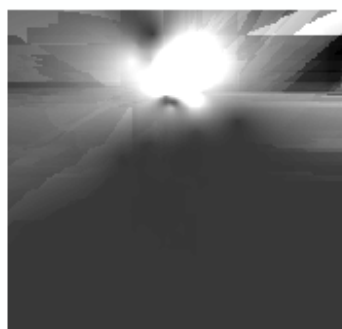


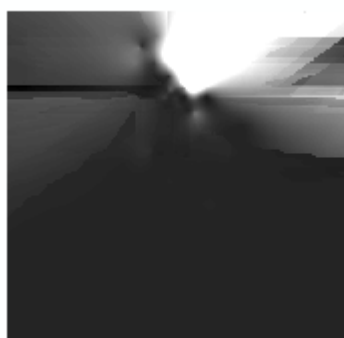
## 13 Data worth

### 13a Great Artesian Basin GABtran data worth

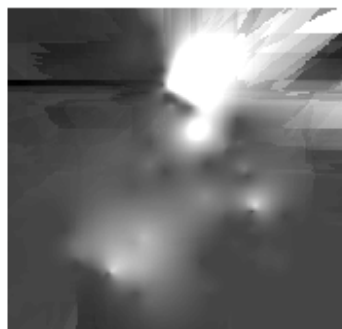
<b>Abstract</b>	<p>This data set contains spatial data that represent the results of data worth analyses based on linear prediction uncertainty analysis and using the original GABtran groundwater flow model. Datasets with the suffix "increase" represent the data worth of observations calculated from their inclusion in a model calibration process. Datasets with the suffix "decrease" represent the data worth of observations calculated from their removal from a model calibration process. The remaining part of the filename indicates for which GABWRA reporting region the dataset relates. Data is available in ASCII grid format. Projection information is in the file GABWRA.prj.</p> <p>Cell size is 5000m x 5000m 'No data' value is -9999 Projection is Albers equal area conic, with central meridian 143 degrees longitude, standard parallels at -21 and -29 degrees latitude and latitude of projection's origin at -25.</p> <p>This data and metadata were produced by CSIRO for the Great Artesian Basin Water Resource Assessment. The data is used in figures 5.10-5.16 of Welsh WD, Moore CR, Turnadge CJ, Smith AJ and Barr TM (2012) "Modelling of climate and groundwater development. A technical report to the Australian Government from the CSIRO Great Artesian Basin Water Resource Assessment ". CSIRO Water for a Healthy Country Flagship, Australia.</p> <p>This dataset and associated metadata can be obtained from <a href="http://www.ga.gov.au">www.ga.gov.au</a>, using catalogue number 76146.</p>
<b>Lineage</b>	<p>This data set is based upon outputs from predictive uncertainty analyses based upon the GABtran, Cape York and QWC groundwater flow models.</p> <p>For more information, please refer to Welsh WD, Moore CR, Turnadge CJ, Smith AJ and Barr TM (2012) "Modelling of climate and groundwater development. A technical report to the Australian Government from the CSIRO Great Artesian Basin Water Resource Assessment ". CSIRO Water for a Healthy Country Flagship, Australia.</p>
<b>Extent</b>	N: -10.68753; S: -33.02301; W: 132.1544; E: 152.7543 / AU-NSW/QLD/SA
<b>Scale</b>	Scale: 1:6M. Resolution: cell size is 5000 m x 5000 m



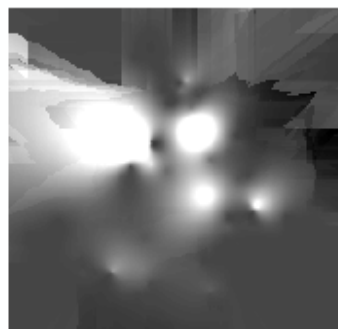
Carpentaria decrease



Carpentaria increase



Central Eromanga dec



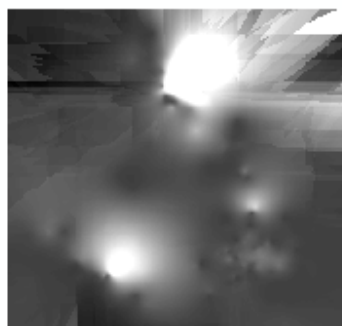
Central Eromanga incr



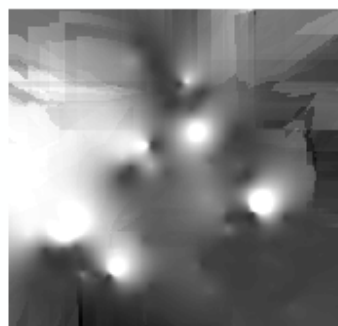
Dalhousie Springs dec



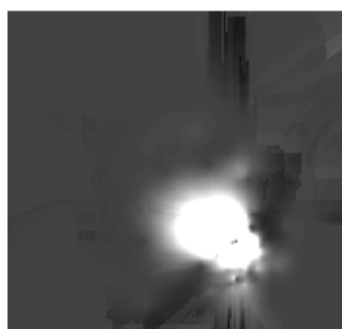
Dalhousie Springs incr



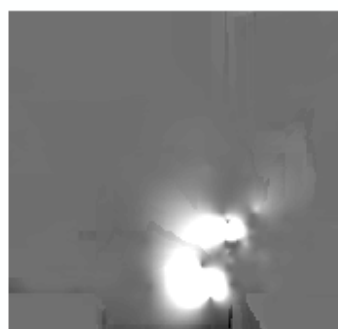
Whole of GAB decrease



Whole of GAB increase



Granite Springs decrease



Granite Springs increase



Surat decrease



Surat increase



Western Eromanga dec



Western Eromanga inc