

Australian Operating Mines Map 2013



AUSTRALIAN OPERATING MINES MAP 2013

Scale 1:7 500 000



LAMBERT CONFORMAL CONIC PROJECTION
Central Meridian: 134°E Standard Parallels: 18°S, 36°S
Geocentric Datum of Australia

This map shows the location of mines operating at the end of 2013, developing mines and mineral deposits in Australia. Developing mines are deposits where mine site development has commenced or where all approvals for mining have been received by the end of 2013. Mineral deposits highlight areas of known mineralisation with reported significant Joint Ore Reserves Committee (JORC) compliant Measured and Indicated Resources that are not currently being mined or developed. Mineral deposits of platinum-group elements (PGE) are those with a reported significant resource. Closed mines or mines not operating at the end of 2013 are not displayed.

Mines and mineral deposits are shown as small symbols coloured by commodity type. The mine and deposit information is superimposed on a generalised surface geology map of Australia. The coloured areas represent rocks of different ages (see legend below) outcropping at the surface of the Earth. The greyscale background image on which the geology is superimposed represents the aeromagnetic response (0.5 vertical derivative of total magnetic intensity) of rocks at surface and at depth. In areas of younger basin and regolith cover (grey areas) the aeromagnetics shows the older geology contained under this cover. In some areas these buried rocks are prospective for undiscovered mineral deposits.

Age (Ma)	Period	Era
0	Quaternary	CENOZOIC
0 - 65	Cenozoic	
65 - 252	Cretaceous	MESOZOIC
145 - 201	Jurassic	
201 - 252	Triassic	
252 - 299	Permian	
299 - 354	Carboniferous	PALEOZOIC
354 - 419	Devonian	
419 - 444	Silurian	
444 - 485	Ordovician	
485 - 540	Cambrian	PROTEROZOIC
540 - 1600	Neoproterozoic	
1600 - 2500	Mesoproterozoic	ARCHEAN
2500 - 4000	Paleoproterozoic	

Commodity type
● Base metals - Cu, Zn, Pb, Ag, Au
● Base metals - Zn, Pb (Cu, Ag)
● Coal
● Diamond
● Uranium
● Heavy mineral sands
● Iron ore
● Light metals - Al, Li, Mg
● Opal
● Other metals - Sn, Sb, W, Ta
● Phosphate
● Platinum-group elements
● Precious metals - Au, Ag
● Rare earth elements
● Steel making metals - Ni, Cr, V, Co, Mo, Mn

Mine status
○ Operating mine
△ Developing mine
□ Mineral deposit

— Bathymetry contour (depth in metres)
— Major road
□ Capital city

Compiled by Anthony Senior, Mineral Exploration Promotion Section.
Cartography by David Arnold, Products and Promotion Section.
Printed by Paragon Print Pty Ltd.
Image courtesy of BHP Billiton.

It is recommended that this map be referred to as: Senior, A., 2014. *Australian Operating Mines Map* (14th Edition). Scale 1:7 500 000, Geoscience Australia, Canberra.
Further information can also be found on the Internet at:
<http://www.ga.gov.au/minerals/projects/current/projects/exploration-promotion.html>

Additional information on operating mines, developing mines or mineral deposits on this map is available from the Australian Mines Atlas website: <http://www.australianminesatlas.gov.au/>

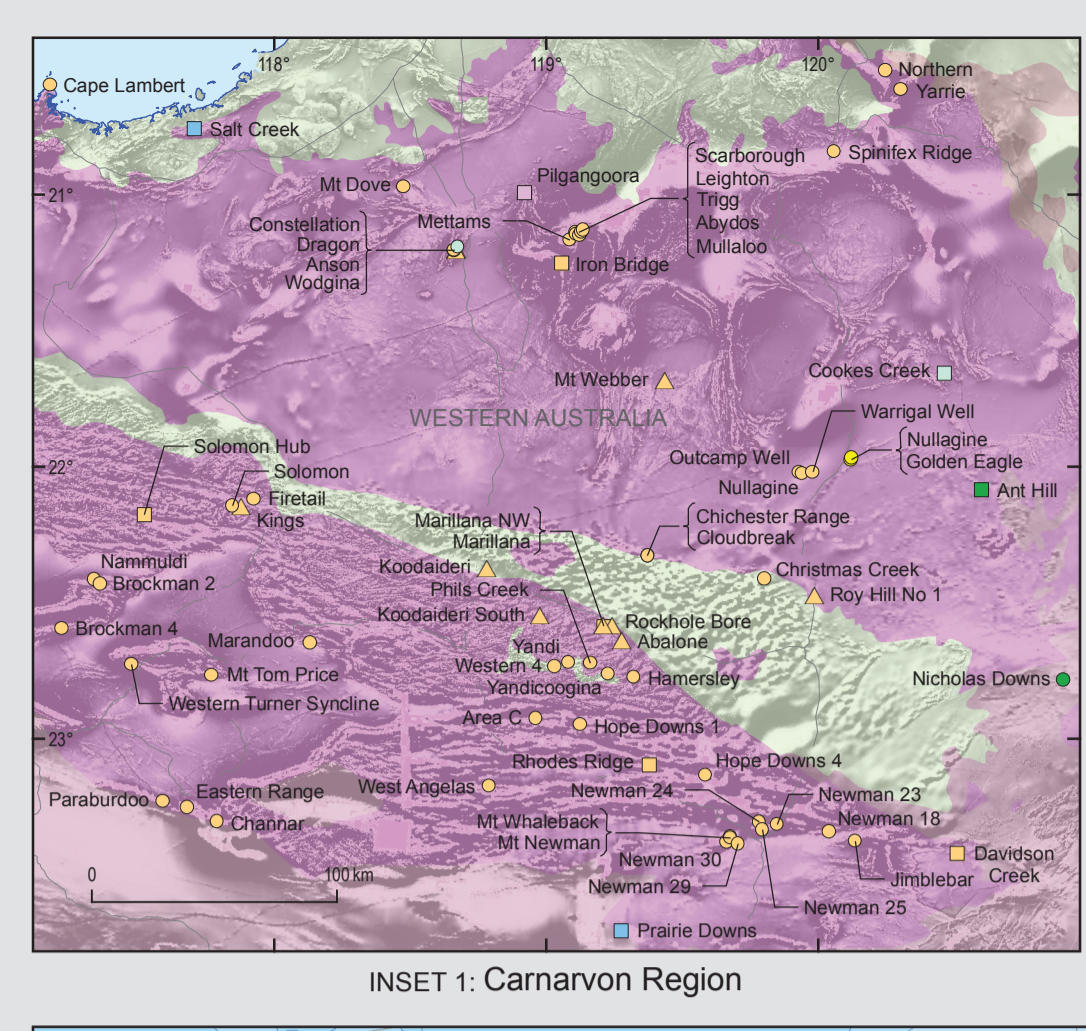
Published with permission of the CEO Geoscience Australia. Geoscience Australia acknowledges the assistance provided by State and Northern Territory geoscience agencies in the preparation of this map.

© Commonwealth of Australia (Geoscience Australia) 2014.
With the exception of the Commonwealth Coat of Arms and where otherwise noted, all material on this publication is provided under a Creative Commons Attribution 3.0 Australia Licence
<http://creativecommons.org/licenses/by/3.0/au/usedeu>

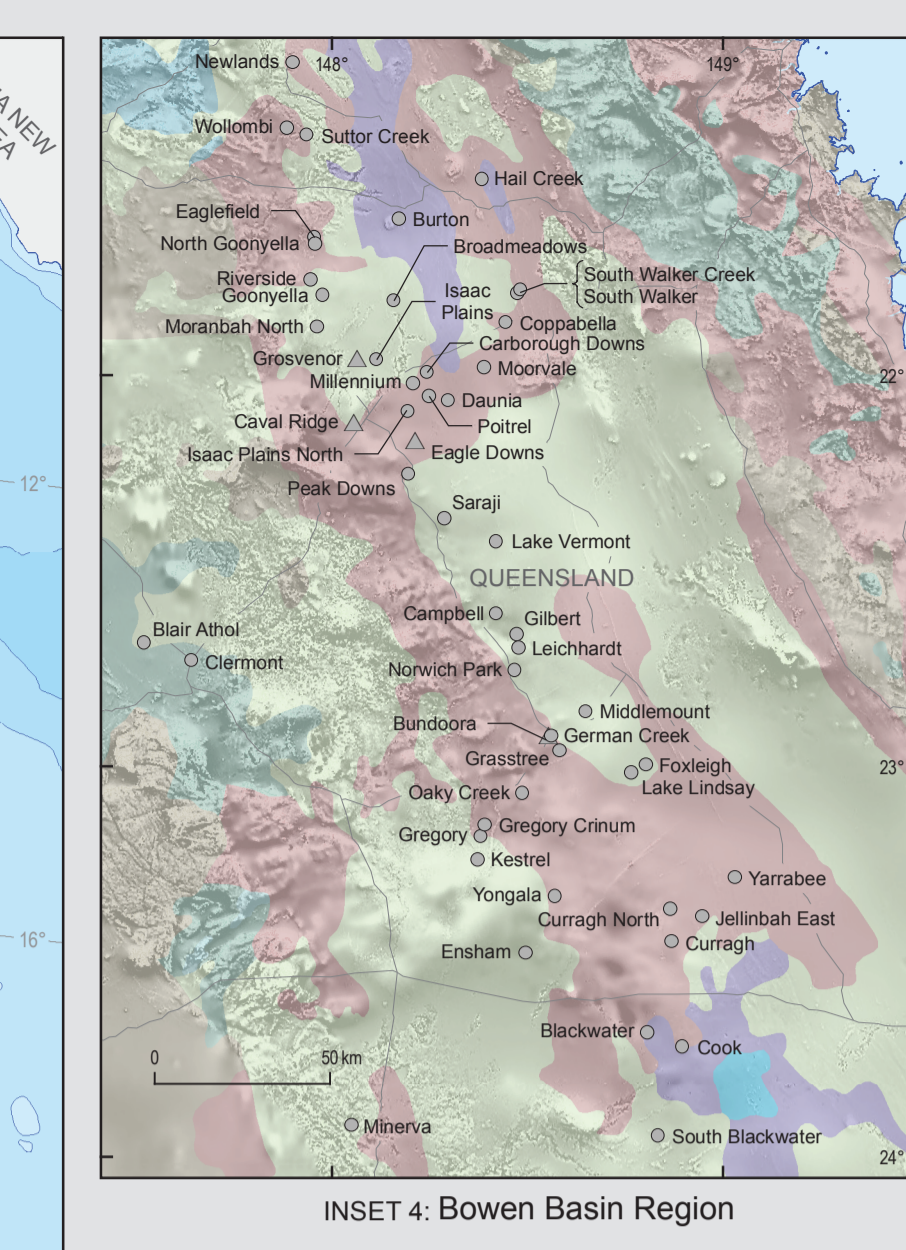
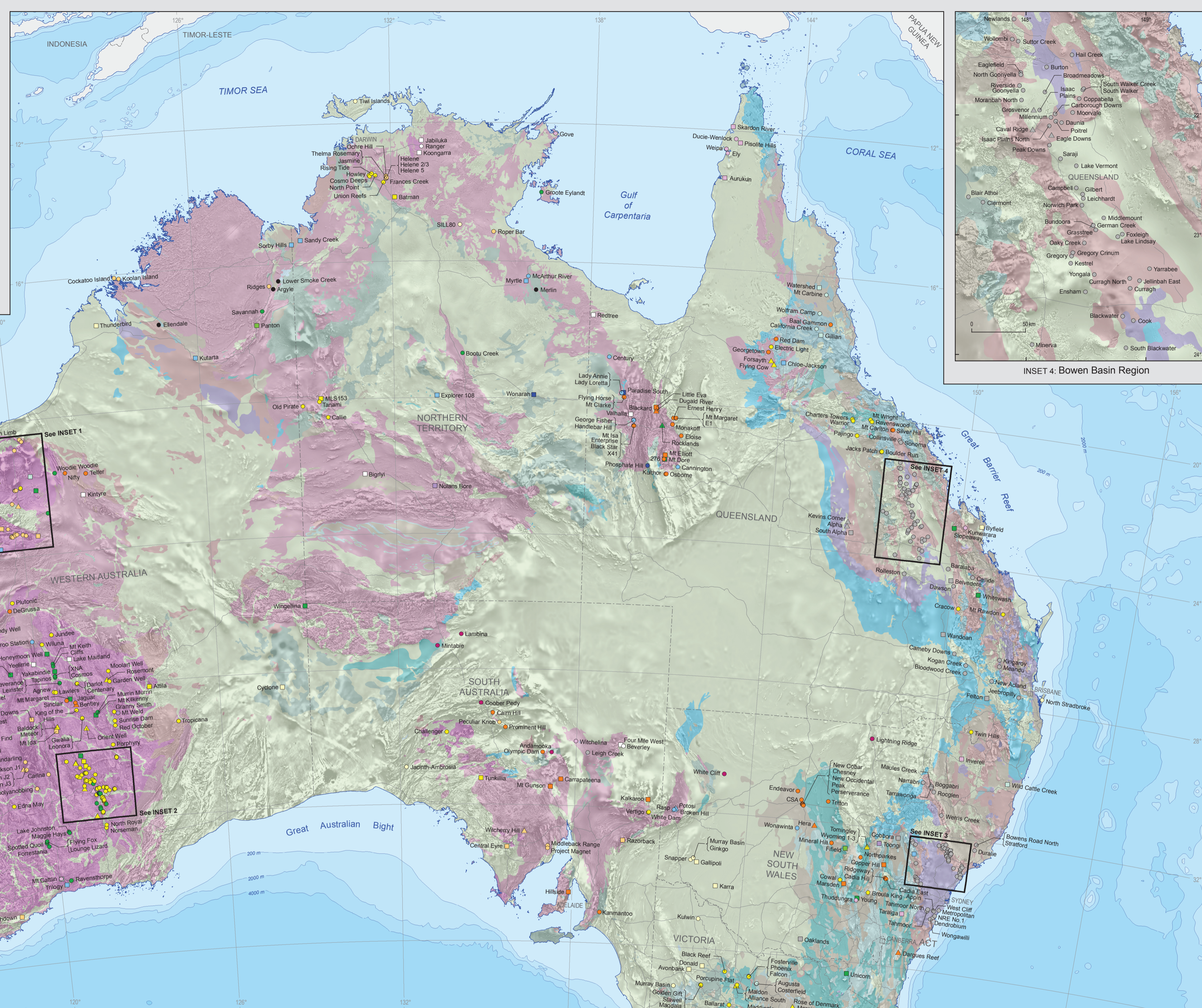
Copies of this map may be downloaded from the Geoscience Australia internet site at:
<http://www.ga.gov.au/76521>
or by contacting:
Sales Centre, Geoscience Australia
Cnr Hindmarsh Dr and Jerrabomberra Ave, Symonston, ACT 2609
GPO Box 378, Canberra, ACT 2601
Phone: (02) 6249 9966 Facsimile: (02) 6249 9960
Email: sales@ga.gov.au

AUSTRALIAN OPERATING MINES MAP
FEBRUARY 2014 (FOURTEENTH EDITION)

GeoCat No. 76621



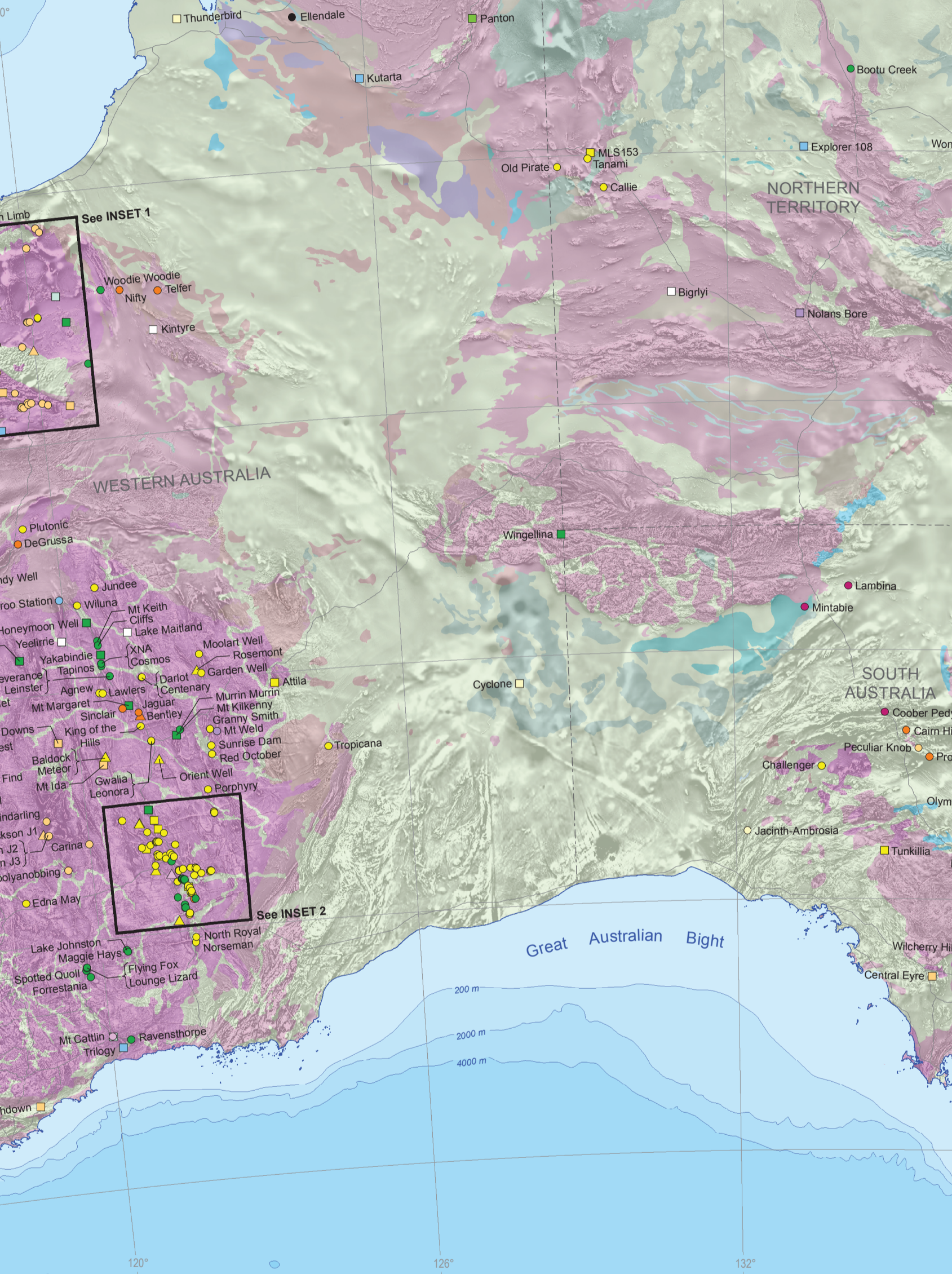
INSET 1: Carnarvon Region



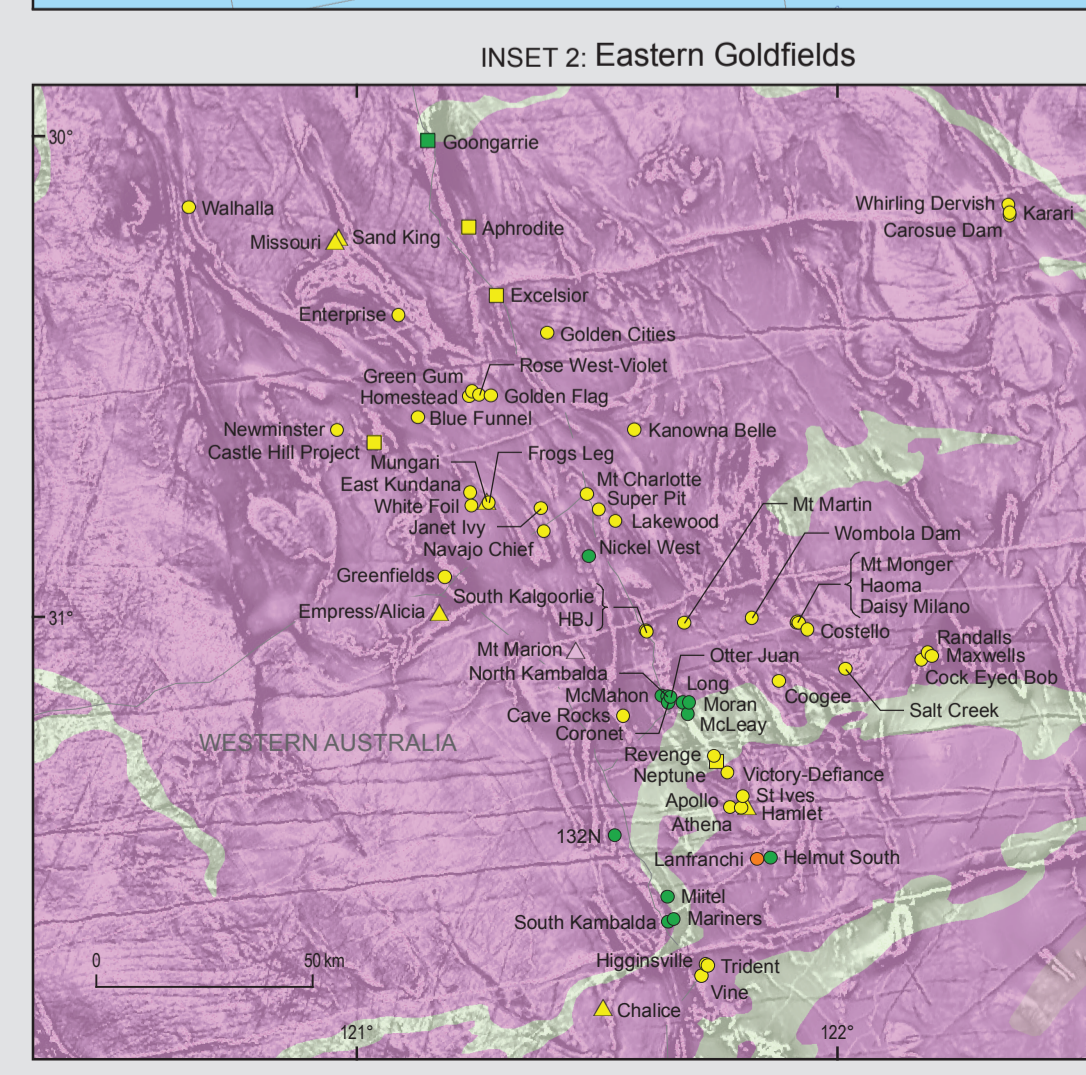
INSET 4: Bowen Basin Region



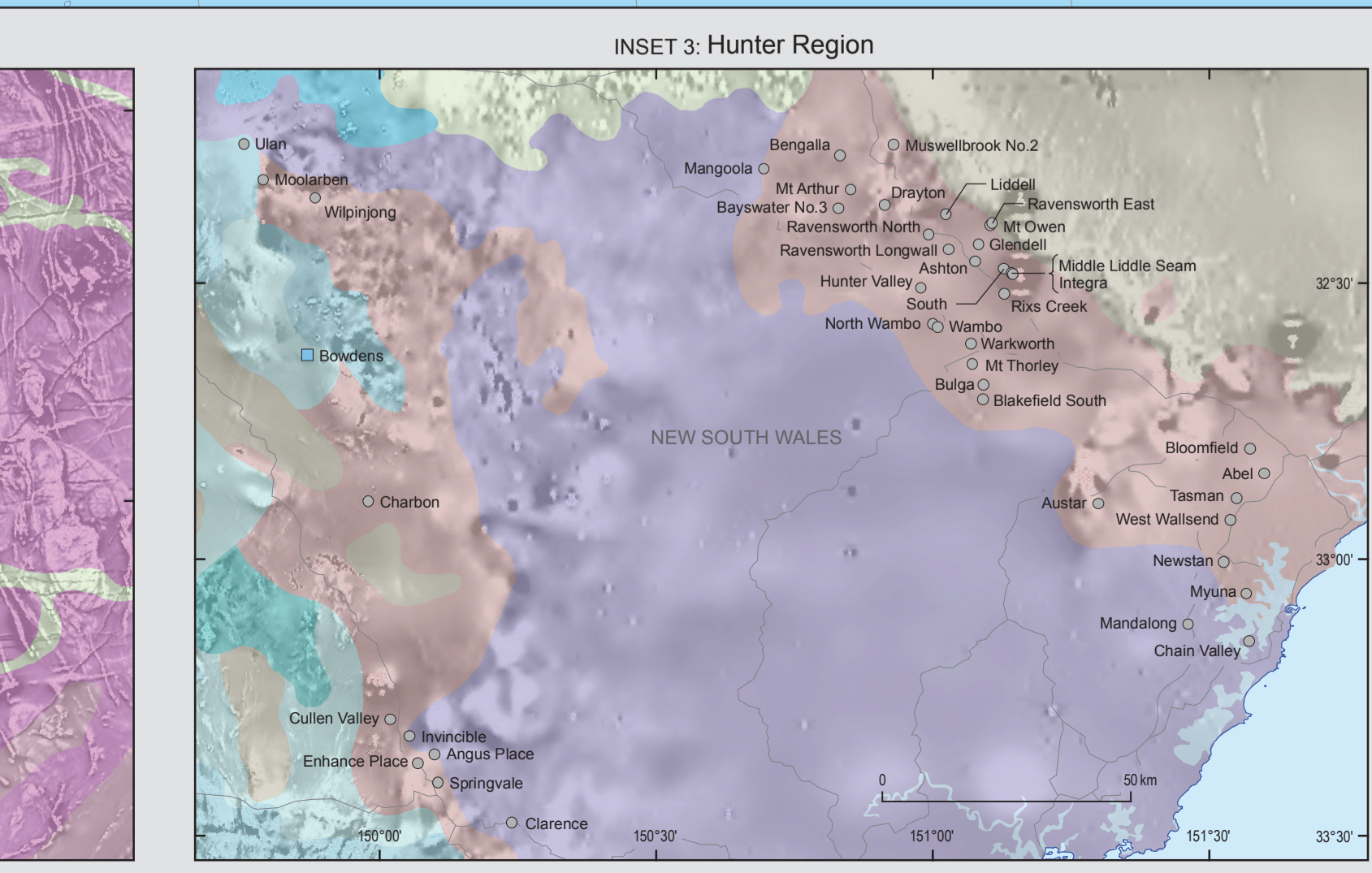
INSET 2: Eastern Goldfields



INSET 3: Hunter Region



WESTERN AUSTRALIA



NEW SOUTH WALES



TASMANIA