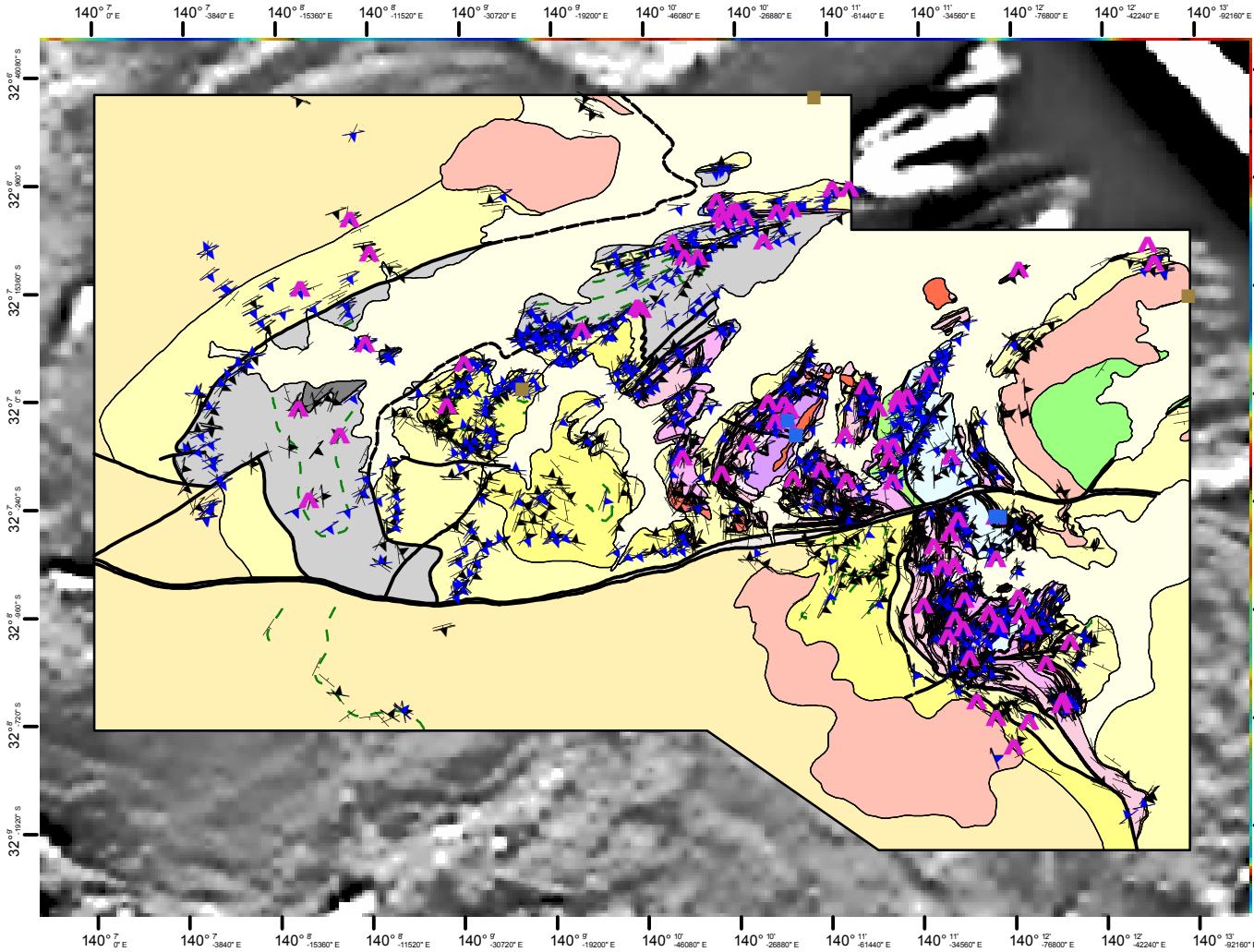


# Broken Hill Exploration Initiative

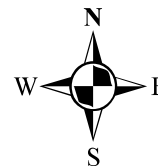
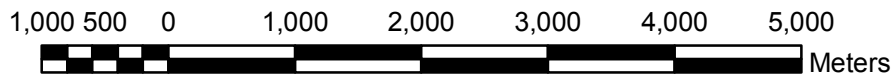


- |  |                     |  |                |
|--|---------------------|--|----------------|
|  | <b>Geochemistry</b> |  | <b>Geology</b> |
|  | <b>Petrology</b>    |  | Elq            |
|  | <b>Rb-Sr dates</b>  |  | Wps            |
|  | <b>S3</b>           |  | Wqa            |
|  | <b>S2</b>           |  | Cz             |
|  | <b>S0</b>           |  | Pgs            |
|  |                     |  | Wms            |
|  |                     |  | M              |
|  |                     |  | Spm            |
|  |                     |  | Sps            |
|  |                     |  | Bfcs           |
|  |                     |  | v              |
|  |                     |  | Eups           |
|  |                     |  | Ecax           |
|  |                     |  | Ecs            |
|  |                     |  | Eps            |
|  |                     |  | q              |
|  |                     |  | Gpt            |
|  |                     |  | Wgn            |
|  |                     |  | Eca            |
|  |                     |  | Wmm            |
|  |                     |  | Rs             |
|  |                     |  | Tgs            |
|  |                     |  | Tps            |
- 
- |                      |  |   |
|----------------------|--|---|
| <b>Geology lines</b> |  | <b>Fault, accurate.</b>                                 |
|                      |  | <b>Fault, approximate.</b>                              |
|                      |  | <b>Fault, inferred.</b>                                 |
|                      |  | <b>Geological boundary, accurate.</b>                   |
|                      |  | <b>Geological boundary, approximate.</b>                |
|                      |  | <b>Geological boundary, inferred.</b>                   |
|                      |  | <b>Thrust fault, accurate. Triangle on older rocks.</b> |
|                      |  | <b>Tile frame - not plotted.</b>                        |
|                      |  | <b>Geological Trends</b>                                |

© Commonwealth of Australia 2007

This work is copyright. Apart from any fair dealings for the purposes of study, research, criticism or review, as permitted under the Copyright Act 1968, no part may be reproduced by any process without written permission. Copyright is the responsibility of the Chief Executive Officer, Geoscience Australia. Requests and enquiries should be directed to **The Chief Executive Officer, Geoscience Australia, GPO Box 378 Canberra ACT 2601**

Geoscience Australia has tried to make the information in this product as accurate as possible. However, it does not guarantee that the information is totally accurate or complete. **THEREFORE YOU SHOULD NOT RELY SOLELY ON THIS INFORMATION WHEN MAKING A COMMERCIAL DECISION**



More information and data are available from <http://www.ga.gov.au/minerals/research/archive/bhei/bhei.jsp>