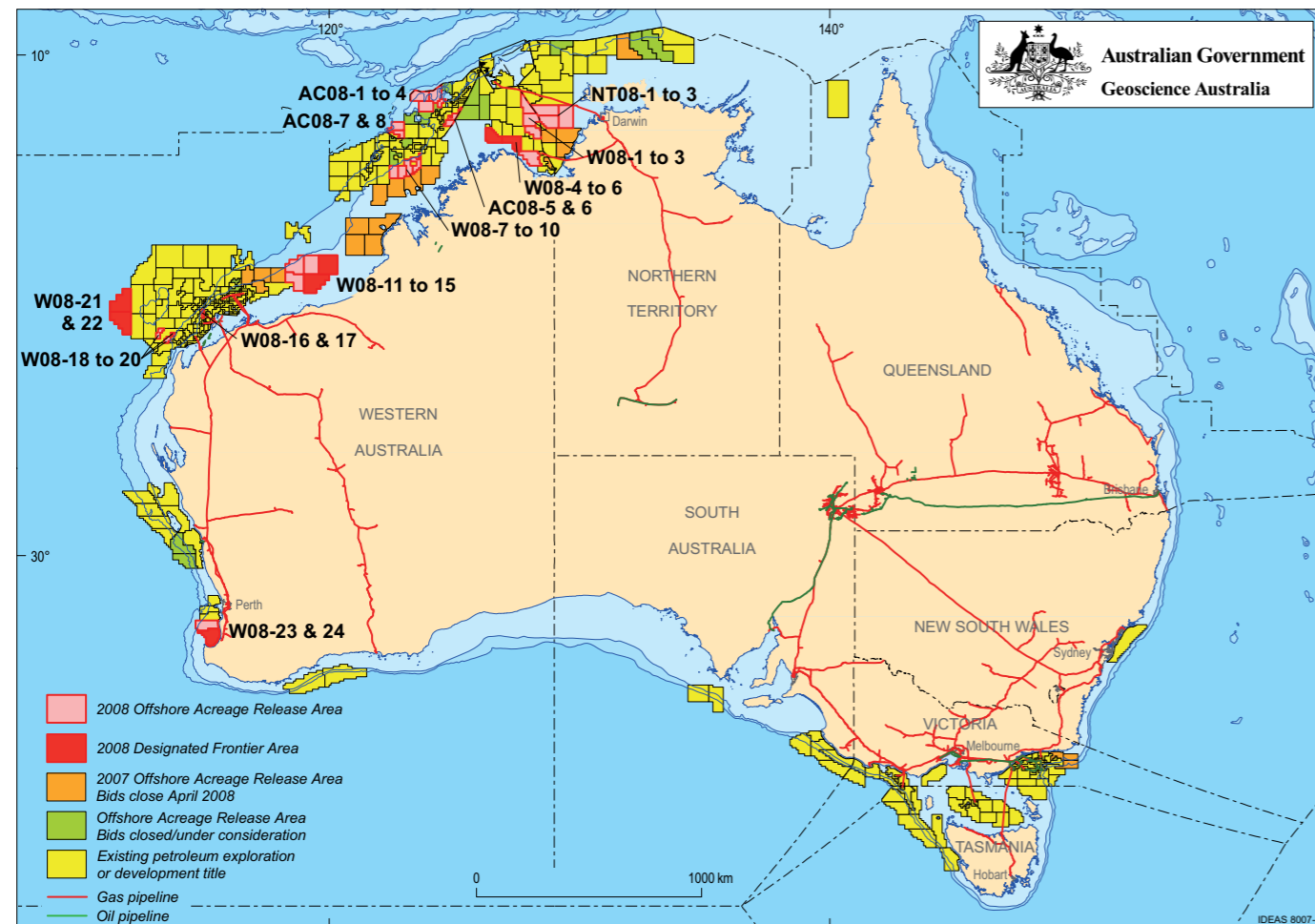


2008 Release of Offshore Petroleum Exploration Areas

The 2008 Offshore Petroleum Exploration Acreage release comprises 35 Release areas, located across five basins. The Release areas range from frontier to mature status and offer opportunities for exploration companies of all sizes.

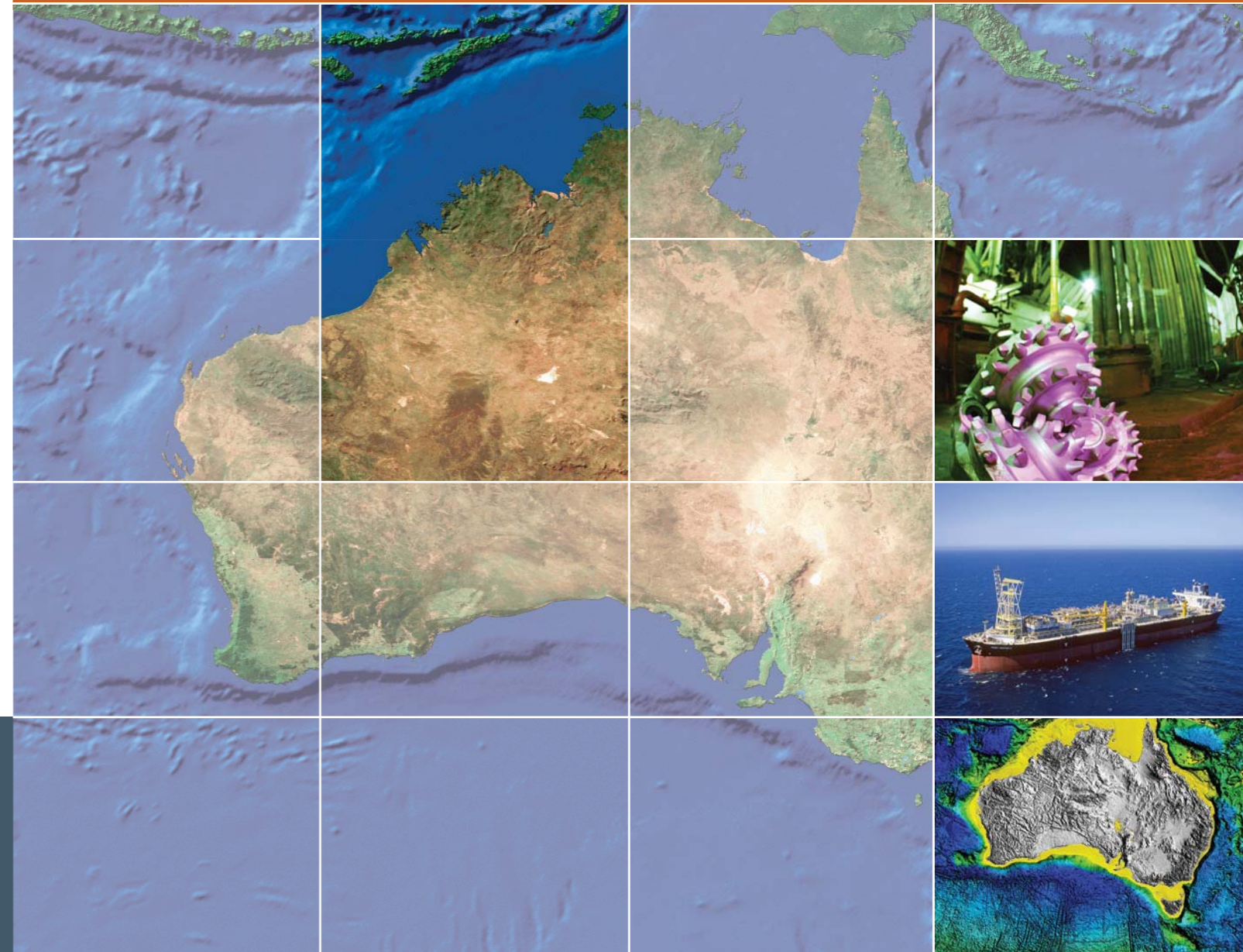
Comprehensive acreage release information packs can be obtained (free of charge) by emailing contact details to: petroleum.exploration@ret.gov.au



EXPLORE AUSTRALIA

ASHMORE PLATFORM, BONAPARTE BASIN TERRITORY OF ASHMORE AND CARTIER ISLANDS

Release areas AC08-1, AC08-2 and AC08-3



FOR MORE INFORMATION CONTACT:

Mr Bob Pegler
General Manager
Offshore Resources Branch
Resources Division
Department of Resources, Energy and Tourism
GPO Box 1564, CANBERRA ACT 2601
AUSTRALIA
Telephone: +61 2 6213 7928
Facsimile: +61 2 6213 7955
E-mail: petroleum.exploration@ret.gov.au
Internet: www.ret.gov.au/petexp

FOR GEOSCIENTIFIC ENQUIRIES CONTACT:

Dr Clinton Foster
Chief of Division
Petroleum & Marine Division
Geoscience Australia
GPO Box 378, CANBERRA ACT 2601
AUSTRALIA
Telephone: +61 2 6249 9447
Facsimile: +61 2 6249 9933
E-mail: Clinton.Foster@ga.gov.au
Internet: www.ga.gov.au

BIDS CLOSE 9 OCTOBER 2008



Australian Government
Geoscience Australia

Current Exploration Opportunities in the Ashmore Platform, Bonaparte Basin Territory Of Ashmore And Cartier Islands, Offshore Australia. Open for bids until 9 October 2008

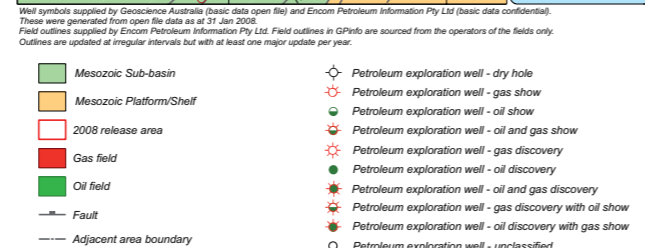
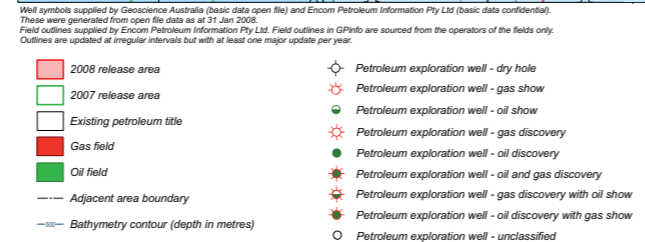
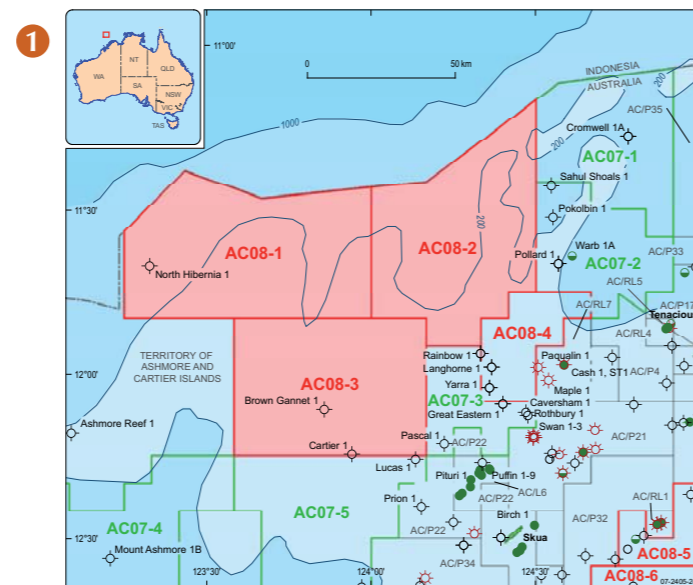
Release areas AC08-1, AC08-2 and AC08-3

- Shallow water frontier area adjacent to oil-producing province
- Good quality Triassic sandstone reservoirs; excellent quality Late Cretaceous sandstones in south-eastern area
- Numerous Triassic horst blocks
- Potential Early Cretaceous reefal mounds and Miocene patch reefs
- Untested source potential of small Late Jurassic half graben
- Source rock potential in Triassic-Permian section
- Special Notices apply, refer to Guidance Notes

Geoscience Australia Reports/Products

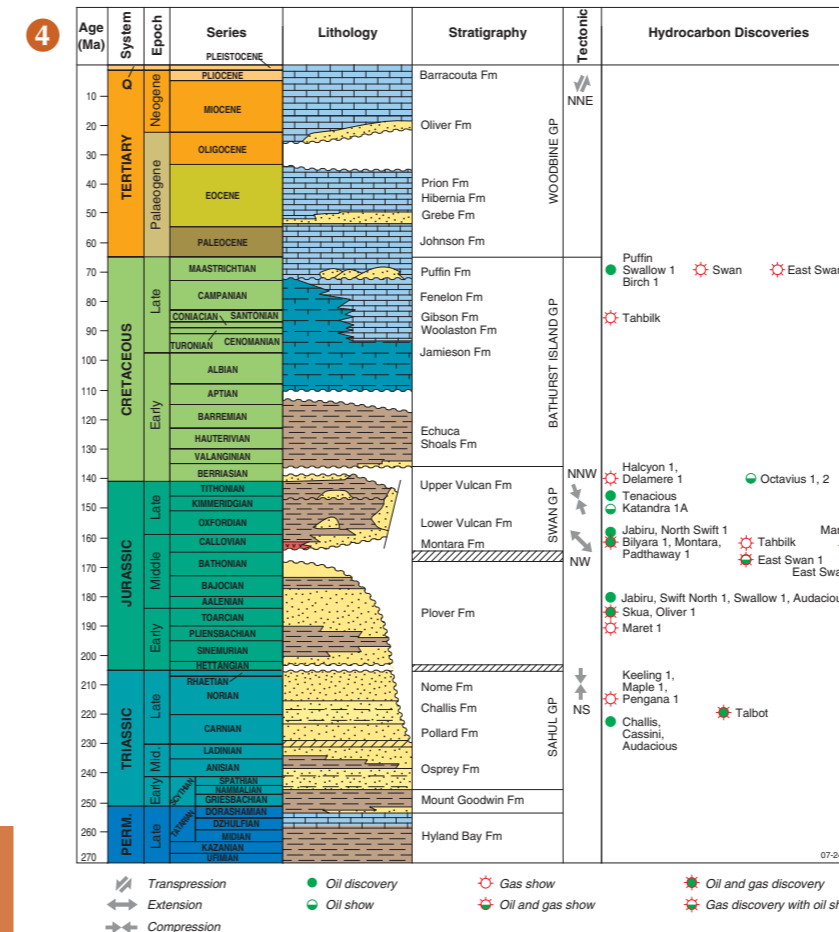
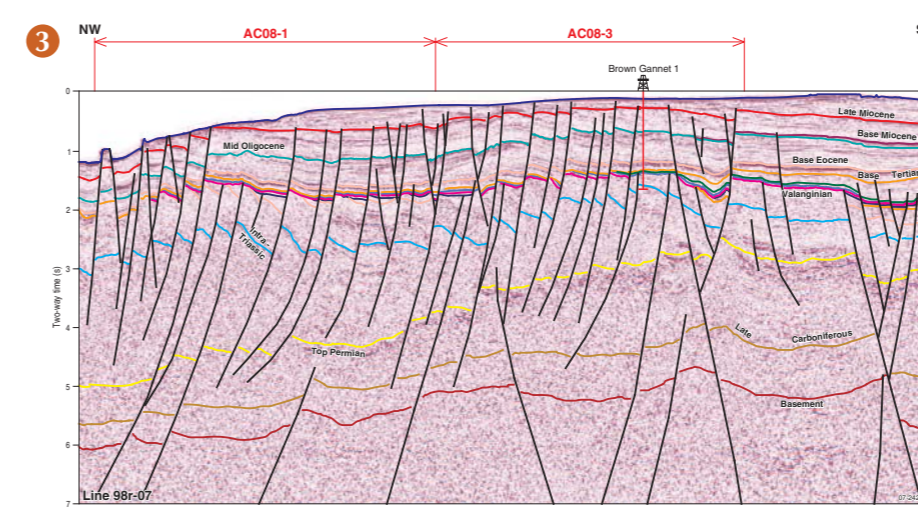
- Oils of Western Australia II: Regional petroleum geochemistry and correlation of crude oils and condensates from Western Australia and Papua New Guinea. Geoscience Australia and GeoMark Research. (2005)
- Source rock time-slice maps (TOC, HI, VR), offshore northwest Australia —1:3,000,000 scale. (2004) GeoCat # 61179
- Northwestern and northern Australia margins stratigraphic chart showing Geoscience Australia's interpreted regional seismic horizons. (2001). GeoCat # 36454
- Line drawings of Geoscience Australia's regional seismic profiles, offshore northern and northwestern Australia. (2001) GeoCat # 36353
- Interpretations of Geoscience Australia's regional seismic data, survey 98, 100, 116, 118, 119 and 130, (2001) — digital horizon and fault data in ASCII format. (2001) GeoCat # 35237, 35239, 35249, 35243, 35244, 35248 respectively
- Characterisation of natural gases from West Australian Basins: Bonaparte Basin module. AGSO and Geotechnical Services Non-exclusive Study. (2000)
- Vulcan Sub-basin geohistory modelling CD. (1999) AGSO Record 1999/040. GeoCat # 31483
- Vulcan Sub-basin composite well folio CD. (1999) GeoCat # 25307
- Bonaparte Basin biozonation and stratigraphy chart 32. (2008). GeoCat # 65649
- Northern Bonaparte biozonation and stratigraphy chart 15. (1998) GeoCat #24222
- Vulcan Tertiary Tie (VTT) basin study, Vulcan Sub-basin, Timor Sea, northwestern Australia. (1996) AGSO Record 1996/061. GeoCat # 25189.

Contact Geoscience Australia's Sales Centre for more information or to order these reports or products, phone 61 (0)2 6249 9966, email sales@ga.gov.au



Relevant Industry Data

- Australian North West Shelf Digital Atlas, www.nwsda.com



1. Location of Release areas AC08-1, AC08-2 and AC08-3, Ashmore Platform.
2. Regional structural setting of the Ashmore Platform and Vulcan Sub-basin, Bonaparte Basin (modified after Edwards et al, 2004). Location of seismic line GA98r-07 shown in Figure 3.
3. Seismic line GA98r-07 across the central Ashmore Platform (location of the line shown in Figure 2).
4. Stratigraphy of the Ashmore Platform and Vulcan Sub-basin (after Edwards et al, 2004).

ASHMORE PLATFORM PETROLEUM PLAY ELEMENTS

Source	Late Jurassic sections in the Swan and Paqualin grabens and Cartier Trough. Potential Permo-Triassic section across the platform. Late Jurassic syn-rift section in local half-grabens on the outer platform.
Reservoir	Good quality Triassic and Late Cretaceous sandstone reservoirs. Potential Eocene to Miocene carbonates and sandstones.
Seal	Early Cretaceous claystones above the Jurassic-Early Cretaceous unconformity.
Traps	Triassic horsts, anticlinoria, Late Cretaceous fans and potential reefs (Early Cretaceous and Miocene).
Infrastructure and Markets	Nearby Puffin oil field in final development stages.