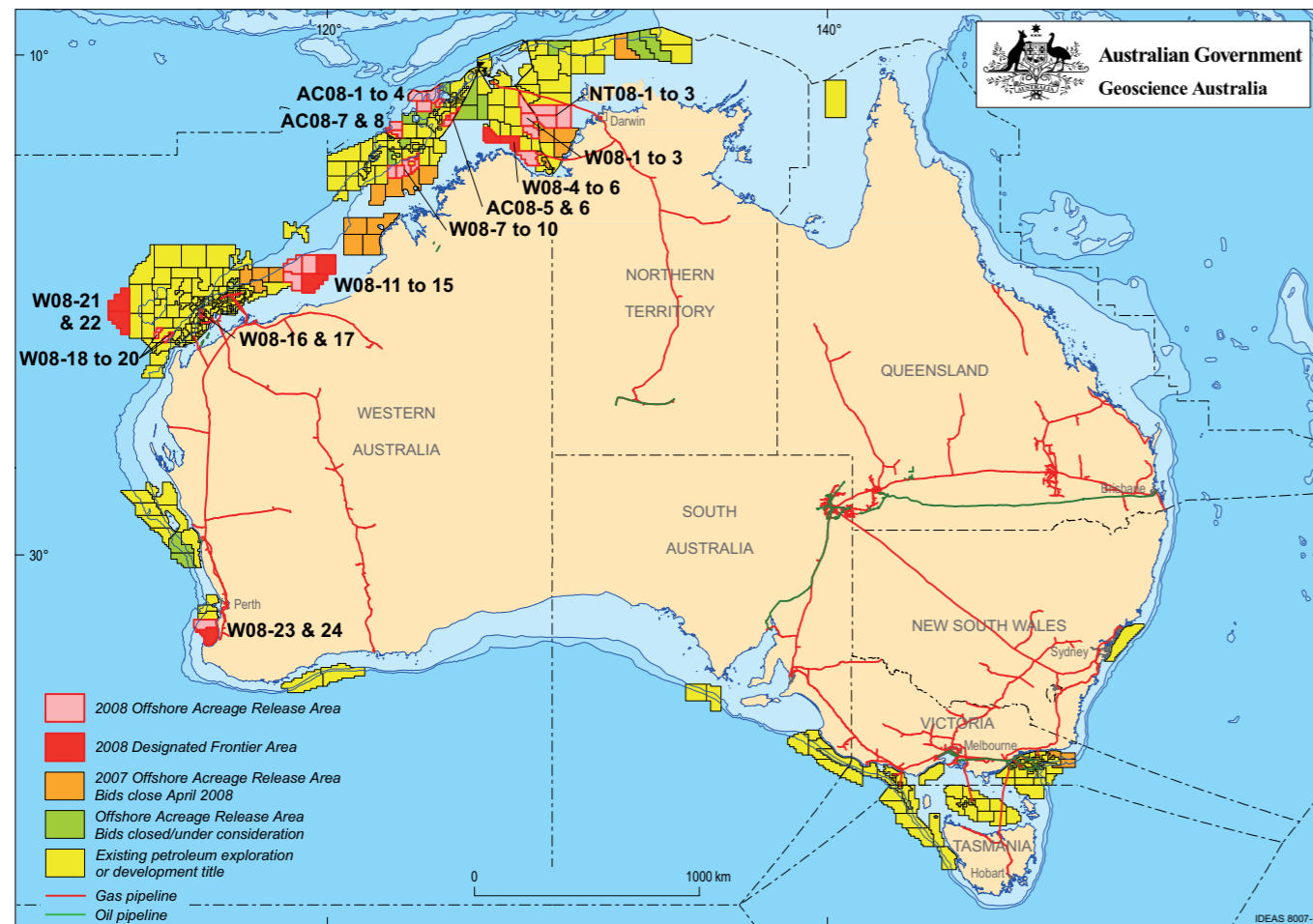


2008 Release of Offshore Petroleum Exploration Areas

The 2008 Offshore Petroleum Exploration Acreage release comprises 35 Release areas, located across five basins. The Release areas range from frontier to mature status and offer opportunities for exploration companies of all sizes.

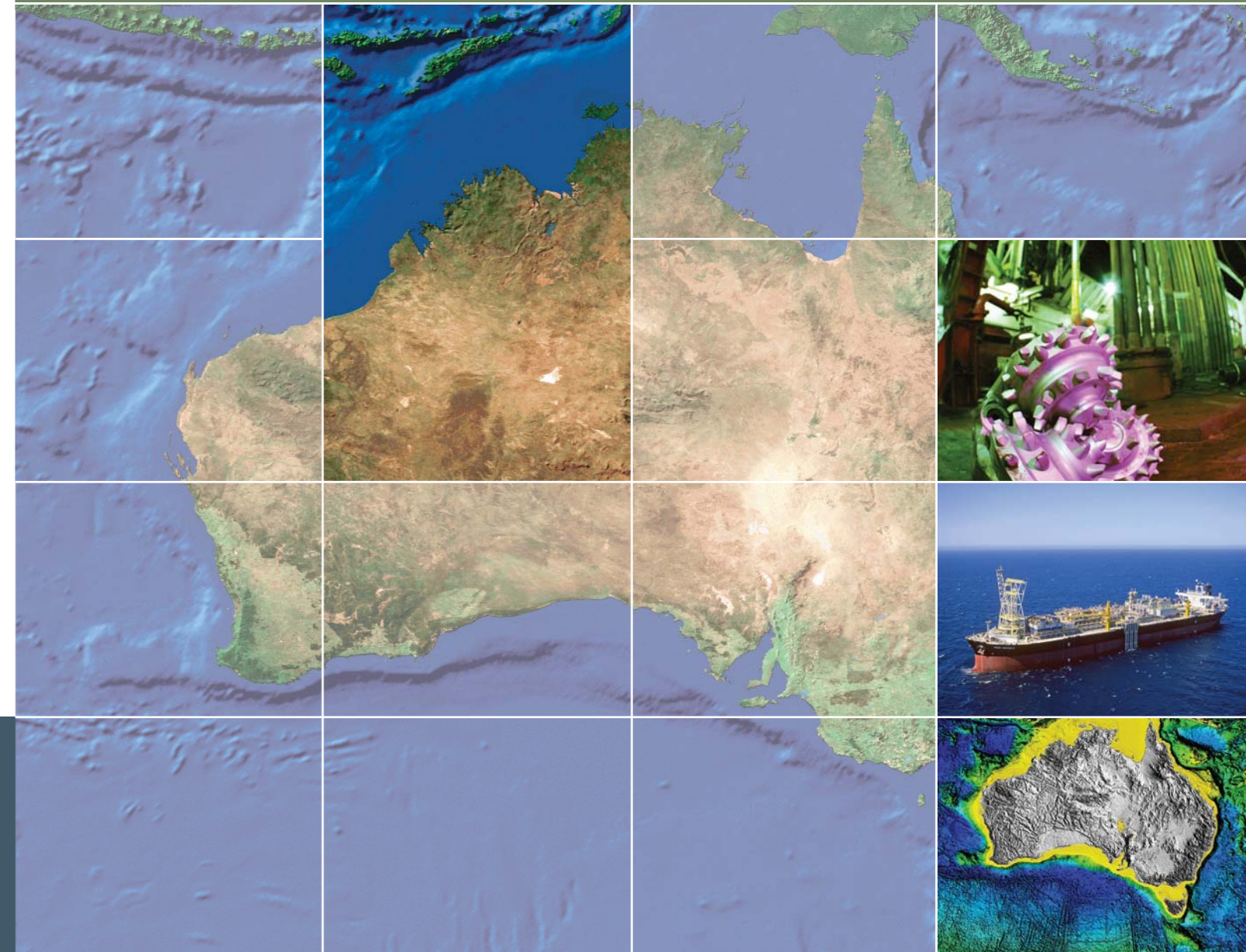
Comprehensive acreage release information packs can be obtained (free of charge) by emailing contact details to: petroleum.exploration@ret.gov.au



EXPLORE AUSTRALIA

CASWELL SUB-BASIN, BROWSE BASIN WESTERN AUSTRALIA

Release areas W08-7, W08-8, W08-9 and W08-10



FOR MORE INFORMATION CONTACT:

Mr Bob Pegler
General Manager
Offshore Resources Branch
Resources Division
Department of Resources, Energy and Tourism
GPO Box 1564, CANBERRA ACT 2601
AUSTRALIA
Telephone: +61 2 6213 7928
Facsimile: +61 2 6213 7955
E-mail: petroleum.exploration@ret.gov.au
Internet: www.ret.gov.au/petexp

FOR GEOSCIENTIFIC ENQUIRIES CONTACT:

Dr Clinton Foster
Chief of Division
Petroleum & Marine Division
Geoscience Australia
GPO Box 378, CANBERRA ACT 2601
AUSTRALIA
Telephone: +61 2 6249 9447
Facsimile: +61 2 6249 9933
E-mail: Clinton.Foster@ga.gov.au
Internet: www.ga.gov.au

BIDS CLOSE 9 OCTOBER 2008



Australian Government
Geoscience Australia

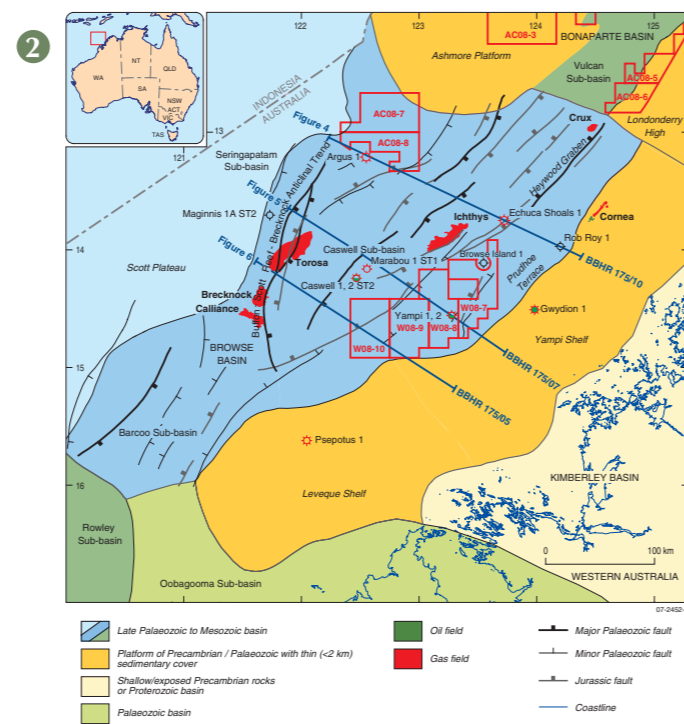
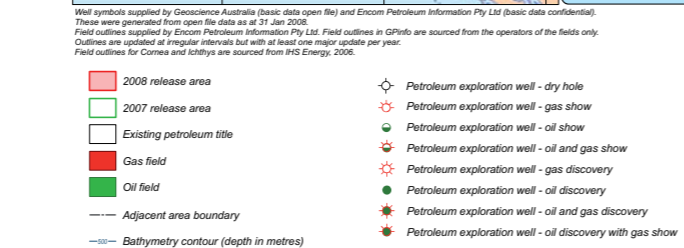
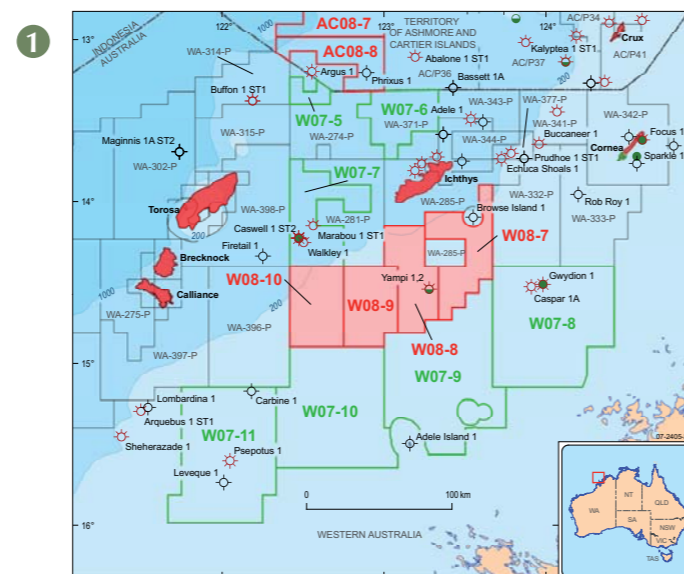
Current Exploration Opportunities in the Caswell Sub-basin, Browse Basin, Western Australia Offshore Australia. Open for bids until 9 October 2008

Release areas W08-7, W08-8, W08-9 and W08-10

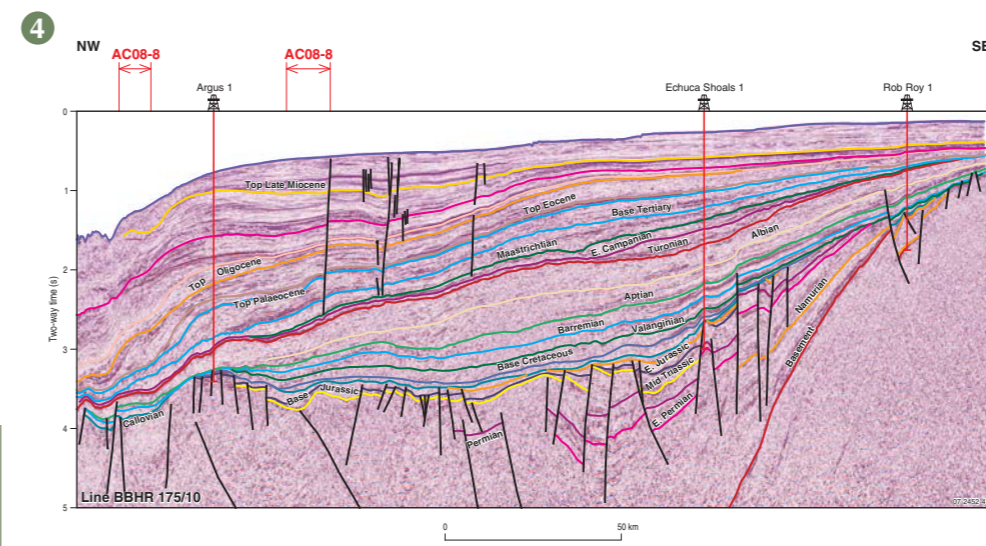
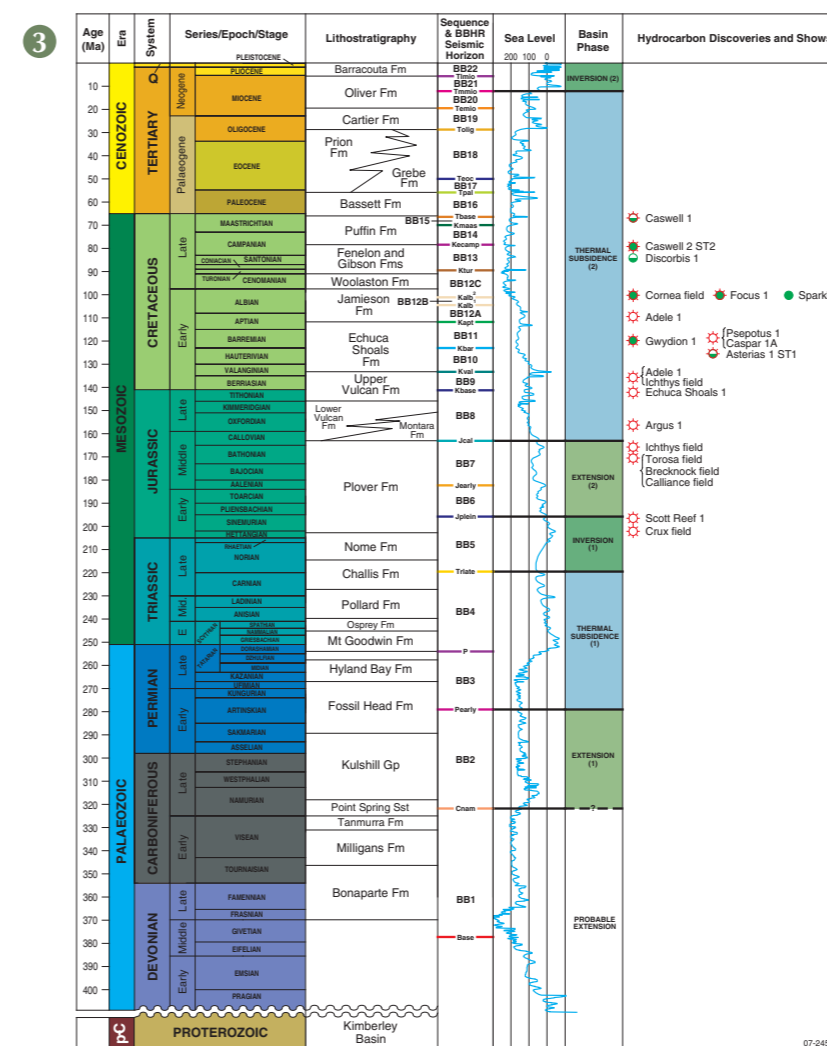
- Under-explored areas adjacent to giant Ichthys gas accumulation where aggressive appraisal drilling programs are underway
- Rich Early–Middle Jurassic (Plover Formation) and Early Cretaceous (Vulcan and Echuca Shoals formations) source rocks
- Excellent reservoir and seal facies demonstrated.
- Proven structural and stratigraphic plays
- Water depths between 70 and 300 m
- Special Notices apply, refer to Guidance Notes.

Geoscience Australia Reports/Products

- Browse Basin composite well logs. (2005) GeoCat # 61819
- Geoscience Australia survey 267 post survey report - testing natural hydrocarbon seepage detection tools on the Yampi Shelf, nw005) GeoCat # 61717
- Oils of Western Australia II: Regional petroleum geochemistry and correlation of crude oils and condensates from Western Australia and Papua New Guinea. (2005) Geoscience Australia and GeoMark Research.
- Source rock time-slice maps (TOC, HI, VR), offshore northwest Australia —1:3,000,000 scale. (2004) GeoCat # 61179
- Browse Basin biozonation and stratigraphy chart 7, 2001. GeoCat # 36593
- Interpretations of Geoscience Australia's regional deep-seismic data, survey 119 and 130, (2001) — digital horizon and fault data in ASCII format. (2001) GeoCat # 35244, 35248
- Hydrocarbon migration and seepage in the Timor Sea and Northern Browse Basin, North West Shelf, Australia, (2001). An integrated SAR, geological and geochemical study; GIS (ArcView) format. (2001)
- Characterisation of natural gases from West Australian basins: Browse Basin module. (2000) AGSO and Geotechnical Services non-exclusive study
- Browse Basin organic geochemistry study North West Shelf, Australia. (1997) AGSO Record 1997/057
- Browse Basin high-resolution seismic survey BBHR-175, and interpretation report. (1997) AGSO Record 1997/038.



Contact Geoscience Australia's Sales Centre for more information or to order these reports or products, phone 61 (0)2 6249 9966, e-mail sales@ga.gov.au



CASWELL SUB-BASIN PETROLEUM PLAY ELEMENTS	
Source	Early to Middle Jurassic Plover Formation, Late Jurassic Lower Vulcan Formation, Early Cretaceous Echuca Shoals and Jamieson Formations.
Reservoir	Early to Middle Jurassic Plover Formation, Late Jurassic to Late Cretaceous submarine fans and turbidites.
Seal	Late Jurassic to Early Cretaceous Vulcan Formation and Early Cretaceous Echuca Shoals Formation (regional seals). Early to Middle Jurassic Plover Formation and Late Cretaceous Puffin Formation.
Traps	Faulted anticlines, horsts/tilted fault blocks, drape anticlines and stratigraphic traps.
Infrastructure and Markets	Likely region for future gas development, with development plans for the Brewster / Ichthys field and appraisal drilling of Calliance and Torosa fields.

1. Location map of Release areas W08-7 to W08-10 in the Browse basin showing existing petroleum title areas, petroleum accumulations and significant wells.
2. Regional setting of the Browse Basin (after Struckmeyer et al, 1998), showing the location of seismic lines BBHR 175/05, BBHR 175/07 and BBHR 175/10. (Figure 4).
3. Tectonostratigraphic summary and hydrocarbon discoveries for the Browse Basin (after Blevin et al, 1998a; Struckmeyer et al, 1998).
4. Seismic line BBHR 175/10 through Argus 1, Echuca Shoals 1 and Rob Roy 1, northern Caswell Sub-basin. Location of the line is shown in Figure 2. Regional seismic horizons are shown in Figure 3.