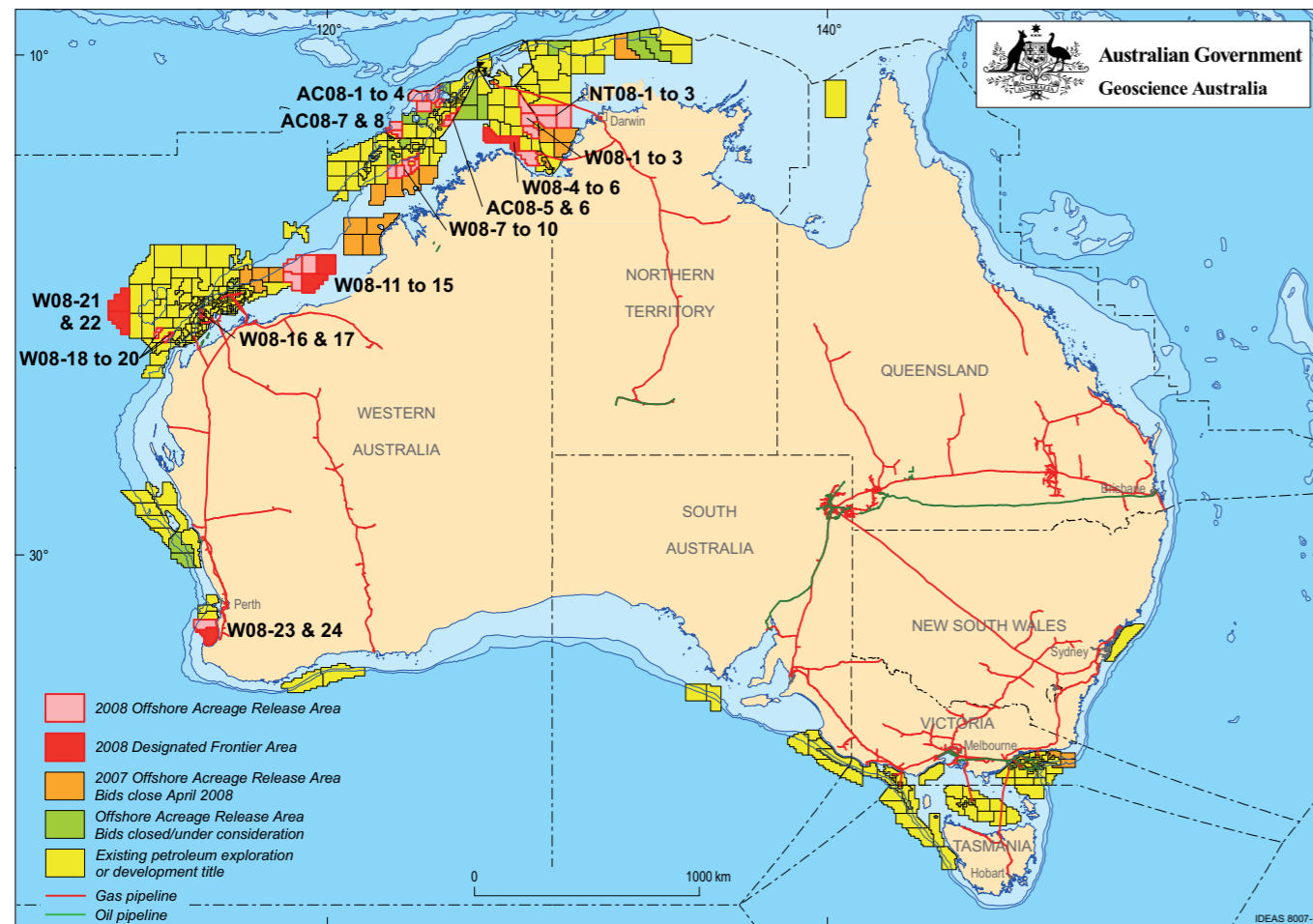


2008 Release of Offshore Petroleum Exploration Areas

The 2008 Offshore Petroleum Exploration Acreage release comprises 35 Release areas, located across five basins. The Release areas range from frontier to mature status and offer opportunities for exploration companies of all sizes.

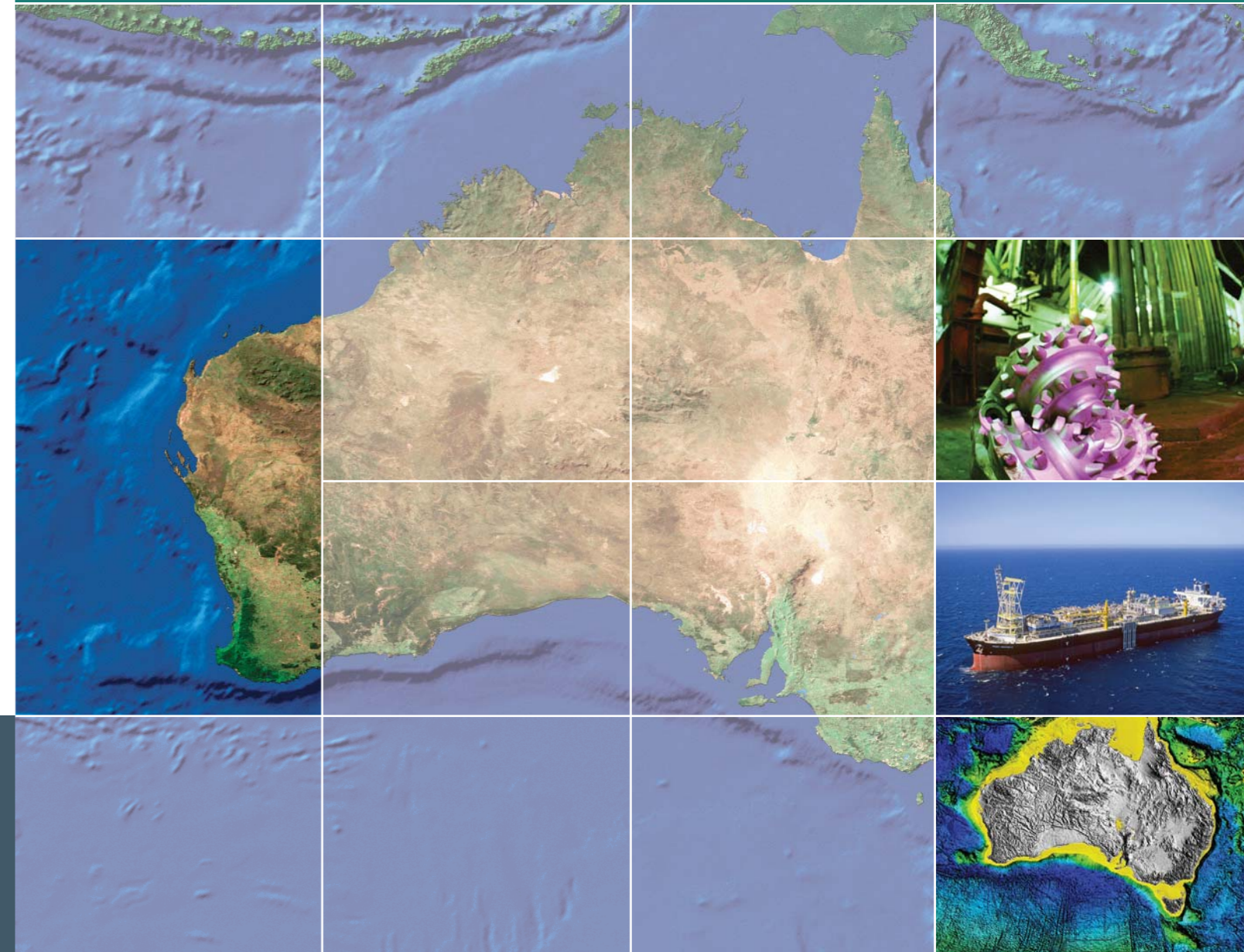
Comprehensive acreage release information packs can be obtained (free of charge) by emailing contact details to: petroleum.exploration@ret.gov.au



EXPLORE AUSTRALIA

EXMOUTH SUB-BASIN, CARNARVON BASIN WESTERN AUSTRALIA

Release areas W08-18, W08-19 and W08-20



FOR MORE INFORMATION CONTACT:

Mr Bob Pegler
General Manager
Offshore Resources Branch
Resources Division
Department of Resources, Energy and Tourism
GPO Box 1564, CANBERRA ACT 2601
AUSTRALIA
Telephone: +61 2 6213 7928
Facsimile: +61 2 6213 7955
E-mail: petroleum.exploration@ret.gov.au
Internet: www.ret.gov.au/petexp

FOR GEOSCIENTIFIC ENQUIRIES CONTACT:

Dr Clinton Foster
Chief of Division
Petroleum & Marine Division
Geoscience Australia
GPO Box 378, CANBERRA ACT 2601
AUSTRALIA
Telephone: +61 2 6249 9447
Facsimile: +61 2 6249 9933
E-mail: Clinton.Foster@ga.gov.au
Internet: www.ga.gov.au

BIDS CLOSE 9 OCTOBER 2008



Australian Government
Geoscience Australia

Current Exploration Opportunities in the Exmouth Sub-basin, Carnarvon Basin, Western Australia Offshore Australia. Open for bids until 9 October 2008

Release areas W08-18, W08-19 and W08-20

- Adjacent to Australia's major new oil producing province
- Barrow Group and Triassic fault block plays
- W08-20 and W08-19 near to recently discovered oil and gas fields
- Special Notices apply, refer to Guidance Notes.

Geoscience Australia Reports/Products New Reports/Products

- Seismic transects of Australia's frontier continental margins. (2006) GA Record 2006/004.

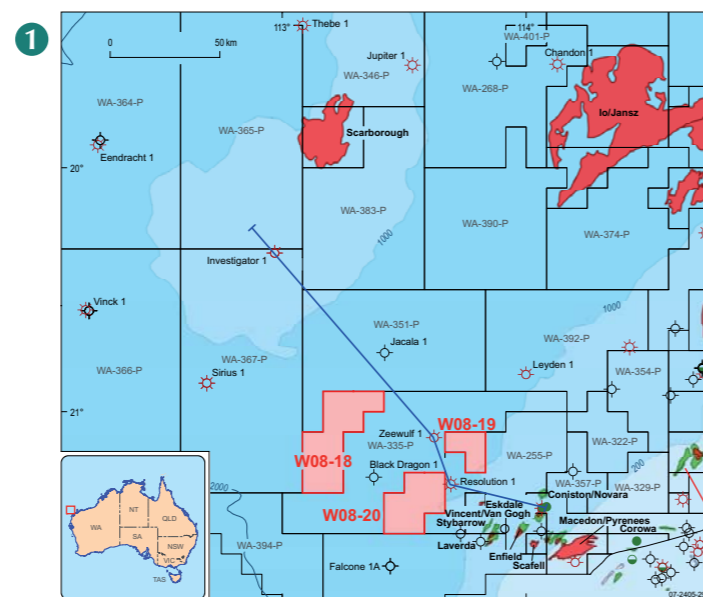
Other Reports/Products

- Triassic biostratigraphic study of greater Exmouth Plateau, synthesis report. (2006) Geoscience Australia Repository destructive analysis report 1297 unpublished
- Oils of Western Australia II: Regional petroleum geochemistry and correlation of crude oils and condensates from Western Australia and Papua New Guinea. (2005) Geoscience Australia and GeoMark Research
- Geological framework of the outer Exmouth Plateau and adjacent ocean basins. (2004) GA Record 2004/13
- Geological framework of the Wallaby Plateau and adjacent areas. (2002) GA Record 2002/21.

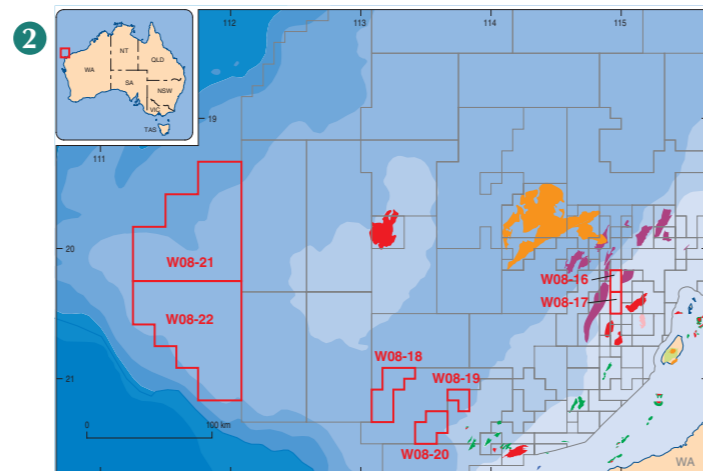
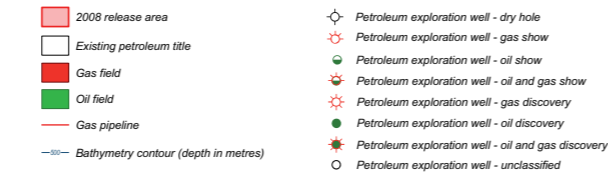
Contact Geoscience Australia's Sales Centre for more information or to order these reports or products, phone 61 (0)2 6249 9966, e-mail sales@ga.gov.au

Relevant Industry Data

- Australian North West Shelf Digital Atlas, www.nwsda.com

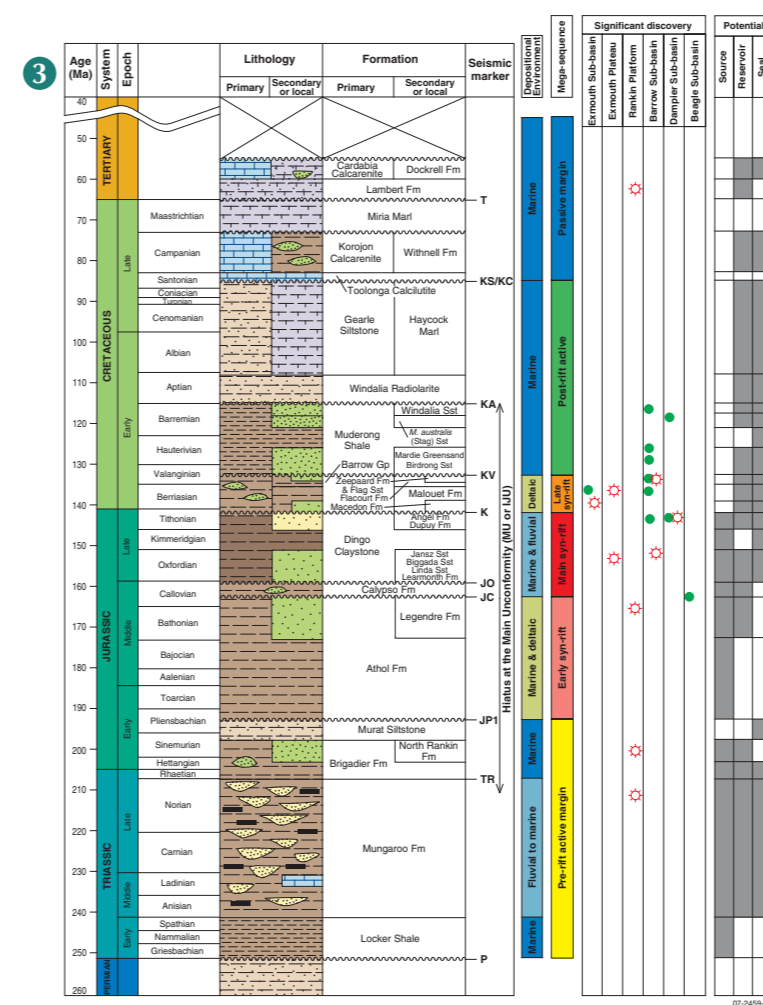


Well symbols supplied by Geoscience Australia (basic data open file) and Encorn Petroleum Information Pty Ltd (basic data confidential). These were generated from open file data as at 31 Jan 2008. Field outlines supplied by Encorn Petroleum Information Pty Ltd. Field outlines in GPRinfo are sourced from the operators of the fields only. Outlines are updated at irregular intervals but with at least one major update per year.

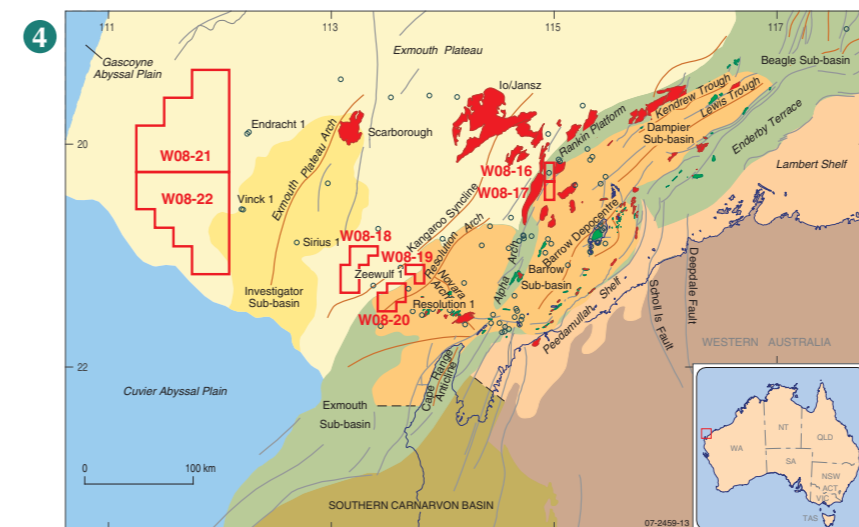


Field outlines supplied by Encorn Petroleum Information Pty Ltd. Field outlines in GPRinfo are sourced from the operators of the fields only. Outlines are updated at irregular intervals but with at least one major update per year.

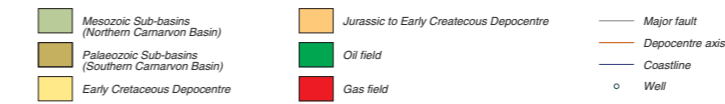
Period (Formation)	Oil accumulation	Gas accumulation
Paleocene		
Barremian (Windalia Sandstone)	Green	Yellow
Valanginian & Berriasian (Barrow Group)	Green	Red
Tithonian, Oxfordian and Middle Jurassic	Blue	Orange
Upper Triassic (Brigadier and Mungaroo Formations)	Blue	Purple



07-2459-14



Field outlines supplied by Encorn Petroleum Information Pty Ltd. Field outlines in GPRinfo are sourced from the operators of the fields only. Outlines are updated at irregular intervals but with at least one major update per year.



EXMOUTH SUB-BASIN PETROLEUM PLAY ELEMENTS

Element	Description
Source	Thick Triassic sections on the Exmouth Plateau, in particular the deltaic sediments of the Mungaroo Formation which are considered the source of the major gas fields. Migration from the proven Jurassic oil kitchen of the Exmouth Sub-basin and the potential for migration from the Jurassic section in the Investigator Sub-basin.
Reservoir	Proven Cretaceous Barrow Group and Triassic sandstone reservoirs.
Seal	Regional seal of the Cretaceous Muderong Shale. Intra-formational seals within the Late Triassic and Early Cretaceous deltaic sequences.
Traps	Triassic fault blocks and associated drape, Cretaceous inversion anticlines and structural/stratigraphic traps.
Infrastructure and Markets	Current oil production from the deepwater Exmouth Sub-basin fields to east of the Release areas. Exmouth Plateau is the site of active and successful exploration for giant gas fields for export LNG.

1. Location map of Release areas W08-18, W08-19 and W08-20, showing existing petroleum permits, known field and discoveries.
2. Major oil and gas accumulations in the northern Carnarvon Basin indicating age of main reservoir.
3. Regional stratigraphy of the northern Carnarvon Basin.
4. Structural elements of the northern Carnarvon Basin showing the 2008 Release areas.