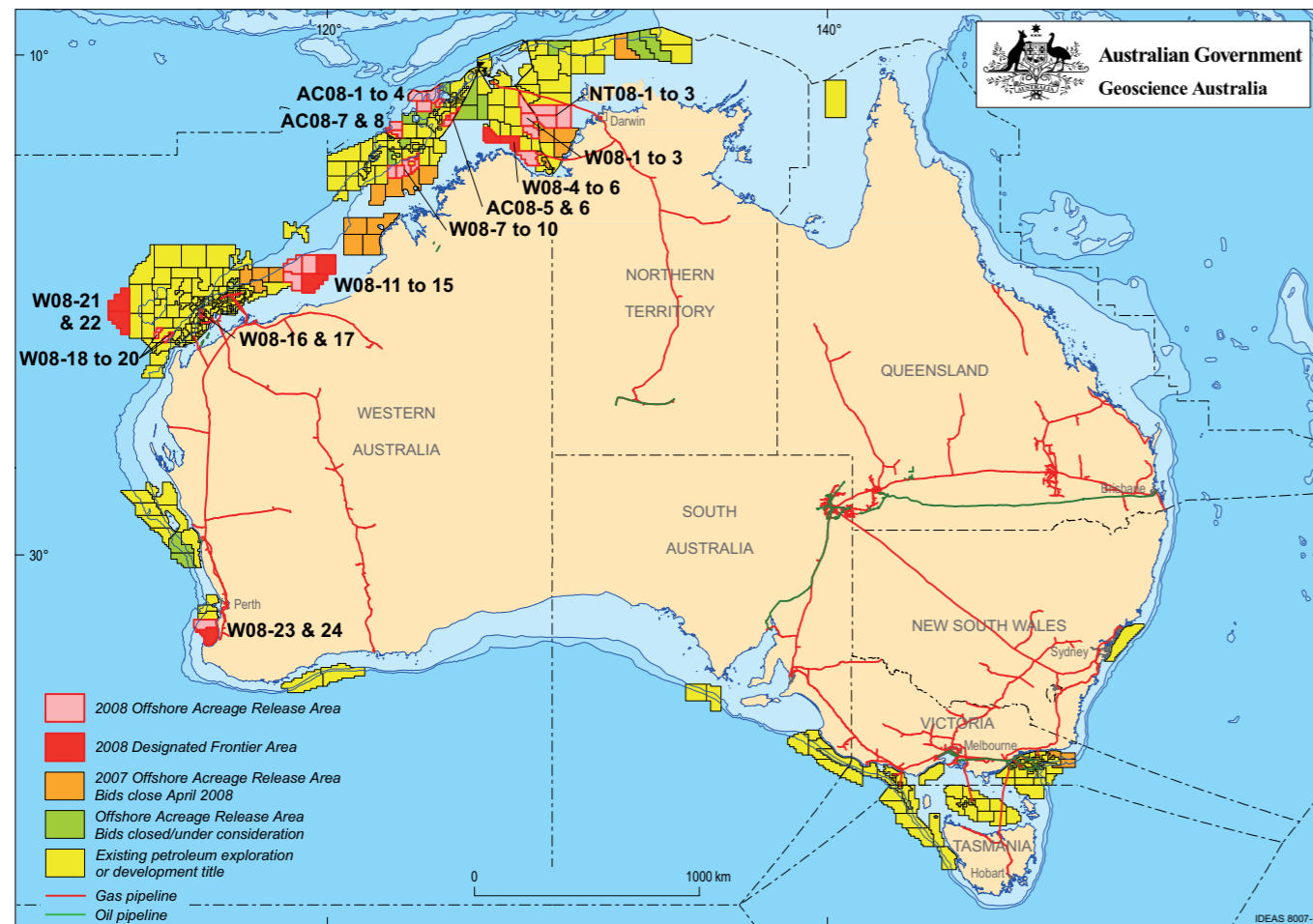


2008 Release of Offshore Petroleum Exploration Areas

The 2008 Offshore Petroleum Exploration Acreage release comprises 35 Release areas, located across five basins. The Release areas range from frontier to mature status and offer opportunities for exploration companies of all sizes.

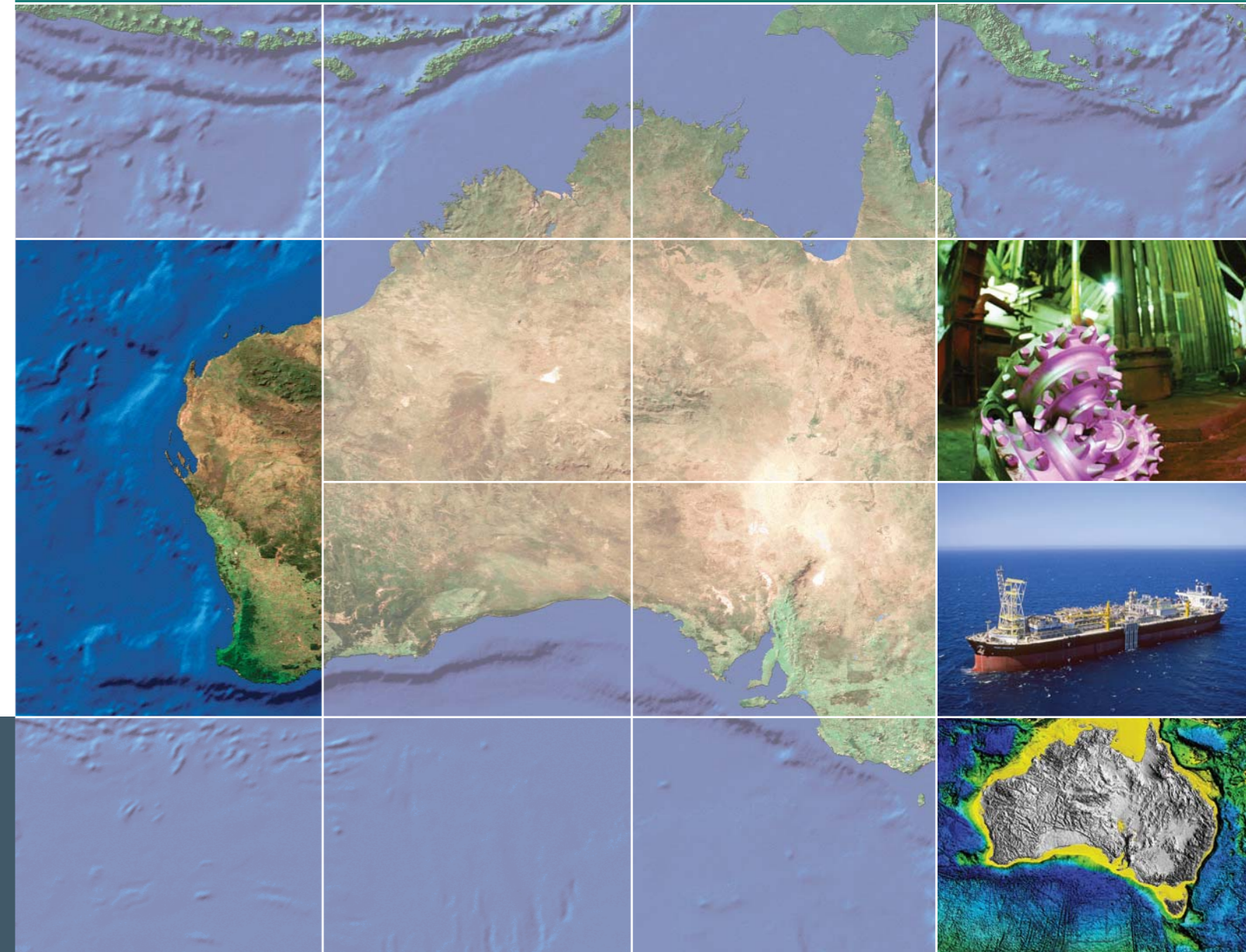
Comprehensive acreage release information packs can be obtained (free of charge) by emailing contact details to: petroleum.exploration@ret.gov.au



EXPLORE AUSTRALIA

EXMOUTH PLATEAU, CARNARVON BASIN WESTERN AUSTRALIA

Release areas W08-21 and W08-22



FOR MORE INFORMATION CONTACT:

Mr Bob Pegler
General Manager
Offshore Resources Branch
Resources Division
Department of Resources, Energy and Tourism
GPO Box 1564, CANBERRA ACT 2601
AUSTRALIA
Telephone: +61 2 6213 7928
Facsimile: +61 2 6213 7955
E-mail: petroleum.exploration@ret.gov.au
Internet: www.ret.gov.au/petexp

FOR GEOSCIENTIFIC ENQUIRIES CONTACT:

Dr Clinton Foster
Chief of Division
Petroleum & Marine Division
Geoscience Australia
GPO Box 378, CANBERRA ACT 2601
AUSTRALIA
Telephone: +61 2 6249 9447
Facsimile: +61 2 6249 9933
E-mail: Clinton.Foster@ga.gov.au
Internet: www.ga.gov.au

BIDS CLOSE 9 APRIL 2009



Australian Government
Geoscience Australia

Current Exploration Opportunities in the Exmouth Plateau, Carnarvon Basin, Western Australia Offshore Australia. Open for bids until 9 April 2009

Release areas W08-21 and W08-22

- Designated Frontier Area Tax Concession applies to Release areas W08-21 and W08-22
- Deepwater frontier of Australia's premier hydrocarbon province
- Proven Triassic fault block play in adjacent acreage
- Large un-drilled areas with potential for new plays
- Special Notices apply, refer to Guidance Notes.

Geoscience Australia Reports/Products

New Reports/Products

- Seismic transects of Australia's frontier continental margins. (2006) GA Record 2006/004.

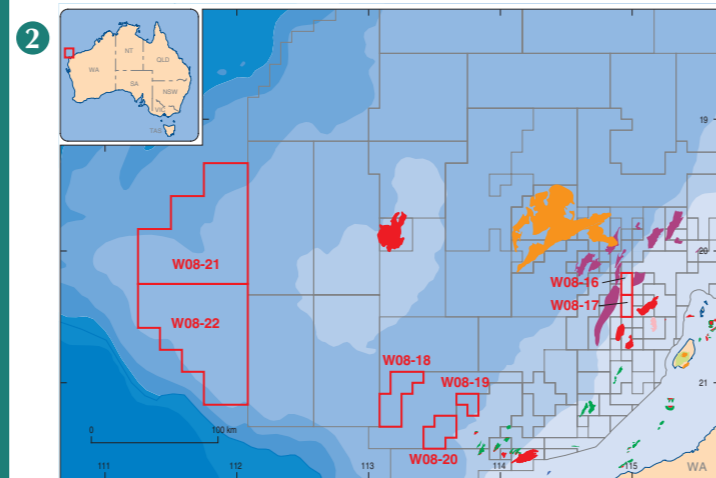
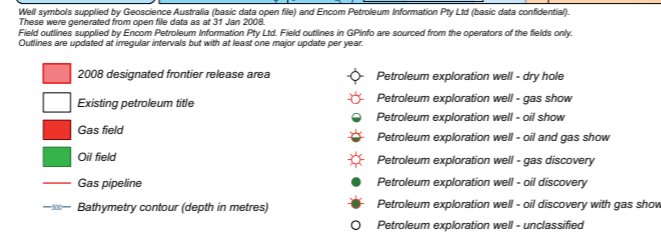
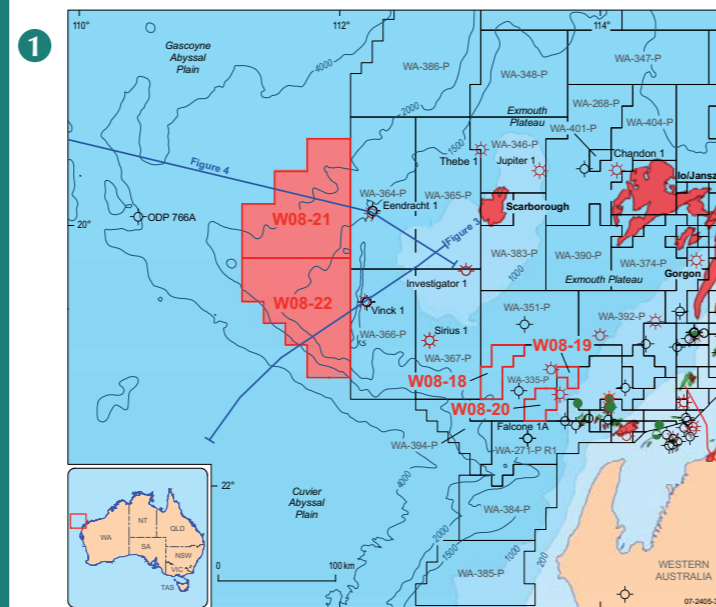
Other Reports/Products

- Triassic biostratigraphic study of greater Exmouth Plateau, synthesis report. (2006) Geoscience Australia Repository destructive analysis report 1297 unpublished
- Oils of Western Australia II: Regional petroleum geochemistry and correlation of crude oils and condensates from Western Australia and Papua New Guinea. (2005) Geoscience Australia and GeoMark Research
- Geological framework of the outer Exmouth Plateau and adjacent ocean basins. (2004) GA Record 2004/13
- Geological framework of the Wallaby Plateau and adjacent areas. (2002) GA Record 2002/21.

Contact Geoscience Australia's Sales Centre for more information or to order these reports or products, phone 61 (0)2 6249 9966, e-mail sales@ga.gov.au

Relevant Industry Data

- Australian North West Shelf Digital Atlas, www.nwsda.com



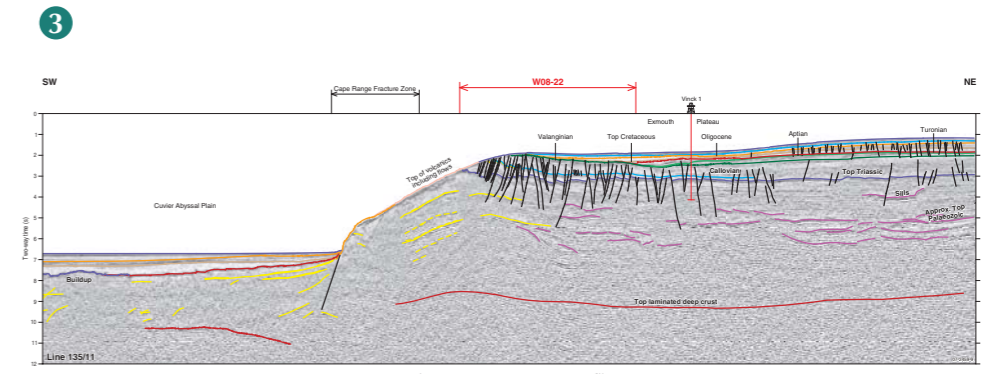
Period (Formation)	Oil accumulation	Gas accumulation
Paleocene		
Barremian (Windalia Sandstone)		
Valanginian & Berriasian (Barrow Group)		
Tithonian, Oxfordian and Middle Jurassic		
Upper Triassic (Brigadier and Mungaroo Formations)		

1. Location map of Release areas W08-21 and W08-22, showing existing petroleum permits, known fields and discoveries, and a seismic section shown in figure 3.

2. Major oil and gas accumulations in the northern Carnarvon Basin indicating age of main reservoir.

3. Regional seismic line 135/11 through Release Area W08-22, southern Exmouth Plateau and Cuvier Abyssal Plain, location shown on Figure 1 (after Stagg et al, 2004; Alcock et al, 2006).

4. Regional stratigraphy of the northern Carnarvon Basin.



EXMOUTH PLATEAU PETROLEUM PLAY ELEMENTS

Source	Thick Triassic sections on the Exmouth Plateau, in particular the deltaic sediments of the Mungaroo Formation which are considered the source of the major gas fields. Also the potential for migration from the Jurassic section in the Investigator Sub-basin.
Reservoir	Proven Cretaceous, Jurassic and Triassic sandstone reservoirs.
Seal	Rhaetian marls provide a regional seal over the Mungaroo Formation sands and Early Cretaceous to Recent deepwater deposits provide a regional top seal to any Jurassic and Early Cretaceous sands. Also intraformational seals within the Late Triassic deltaic sequence.
Traps	Triassic fault blocks and associated drape, Cretaceous inversion anticlines and structural/stratigraphic traps.
Infrastructure and Markets	Exmouth Plateau is the site of active and successful exploration for giant gas fields for export LNG. Designated Frontier Area Tax Concession applies to Release areas W08-21 and W08-22.

