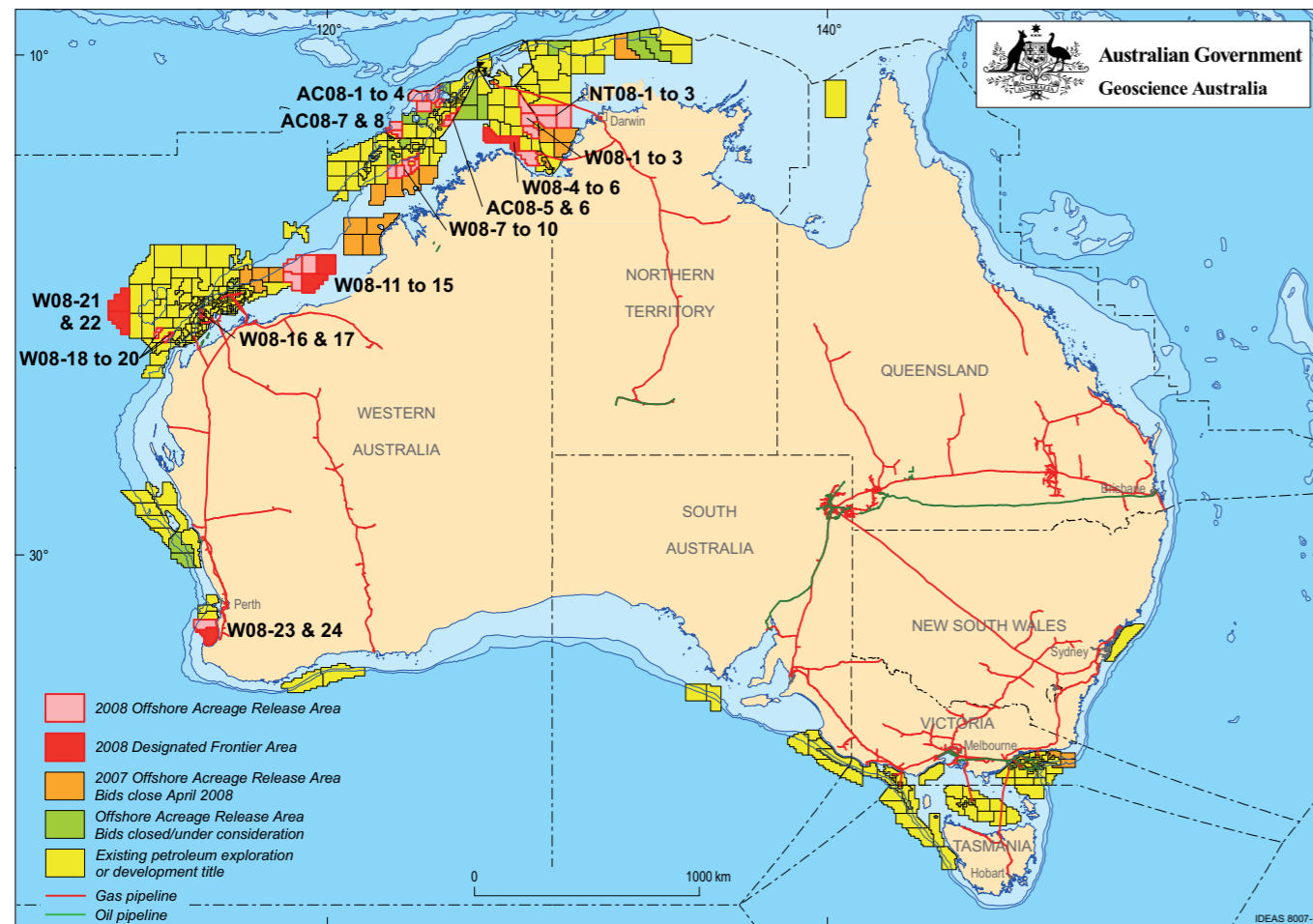


2008 Release of Offshore Petroleum Exploration Areas

The 2008 Offshore Petroleum Exploration Acreage release comprises 35 Release areas, located across five basins. The Release areas range from frontier to mature status and offer opportunities for exploration companies of all sizes.

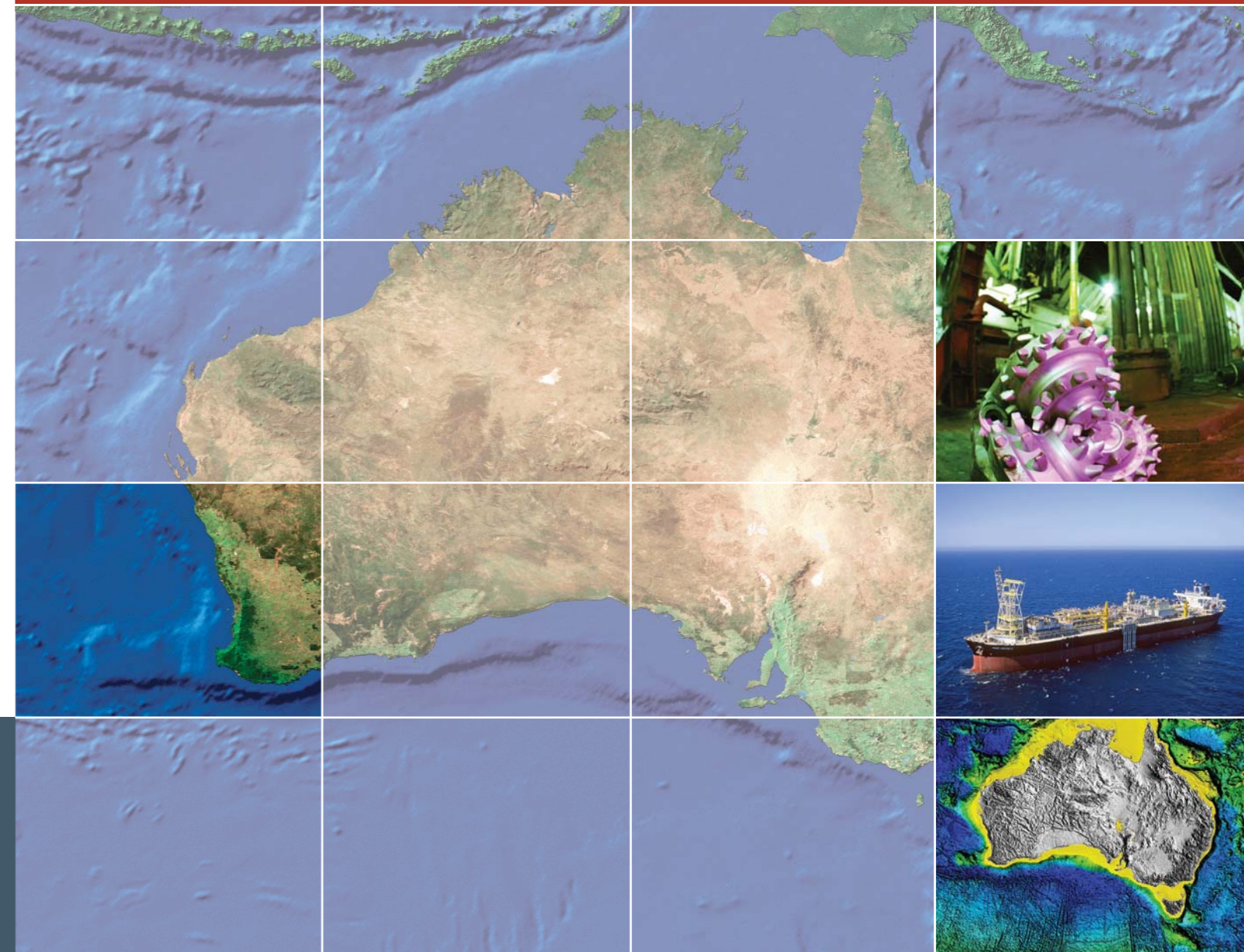
Comprehensive acreage release information packs can be obtained (free of charge) by emailing contact details to: petroleum.exploration@ret.gov.au



EXPLORE AUSTRALIA

VLAMING SUB-BASIN, PERTH BASIN WESTERN AUSTRALIA

Release areas W08-23 and W08-24



FOR MORE INFORMATION CONTACT:

Mr Bob Pegler
General Manager
Offshore Resources Branch
Resources Division
Department of Resources, Energy and Tourism
GPO Box 1564, CANBERRA ACT 2601
AUSTRALIA
Telephone: +61 2 6213 7928
Facsimile: +61 2 6213 7955
E-mail: petroleum.exploration@ret.gov.au
Internet: www.ret.gov.au/petexp

FOR GEOSCIENTIFIC ENQUIRIES CONTACT:

Dr Clinton Foster
Chief of Division
Petroleum & Marine Division
Geoscience Australia
GPO Box 378, CANBERRA ACT 2601
AUSTRALIA
Telephone: +61 2 6249 9447
Facsimile: +61 2 6249 9933
E-mail: Clinton.Foster@ga.gov.au
Internet: www.ga.gov.au

BIDS CLOSE 9 APRIL 2009



Australian Government
Geoscience Australia

Current Exploration Opportunities in the Vlaming Sub-basin, Perth Basin, Western Australia Offshore Australia. Open for bids until 9 April 2009

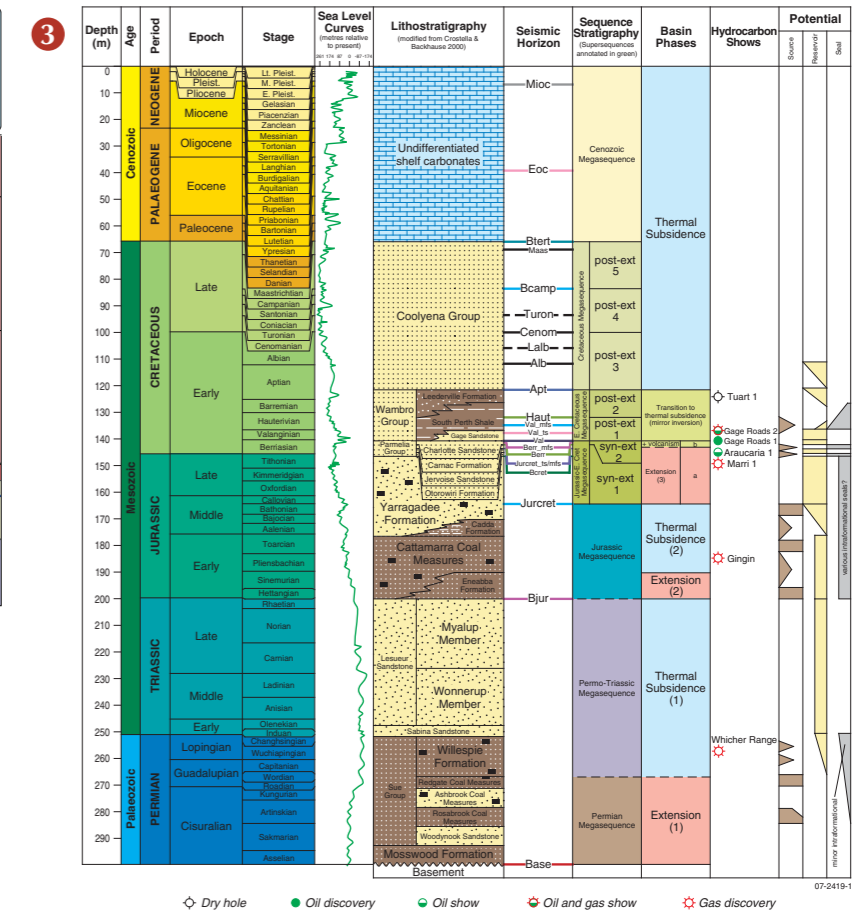
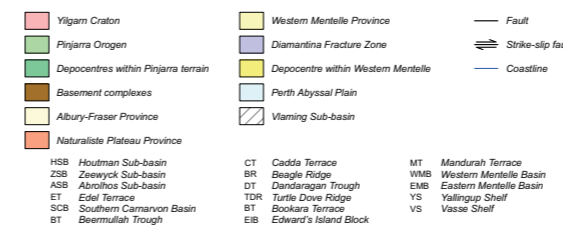
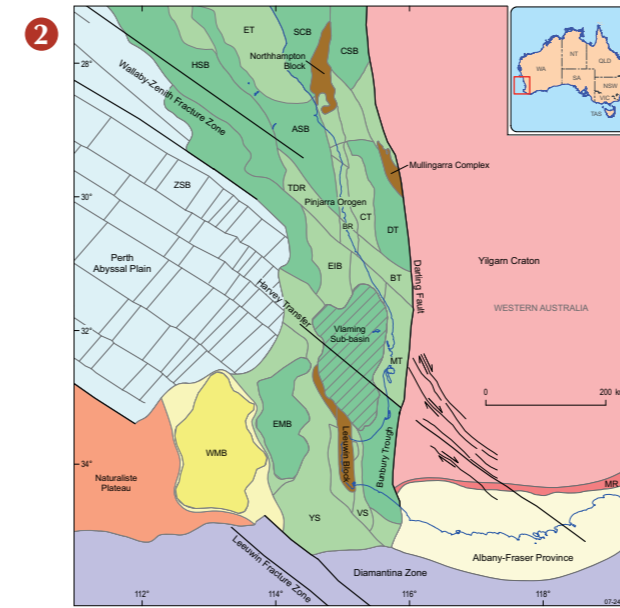
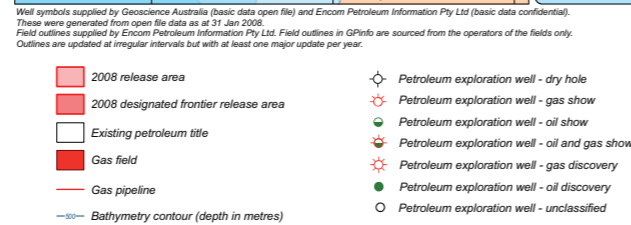
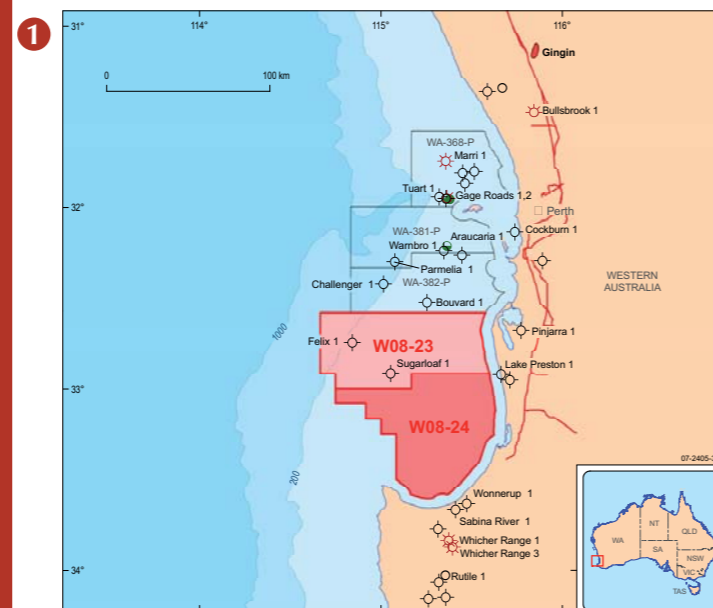
Release areas W08-23 and W08-24

- Designated Frontier Area Tax Concession applies to Release Area W08-24
- Proven petroleum system
- Multiple source, reservoir and seal intervals
- Potential structural and stratigraphic plays
- Recent 3D petroleum systems modelling indicates potential accumulations throughout the basin
- Shallow water depths
- Close to existing West Australian infrastructure
- Special Notices apply, refer to Guidance Notes.

Geoscience Australia Reports/Products

- Basic Data Results from new biostratigraphic and geochemical sampling and analysis of offshore wells from the Vlaming Sub-basin, Western Australia. (2006) Geoscience Australia, Professional Opinion No. 2006/05. (Report for Approval to Sample No S31784)
- Biostratigraphic re-appraisal of nine wells from the northern Vlaming Sub-basin, Perth Basin, Australia. (2005) Geoscience Australia, Professional Opinion No. 2005/05, 14p
- A revised structural framework for frontier basins on the southern and southwestern Australian continental margin. (2003) GA Record 2003/03
- Geological cross-sections of the Vlaming Sub-basin, South Perth Basin. (1990) BMR Record 1990/064
- Hydrocarbon prospectivity of the offshore South Perth Basin. (1989) BMR Record 1989/023.

Contact Geoscience Australia's Sales Centre for more information or to order these reports or products, phone 61 (0)2 6249 9966, e-mail sales@ga.gov.au



1. Location map of Release areas W08-23 and W08-24.
2. Regional tectonic elements and geological setting of the Vlaming Sub-basin. Basin outlines modified from Bradshaw et al, (2003).
3. Stratigraphic chart of the Vlaming Sub-basin, showing seismic sequences, tectonic history and petroleum systems elements.

VLAMING SUB-BASIN PETROLEUM PLAY ELEMENTS

Source	Lower Cretaceous lacustrine shales in the Parmelia Group (Carnac Formation and the Otorowiri Formation), and Middle–Upper Jurassic non-marine coals and carbonaceous shales in the Yarragadee Formation.
Reservoir	Good reservoir rocks exist throughout Late Jurassic and Early Cretaceous strata in the Vlaming Sub-basin. These include the Leederville Formation, Gage Sandstone, Charlotte Sandstone, Jervoise Sandstone, and the upper part of the Yarragadee Formation.
Seal	Early Cretaceous lacustrine shales of the Parmelia Group and the marine South Perth Shale of the Warnbro Group. Localised seal potential of mudstone-dominated intervals throughout the Jurassic.
Traps	Structural and stratigraphic traps at multiple stratigraphic levels.
Infrastructure and Markets	Oil and gas are produced from a number of fields in the nearby onshore Perth Basin and there is a well established gas pipeline network. A commercial oil field in the northern offshore Perth Basin at Cliff Head is in production. Production facilities, construction and installation of pipelines, power cable and umbilical were successfully completed in November 2005. Designated Frontier Area Tax Concession applies to Release Area W08-24.