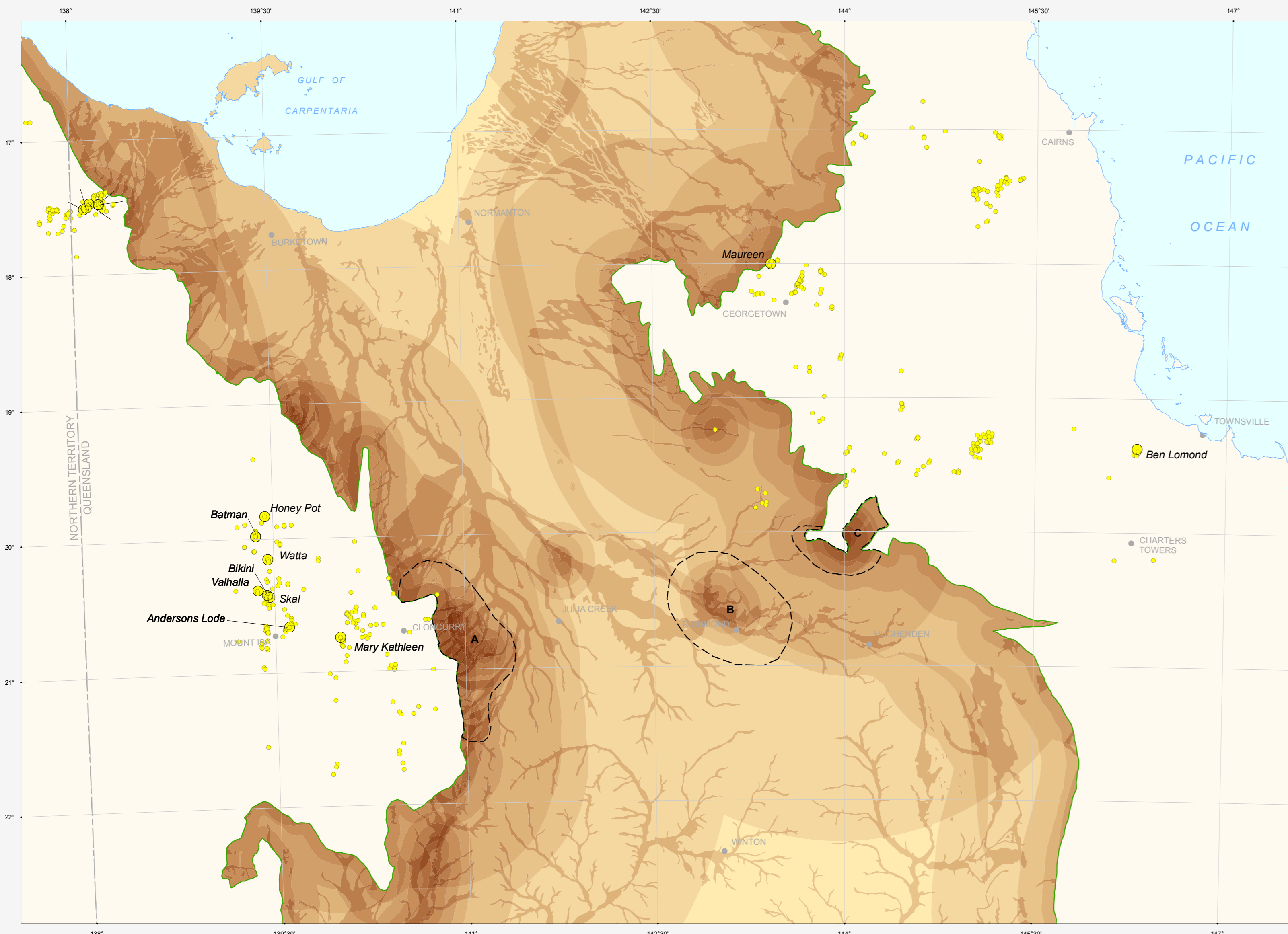


NORTH QUEENSLAND ENERGY SYSTEMS ASSESSMENT

SANDSTONE HOSTED URANIUM CHANNELS POTENTIAL



Sandstone Hosted Uranium Channels Potential

Low High

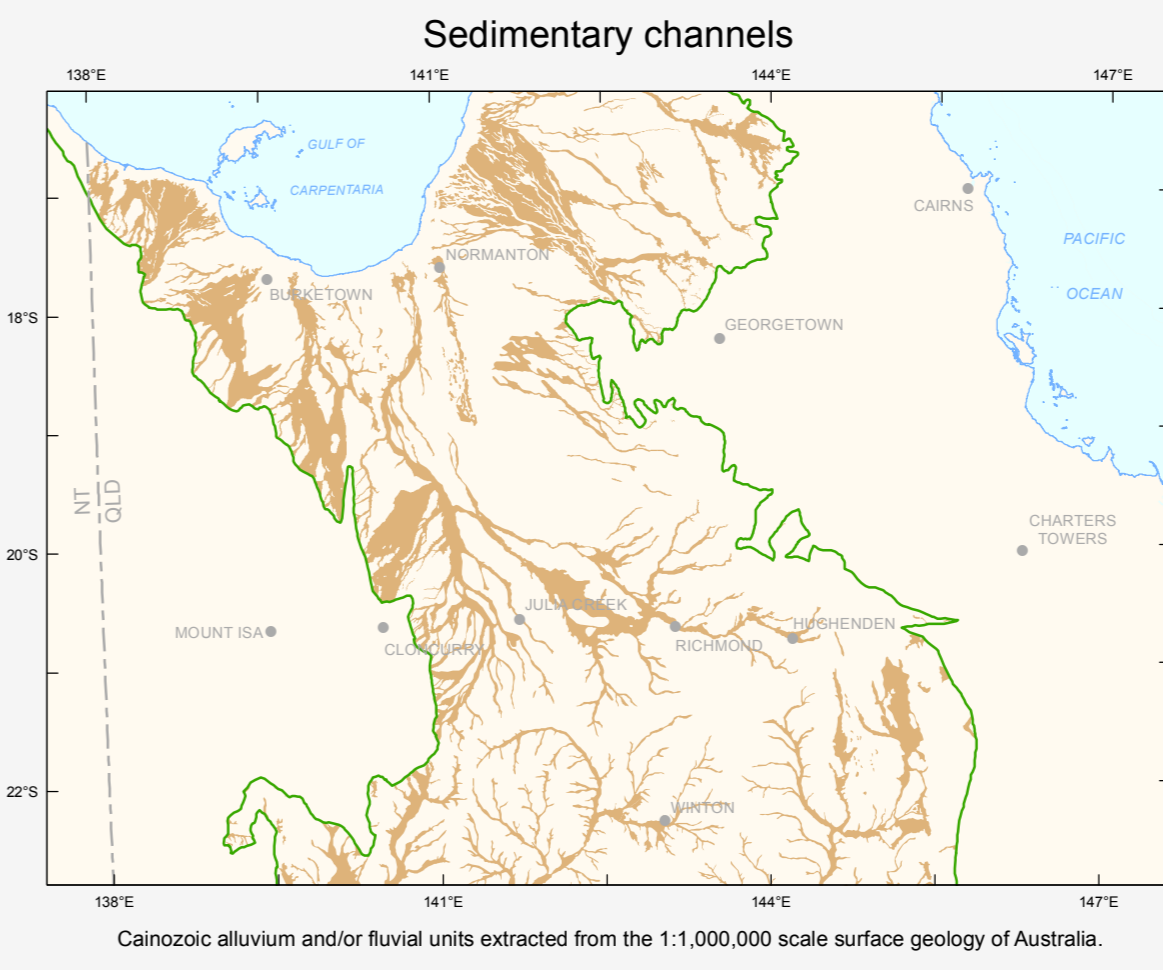
Potential for sandstone hosted uranium deposits based on summation of mineral system parameters shown in insets. Using this analysis, the following areas have been identified as having significant potential for sandstone hosted uranium deposits. See text (Huston, 2010) for more information and references.

- A** Area east of Cloncurry
- B** Area 90 km north of Hughenden
- C** Area around the township of Richmond

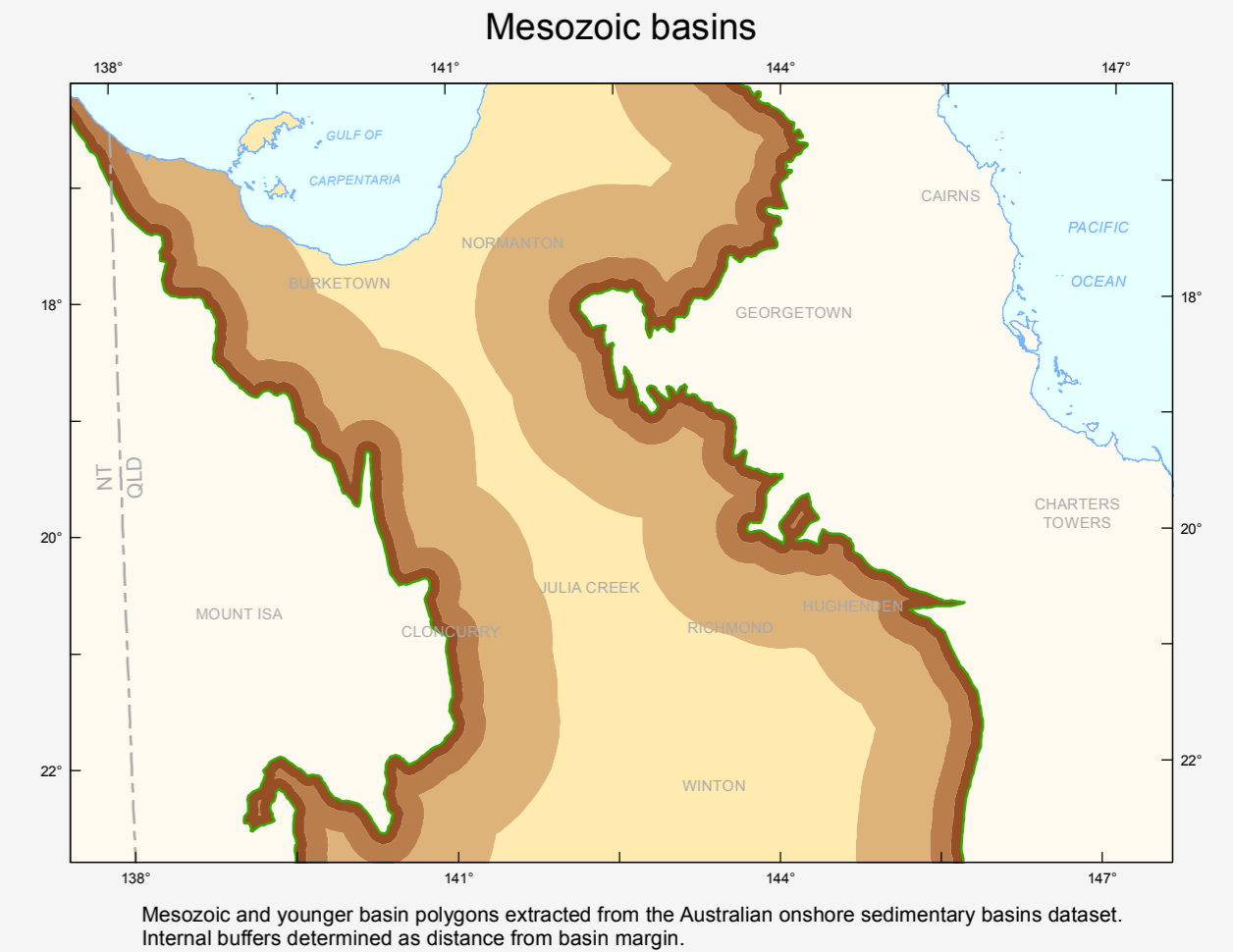
0 250 kilometres

Transverse Mercator Projection; Central Meridian 144° E; Geocentric Datum of Australia (GDA94)

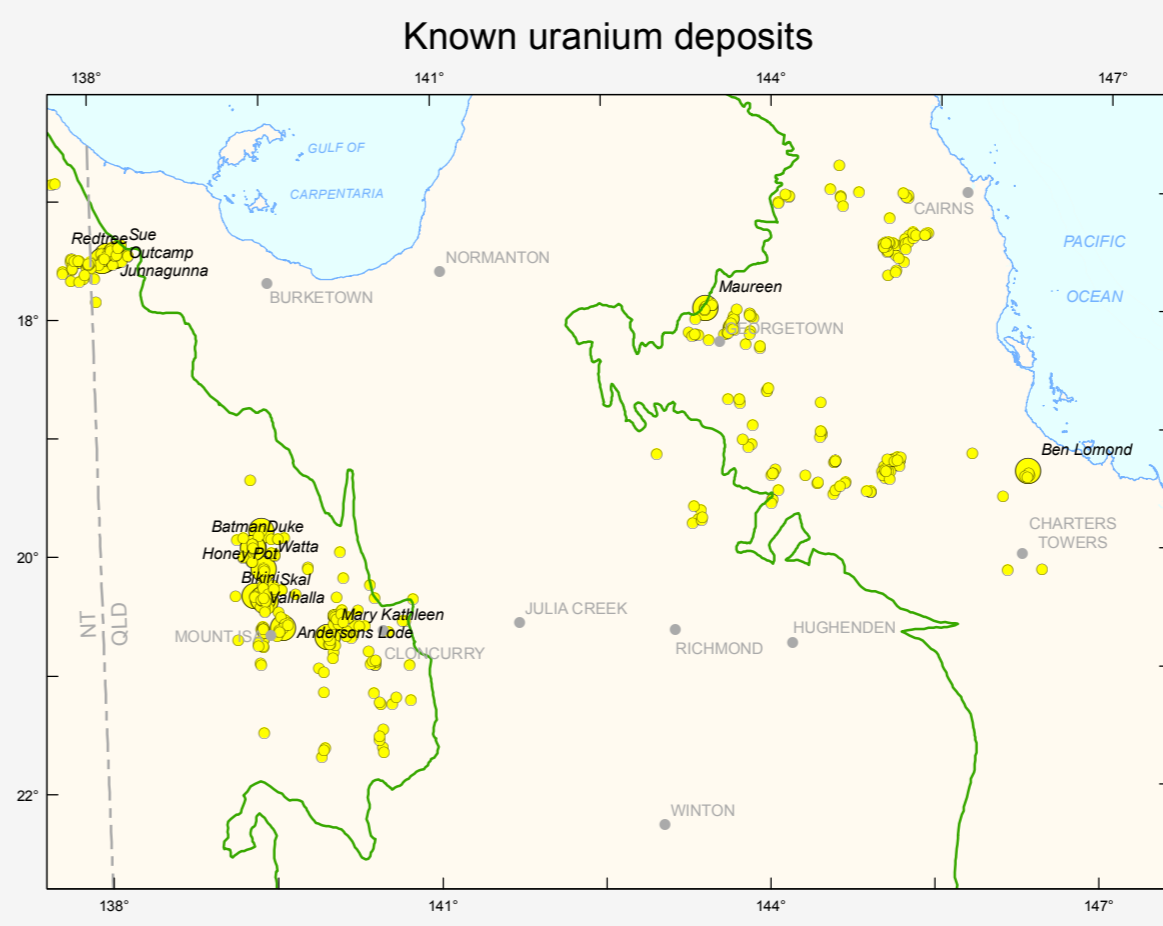
- Uranium deposits
- Uranium occurrences
- Mesozoic basin boundary
- High potential boundary



Sedimentary channels
Cainozoic alluvium and/or fluvial units extracted from the 1:1,000,000 scale surface geology of Australia.



Mesozoic basins
Mesozoic and younger basin polygons extracted from the Australian onshore sedimentary basins dataset. Internal buffers determined as distance from basin margin.



Known uranium deposits
Uranium deposits and occurrences extracted from Geoscience Australia's OZMIN/MINLOC database. Mineral data not used in analysis.



MAP LOCALITY

Compiled by S.E. van der Wielen, Geoscience Australia
Data analysis by S.E. van der Wielen and D.P. Connolly
Cartography by D.P. Connolly
Produced by GIS Services Group, Onshore Energy and Minerals Division, Geoscience Australia using ESRI ArcGIS 9.3 software
This map forms part of Geoscience Australia's Onshore Energy Security Program

It is recommended that this map be referred to as:
van der Wielen S.E., Connolly D.P., 2010.
Sandstone Hosted Uranium Channels Potential. In: Huston D.L. (editor), 2010. North Queensland Energy Assessment. Geoscience Australia, Canberra, GA Record, in prep.

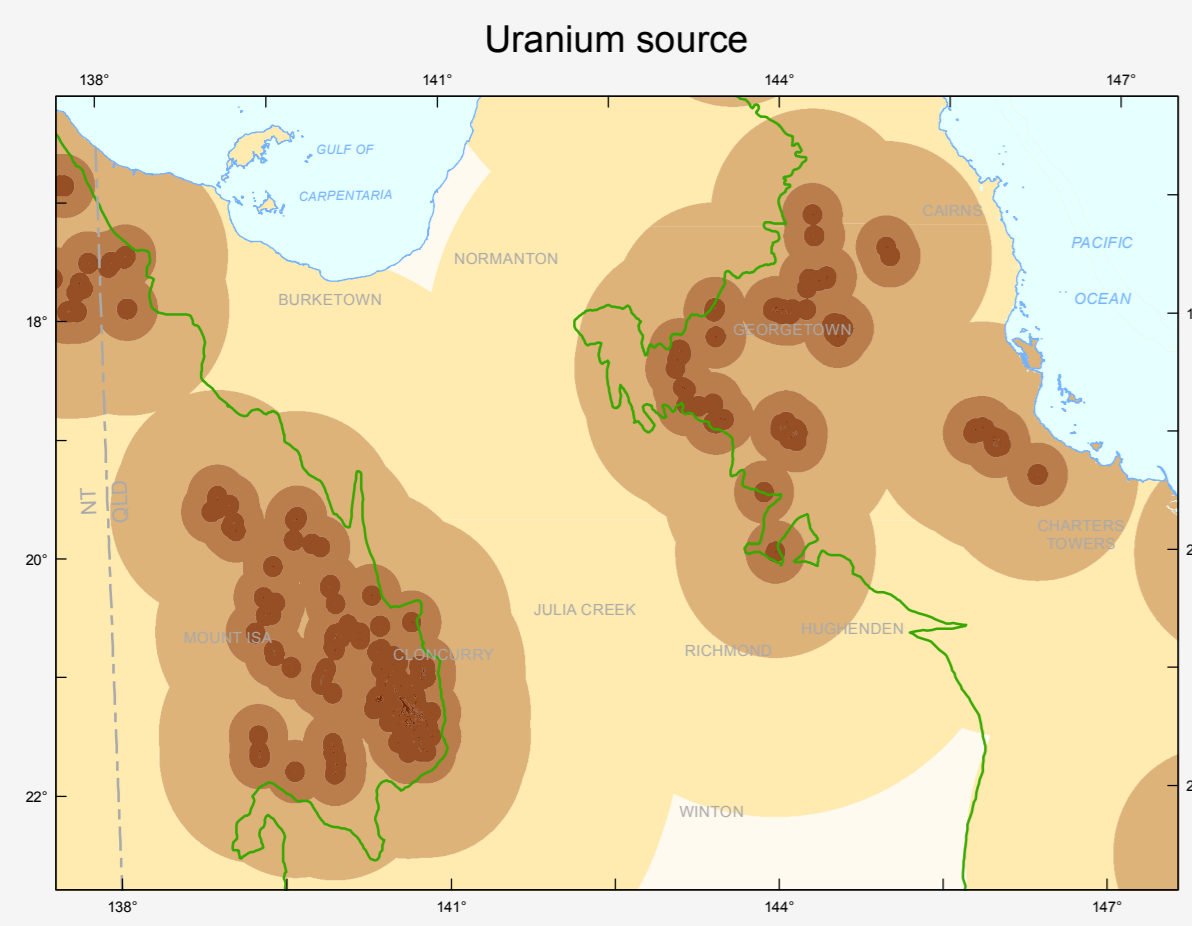
© Commonwealth of Australia (Geoscience Australia) 2010.
This material is released under the Creative Commons Attribution 2.5 Australia Licence

This work is copyright. Apart from any fair dealings for the purpose of study, research, criticism, or review, as permitted under the Copyright Act 1968, no part may be reproduced by any process without written permission. Copyright is the responsibility of the Chief Executive Officer, Geoscience Australia. Requests and enquiries should be directed to the Chief Executive Officer, Geoscience Australia, GPO Box 378 Canberra ACT 2601

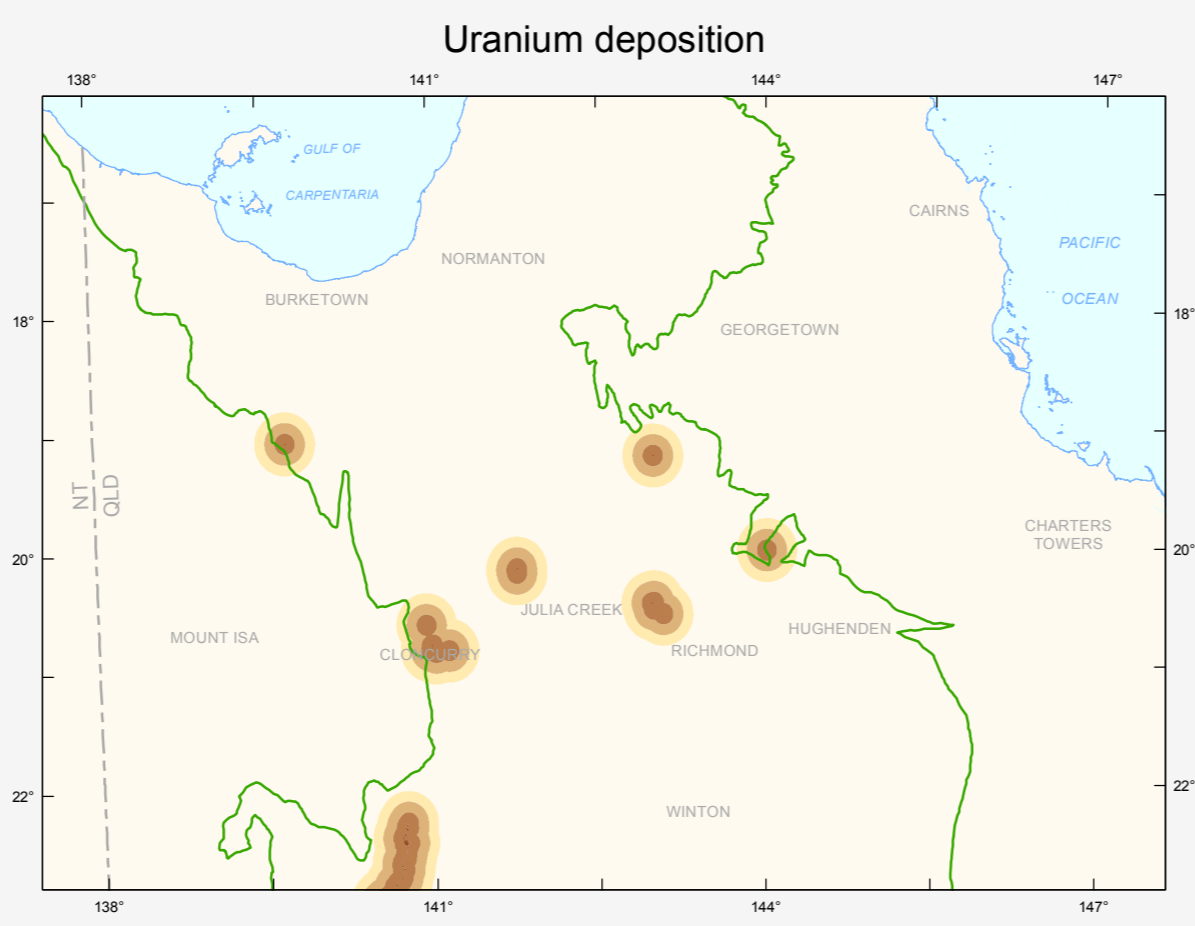
Geoscience Australia has tried to make the information in this product as accurate as possible. However, it does not guarantee that the information is totally accurate or complete. THEREFORE YOU SHOULD NOT RELY SOLELY ON THIS INFORMATION WHEN MAKING A COMMERCIAL DECISION

Published by Geoscience Australia, Department of Resources, Energy and Tourism, Canberra, Australia. Issued under the authority of the Minister for Resources, Energy and Tourism
Copies of the GA Record containing this map can be downloaded from the Geoscience Australia internet site at: <http://www.ga.gov.au> or by contacting:

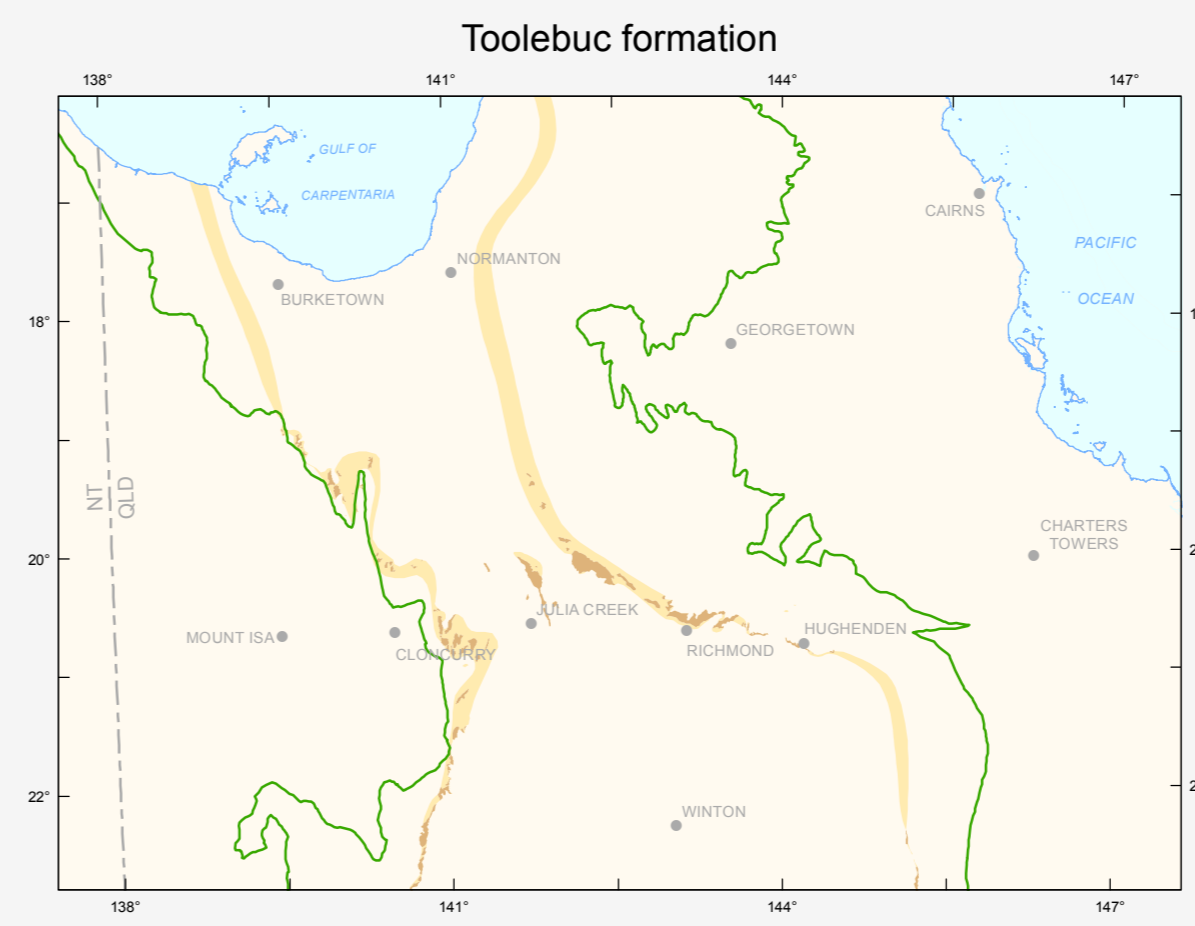
Sales Centre, Geoscience Australia
GPO Box 378
Canberra ACT 2601
Phone (02) 6249 9966, Facsimile (02) 6249 9960
Email: sales@ga.gov.au



Uranium source
Potential uranium-rich source rocks using a cut off value of 10 ppm uranium. The values were estimated from filtered gamma-ray spectrometric data. Values were selected for crystalline basement only.



Uranium deposition
Zones of uranium enrichment using a cut off value of 10 ppm uranium. The values were estimated from filtered gamma-ray spectrometric data. Values were selected for Mesozoic and younger basins only.



Toolebuic formation
Interpreted distribution of the Toolebuic Formation from drilling and surface geology (1:1,000,000 scale surface geology of Australia).