



Plate 9.1: Brisbane, February 1893 – Flooding in Melbourne St, South Brisbane (Plate: courtesy of John Oxley Library)



Plate 9.2: Brisbane, January 1974 – Aerial view of South Brisbane showing the southern end of the Victoria Bridge leading into Melbourne St. (Plate: courtesy of John Oxley Library)



Plate 9.3: Caboolture, 11 December 1991 – View south of flooding from Centre Point Plaza car park in Elliot St. (Plate: courtesy of Caboolture Shire Council Local Studies Collection)



Plate 9.4: Caboolture, 5 February 1931 - Matthew Terrace (opposite the railway station) looking north from King St after the peak of the flood (Plate: courtesy of Caboolture Shire Council Local Studies Collection)



Plate 9.5-6: Caboolture – 1931 - View south from the present Elliot St over the present Centenary Lakes/Caboolture Sports Centre area. Morayfield road on left. Top: Flood, January. Bottom: No flood, 5 February, 1 pm (Plate: courtesy of Caboolture Shire Council Local Studies Collection)



Plate 9.7: Pine Rivers, 12 December 1991 - Cars engulfed by flooding of the South Pine River over the Bald Hills Flats, Gympie Road, Strathpine (Plate: courtesy of Pine Rivers Local Studies Library)

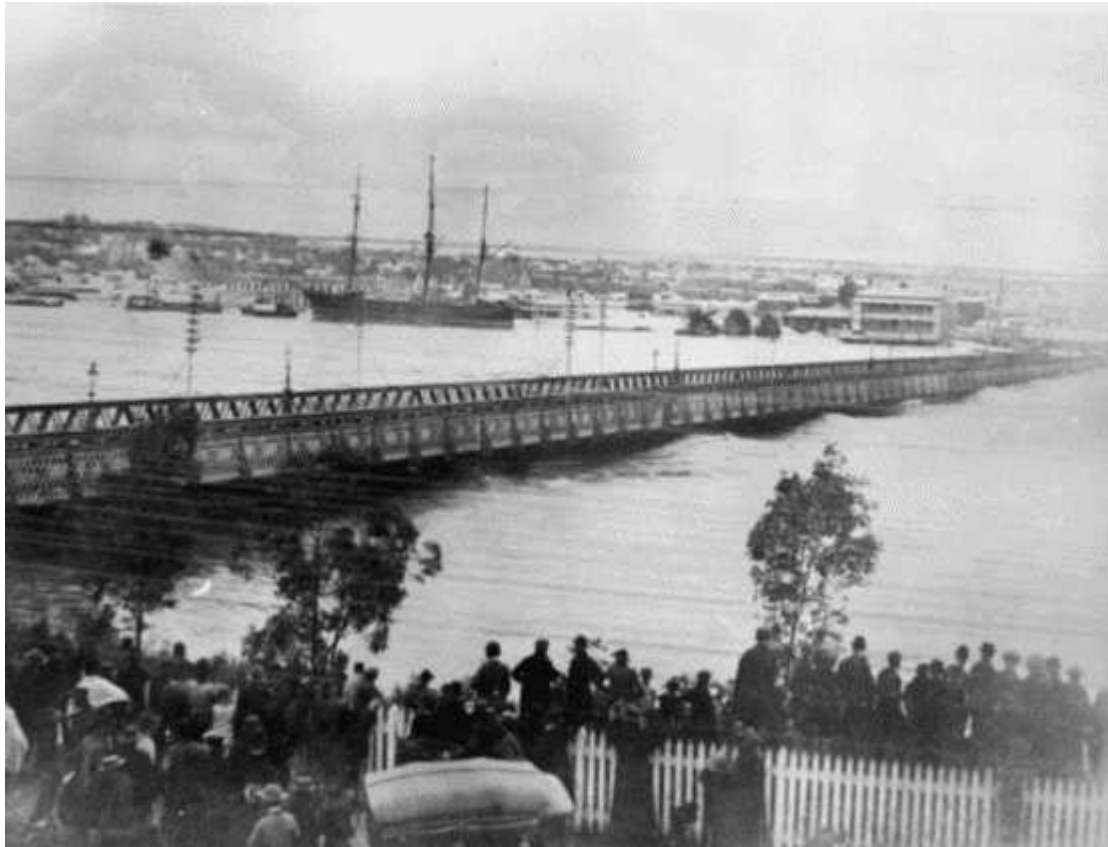


Plate 9.8: Brisbane, February 1893 – Floodwaters lapping the Victoria Bridge prior to it being heavily damaged by the floodwaters and floating debris (Plate: courtesy of John Oxley Library)



Plate 9.9: Brisbane, February 1893 – Looking towards South Brisbane after the 1893 flood at the Victoria Bridge, damaged in the flooding (Plate: courtesy of John Oxley Library)



Plates 9.10-11: Ipswich – View north from top of Ellenborough St., Ipswich - 1893. Top: Flood, February. Bottom: No flood, about May (Courtesy of Hughes collection, Ipswich Historical Society. Plate: Whitehead Studios)



Plate 9.12: Ipswich, February 1893 – Flood damage, Wharf St, looking south (Courtesy of Hughes collection, Ipswich Historical Society. Plate: B. Taylor, courtesy A. Geertsma).



Plates 9.13-14: Ipswich – View from the Ipswich general hospital towards Churchill St and the St Stephens Presbyterian Church. February 1893. Top: Flood. Bottom: No flood (Plate: courtesy of Hughes collection, Ipswich Historical Society)





Plate 9.15: Ipswich January 1974 – Flood - Aerial view taken after the height of the flood  
(Plate: courtesy of Hughes collection, Ipswich Historical Society)



Plate 9.16: Brisbane, January 1974 – Flood – Oxley Creek, looking north, Corinda (Plate: W. Muller)





Plate 9.17: Brisbane, January 1974 – Central Avenue, Sherwood. Looking east towards Oxley Creek and the Tennyson Powerhouse (Plate: courtesy of John Oxley Library)



Plates 9.18-19: Ipswich - Looking down East St to the north, near intersection with Limestone St, towards David Trumpy Bridge. Top: 28 January 1974 – Flood (Courtesy of Hughes collection, Ipswich Historical Society. Plate: A. Wright). Bottom: November 2000 – No flood (Plate: M. Middelmann)

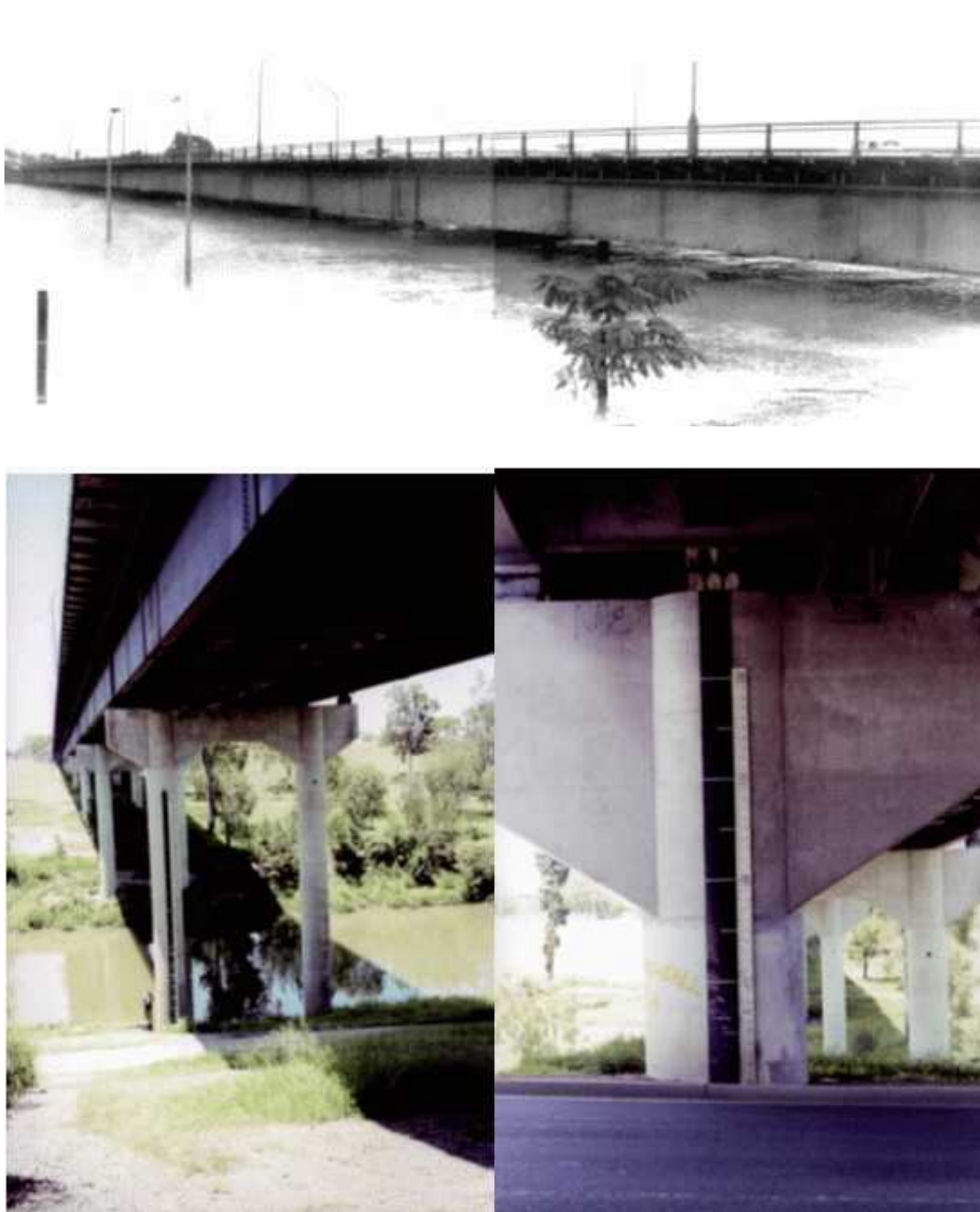


Plate 9.20-22: Ipswich - David Trumpy Bridge. Top: January 1974 – Flood (Courtesy of Hughes collection, Ipswich Historical Society. Plate: P. Willey). Bottom left and right: November 2000 – No flood (Plate: M. Middelman)



Plate 9.23: Brisbane, 29 January 1974 – Flooding of the Brisbane River on both sides of the University of Queensland, St Lucia. On the opposite bank behind the university are the inundated riverside suburbs of Fairfield (left) and Yeronga (right). Taken at 10 am (Plate: courtesy of John Oxley Library)





Plates 9.24-25: Ipswich - Limestone St, looking back to the intersection with East St. Top: January 1974 – Flood (Courtesy of Hughes collection, Ipswich Historical Society. Plate: P. Willey). Bottom: November 2000 – No flood (Plate: M. Middelmann)



Plate 9.26: Brisbane, January 1974 – Flood – Railway shunting yards at Tennyson near Ipswich road (Plate: W. Muller)





Plates 9.27-28: Ipswich - Old Toowoomba Road near One Mile Shopping Centre, Leichhardt, looking towards town. Top: 27 January 1974 – Flood, 9 am (Courtesy of Hughes collection, Ipswich Historical Society. Plate: A. O'Donoghue). Bottom: November 2000 – No flood (Plate: M. Middelmann)



Plates 9.29-30: Ipswich - One Mile Hotel looking towards Leichhardt. Top: January 1974 – Flood (Courtesy of Hughes collection, Ipswich Historical Society. Plate: P. Willey). Bottom: November 2000 – No flood (Plate: M. Middelmann)



Plate 9.31: Brisbane, 28 January 1974 – Aerial view of Brisbane City showing the extent of flooding in the Brisbane Botanical Gardens (bottom left) up to Elizabeth St (Plate: courtesy of John Oxley Library)



Plate 9.32: Logan, January 1974 – Flood - One of the houses lost during the 1974 flood in Tygum Lagoon area, Waterford West. The site is now a Council park (Plate: J. Ebberlinghaus)



Plate 9.33: Logan, January 1947 – Flood – Logan City. Remains of Waterford Bridge (Plate: courtesy of John Oxley Library, Brisbane)



Plate 9.34: Gold Coast, January 1974 – Floods in the Miami Keys area back to Bermuda St. T.E. Peter Drive is covered in water (Plate: R. Anthony)





Plate 9.35: Gold Coast, June 1967 – Looking west of Surfers Paradise towards the flooding in the Bundall and Benowa area (Plate: courtesy of Gold Coast Local Studies Library)