

Figure 2. Greyscale image of the total magnetic intensity - reduced to pole, of the western Arunta region. Solid geology interpretations of the mafic-ultramafic intrusions are superimposed. The locations of subsequent figures are shown.

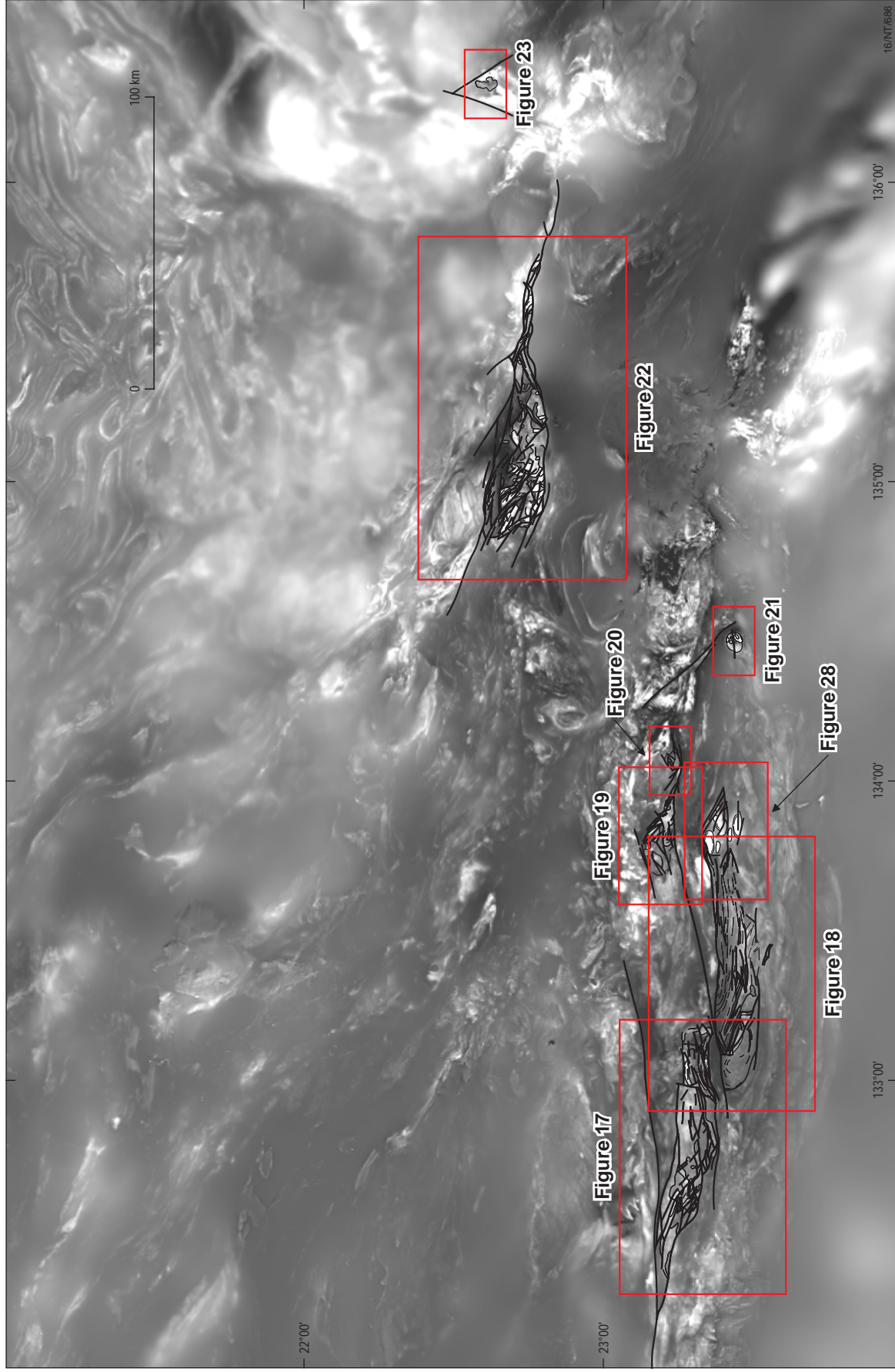


Figure 3. Greyscale image of the total magnetic intensity - reduced to pole, of the eastern Arunta region. Solid geology interpretations of the mafic-ultramafic intrusions are superimposed. The locations of subsequent figures are shown.

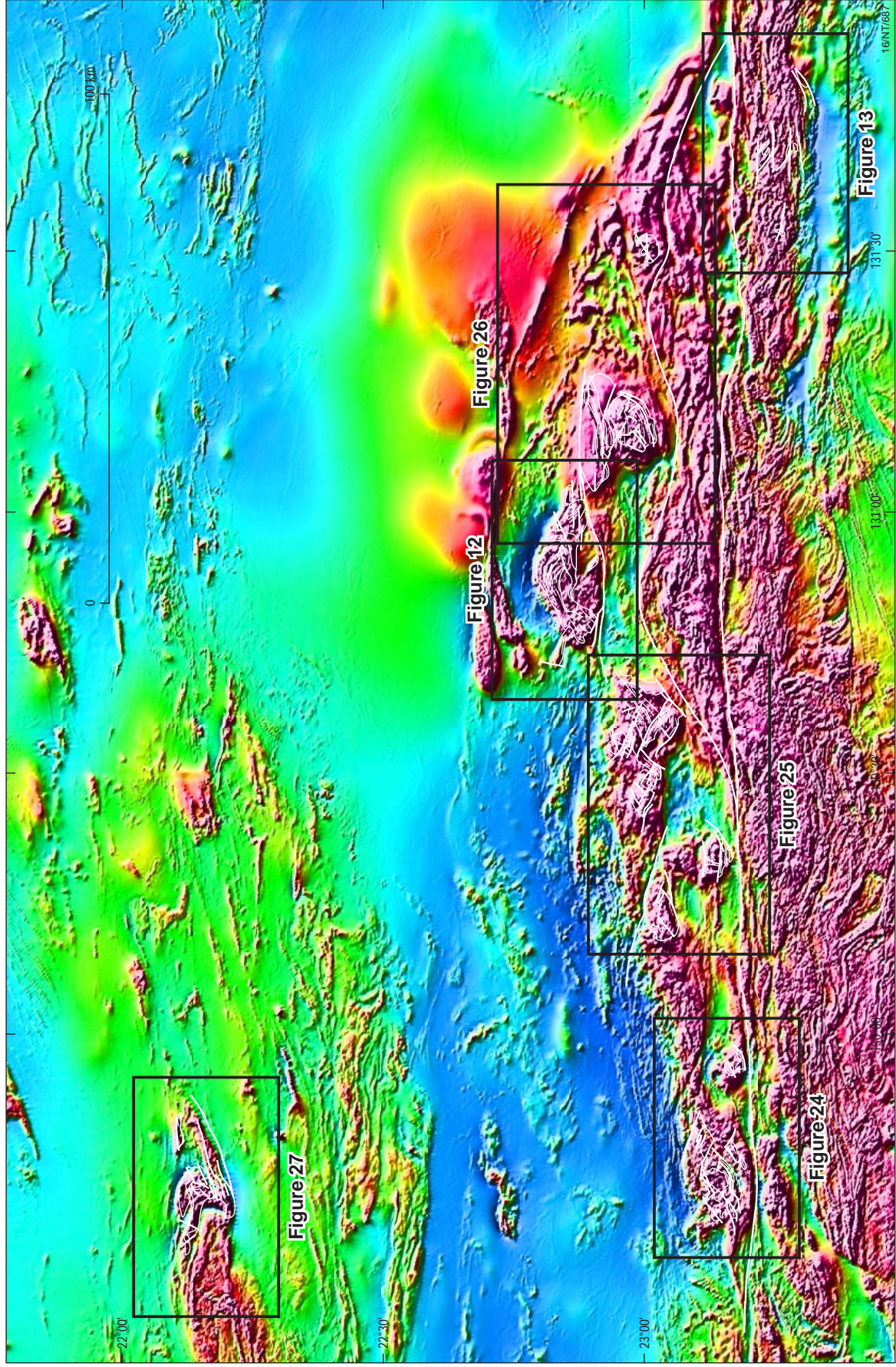


Figure 4. Colour image of the total magnetic intensity - reduced to pole, with a northeasterly illumination of the western Arunta region. Solid geology interpretations of the mafic-ultramafic intrusions are superimposed.

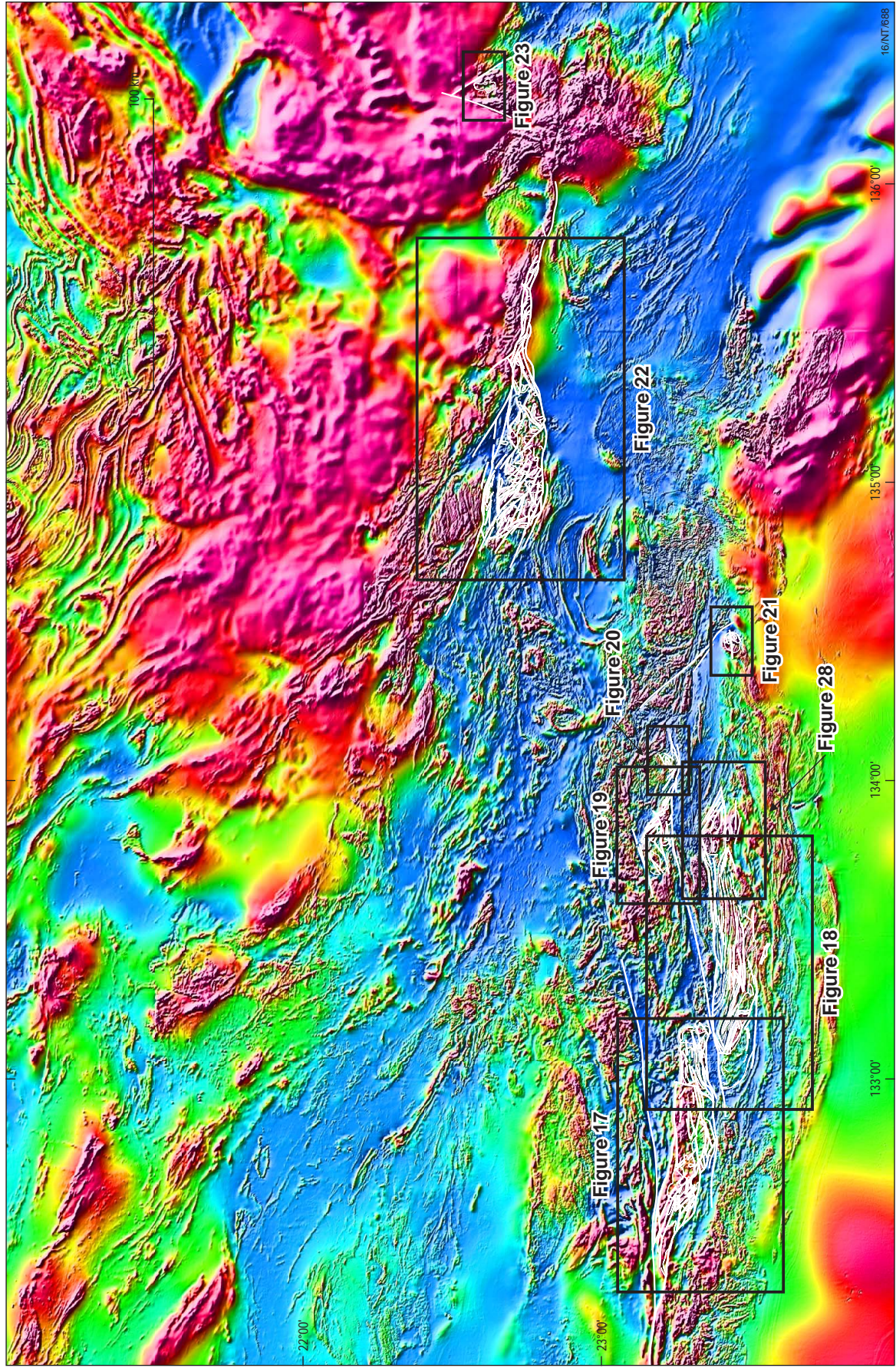


Figure 5. Colour image of the total magnetic intensity - reduced to pole, with a northeasterly illumination of the eastern Arunta region. Solid geology interpretations of the mafic-ultramafic intrusions are superimposed.

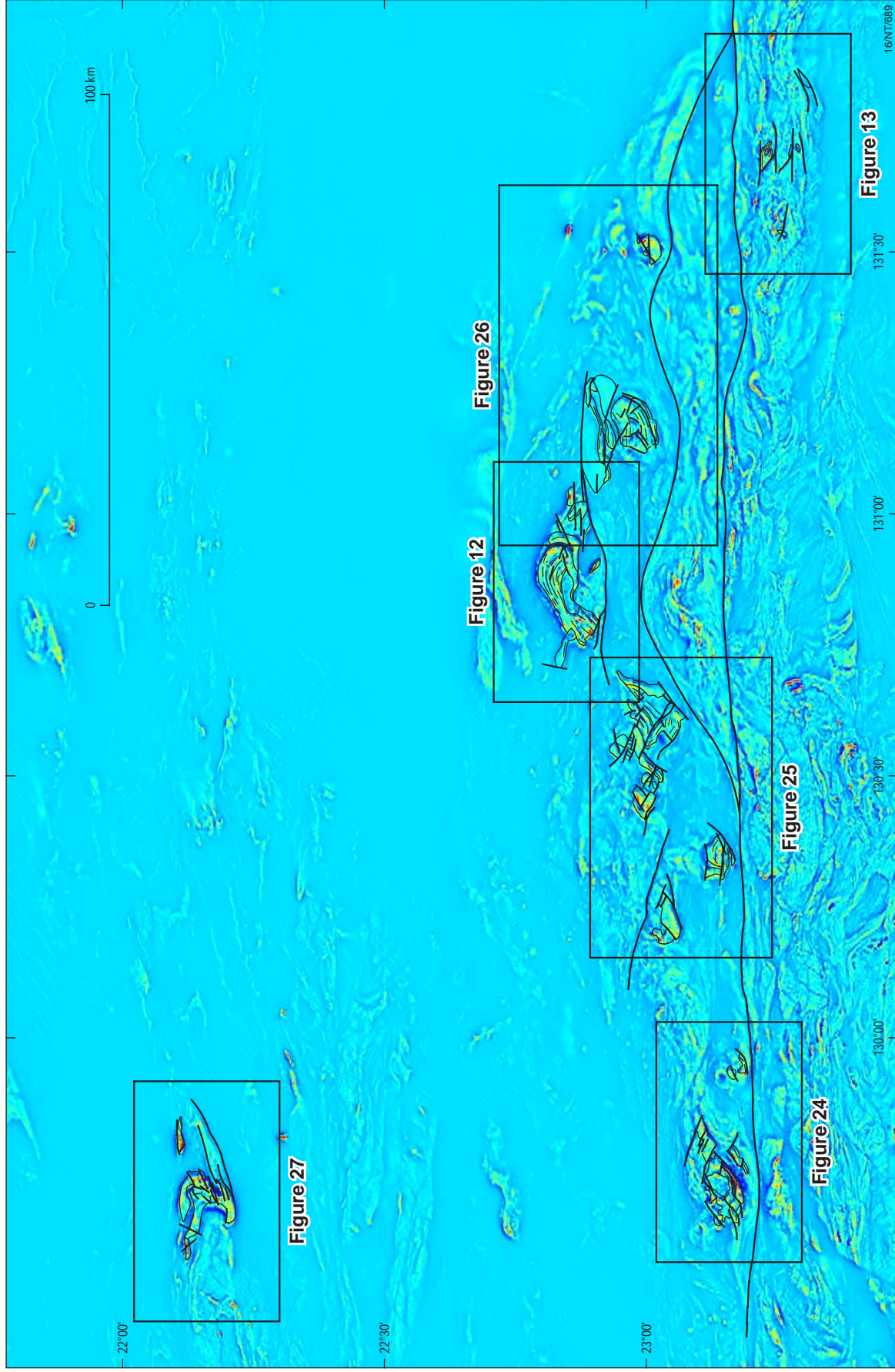


Figure 6. Pseudo colour image of the vertical gradient of the total magnetic intensity - reduced to pole, of the western Arunta region. Solid geology interpretations of the mafic-ultramafic intrusions are superimposed.