

Figure 20a. Geological map of the Harry Anorthositic Gabbro and Johannsen Metagabbro intrusions (modified after Shaw et al., 1983).

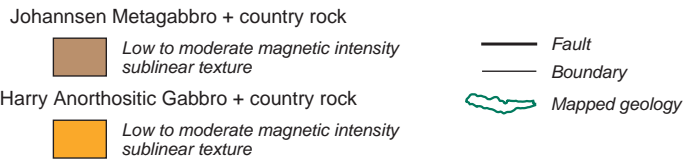
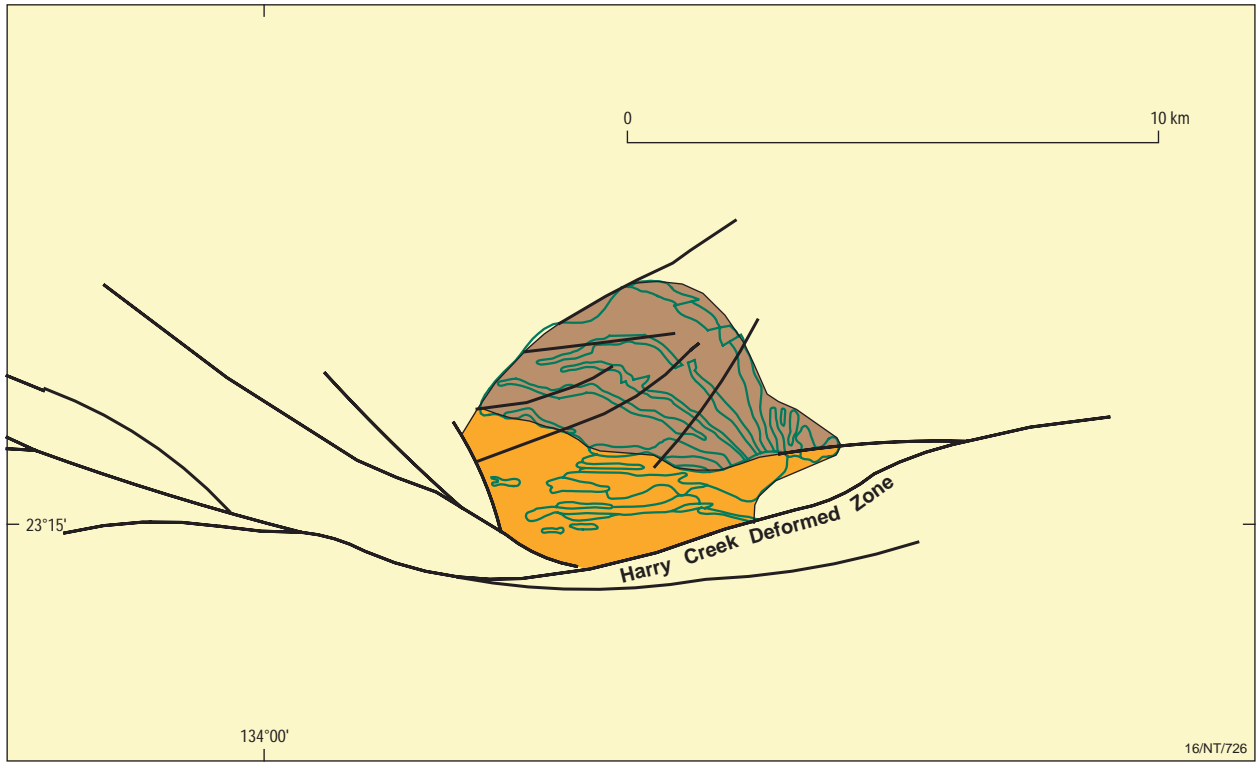
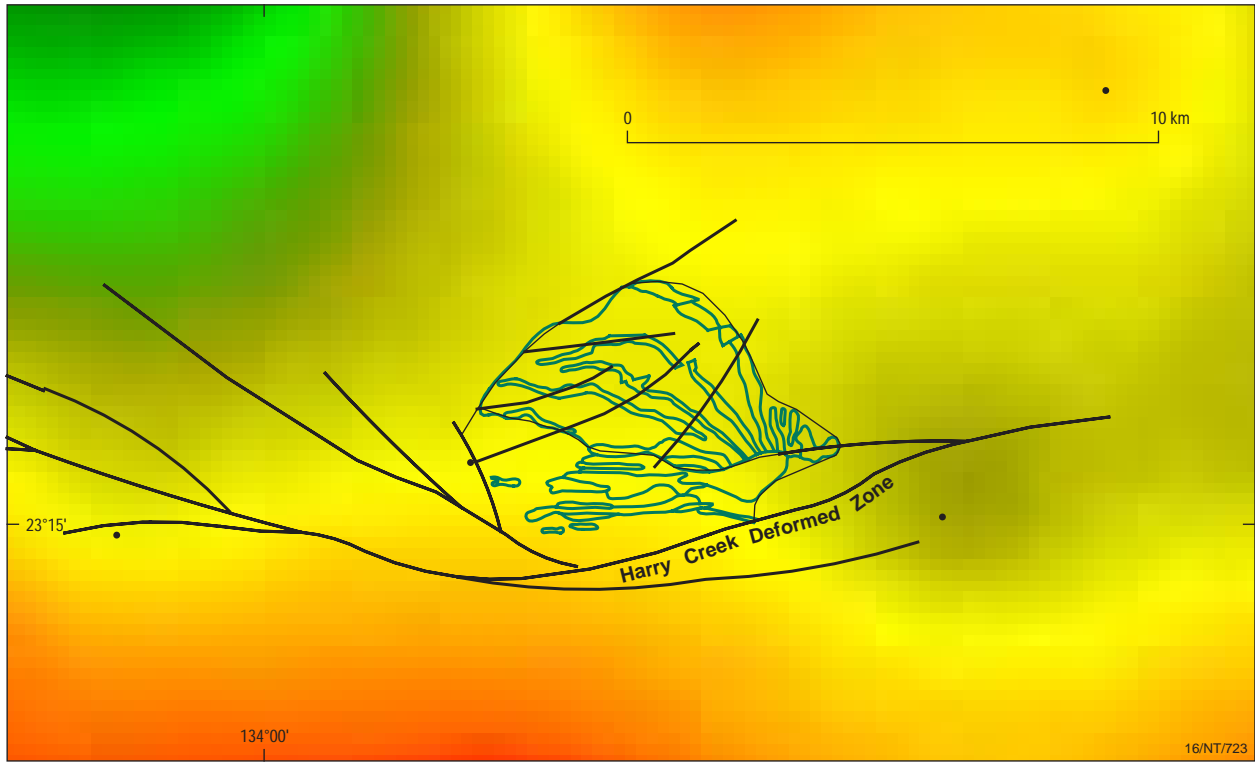
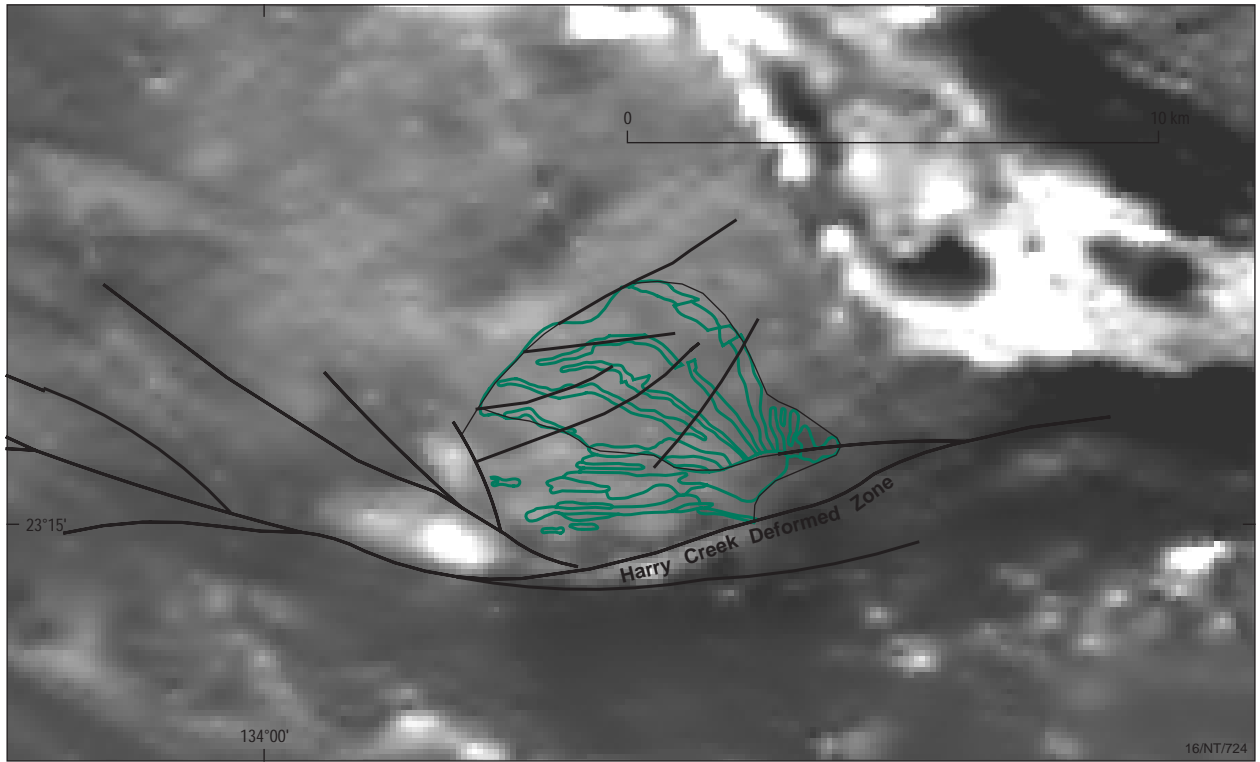


Figure 20b. Solid geology interpretation showing the full sub-cropping extent of the Harry Anorthositic Gabbro.



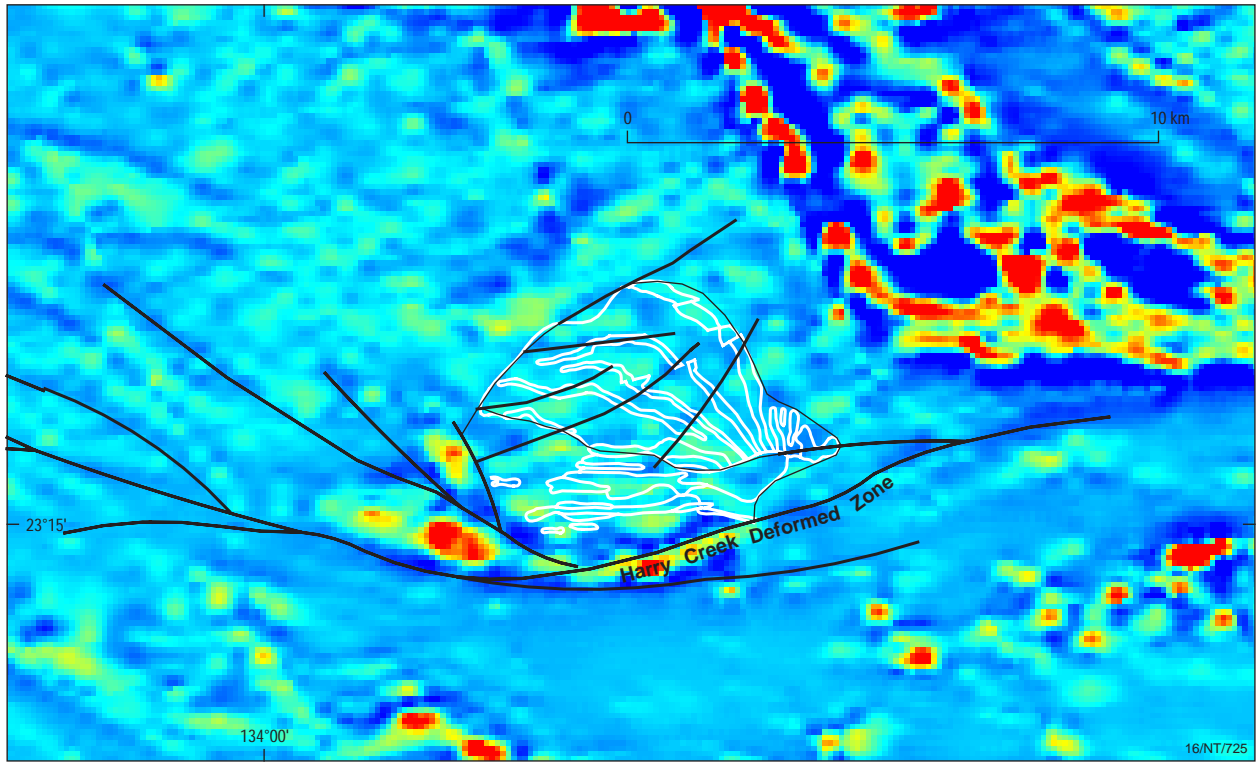
- Fault
- Boundary
- Mapped geology
- Gravity station locality

Figure 20c. Vertical gradient image of the Bouguer gravity field, including gravity station locations.



— Fault      Mapped geology  
— Boundary

Figure 20d. Grey scale image of the total magnetic intensity - reduced to pole.



Fault  
 Boundary  
 Mapped geology

Figure 20e. Pseudo colour image of the vertical gradient applied to the total magnetic intensity (reduced to pole).

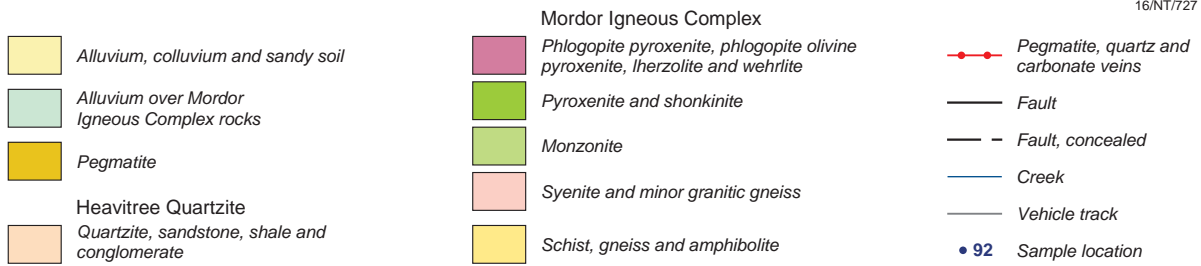
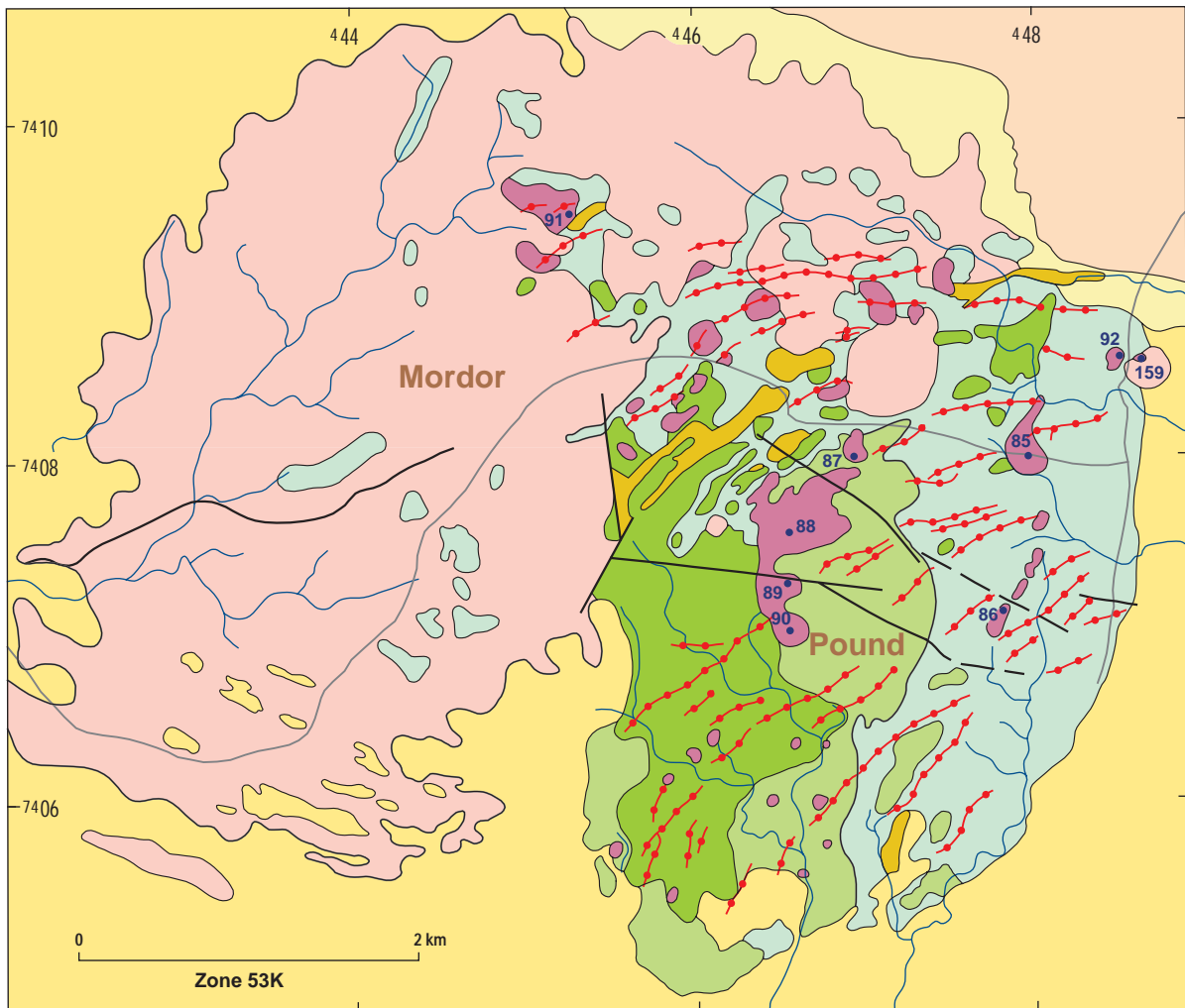


Figure 21a. Geological map of the Mordor Complex (modified after Langworthy & Black, 1978).

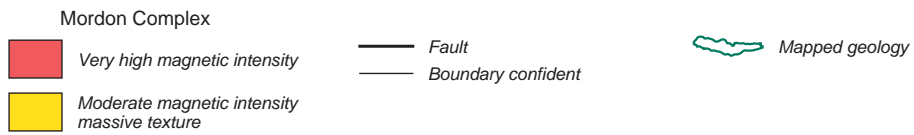
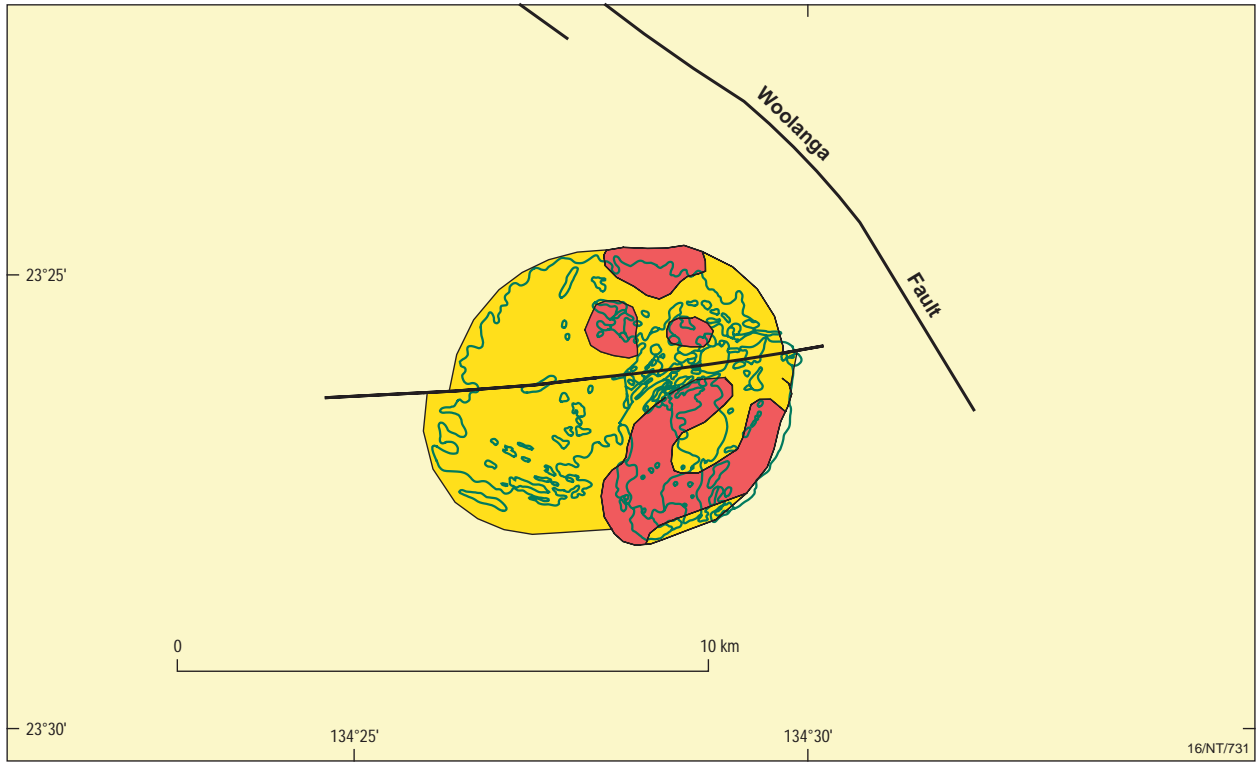
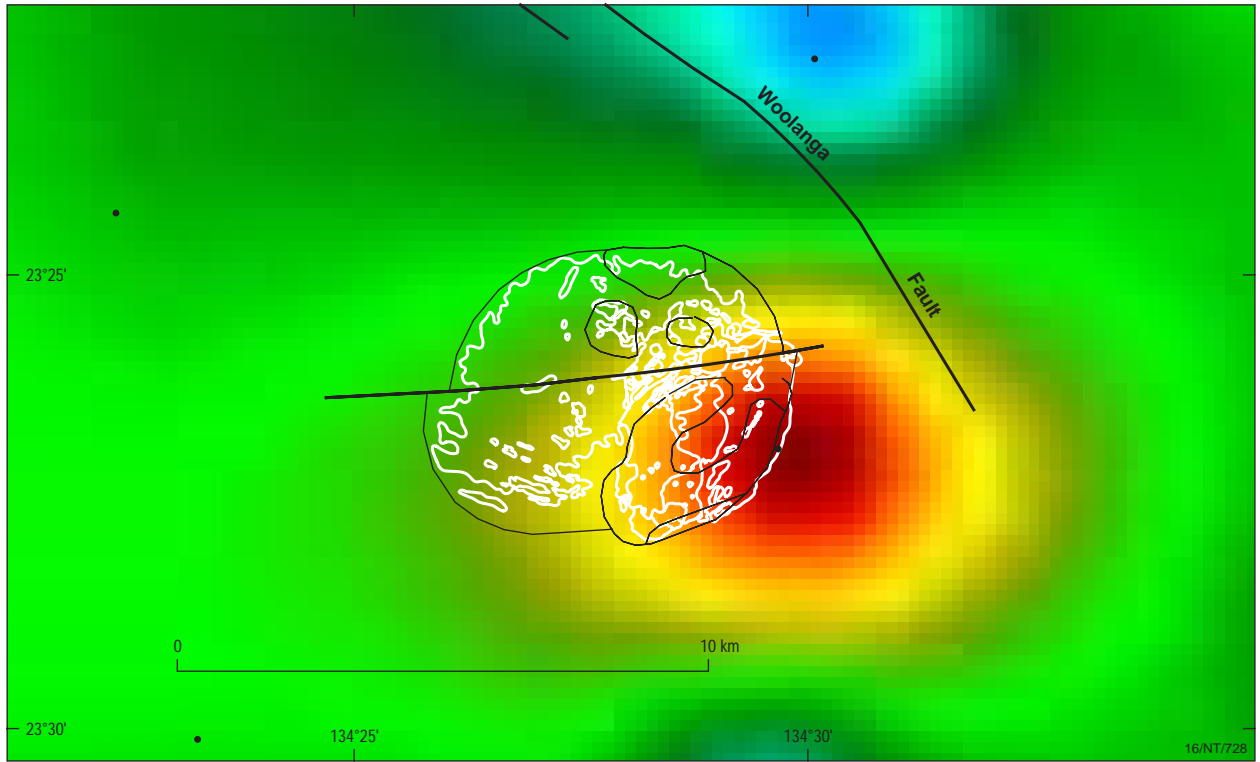
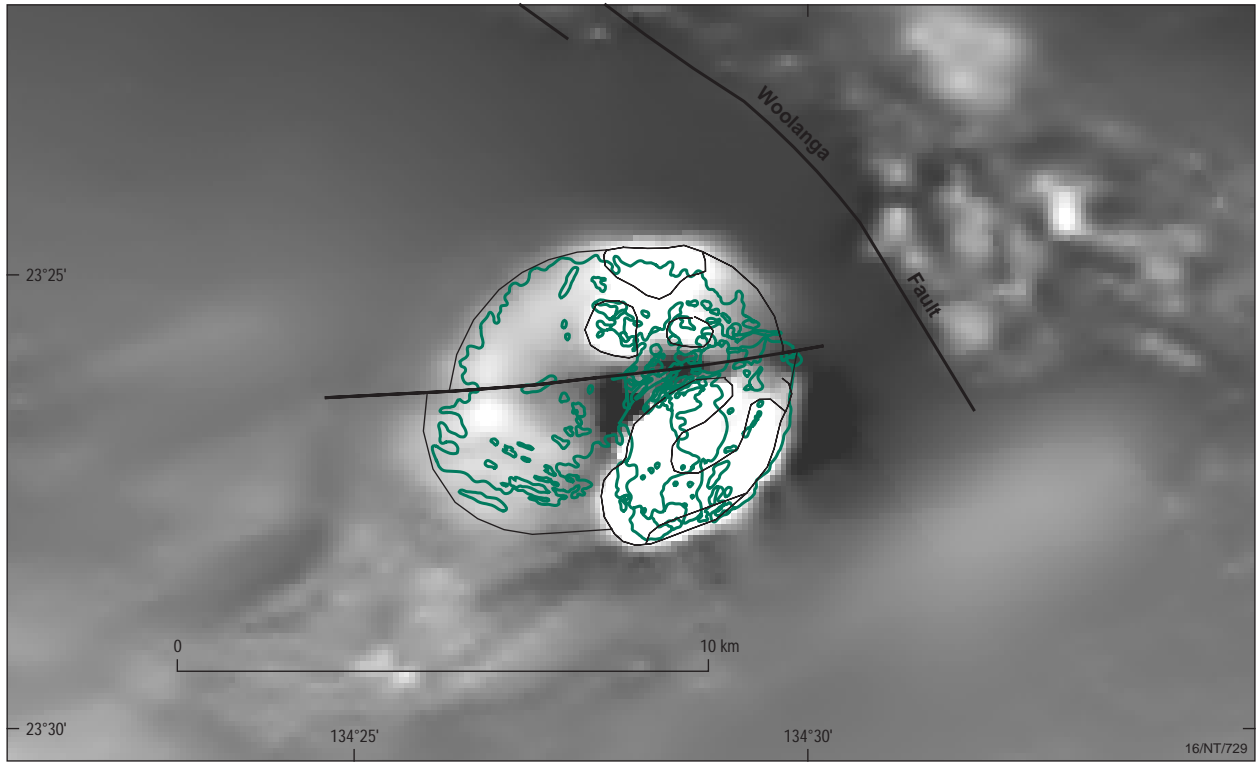


Figure 21b. Solid geology interpretation of the Mordon Complex.



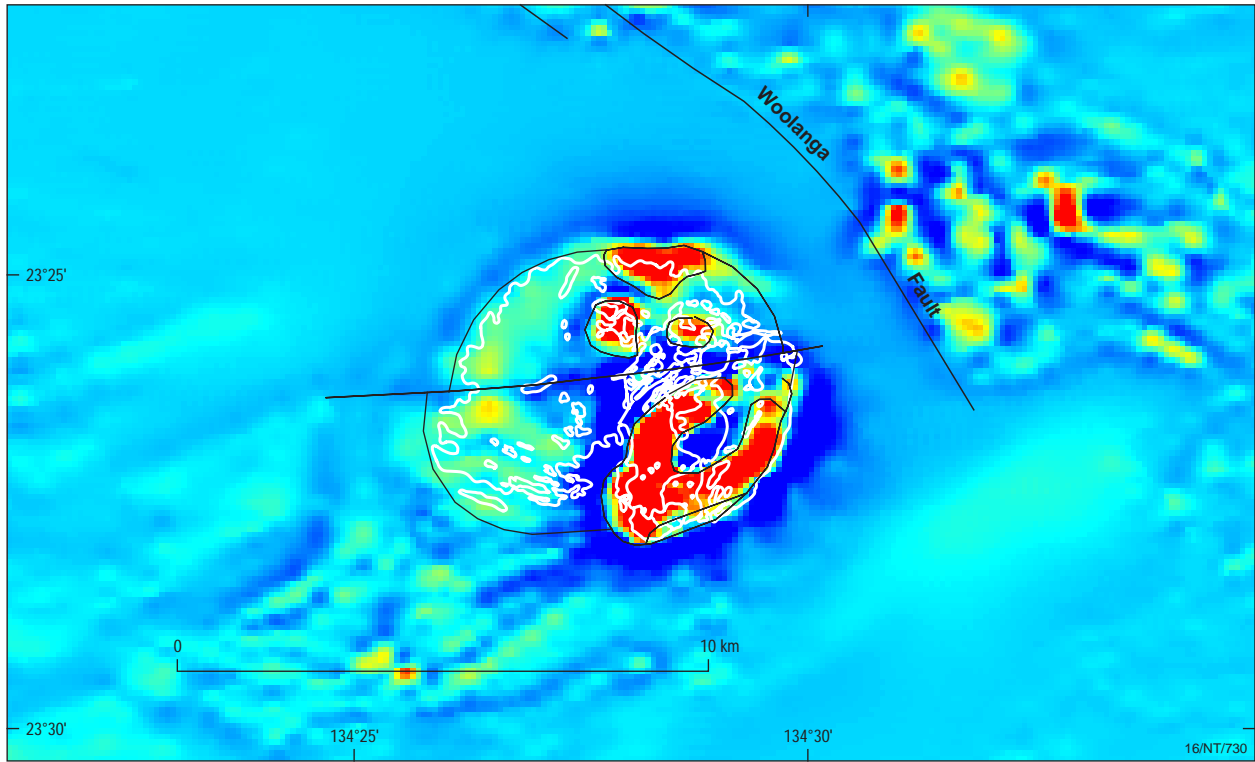
- Fault
- Boundary confident
- Mapped geology
- Gravity station locality

Figure 21c. Vertical gradient image of the Bouguer gravity field, including gravity station locations.



- Fault
- Boundary confident
- Mapped geology

Figure 21d. Grey scale image of the total magnetic intensity - reduced to pole.



Fault  
 Boundary confident  
 Mapped geology

Figure 21e. Pseudo colour image of the vertical gradient applied to the total magnetic intensity (reduced to pole).

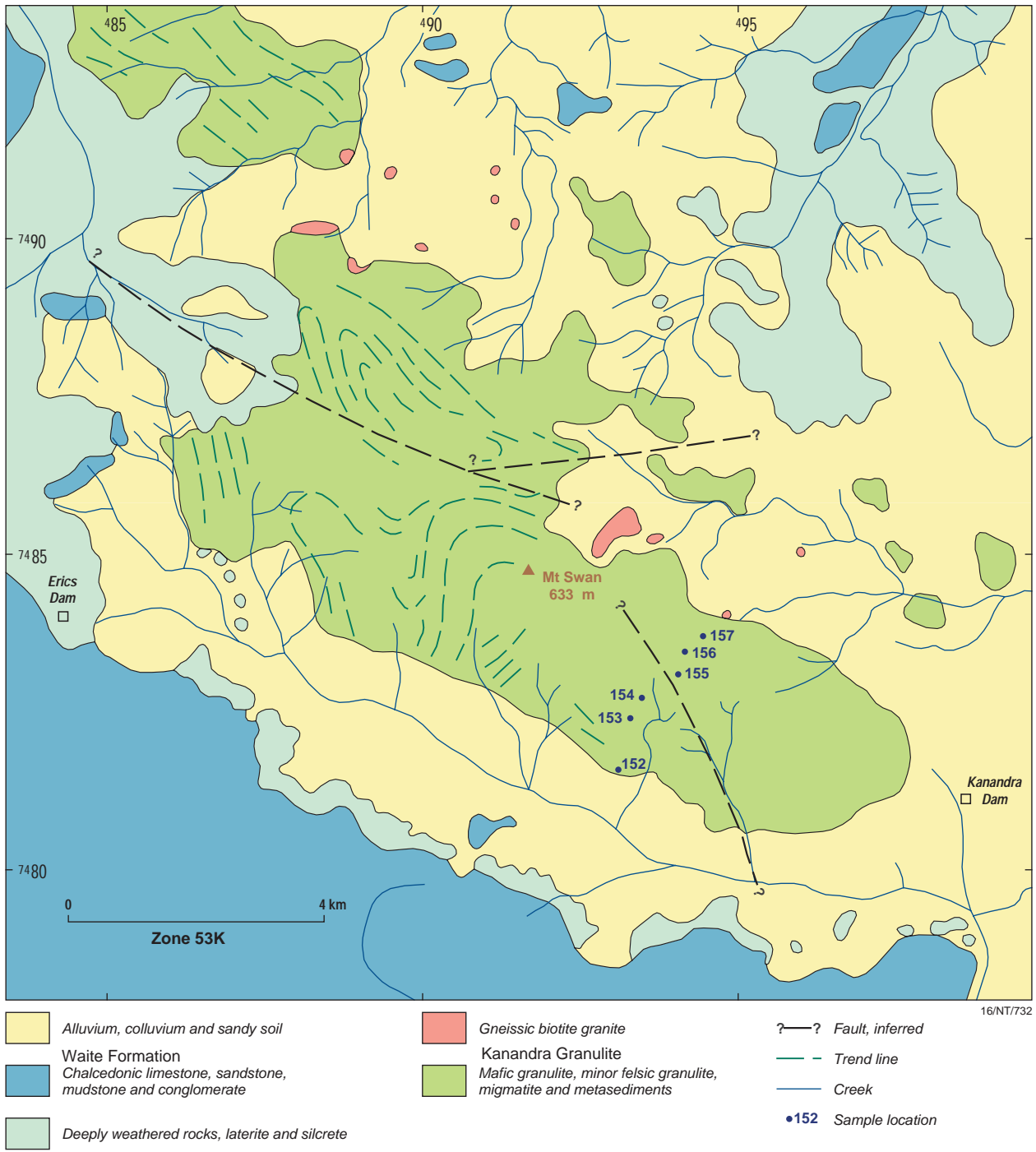


Figure 22a. Geological map of the Kanandra Granulite (modified after Shaw et al., 1975).

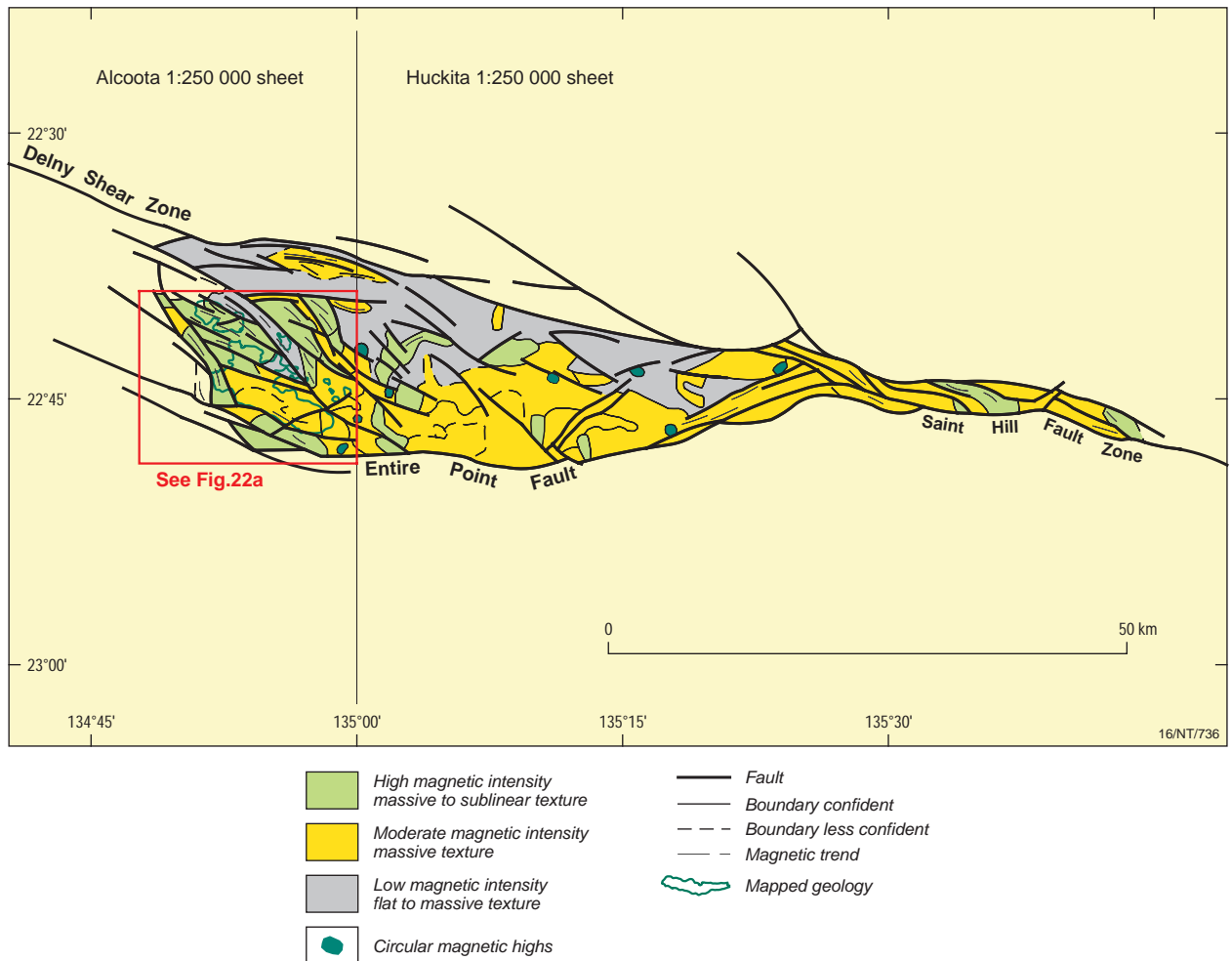


Figure 22b. Solid geology interpretation of the Kanandra Granulite showing the total interpreted sub-cropping extent. The region shown in the geological map (Fig.22a) is also displayed.

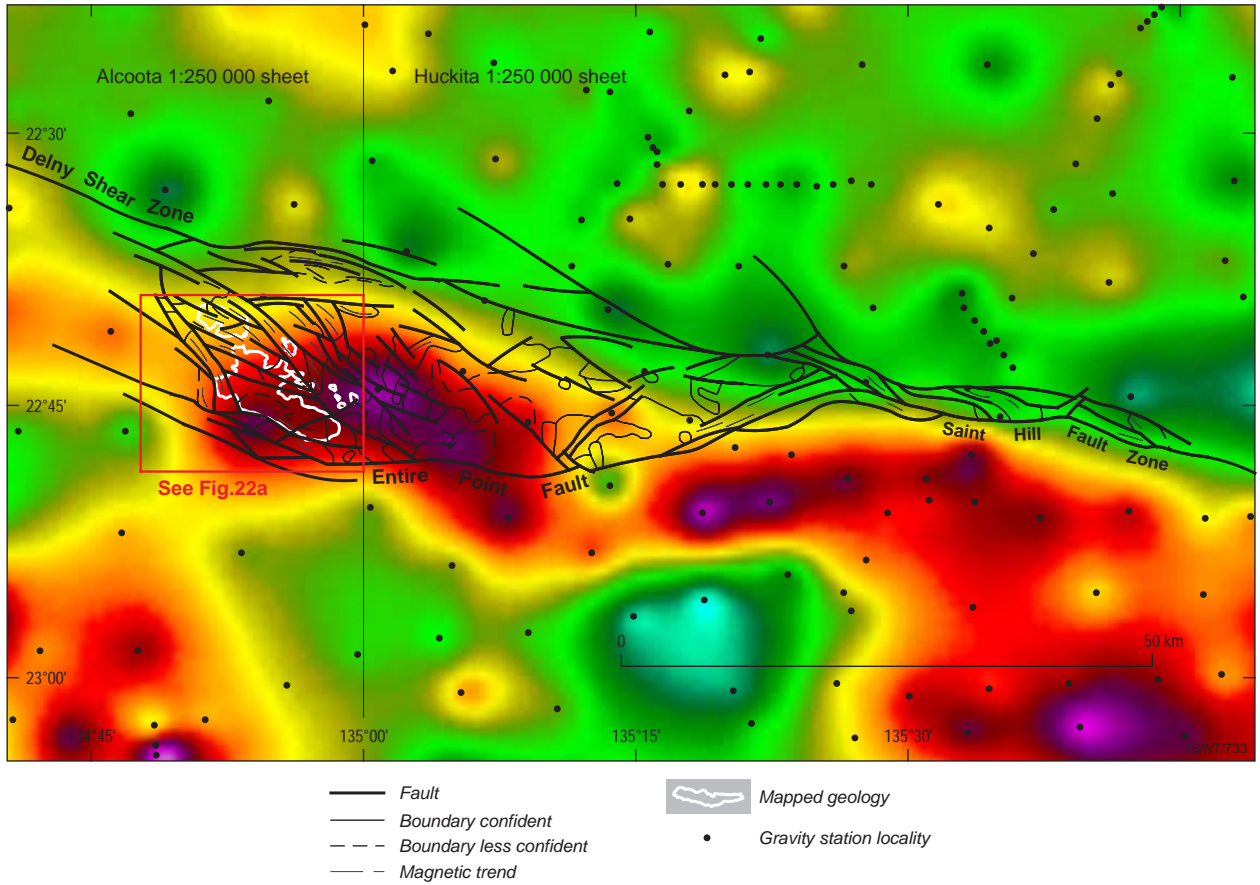
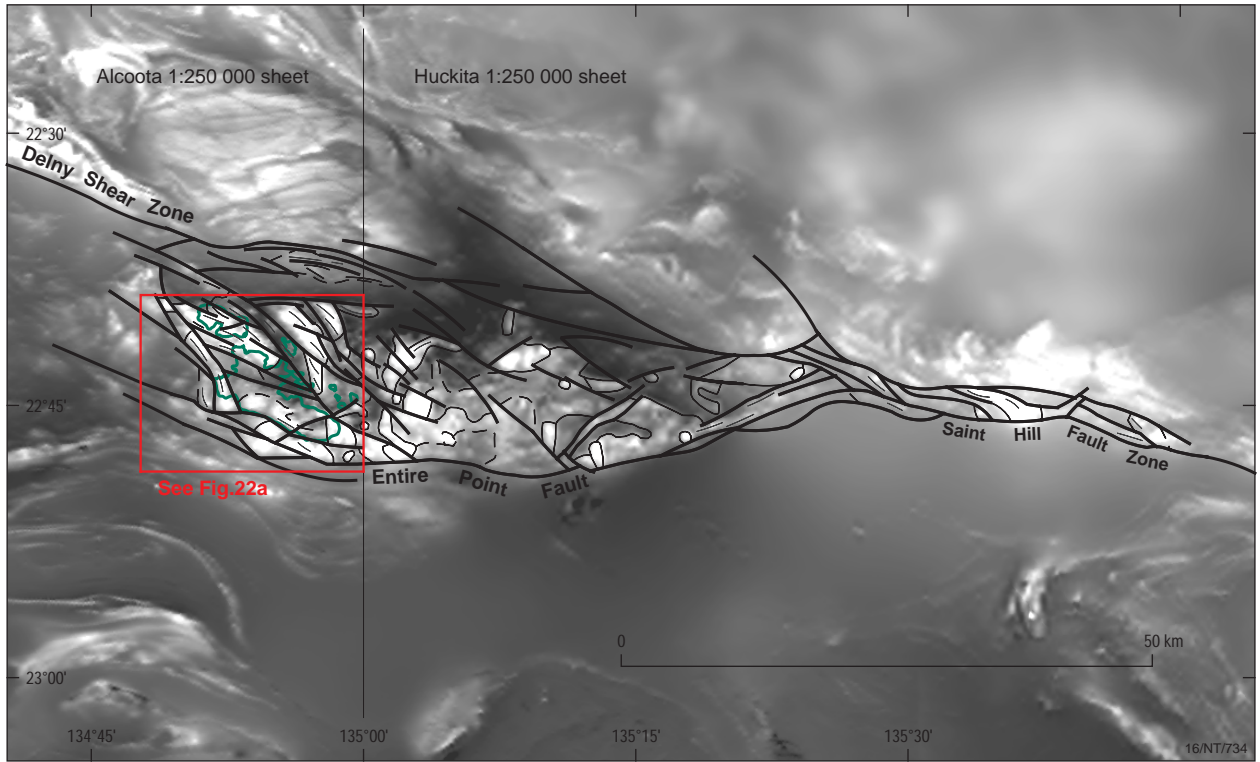


Figure 22c. Vertical gradient image of the Bouguer gravity field, including gravity station locations.



- Fault
- Boundary confident
- - - Boundary less confident
- - - Magnetic trend
- Mapped geology

Figure 22d. Grey scale image of the total magnetic intensity - reduced to pole.

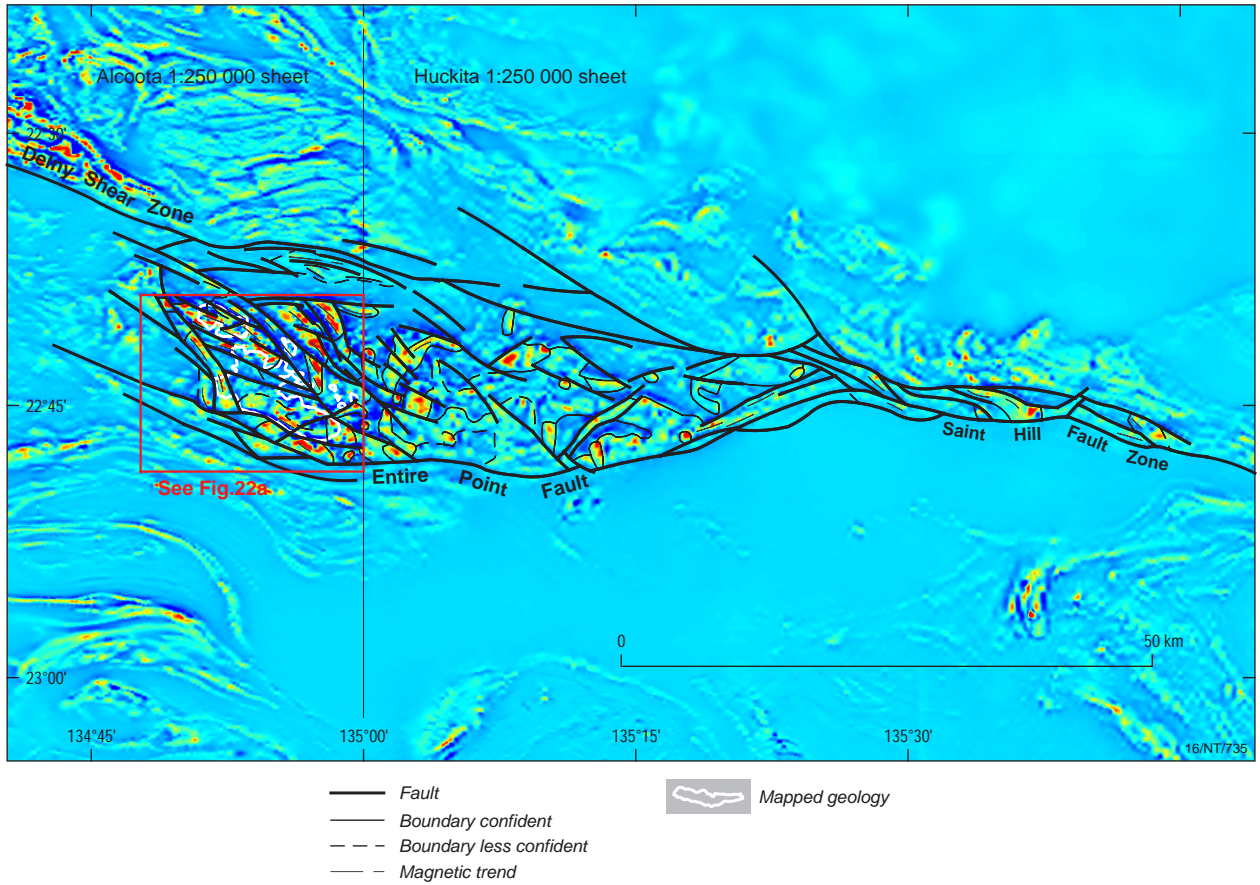


Figure 22e. Pseudo colour image of the vertical gradient applied to the total magnetic intensity (reduced to pole).

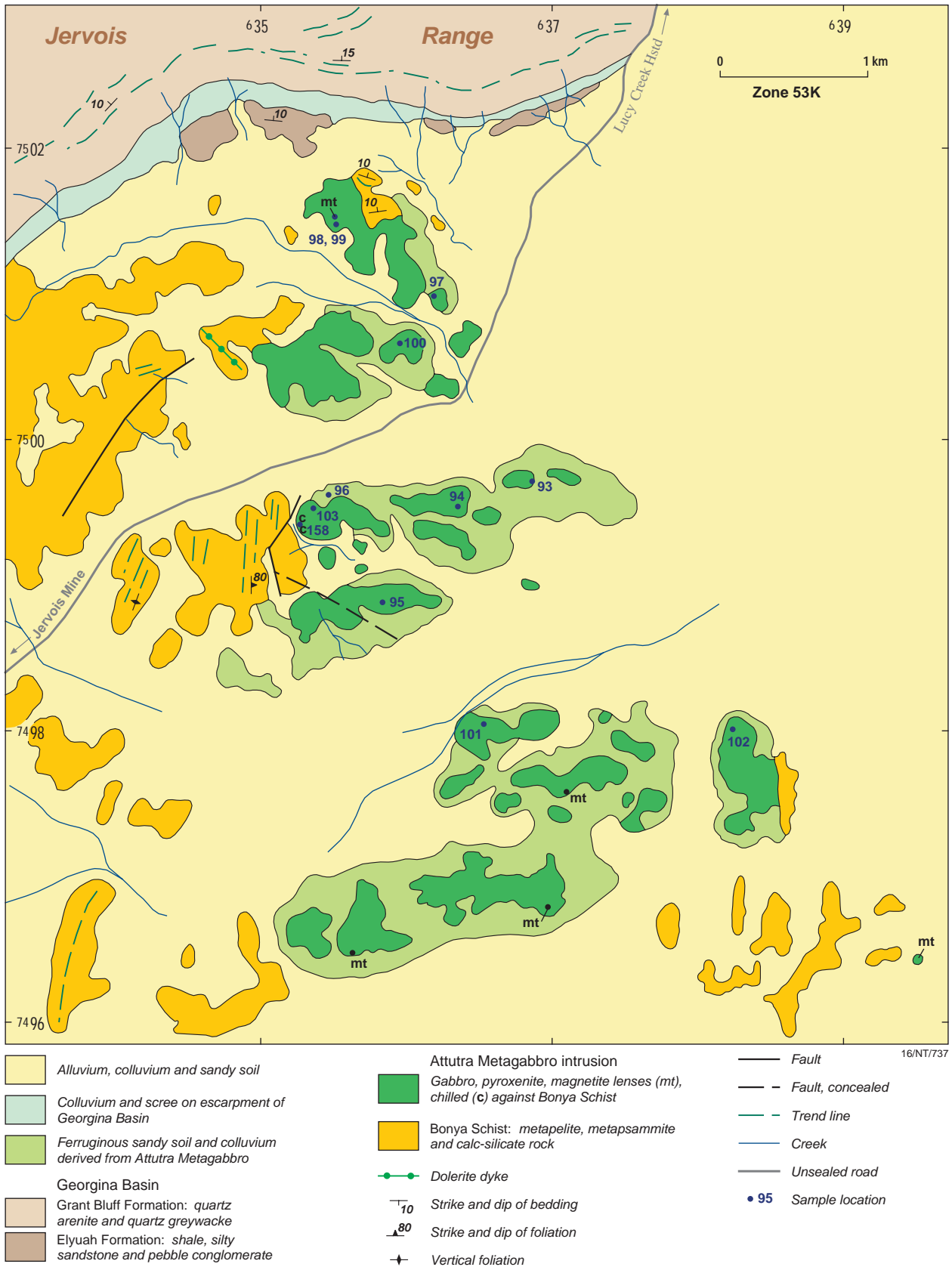


Figure 23a. Geological map of the Attutra Metagabbro (modified after Freeman, 1986).

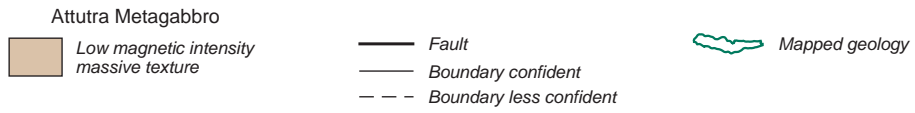
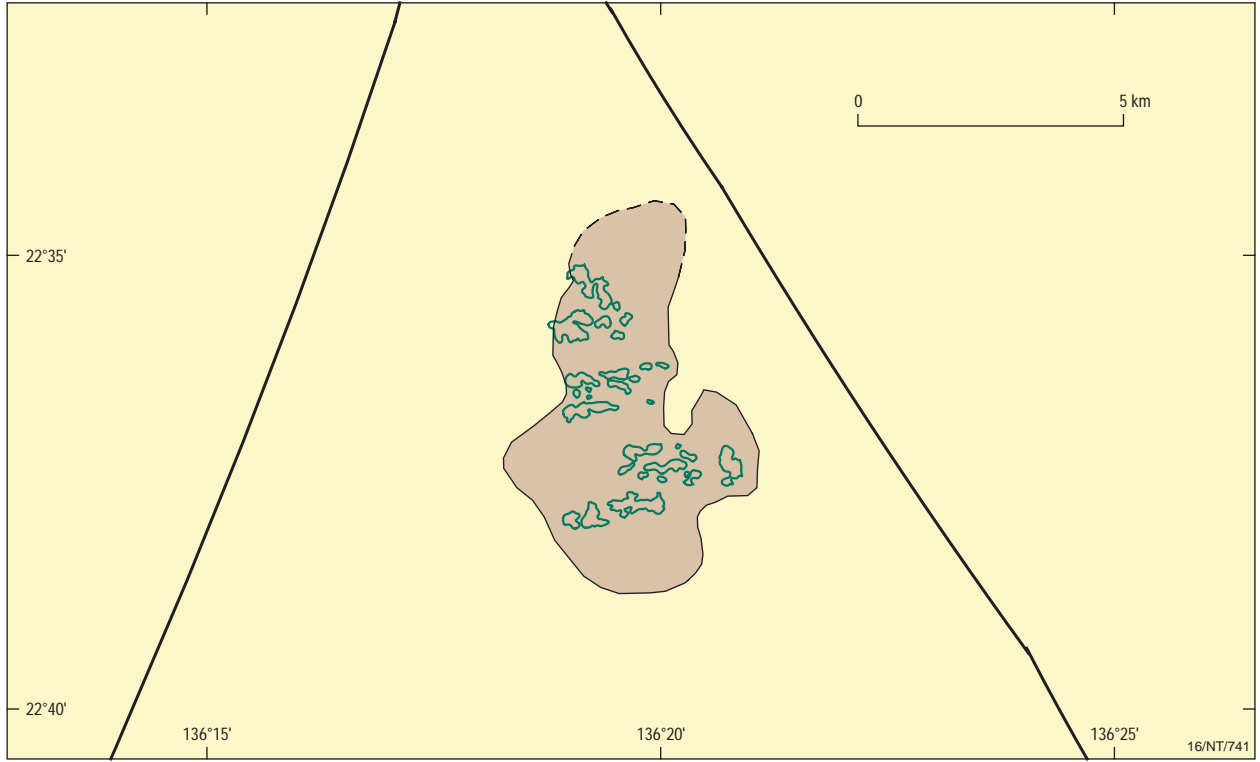


Figure 23b. Solid geology interpretation of the Attutra Metagabbro intrusion.

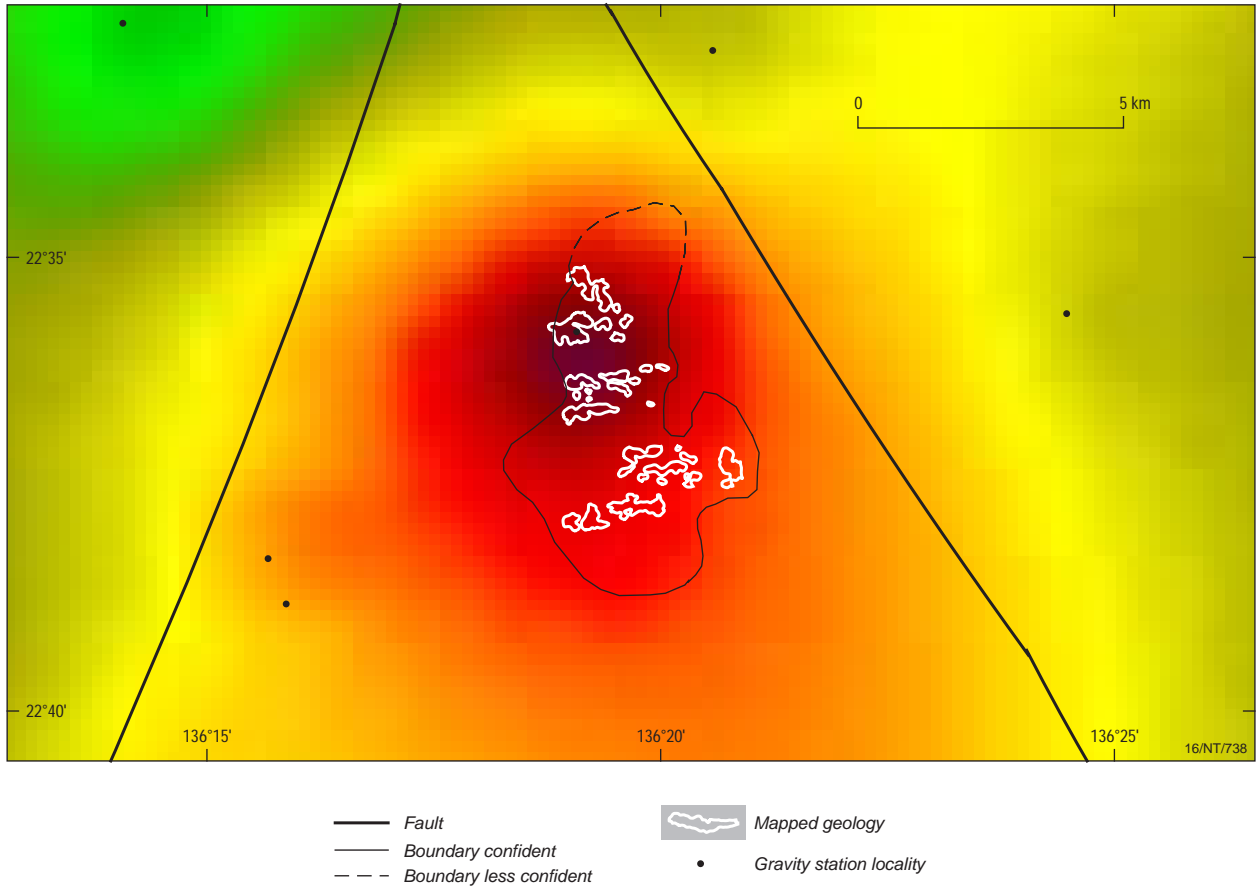


Figure 23c. Vertical gradient image of the Bouguer gravity field, including gravity station locations.

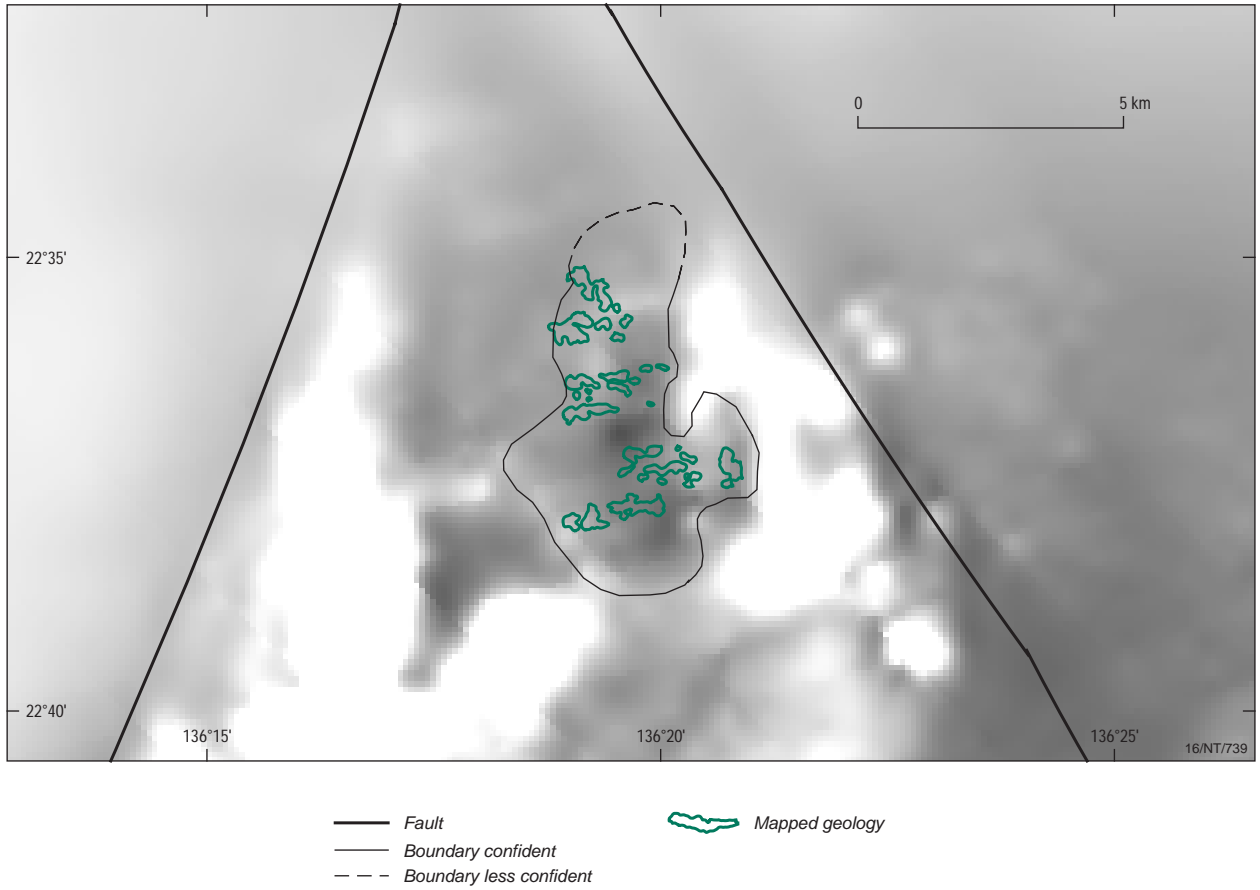


Figure 23d. Grey scale image of the total magnetic intensity - reduced to pole.

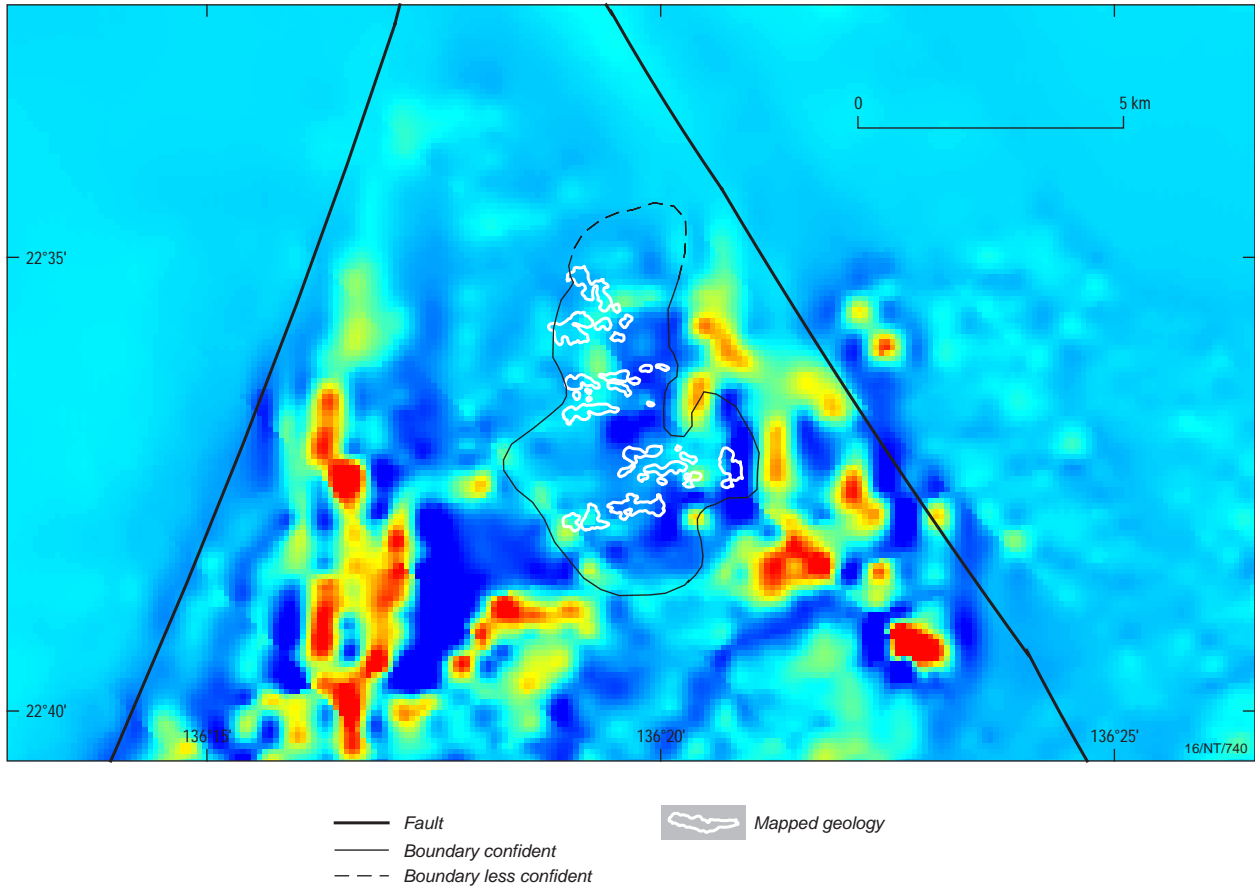


Figure 23e. Pseudo colour image of the vertical gradient applied to the total magnetic intensity (reduced to pole).

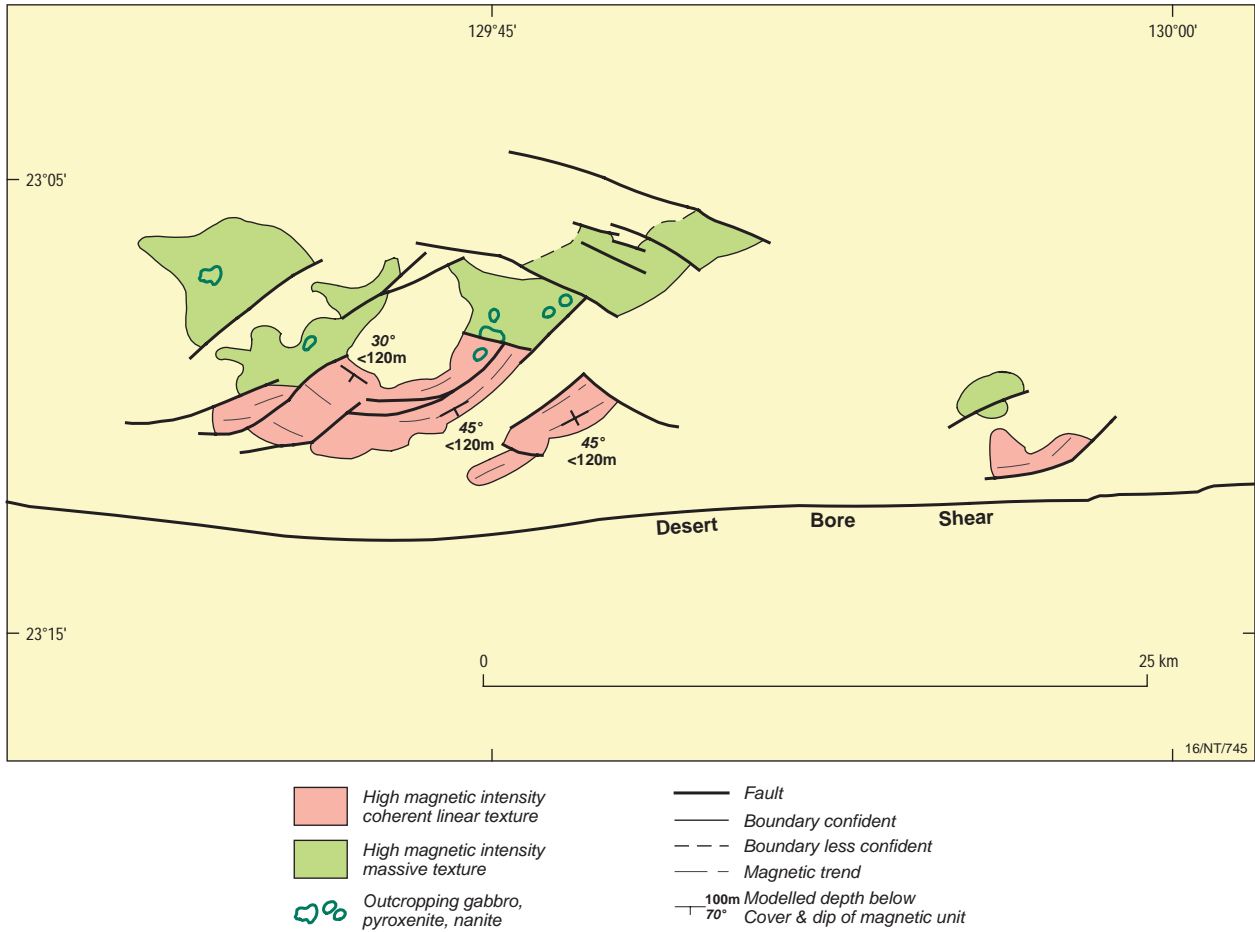


Figure 24a. Solid geology of the western mafic intrusions, showing total sub-cropping extent of the interpreted intrusions. The results of magnetic modelling defining depth of alluvial cover and dip and strike of macroscopic layering is also shown.