

Figure 24b. Vertical gradient image of the Bouguer gravity field, including gravity station locations.

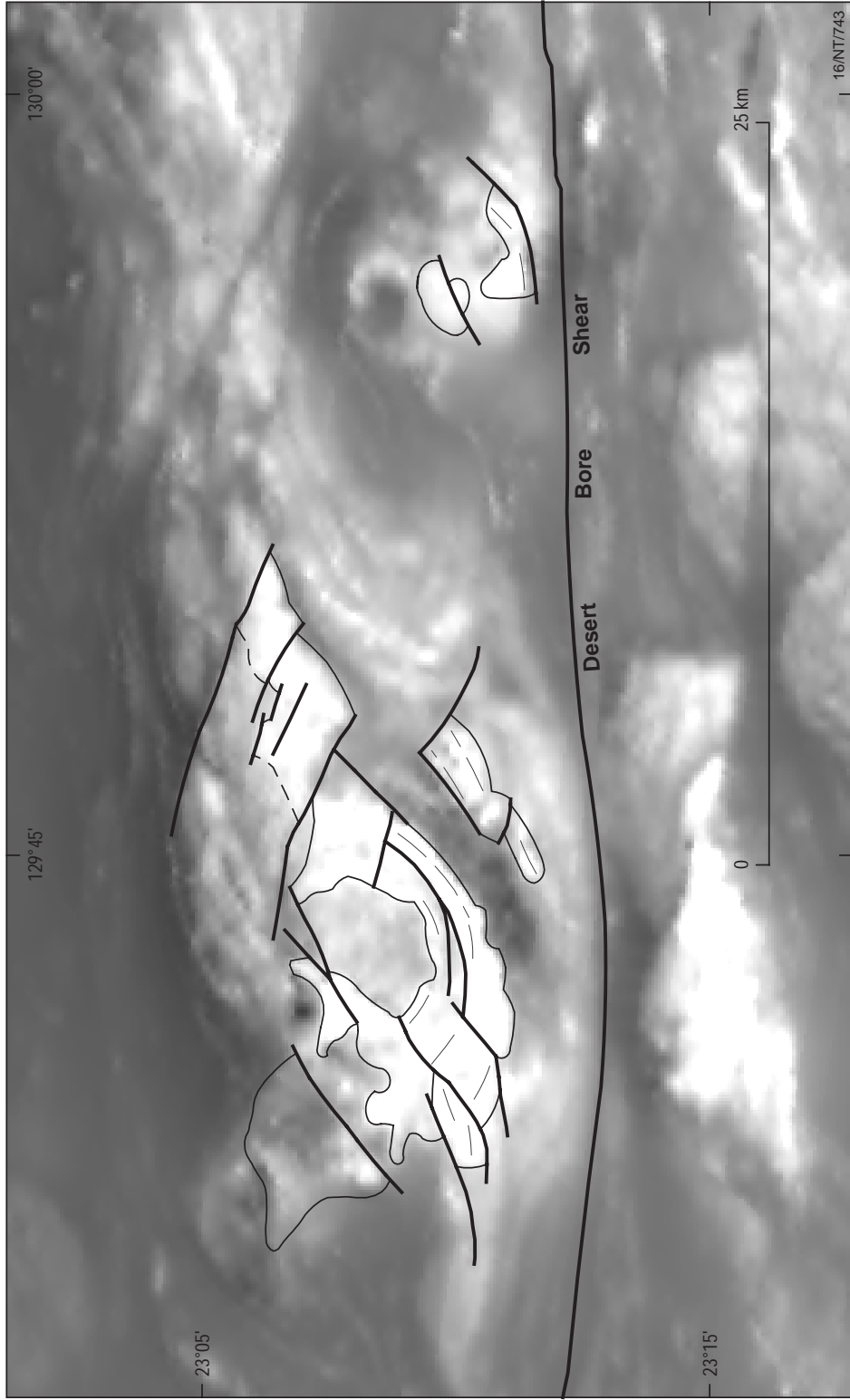


Figure 24c. Grey scale image of the total magnetic intensity - reduced to pole.

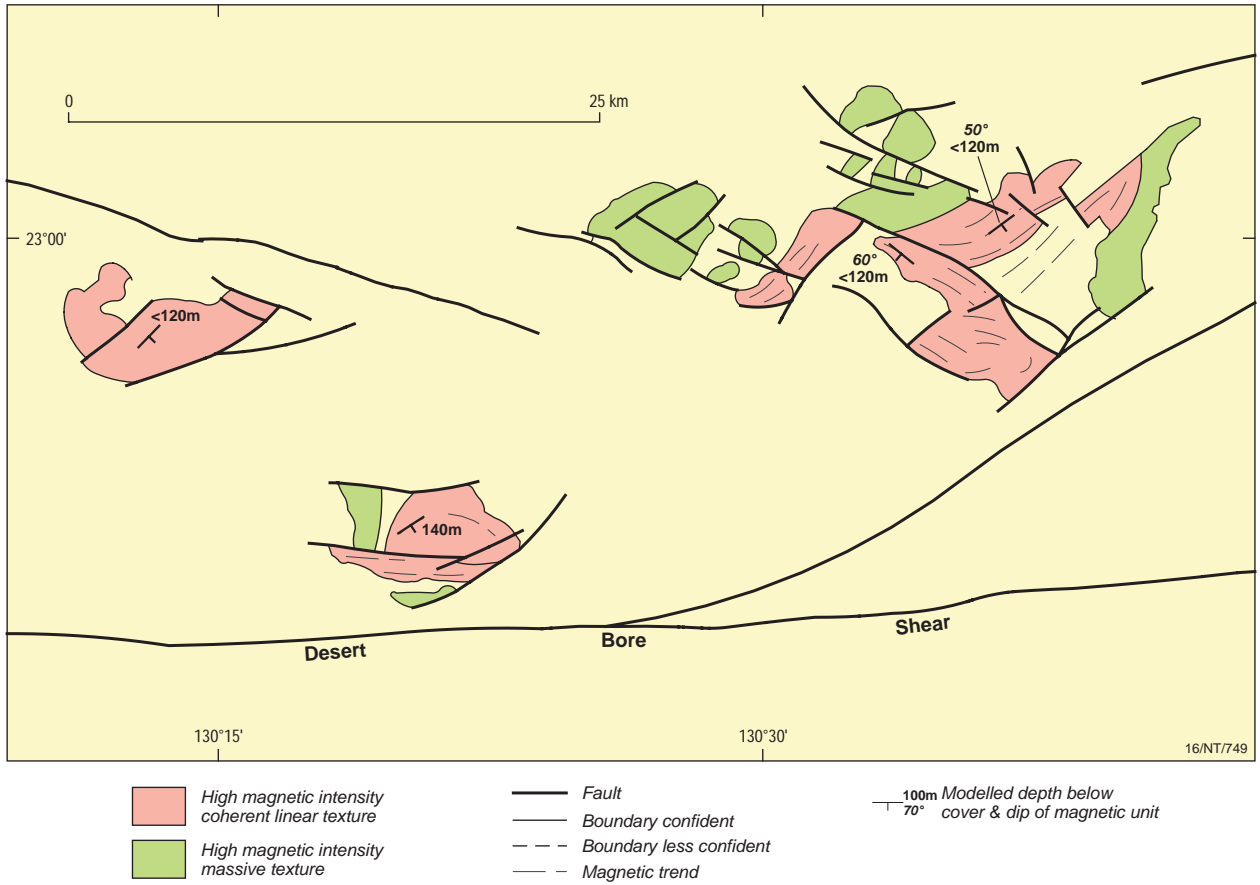


Figure 25a. Solid geology interpretation of the central mafic intrusions, showing total sub-cropping extent of the intrusions. The results of magnetic modelling, defining depth of alluvial cover and dip and strike of macroscopic layering is also shown.

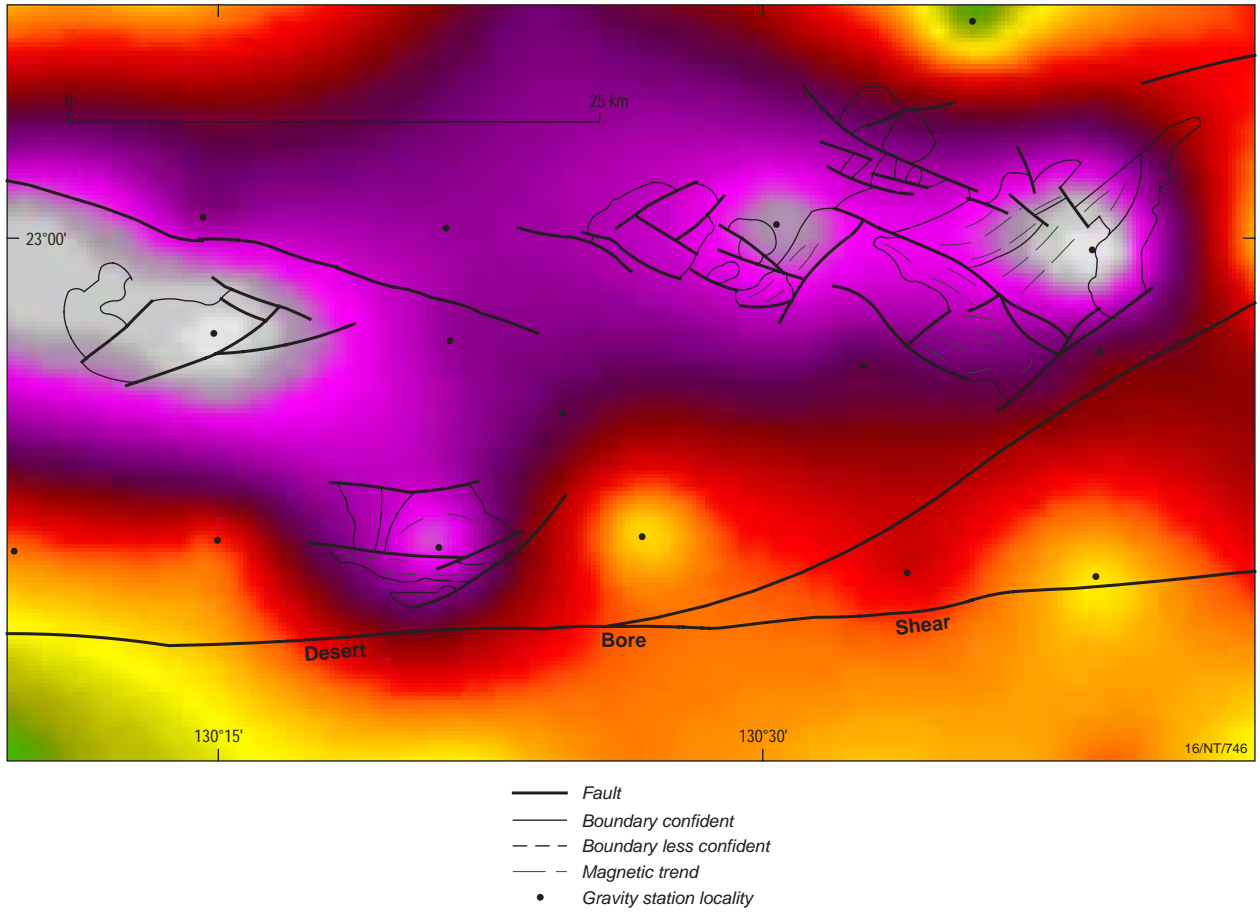


Figure 25b. Vertical gradient image of the Bouguer gravity field, including gravity station locations.

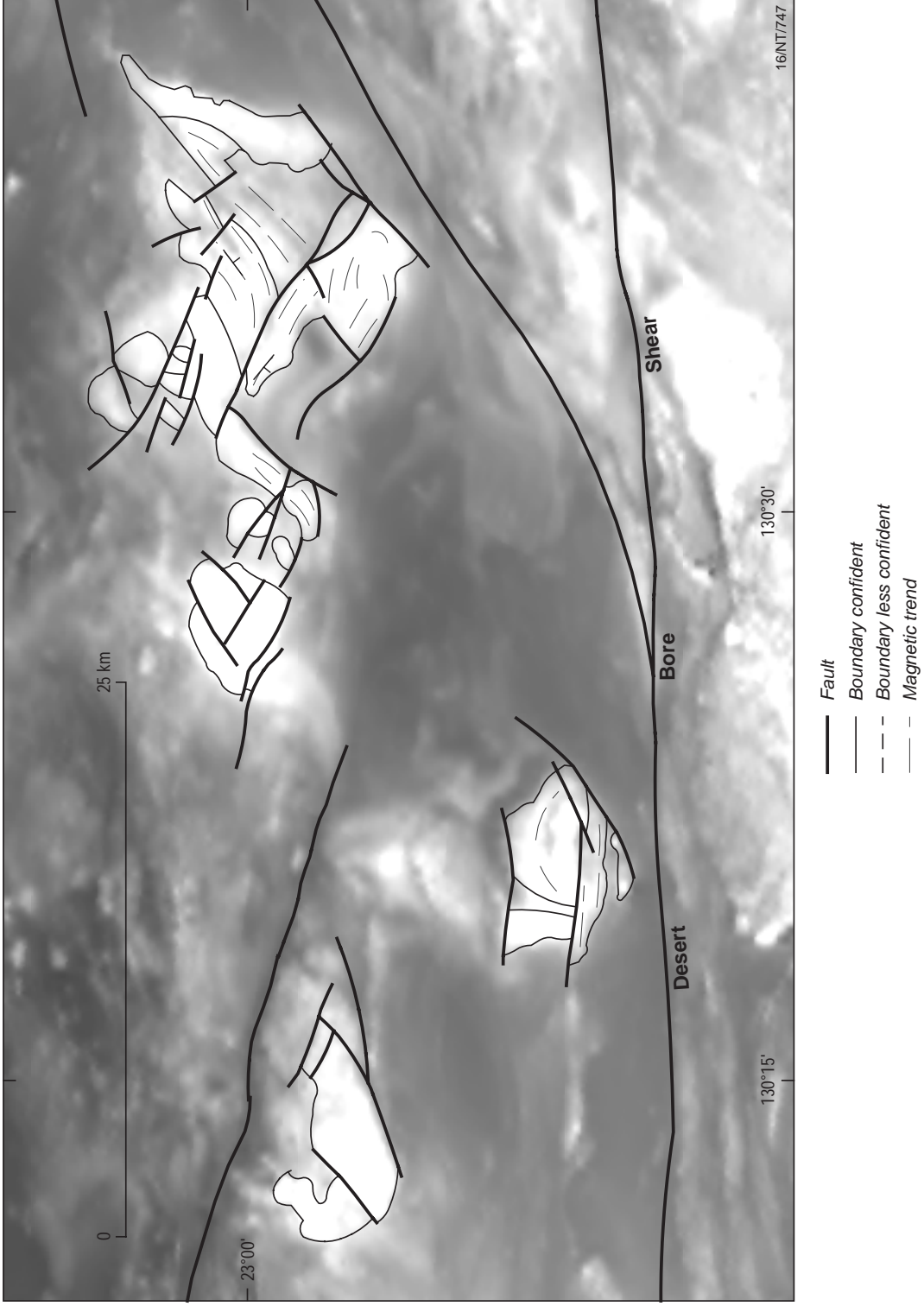


Figure 25c. Grey scale image of the total magnetic intensity - reduced to pole.

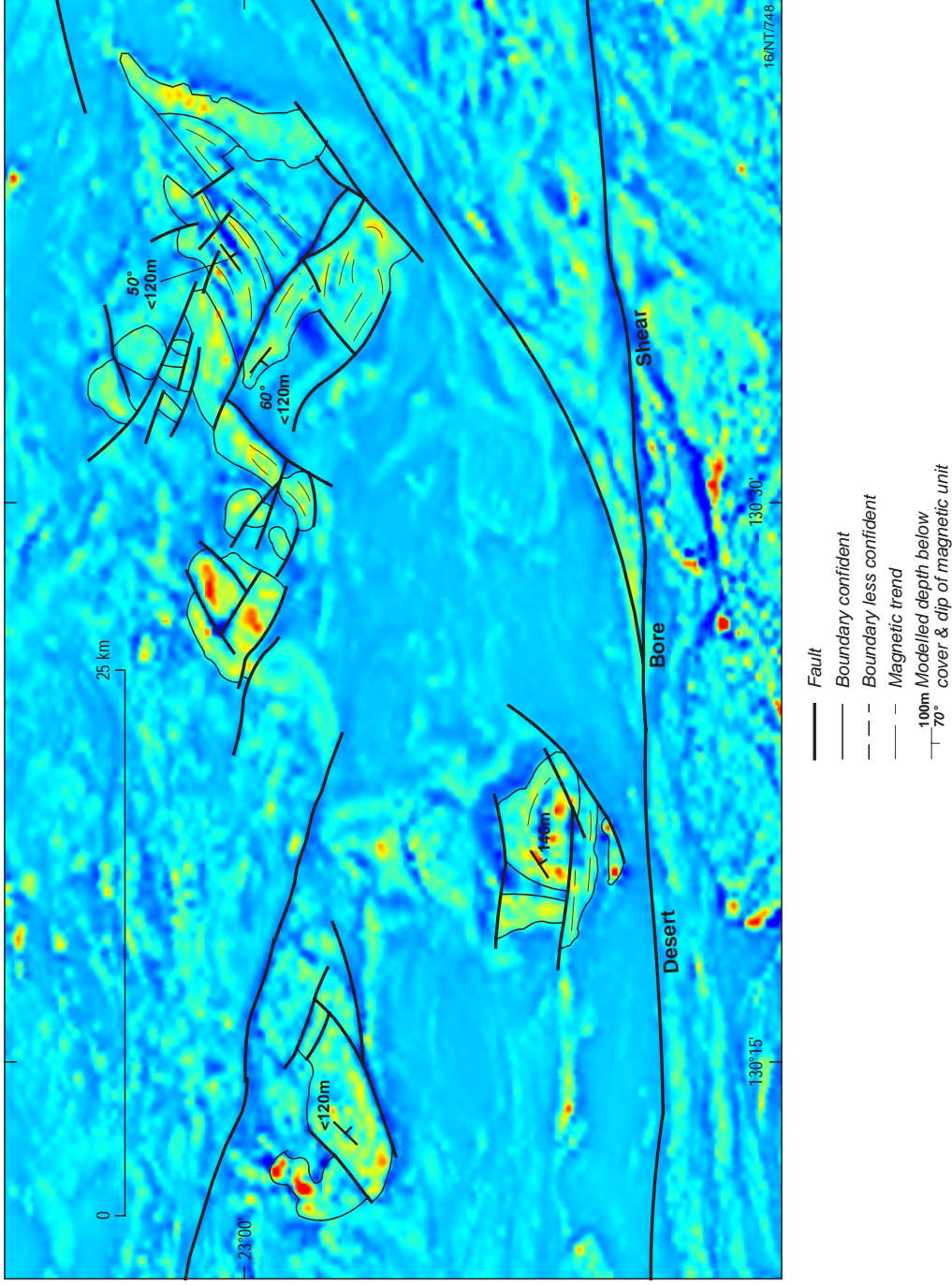


Figure 25d. Pseudo colour image of the vertical gradient applied to the total magnetic intensity (reduced to pole).

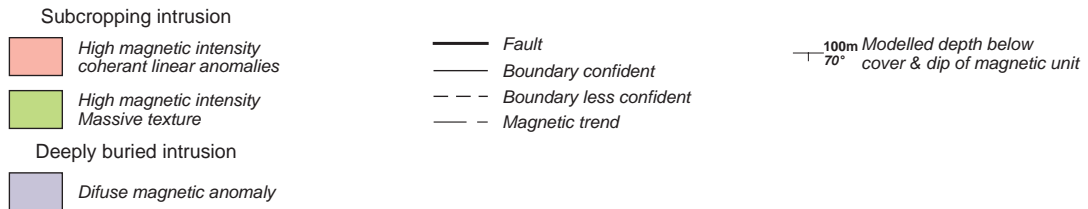
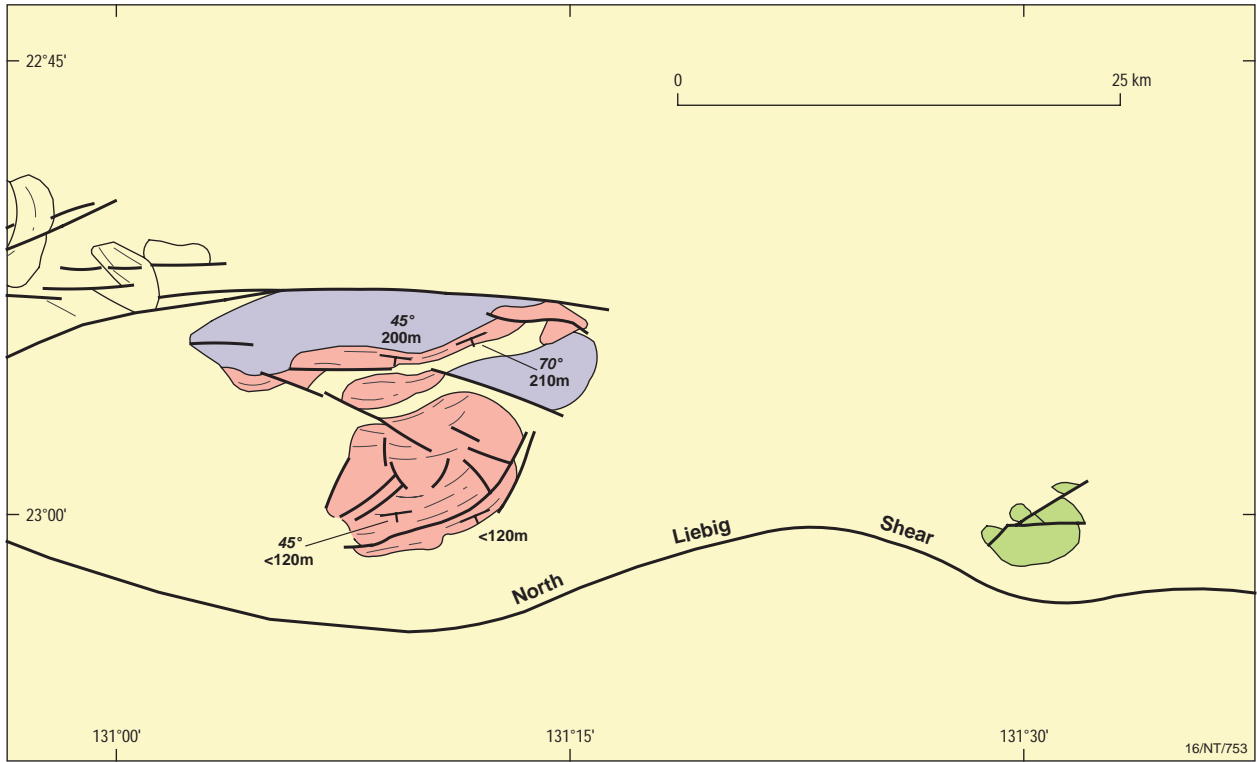
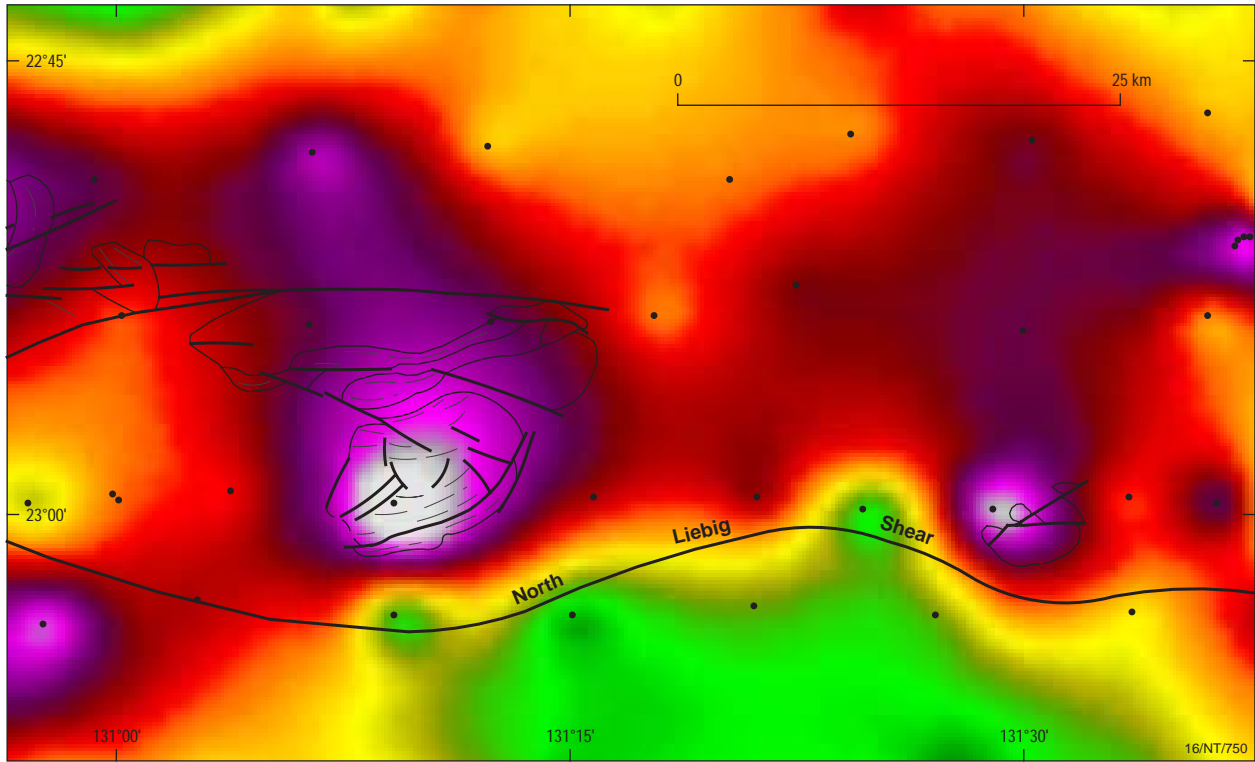
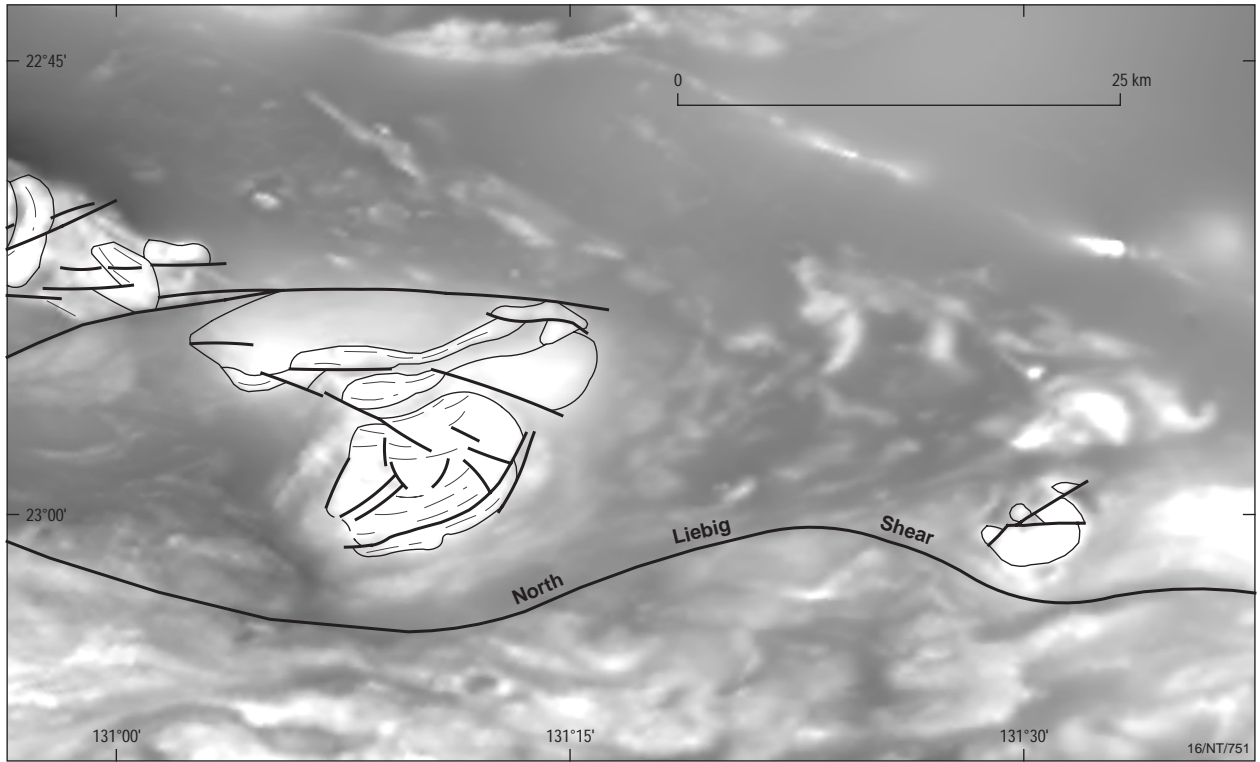


Figure 26a. Solid geology interpretation of the eastern mafic intrusions, showing the total subcropping extent and the location of deeply buried intrusions. The results of magnetic modelling defining depth of alluvial cover and dip and strike of macroscopic layering is also shown.



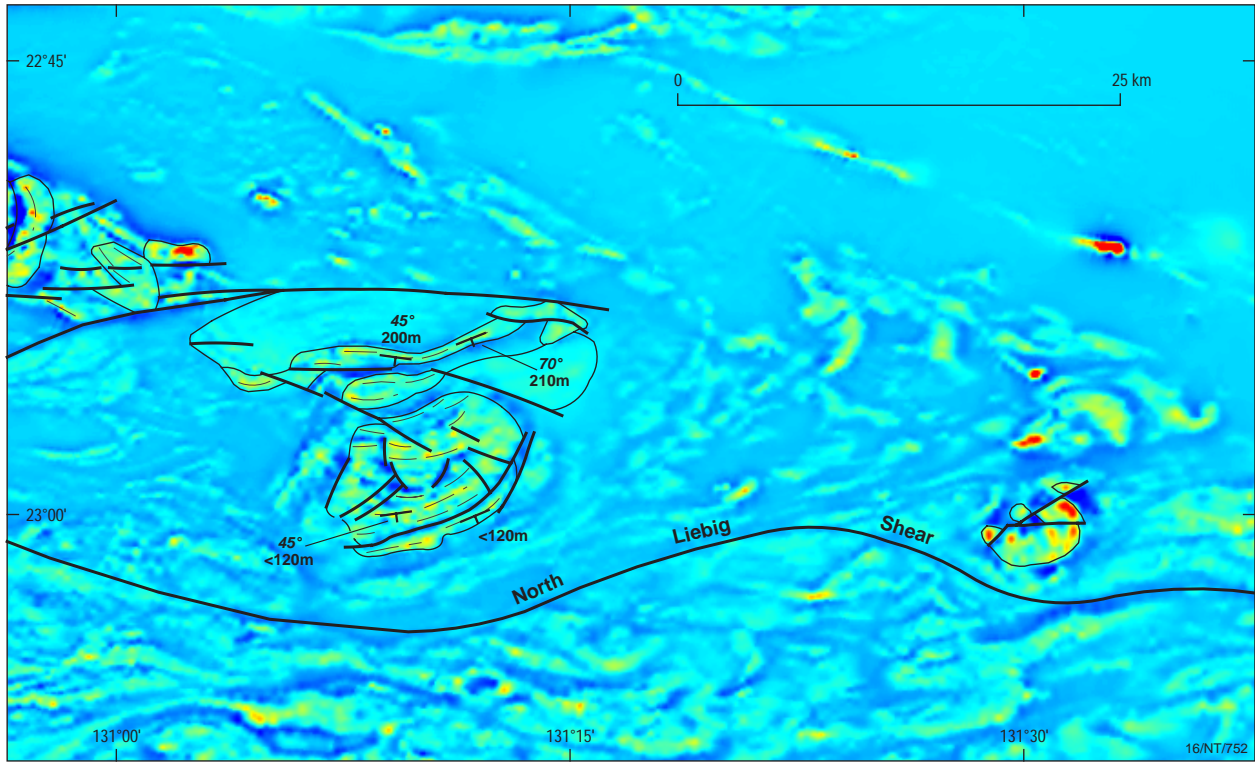
- Fault
- Boundary confident
- - - Boundary less confident
- - - Magnetic trend
- Gravity station locality

Figure 26b. Vertical gradient image of the Bouguer gravity field, including gravity station locations.



- Fault
- Boundary confident
- - - Boundary less confident
- - - Magnetic trend

Figure 26c. Grey scale image of the total magnetic intensity - reduced to pole.



- Fault
- Boundary confident
- - - Boundary less confident
- - - Magnetic trend
- 100m Gravity station locality
- 70° cover & dip of magnetic unit

Figure 26d. Pseudo colour image of the vertical gradient applied to the total magnetic intensity (reduced to pole).

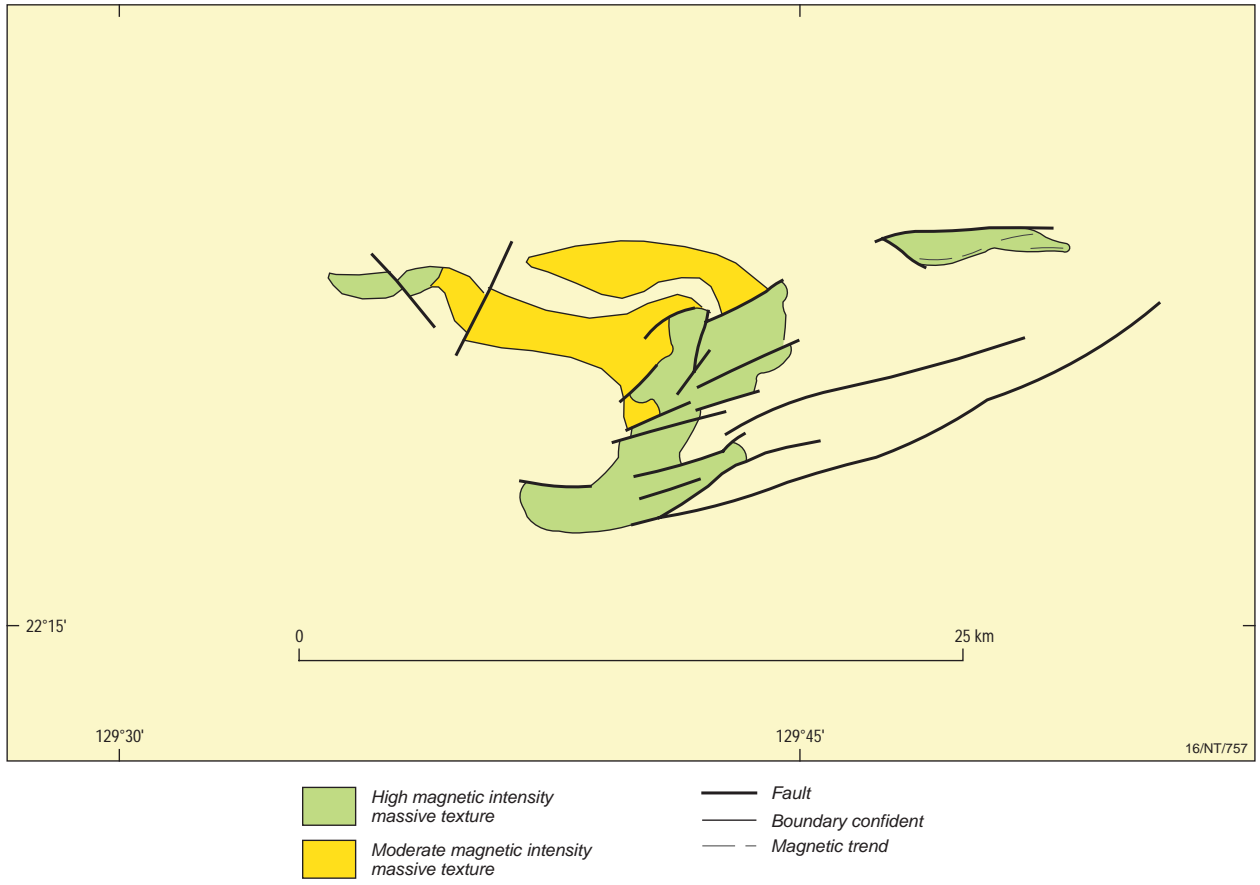
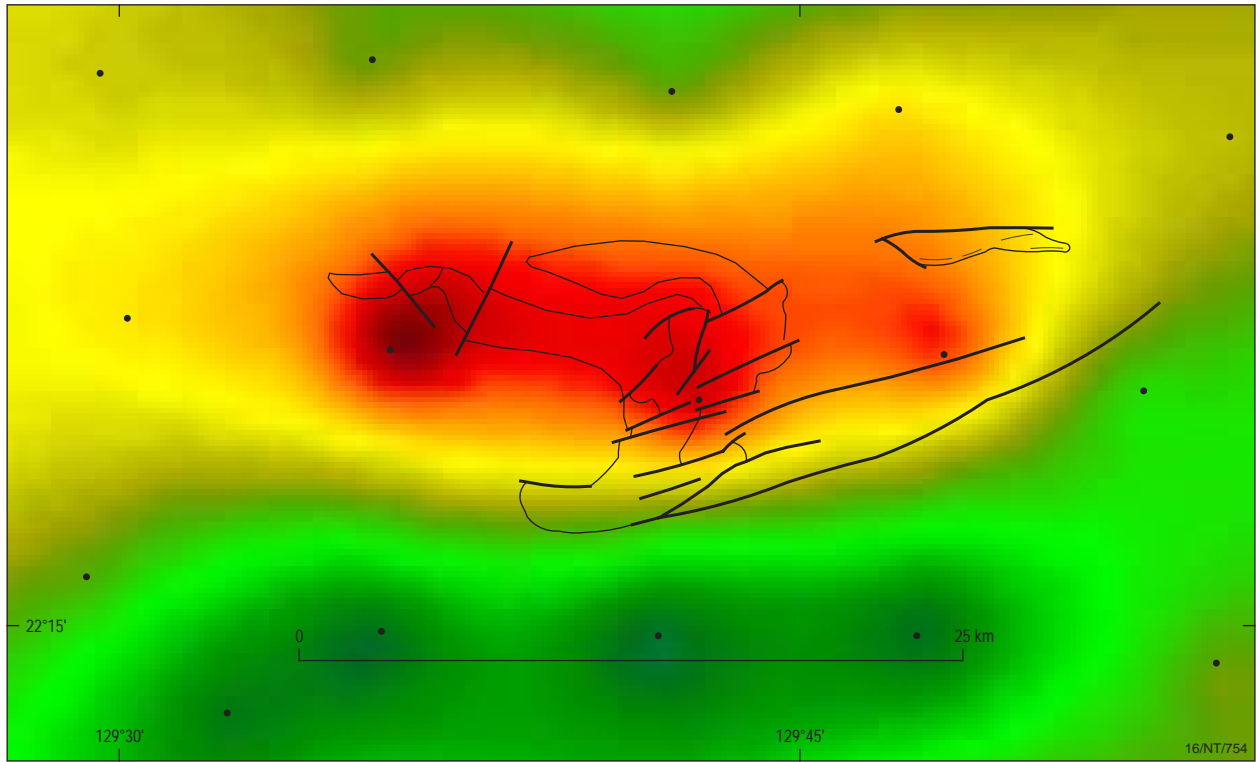


Figure 27a. Solid geology interpretation of the McEwin Hills mafic body, showing total sub-cropping extent of the intrusion.



- Fault
- - - Boundary confident
- · · Magnetic trend
- Gravity station locality

Figure 27b. Vertical gradient image of the Bouguer gravity field, including gravity station locations.

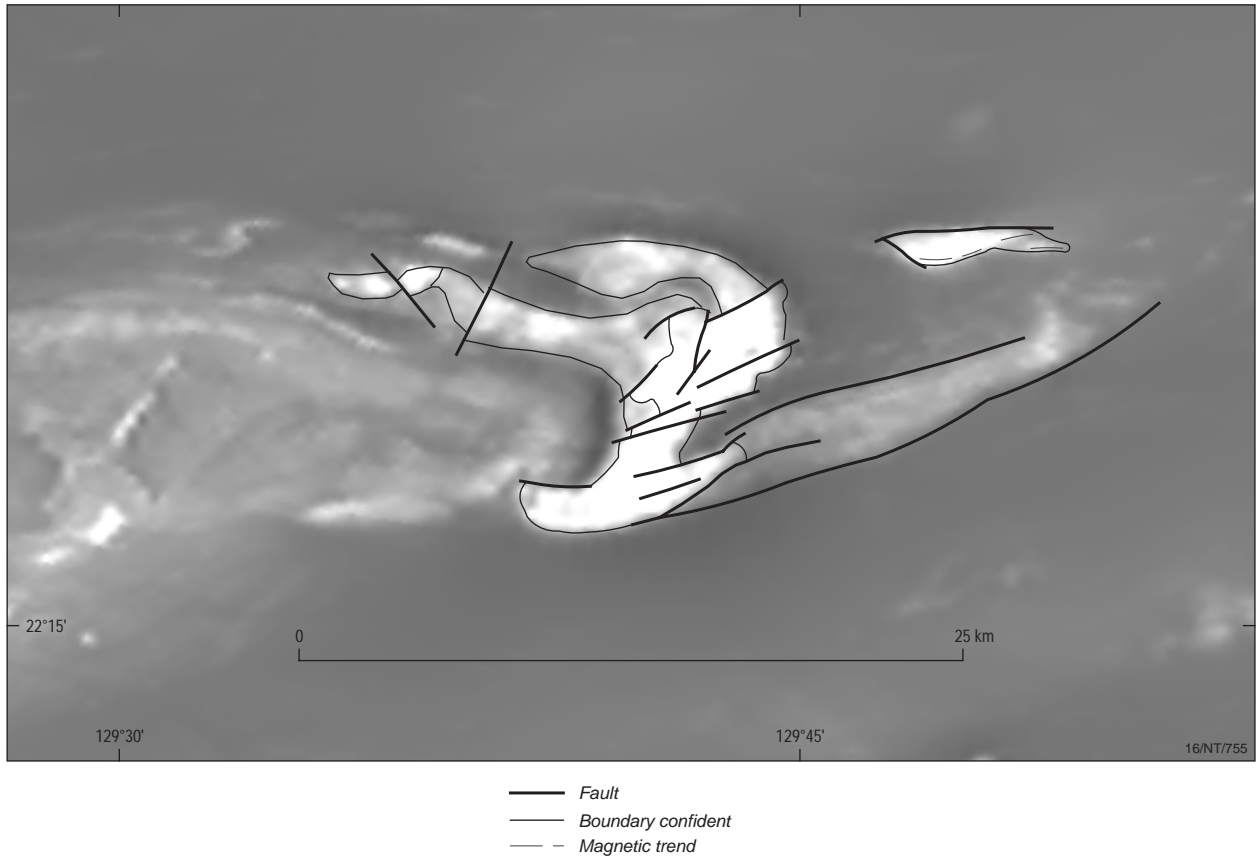


Figure 27c. Grey scale image of the total magnetic intensity - reduced to pole.

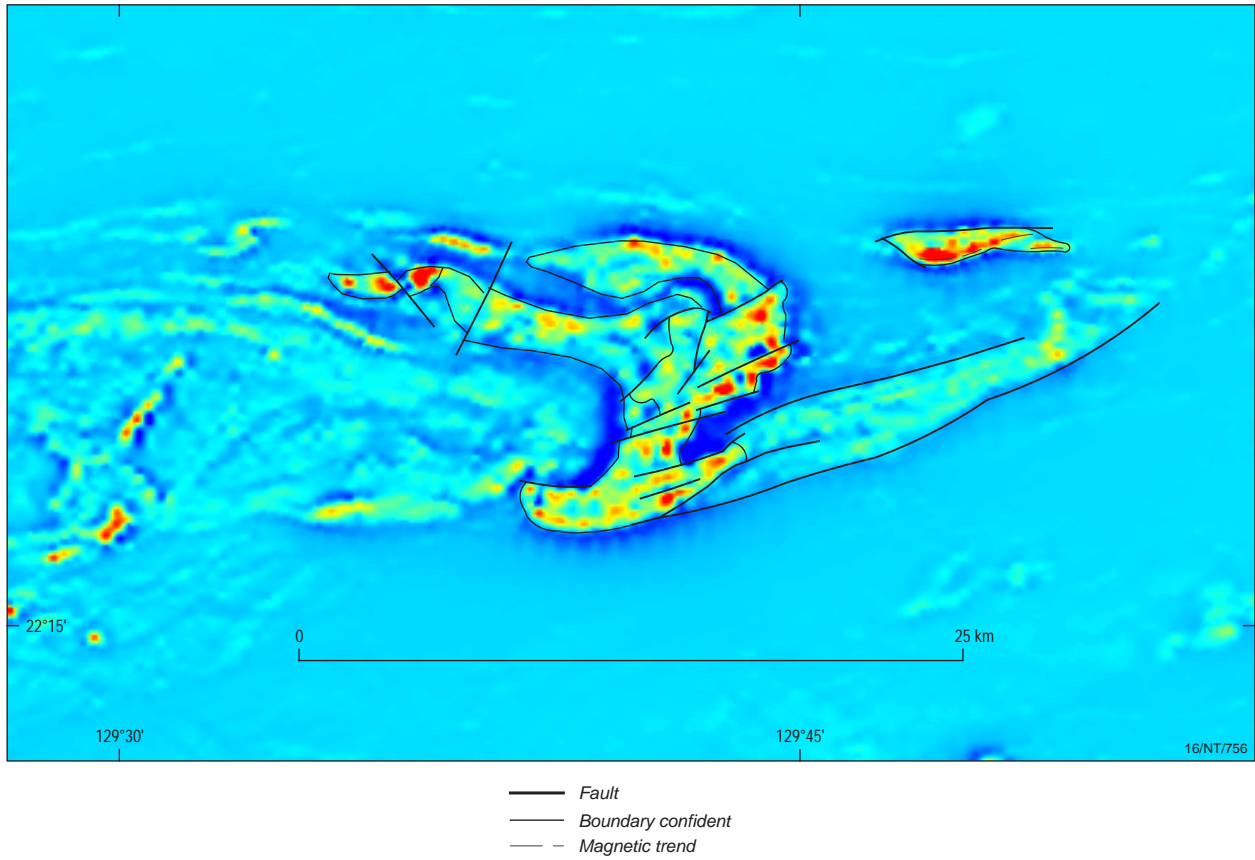


Figure 27d. Pseudo colour image of the vertical gradient applied to the total magnetic intensity (reduced to pole).

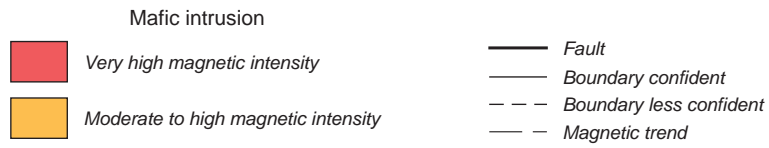
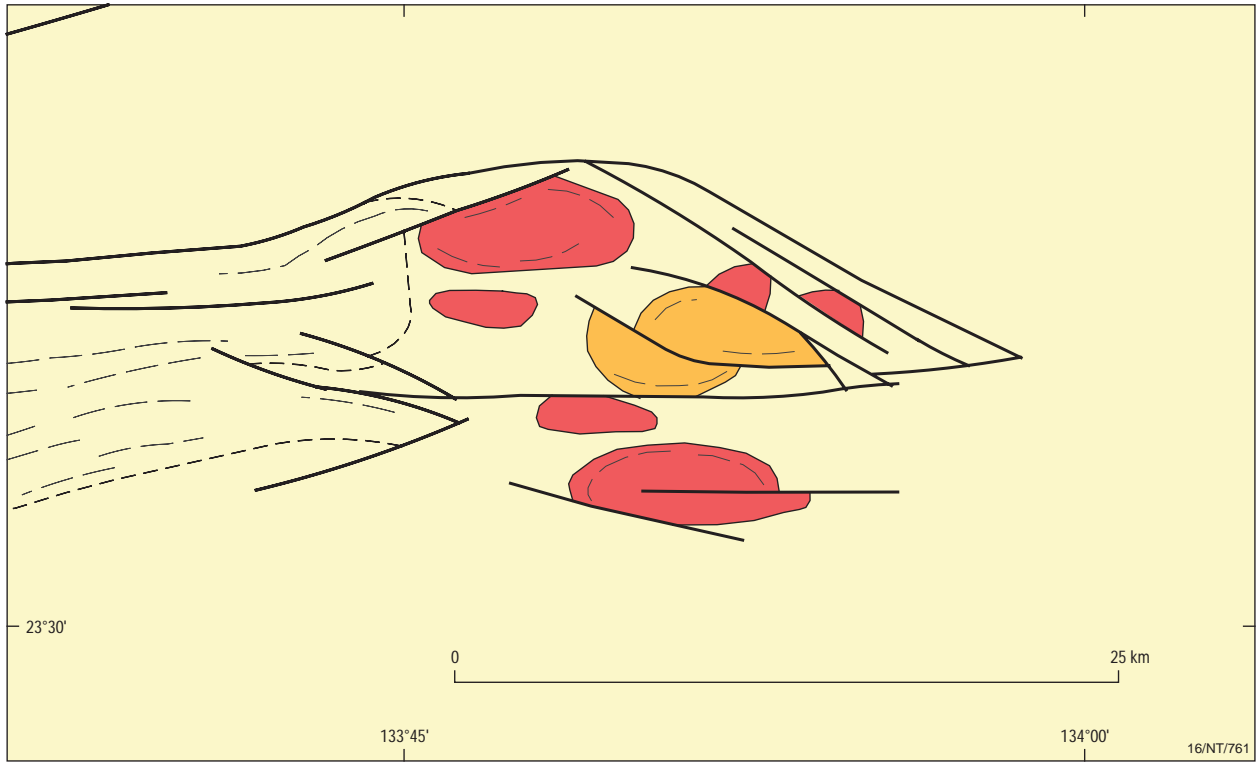
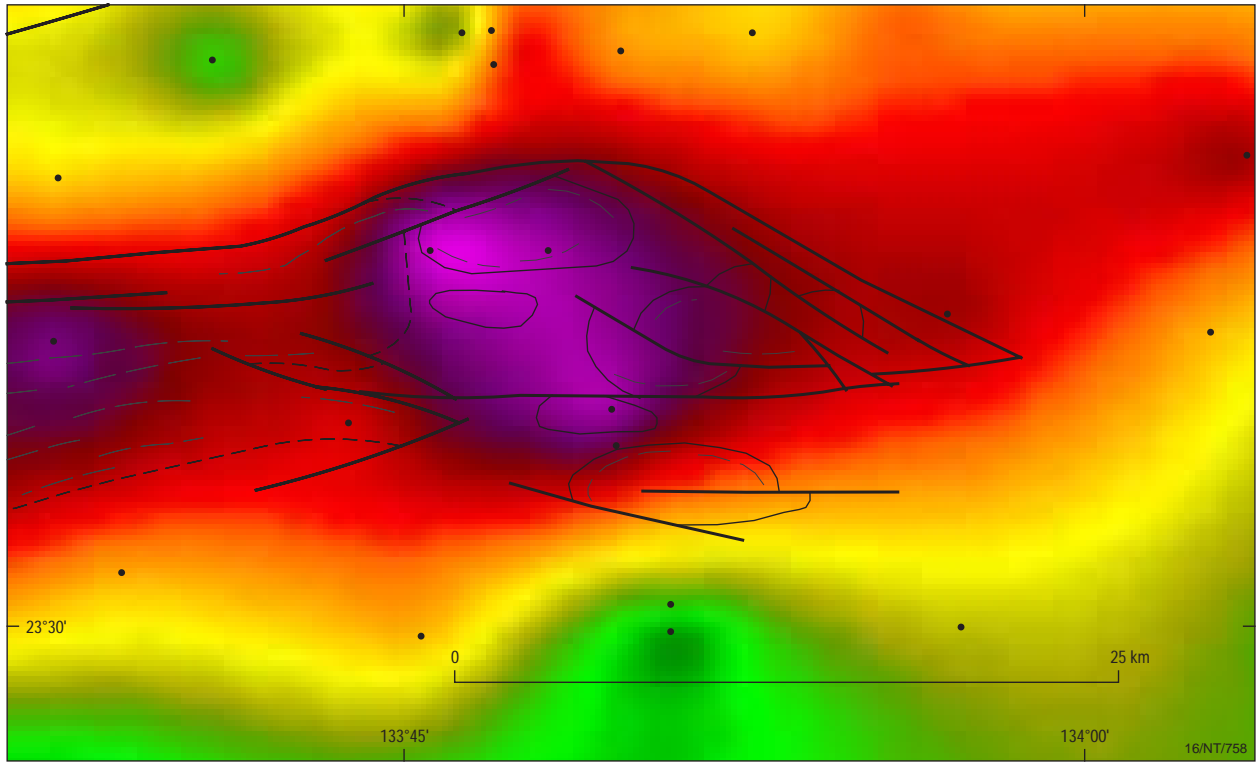
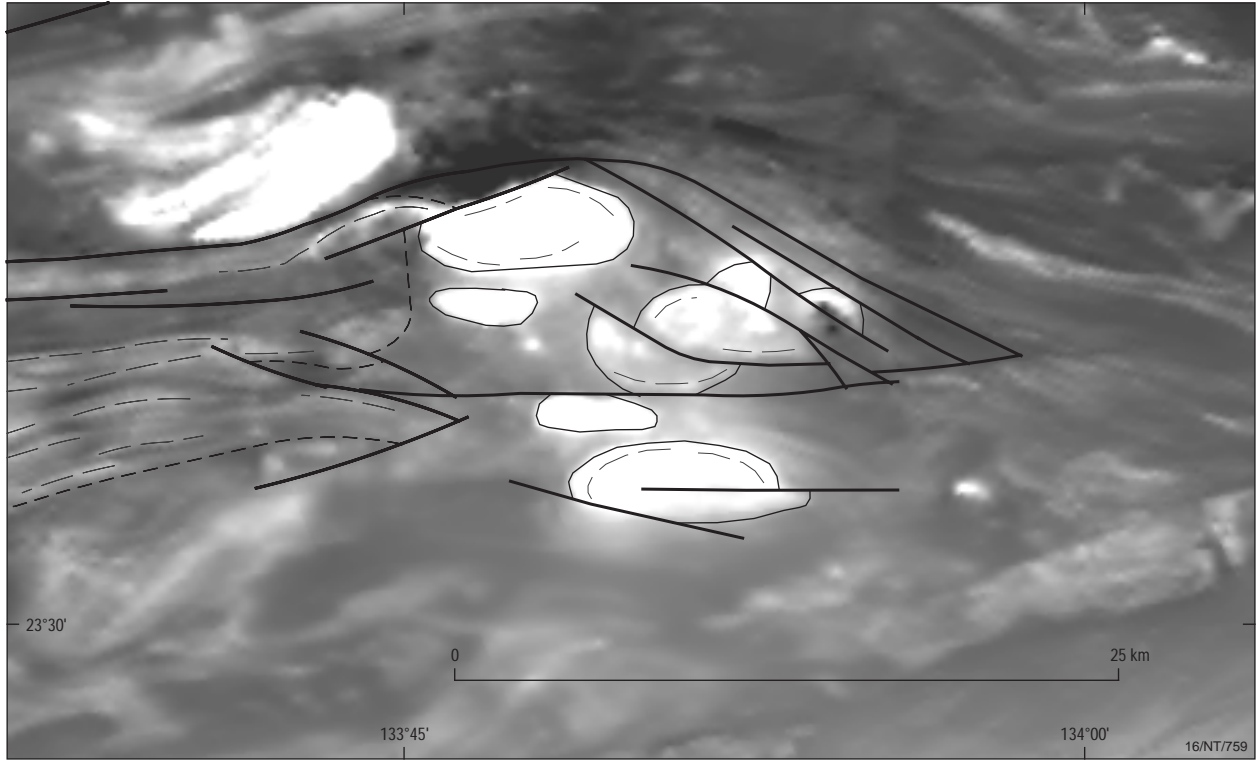


Figure 28a. Solid geology interpretation of the Joppita Bore mafic intrusions, showing the total sub-cropping extent of the intrusions.



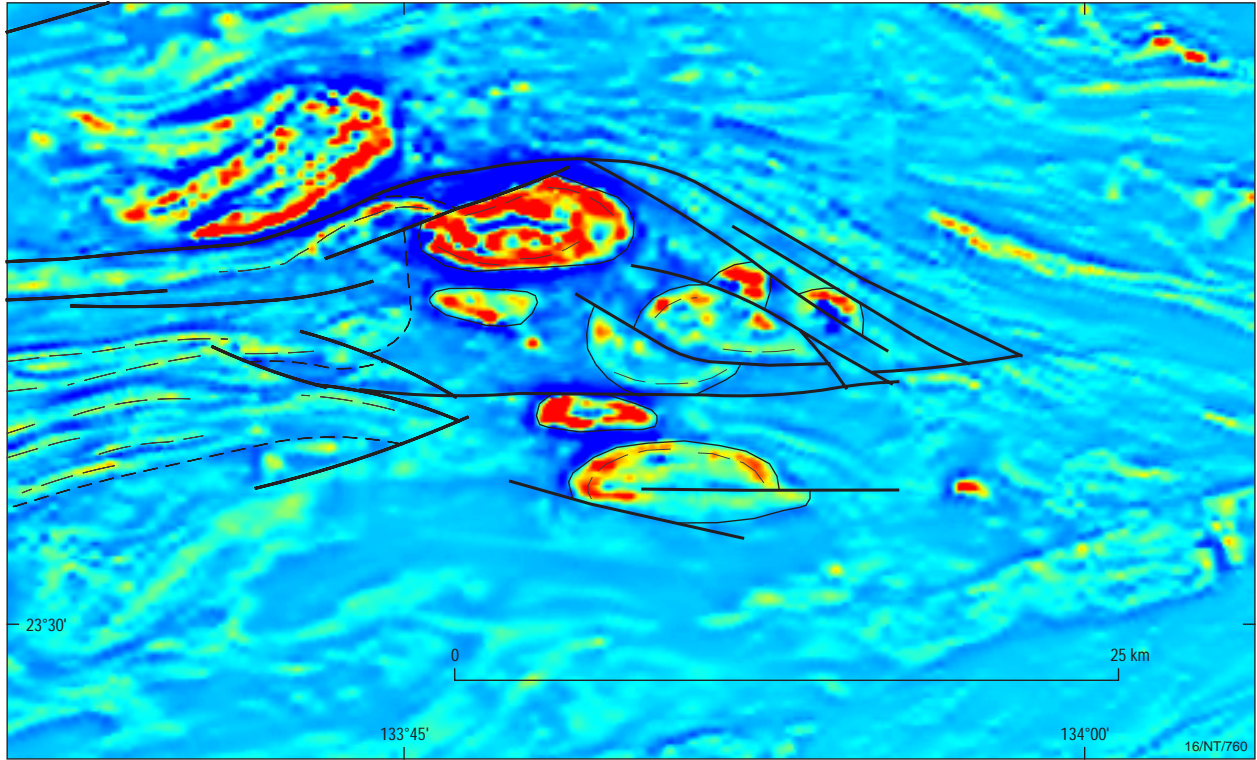
- Fault
- Boundary confident
- - - Boundary less confident
- - - Magnetic trend
- Gravity station locality

Figure 28b. Vertical gradient image of the Bouguer gravity field, including gravity station locations.



- Fault
- Boundary confident
- - - Boundary less confident
- - - Magnetic trend

Figure 28c. Grey scale image of the total magnetic intensity - reduced to pole.



- Fault
- Boundary confident
- - - Boundary less confident
- - - Magnetic trend

Figure 28d. Pseudo colour image of the vertical gradient applied to the total magnetic intensity (reduced to pole).