

AMIRA P552 PROJECT

"Crocodile Waterhole"

Scale: 1:1000

EASTING: 325150

NORTHING: 7799600

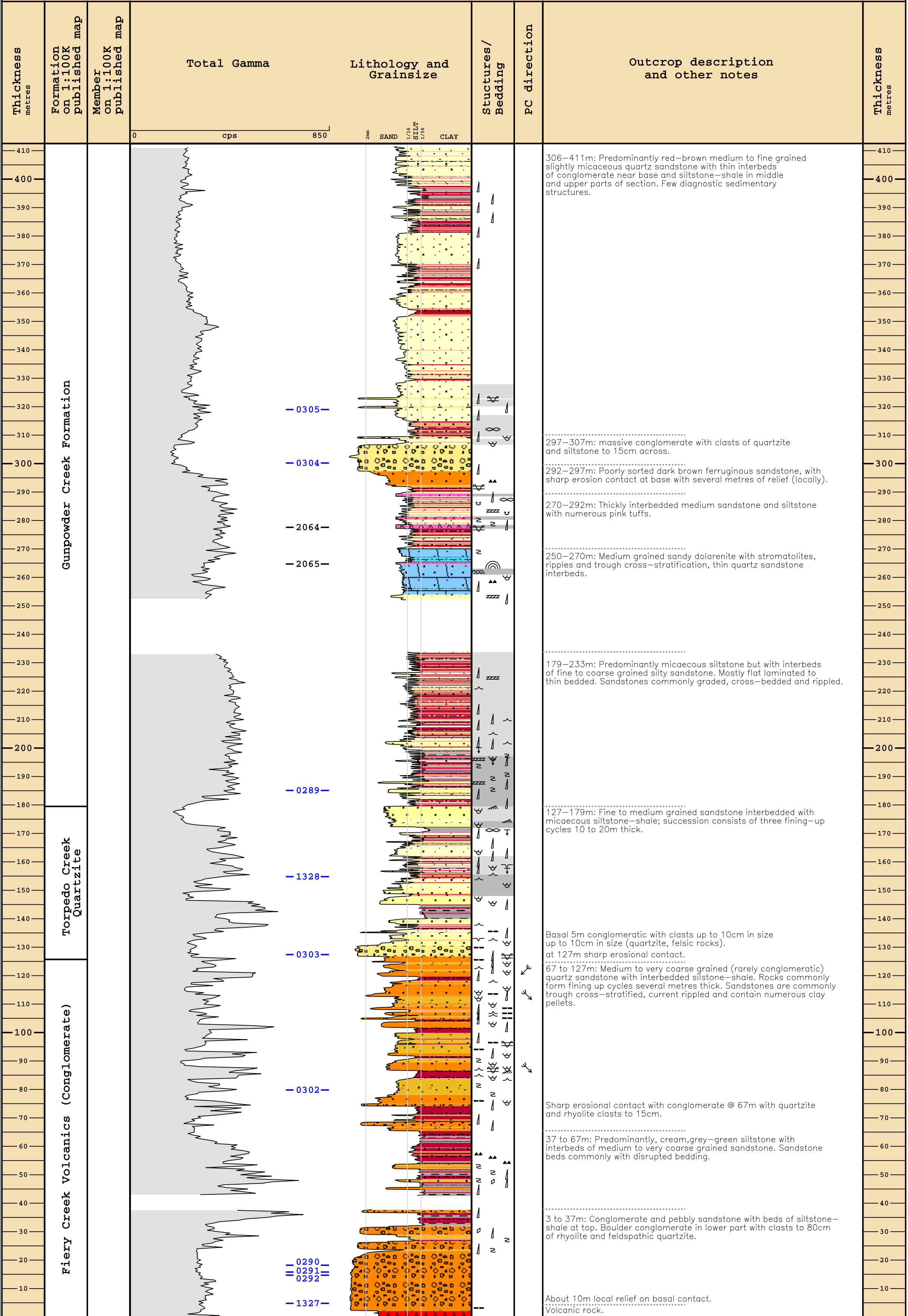
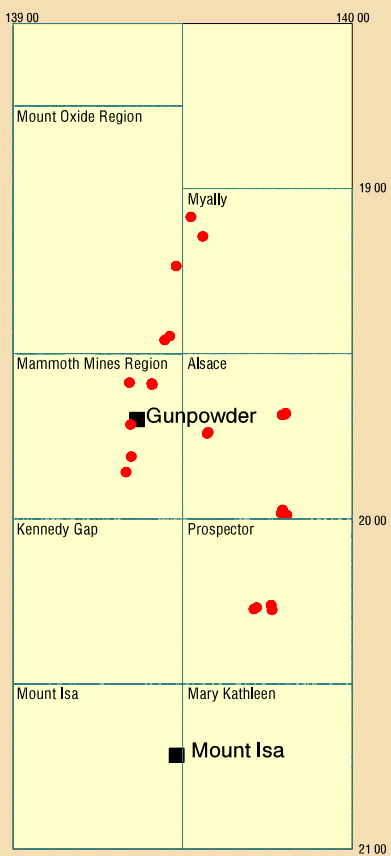
DATA TYPE: Measured Section

MAP SHEET: Mammoth Mines

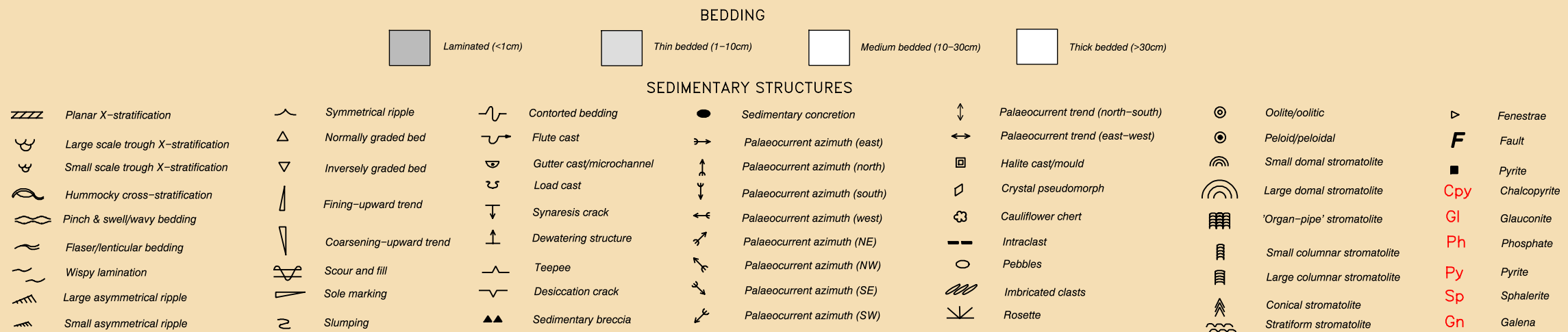
LOCATION: 7km NE of Crocodile Waterhole

GEOLOGY: MJ Jackson revision of T Sami, P Southgate & A Wells

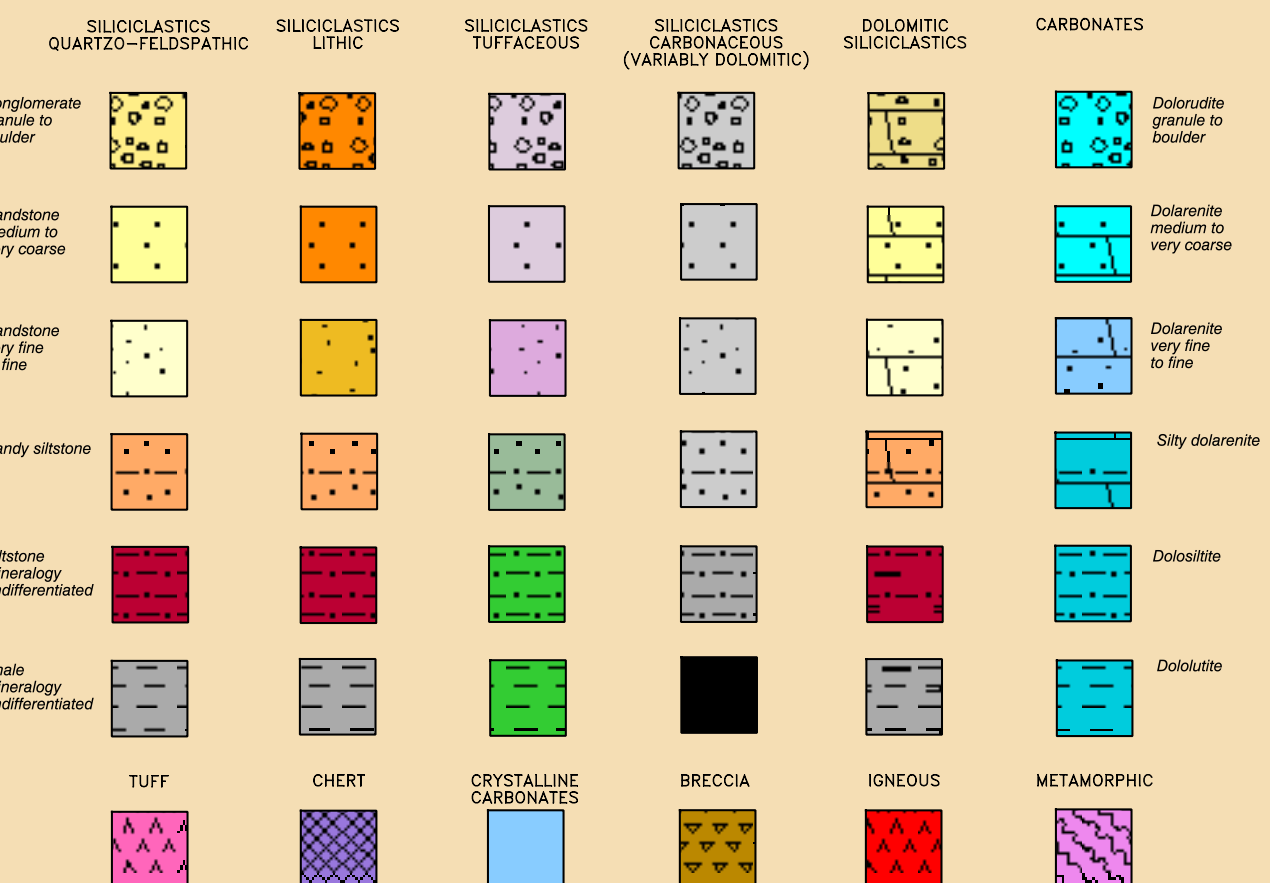
GEOLOG COMPILATION: K Barnett, U Rokvic, I Zeilinger



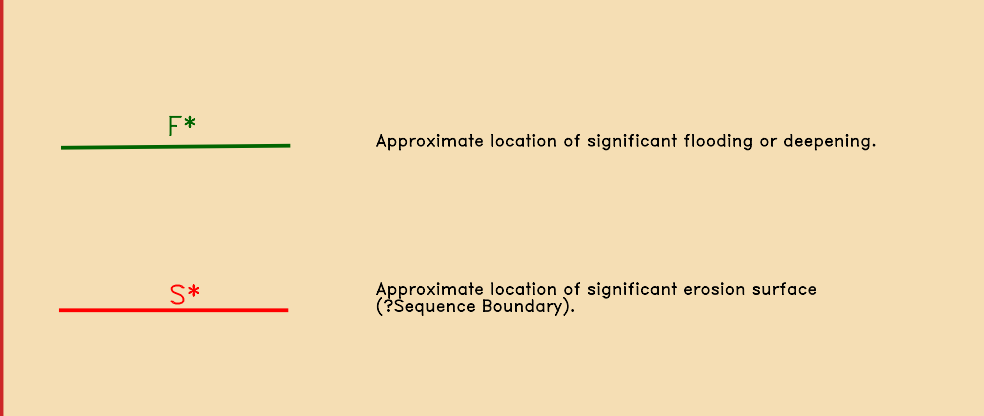
Sedimentary Structures and Bedding



Lithology Legend



Sequence Hierarchy



This work is copyright. Apart from any fair dealings for the purpose of study, research, criticism or review, as permitted under the Copyright Act, no part may be reproduced by any process without written permission. Copyright is the responsibility of the Chief Executive Officer, Geoscience Australia. Inquiries should be directed to the Chief Executive Officer, Geoscience Australia, GPO Box 378, Canberra City, ACT, 2601.

GA has tried to make the information in this product as accurate as possible. However, it does not guarantee that the information is totally accurate or complete. Therefore, you should not rely solely on this information when making a commercial decision.

Copies of this figure may be obtained as a CD ROM product, GA Record 2002/03 from: Geoscience Australia Sales Centre, GPO Box 378, Canberra City, ACT 2601, Phone 02-62499519, Facsimile 02-62499982.