

AMIRA P552 PROJECT

Leichhardt West

97/LW/01,97/LW/02,97/LW/03,97/LW/04,97/LW/05,97/LW/06,97/LW/07,97/LW/08

Scale: 1:2500

EASTING: 368450

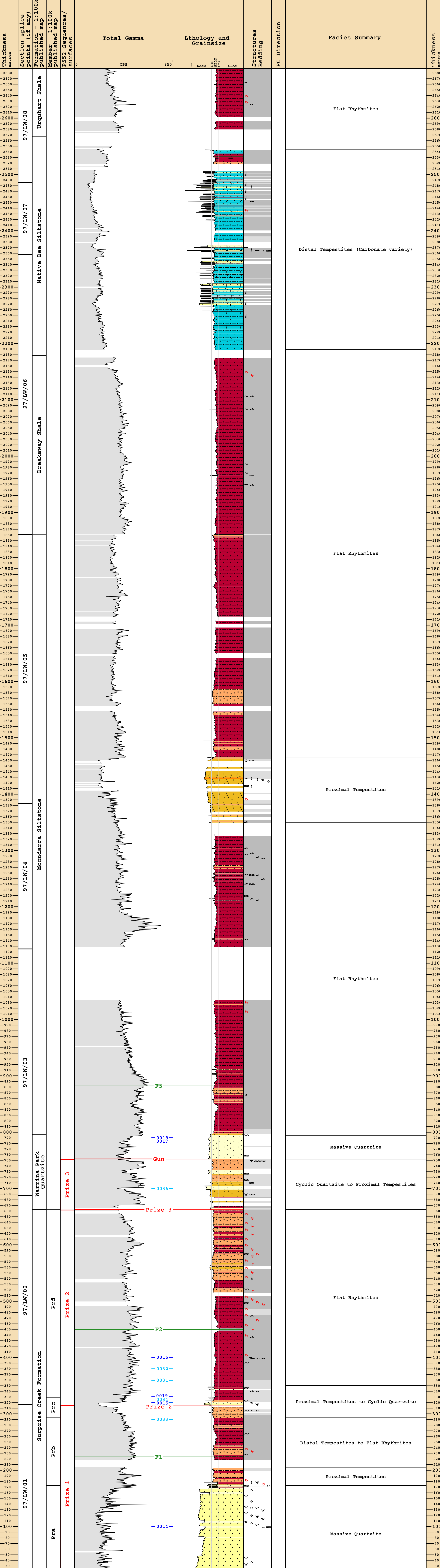
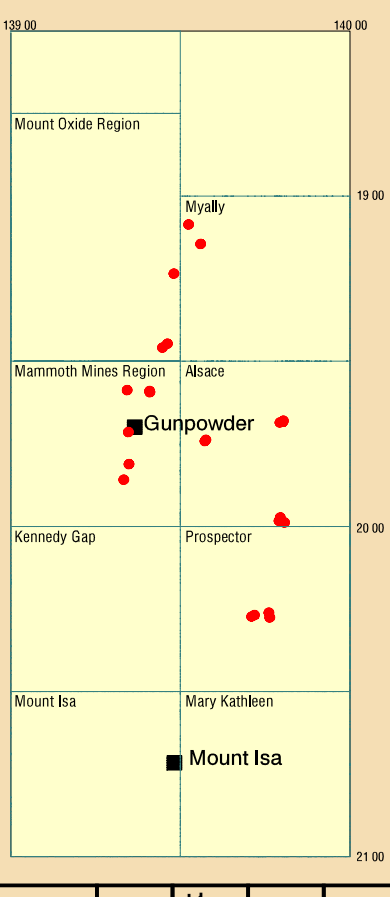
NORTHING: 7737600

DATA TYPE: Measured Section

MAP SHEET: Prospector

GEOLOGY: MJ Jackson revision of J Domagala & P Southgate

GEOLOG COMPILATION: K Barnett, J Domagala, I Zellinger



Sedimentary Structures and Bedding

BEDDING	
	Laminated (<10cm)
	Thin bedded (1-10cm)
	Medium bedded (10-30cm)
	Thick bedded (>30cm)

SEDIMENTARY STRUCTURES	
	Sedimentary concretion
	Paleocurrent azimuth (east)
	Paleocurrent azimuth (north)
	Paleocurrent azimuth (south)
	Paleocurrent azimuth (west)
	Paleocurrent azimuth (NE)
	Paleocurrent azimuth (NW)
	Paleocurrent azimuth (SE)
	Paleocurrent azimuth (SW)
	Flute cast
	Gutter cast/microchannel
	Load cast
	Synaeresis crack
	Desiccation crack
	Tepee
	Sole marking
	Slumping
	Symmetrical ripple
	Normally graded bed
	Inversely graded bed
	Finning-upward trend
	Coarsening-upward trend
	Scour and fill
	Sole marking
	Large asymmetrical ripple
	Small asymmetrical ripple
	Planar X-stratification
	Large scale trough X-stratification
	Small scale trough X-stratification
	Hummocky cross-stratification
	Pinch & swell/vegy bedding
	Flaser/lenticular bedding
	Wavy lamination
	Large asymmetrical ripple
	Small asymmetrical ripple

Sequence Hierarchy

F* Approximate location of significant flooding or deepening.

S* Approximate location of significant erosion surface (Sequence Boundary).

This work is copyright. Apart from any fair dealings for the purpose of study, research, criticism or review, as permitted under the Copyright Act, no part may be reproduced by any process without written permission. Copyright is the responsibility of the Chief Executive Officer, Geoscience Australia. Inquiries should be directed to the Chief Executive Officer, Geoscience Australia, GPO Box 378, Canberra City, ACT, 2601.

GA has tried to make the information in this product as accurate as possible. However, it does not guarantee that the information is totally accurate or complete. Therefore, you should not rely solely on this information when making a commercial decision.

Copies of this figure may be obtained as a CD ROM product, GA Record 2002/03 from: Geoscience Australia Sales Centre, GPO Box 378, Canberra City, ACT 2601, Phone 02-62499519, Facsimile 02-62499982.

Lithology Legend

SILICICLASTICS QUARTZITIC-FELDSPATHIC	SILICICLASTICS LITHIC	SILICICLASTICS TURFACIOUS	SILICICLASTICS CARBONACEOUS (VARIABLY DOLOMITIC)	DOLOMITIC SILICICLASTICS	CARBONATES

Sedimentary Structures and Bedding

BEDDING	
	Laminated (<10cm)
	Thin bedded (1-10cm)
	Medium bedded (10-30cm)
	Thick bedded (>30cm)

SEDIMENTARY STRUCTURES	
	Sedimentary concretion
	Paleocurrent azimuth (east)
	Paleocurrent azimuth (north)
	Paleocurrent azimuth (south)
	Paleocurrent azimuth (west)
	Paleocurrent azimuth (NE)
	Paleocurrent azimuth (NW)
	Paleocurrent azimuth (SE)
	Paleocurrent azimuth (SW)
	Flute cast
	Gutter cast/microchannel
	Load cast
	Synaeresis crack
	Desiccation crack
	Tepee
	Sole marking
	Slumping
	Symmetrical ripple
	Normally graded bed
	Inversely graded bed
	Finning-upward trend
	Coarsening-upward trend
	Scour and fill
	Sole marking
	Large asymmetrical ripple
	Small asymmetrical ripple
	Planar X-stratification
	Large scale trough X-stratification
	Small scale trough X-stratification
	Hummocky cross-stratification
	Pinch & swell/vegy bedding
	Flaser/lenticular bedding
	Wavy lamination
	Large asymmetrical ripple
	Small asymmetrical ripple