

Gunpowder Magazine

ML0102
SCALE 1:1000



Easting: 330041

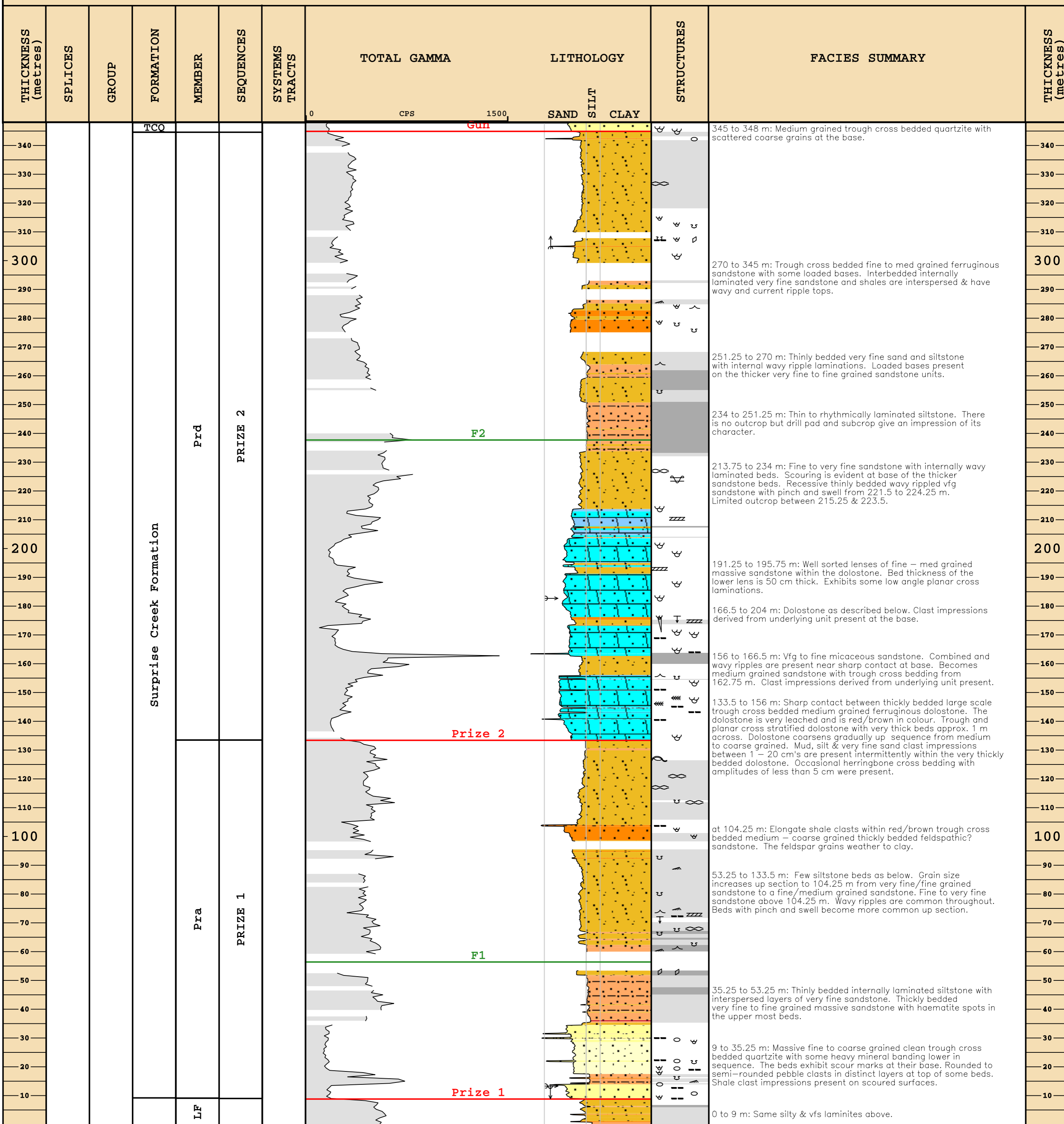
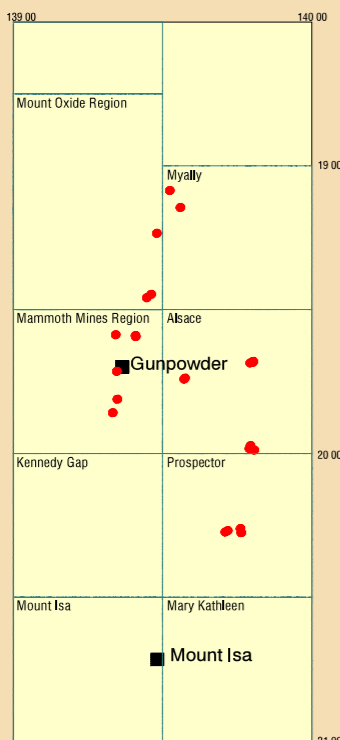
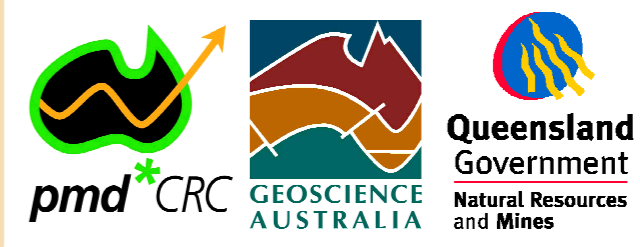
Northing: 7823570

Data type: Measured Section

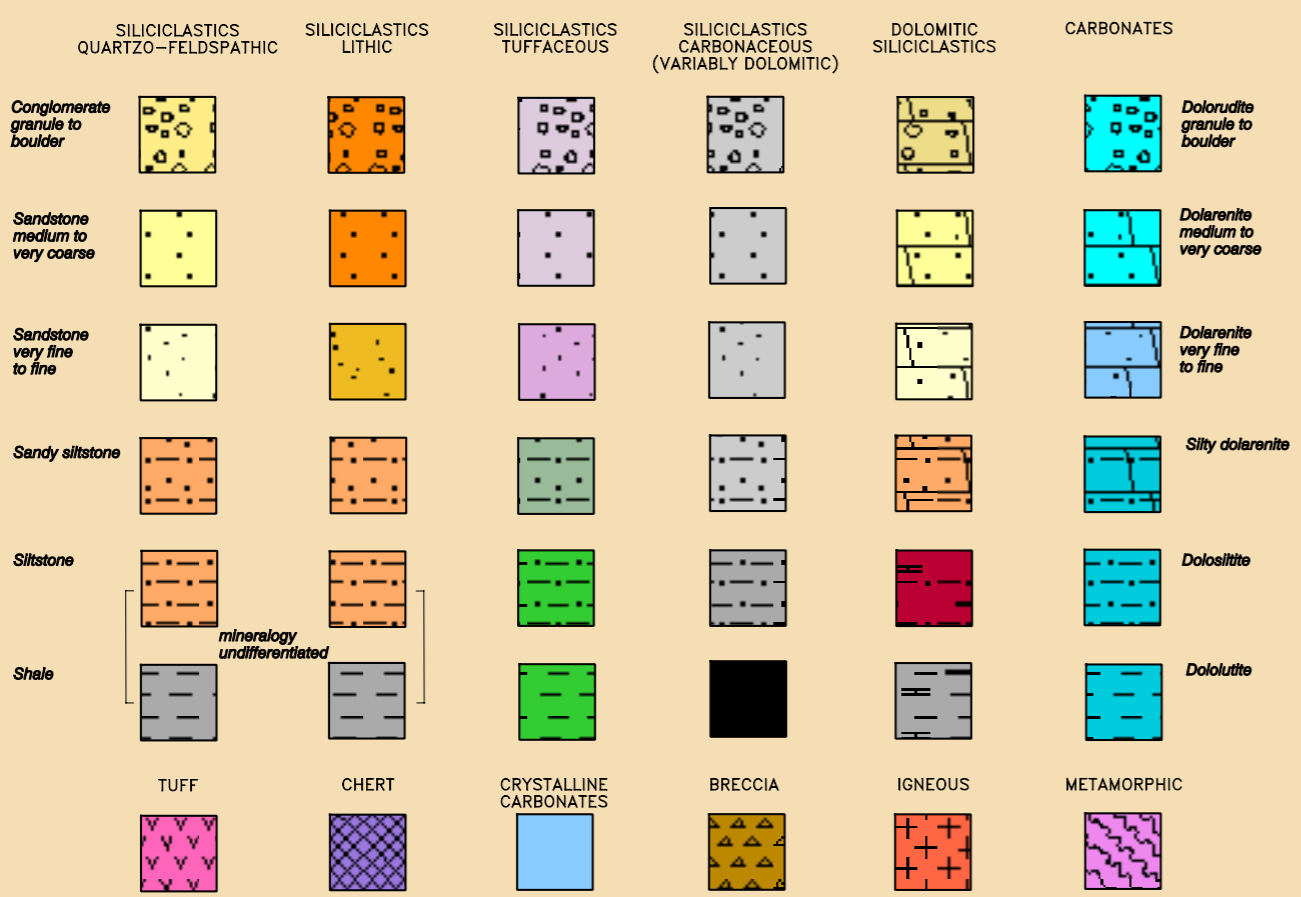
Map sheet: Mammoth Mines

Geology: ME Lech, PN Southgate

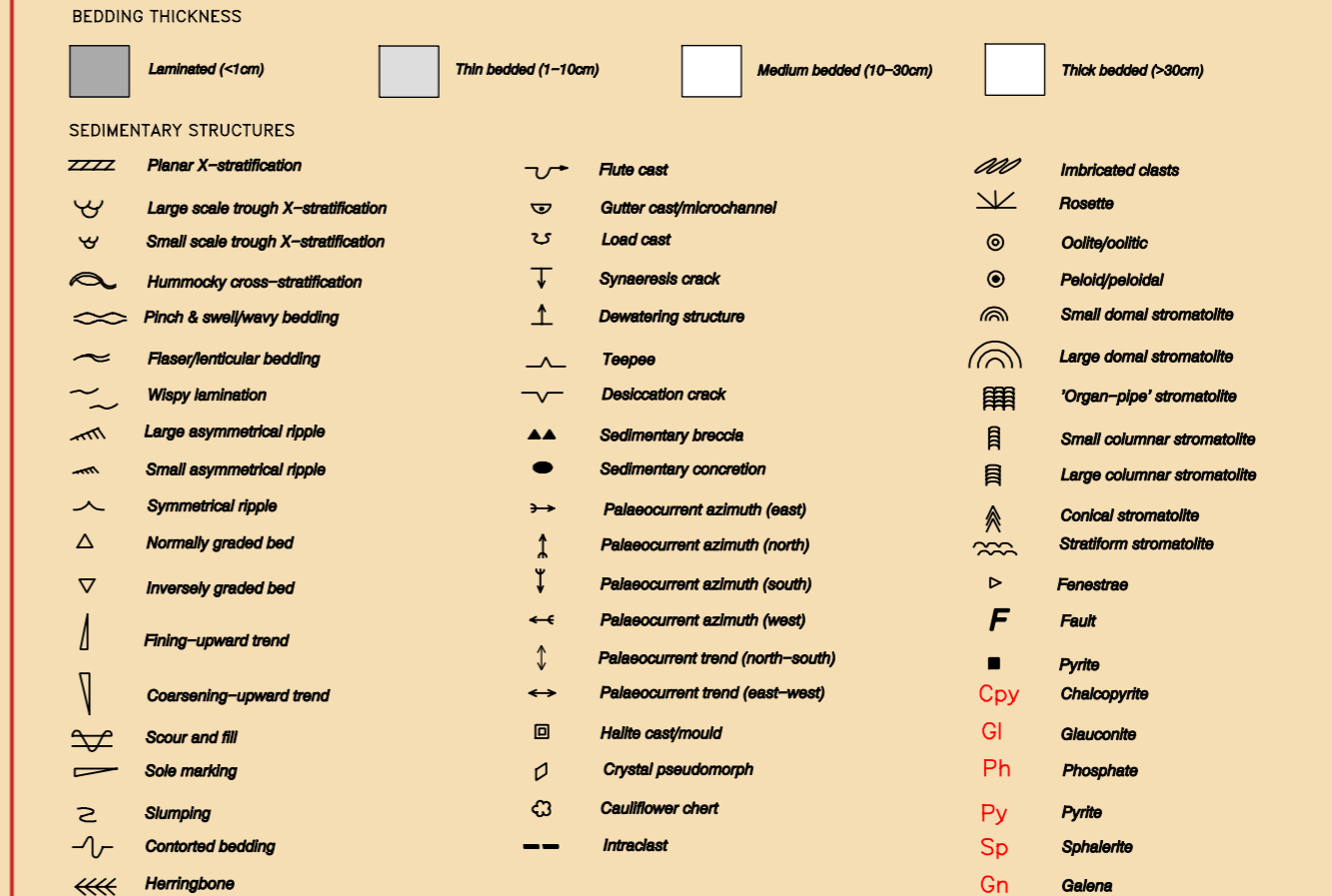
Geolog compilation: ME Lech



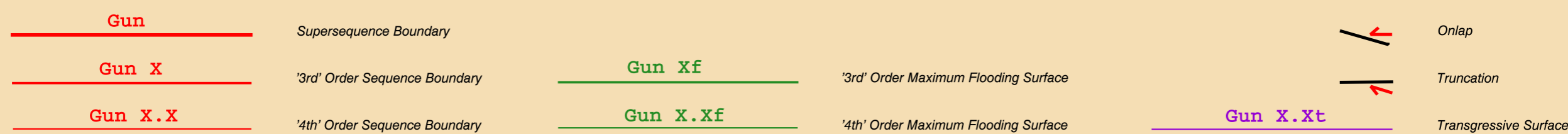
Lithology Legend



Sedimentary Structures



Sequence Hierarchy



© Commonwealth of Australia 2002

This work is copyright. Apart from any fair dealings for the purposes of study, research, criticism, or review as permitted under the Copyright Act, no part may be reproduced by any process without written permission. Copyright is the responsibility of the Chief Executive Officer, Geoscience Australia. Inquiries should be directed to the Chief Executive Officer, Geoscience Australia, GPO Box 378, Canberra, ACT 2601.

Geoscience Australia has tried to make the information in this product as accurate as possible. However, it does not guarantee that the information is totally accurate or complete. Therefore, you should not rely solely on this information when making a commercial decision.

Copies of this figure may be obtained as a CD ROM product GA Record 1999/15 from: Geoscience Australia Sales Centre, GPO Box 378, Canberra ACT 2601. Phone 02-62499519, Facsimile 02-62499982

Date: 19-Sep-2002 14:12:09