



Highlights

- A total of eight discoveries were reported in the March quarter 2005.
Offshore, four gas, one oil and one oil and gas discoveries were made. Gas discoveries were at Hurricane and Falcone in the Carnarvon Basin, Grayling in the Gippsland basin and Halladale in the Otway Basin. Oil was discovered at Hadda in the Perth Basin, with oil and gas at Albert in the Carnarvon Basin.
Onshore, there were two discoveries, oil at Coolum in the Eromanga Basin and gas at Champagne Creek in the Bowen Basin.
- The overall level of exploration drilling in the first quarter of 2005 at 32 wells is above last years first quarter of 23 wells.
Offshore drilling activity of 22 wells is the highest March quarter drilling activity for several years. Drilling occurred in the Carnarvon (11), Gippsland (4) Bonaparte and Perth (3 each) and Otway Basins (1).
Onshore drilling activity of 10 wells is the lowest since September quarter 2003. It is 14 wells less than the previous quarter. Drilling was undertaken in the Cooper / Eromanga (3), Bowen / Surat (4), Perth (2) and Gippsland (1) Basins.
- 2D seismic survey activity decreased by about 50% compared to the previous quarter, but is higher than March quarter 2004. All the 2D seismic surveys were acquired offshore. 3D seismic survey acquisitions were comparable with the March quarter 2004, with the majority conducted offshore in both quarters.
- Offshore development completions were undertaken at Bayu / Undan in the Bonaparte Basin, and in Scalybutt in the Carnarvon Basin.
Onshore developments were all undertaken in the Cooper/Eromanga Basin.

Drilling activity

Exploration drilling (Tables 1–3 & Figure 1) for the March quarter 2005, totalled 32 wells, 9 more than drilled during the same period in 2004, but eight less than the 40 wells drilled in the previous quarter.

Offshore exploration wells drilled during the March quarter 2005 totalled 22 which is 16 more than in the March quarter 2004 and six more than in the previous quarter. Eleven of these wells were drilled in the Carnarvon Basin, four in the Gippsland Basin. Three each in the Perth and Bonaparte Basins and one in the Otway Basin.

Onshore exploration wells in the March quarter 2005 totalled 10 which is 14 less than the previous quarter and seven less than the March quarter 2004. Three of these wells were drilled in the Cooper/Eromanga Basin, Two each in the Perth, Bowen and Surat Basin and one in the Gippsland Basin.

Development drilling (Tables 1–3 & Figure 1) activity for the March quarter 2005 of 21 wells is five more than the March quarter 2004 and only two less than the December quarter 2004.

Offshore, the number of development wells drilled during the March quarter 2005 was only two. This is eight less than the previous quarter and five less than the same quarter last year. These wells were drilled one each in Carnarvon and Bonaparte Basins.

Onshore, there were 19 development wells drilled in the March quarter 2005. This is ten more than the same quarter last year and six more than the previous quarter. Of these wells, 18 were drilled in the Cooper/Eromanga Basin and one in the Gippsland Basin.

Figure 1. Wells and metres drilled, 1994-2005

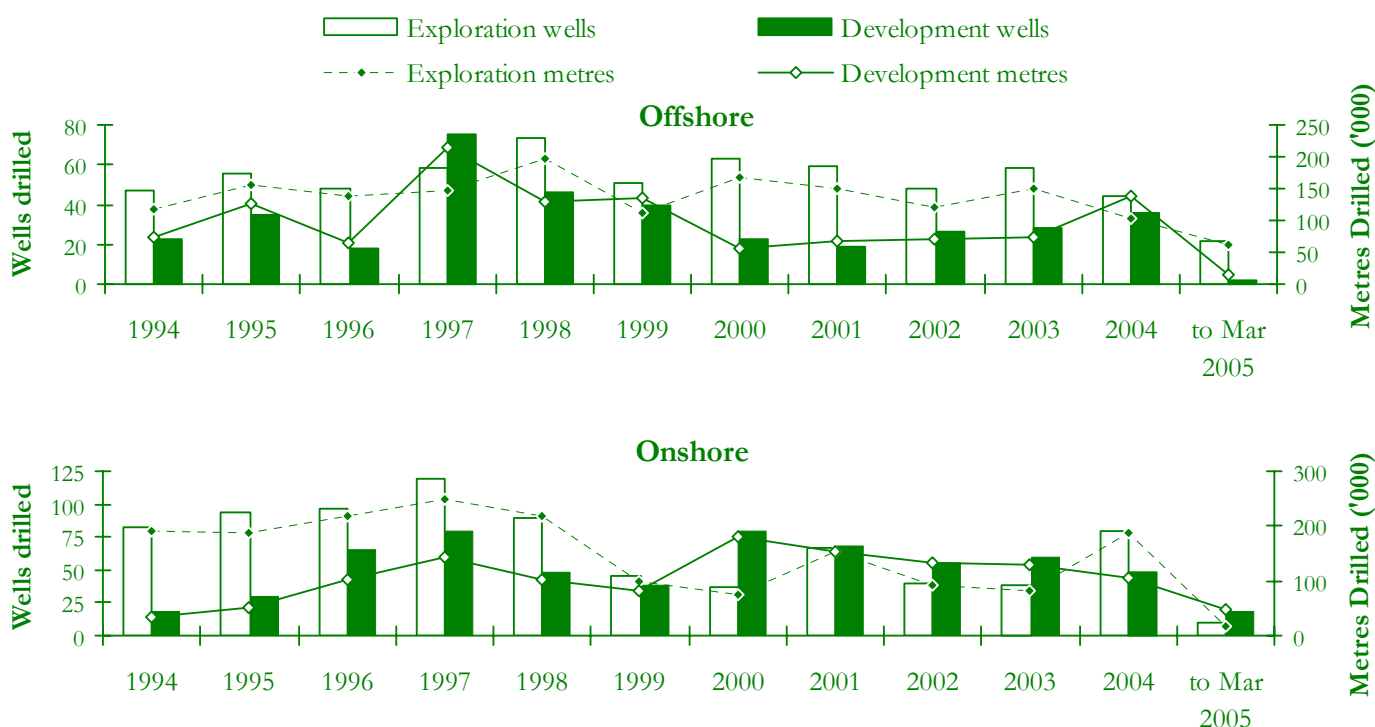


Table 1. Quarterly wells* and metres drilled 2001 to 2005

Quarter Ended	Exploration				Development				Exploration		Development		Total	
	Onshore		Offshore		Onshore		Offshore		Total		Total		Total	
	Wells	Metres	Wells	Metres	Wells	Metres	Wells	Metres	Wells	Metres	Wells	Metres	Wells	Metres
Sep-01	15	34 358	10	25 184	16	36 543	8	21 175	25	59 542	24	57 718	49	117 260
Dec-01	21	49 280	18	44 465	12	20 291	4	9 932	39	93 745	16	30 283	55	124 028
Total 2001	68	158 009	59	149 805	68	152 959	20	67 207	127	307 814	88	220 226	215	528 040
Mar-02	11	23 164	16	38 668	18	45 639	5	15 771	27	61 832	23	61 410	50	123 242
Jun-02	7	17 099	8	17 921	21	47 860	10	27 989	15	35 020	31	75 849	46	110 869
Sep-02	10	22 673	9	25 023	6	15 539	7	19 198	19	47 696	13	34 737	32	82 433
Dec-02	12	29 102	15	38 655	11	23 448	5	13 188	27	67 757	16	36 636	43	104 393
Total 2002	40	92 038	48	120 267	56	132 486	27	76 146	88	212 305	83	208 632	171	420 937
Mar-03	9	18 600	21	46 773	8	20 667	9	21 336	30	65 373	17	42 003	47	107 376
Jun-03	5	12 151	14	42 373	14	35 294	5	19 542	19	54 524	19	54 836	38	109 360
Sep-03	7	13 552	11	30 492	22	44 381	8	17 718	18	44 044	30	62 099	48	106 143
Dec-03	17	37 068	12	31 649	16	29 413	6	15 494	29	68 718	22	44 907	51	113 624
Total 2003	38	81 371	58	151 287	60	129 755	28	74 090	96	232 658	88	203 845	184	436 503
Mar-04	17	46 480	6	17 584	9	24 902	7	26 018	23	64 064	16	50 920	39	114 984
Jun-04	20	43 428	12	26 564	13	29 102	9	36 116	32	69 992	23	70 119	52	139 766
Sep-04	19	44 880	10	24 768	13	29 337	10	40 782	29	69 648	28	82 245	59	149 863
Dec-04	24	51 845	16	34 642	13	22 840	10	36 034	40	86 487	23	58 874	63	145 361
Total 2004	80	186 633	44	103 557	48	106 180	36	138 950	124	290 190	84	245 130	208	535 320
Mar-05	10	18 085	22	60 606	19	47 185	2	16 124	32	78 690	21	63 309	53	141 999

*Wells that reached total depth during the quarter. †Revised.

Table 2. Onshore and offshore wells and metres drilled, March quarter 2005*

State	Exploration				Development				Onshore		Offshore		Total	
	Onshore		Offshore		Onshore		Offshore		Total		Total		Total	
	Wells	Metres	Wells	Metres	Wells	Metres	Wells	Metres	Wells	Metres	Wells	Metres	Wells	Metres
Qld	6	9 570	0	0	8	16 129	0	0	14	25 699	0	0	14	25 699
Vic	1	1 868	5	16 712	0	0	0	0	1	1 868	5	16 712	6	18 580
SA	1	2 179	0	0	11	31 056	0	0	12	33 235	0	0	12	33 235
WA	2	4 468	14	37 988	0	0	1	3 674	2	4 468	15	41 662	17	46 130
NT	0	0	3	5 906	0	0	0	0	0	0	3	5 906	3	5 906
JPDA**	0	0	0	0	0	0	1	12 450	0	0	1	12 450	1	12 450
Total	10	18 085	22	60 606	19	47 185	2	16 124	29	65 270	24	76 730	53	141 999

*Wells that reached total depth during the quarter.

Table 3. Onshore and offshore drilling status at 31 March 2005

State	Exploration wells											Development wells											
	Completed or C&S						Abandoned or secured					Completed or C&S						Abandoned or secured					
	D ¹	DA	Sus ²	Oil	Gas	O&G	Dry	Oil	Gas	O&G	Un	D ¹	DA	Sus	Oil	Gas	O&G	Ser ³	Dry	Oil	Gas	O&G	Un
Qld	6	1	-	3	2	-	1	-	-	-	-	8	2	-	3	2	-	-	2	1	-	-	-
Vic	6	1	-	-	2	-	3	-	-	1	-	-	-	-	-	-	-	-	-	-	-	-	-
SA	1	1	-	-	1	-	-	-	-	-	-	11	1	-	-	10	-	-	1	-	-	-	-
WA	16	2	-	1	3	1	5	2	4	-	-	1	1	-	1	-	-	-	-	-	-	-	-
NT	3	1	-	-	-	-	3	-	-	-	-	-	-	-	-	-	-	-	-	-	-	-	-
JPDA	-	-	-	-	-	-	-	-	-	-	-	1	-	-	-	1	-	-	-	-	-	-	-
Total Qtr	32	6	-	4	8	1	12	2	4	1	-	21	4	-	4	13	-	-	3	1	-	-	-
2004	124	5	26	10	8	1	58	11	8	2	-	84	5	25	19	14	4	-	20	1	1	-	-
2003	96	4	9	6	9	-	57	6	9	-	-	88	4	46	16	4	1	-	19	2	-	-	-
Previous quarter	39	5	11	4	2	-	14	4	4	-	-	24	5	7	7	5	-	-	4	1	-	-	-

C&S, cased and suspended; D, drilled; DA, drilling ahead; Sus, suspended; O&G, oil and gas; Un, unspecified; Ser, service well; JPDA: Joint Petroleum Development Area.

¹ Excludes wells drilling ahead or suspended. ² Indicates drilling has temporarily stopped before reaching final depth. ³ Classification applicable only to development wells.

⁴ Includes Territory of Ashmore and Cartier Islands.

Discoveries

Table 4 lists details of the reported discoveries of oil and gas during the year to 31 March 2005.

Table 4. Discoveries*, 1 January to 31 March 2005 (in order of discovery)

Operator	Field	Nature of discovery	Basin	State	Permit
Offshore					
Apache	Grayling	Gas	Gippsland	Vic	Vic/P54
Santos	Hurricane	Gas	Carnarvon	WA	WA208PR2
Woodside	Falcone	Gas	Carnarvon	WA	WA271PR1
Apache	Albert	Oil & Gas	Carnarvon	WA	TL/6
Origin	Halladale	Gas	Otway	Vic	Vic/P37(V)
ROC	Hadda	Oil	Perth	WA	WA325P
Onshore					
Beach	Coolum	Oil	Eromanga	Qld	ATP269P
Sunshine	Champagne Creek	Gas	Bowen	Qld	ATP768P

*Subject to revision. † Inferred from logs only

Seismic survey activity

Offshore, there was a total of 5162 km of 2D seismic for the March quarter 2005 (Table 5 & Figure 2). This was 6378 km less than December quarter 2004, and 3662 km more than in the March quarter 2004. The surveys were undertaken in the Carnarvon, Duntroon, Sorell, Gippsland and Perth Basins. 3D seismic surveys were conducted over 2940 km² during the March quarter 2005, where as there was none acquired in the previous December quarter. These surveys were conducted in the Gippsland and Carnarvon Basins

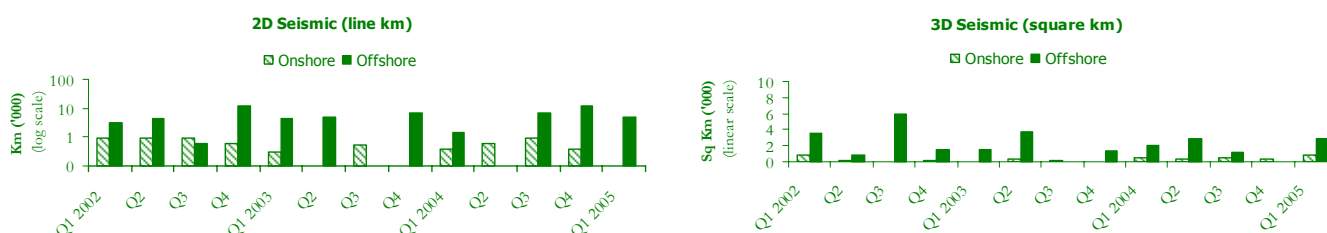
Onshore, there was no 2D seismic acquired during the March quarter 2005. There was 400 km acquired in the previous December quarter. 3D seismic surveys were undertaken over 930 km² which is 517 km² more than the previous quarter. These surveys were carried out in the Cooper and Perth Basins.

Table 5. Seismic survey activity

State	2003				2004				March Quarter 2005			
	Onshore		Offshore		Onshore		Offshore		Onshore		Offshore	
	2D	3D km ²	2D	3D km ²	2D	3D km ²	2D	3D km ²	2D	3D km ²	2D	3D km ²
Qld	210	509	23	-	306	1553	-	-	-	666	-	-
NSW	175	-	-	-	543	110	1500	-	-	-	-	-
Vic	284	-	954	1709	-	-	3881	-	-	-	359	2174
Tas	-	-	1 336	-	-	-	-	-	-	-	680	-
SA	702	-	507	-	1421	52	-	-	-	-	167	-
WA	-	-	18594	6204	-	-	9947	6030	-	264	3956	766
NT	-	-	-	-	-	-	4724	-	-	-	-	-
JPDA*	-	-	678	-	-	-	-	-	-	-	-	-
Sub-total	1 371	509	22092	7913	2270	1715	20052	6030	-	930	5162	2940
Grand	<i>Line km</i>		23463		22322		5162					
Total	<i>Square km</i>		8422		7745		3870					

*JPDA: Joint Petroleum Development Area. Line: approx. Line km for 3D surveys † Revised.

Figure 2. Seismic survey activity Quarter 1, 2002 to Quarter 1, 2005



Rig activity

The number of active rigs during March 2005 was nineteen, one more than at the end of December 2004 (18) and five more than at the end of March 2004 (14). The number of active rigs during the quarter ranged from sixteen to nineteen, with nineteen active at the end of the quarter.

Offshore, the number of available rigs during the March quarter 2005 is comparable with the previous quarter, with eleven rigs available in October and December, and nine available in November. Rig availability for the March quarter 2004 has decreased compared to previous quarters with 91% activity in both January and March. Active rigs were drilling in the Bonaparte, Carnarvon, Perth, Otway and Gippsland Basins.

Onshore, the number of active rigs during the quarter ended March 2004 varied between seven and nine, which is less than the previous quarter where was between twelve and nine active rigs. The Rig availability for the March quarter 2004 has decreased compared to previous quarters, with 69% activity in March. Active rigs were drilling in the Perth, Cooper/Eromanga, Gippsland, Bowen and Surat Basins.

Success rates

The success rates shown in Table 7 are based on the number of petroleum discoveries and new-field wildcat wells drilled in Australia onshore and offshore from 1992 to 2004. No assumptions have been made about whether a 'discovery' has proved or will prove to be commercial. Geoscience Australia defines a discovery as a well from which a measurable amount of oil or gas has been recovered and also includes those discoveries inferred from well logs.

Table 7. Success rates, 1992-2004

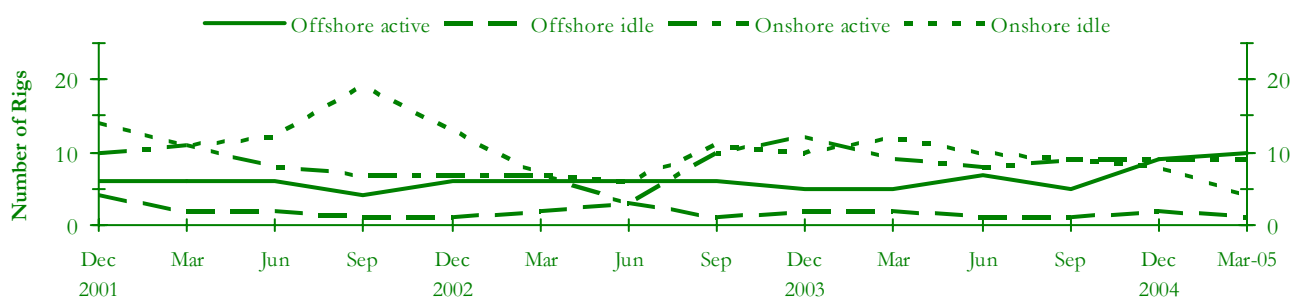
Year	Success Rate		
	Onshore	Offshore	Combined
1992	1:3.4	1:4.3	1:3.7
1993	1:3.4	1:3.5	1:3.4
1994	1:1.9	1:4.0	1:2.3
1995	1:2.8	1:4.7	1:3.4
1996	1:2.8	1:3.5	1:3.1
1997	1:2.1	1:4.6	1:2.6
1998	1:2.2	1:4.9	1:3.0
1999	1:4.0	1:4.0	1:4.0
2000	1:3.3	1:2.9	1:3.0
2001	1:1.9	1:4.0	1:2.6
2002	1:1.5	1:2.8	1:2.2
2003	1:3.5	1:7.1	1:5.2
2004	1:2.2	1:2.8	1:2.3

Table 6. Drilling rig activity, January 2004 to March 2005

	Active				Idle				Availability					
	Onshore		Offshore	Total	Onshore		Offshore	Total	Onshore		Offshore			
	S	M	D		(all deep)	S	M		D	(all deep)	Total	%Active	Total	%Active
Jan-04	0	1	10	5	16	3	5	2	3	13	21	52	8	63
Feb	0	1	7	5	13	3	5	5	3	16	21	38	8	63
Mar	0	1	8	5	14	3	5	5	1	14	22	41	6	83
Apr	0	1	8	6	15	3	3	4	2	12	19	47	8	75
May	0	1	9	7	17	3	3	3	1	10	19	53	8	88
Jun	0	1	7	7	15	3	3	4	1	11	18	44	8	88
Jul	0	1	6	6	13	2	3	4	1	10	16	44	7	86
Aug	0	3	7	6	16	3	3	3	1	10	19	53	7	86
Sep	0	2	7	5	14	2	4	3	1	10	18	50	6	83
Oct	0	2	9	7	18	2	2	3	3	10	18	61	10	70
Nov	0	3	9	8	20	1	2	3	2	8	18	67	10	80
Dec	0	2	7	9	18	1	3	4	2	10	17	53	11	82
Jan-05	0	1	6	10	17	0	2	2	1	5	11	64	11	91
Feb	0	2	7	8	16	0	2	2	1	5	12	67	9	89
Mar	0	2	7	10	19	0	2	2	1	5	12	69	11	91

S, shallow (<1525 m); M, medium (1525–2750 m); D, deep (>2750 m).

Figure 3. Drilling rig activity, December 2001 to March 2005



This publication includes preliminary statistics for wells and metres drilled, seismic survey line & square kilometres recorded and rig activity, to the end of March 2005. The data from which these statistics are derived have been compiled by Geoscience Australia from various sources, including the petroleum exploration industry and State and Northern Territory departments of mines.

Queries concerning these statistics should be directed to Eugene Petric: Eugene.Petric@ga.gov.au; Ph. (02) 6249 9270 or Fax (02) 6249 9962.

This document is available on the Internet at <http://www.ga.gov.au/oceans/> and look under 'Petroleum Industry Statistics'.