



Highlights

- A total of nine discoveries were reported in the quarter. *Offshore*, three gas and two oil were made. Gas discoveries were at Black Watch in the Otway Basin, Landale in the Carnarvon Basin and Vesta in the Bonaparte Basin. Oil was discovered at Lauda and Remus in the Carnarvon Basin. *Onshore*, two oil and two gas were made. Oil discoveries were made at Baystone and Dululu in the Eromanga, and Oil was discovered at Ungabilla in the Surat Basin and Matrix in the Cooper Basin.
- The number of exploration wells drilled in June quarter 2005 was 28, which is down 4 wells from the previous quarter. *Offshore*, drilling activity decreased to 11 wells from the previous quarter high of 22. Drilling occurred in the Carnarvon (8), Bonaparte (1) and Otway (1) Basins. *Onshore*, drilling activity increased to 17 well, from the previous quarter's 10. Drilling activity occurred in the Cooper/Eromanga (10), Perth (2), Surat (2) and Bowen (2) Basins.
- 2D seismic activity has decreased from the March quarter 2006, as no surveys were acquired offshore in the June Quarter. 3D seismic activity also decreased, reflecting reduced Offshore activity.
- *Offshore* development completions were undertaken at Carnarvon (6) and Otway (2) Basins. *Onshore* development completions were undertaken in the Cooper/Eromanga (18) and Perth (1) Basins.

Drilling activity

Exploration drilling (Tables 1–3 & Figure 1) for the June quarter 2005, totalled 28 wells, four less than drilled during the same period in 2004, and four less than the 32 wells drilled in the previous quarter.

Offshore exploration wells drilled during the June quarter 2005 totalled 11 which is one less than in the June quarter 2004 and 11 less than in the previous quarter. Eight of these wells were drilled in the Carnarvon Basin, two in the Bonaparte Basin and one in the Otway Basin.

Onshore exploration wells in the June quarter 2005 totalled 17 which is seven more than the previous quarter but three less than the June quarter 2004. Ten of these wells were drilled in the Cooper/Eromanga Basin, three in the Perth Basin and two each in the Bowen and Surat Basins.

Development drilling (Tables 1–3 & Figure 1) activity for the June quarter 2005 of 27 wells is four more than the June quarter 2004 and six more than the March quarter 2005.

Offshore, the number of development wells drilled during the June quarter 2005 was eight. This is six more than the previous quarter and only one less than the same quarter last year. Six of these wells were drilled in the Carnarvon basin and two in the Otway Basin.

Onshore, there were 19 development wells drilled in the June quarter 2005. This is six more than the same quarter last year and the same as the previous quarter. Of these wells, 18 were drilled in the Cooper/Eromanga Basin and one in the Perth Basin.

Figure 1. Wells and metres drilled, 1994-2005

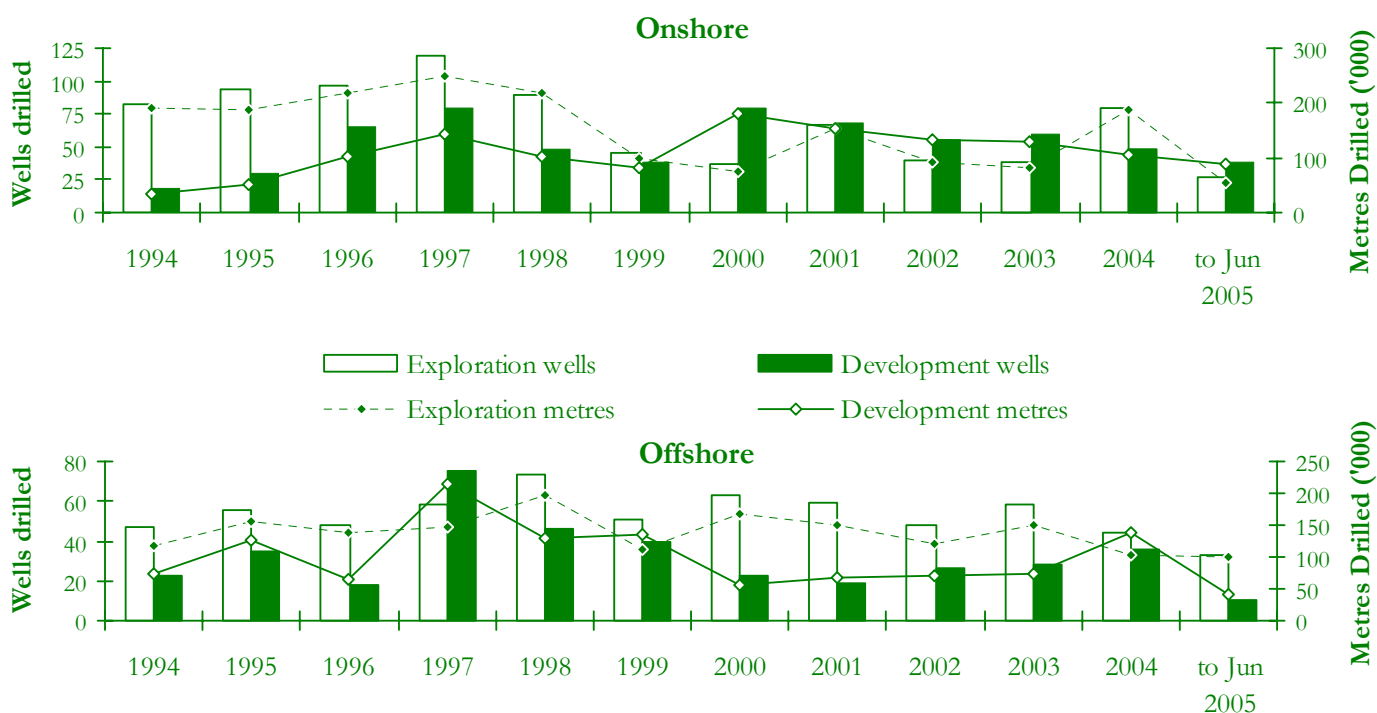


Table 1. Quarterly wells* and metres drilled 2002 to 2005

Quarter Ended	Exploration				Development				Exploration		Development		Total	
	Onshore		Offshore		Onshore		Offshore		Total		Total		Total	
	Wells	Metres	Wells	Metres	Wells	Metres	Wells	Metres	Wells	Metres	Wells	Metres	Wells	Metres
Jun-02	7	17 099	8	17 921	21	47 860	10	27 989	15	35 020	31	75 849	46	110 869
Sep-02	10	22 673	9	25 023	6	15 539	7	19 198	19	47 696	13	34 737	32	82 433
Dec-02	12	29 102	15	38 655	11	23 448	5	13 188	27	67 757	16	36 636	43	104 393
Total 2002	40	92 038	48	120 267	56	132 486	27	76 146	88	212 305	83	208 632	171	420 937
Mar-03	9	18 600	21	46 773	8	20 667	9	21 336	30	65 373	17	42 003	47	107 376
Jun-03	5	12 151	14	42 373	14	35 294	5	19 542	19	54 524	19	54 836	38	109 360
Sep-03	7	13 552	11	30 492	22	44 381	8	17 718	18	44 044	30	62 099	48	106 143
Dec-03	17	37 068	12	31 649	16	29 413	6	15 494	29	68 718	22	44 907	51	113 624
Total 2003	38	81 371	58	151 287	60	129 755	28	74 090	96	232 658	88	203 845	184	436 503
Mar-04	17	46 480	6	17 584	9	24 902	7	26 018	23	64 064	16	50 920	39	114 984
Jun-04	20	43 428	12	26 564	13	29 102	9	36 116	32	69 992	23	70 119	52	139 766
Sep-04	19	44 880	10	24 768	13	29 337	10	40 782	29	69 648	28	82 245	59	149 863
Dec-04	24	51 845	16	34 642	13	22 840	10	36 034	40	86 487	23	58 874	63	145 361
Total 2004	80	186 633	44	103 557	48	106 180	36	138 950	124	290 190	84	245 130	208	535 320
Mar-05	10	18 085	22	60 606	19	47 185	2	16 124	32	78 690	21	63 309	53	141 999
Jun-05	17	35 122	11	39 880	19	39 568	8	25 639	28	75 002	27	65 207	55	140 209

*Wells that reached total depth during the quarter

Changes in previously reported statistics are a result of additional information received by Geoscience Australia and revised classification of wells.

Table 2. Onshore and offshore wells and metres drilled, June quarter 2005*

State	Exploration				Development				Onshore		Offshore		Total	
	Onshore		Offshore		Onshore		Offshore		Total		Total		Total	
	Wells	Metres	Wells	Metres	Wells	Metres	Wells	Metres	Wells	Metres	Wells	Metres	Wells	Metres
Qld	8	13 778	0	0	8	12 806	0	0	16	26 514	0	0	16	26 514
Vic	0	0	1	5 020	0	0	2	5 243	0	0	3	10 263	3	10 263
SA	6	14 069	0	0	10	24 746	0	0	16	38 815	0	0	16	38 815
WA	3	7 345	8	28 380	1	2 016	6	20 396	4	9 361	14	48 776	18	58 134
NT	0	0	2	6 480	0	0	0	0	0	0	2	6 480	2	6 480
JPDA**	0	0	0	0	0	0	0	0	0	0	0	0	0	0
Total	17	35 122	11	39 880	19	39 568	8	25 639	36	74 690	19	65 519	55	140 209

*Wells that reached total depth during the quarter.

Table 3. Onshore and offshore drilling status at 30 June 2005

State	Exploration wells										Development wells												
	Completed or C&S						Abandoned or secured				Completed or C&S						Abandoned or secured						
	D ¹	DA	Sus ²	Oil	Gas	O&G	Dry	Oil	Gas	O&G	Un	D ¹	DA	Sus	Oil	Gas	O&G	Ser ³	Dry	Oil	Gas	O&G	Un
Qld	8	-	-	2	4	-	2	-	-	-	-	8	1	-	4	2	1	-	1	-	-	-	-
Vic	1	-	-	-	-	-	-	-	1	-	-	2	-	-	-	1	-	-	-	-	1	-	-
SA	6	3	-	2	1	-	2	1	-	-	-	10	-	-	3	5	1	-	-	-	1	-	-
WA	11	1	-	2	1	-	5	2	1	-	-	7	2	-	3	2	-	-	1	-	1	-	-
NT	2	1	-	-	1	-	1	-	-	-	-	-	-	-	-	-	-	-	-	-	-	-	-
JPDA	-	-	-	-	-	-	-	-	-	-	-	-	-	-	-	-	-	-	-	-	-	-	-
Total Qtr	28	5	-	6	7	-	10	3	2	-	-	27	3	-	10	10	2	-	2	-	3	-	-
2004	124	5	26	10	8	1	58	11	8	2	-	84	5	25	19	14	4	-	20	1	1	-	-
2003	96	4	9	6	9	-	57	6	9	-	-	88	4	46	16	4	1	-	19	2	-	-	-
Previous quarter	32	6	-	4	8	1	12	2	4	1	-	21	4	-	4	13	-	-	3	1	-	-	-

C&S, cased and suspended; D, drilled; DA, drilling ahead; Sus, suspended; O&G, oil and gas; Un, unspecified; Ser, service well; JPDA: Joint Petroleum Development Area.

¹ Excludes wells drilling ahead or suspended. ² Indicates drilling has temporarily stopped before reaching final depth. ³ Classification applicable only to development wells.

⁴ Includes Territory of Ashmore and Cartier Islands.

Discoveries

Table 4 lists details of the reported discoveries of oil and gas during the year to 30 June 2005.

Table 4. Discoveries*, 1 January to 30 June 2005 (in order of discovery)

Operator	Field	Nature of discovery	Basin	State	Permit
Offshore					
Apache	Grayling	Gas	Gippsland	Vic	VIC/P54
Santos	Hurricane	Gas	Carnarvon	WA	WA208PR2
Woodside	Falcone	Gas	Carnarvon	WA	WA271PR1
Apache	Albert	Oil & Gas	Carnarvon	WA	TL/6
Origin	Halladale	Gas	Otway	Vic	VIC/P37(V)
ROC	Hadda	Oil	Perth	WA	WA325P
OMV	Lauda	Oil	Carnarvon	WA	WA290P
Origin	Black Watch	Gas	Otway	Vic	VIC/P37(V)
Apache	Remus	Oil	Carnarvon	WA	TL/6
BHP Billiton	Langdale	Gas	Carnarvon	WA	WA155P
Eni	Vesta	Gas	Bonaparte	NT	AC/P21
Onshore					
Beach	Coolum	Oil	Eromanga	Qld	ATP269P
Sunshine	Champagne Creek	Gas	Bowen	Qld	ATP768P
Stuart Pet.	Baystone	Oil	Eromanga	SA	PEL90
Santos	Dululu	Oil	Ereomanga	Qld	ATP259P
Origin	Ungabilla	Gas	Surat	Qld	ATP754P
Santos	Matrix	Gas	Cooper	Qld	ATP259P

*Subject to revision. † Inferred from logs only

Seismic survey activity

Offshore, there was no 2D seismic acquired during the June quarter 2005 (Table 5 & Figure 2). This was the same as the June quarter 2004. This has continued the decline from the 11540 km of the December quarter 2004, and the 5162 km acquired in the previous March quarter. 3D seismic surveys were conducted over 1344 km² during the March quarter 2005 within Western Australia. This was 1596 km² less than the March quarter 2005 total. These surveys were conducted in the Carnarvon Basin.

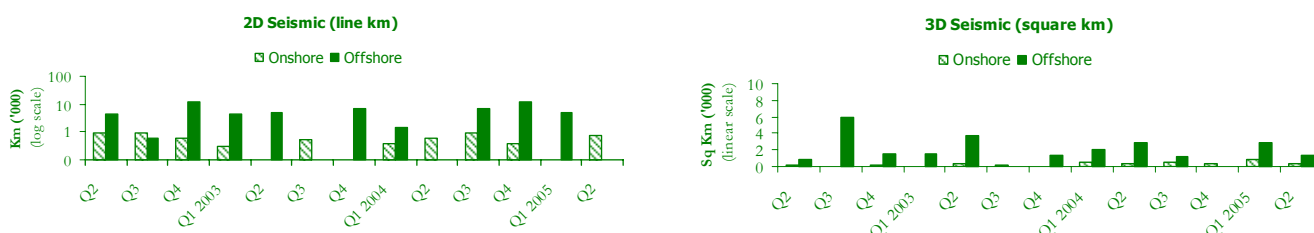
Onshore, a total of 751 km of 2D seismic was acquired during the June quarter 2005. This is only 185 km more than the June quarter 2004. The previous March quarter had no 2D seismic acquired. These surveys were conducted in the Carnarvon Basin. 3D seismic surveys were undertaken over 374 km², which is 556 km² less than the previous quarter. These surveys were carried out in the Cooper/Eromanga and Perth Basins.

Table 5. Seismic survey activity

State	2004				March Quarter 2005				June Quarter 2005			
	Onshore		Offshore		Onshore		Offshore		Onshore		Offshore	
	2D	3D km ²	2D	3D km ²	2D	3D km ²	2D	3D km ²	2D	3D km ²	2D	3D km ²
Qld	306	1553	-	-	-	666	-	-	-	228	-	-
NSW	543	110	1500	-	-	-	-	-	-	-	-	-
Vic	-	-	3881	-	-	-	359	2174	-	-	-	-
Tas	-	-	-	-	-	-	680	-	-	-	-	-
SA	1421	52	-	-	-	-	167	-	751	10	-	-
WA	-	-	9947	6030	-	264	3956	766	-	136	-	1344
NT	-	-	4724	-	-	-	-	-	-	-	-	-
JPDA*	-	-	-	-	-	-	-	-	-	-	-	-
Sub-total	2270	1715	20052	6030	-	930	5162	2940	751	374	-	1344
Grand <i>Line km</i>	22322				5162				751			
Total <i>Square km</i>	7745				3870				1718			

*JPDA: Joint Petroleum Development Area. Line: approx. Line km for 3D surveys † Revised.

Figure 2. Seismic survey activity: June Quarter 2002 to June Quarter 2005



Rig activity

The number of active rigs at the end of June 2005 was fourteen, five less than at the end of March 2005 (19) and one less than at the end of June 2004 (15). The number of active rigs during the quarter ranged from seventeen during April decreasing to fourteen active at the end of the quarter.

Offshore, the number of available rigs during the June quarter 2005 was down compared to the March quarter 2005, with eleven rigs available in April, ten in May and nine available in June. Rig availability for the June quarter 2005 has remained at the same levels compared to the previous March quarter and is slightly above that of the June quarter 2004. Active rigs were drilling in the Bonaparte, Carnarvon, Perth, and Otway Basins.

Onshore, the number of active rigs during the quarter ended June 2004 varied between six and seven, which is less than the previous quarter where it was between seven and nine active rigs. The Rig availability for the June quarter 2005 has also decreased compared to the March quarter 2005, but is consistent with the June quarter 2004. Activity for the quarter ranged from 50% to 43%. Active rigs were drilling in the Perth, Cooper/Eromanga, Bowen and Surat Basins.

Success rates

The success rates shown in Table 7 are based on the number of petroleum discoveries and new-field wildcat wells drilled in Australia onshore and offshore from 1992 to 2004. No assumptions have been made about whether a 'discovery' has proved or will prove to be commercial. Geoscience Australia defines a discovery as a well from which a measurable amount of oil or gas has been recovered and also includes those discoveries inferred from well logs.

Table 7. Success rates, 1992-2004

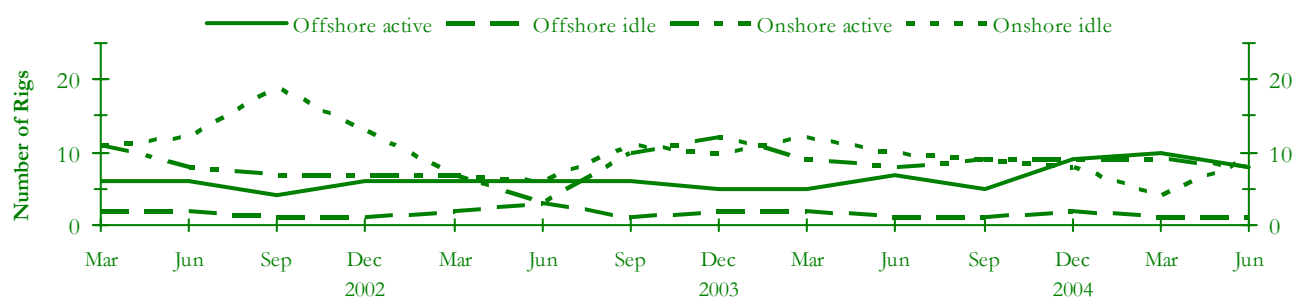
Year	Success Rate		
	Onshore	Offshore	Combined
1992	1:3.4	1:4.3	1:3.7
1993	1:3.4	1:3.5	1:3.4
1994	1:1.9	1:4.0	1:2.3
1995	1:2.8	1:4.7	1:3.4
1996	1:2.8	1:3.5	1:3.1
1997	1:2.1	1:4.6	1:2.6
1998	1:2.2	1:4.9	1:3.0
1999	1:4.0	1:4.0	1:4.0
2000	1:3.3	1:2.9	1:3.0
2001	1:1.9	1:4.0	1:2.6
2002	1:1.5	1:2.8	1:2.2
2003	1:3.5	1:7.1	1:5.2
2004	1:2.2	1:2.8	1:2.3

Table 6. Drilling rig activity, April 2004 to June 2005

	Active				Idle				Availability					
	Onshore		Offshore	Total	Onshore		Offshore	Total	Onshore		Offshore			
	S	M	D		(all deep)	S	M		D	(all deep)	Total	%Active	Total	%Active
Apr-04	0	1	8	6	15	3	3	4	2	12	19	47	8	75
May	0	1	9	7	17	3	3	3	1	10	19	53	8	88
Jun	0	1	7	7	15	3	3	4	1	11	18	44	8	88
Jul	0	1	6	6	13	2	3	4	1	10	16	44	7	86
Aug	0	3	7	6	16	3	3	3	1	10	19	53	7	86
Sep	0	2	7	5	14	2	4	3	1	10	18	50	6	83
Oct	0	2	9	7	18	2	2	3	3	10	18	61	10	70
Nov	0	3	9	8	20	1	2	3	2	8	18	67	10	80
Dec	0	2	7	9	18	1	3	4	2	10	17	53	11	82
Jan-05	0	1	6	10	17	1	2	2	1	6	12	58	11	91
Feb	0	2	7	8	16	2	2	2	1	7	14	57	9	89
Mar	0	2	7	10	19	1	2	2	1	6	14	64	11	91
Apr	0	2	5	10	17	1	3	3	1	8	14	50	11	91
May	0	2	4	9	15	1	4	2	1	8	13	46	10	90
Jun	0	1	5	8	14	2	3	3	1	9	14	43	9	89

S, shallow (<1525 m); M, medium (1525-2750 m); D, deep (>2750 m).

Figure 3. Drilling rig activity, March 2002 to June 2005



This publication includes preliminary statistics for wells and metres drilled, seismic survey line & square kilometres recorded and rig activity, to the end of June 2005.

The data from which these statistics are derived have been compiled by Geoscience Australia from various sources, including the petroleum exploration industry and State and Northern Territory departments of mines.

Queries concerning these statistics should be directed to Eugene Petric: Eugene.Petric@ga.gov.au; Ph. (02) 6249 9270 or Fax (02) 6249 9962.

This document is available on the Internet at <http://www.ga.gov.au/oceans/> and look under 'Petroleum Industry Statistics'.