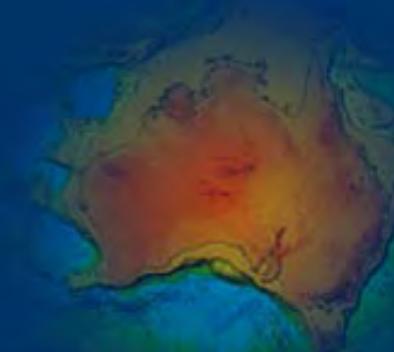


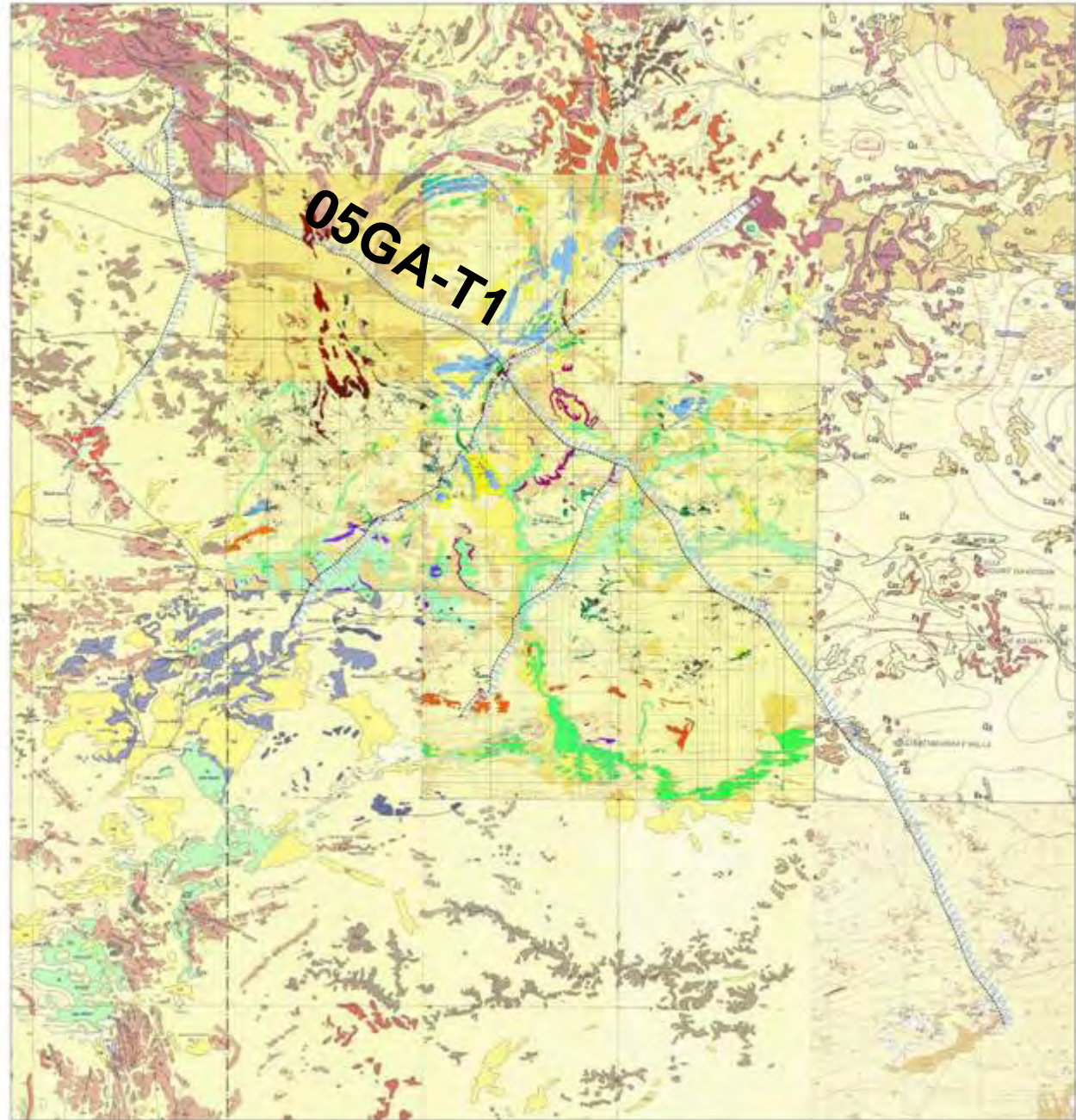
2005 Tanami Seismic Collaborative Research Project

Traverse 05GA-T1

Line	05GA-T1	05GA-T2	05GA-T3	05GA-T4
Direction	NW to SE	S to N	NE to SW	SW to NE
Length	354.28 km	101.80 km	179.24 km	84.40 km
Stations	925 – 9782	1000 – 3545	1008 - 5489	989 - 3099
CDP range	1850 – 19335	2001 – 6965	2016 - 10729	1979 - 6077
Vibration points	4429	1402	2361	1097
Record Length	20-24 s @ 2 ms	20 s @ 2 ms	20 s @ 2 ms	20 s @ 2 ms

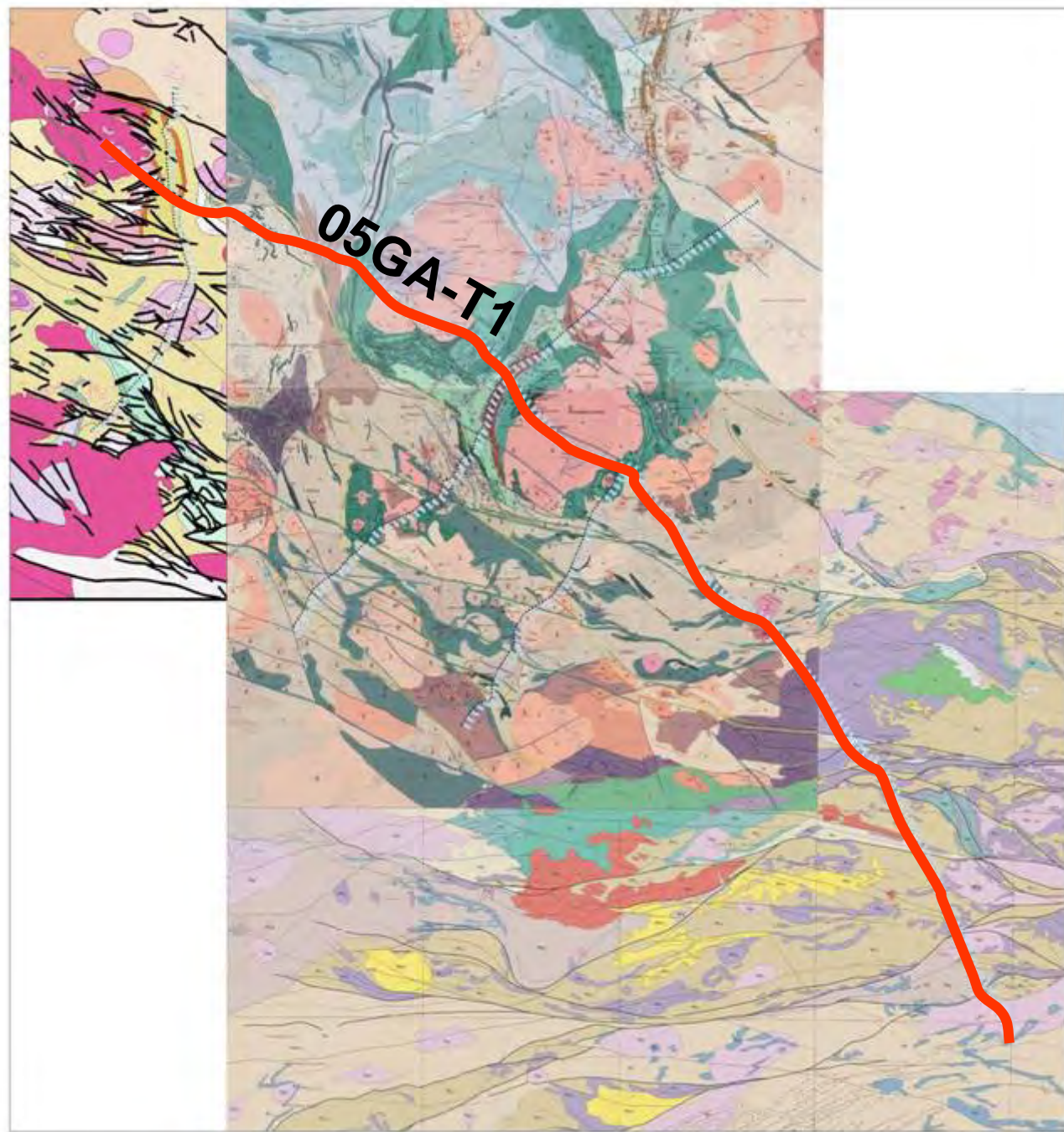


p7



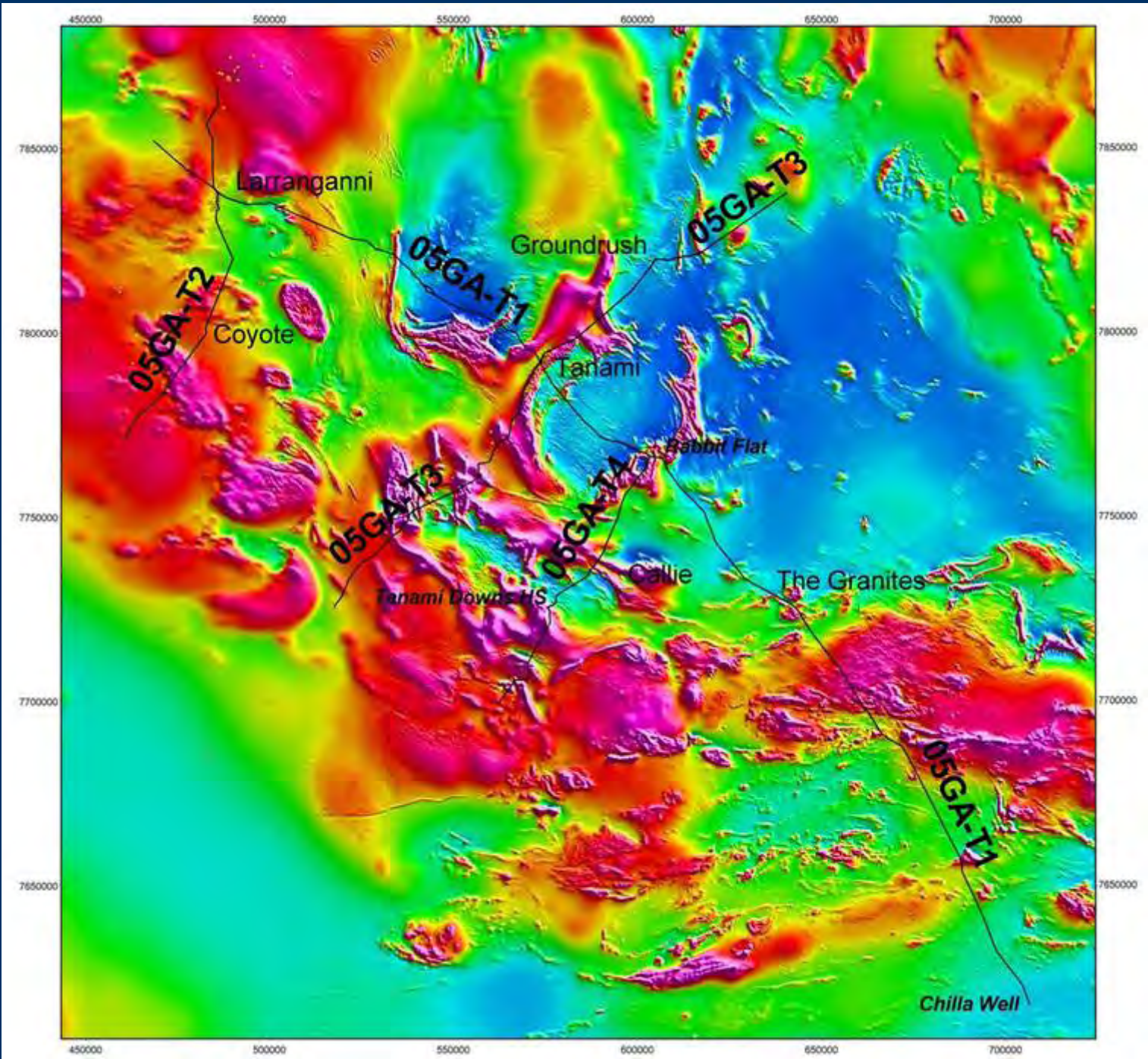
Outcrop Geology

p7



Interpreted Geology

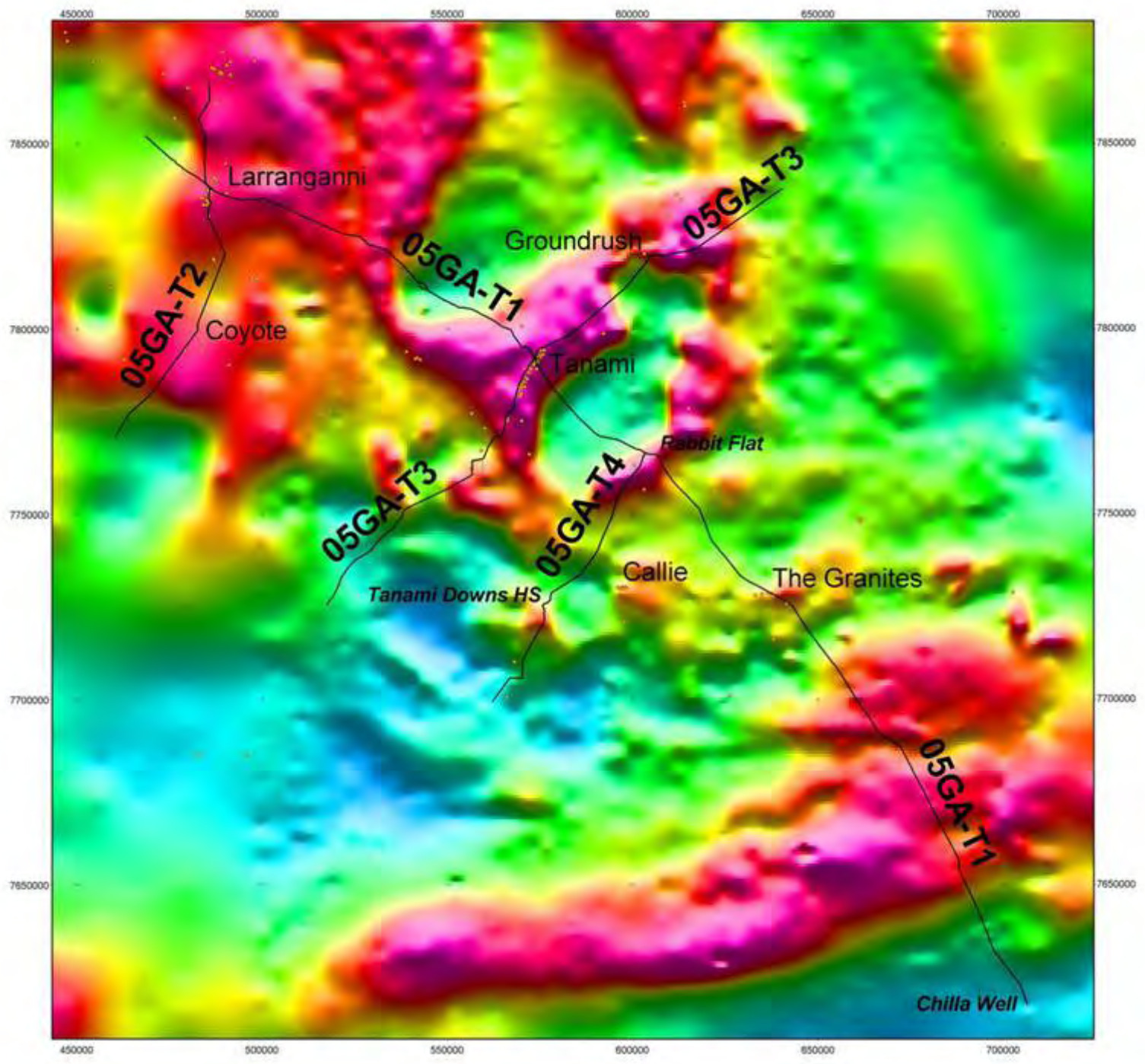
p6



Magnetics

p5

Gravity



p6



Radiometrics

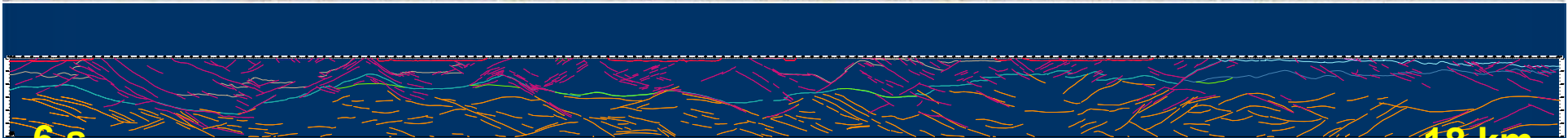
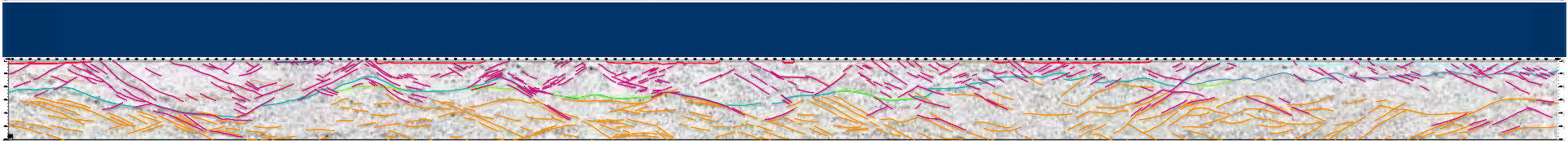
Interpretation Colour Chart

	Base of Younger Sediments
	Base of Canning Basin?
	Base of Antrim Volcanics
	Base of Reynolds Range Formation
	Base of Pargee-Birrindudu Group
	Base of Mount Charles Formation
	Base of Ware Gp – Killi Killi Formation
	Base of Lander Rock Beds
	Base of Dead Bullock Formation
	Base of Tanami Group
	Basal Decollement Surface
	Moho
	Base of Deep Crustal Reflection Trends
	Upper Crustal Faults – Shear Zones
	Base of Granite

2005 Tanami Seismic Collaborative Research Project

NW

SE



6 s

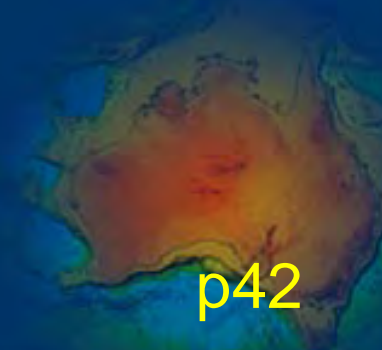
18 km

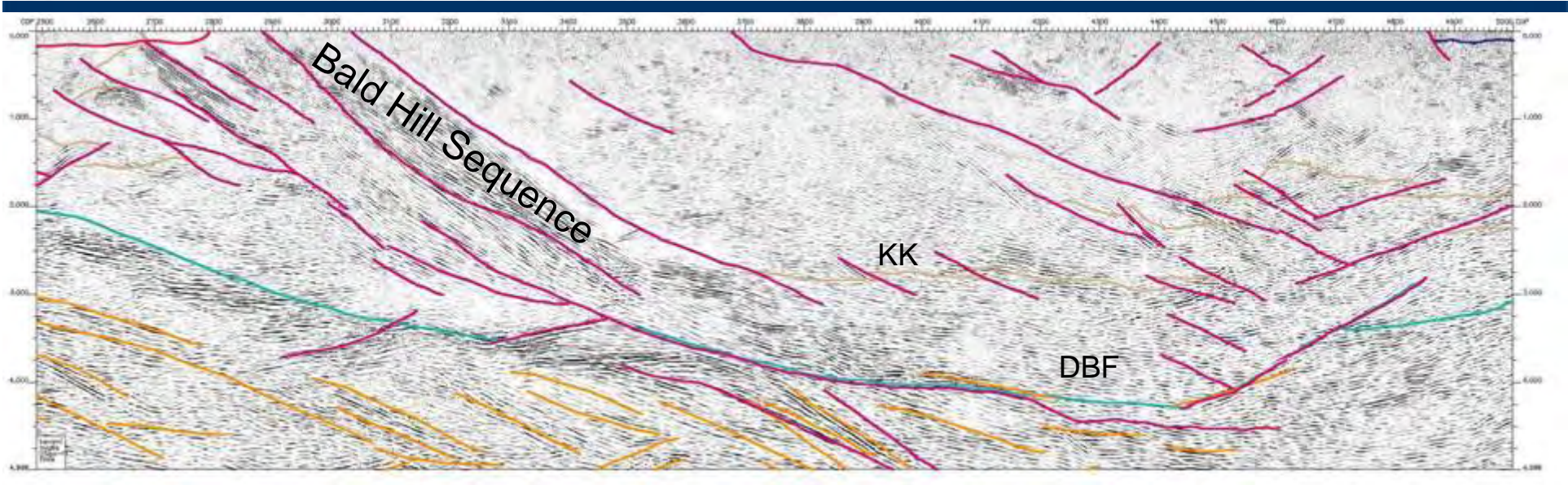
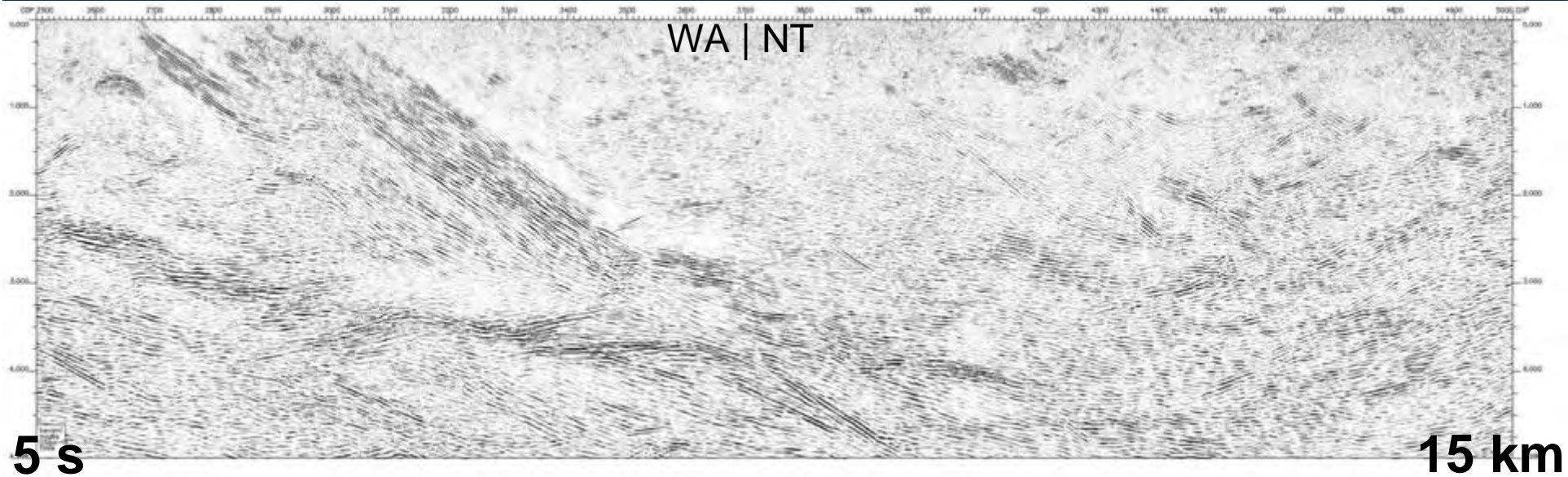
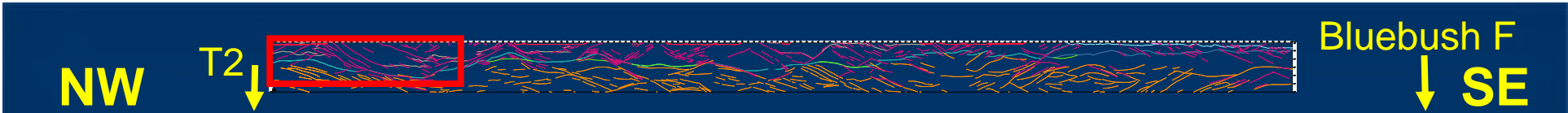
354.28 km

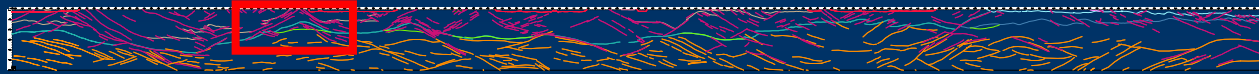
Traverse 05GA-T1

100 CDP= 2 km, V/H~1

p42



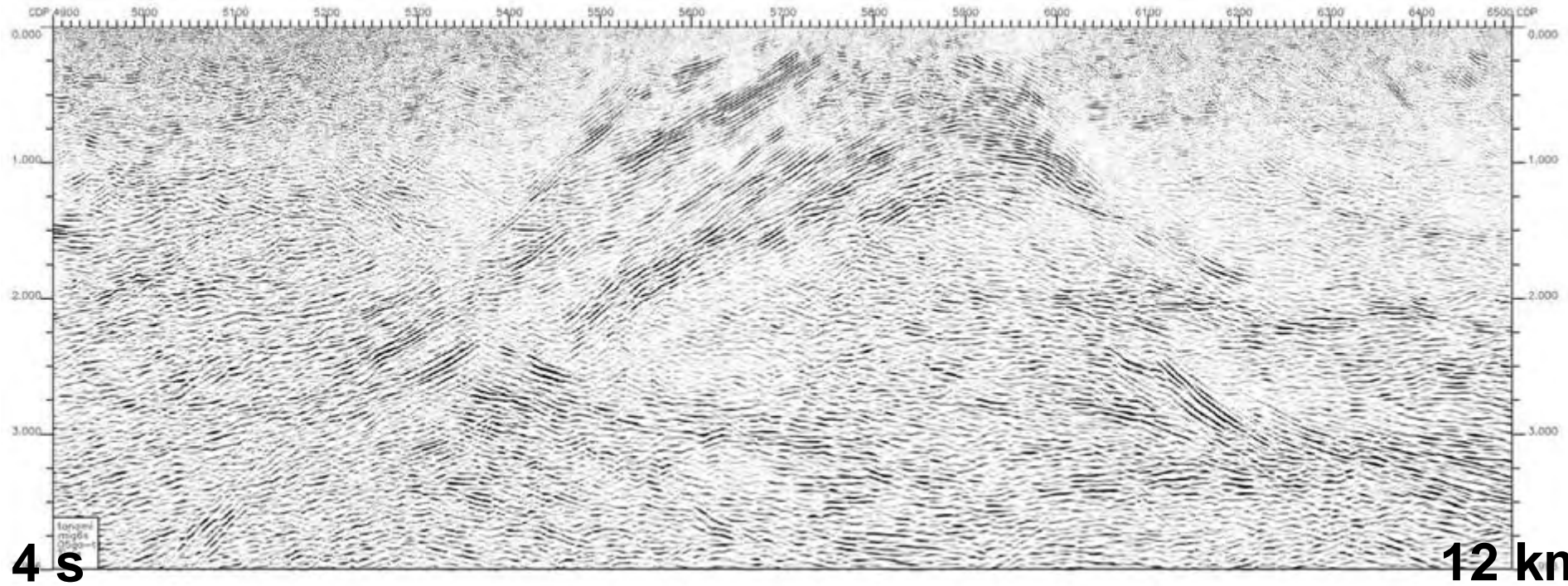




NW

Pargee R
↓

Coomarie granite **SE**

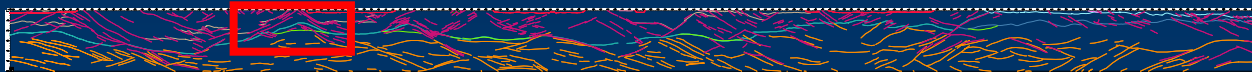


Traverse 05GA-T1

100 CDP= 2 km, V/H~1

p44



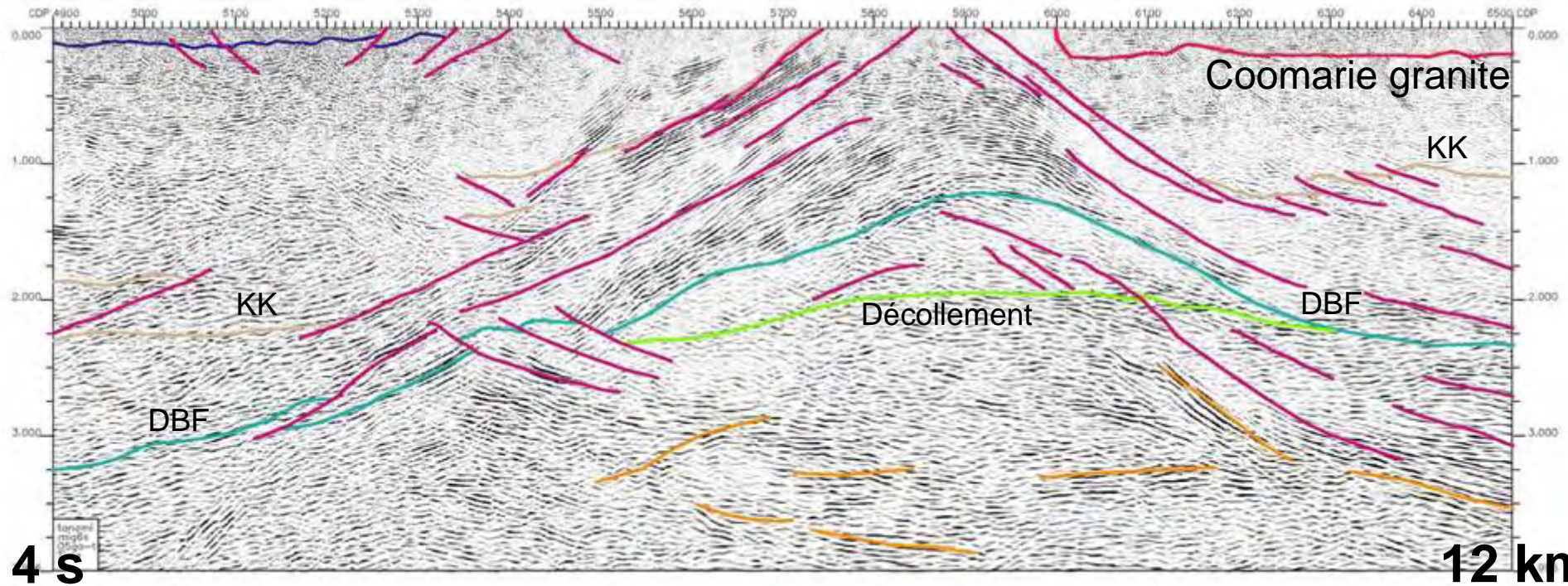


NW

Pargee R



SE

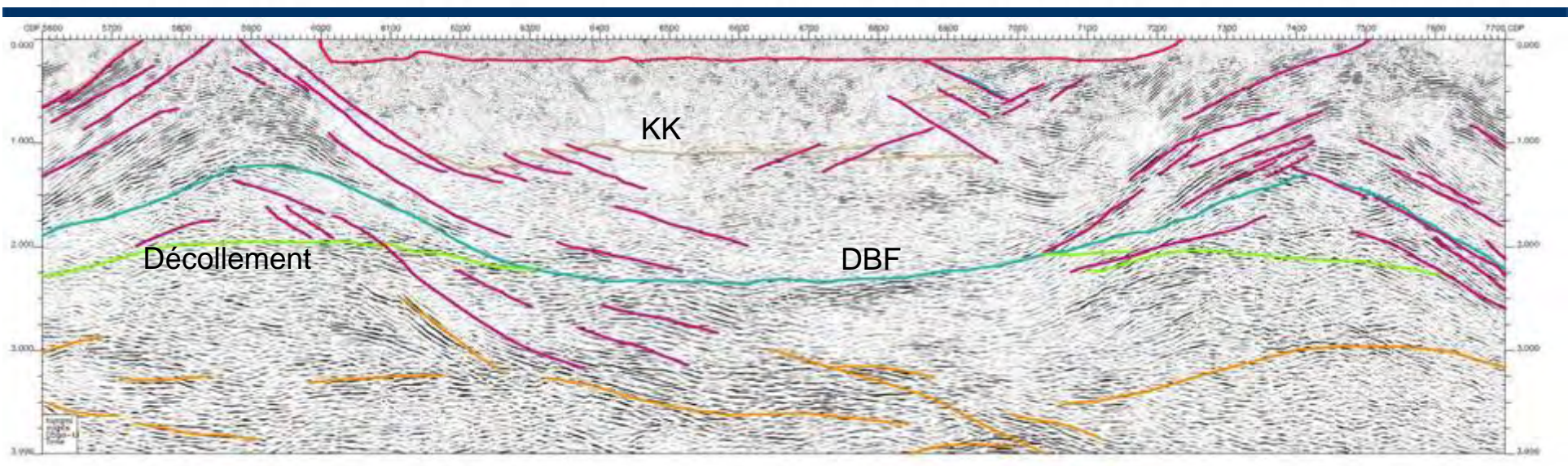
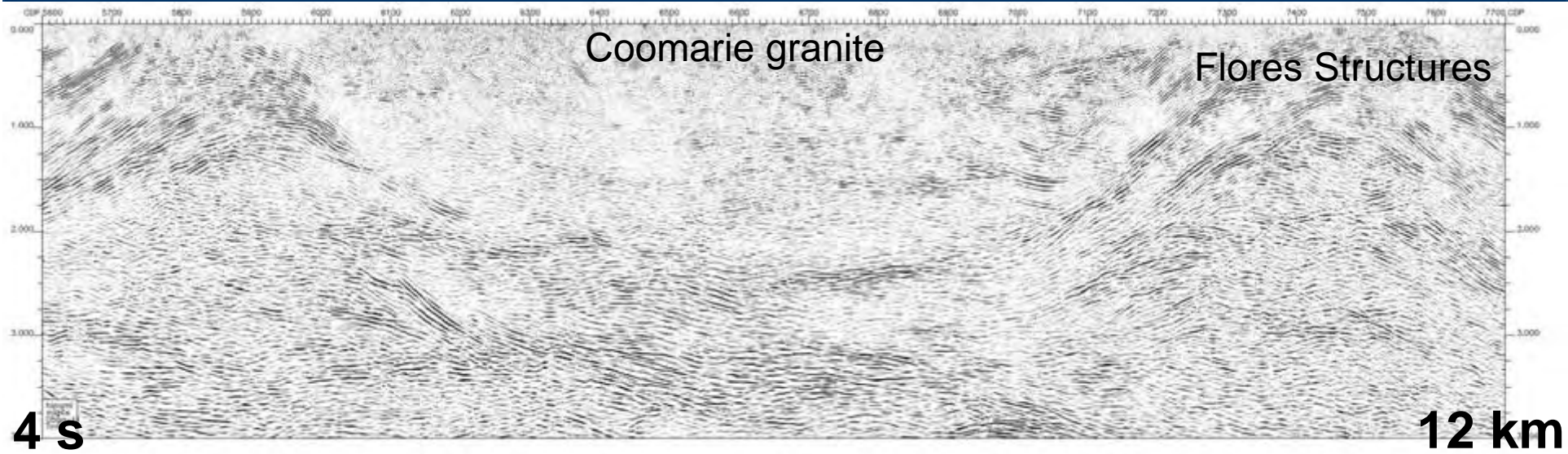
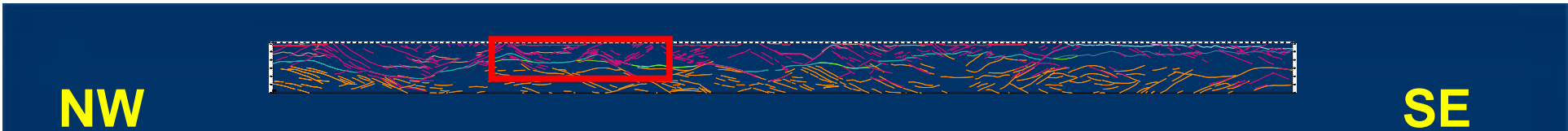


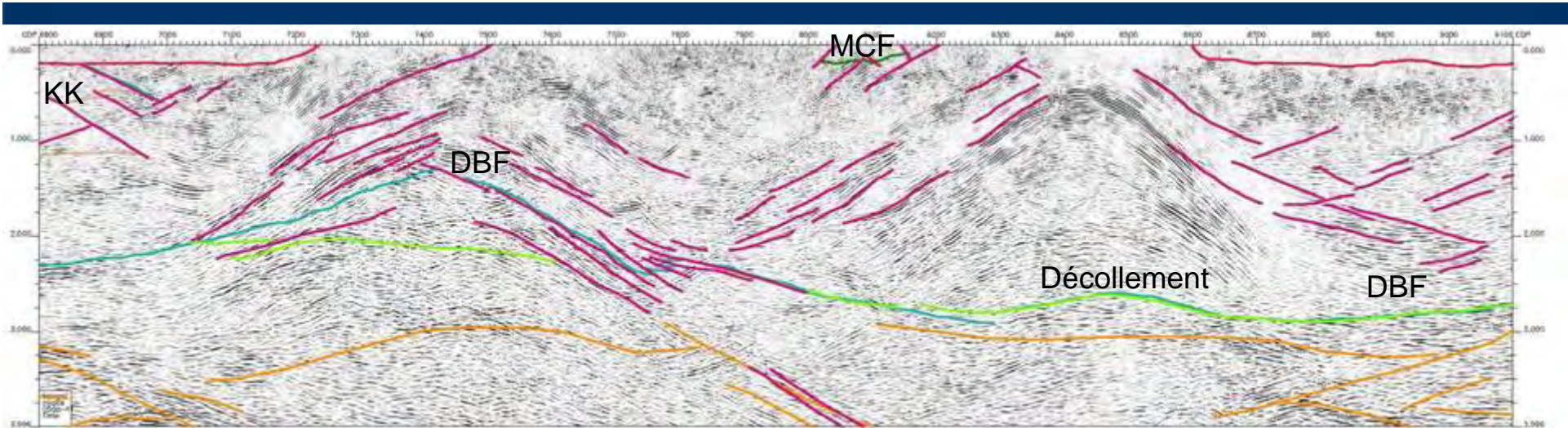
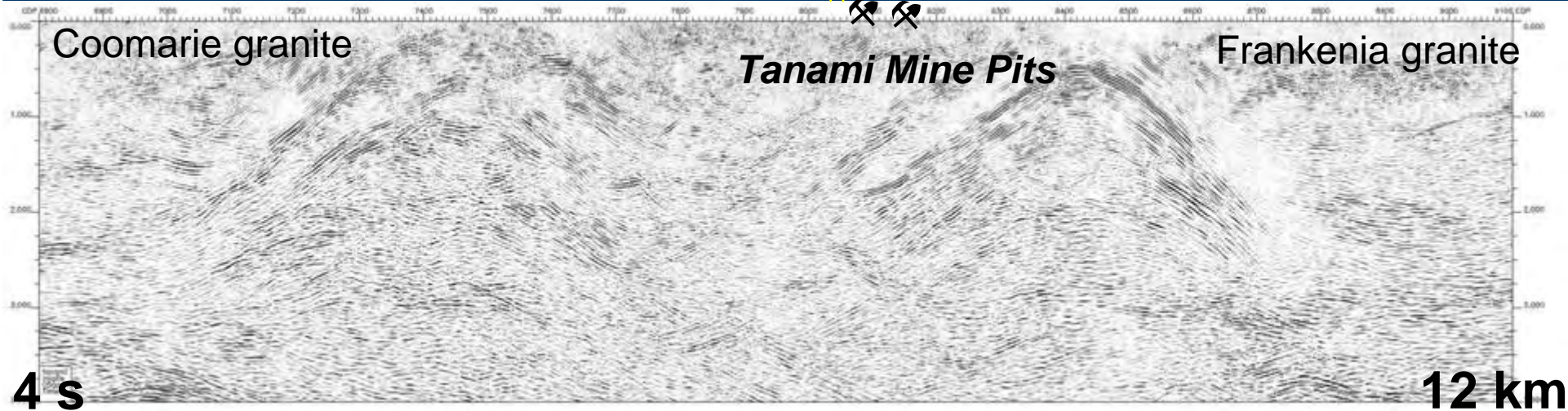
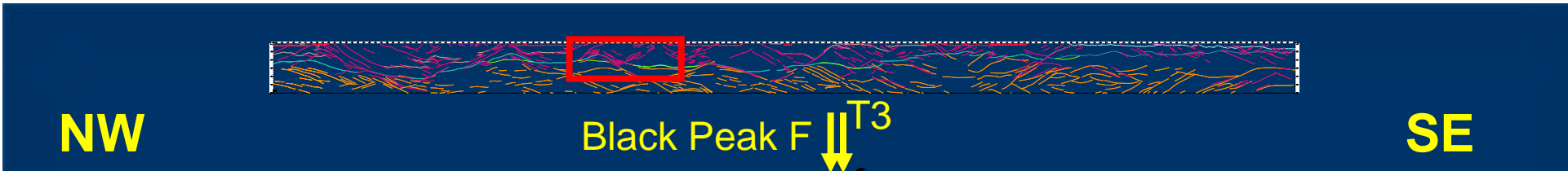
Traverse 05GA-T1

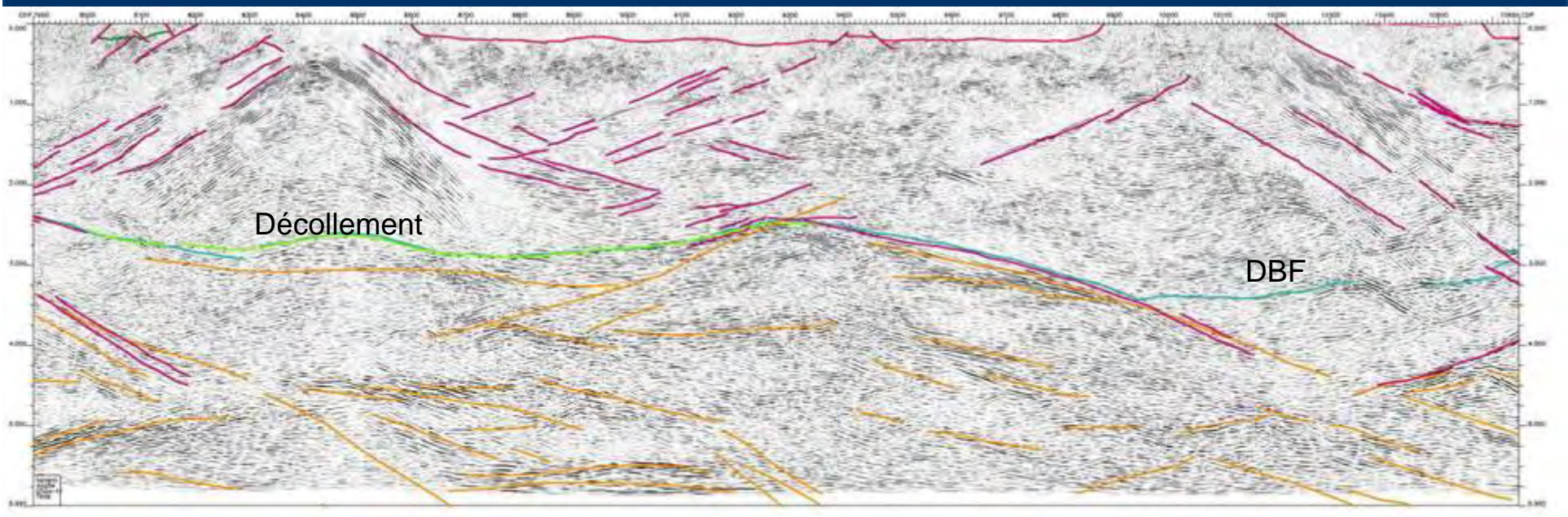
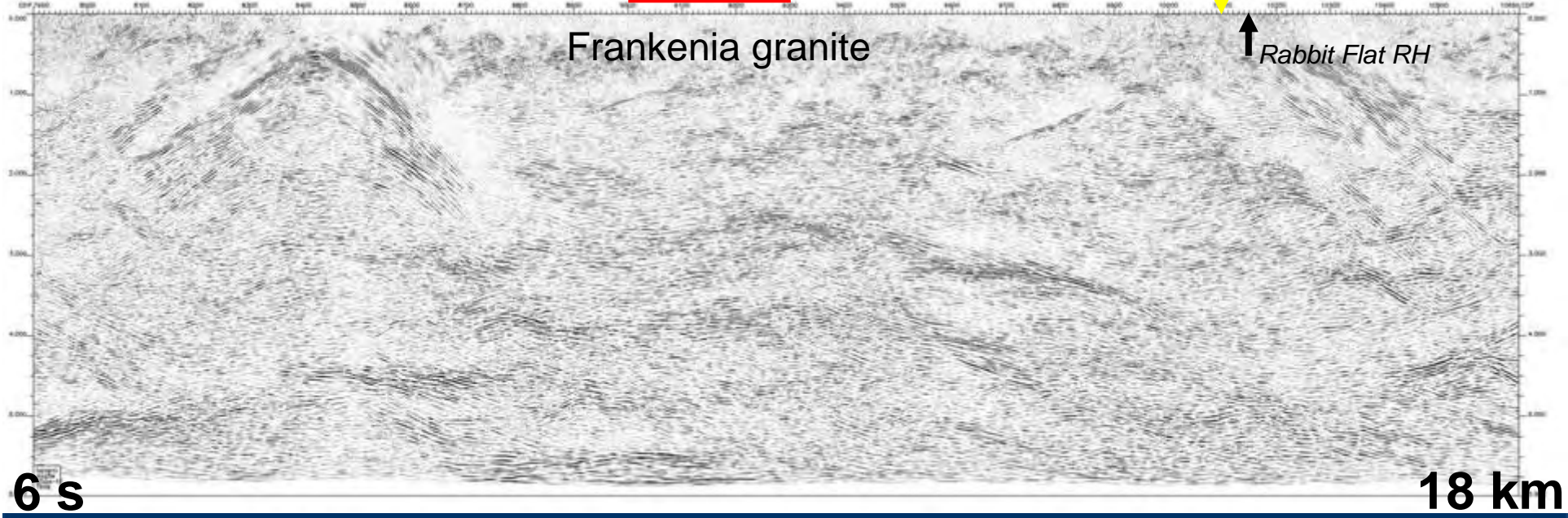
100 CDP= 2 km, V/H~1

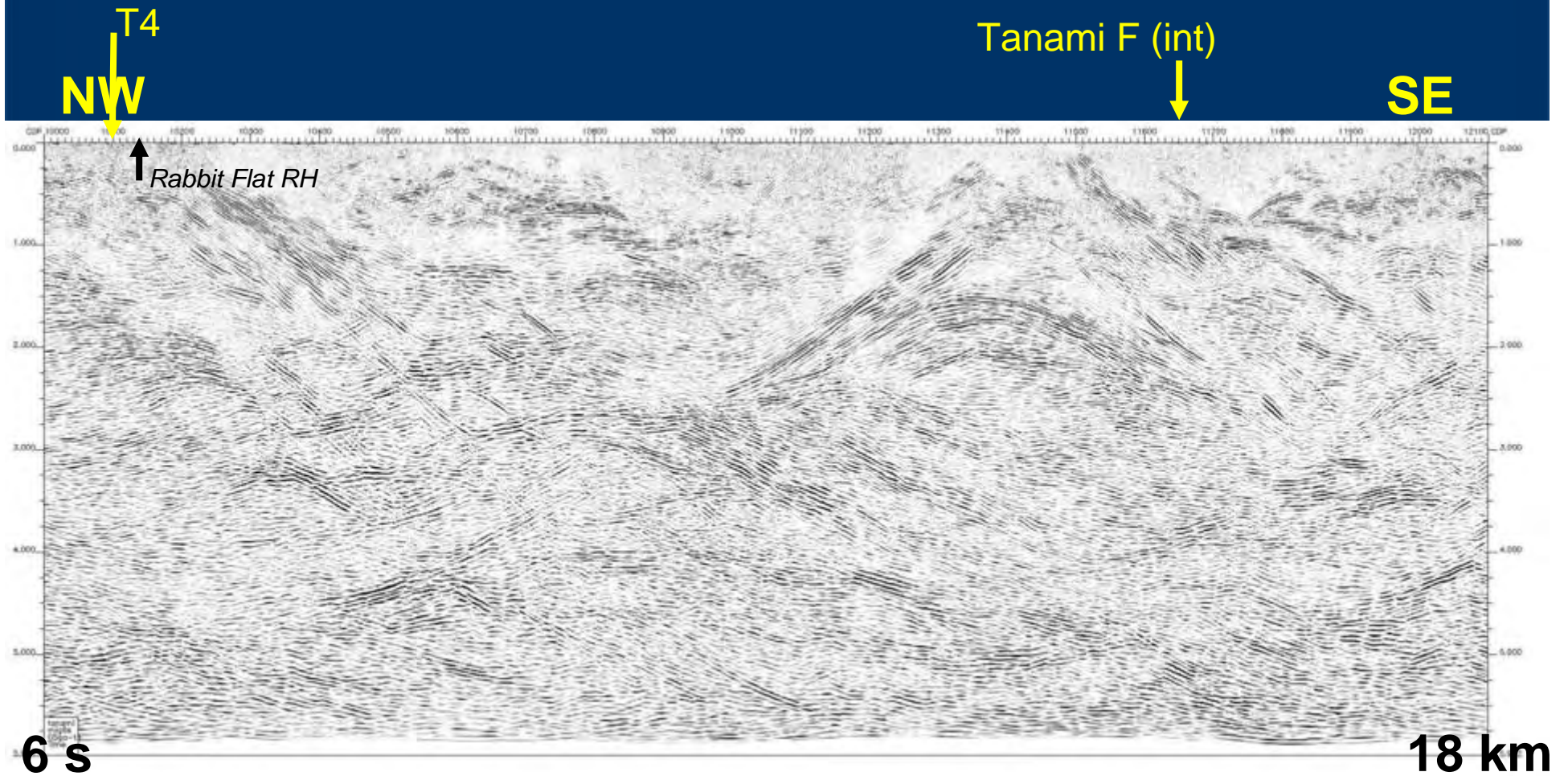
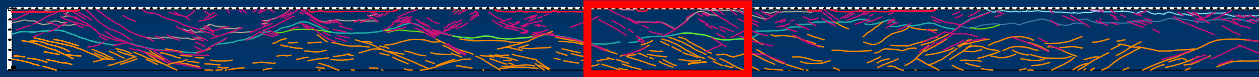
p44







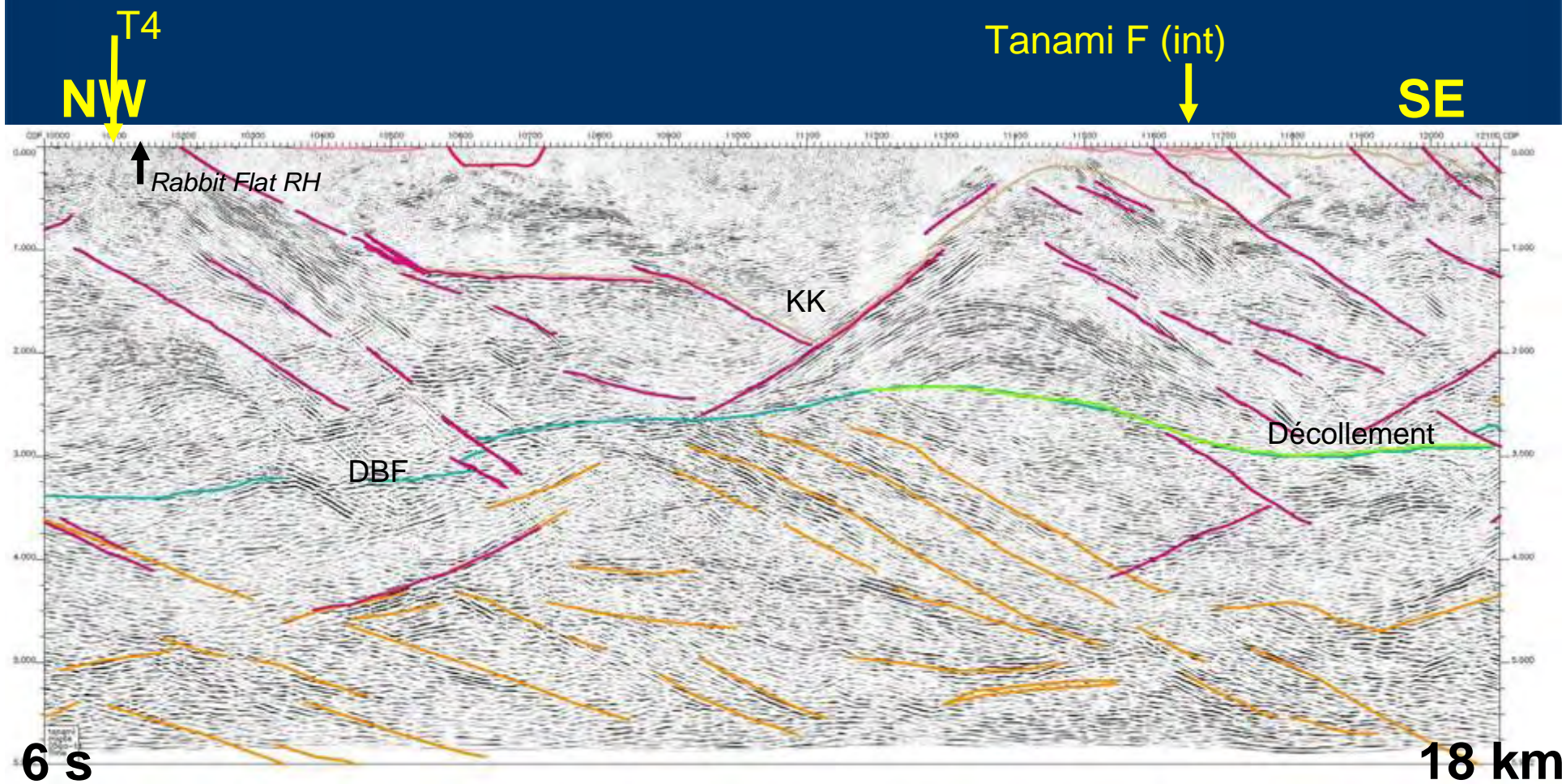




Traverse 05GA-T1

100 CDP= 2 km, V/H~1

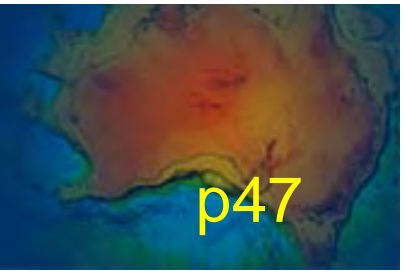
p47

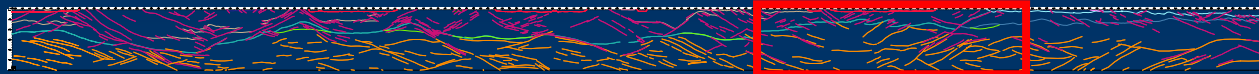


Traverse 05GA-T1

100 CDP= 2 km, V/H~1

p47





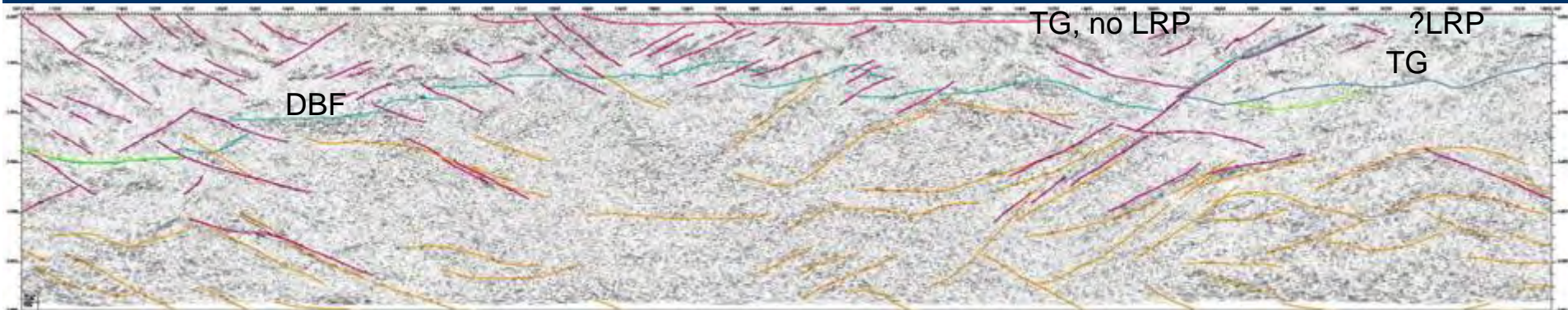
Gibbsmurray Hills
structures

Hordern Hills

The Granites

NW

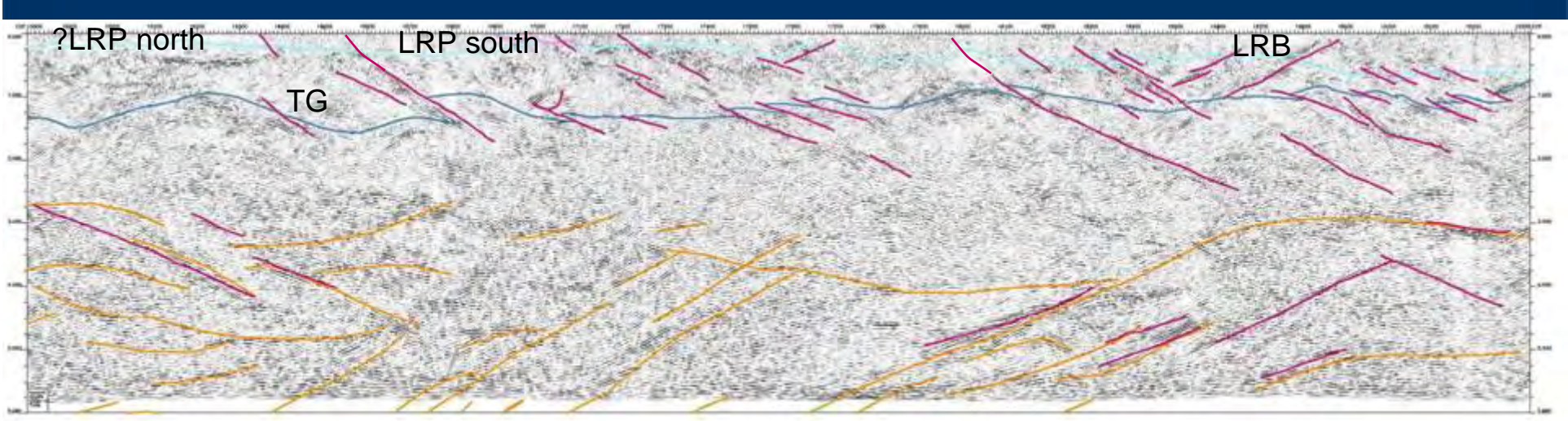
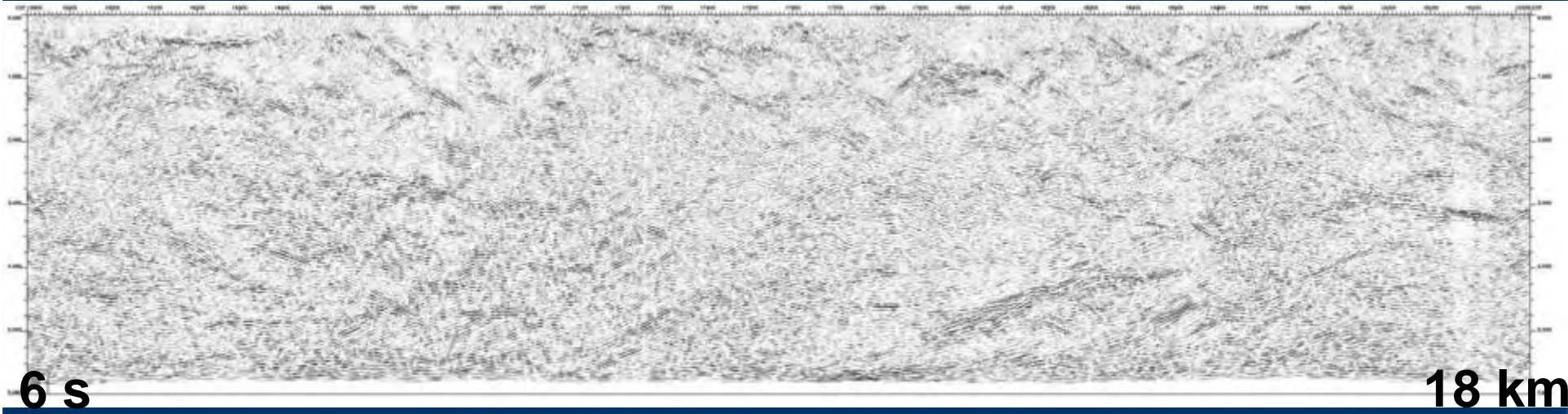
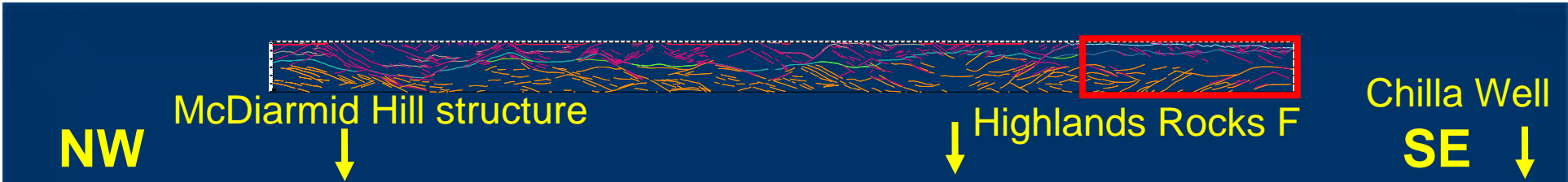
SE



Traverse 05GA-T1

100 CDP= 2 km, V/H~1

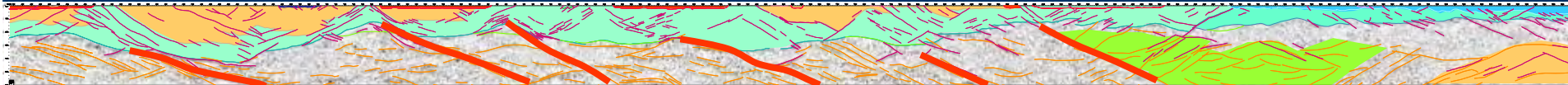
p48



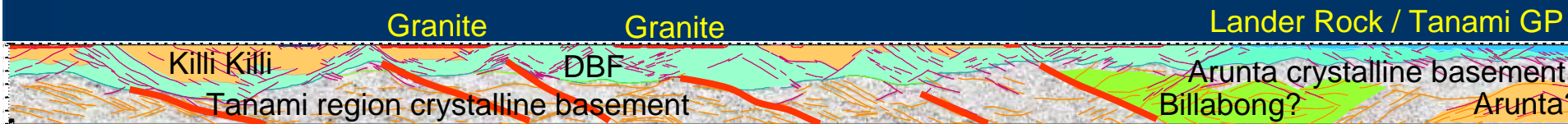
2005 Tanami Seismic Collaborative Research Project

NW

SE



354.28 km

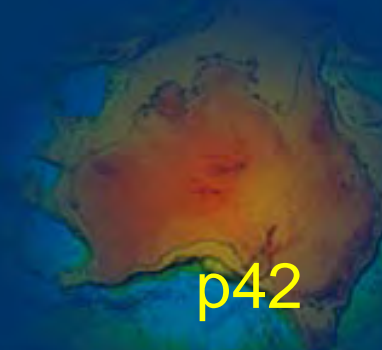


SE-dipping shear zones

Traverse 05GA-T1

100 CDP= 2 km, V/H~1

p42

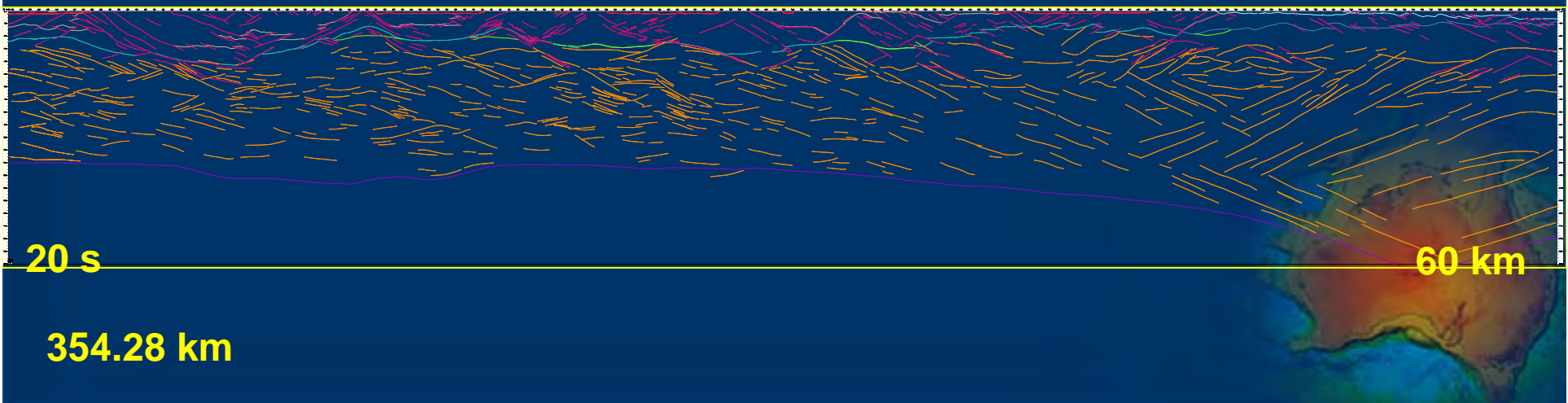


2005 Tanami Seismic Collaborative Research Project

NW

Traverse 05GA-T1

SE



20 s

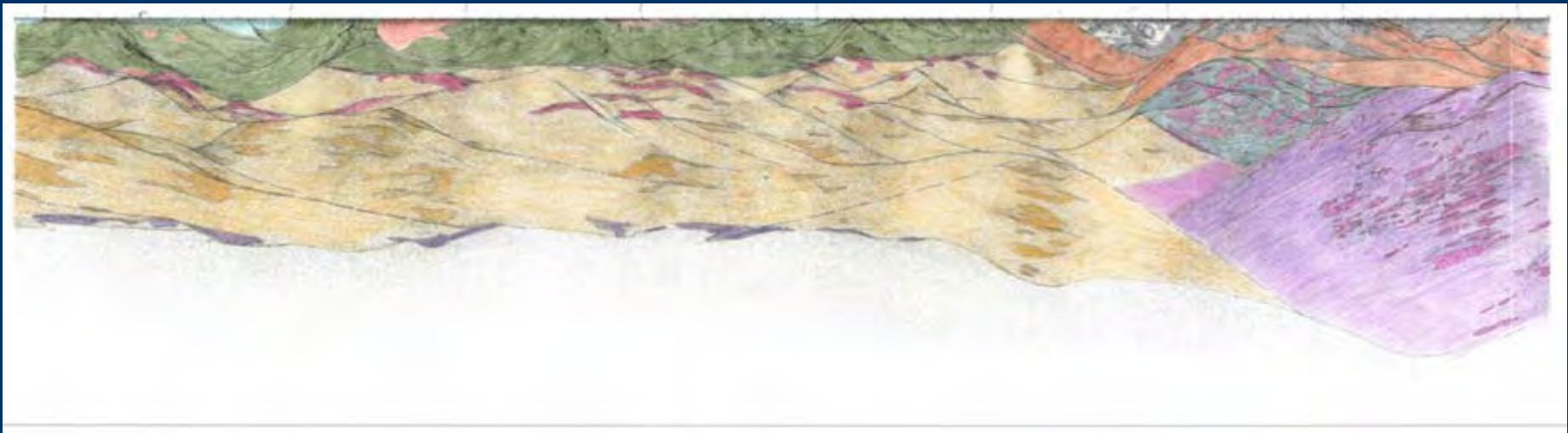
60 km

354.28 km

Traverse 05GA-T1

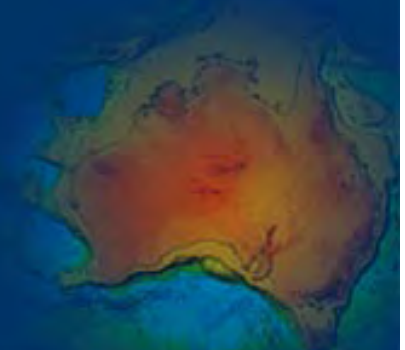
NW

SE



354.28 km

100 CDP= 2 km, V/H~1



Traverse 05GA-T1

NW

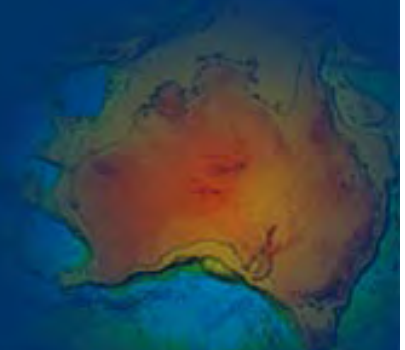
SE



354.28 km

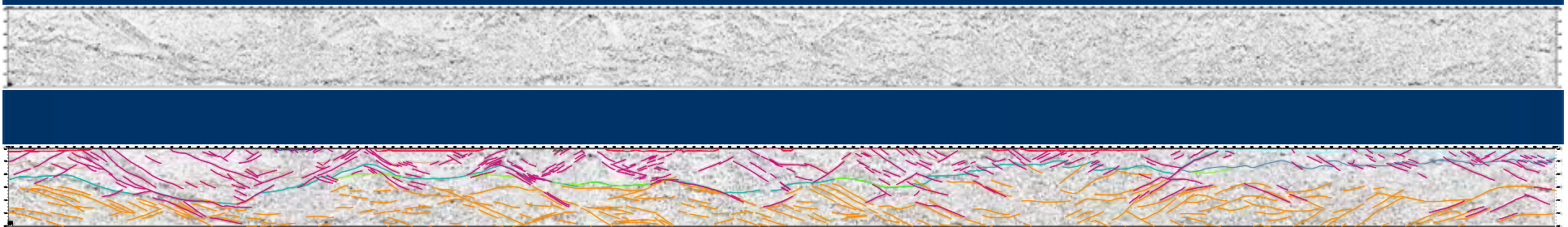
100 CDP= 2 km, V/H~1

Brett Davies, Newmont interpretation - background



NW

SE



Traverse 05GA-T1

100 CDP= 2 km, V/H~1

