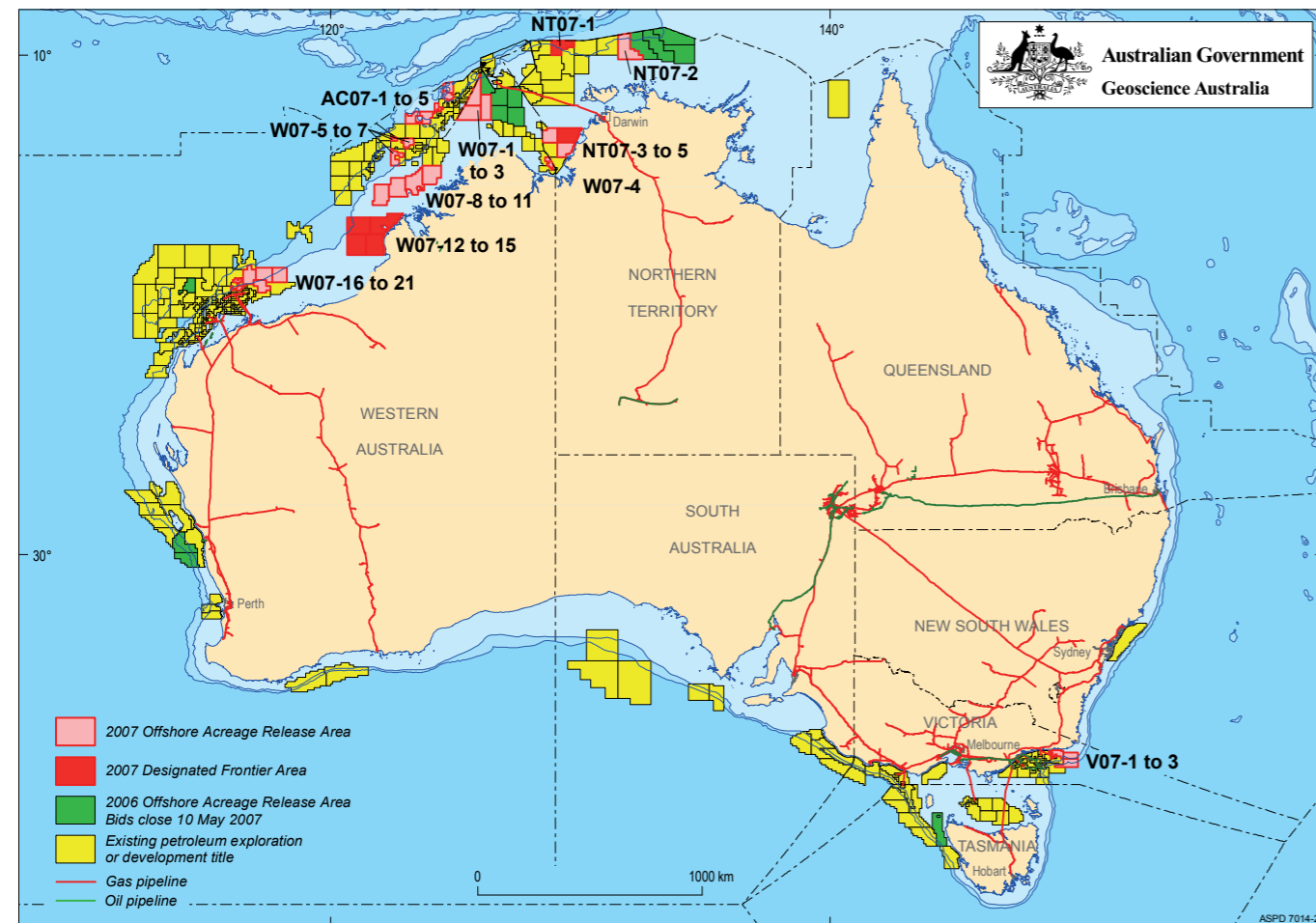


2007 Release of Offshore Petroleum Exploration Areas

The 2007 Offshore Petroleum Exploration Acreage release comprises 34 areas, located across six basins. The release areas range from frontier to mature status and offer opportunities for exploration companies of all sizes.

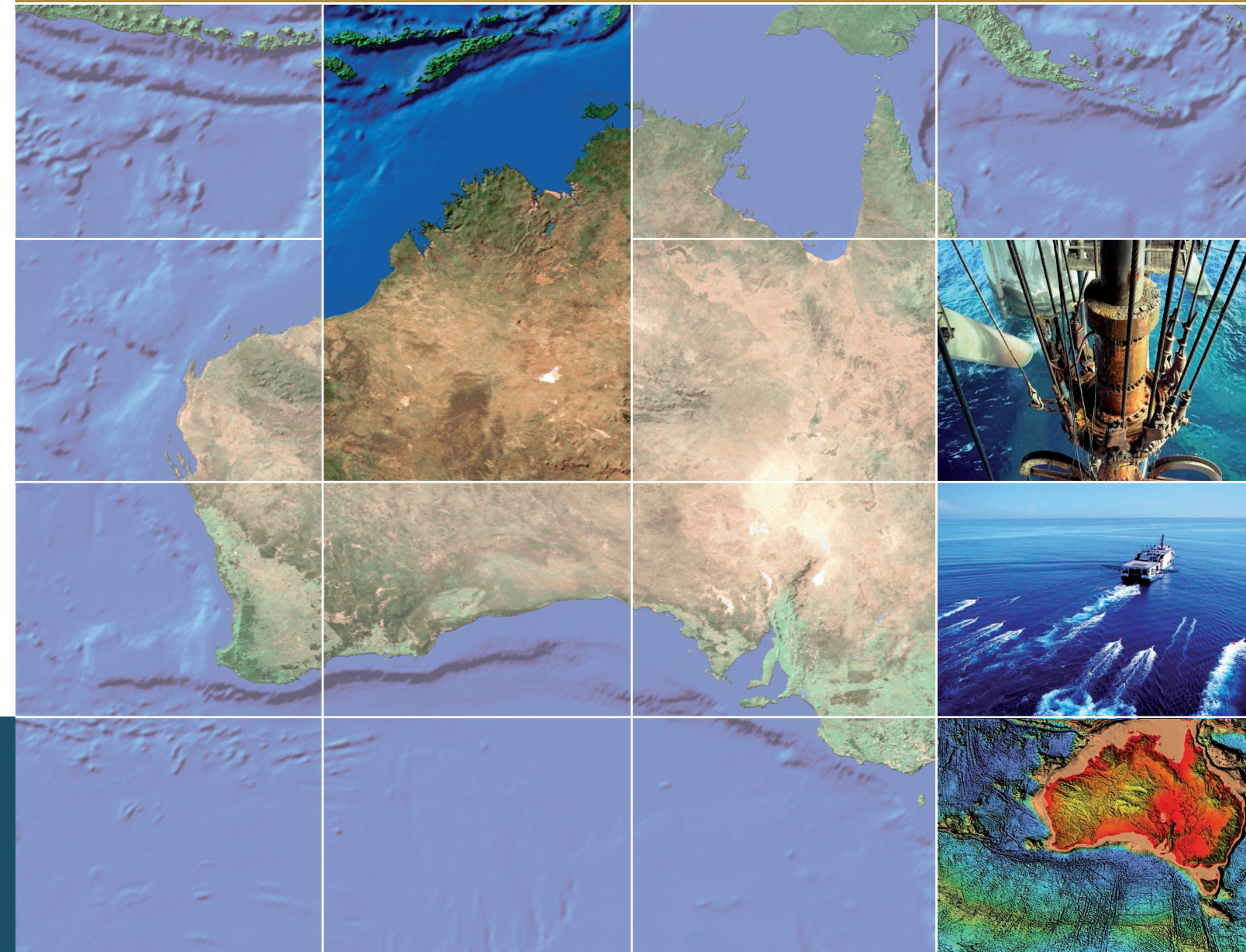
Comprehensive acreage release information packs can be obtained (free of charge) by emailing contact details to: petroleum.exploration@industry.gov.au



EXPLORE AUSTRALIA

CASWELL SUB-BASIN, BROWSE BASIN WESTERN AUSTRALIA

Areas W07-5, W07-6 and W07-7



FOR MORE INFORMATION CONTACT:

Mr Bob Pegler
General Manager
Offshore Resources Branch
Resources Division
Department of Industry, Tourism and Resources
GPO Box 9839, CANBERRA ACT 2601
AUSTRALIA
Telephone: +61 2 6213 7928
Facsimile: +61 2 6213 7955
E-mail: petroleum.exploration@industry.gov.au
Internet: www.industry.gov.au/petexp

FOR GEOSCIENTIFIC ENQUIRIES CONTACT:

Dr Clinton Foster
Chief of Division
Petroleum & Marine Division
Geoscience Australia
GPO Box 378, CANBERRA ACT 2601
AUSTRALIA
Telephone: +61 2 6249 9447
Facsimile: +61 2 6249 9933
E-mail: Clinton.Foster@ga.gov.au
Internet: www.ga.gov.au

BIDS CLOSE 18 OCTOBER 2007



Australian Government
Geoscience Australia

Current Exploration Opportunities in the Caswell Sub-basin, Browse Basin, Offshore Australia.

Open for bids until 18 October 2007

Areas W07-5, W07-6 and W07-7

- Proven major hydrocarbon province, and adjacent to giant gas fields; Scott Reef (Torosa), Brecknock, Brecknock South (Calliance), and Brewster area (Ichthys), where aggressive appraisal drilling programs are underway.
- Early–Middle Jurassic (Plover Formation) and Early Cretaceous (upper Vulcan, Echuca Shoals) source rocks.
- Good quality Early–Middle Jurassic (Plover Formation) reservoir.
- Tilted Permo-Triassic to Jurassic horst blocks with Early Cretaceous seal.
- Water depths between 200 and 500 m.
- Special Notices apply, refer to Guidance Notes

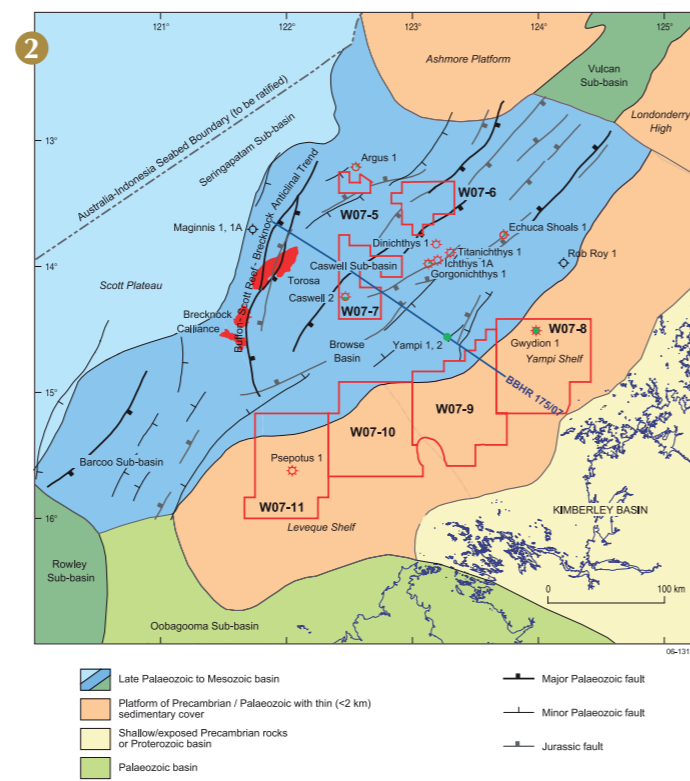
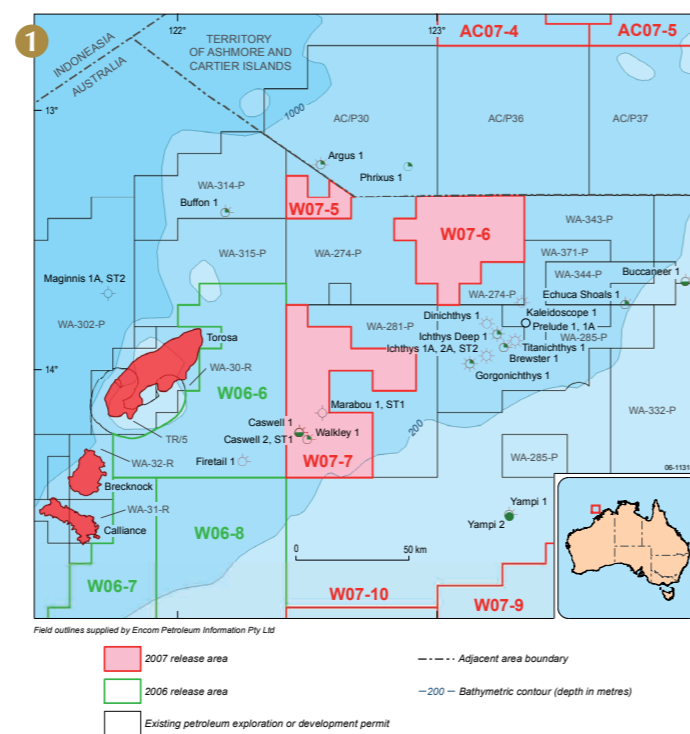
Geoscience Australia Reports/Products

New Reports/Products

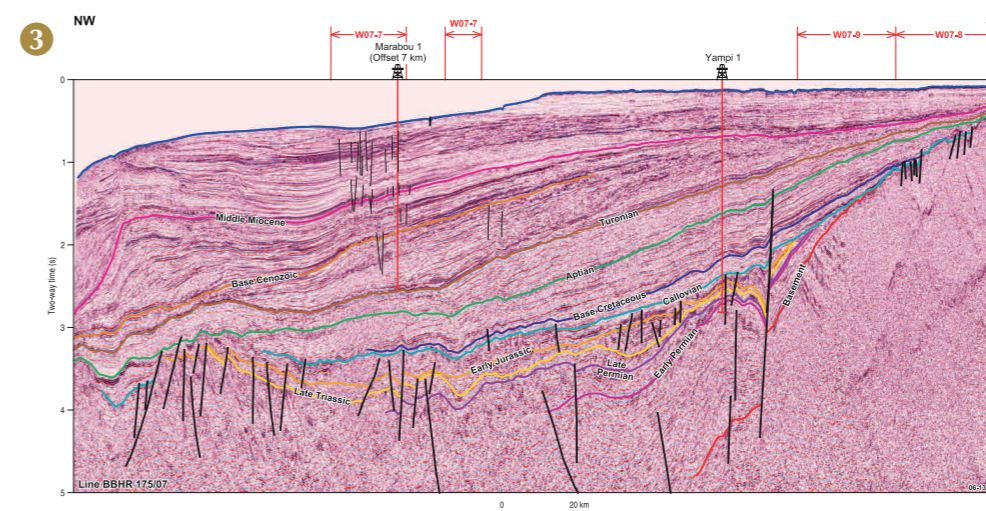
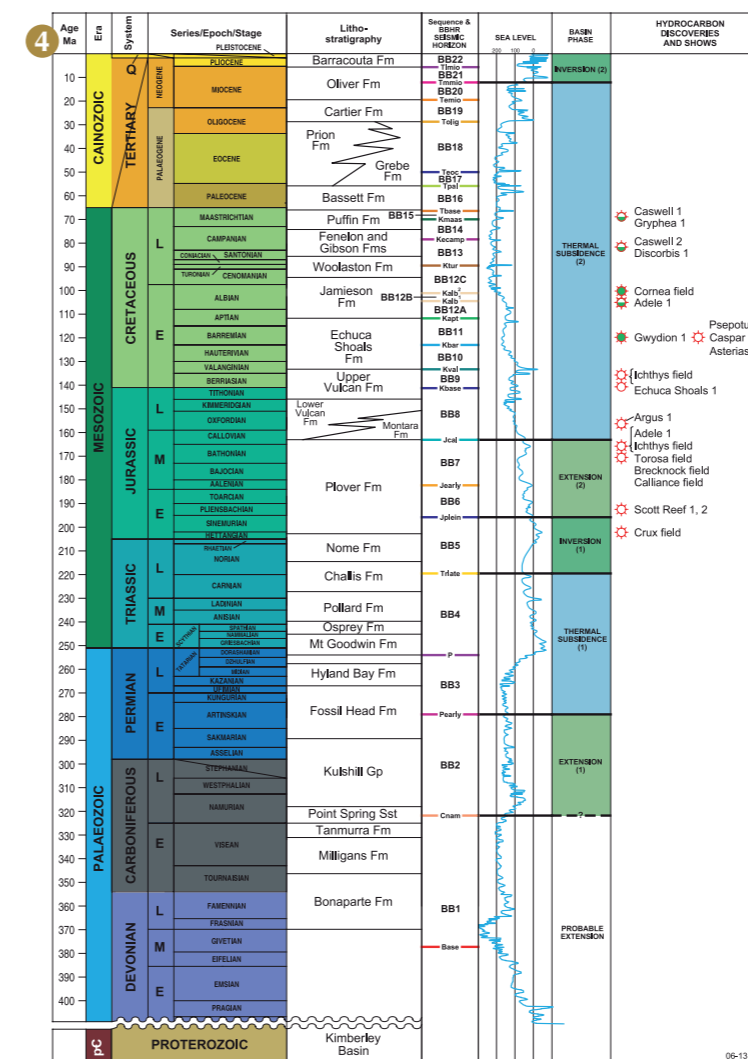
- Browse Basin Composite Well Logs (2005), GA Catalog No. 61819.
- Oils of Western Australia II: Regional Petroleum Geochemistry and correlation of crude oils and condensates from Western Australia and Papua New Guinea (GA and GeoMark Research, 2005).
- Source rock time-slice maps (TOC, HI, VR), offshore Northwest Australia - 1:3,000,000 scale. GA Catalog No. 61179.
- Testing natural hydrocarbon seepage detection tools on the Yampi Shelf, northwestern Australia. GA Catalog No. 61717

Other Reports/Products

- Browse Basin Biozonation and Stratigraphy Chart 7 (2001). GA Catalog No 36593
- Browse Basin high-resolution seismic survey BBHR-175, and Interpretation Report. GA Record 1997/38.
- Browse Basin Organic Geochemistry Study. GA Record 1997/57.
- Characterisation of Natural Gases from West Australian Basins: Browse Basin Module (GA and Geotechnical Services Non-exclusive Study, 2000).
- Interpretations of Geoscience Australia's regional deep-seismic data, Survey 119, 130 (2001) – digital horizon and fault data in ASCII format. GA Catalog No. 35244, 35248.
- Interpretative Study of Hydrocarbon Migration and Seepage in the Timor Sea and Northern Browse Basin (2001). GIS format (ArcView) on CD. GA Catalog No. 35246.



Contact Geoscience Australia's Sales Centre for more information or to order these reports or products, phone 61 (0)2 6249 9966, e-mail sales@ga.gov.au



CASWELL SUB-BASIN PETROLEUM PLAY ELEMENTS

Play Element	Source	Reservoir	Seal	Traps	Infrastructure and Markets
Source	Plover Formation (Early to Middle Jurassic), Vulcan Formation (Late Jurassic), Echuca Shoals and Jamieson Formations (Early Cretaceous),				
Reservoir		Plover Formation (Early to Middle Jurassic), Vulcan Formation (Middle Jurassic to Early Cretaceous), Echuca Shoals Formation (Early Cretaceous).			
Seal			Vulcan Formation (Middle Jurassic to Early Cretaceous) and Echuca Shoals Formation (Early Cretaceous) regional seals. Plover Formation (Early to Middle Jurassic).		
Traps				Faulted anticlines, horsts/tilted fault blocks, drape anticlines and stratigraphic traps.	
Infrastructure and Markets					Likely region for future gas development, with development plans and Brewster/Ichthys field and appraisal drilling of Calliance and Torosa fields.

1. Location map of areas W07-5 to W07-8 in the Caswell Sub-basin, Browse Basin showing existing petroleum title areas and known petroleum fields and discoveries.
2. Regional setting of the Browse Basin also showing the location of seismic line BBHR 175/7 (Fig 3).
3. Seismic line BBHR 175/7 through Marabou 1, central Caswell Sub-basin to Yampi 1 on the Yampi Shelf.
4. Tectonostratigraphic summary and hydrocarbon discoveries for the Browse Basin.