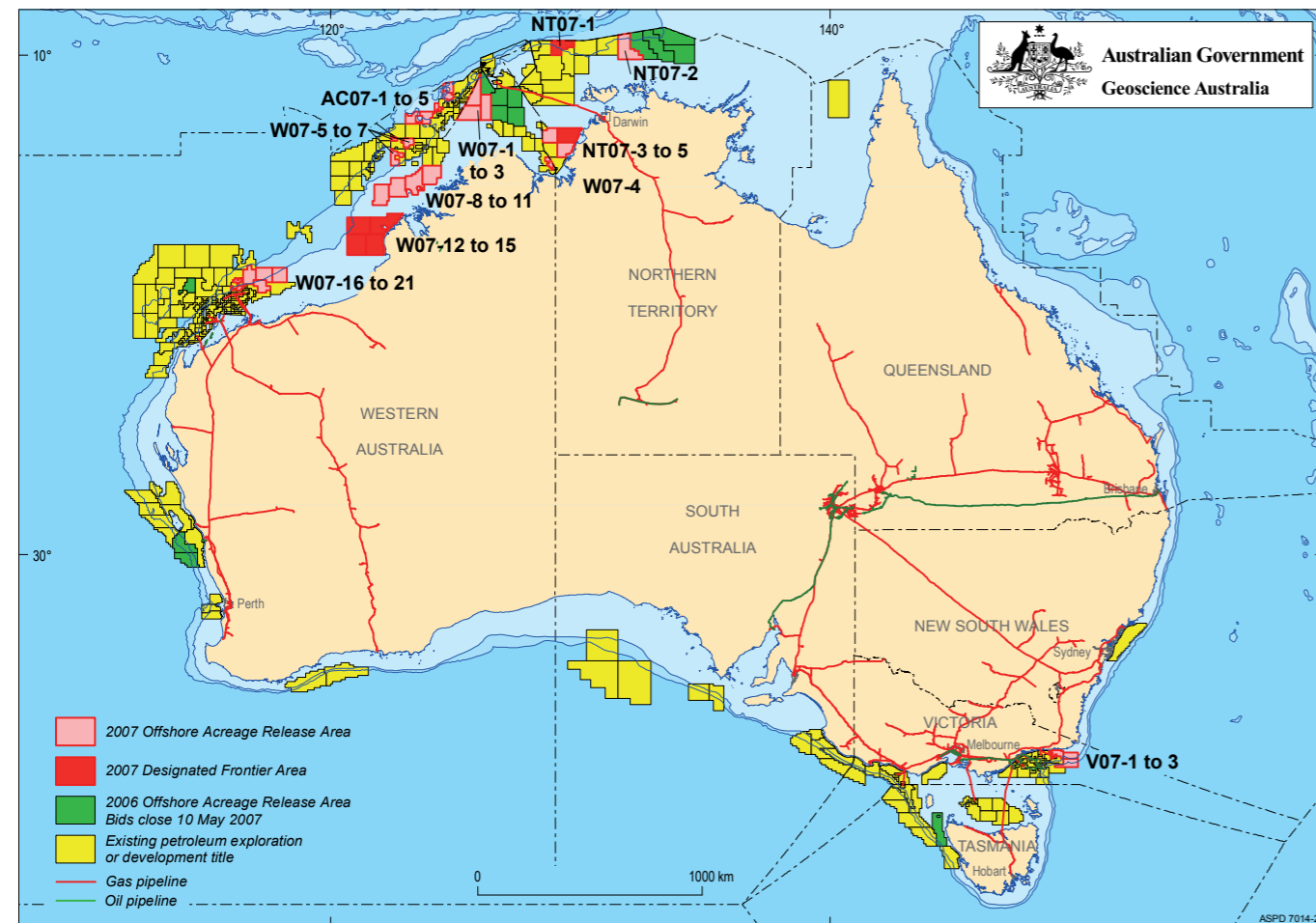


## 2007 Release of Offshore Petroleum Exploration Areas

The 2007 Offshore Petroleum Exploration Acreage release comprises 34 areas, located across six basins. The release areas range from frontier to mature status and offer opportunities for exploration companies of all sizes.

Comprehensive acreage release information packs can be obtained (free of charge) by emailing contact details to: [petroleum.exploration@industry.gov.au](mailto:petroleum.exploration@industry.gov.au)

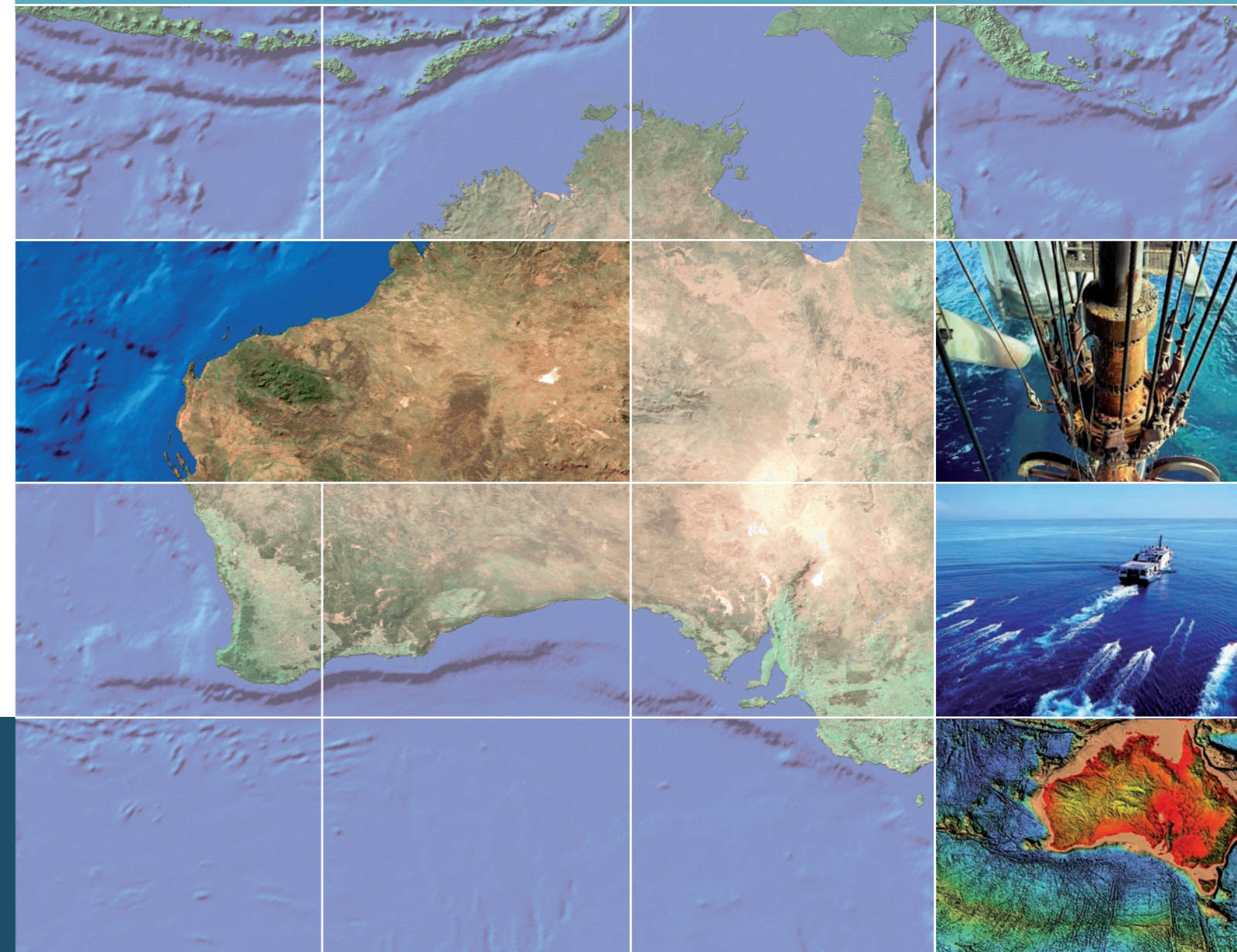


# EXPLORE AUSTRALIA

## OFFSHORE CANNING BASIN, WESTERN AUSTRALIA

Areas W07-12, W07-13, W07-14 AND W07-15

Designated Frontier Tax Concession applies to all four areas



### FOR MORE INFORMATION CONTACT:

Mr Bob Pegler  
General Manager  
Offshore Resources Branch  
Resources Division  
Department of Industry, Tourism and Resources  
GPO Box 9839, CANBERRA ACT 2601  
AUSTRALIA  
Telephone: +61 2 6213 7928  
Facsimile: +61 2 6213 7955  
E-mail: [petroleum.exploration@industry.gov.au](mailto:petroleum.exploration@industry.gov.au)  
Internet: [www.industry.gov.au/petexp](http://www.industry.gov.au/petexp)

### FOR GEOSCIENTIFIC ENQUIRIES CONTACT:

Dr Clinton Foster  
Chief of Division  
Petroleum & Marine Division  
Geoscience Australia  
GPO Box 378, CANBERRA ACT 2601  
AUSTRALIA  
Telephone: +61 2 6249 9447  
Facsimile: +61 2 6249 9933  
E-mail: [Clinton.Foster@ga.gov.au](mailto:Clinton.Foster@ga.gov.au)  
Internet: [www.ga.gov.au](http://www.ga.gov.au)

## BIDS CLOSE 17 APRIL 2008



Australian Government  
Geoscience Australia

# Current Exploration Opportunities in the Offshore Canning Basin, Offshore Australia.

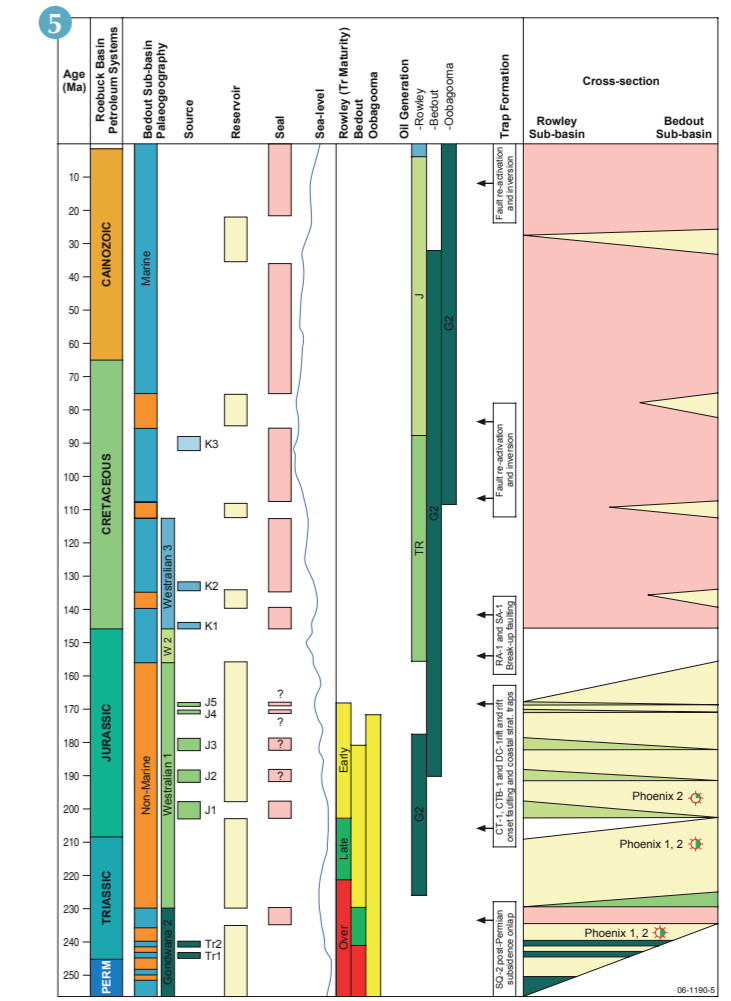
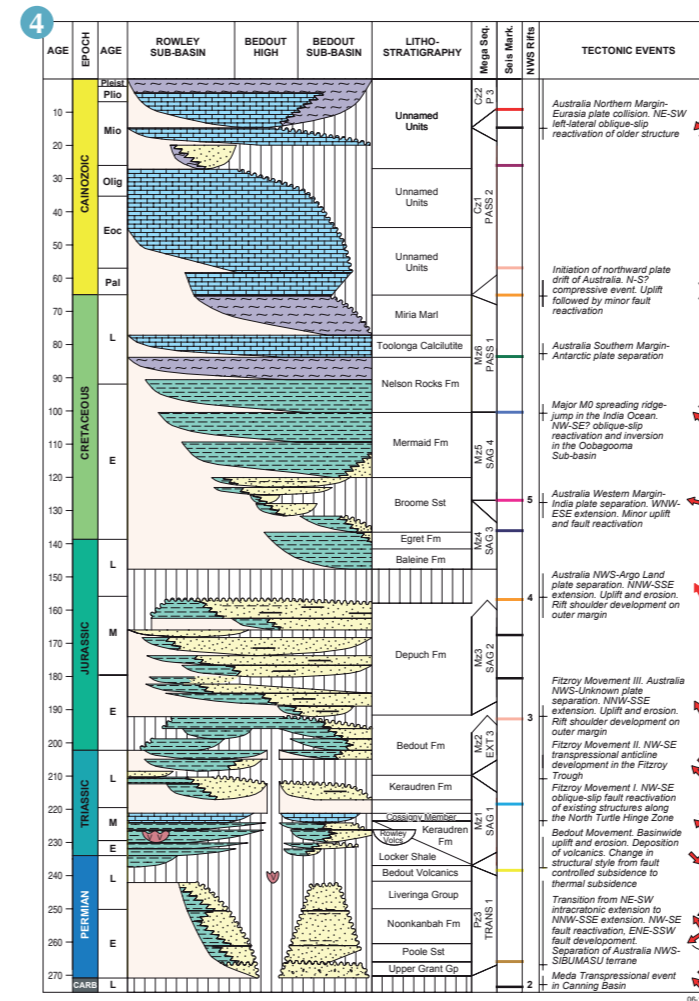
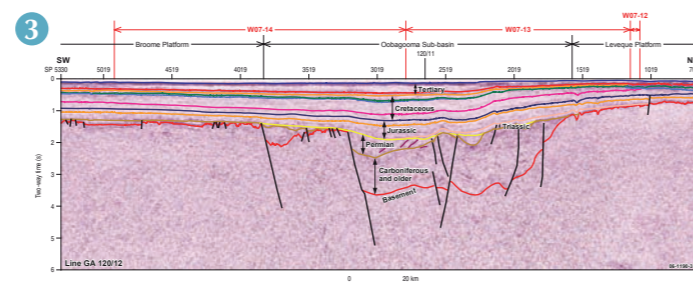
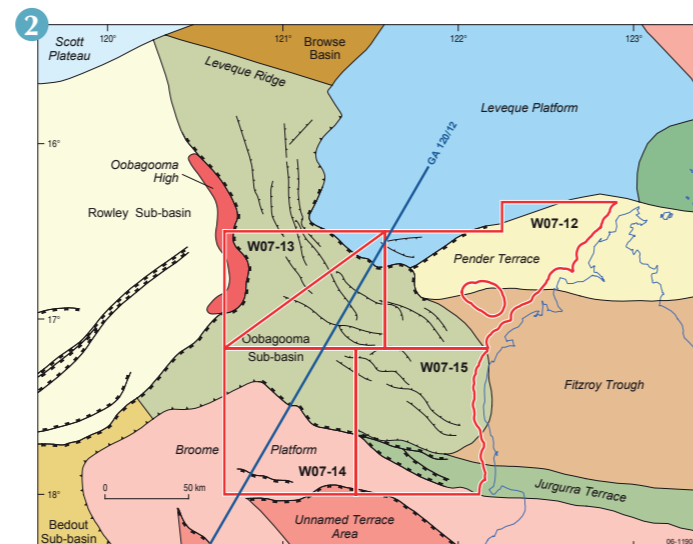
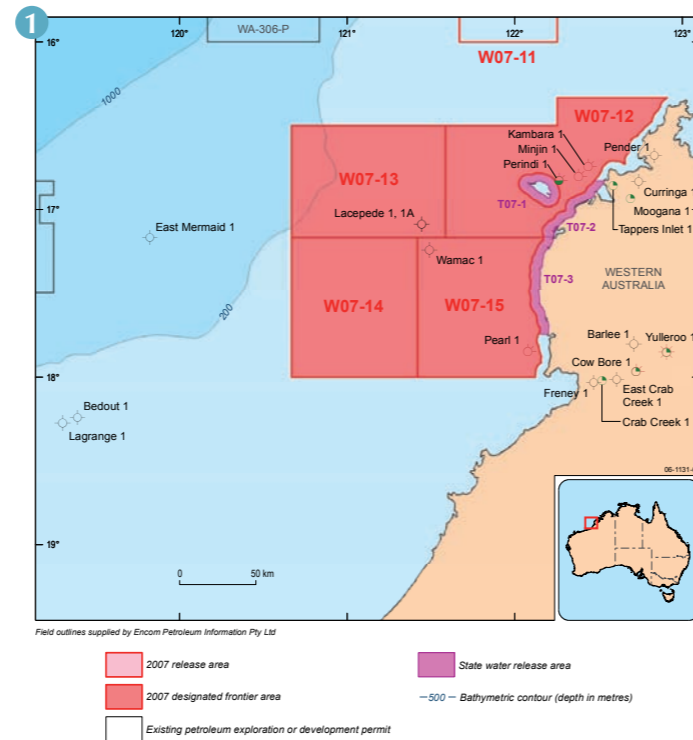
## Open for bids until 17 April 2008

### Areas W07-12, W07-13, W07-14 and W07-15

- Under-explored, shallow water frontier areas <500 m water depth.
- Offshore extension of proven onshore Palaeozoic oil and gas province, and potential Mesozoic petroleum systems.
- Evidence of local oil and gas generation and migration.
- Carboniferous, Permian, Triassic and Jurassic reservoir sands; potential Devonian clastic and carbonate reservoirs.
- Potential Middle Triassic and latest Triassic-earliest Jurassic regional seals.
- Potential stratigraphic pinchout traps against the Oobagooma High and the basin margin.
- Special Notices apply, refer to Guidance Notes.

### Geoscience Australia Reports/Products W07-12 to W07-15, Canning Basin

- Canning Basin Project, Stage 1, Lennard Shelf: Wells Folio. AGSO Record 1992/96
- Canning Basin Project, Stage 1, Lennard Shelf: Seismic Folio. AGSO Record 1993/1
- Canning Basin Project, Stage 2. Geochemical and Porosity/Permeability Data. AGSO Record 1994/59
- Canning Basin Project, Stage 2. Geohistory Modelling - AGSO Record 1994/67
- Central North West Shelf (Rowley) seepage survey. AusGeo News 85, March 2007. [www.ga.gov.au/ausgeonews/download.jsp](http://www.ga.gov.au/ausgeonews/download.jsp)
- Central North West Shelf Seepage: identifying potential natural hydrocarbon seeps and petroleum prospectivity, Offshore Canning and Roebuck Basins. (28 May - 24 June 2006). SS06/06 Marine National Facility. [www.marine.csiro.au/nationalfacility/voyagedocs/2006/index.htm](http://www.marine.csiro.au/nationalfacility/voyagedocs/2006/index.htm)
- Line Drawings of Interpreted Regional Seismic Profiles. Offshore Northern and Northwestern Australia. Geocat No's 35234, 35237, 35239 – 35245, 35247 – 35249, 35252.



1. Location map of areas W07-12 to W07-15, Offshore Canning Basin.
2. Structural framework of the Offshore Canning Basin (Smith et al, 1999)
3. Seismic line GA 120/12 across the Oobagooma Sub-basin.

4. Stratigraphy of the Offshore Canning Basin (after Smith, 1999 and Smith et al, 1999).
5. Petroleum systems of the Offshore Canning and Roebuck basins (after Smith, 1999 and Smith et al, 1999).

### CANNING BASIN PETROLEUM PLAY ELEMENTS

Source	Locker Shale equivalent and Keraudren Formation (Early Triassic), Bedout and Depuch formations (Early to Middle Jurassic), Baleine & Egret Formations (Late Jurassic – earliest Cretaceous), Mermaid and Nelson Rocks formations (Early Cretaceous).
Reservoir	Keraudren Formation (Middle to Late Triassic), Depuch Formation (Early to Middle Jurassic), Cretaceous & Cenozoic non-marine sediments.
Seal	Bedout Formation (Late Triassic to Early Jurassic) regional seal, Cossigny Member of the Keraudren Formation (Middle Triassic), Cretaceous & Cenozoic marine sediments.
Traps	Stratigraphic pinchout traps against the Oobagooma High and the basin margin.
Infrastructure and Markets	All four areas Designated Frontier, tax concession applies.