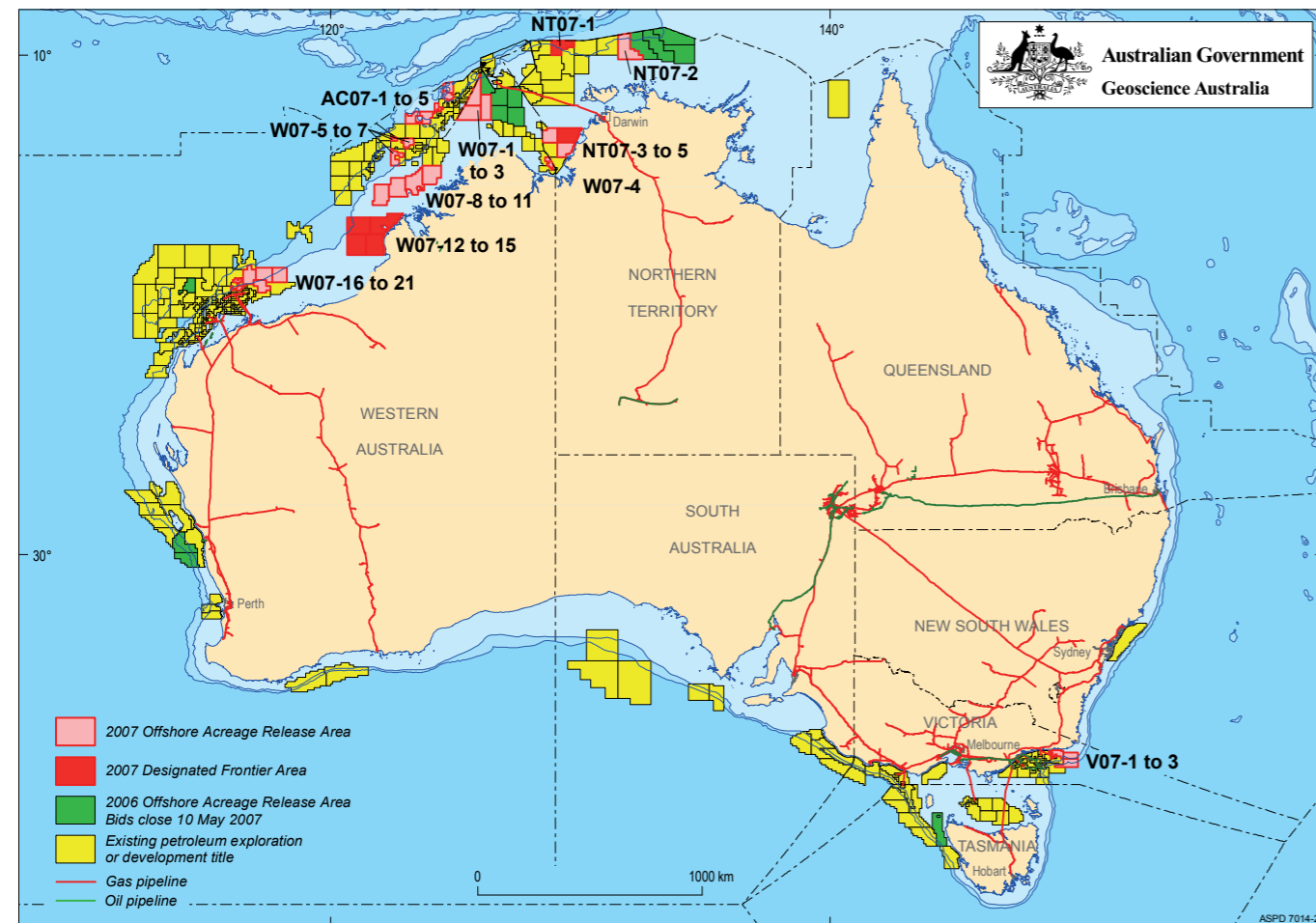


2007 Release of Offshore Petroleum Exploration Areas

The 2007 Offshore Petroleum Exploration Acreage release comprises 34 areas, located across six basins. The release areas range from frontier to mature status and offer opportunities for exploration companies of all sizes.

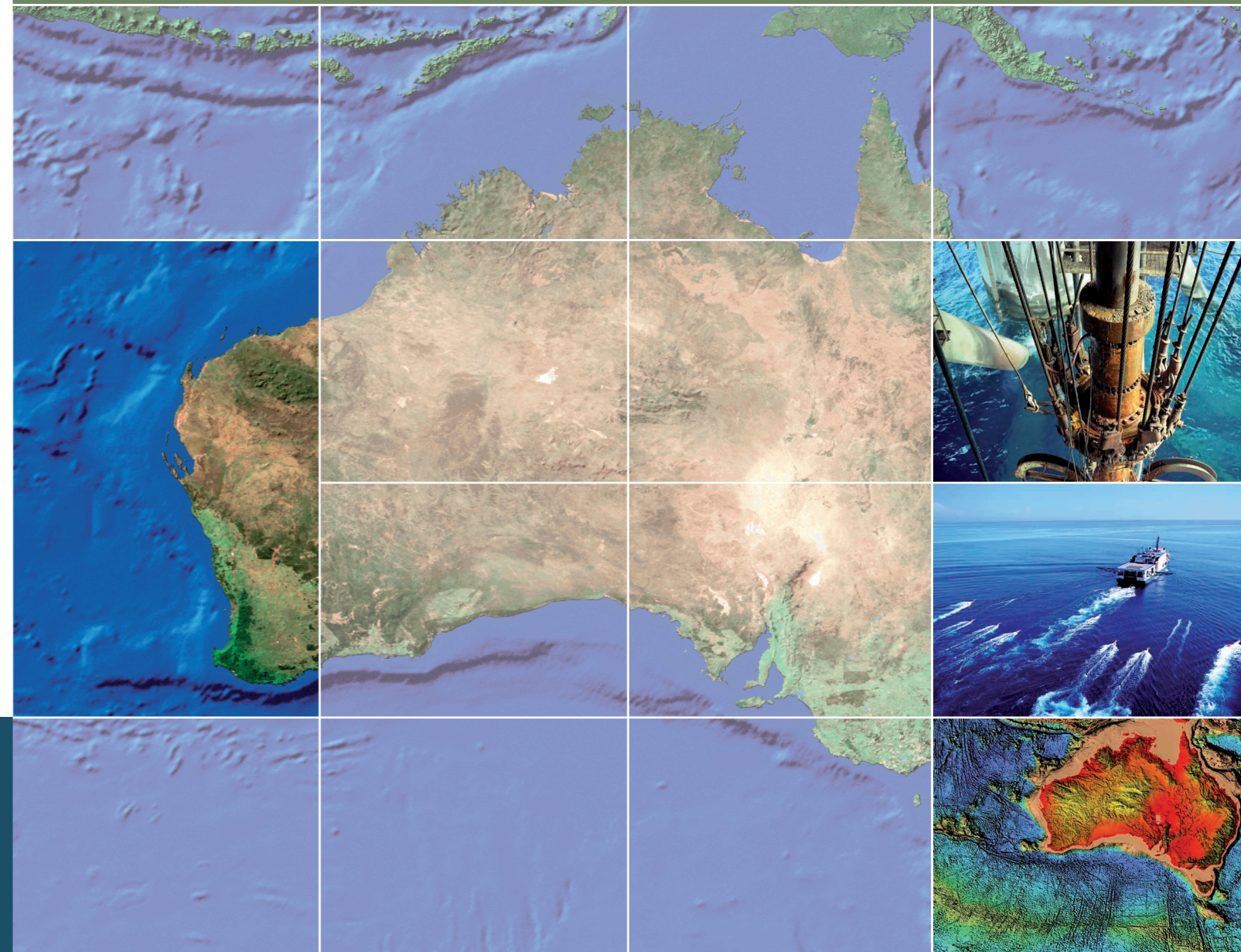
Comprehensive acreage release information packs can be obtained (free of charge) by emailing contact details to: petroleum.exploration@industry.gov.au



EXPLORE AUSTRALIA

EXMOUTH PLATEAU, CARNARVON BASIN, WESTERN AUSTRALIA

Areas W07-16 and W07-17



FOR MORE INFORMATION CONTACT:

Mr Bob Pegler
General Manager
Offshore Resources Branch
Resources Division
Department of Industry, Tourism and Resources
GPO Box 9839, CANBERRA ACT 2601
AUSTRALIA
Telephone: +61 2 6213 7928
Facsimile: +61 2 6213 7955
E-mail: petroleum.exploration@industry.gov.au
Internet: www.industry.gov.au/petexp

FOR GEOSCIENTIFIC ENQUIRIES CONTACT:

Dr Clinton Foster
Chief of Division
Petroleum & Marine Division
Geoscience Australia
GPO Box 378, CANBERRA ACT 2601
AUSTRALIA
Telephone: +61 2 6249 9447
Facsimile: +61 2 6249 9933
E-mail: Clinton.Foster@ga.gov.au
Internet: www.ga.gov.au

BIDS CLOSE 18 OCTOBER 2007



Australian Government
Geoscience Australia

Current Exploration Opportunities in the Exmouth Plateau, Carnarvon Basin, Offshore Australia

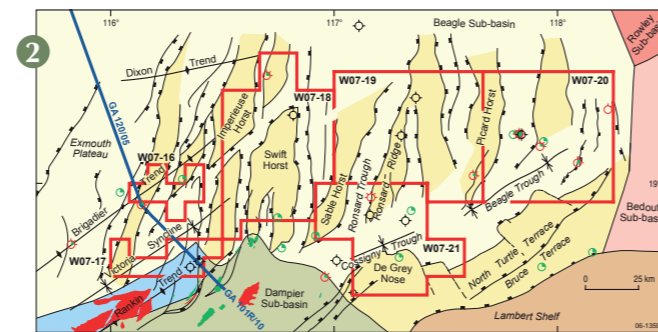
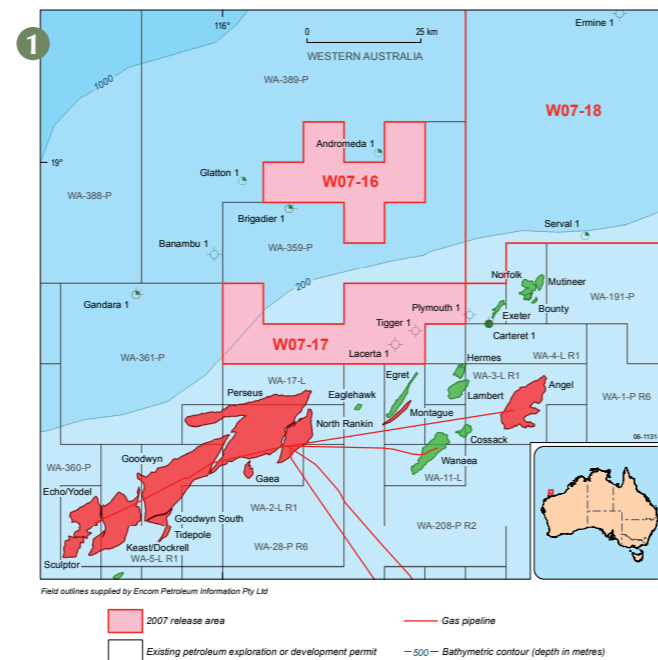
Open for bids until 18 October 2007

Areas W07-16 and W07-17

- Australia's premier hydrocarbon province.
- Frontier blocks in a range of water depths (less than 200 m to approx 800 m).
- Near to giant producing fields and near existing infrastructure and an expanding gas market.
- Traditional Triassic Mungaroo fault block plays, as at Goodwyn.
- Special Notices apply, refer to Guidance Notes.

Geoscience Australia Reports/Products W07-16 & W07-17, Exmouth Plateau

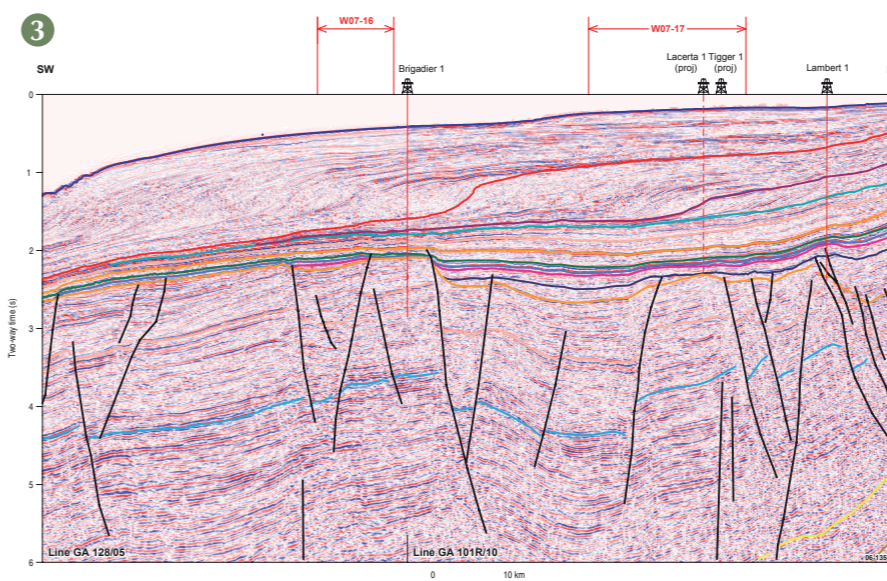
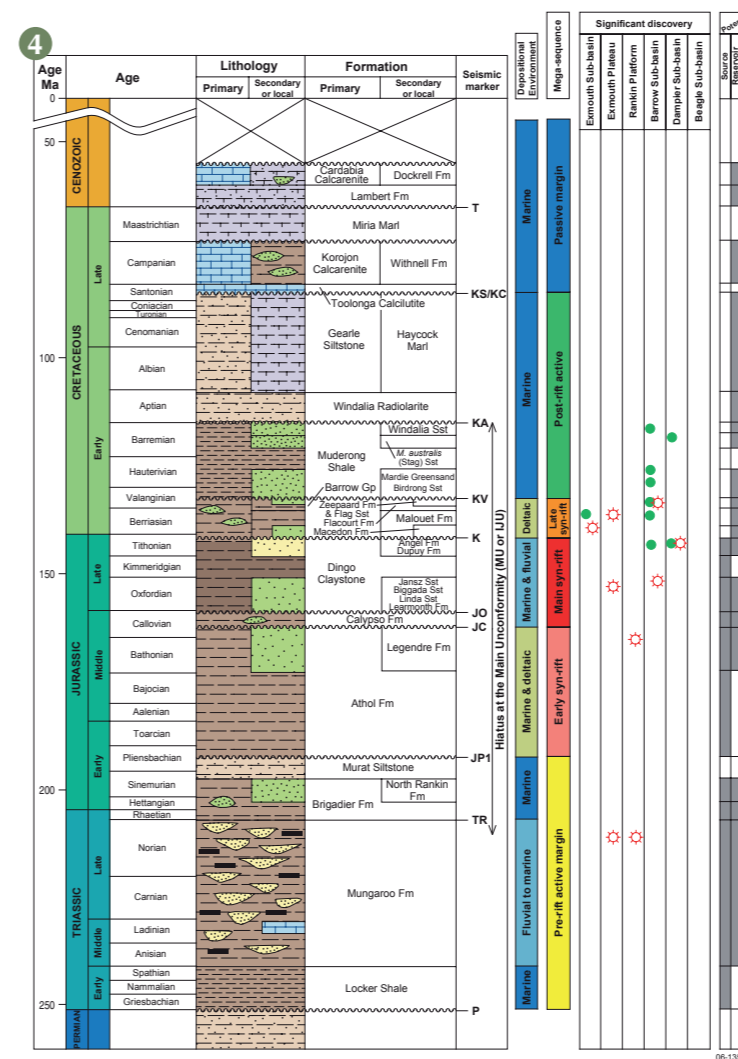
- Interpretations of Geoscience Australia's regional seismic data, Survey 101, 110 and 128 (2001) – digital horizon and fault data in ASCII format. GA Catalog No. 35240, 35242 and 35247.
- Line drawings of Geoscience Australia's regional seismic profiles, offshore northern and northwestern Australia. GA Catalog No. 36353.
- Northern Carnarvon Basin high-resolution seismic survey CTT-136, and Interpretation Report. GA Record 1996/36.
- Source rock time-slice maps (TOC, HI, VR), offshore Northwest Australia - 1:3,000,000 scale. GA Catalog No. 61179.
- Characterisation of Natural Gases from West Australian Basins: Carnarvon Basin Module. GA and Geotechnical Services Non-exclusive Study, 2000.
- Oils of Western Australia: Regional Petroleum Geochemistry and correlation of crude oils. GA and GeoMark Research, 1996.
- Oils of Western Australia II: Regional Petroleum Geochemistry and correlation of crude oils and condensates from Western Australia and Papua New Guinea. GA and GeoMark Research, 2005.
- Northwestern and Northern Australian margins stratigraphic chart showing GA's interpreted regional seismic horizons, 2001. GA Catalog No. 36454.
- Basin Biozonation and Stratigraphy charts for the Southern and Northern Carnarvon Basins. Charts 4 and 11, 1998.



Contact Geoscience Australia's Sales Centre for more information or to order these reports or products, phone 61 (0)2 6249 9966, e-mail sales@ga.gov.au

Relevant Industry Data

- Australian North West Shelf Digital Atlas, www.nwsda.com



NORTHERN EXMOUTH PLATEAU PETROLEUM PLAY ELEMENTS

Source	Locker Shale Formation equivalents (Early Triassic) and Mungaroo Formation equivalents (Middle to Late Triassic).
Reservoir	Brigadier Formation (Late Triassic to Early Jurassic), the Mungaroo Formation (Late Triassic) and Barrow Group (Early Cretaceous).
Seal	Regional seals provided by Locker Shale (Early Triassic), Cossigny Member of the Mungaroo Formation (Middle Triassic) and Forestier Claystone and Muderong Shale (Early Cretaceous). Mungaroo Formation (Triassic) provides an intraformational seal.
Traps	Tilted fault blocks, horsts, fault roll-over structures, drape anticlines and stratigraphic pinch-outs.
Infrastructure and Markets	Producing oil accumulations at Lambert, Hermes, Mutineer/Norfolk and Exeter lie no more than 10km to the east of Area W07-17. North Rankin/Perseus gas accumulation extends to within 10km of the southern edge of Area W07-17.

1. Location map of areas W07-16 and W07-17, Exmouth Plateau Carnarvon Basin.
2. Structural elements of the Northern Exmouth Plateau also showing the location of Figure 3.
3. Composite regional seismic line 128/05 and 101R/10, Northern Exmouth Plateau.
4. Stratigraphy of the Northern Exmouth Plateau.