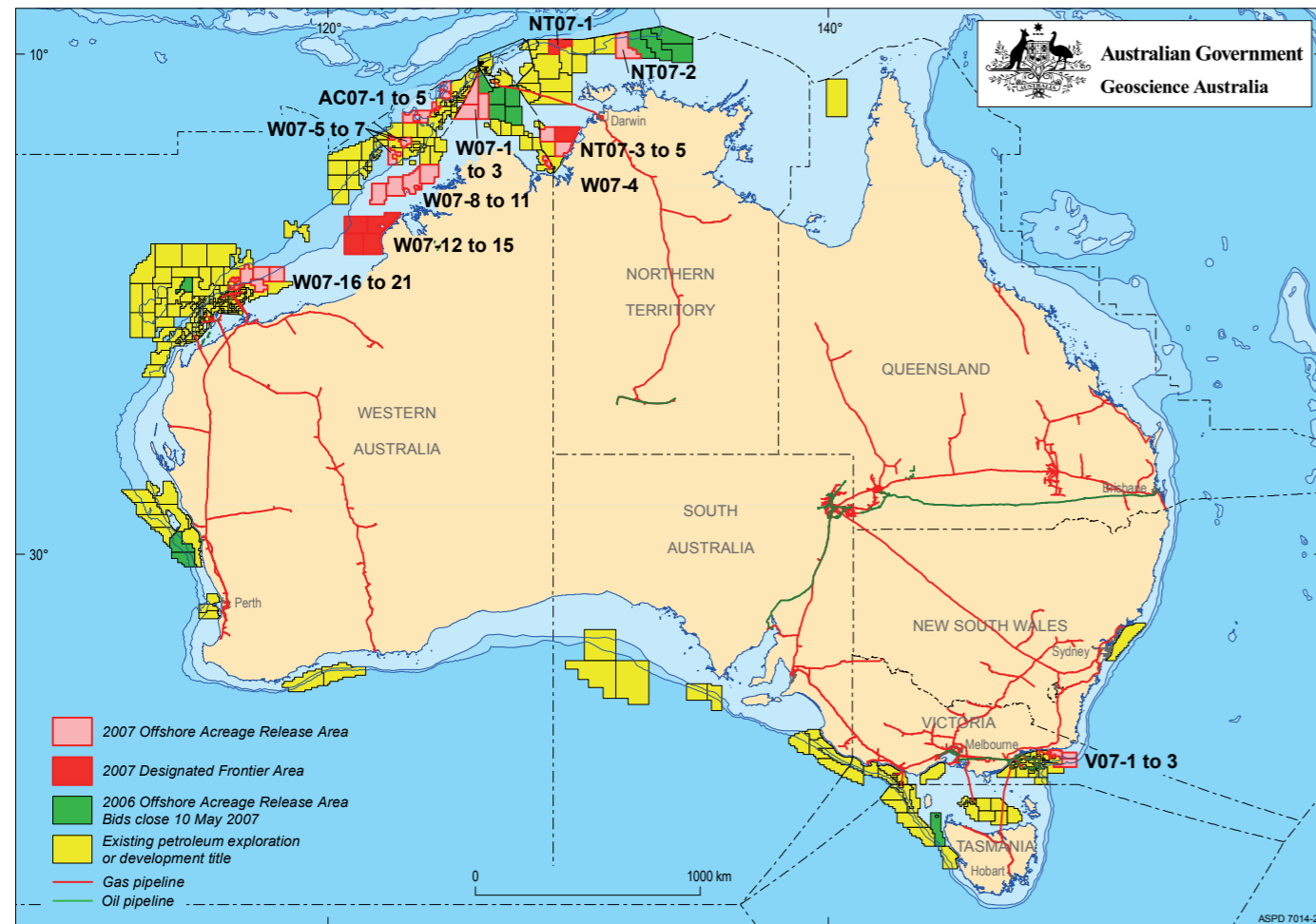


## 2007 Release of Offshore Petroleum Exploration Areas

The 2007 Offshore Petroleum Exploration Acreage release comprises 34 areas, located across six basins. The release areas range from frontier to mature status and offer opportunities for exploration companies of all sizes.

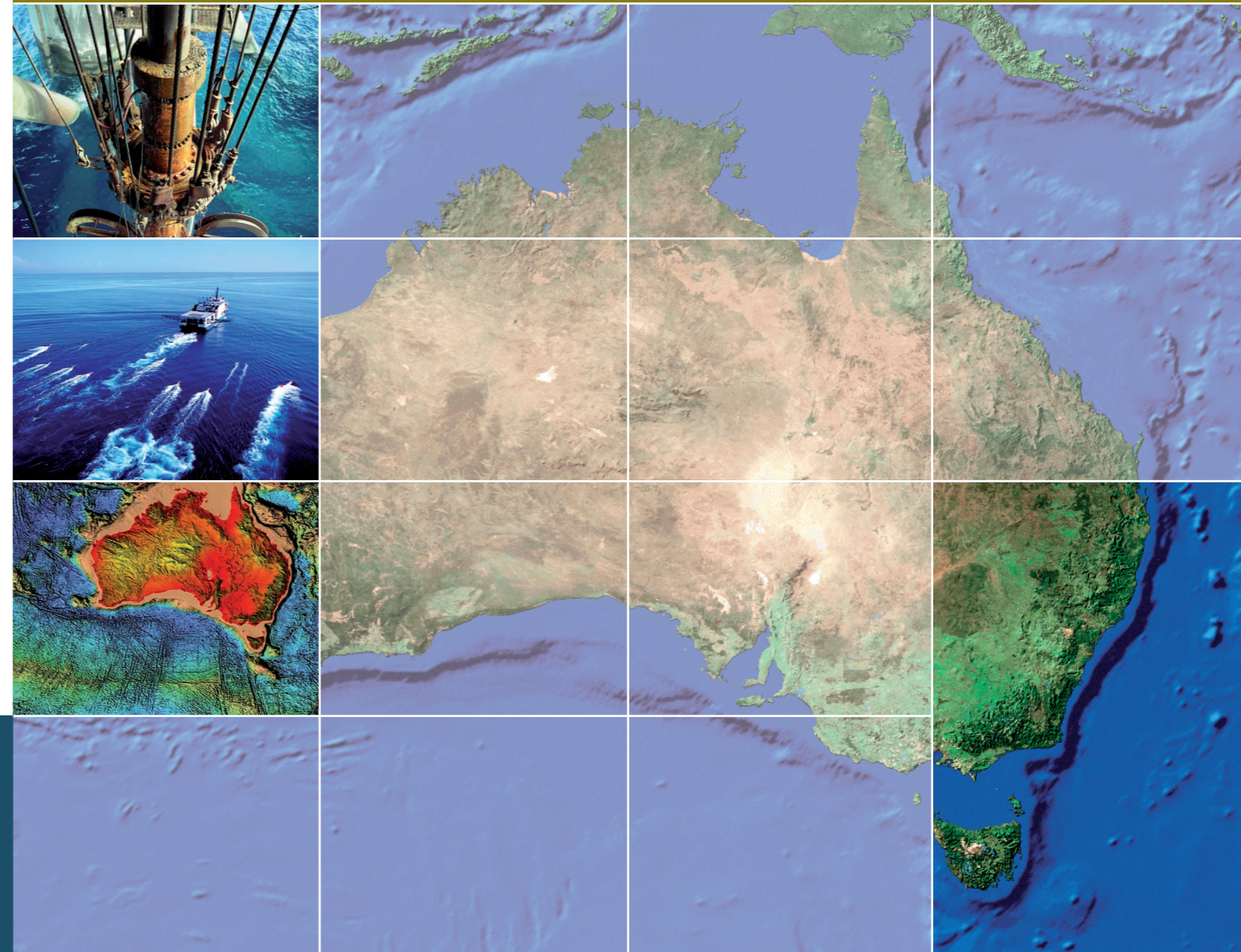
Comprehensive acreage release information packs can be obtained (free of charge) by emailing contact details to: [petroleum.exploration@industry.gov.au](mailto:petroleum.exploration@industry.gov.au)



# EXPLORE AUSTRALIA

## GIPPSLAND BASIN, VICTORIA

Areas V07-1, V07-2 and V07-3



### FOR MORE INFORMATION CONTACT:

Mr Bob Pegler  
General Manager  
Offshore Resources Branch  
Resources Division  
Department of Industry, Tourism and Resources  
GPO Box 9839, CANBERRA ACT 2601  
AUSTRALIA  
Telephone: +61 2 6213 7928  
Facsimile: +61 2 6213 7955  
E-mail: [petroleum.exploration@industry.gov.au](mailto:petroleum.exploration@industry.gov.au)  
Internet: [www.industry.gov.au/petexp](http://www.industry.gov.au/petexp)

### FOR GEOSCIENTIFIC ENQUIRIES CONTACT:

Dr Clinton Foster  
Chief of Division  
Petroleum & Marine Division  
Geoscience Australia  
GPO Box 378, CANBERRA ACT 2601  
AUSTRALIA  
Telephone: +61 2 6249 9447  
Facsimile: +61 2 6249 9933  
E-mail: [Clinton.Foster@ga.gov.au](mailto:Clinton.Foster@ga.gov.au)  
Internet: [www.ga.gov.au](http://www.ga.gov.au)

BIDS CLOSE 18 OCTOBER 2007 FOR V07-1

BIDS CLOSE 17 APRIL 2008 FOR V07-2 & V07-3



Australian Government  
Geoscience Australia

# Current Exploration Opportunities in the Gippsland Basin, Offshore Australia

## Open for bids until 18 October 2007 for V07-1 and 17 April 2008 for V07-2 & V07-3

### Areas V07-1, V07-2 and V07-3

- Located in a world-class petroleum province with remaining reserves estimated at 400 MMstb oil and 6 TCF gas.
- Near to giant producing fields and near existing infrastructure and an expanding gas market.
- Untapped potential in major pinch-out play.
- Special Notices apply, refer to Guidance Note

### Geoscience Australia Reports/Products V07-1 to V07-3, Gippsland Basin

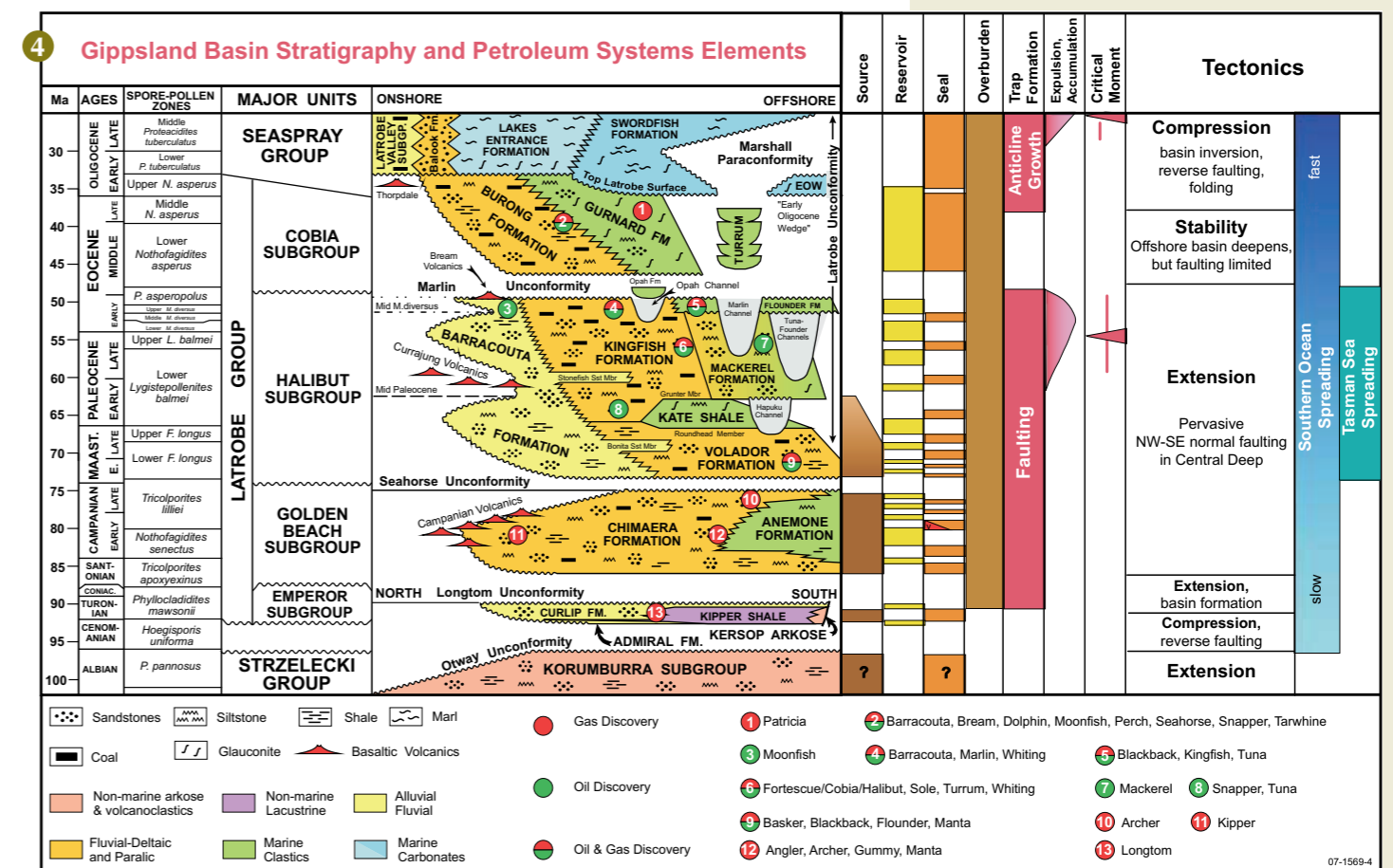
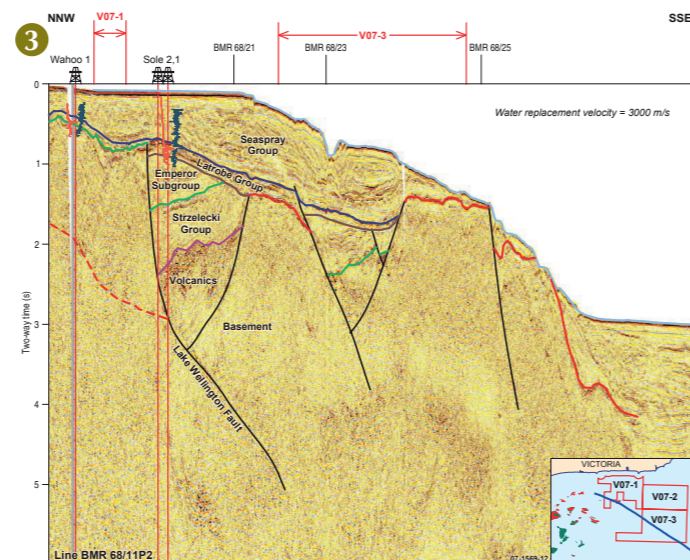
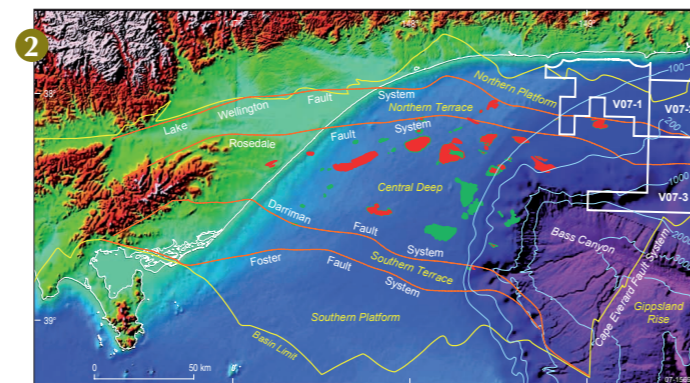
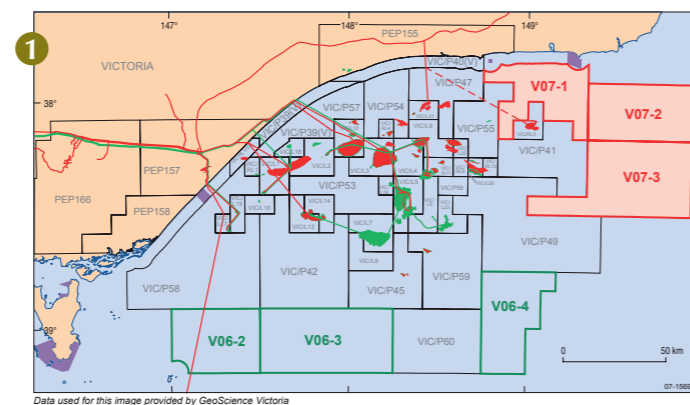
- AGSO regional deep-seismic surveys 82 & 90, reprocessed by GA and NOPEC, November 2001.
- Gravity, Magnetic and Bathymetry grids from levelled data for Southern and Southeast Australia.
- Oils of Eastern Australia: Regional Petroleum Geochemistry and correlation of crude oils (AGSO and GeoMark Research).
- Regional Deep structure of the Gippsland Basin (AGSO Record 1993/13).

Contact Geoscience Australia's Sales Centre for more information or to order these reports or products, phone 61 (0)2 6249 9966, e-mail sales@ga.gov.au

### GeoScience Victoria Reports/Products V07-1 to V07-3, Gippsland Basin

- VIMP Report 92: Hydrocarbon Prospectivity of Areas V07-1, V07-2 and V07-3, northeastern offshore Gippsland Basin, Victoria, Australia
- GeoVic Online Mapping Tool.

Contact GeoScience Victoria's Customer Service Centre for more information or to order this product, phone 136 186 or email customer.service@dpi.vic.gov.au



GIPPSLAND BASIN PETROLEUM PLAY ELEMENTS	
Source	Latrobe Group: Halibut Subgroup (Volador Formation, Upper Cretaceous) and possibly Strzelecki Group (Lower Cretaceous).
Reservoir	Top Latrobe (coarse-grained shallow marine sandstones, Mackerel Formation, Early Eocene) and intra-Latrobe fluvio-deltaic and marginal marine sandstones (Kingfish Formation, Paleocene).
Seal	Regional seal: marls of Lakes Entrance Formation (Lower Oligocene); Intra-formational seals: lower coastal plain mudstones and marine shales of Halibut Subgroup (Maastrichtian – Early Eocene); Campanian Volcanics (localised)
Traps	Faulted anticlines and lowside fault-closures.
Infrastructure and Markets	Close to existing infrastructure and expanding energy markets.

1. Gippsland Basin permit map, showing location of the 2007 release areas.
2. Digital terrain image of the Gippsland Basin, showing the main tectonic elements and the 2007 release areas.
3. NW-SE seismic section through areas V07-1 and V07-3.
4. Stratigraphic chart for the Gippsland Basin, showing the tectonic history and petroleum systems elements.