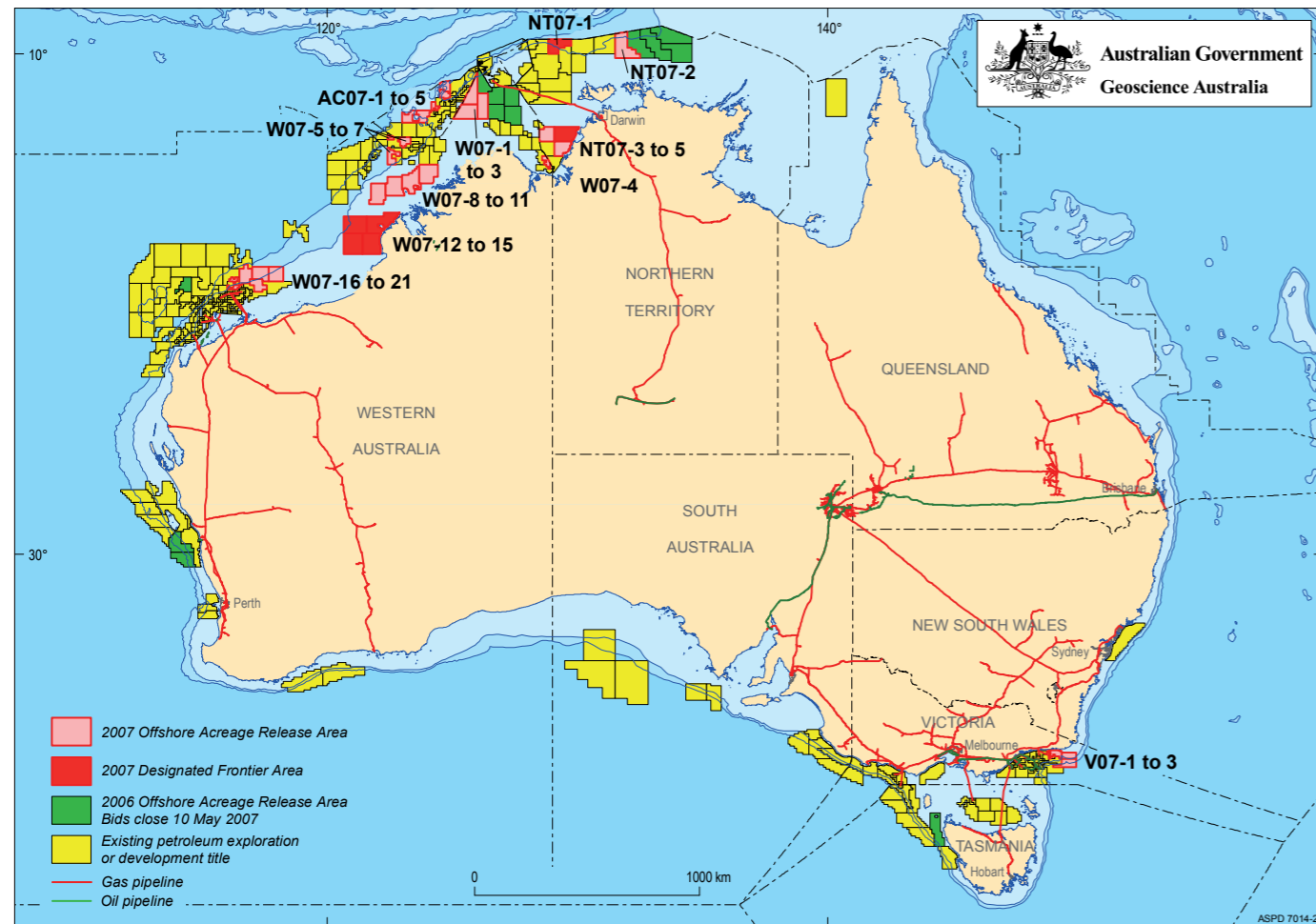


2007 Release of Offshore Petroleum Exploration Areas

The 2007 Offshore Petroleum Exploration Acreage release comprises 34 areas, located across six basins. The release areas range from frontier to mature status and offer opportunities for exploration companies of all sizes.

Comprehensive acreage release information packs can be obtained (free of charge) by emailing contact details to: petroleum.exploration@industry.gov.au

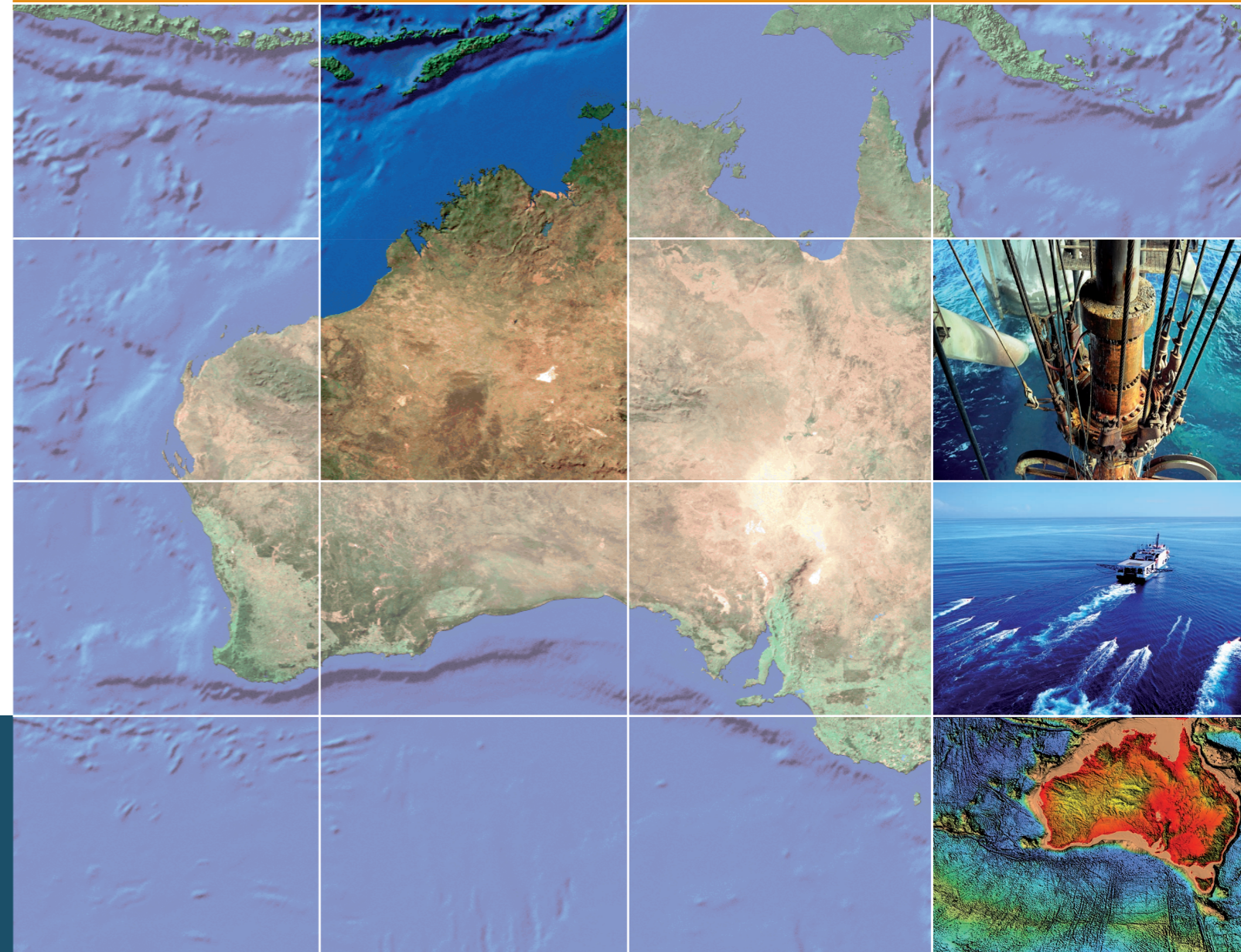


EXPLORE AUSTRALIA

TROUBADOUR TERRACE, BONAPARTE BASIN NORTHERN TERRITORY

Area NT07-1

Designated Frontier Tax Concession Applies



FOR MORE INFORMATION CONTACT:

Mr Bob Pegler
General Manager
Offshore Resources Branch
Resources Division
Department of Industry, Tourism and Resources
GPO Box 9839, CANBERRA ACT 2601
AUSTRALIA
Telephone: +61 2 6213 7928
Facsimile: +61 2 6213 7955
E-mail: petroleum.exploration@industry.gov.au
Internet: www.industry.gov.au/petexp

FOR GEOSCIENTIFIC ENQUIRIES CONTACT:

Dr Clinton Foster
Chief of Division
Petroleum & Marine Division
Geoscience Australia
GPO Box 378, CANBERRA ACT 2601
AUSTRALIA
Telephone: +61 2 6249 9447
Facsimile: +61 2 6249 9933
E-mail: Clinton.Foster@ga.gov.au
Internet: www.ga.gov.au

BIDS CLOSE 18 OCTOBER 2007



Australian Government
Geoscience Australia

Current Exploration Opportunities in the Troubadour Terrace, Bonaparte Basin, Offshore Australia

Open for bids until 18 October 2007

Area NT07-1, Troubadour Terrace

- Surrounded by giant gas accumulations; Greater Sunrise, Evans Shoal and Abadi in Indonesian waters, and in proximity to the recent discoveries at Caldita (33 MMscf/d) and Barossa (30 MMscf/d).
- Close to Darwin operations base and the Wickham Point LNG plant supplied by the Bayu-Undan gas pipeline.
- Water depths less than 500 m.
- Good quality Middle Jurassic reservoir (Plover Formation).
- Good quality regional seal (Cretaceous Bathurst Island Group).
- Special Notices apply, refer to Guidance Notes.

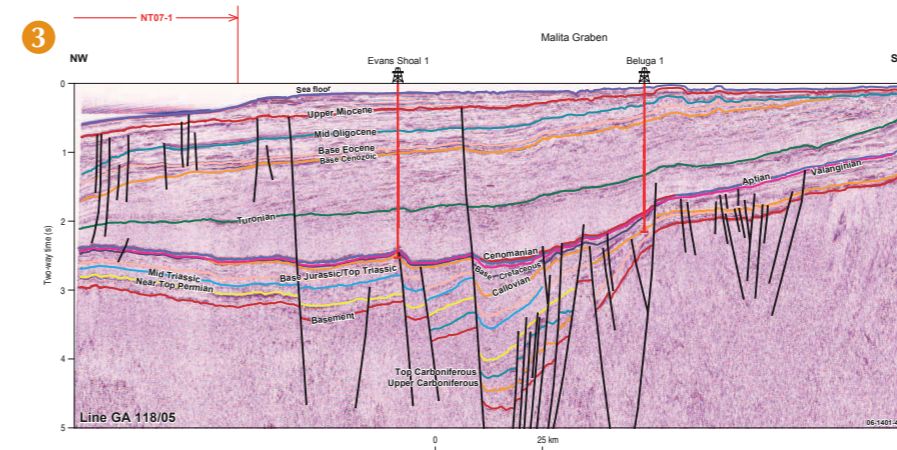
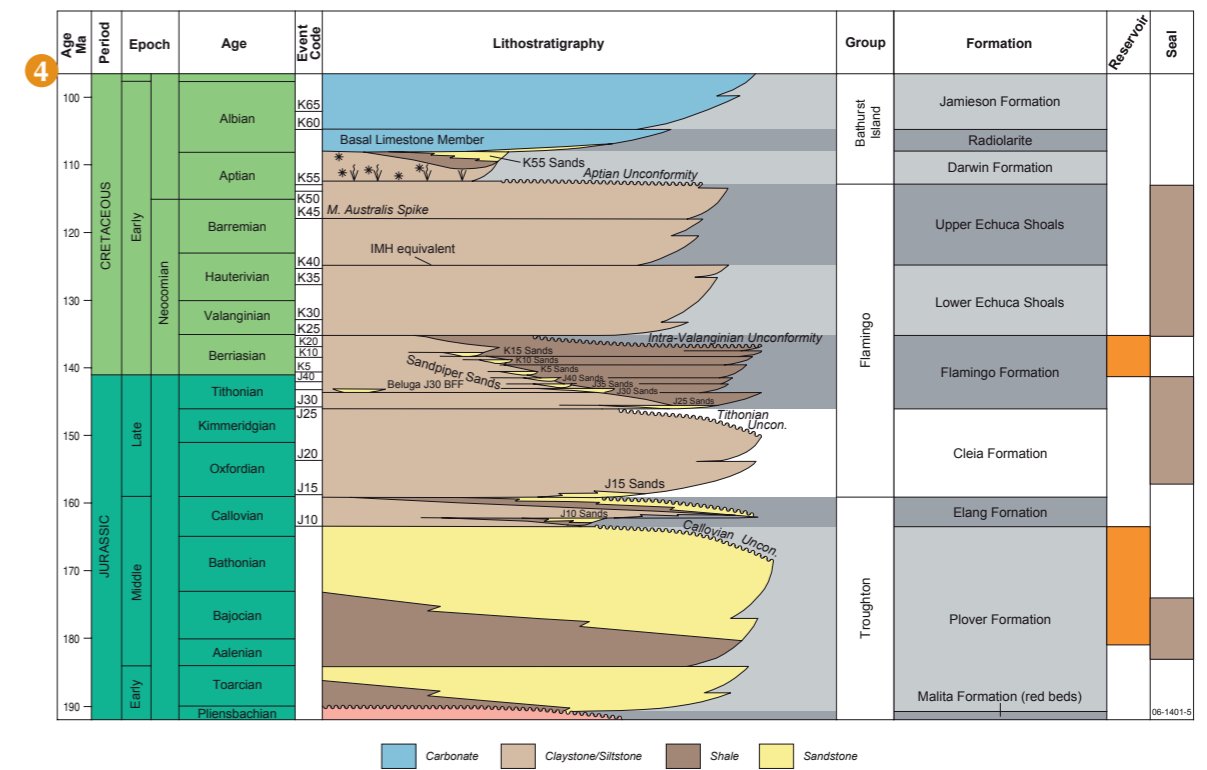
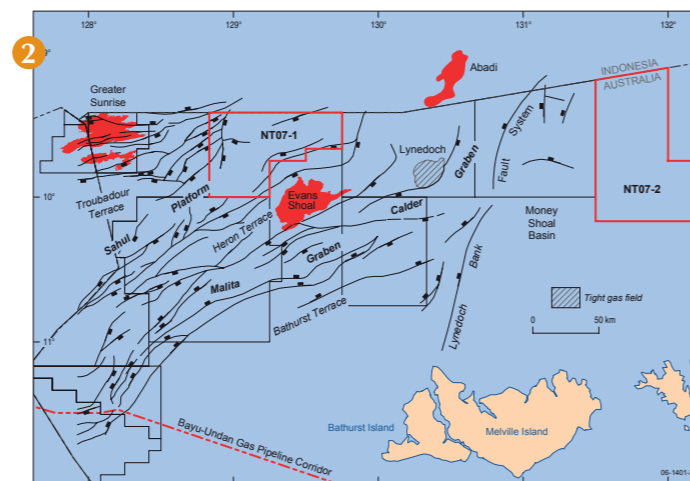
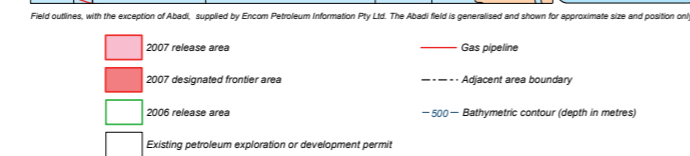
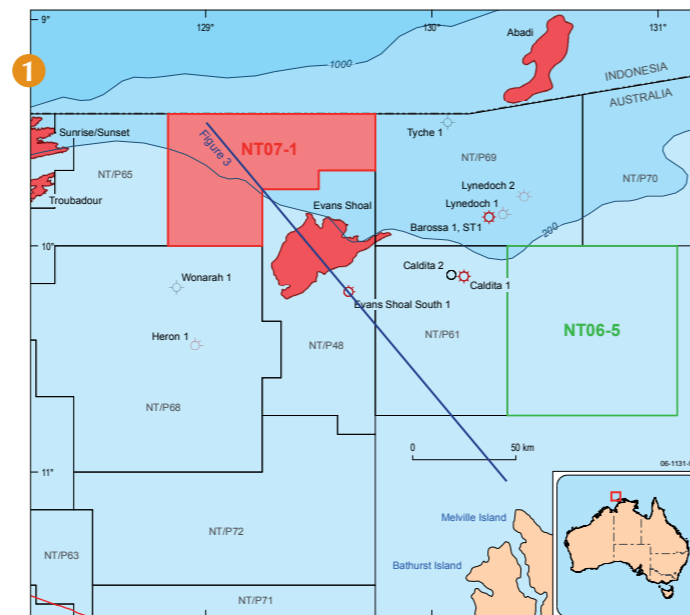
Geoscience Australia Reports/Products

New Reports/Products

- Source rock time-slice maps (TOC, HI, VR), offshore Northwest Australia - 1:3,000,000 scale (GA Catalog No. 61179).
- Oils of Western Australia II: Regional Petroleum Geochemistry and correlation of crude oils and condensates from Western Australia and Papua New Guinea (GA and GeoMark Research, 2005).

Other Reports/Products

- Interpretations of Geoscience Australia's regional seismic data, Survey 98, 100, 116, 118, 119 and 130 (2001) – digital horizon and fault data in ASCII format. GA Catalog No's. 35237, 35239, 35249, 35243, 35244, 35248.
- Line drawings of Geoscience Australia's regional seismic profiles, offshore northern and northwestern Australia. GA Catalog No. 36353.
- Characterisation of Natural Gases from West Australian Basins: Bonaparte Basin Module. GA and Geotechnical Services Non-exclusive Study, 2000.
- Oils of Western Australia: Regional Petroleum Geochemistry and correlation of crude oils. GA and GeoMark Research, 1996.
- Northwestern and Northern Australian margins stratigraphic chart showing GA's interpreted regional seismic horizons, 2001. GA Catalog No. 36454.
- Basin Biozonation and Stratigraphy charts for the Northern Bonaparte Basin, Chart 15, 1998.



1. Location map of Area NT07-1, Troubadour Terrace, northeastern Bonaparte Basin, also showing the location of Figure 3.
2. Tectonic elements, northeastern Bonaparte Basin.
3. Geoscience Australia seismic line 118/05 through Evans Shoal 1 and Beluga 1.
4. Stratigraphic column, Northern Bonaparte Basin (Lowe-Young et al, 2004).

TOUBADOUR TERRACE PETROLEUM PLAY ELEMENTS	
Source	Elang Formation (Middle Jurassic), Plover Formation (Jurassic), Flamingo Group (Late Jurassic to Early Cretaceous).
Reservoir	Plover Formation (Jurassic), Flamingo Group (Late Jurassic to Early Cretaceous).
Seal	Bathurst Island Group (Cretaceous) regional seal.
Traps	Various styles of structural and stratigraphic traps including titled fault blocks, faulted anticlines and broad, low relief anticlinal drape over titled fault blocks.
Infrastructure and Markets	Designated Frontier Tax Concession applies. Surrounded by giant gas accumulations of Greater Sunrise, Evans Shoal and Abadi in Indonesian waters. Within proximity to recent discoveries at Caldita and Barossa. Close to Darwin operations base and the Wickham Point LNG plant supplied by the Bayu-Undan gas pipeline.

Contact Geoscience Australia's Sales Centre for more information or to order these reports or products, phone 61 (0)2 6249 9966, e-mail sales@ga.gov.au

Industry Products

- Australian North West Shelf Digital Atlas, www.nwsda.com