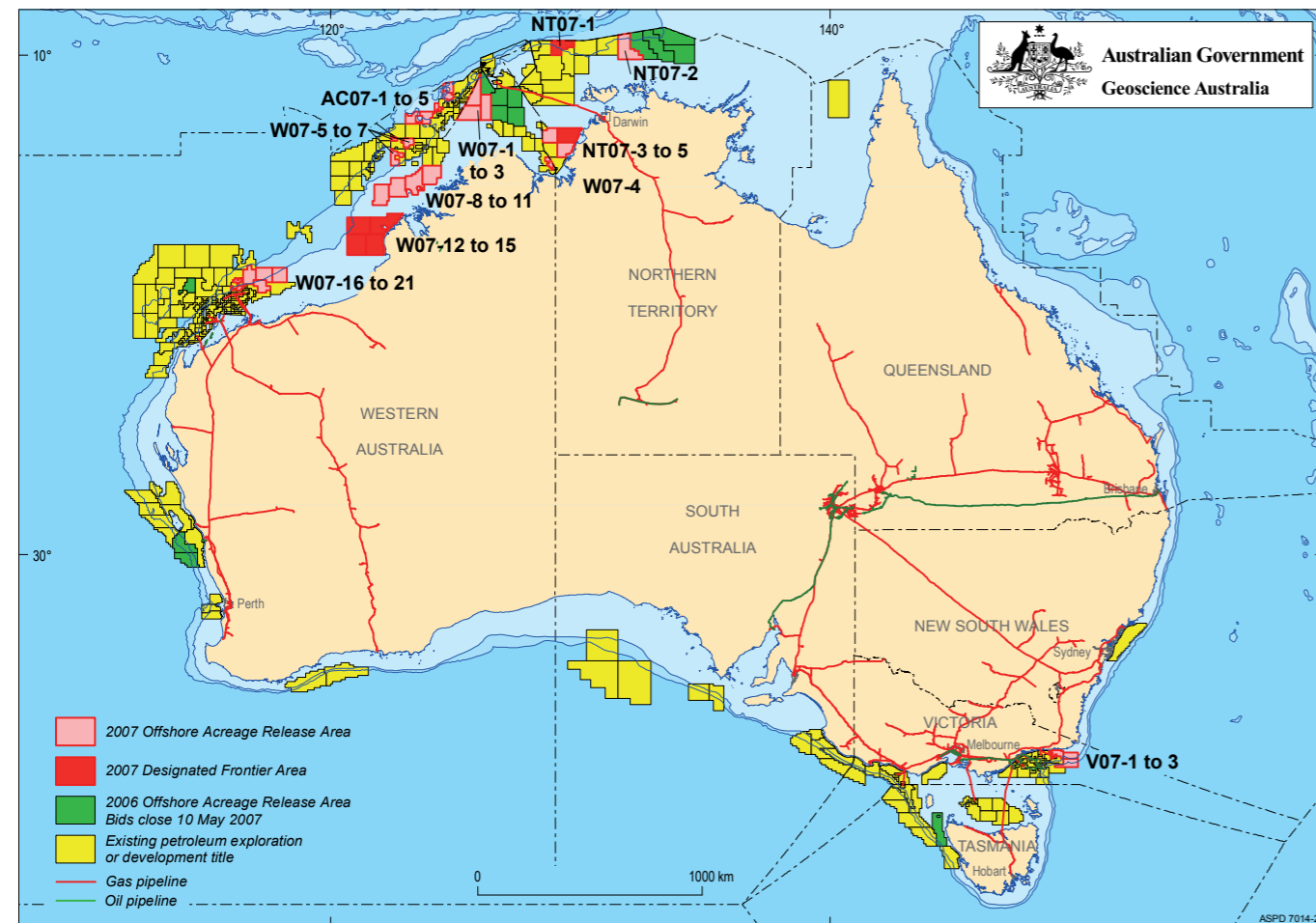


## 2007 Release of Offshore Petroleum Exploration Areas

The 2007 Offshore Petroleum Exploration Acreage release comprises 34 areas, located across six basins. The release areas range from frontier to mature status and offer opportunities for exploration companies of all sizes.

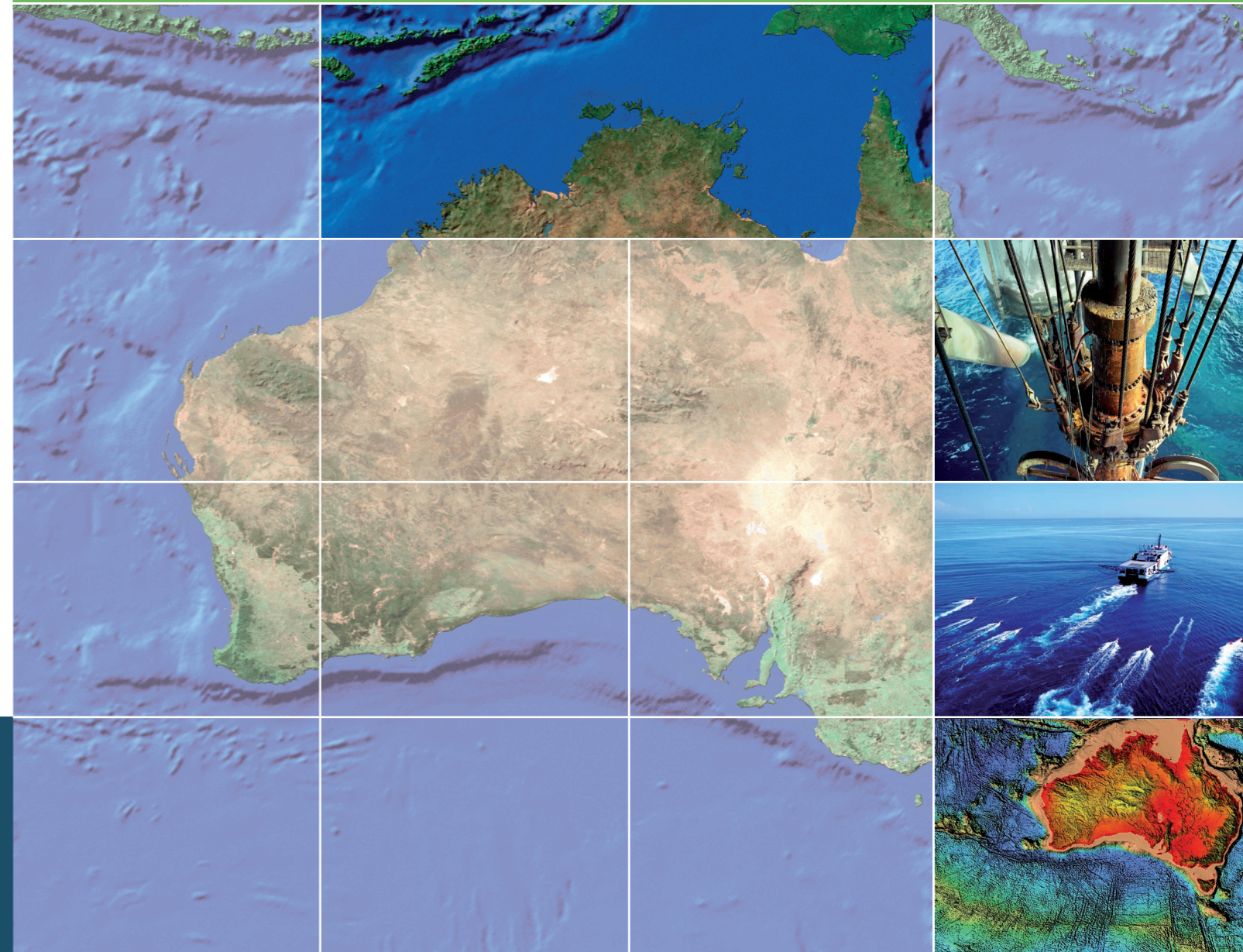
Comprehensive acreage release information packs can be obtained (free of charge) by emailing contact details to: [petroleum.exploration@industry.gov.au](mailto:petroleum.exploration@industry.gov.au)



# EXPLORE AUSTRALIA

## MONEY SHOAL BASIN, NORTHERN TERRITORY

Area NT07-2



### FOR MORE INFORMATION CONTACT:

Mr Bob Pegler  
General Manager  
Offshore Resources Branch  
Resources Division  
Department of Industry, Tourism and Resources  
GPO Box 9839, CANBERRA ACT 2601  
AUSTRALIA  
Telephone: +61 2 6213 7928  
Facsimile: +61 2 6213 7955  
E-mail: [petroleum.exploration@industry.gov.au](mailto:petroleum.exploration@industry.gov.au)  
Internet: [www.industry.gov.au/petexp](http://www.industry.gov.au/petexp)

### FOR GEOSCIENTIFIC ENQUIRIES CONTACT:

Dr Clinton Foster  
Chief of Division  
Petroleum & Marine Division  
Geoscience Australia  
GPO Box 378, CANBERRA ACT 2601  
AUSTRALIA  
Telephone: +61 2 6249 9447  
Facsimile: +61 2 6249 9933  
E-mail: [Clinton.Foster@ga.gov.au](mailto:Clinton.Foster@ga.gov.au)  
Internet: [www.ga.gov.au](http://www.ga.gov.au)

## BIDS CLOSE 18 OCTOBER 2007



Australian Government  
Geoscience Australia

# Current Exploration Opportunities in the Money Shoal Basin, Offshore Australia

## Open for bids until 18 October 2007

### Area NT07-2

- Large under-explored Mesozoic basin.
- Shallow water depths (70–220 m).
- Shallow targets.
- Palaeozoic and Mesozoic potential source rocks.
- Numerous stratigraphic and structural plays.
- Recent studies have reduced charge risk factor.
- Hydrocarbon shows/indications in nearby wells.
- Large gas discoveries in adjacent Bonaparte Basin.
- Special Notices apply, refer to Guidance Notes.

### Geoscience Australia Reports/Products NT07-2, Money Shoal Basin

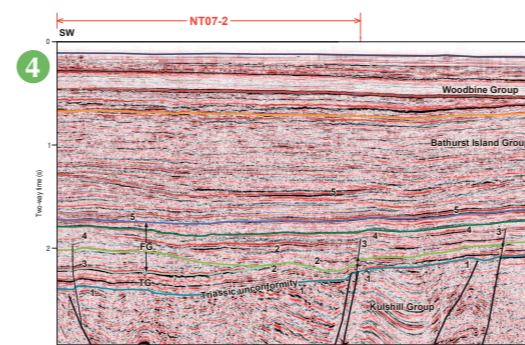
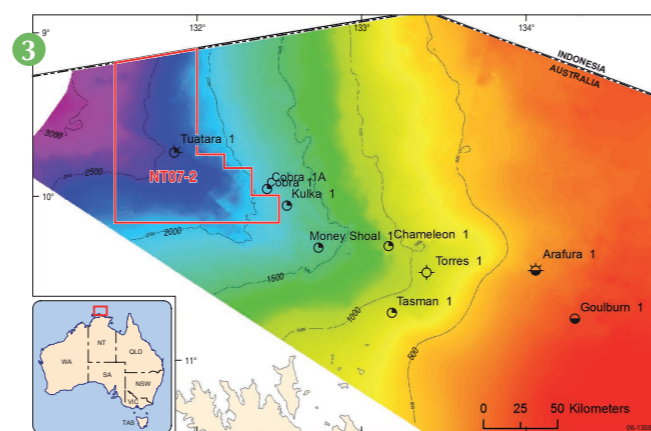
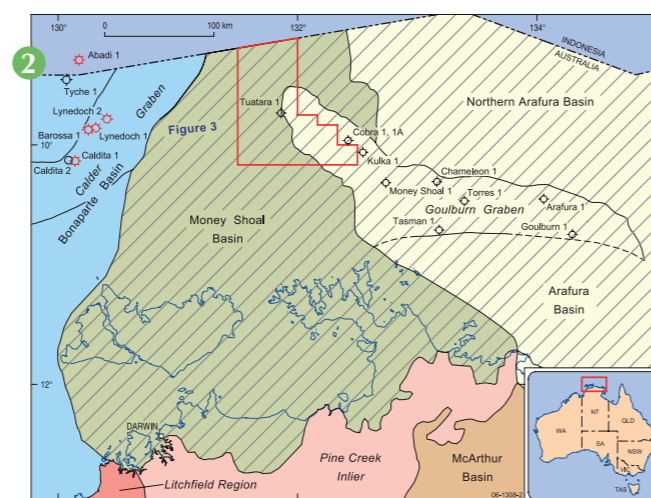
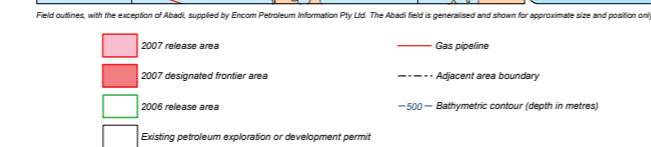
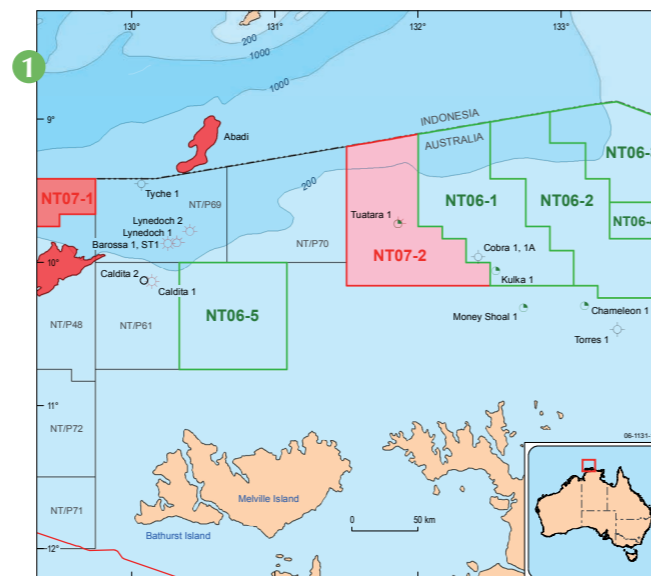
#### New Reports/Products

- An audit of wells in the Arafura Basin. GA Record 2006/02.
- New Datasets for the Arafura Basin. GA Record 2006/06.
- Petroleum Geology of the Arafura and Money Shoal Basins. GA Record 2006/22.
- Shallow gas and benthic habitat mapping, Arafura Sea. RV Southern Surveyor May – June 2005, Post Cruise Report. GA Record 2006/19.

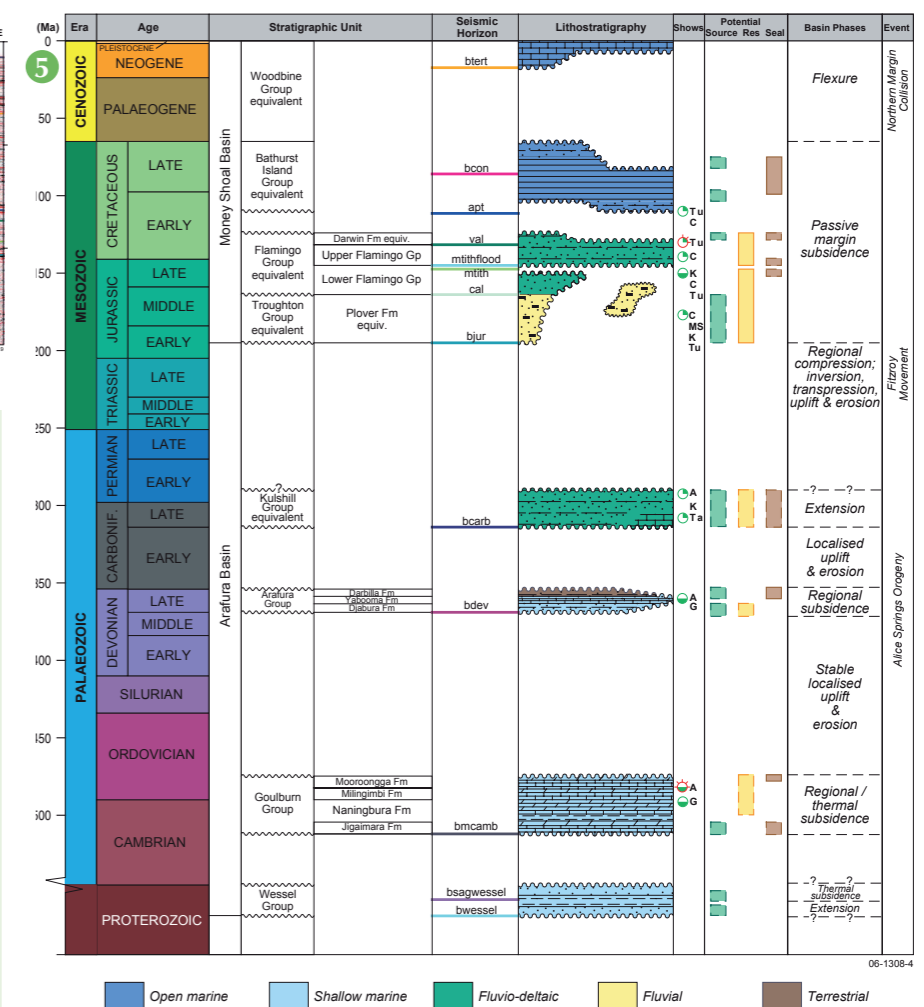
#### Others Reports/Products

- Arafura Petroleum Prospectivity Evaluation Report. AGSO Record 1992/84.
- BP MkII ALF Arafura Sea, Australia: Airborne Laser Fluorosensor Survey, Reprocessing and Interpretation Report. GA Record 2001/22
- Potential Field and Bathymetry Grids. Geocat No's. 38713 (Bathymetry), 38820 (Magnetics) and 47696 (Gravity).
- The geology of Arnhem Land, Northern Territory. BMR Record 1992/55.

Contact Geoscience Australia's Sales Centre for more information or to order these reports or products, phone 61 (0)2 6249 9966, e-mail sales@ga.gov.au



1. Location map of area NT07-2, Money Shoal Basin.
2. Regional setting of the Money Shoal Basin (hatching pattern), also showing the location of Figure 3.
3. Thickness (milliseconds two-way time) of the eastern Money Shoal Basin.
4. Seismic example illustrating potential play types in area NT07-2: sub-unconformity plays (1) below the regional Triassic unconformity within Permo-Carboniferous clastics of the Kulshill Group; stratigraphic plays (2) associated with Jurassic to Early Cretaceous fluvial channels; fault block (3) and drape (4) plays within Jurassic to Early Cretaceous (Troughton and Flamingo groups) fluvial and deltaic sediments; basin floor and slope fan plays (5) within the mid- to Late Cretaceous Bathurst Island Group.
5. Arafura and Money Shoal basins correlation chart, showing stratigraphy, seismic horizons, petroleum systems elements, and structural setting.



### MONEY SHOAL BASIN PETROLEUM PLAY ELEMENTS

Source	Troughton Group equivalent (Early to Middle Jurassic), Bathurst Island Group equivalent (Cretaceous), Darwin Formation equivalent (Early Cretaceous). From underlying Arafura Basin: Wessel Group? (Neoproterozoic), Jigaimara Formation (Middle Cambrian), Arafura Group (Late Devonian), Kulshill Group (Permo-Carboniferous).
Reservoir	Troughton Group equivalent (Jurassic), Flamingo Group (Jurassic to Early Cretaceous), Bathurst Island Group equivalent (Cretaceous). Underlying Arafura Basin: Goulburn Group (Cambro-Ordovician), Arafura Group (Devonian), Kulshill Group (Permo-Carboniferous).
Seal	Mudstones of the Flamingo Group equivalent (Late Jurassic to Early Cretaceous), mudstones of the Bathurst Island Group equivalent (Middle to Late Cretaceous). Underlying Arafura Basin: mudstones at the top and base of the Goulburn Group (Cambro-Ordovician), mudstones at the top of the Arafura Group (Devonian), dolerite sills (Permo-Carboniferous).
Traps	Large faulted anticlines and fault blocks, sub-unconformity plays, diagenetic and other stratigraphic traps in the Goulburn Graben (Arafura Basin); onlap, drape closure, combination stratigraphic/structural traps, channel and lowstand wedge plays in the Money Shoal Basin.
Infrastructure and Markets	Recent studies have reduced charge risk factor. LNG train complete and operational at Wickham Point, Darwin.