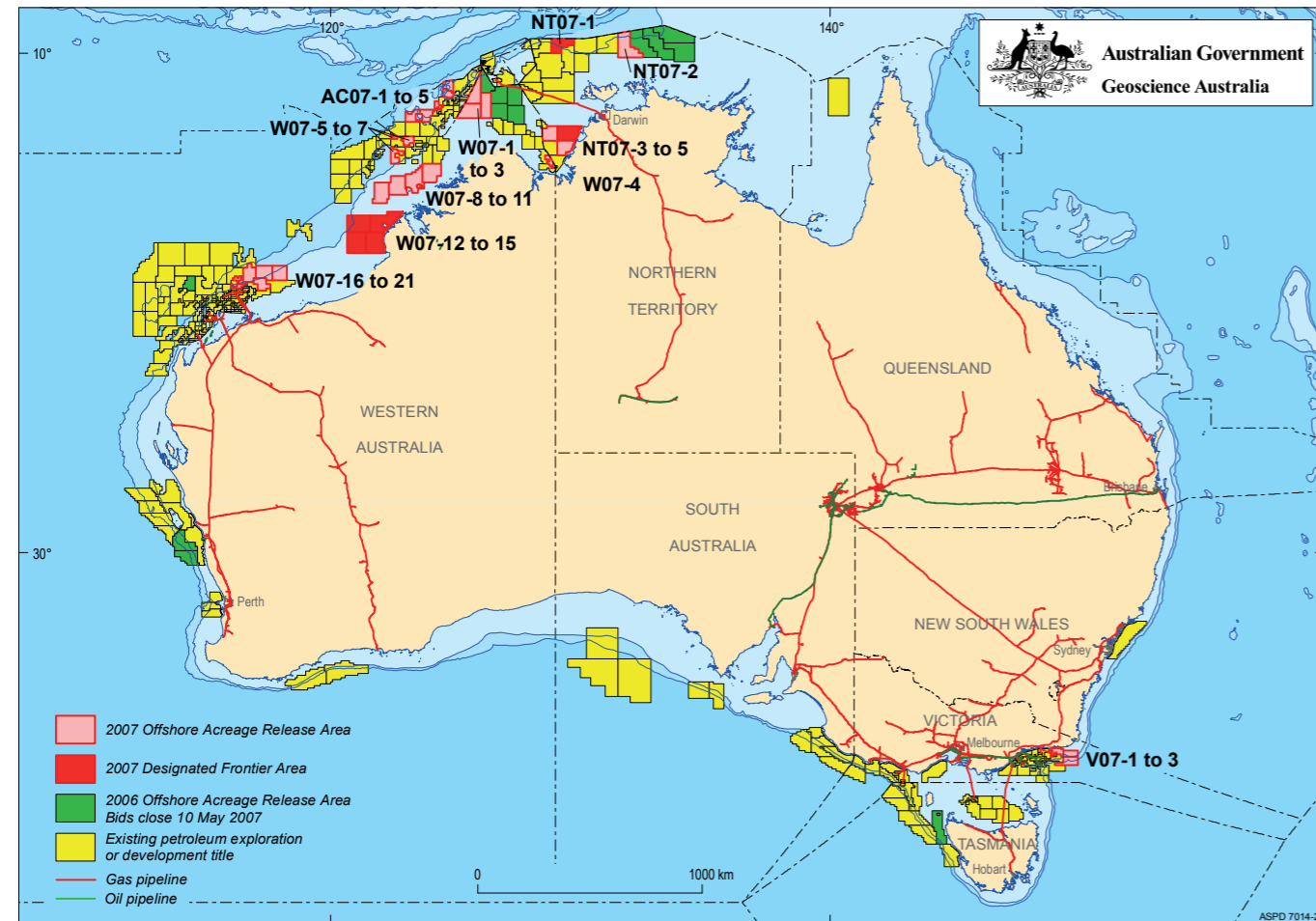


2007 Release of Offshore Petroleum Exploration Areas

The 2007 Offshore Petroleum Exploration Acreage release comprises 34 areas, located across six basins. The release areas range from frontier to mature status and offer opportunities for exploration companies of all sizes.

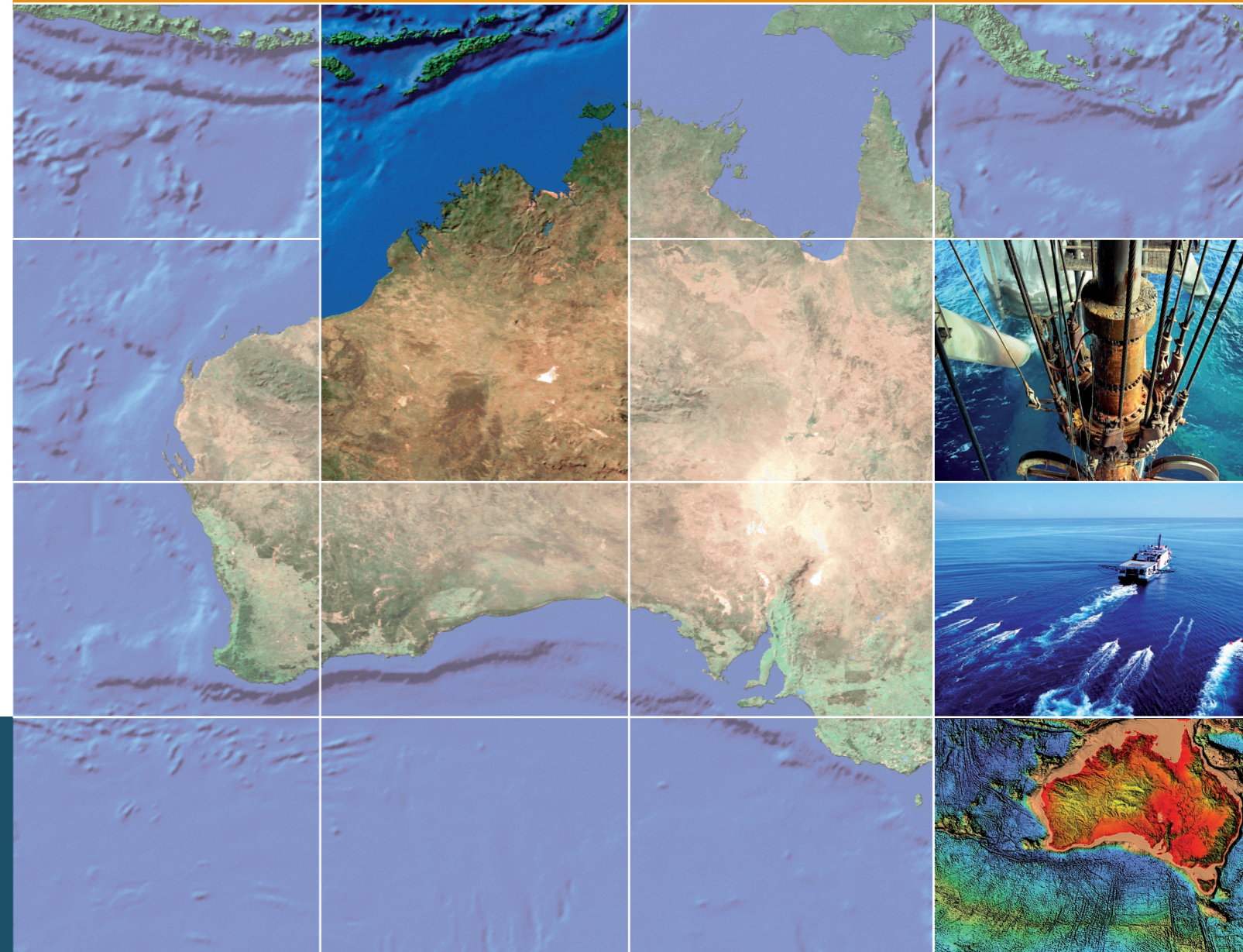
Comprehensive acreage release information packs can be obtained (free of charge) by emailing contact details to: petroleum.exploration@industry.gov.au



EXPLORE AUSTRALIA

LONDONDERRY HIGH, BONAPARTE BASIN, WESTERN AUSTRALIA

Areas W07-1, W07-2 and W07-3



FOR MORE INFORMATION CONTACT:

Mr Bob Pegler
General Manager
Offshore Resources Branch
Resources Division
Department of Industry, Tourism and Resources
GPO Box 9839, CANBERRA ACT 2601
AUSTRALIA
Telephone: +61 2 6213 7928
Facsimile: +61 2 6213 7955
E-mail: petroleum.exploration@industry.gov.au
Internet: www.industry.gov.au/petexp

FOR GEOSCIENTIFIC ENQUIRIES CONTACT:

Dr Clinton Foster
Chief of Division
Petroleum & Marine Division
Geoscience Australia
GPO Box 378, CANBERRA ACT 2601
AUSTRALIA
Telephone: +61 2 6249 9447
Facsimile: +61 2 6249 9933
E-mail: Clinton.Foster@ga.gov.au
Internet: www.ga.gov.au

BIDS CLOSE 18 OCTOBER 2007



Australian Government
Geoscience Australia

Current Exploration Opportunities in the Londonderry High, Bonaparte Basin, Offshore Australia.

Open for bids until 18 October 2007

Areas W07-1, W07-2 and W07-3

- Under-explored, shallow water areas adjacent to significant hydrocarbon discoveries.
- Evidence of oil and gas generation, migration and accumulation.
- Potential Mesozoic petroleum system along the margin of the Londonderry High and Vulcan Sub-basin.
- Tilted Permo-Triassic and Jurassic fault blocks with multiple reservoir facies.
- Various styles of structural and stratigraphic traps.
- Special Notices apply, refer to Guidance Notes.

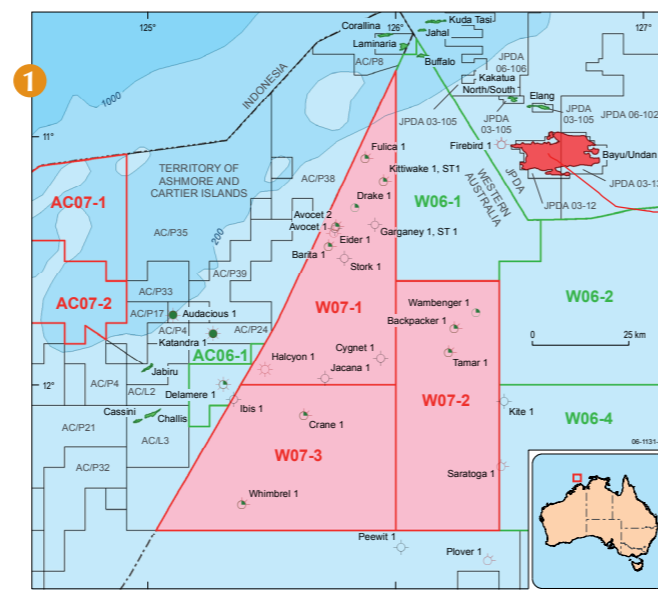
Geoscience Australia Reports/Products

New Reports/Products

- Source rock time-slice maps (TOC, HI, VR), offshore Northwest Australia - 1:3,000,000 scale (GA Catalog No. 61179).
- Oils of Western Australia II: Regional Petroleum Geochemistry and correlation of crude oils and condensates from Western Australia and Papua New Guinea (GA and GeoMark Research, 2005).

Other Reports/Products

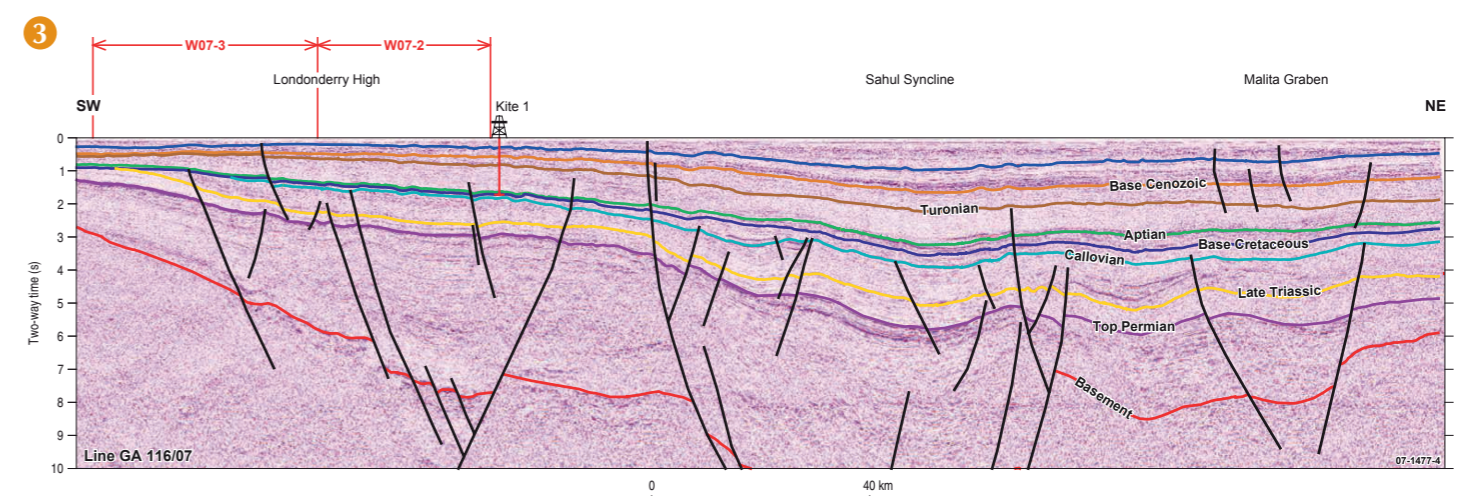
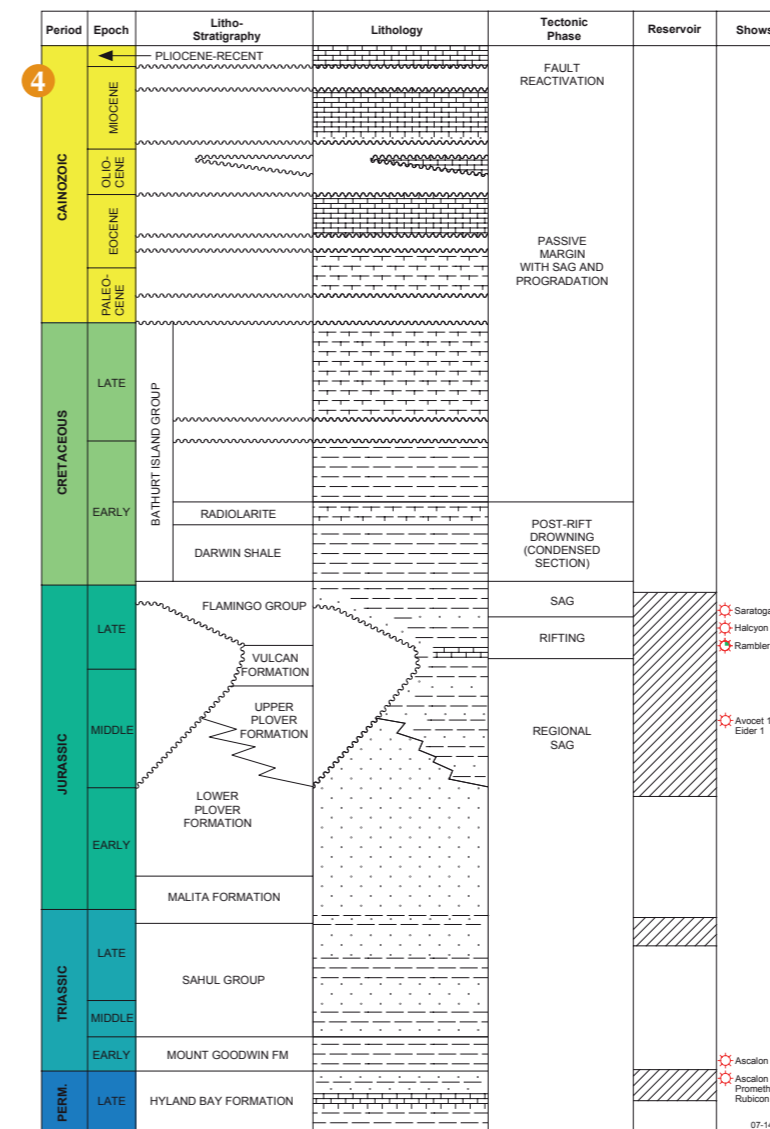
- Interpretations of Geoscience Australia's regional seismic data, Survey 98, 100, 116, 118, 119 and 130 (2001) – digital horizon and fault data in ASCII format. GA Catalog No's. 35237, 35239, 35249, 35243, 35244, 35248.
- Line drawings of Geoscience Australia's regional seismic profiles, offshore northern and northwestern Australia. GA Catalog No. 36353.
- Vulcan Sub-basin high-resolution seismic survey VTT-163 and 165, and Interpretation Report. GA Record 1996/61.
- Hydrocarbon Migration and Seepage in the Timor Sea and Northern Browse Basin, North West Shelf, Australia (2001). An integrated SAR, geological and geochemical study; GIS (ArcView) format. GA Record 2001/11. GA Catalog No. 35246.
- Characterisation of Natural Gases from West Australian Basins: Bonaparte Basin Module. GA and Geotechnical Services Non-exclusive Study, 2000.
- Oils of Western Australia: Regional Petroleum Geochemistry and correlation of crude oils. GA and GeoMark Research, 1996.
- Vulcan Sub-basin Geohistory Modelling CD. GA Record 1999/40. GA Catalog No. 31483.
- Vulcan Sub-basin Composite Well Folio CD, 1999. GA Catalog No. 25307.
- Northwestern and Northern Australian margins stratigraphic chart showing GA's interpreted regional seismic horizons, 2001. GA Catalog No. 36454.
- Basin Biozonation and Stratigraphy charts for the Northern Bonaparte Basin, Chart 15, 1998.



Contact Geoscience Australia's Sales Centre for more information or to order these reports or products, phone 61 (0)2 6249 9966, e-mail sales@ga.gov.au

Industry Products

- Australian North West Shelf Digital Atlas, www.nwsda.com



LONDONDERRY HIGH PETROLEUM PLAY ELEMENTS

Source	Early Cretaceous, Permian and Jurassic source rocks
Reservoir	Kuriyippi Formation (Late Carboniferous), Hyland Bay Formation (Late Permian), Mount Goodwin Formation (Early Triassic), Upper Plover Formation (Jurassic), Flamingo Group (Late Jurassic to Early Cretaceous).
Seal	Mount Goodwin Formation (Early Triassic) and Bathurst Island Group (Cretaceous) regional seals.
Traps	Structural fault-dependent plays and stratigraphic plays.
Infrastructure and Markets	Shallow water areas with potential for a Mesozoic petroleum system along the margin of the Londonderry High and Vulcan Sub-basin.

1. Location map of areas W07-1 to W07-3 on the Londonderry High.
2. Structural elements of the Londonderry High, also showing the location of Figure 3.
3. Geoscience Australia regional seismic line 116/07 across areas W07-2 and W07-3.
4. Stratigraphy of the Londonderry High