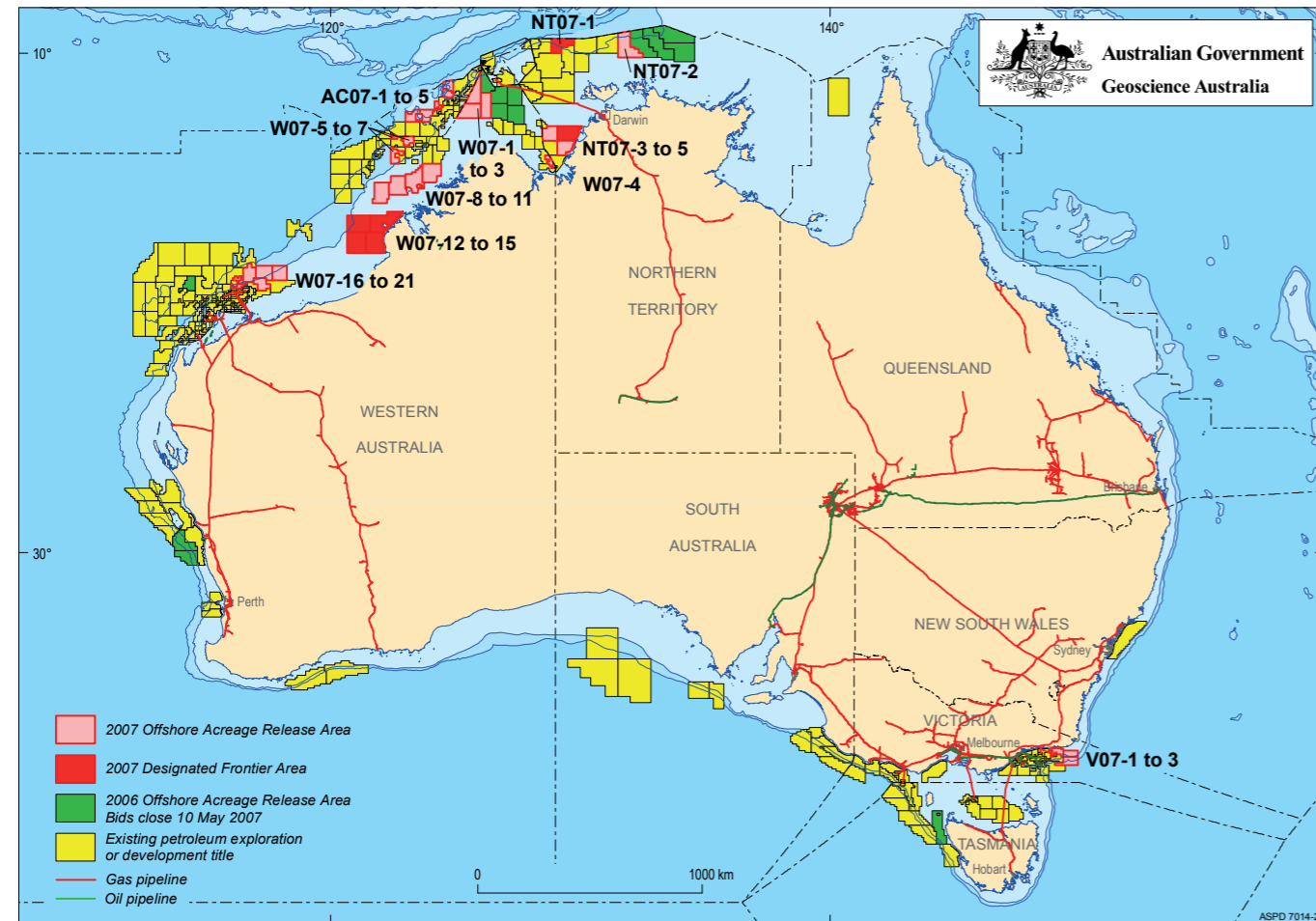


## 2007 Release of Offshore Petroleum Exploration Areas

The 2007 Offshore Petroleum Exploration Acreage release comprises 34 areas, located across six basins. The release areas range from frontier to mature status and offer opportunities for exploration companies of all sizes.

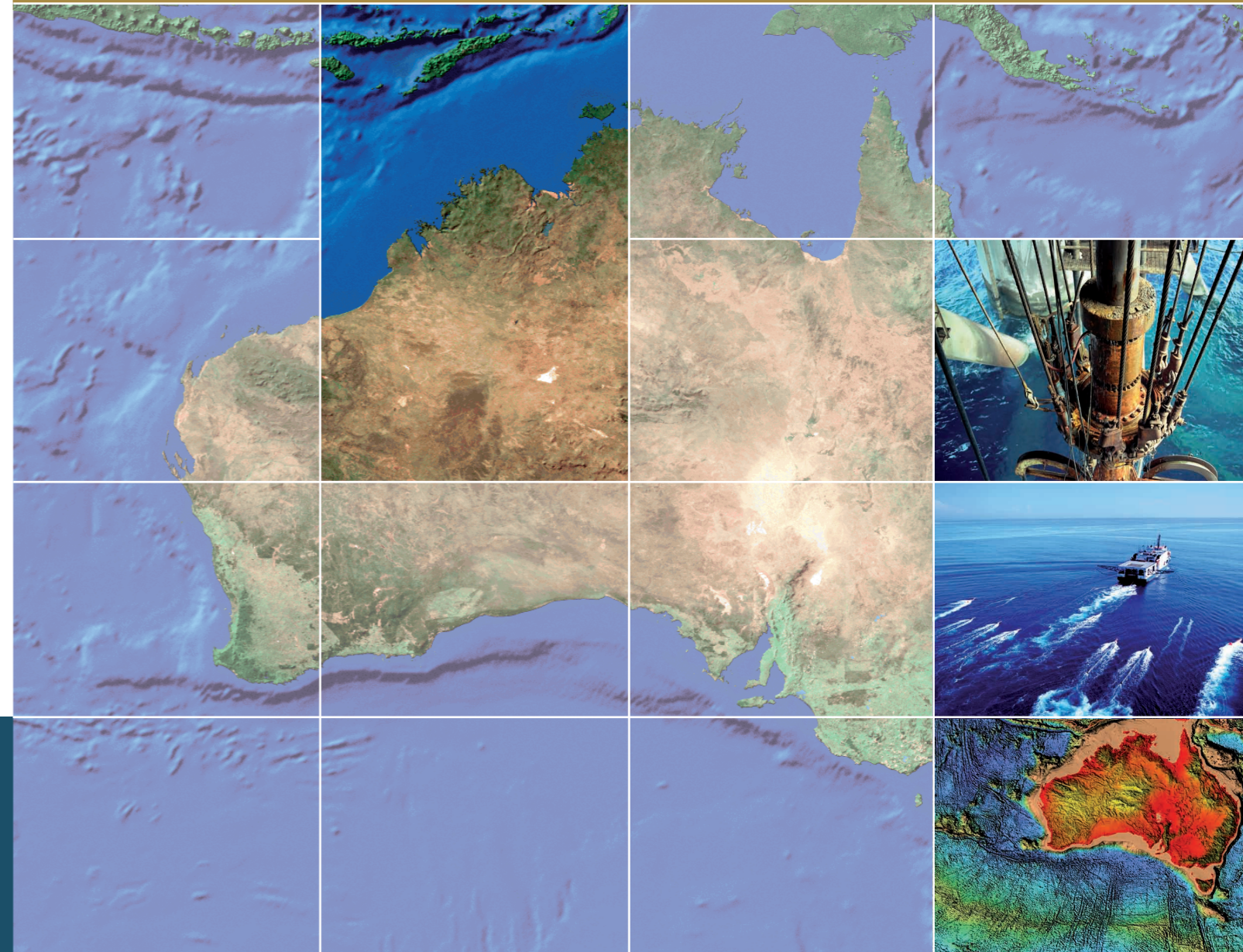
Comprehensive acreage release information packs can be obtained (free of charge) by emailing contact details to: [petroleum.exploration@industry.gov.au](mailto:petroleum.exploration@industry.gov.au)



# EXPLORE AUSTRALIA

## YAMPI-LEVEQUE SHELF, BROWSE BASIN WESTERN AUSTRALIA

Areas W07-8, W07-9, W07-10 and W07-11



### FOR MORE INFORMATION CONTACT:

Mr Bob Pegler  
General Manager  
Offshore Resources Branch  
Resources Division  
Department of Industry, Tourism and Resources  
GPO Box 9839, CANBERRA ACT 2601  
AUSTRALIA  
Telephone: +61 2 6213 7928  
Facsimile: +61 2 6213 7955  
E-mail: [petroleum.exploration@industry.gov.au](mailto:petroleum.exploration@industry.gov.au)  
Internet: [www.industry.gov.au/petexp](http://www.industry.gov.au/petexp)

### FOR GEOSCIENTIFIC ENQUIRIES CONTACT:

Dr Clinton Foster  
Chief of Division  
Petroleum & Marine Division  
Geoscience Australia  
GPO Box 378, CANBERRA ACT 2601  
AUSTRALIA  
Telephone: +61 2 6249 9447  
Facsimile: +61 2 6249 9933  
E-mail: [Clinton.Foster@ga.gov.au](mailto:Clinton.Foster@ga.gov.au)  
Internet: [www.ga.gov.au](http://www.ga.gov.au)

## BIDS CLOSE 17 APRIL 2008



Australian Government  
Geoscience Australia

# Current Exploration Opportunities in the Yampi–Leveque Shelf, Browse Basin, Offshore Australia.

## Open for bids until 17 April 2008

### Areas W07-8, W07-9, W07-10 and W07-11

- Under-explored areas adjacent to a proven Mesozoic oil and gas province.
- Water depths less than 200 m.
- Evidence of oil and gas migration.
- Thick Early–Middle Jurassic (Plover Formation) and Early Cretaceous (upper Vulcan, Echuca Shoals formations) sediments with possible source potential.
- Special Notices apply, refer to Guidance Notes.

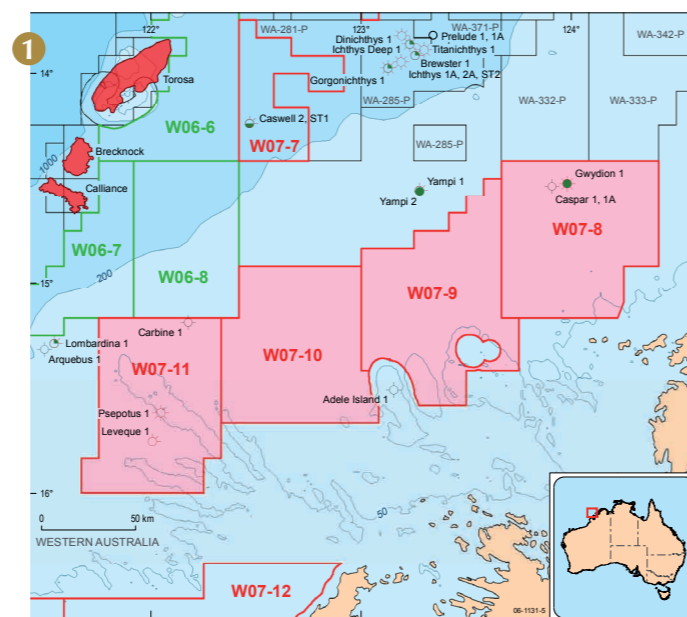
### Geoscience Australia Reports/Products

#### New Reports/Products

- Browse Basin Composite Well Logs (2005), GA Catalog No. 61819.
- Oils of Western Australia II: Regional Petroleum Geochemistry and correlation of crude oils and condensates from Western Australia and Papua New Guinea (GA and GeoMark Research, 2005).
- Source rock time-slice maps (TOC, HI, VR), offshore Northwest Australia - 1:3,000,000 scale. GA Catalog No. 61179.
- Testing natural hydrocarbon seepage detection tools on the Yampi Shelf, northwestern Australia. GA Catalog No. 61717

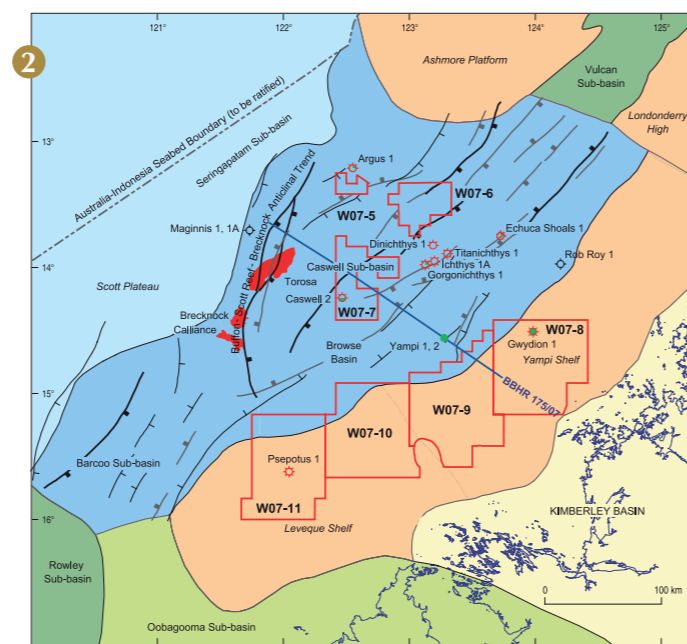
#### Other Reports/Products

- Browse Basin Biozonation and Stratigraphy Chart 7 (2001). GA Catalog No 36593
- Browse Basin high-resolution seismic survey BBHR-175, and Interpretation Report. GA Record 1997/38.
- Browse Basin Organic Geochemistry Study. GA Record 1997/57.
- Characterisation of Natural Gases from West Australian Basins: Browse Basin Module (GA and Geotechnical Services Non-exclusive Study, 2000).
- Interpretations of Geoscience Australia's regional deep-seismic data, Survey 119, 130 (2001) – digital horizon and fault data in ASCII format. GA Catalog No. 35244, 35248.
- Interpretative Study of Hydrocarbon Migration and Seepage in the Timor Sea and Northern Browse Basin (2001). GIS format (ArcView) on CD. GA Catalog No. 35246.



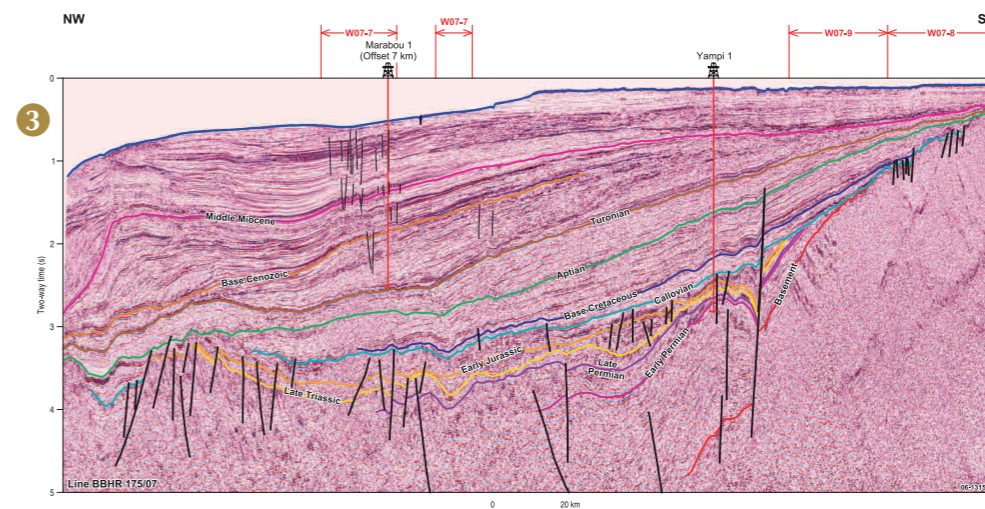
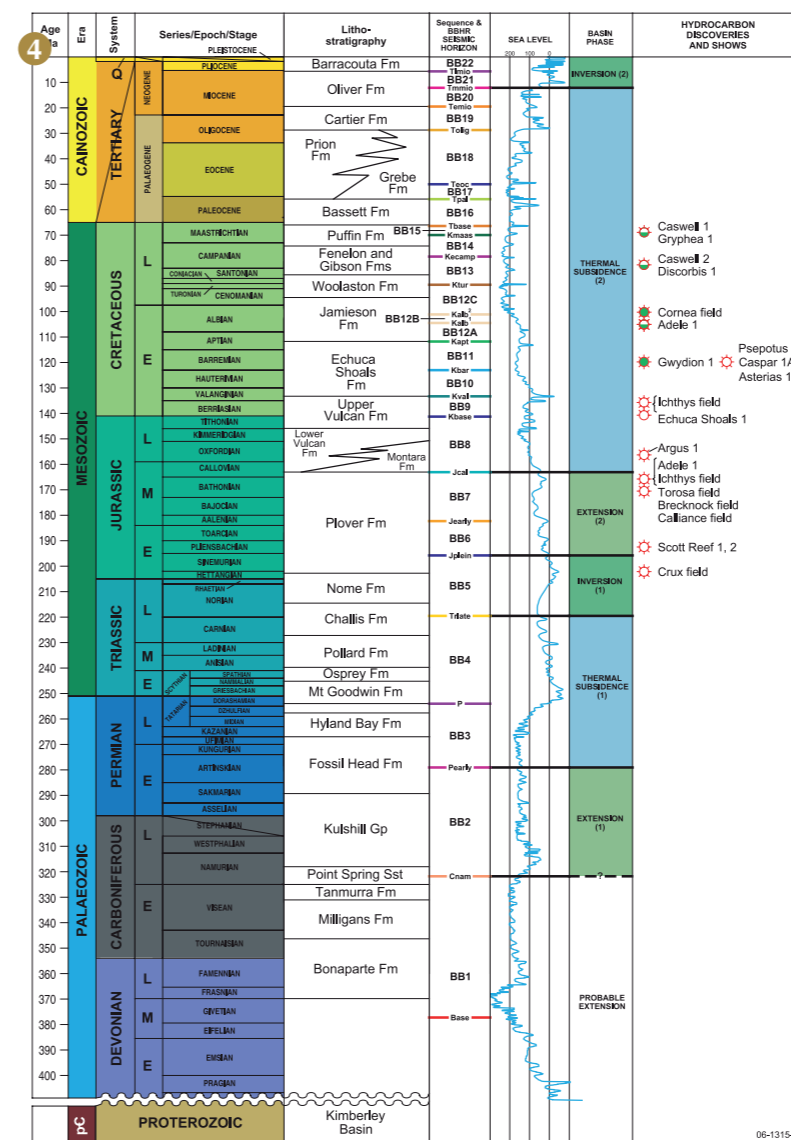
Field outlines supplied by Encom Petroleum Information Pty Ltd

2007 release area  
2006 release area  
Existing petroleum exploration or development permit  
-500 - Bathymetric contour (depth in metres)



Late Palaeozoic to Mesozoic basin  
Platform of Precambrian / Palaeozoic with thin (<2 km) sedimentary cover  
Shallow-exposed Precambrian rocks or Proterozoic basin  
Palaeozoic basin  
Major Palaeozoic fault  
Minor Palaeozoic fault  
Jurassic fault

Contact Geoscience Australia's Sales Centre for more information or to order these reports or products, phone 61 (0)2 6249 9966, e-mail sales@ga.gov.au



### YAMPI-LEVEQUE SHELF PETROLEUM PLAY ELEMENTS

Source	Plover Formation (Early to Middle Jurassic), Vulcan Formation (Late Jurassic), Echuca Shoals and Jamieson Formations (Early Cretaceous),
Reservoir	Plover Formation (Early to Middle Jurassic), Vulcan Formation (Middle Jurassic to Early Cretaceous), Echuca Shoals Formation (Early Cretaceous).
Seal	Vulcan Formation (Middle Jurassic to Early Cretaceous) and Echuca Shoals Formation (Early Cretaceous) regional seals. Plover Formation (Early to Middle Jurassic).
Traps	Faulted anticlines, horsts/tilted fault blocks, drape anticlines and stratigraphic traps.
Infrastructure and Markets	Likely region for future gas development, with development plans and Brewster/Ichthys field and appraisal drilling of Calliance and Torosa fields.

1. Location map of areas W07-8 to W07-11 in the Yampi-Leveque Shelf, Browse Basin showing existing petroleum title areas and known petroleum fields and discoveries.
2. Regional setting of the Browse Basin also showing the location of seismic line BBHR 175/7 (Fig 3).
3. Seismic line BBHR 175/7 through Marabou 1, central Caswell Sub-basin to Yampi 1 on the Yampi Shelf.
4. Tectonostratigraphic summary and hydrocarbon discoveries for the Browse Basin.