

## Call for Expressions of Interest to subscribe to a regional airborne electromagnetic survey in northern Australia

As part of the [Exploring for the Future program](#), Geoscience Australia will be conducting a regional airborne electromagnetic (AEM) survey from the Hamersley Ranges WA to the Lake Mackay region in NT (approximately 1,150,000 km<sup>2</sup>), starting in February 2019. The survey will consist of 20 km spaced lines over parts of the Broom, Halls Creek, Newcastle Waters, Hamersley Range, Oakover River, Lake Mackay, Alice Springs, Wiluna, Petermann Ranges and Oonadatta 1:1,000,000 standard map sheets, as shown in Figure 1 (diagram below).

The data collected will contribute to mapping regional features of the regolith, geology and hydrogeology and understanding the mineral and groundwater resource potential of the survey areas.

Geoscience Australia is inviting interested companies to subscribe to the survey. This opportunity will enable participants to obtain competitive pricing, as Geoscience Australia will cover mobilisation and stand-by costs, and 'fit for purpose' data that have been subject to Geoscience Australia's stringent quality assurance and quality control procedures.

Due to the size of the survey, the data are expected to be available approximately 6–12 months after completion of the survey.

Participation is subject to the following conditions:

- The proposed boundary for the infill area must be a simple polygonal shape.
- Each infill area must be no less than 200 line km in total.
- The minimum flight line length will be 8 kilometres.
- There will be no supply of any data to subscribers prior to the public release of the regional (non-infill) line data.
- There will be a one year moratorium period during which infill data will only be available to the relevant subscriber company and Geoscience Australia, after which it will be publically released. The one year moratorium will begin from the date of supply of the infill data.
- Geoscience Australia will release a Quotation Request to its panel of AEM providers. After Geoscience Australia selects the preferred system and supplier and a firm line kilometre rate is known, participants will be given the opportunity to either opt-in or opt-out. Participants who opt-in will be required to sign an agreement guaranteeing funding for their infill survey, before Geoscience Australia enters into a contract with the preferred supplier.

Geoscience Australia will select infill areas that will complement the objective of the survey.

Expressions of Interest must be submitted by C.O.B AEDT **Tuesday 11 December 2018** and include a regular shaped polygon of the desired infill/extension area with the corner coordinates listed in tabular form. The preferred flight line spacing and direction must also be supplied for each polygon.

Geoscience Australia is also seeking assistance with borehole geophysical induction conductivity logging from tenement holders in the survey area.

For more information please contact:

[MineralGeophysics@ga.gov.au](mailto:MineralGeophysics@ga.gov.au) or

Yusen Ley-Cooper: [yusen.leycooper@ga.gov.au](mailto:yusen.leycooper@ga.gov.au) or +61 2 6249 9374

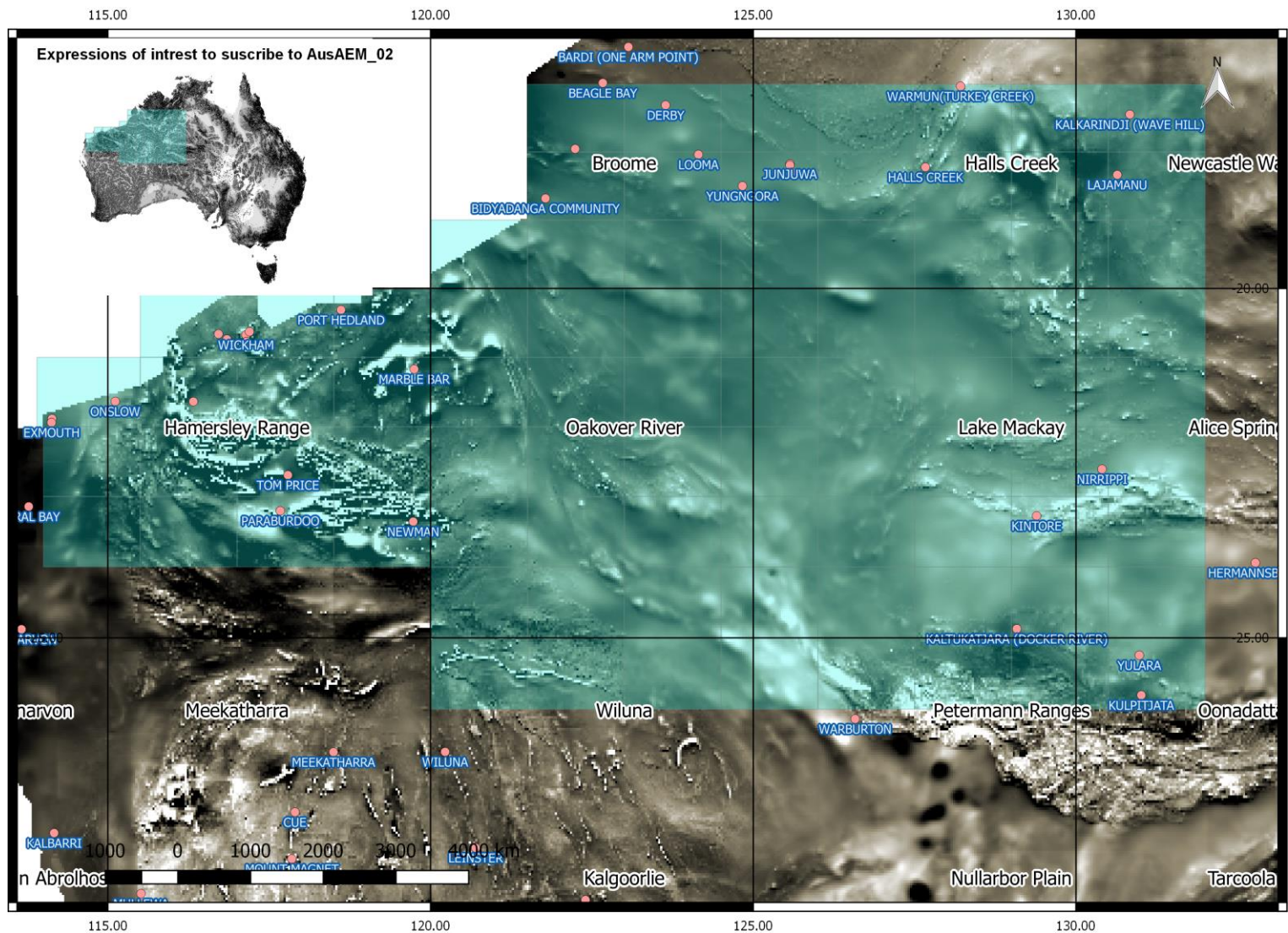


Figure 1 Locality map showing the proposed regional survey area (green shading) to be covered at 20 km line spacing.