



Australian Government  
Geoscience Australia

# Regional Geology of the Otway Basin

Earth sciences for Australia's future | [ga.gov.au](http://ga.gov.au)

**Department of Industry, Science and Resources**

Minister for Resources and Minister for Northern Australia: the Hon Madeleine King MP

Secretary: Meghan Quinn PSM

**Geoscience Australia**

Chief Executive Officer: Melissa Harris PSM



**Geoscience Australia: A Journey of Connection**

Artwork by Lani Balzan

Geoscience Australia values the lands, water and sky as we work to deepen a shared understanding of Country and Earth. We respect First Nations peoples and their enduring connection, contribution and obligations to Country. Reflecting on our shared history, we are committed to listen and learn.



© Commonwealth of Australia (Geoscience Australia) 2025.

With the exception of the Commonwealth Coat of Arms this product is provided under a Creative Commons Attribution 4.0 International Licence. (<http://creativecommons.org/licenses/by/4.0/legalcode>). This product is provided subject to the Disclaimer of Warranties and Limitation of Liability in section 5 of the Creative Commons Attribution 4.0 International Licence. Therefore, you should not solely rely on this information for any purpose.

Geoscience Australia is committed to providing web accessible content wherever possible. If you are having difficulties with accessing this document please email [clientservices@ga.gov.au](mailto:clientservices@ga.gov.au).

**Bibliographic reference:** Geoscience Australia, 2025. Regional Geology of the Otway. Geoscience Australia, Canberra. <https://www.ga.gov.au/petroleum>



# Contents

Regional Geology of the Otway Basin.....	1
Regional Geology of the Otway Basin.....	1
Basin outline .....	1
Basin evolution and stratigraphy.....	1
Exploration history .....	14
Production and development .....	18
Regional petroleum systems .....	20
Source Rocks.....	20
Petroleum Systems Elements .....	24
Reservoirs and seals.....	24
Timing of generation .....	27
Petroleum Systems Modelling 2021-2023.....	27
Play types .....	28
Geoscience Australia products and data .....	31
Data discovery tools .....	31
Marine and environment information .....	32
Marine Parks.....	32
Biologically important areas .....	35
Heritage .....	36
Fisheries .....	36
Climate of the region .....	37
Oceanic regime .....	37
Seabed environments: regional overview .....	38
Ecology .....	38
Quaternary geological history .....	38
National seabed mapping data and information.....	38
Other online information resources .....	40
References .....	41

# Regional Geology of the Otway Basin

The Otway Basin is a broadly northwest to southeast striking rift basin that extends for approximately 500 km along the onshore and offshore parts of southeastern Australia (Figure 1). The basin covers an area of approximately 165 000 km<sup>2</sup> in offshore Victoria, South Australia and Tasmania and onshore Victoria, South Australia. Approximately 83% of the basin is located offshore and 17% onshore.

The Otway Basin is an important gas-producing region with discoveries onshore and in shallow water areas offshore approximately 170–220 km west-southwest of Melbourne, the State Capital of Victoria, delivering gas to the southeastern Australian energy market (Figure 2). Natural gas from Victoria, transported via the Port Campbell–Adelaide pipeline and the South East South Australia Pipeline, powers the 80 MW Ladbroke Grove power station adjacent to the Katnook facility. This gas also supplies markets serviced by the South East Pipeline System, replacing declining supply from the local onshore fields (Figure 3). The greater Melbourne region represents a large domestic gas market. Portland, on the western Victorian coast, is a deep-water port suited to offshore operations and is serviced by an excellent road and rail network.

## Basin outline

Several depocentres developed in response to two major phases of extensional tectonism; the first, in the latest Jurassic–Early Cretaceous, and the second in the Late Cretaceous. The first extensional phase led to development of small depocentres such as the Robe, Colac, Gellibrand, and Penola troughs in the onshore part of the basin. The second phase of extension was focused outboard of the Tartwaup and Mussel Fault zones, forming the Nelson Sub-Basin, followed by the Morum and Hunter sub-basins. These outboard sub-basins together make up the Deepwater Otway Basin, while the region inboard of the Tartwaup and Mussel fault zones is referred to as the Inner Otway Basin (Totterdell et al, 2014; Nicholson et al, 2024). The Inner Otway Basin includes such structural elements as the Mussel Platform, Prawn Platform, Shipwreck Trough, and Torquay Sub-basin (Figure 4). The Torquay Sub-basin contains a Lower Cretaceous syn-extensional succession, similar to other Lower Cretaceous depocentres in the Inner Otway Basin, overlain by a thin Upper Cretaceous succession that has affinities with the Upper Cretaceous sediments in the Bass Basin (Trupp et al, 1994; Blevin and Cathro, 2008; Totterdell et al, 2014).

## Basin evolution and stratigraphy

With the onset of the major rifting phase in the Late Jurassic, several east-northeast-trending extensional depocentres were generated, these developed into the Robe, Colac and Gellibrand troughs in the Inner Otway Basin. Older parts of the Portland Trough and the Torquay Sub-Basin may also be related to this extensional phase (Trupp et al, 1994; Perincek and Cockshell, 1995). The Penola Trough and most of the Portland Trough were formed by southeasterly transtension between the original rifts, as extension continued. Final break-up in the Otway Basin probably occurred in the Maastrichtian at about 67 Ma (Lavin, 1997).

For detailed descriptions of the sedimentary history and stratigraphy of the Otway Basin, see to publications by Parker (1995), Lavin (1997), Geary and Reid (1998), Boyd and Gallagher (2001), Constantine (2001), Partridge (2001), Krassay et al (2004) and Palmowski et al (2004).

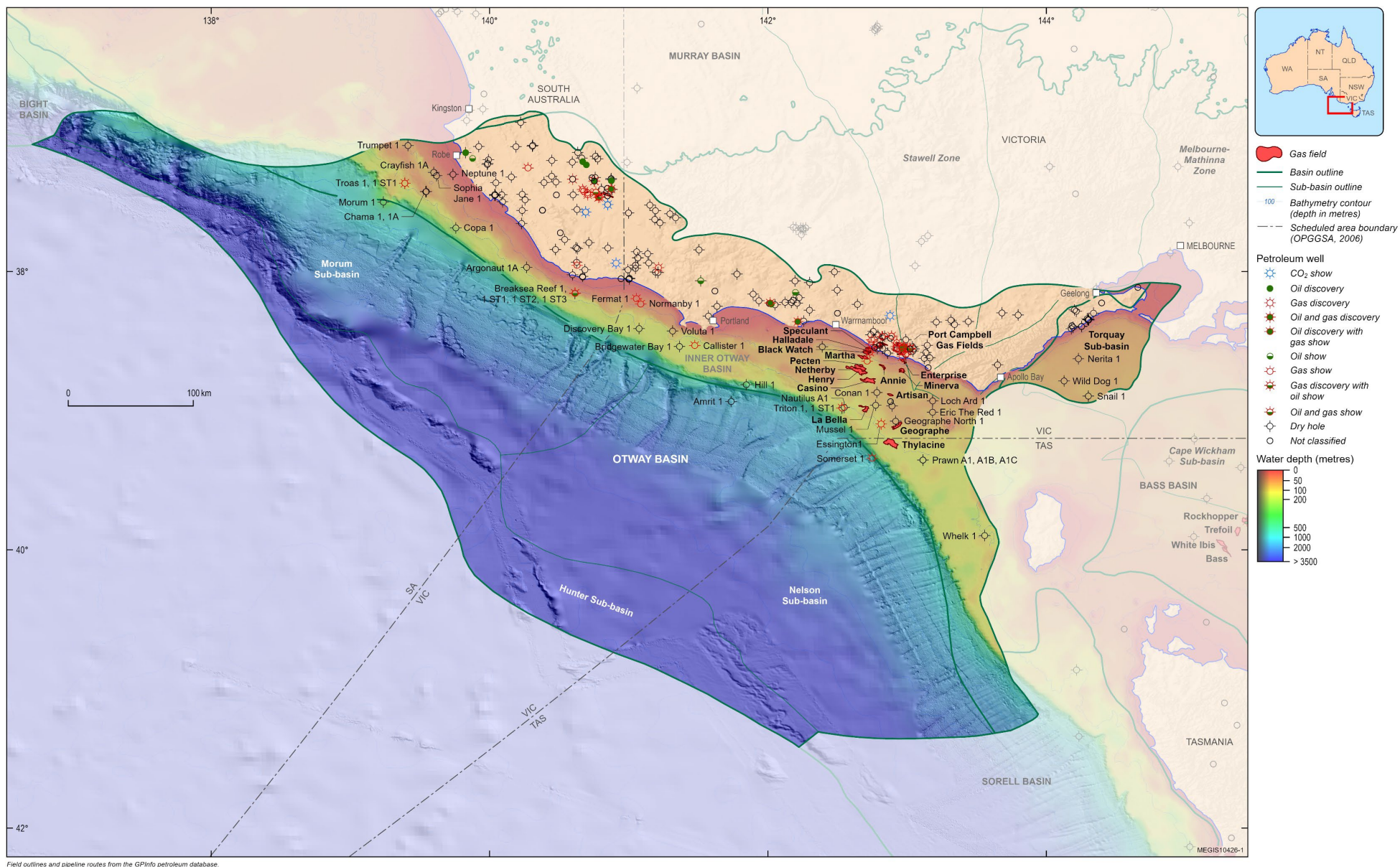


Figure 1 Map of the Otway Basin showing bathymetry, petroleum well distribution and oil and gas fields.





Figure 2 Map showing the pipeline network in south-eastern Australia



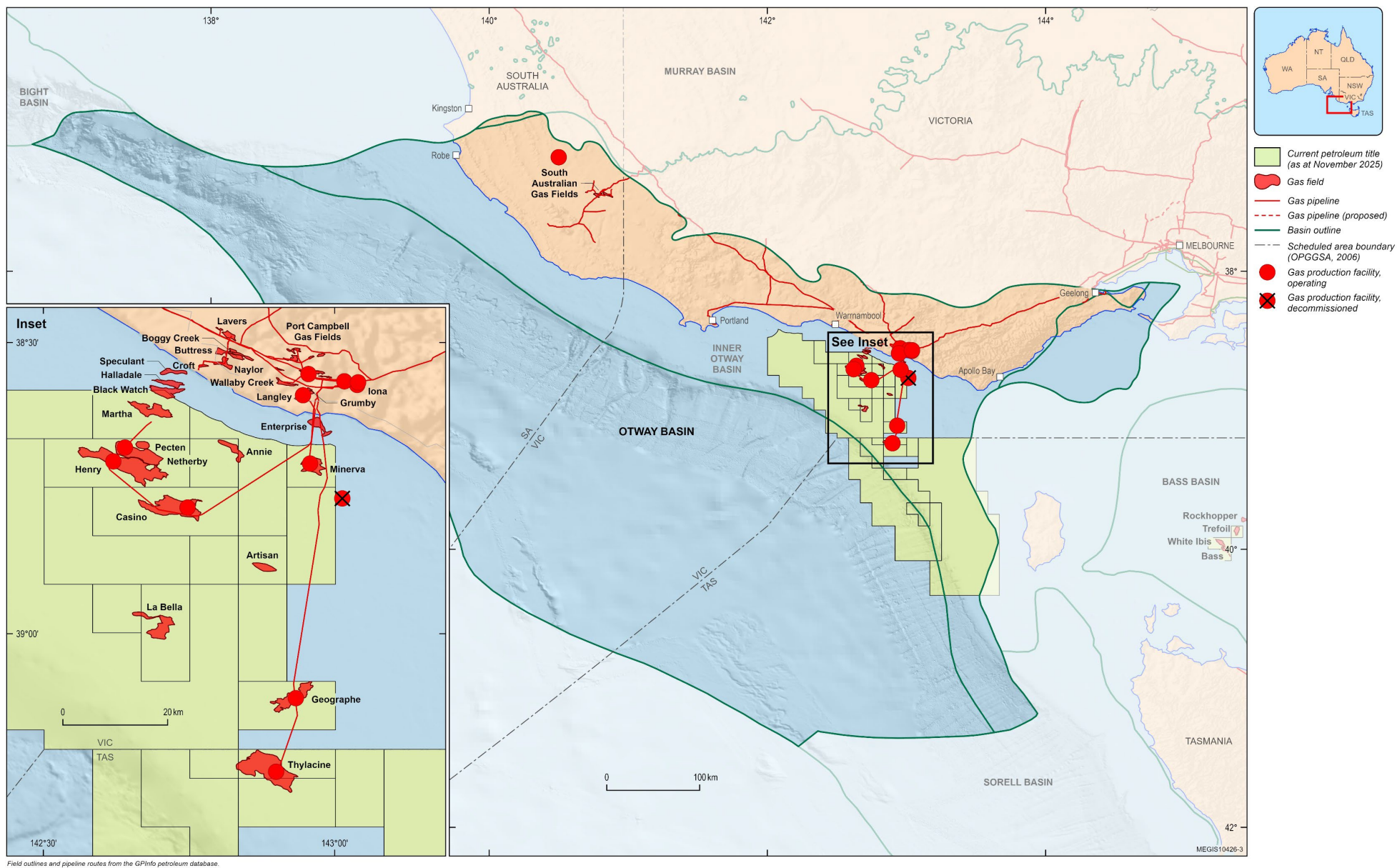


Figure 3 Map showing petroleum exploration permits, gas fields and petroleum production facilities in the Otway Basin.

### ***Early Rifting (Late Jurassic-Early Cretaceous)***

Extension commenced in the latest Jurassic and progressed into the Early Cretaceous and the various, initially distinct rift basins expanded substantially. More than 5000 m of fluvio-lacustrine Otway Group (Figure 5) sediments filled these depocentres. The Robe and Penola troughs provide records of Early Cretaceous sedimentation (Figure 5 and Figure 6). The lacustrine sediments and interbedded flow basalts of the Casterton Formation are overlain by the predominantly fluvial sediments of the Pretty Hill Formation which are, in turn, overlain by lower energy fluvial and lacustrine sediments of the Laira Formation. The overlying Katnook Sandstone represents the return to higher energy fluvial deposition.

### ***Rift to Sag Transition (Aptian-Albian)***

The influence of the main extensional faults that controlled the Late Jurassic to Early Cretaceous rifting waned in the early Aptian across most of the Otway Basin. Previously elevated footwall blocks disappeared as widespread thermal subsidence occurred across the basin. Over 4000 m of Aptian to Albian sediments belonging to the Eumeralla Formation were deposited in a progressively widening, regional sag basin. Sediments accumulated in a variety of non-marine depositional environments including fluvial, flood plain, coal swamp and lacustrine. These sediments are characterised by a large amount of volcanoclastic detritus, derived from local intra-rift sources (Duddy, 2003) or from volcanic complexes located to the east of the Gippsland Basin (Bryan et al, 1997).

### ***Compression, Uplift and the Otway Unconformity (mid-Cretaceous)***

Rifting ceased in the late Albian as the Otway Basin was subjected to significant compression giving rise to the basin-wide, angular Otway Unconformity (Partridge, 2001). Several areas including the Otway Ranges and the Cape Otway-King Island High underwent several kilometres of inversion. However, structuring was not uniform across the basin, with many areas experiencing only mild uplift. Recent basin modelling indicates little erosion in the offshore during this time (Tassone 2014), with erosion limited to high fault blocks. Studies of apatite fission track (AFT) data and vitrinite reflectance (VR) data from wells in the basin, suggest that it experienced regionally elevated temperature gradients (50-60°C/km) in the Early Cretaceous (Foster and Gleadow, 1992; Duddy, 1994; O'Brien et al, 1994; Cooper and Hill, 1997; Mitchell, 1997). Driven by uplift and erosion, the heat-flow and associated geothermal gradient decreased sharply in the early Late Cretaceous.

### ***Renewed Rifting (Late Cretaceous)***

A renewed phase of extension and rift-related subsidence began in the Turonian. Rifting continued to control basin development through the Late Cretaceous until the latest Maastrichtian when final continental breakup took place (Lavin and Naim, 1995; Lavin, 1997). The second rifting phase was driven by a change in crustal extension direction to northeast-southwest, from the earlier north-south direction. This created a structural style distinctly different from that developed by the earlier rifting. In the offshore, where the Late Cretaceous rifting was concentrated, the resulting structures overprinted those of the initial rift phase. Most of the major structural features, Nelson Sub-Basin, Morum Sub-Basin, Mussel Platform, Prawn Platform, Tartwaup-Mussel Fault System, Shipwreck Trough and Sorell Fault Zone (Figure 4), were formed by the Late Cretaceous rifting. In the Shipwreck Trough sinistral strike-slip motion resulted in the development of the transpressional, north-trending, Shipwreck Fault Zone. North-trending anticlinal structures are particularly well developed within and flanking the Shipwreck Trough. The Upper Cretaceous Sherbrook Supersequence (Figure 8) is dominated by deltaic sandstone and mudstone, and offshore mudstone with minor fluvial sandstone (Abbott et al 2023; Cubitt et al, 2023; Abbott et al, 2024).

### ***Continental Break-up (late Maastrichtian)***

Moderate structuring and regional uplift which accompanied the late Maastrichtian continental break-up along this part of the margin, resulted in development of the Late Maastrichtian Unconformity, which separates pre-rift from post-rift strata. Post-rift (latest Maastrichtian to Holocene) sediments were deposited along the continental shelf in a passive margin setting, as Antarctica separated and drifted further away from Australia with concomitant opening of the Southern Ocean. The post-rift succession is subdivided into the Wangerrip, Nirranda and Heytesbury groups (Figure 5).

### ***Thermal Subsidence and Marine Transgression (Paleocene-early Eocene)***

The peneplain represented by the Late Maastrichtian Unconformity was flooded during the first major transgression of the incipient Southern Ocean towards the end of the Maastrichtian, initially depositing the Massacre Shale (Figure 8) which accumulated in a distal offshore environment of uncertain water depth (Partridge, 1999). This was followed by the creation of shallow marine to coastal depositional environments in which the Pebble Point Formation accumulated. This sequence is succeeded by progradational Paleocene to early Eocene sediments belonging to the Pember Mudstone which was deposited in shelfal to shallow marine environments on a southwesterly building marine shelf that trended approximately parallel to the modern coastline (Arditto, 1995). The Pember Mudstone is partly equivalent to, and partly succeeded by, the Dilwyn Formation which was deposited in coastal plain and deltaic environments. In the Torquay Sub-basin and Colac Trough, the mid-Campanian to early Eocene time interval is represented by terrestrial sediments of the Eastern View Coal Measures (Figure 9).

### ***Seafloor Spreading in Southern Ocean (middle Eocene-early Oligocene)***

The Middle Eocene Unconformity separates the Wangerrip Group from the overlying Nirranda Group. This unconformity, which is widespread on the southern Australian margin, is correlated with minor tectonism produced by a significant increase in the rate of seafloor spreading in the Southern Ocean south of Australia (Yu, 1988). The erosional surface, which in some parts of the Otway Basin is incised by steep channels and exhibits considerable relief, is infilled and draped by sediments of the middle Eocene to lower Oligocene Nirranda Group. The Nirranda Group comprises prograding nearshore to offshore marine clastics of the basal Mepunga Formation that grade upwards into increasingly open marine carbonates of the Narrawaturk Marl. Both formations are time equivalent to the proximal Demons Bluff Formation and Eastern View Coal Measures recognised onshore in the northeastern part of the Otway Basin and Torquay Sub-basin (Abele et al, 1976; Blake, 1980; Tickell, 1991). In South Australia, Cenozoic strata of the Wangerrip, Nirranda and Heytesbury Groups are assigned to the Gambier Basin, known previously as the Gambier Embayment of the Otway Basin (Smith et al, 1995) (Figure 10).

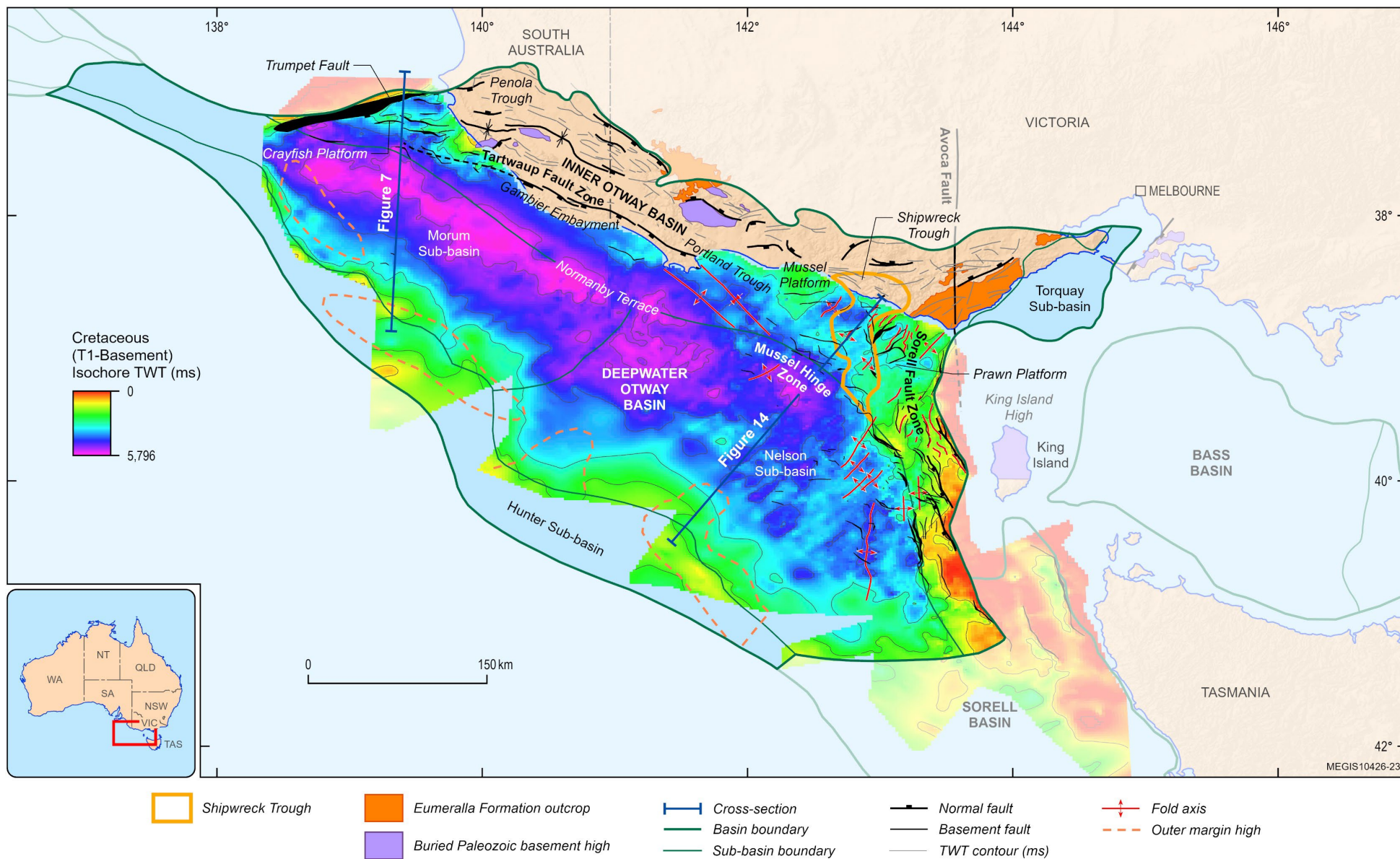


Figure 4 Tectonic elements map of the Otway Basin showing bathymetry, petroleum well distribution and gas fields.



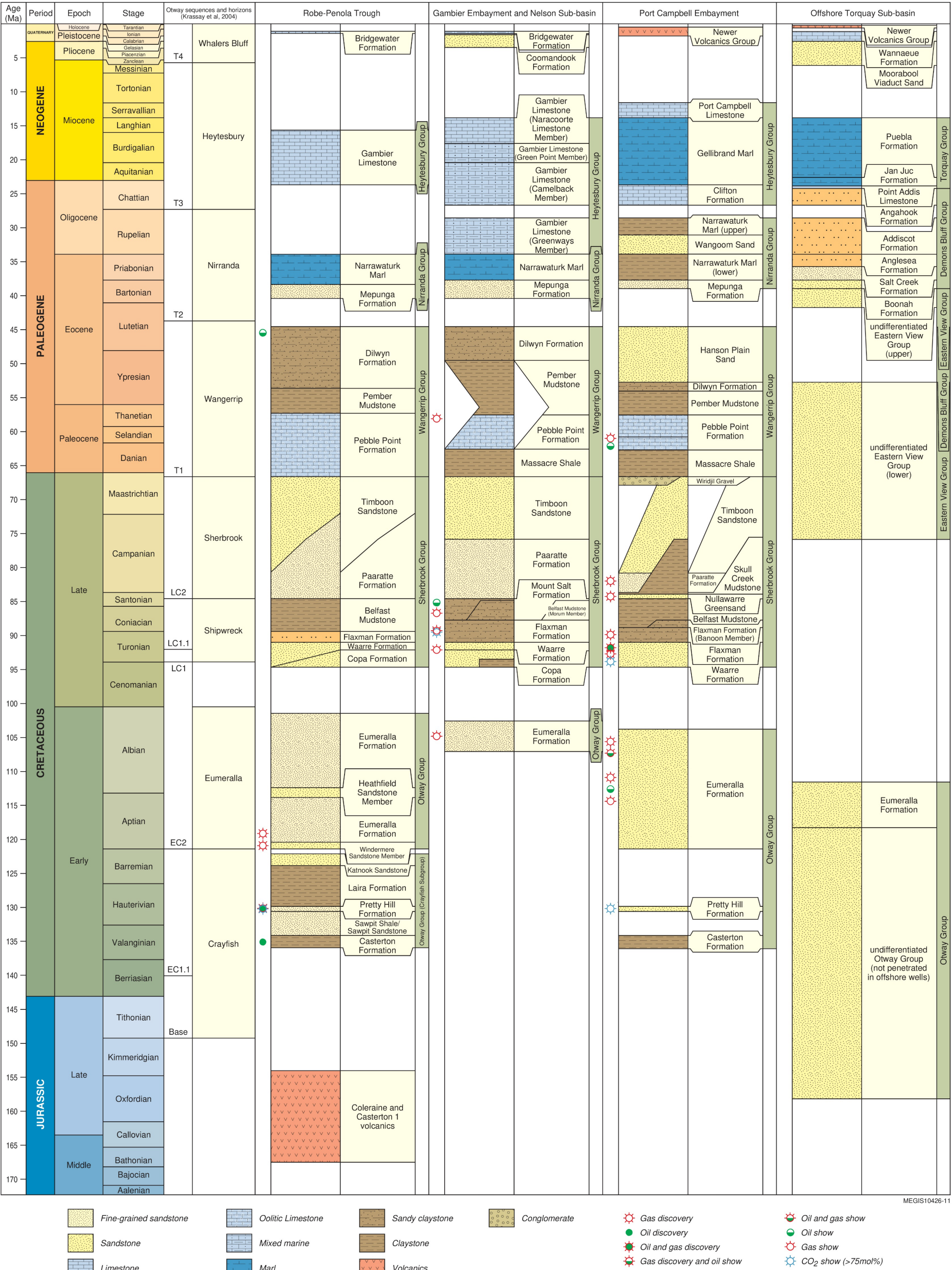


Figure 5 Stratigraphic chart for the Otway Basin showing hydrocarbon occurrences (after Kelman et al, 2015 Geologic Time Scale after Gradstein et al, 2020).

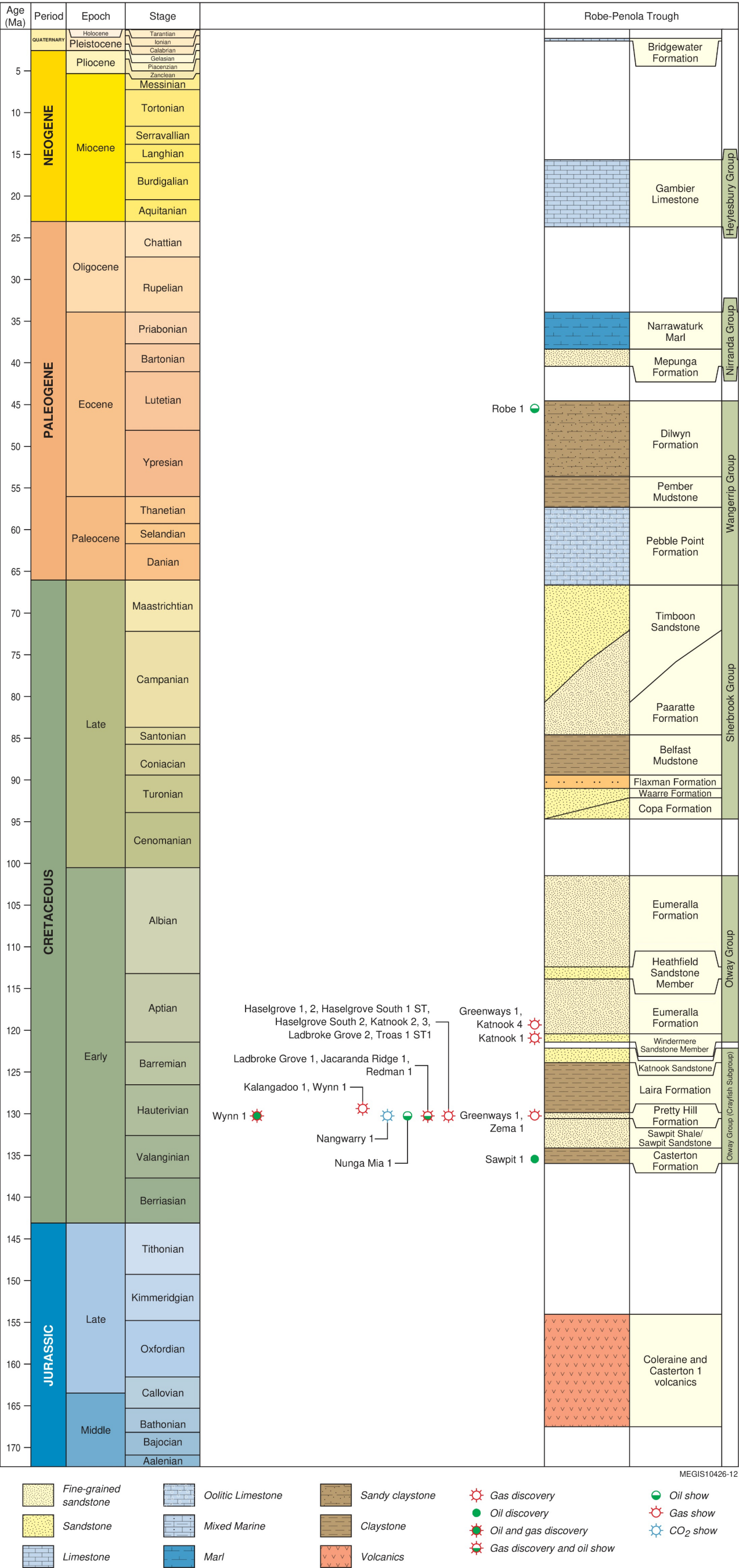


Figure 6 Stratigraphic chart for the Robe Trough and Penola Trough showing well intersections of hydrocarbons (after Kelman et al, 2015; Geologic Time Scale after Gradstein et al, 2020).



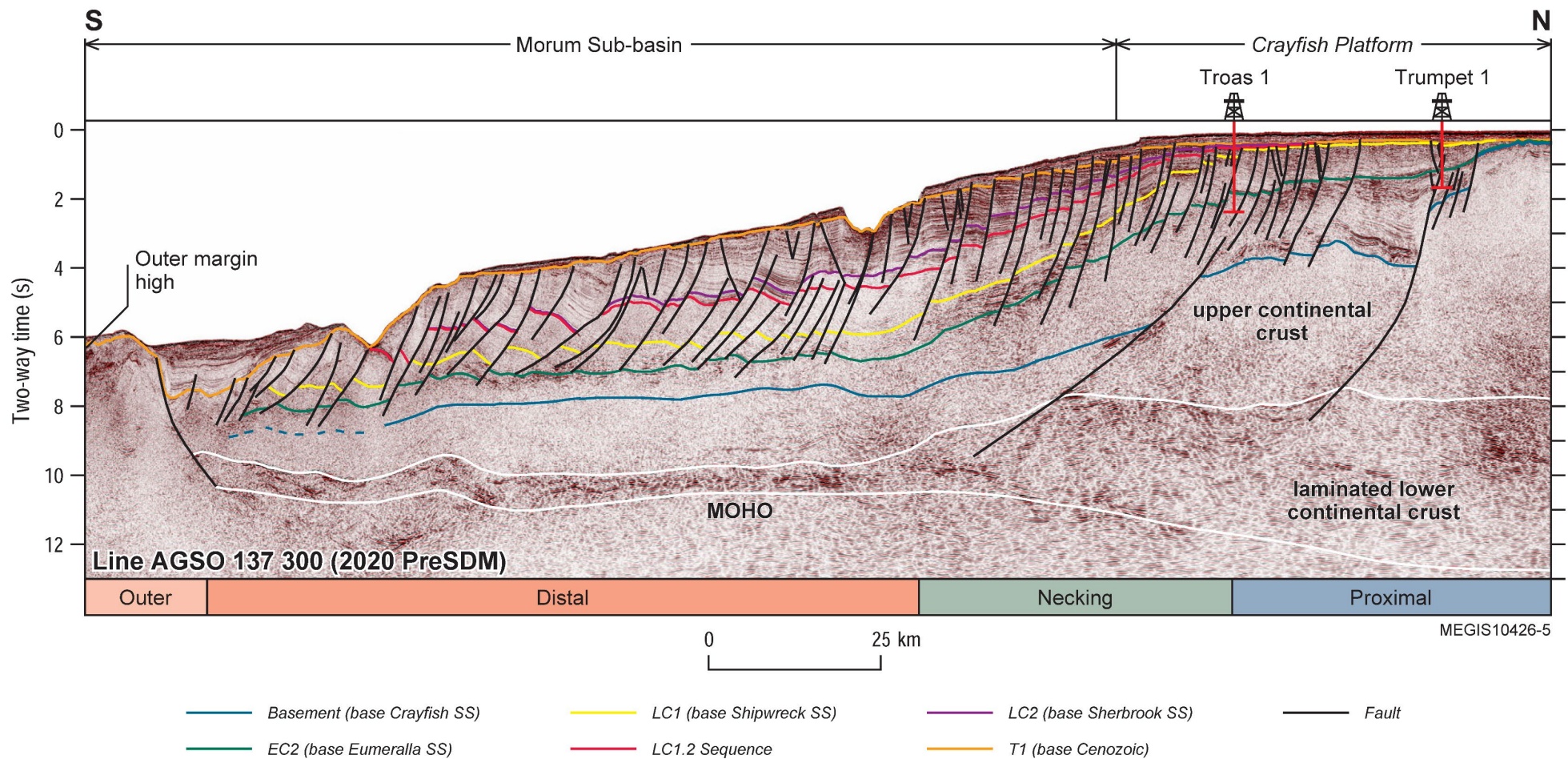


Figure 7 Seismic stratigraphy and structure interpretation of the Cretaceous and deep crustal reflectors from the Crayfish Platform to the Morum Sub-basin, offshore Otway Basin. Proximal, Necking, Distal and Outer structural domains illustrate progressive crustal thinning outboard, corresponding with thickening of Cretaceous sediments (after Nicholson et al., 2024).

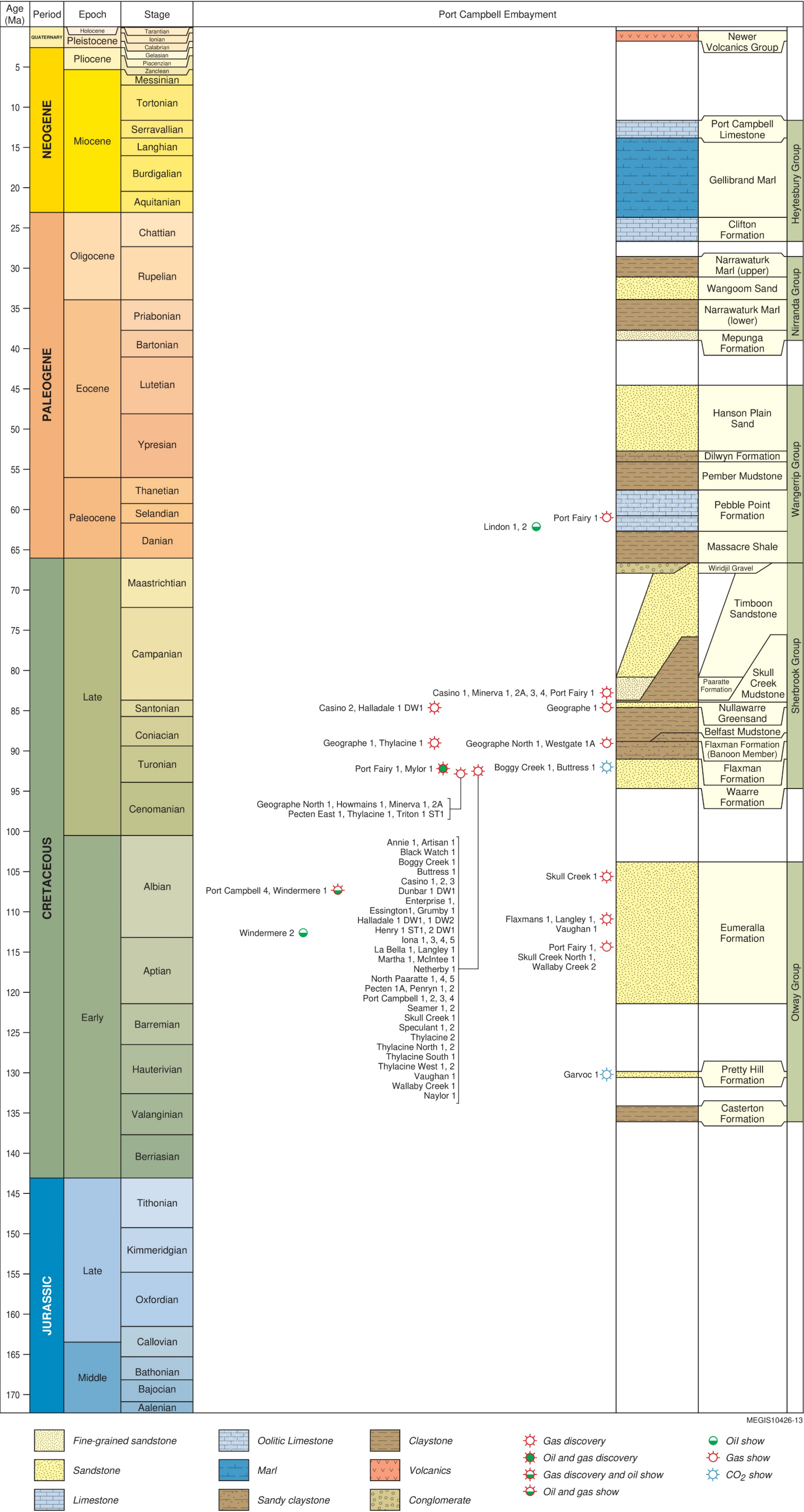


Figure 8 Stratigraphic chart for the Port Campbell Embayment and Shipwreck Trough showing well intersections of hydrocarbons (after Kelman et al, 2015; Geologic Time Scale after Gradstein et al, 2020).



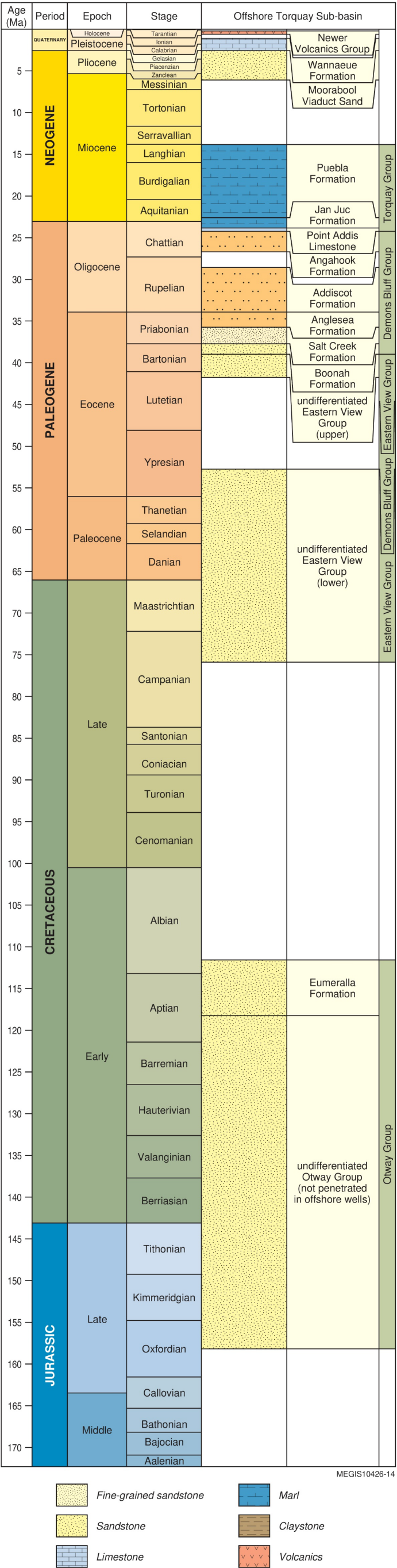


Figure 9 Stratigraphic chart for the offshore Torquay Sub-basin (after Kelman et al, 2015; Geologic Time Scale after Gradstein et al, 2020).



## Exploration history

Exploration in the region dates back as far as 1892, when coastal bitumen strandings led to the drilling of an exploration well in the South Australian part of the Otway Basin at Kingston. Early drilling was based on the theory that coorongite (subsequently found to be a surface algal deposit) originated from underground oil seepages. Commercial CO<sub>2</sub> was discovered in Caroline 1 in 1968, but it was not until 1987 that the first commercial gas discovery was made at Katnook. This was followed by the discovery of the Ladbroke Grove Field in 1989. In 2007, the appraisal of the Jacaranda Ridge Field significantly upgraded the northern part of the Penola Trough as a wet gas–condensate play. The lack of early success may be attributed to poor quality seismic data prior to the early 1980s, and a poor understanding of structural and stratigraphic relationships in the Robe and Penola troughs. Good quality modern seismic coverage now exists over the offshore and most of the onshore parts of the basin and stratigraphic relationships are better understood.

The first wells in the Victorian part of the Otway Basin were drilled in the 1920s to 1940s in the Anglesea and Torquay areas (Sprigg, 1986). These wells were relatively shallow (<500 m) and only penetrated Cenozoic sediments. In 1959, Port Campbell 1 was drilled into Upper Cretaceous sediments and intersected the first hydrocarbon column in the basin. Drilled by the Frome-Broken Hill consortium, it flowed at a rate of 4.2 MMcf/d (118 931 m<sup>3</sup>/d) from Waarre Formation sandstones.

In 1966, Esso and Shell farmed into the Otway Basin and, with Frome-Broken Hill, drilled 22 wells in both Victoria and South Australia. Hoping to find an analogue for the Gippsland Basin, their efforts were largely unrewarded as only minor gas shows were initially recorded in Pecten 1A—the first well drilled on the Mussel Platform in the eastern part of the Otway Basin. The major companies had abandoned the Otway Basin by 1976, discouraged by the lack of commercial oil or gas discoveries.

After a period of limited drilling and seismic acquisition in the region, Beach Petroleum discovered gas in Waarre Formation sandstones in North Paaratte 1 (1979), located only 3 km northeast of Port Campbell 1. Encouraged by this gas discovery onshore, offshore release areas were offered and petroleum exploration permits were awarded to Esso, Phillips and Ultramar, though no new discoveries were made. In contrast, Beach Petroleum made additional small onshore gas discoveries within the Upper Cretaceous Waarre Formation in 1981 at Grumby 1 and Wallaby Creek 1.

In 1987, gas fields in the Port Campbell area went into production, supplying the regional centres of Portland and Warrnambool. In the early 1990s, BHP Petroleum Pty Ltd (BHP) discovered gas in two wells drilled offshore on the Mussel Platform on the flanks of the Shipwreck Trough—Minerva 1 (1993) and La Bella 1 (1993)—as well as drilling two dry holes. After drilling an additional three wells that only encountered minor gas shows, BHP relinquished its exploration permits in 1997, and obtained retention leases over the Minerva and La Bella fields.

Only three wells have been drilled in the deep-water Otway Basin: Morum 1 (Figure 7) was drilled in the Morum Sub-basin in 1975; and the Nelson Sub-basin was tested, by Amrit 1 in 2004 and by Somerset 1 in 2009; all wells were dry. The oldest unit penetrated in the deep-water Otway Basin is the Turonian Waarre Formation, which was reached in Morum 1 (Esso Australia, 1975). All of these wells are located on the edge of the continental shelf. The continental slope and deep-water areas remain relatively unexplored.

Similarly, the Torquay Sub-basin has seen only moderate levels of exploration activity, and only three wells have been drilled in the offshore parts of the sub-basin (Figure 1). The best quality seismic data is available over the Snail Terrace. Exploration in the sub-basin commenced in the 1960s, when Shell drilled the Nerita 1 well (Shell Development, 1967). In the early 1970s, Hematite acquired seismic data and drilled the Snail 1 well (Hodgson and Mellins, 1973). The Bureau of Mineral Resources (BMR; now Geoscience Australia) also acquired several regional seismic lines in 1982. During the late 1980s to early 1990s, Shell undertook an exploration campaign in the basin that included the acquisition of gravity, magnetic and seismic data, and culminated in the drilling of Wild Dog 1 (Trupp et al, 1993). Permit VIC/P62 covering much of the Torquay Sub-basin was granted to Trident Energy in 2005. In 2011, Loysz Energy farmed-in to the permit and in 2013, acquired a 3D seismic survey to the east of Wild Dog 1. The joint venture partners have identified numerous leads that include an untested structural play in the Lower Cretaceous Pretty Hill Formation (Rogers, 2013). The permit was renewed in 2014 and full ownership was transferred to Loysz Energy in 2016. However, after conducting a series of feasibility studies, Loysz Energy has decided to relinquish the permit (Loysz Energy, 2017).

There was a strong resurgence in exploration activity in the Otway Basin from 1999 to 2005, which was driven by a combination of factors, including changes in the gas market and technological advances. A major exploration program by a Woodside Energy Ltd joint venture, utilising state-of-the-art 3D seismic technology, resulted in the large (approximately 1.3 Tcf [36.8 Gm<sup>3</sup>] GIP combined) Geographe and Thylacine gas discoveries. In the onshore, a Santos Limited joint venture exploration program, again using state-of-the-art 3D seismic acquisition technology, resulted in the discovery of three new gas fields. In 2002, another commercial offshore gas discovery was made by Strike Oil with the Casino 1 well, drilled by Santos Limited approximately 20 km southwest of the Minerva field on the western flank of the Shipwreck Trough. The Casino gas field was estimated to hold proven and probable (2P) reserves of 285 PJ (280 Bcf; AWE, 2004)—the field was brought into production in 2006. In 2004 and 2005, Santos Limited made an offshore gas discovery during the drilling of Martha 1 and Henry 1. Also in 2005, Woodside discovered the Halladale and Blackwatch gas fields about 4 km offshore in the Shipwreck Trough, with Origin Energy subsequently acquiring Woodside's interest in these fields as part of their development strategy. Subsequent drilling was largely unsuccessful; the Netherby 1 and Pecten East 1 wells drilled in 2008 by Santos encountered gas shows, while Thistle 1 (Origin Energy) to the north of the Thylacine/Geographe gas fields was classified as a dry well. Onshore, three exploration wells were drilled in South Australia in 2013–2014—one targeting a conventional petroleum play (Sawpit 2), and two targeting unconventional plays (Jolly 1 and Bungaloo 1).

The next offshore discovery was made in 2014 when Origin Energy drilled the Speculant 1 exploration well in the Victorian part of the inner Otway Basin. This resulted in a gas discovery which was appraised by Speculant 2 in 2015 (Origin Energy Limited, 2014, 2015). Origin Energy also appraised the Halladale field with Halladale 2 ST1 in 2014 (Origin Energy Limited, 2015). Around this time several offshore seismic surveys were acquired, including Astrolabe 3D (Origin Energy) and La Bella 3D (WHL Energy) in 2013, and Enterprise 3D (Origin Energy) and Flanagan 3D (3D Oil) in 2014.

In 2017, a new entrant to the Otway Basin, Adelaide-based Cooper Energy (now Amplitude Energy), was awarded operatorship of VIC/P44 with a 50% title interest, the other 50% being shared between Peedamullah Petroleum Pty Ltd and Mitsui E&P Australia Pty Ltd. In September 2019, Cooper Energy announced the discovery of a new gas accumulation at Annie 1. The well successfully tested the Waarre Formation and intersected a gross gas column of 70 m (net pay of 62 m) within the Waarre C reservoir section (Cooper Energy, 2019). Amplitude Energy are planning to drill the Annie-2 development well in 2026, with tie-in of the well and future production, indicated for 2028 (subject to approvals and licencing).

Also discovered in 2019 is the Dombey gas field located in the Penola Trough onshore South Australia. Dombey 1DW1 well encountered a 44.5 m gross gas column (25 m estimated net pay) in the Pretty Hill Formation (Cooper Energy, 2020). Beach Energy subsequently acquired the Dombey 3D seismic survey over the field and surrounding prospects and is assessing opportunities to supply gas to the Katnook Gas Plant (Beach Energy, 2023).

In December 2019, 3D Oil announced the successful farm-out of 75% of its interest in T/49P to ConocoPhillips. Under the arrangement, the Sequoia 3D marine seismic survey was acquired in 2021, over T49/P located in the eastern-most Inner Otway Basin. A number of prospects have been identified and a drilling campaign in the Otway began in 2025 and includes prospects in this block. In late 2020, Beach Energy drilled Enterprise 1 from onshore and discovered the Enterprise gas field in the nearshore basin (VIC/P42(V)), intersecting a 146 m of gas column with net pay of 115 m in the upper Waarre Formation. Beach Energy had further success with exploration well Artisan 1, drilled in early 2021 in license VIC/P43. The well intersected 69.5 m of gas (gross, 62.9 m net pay) in the upper Waarre Formation and a further 20.9 m of gas (gross, 4.6 m net pay) in the Flaxman Formation (Beach Energy, 2021). The field is planned to supply the Otway Gas Plant by tie-in to existing pipelines, with completion of the discovery indicated in 2026 as part of a broader drilling program (Beach Energy, 2025).



In September 2025, Beach Energy drilled Hercules 1 in VIC/P43. The well was considered a moderate to high-risk target and failed to intersect hydrocarbons in the Waarre C target (Beach Energy, 2025). Most recently, in November 2025, 3D Energi and ConocoPhillips announced the Essington 1 gas discovery in VIC/P79, recovering gas from the Waarre A and Waarre C reservoirs, intersecting gross gas bearing intervals of 62.6 m (58.5 m net pay) and 33.2 m (31.5 m net pay), respectively (3D Energi, 2025a, 2025b). A second exploration well, Charlemont 1, is scheduled to spud in the permit this year targeting the Charlemont B prospect (Waarre A reservoir) with a best estimate (2U) prospective resource of 88 Bcf (3D Energi, 2025c). These wells are underpinned by the 2023 reprocessing of the La Bella 3D and Investigator 3D (part) seismic surveys which delivered a significant improvement in image quality and aided in the mapping of leads and prospects in VIC/P79.

Further drilling is planned in the basin in 2026 including an initial three well (Elanora 1, Elenora 1 ST1 and Juliet 1) program by Amplitude Energy in VIC/L24, and the possibility of further wells as part of the 3D Energi–ConocoPhillips campaign.

Since 2020, there has been a significant increase in the density and quality seismic data coverage of the offshore Otway Basin. In early 2020, Schlumberger acquired the Otway Basin 2D Multiclient Marine Seismic Survey (Otway Basin 2DMC MSS; NOPSEMA, 2019) which includes >7,000 line kilometres of 2D across the deep-water part of the basin. The new data improve imaging of the sedimentary section to 12 seconds twt, enabling a reassessment of the basin's prospectivity. The processed data, including the new acquisition and reprocessed legacy data (18,524 line km), became open file in 2021 and is available via NOPIMS. This survey informed a major regional petroleum geological study of the offshore Otway Basin, carried out by Geoscience Australia between 2020 and 2024. The study included an assessment of the distribution of petroleum systems elements in the Early and Late Cretaceous sequences. Of special interest is the recognition of possible deltaic environments in the deep-water area, which might be an analogue to the Late Cretaceous section in the Bight Basin. Publications and related data sets delivered by this study are available via the [Deepwater Otway Basin Project webpage](#), where a link to an open file Petroleum Systems model of the deep-water Otway, that was released in 2021 and updated in 2023 (Schenk et al., 2021, 2023).

Onshore, the Geological Survey of Victoria (GSV) and the Geological Survey of South Australia (GSSA) have been conducting studies of the Otway Basin's geology and prospectivity. Under the [Victorian Gas Program](#) the GSV has been studying the basin's petroleum systems components. While the primary focus has been onshore, much of the research—including petroleum systems modelling (Van Aarssen, 2020)—has also enhanced our understanding of the offshore Inner Otway Basin. Meanwhile, the GSSA has undertaken integrated geological studies, petroleum systems modelling and play mapping of the basin (Edwards et al., 2024; Strong and Cubitt, 2025, and references therein). Both states released acreage for exploration in 2025 (Resources Victoria, 2025; SA-DEM, 2025)

A map showing the distribution of petroleum exploration wells, gas fields and offshore seismic data is provided in Figure 11.

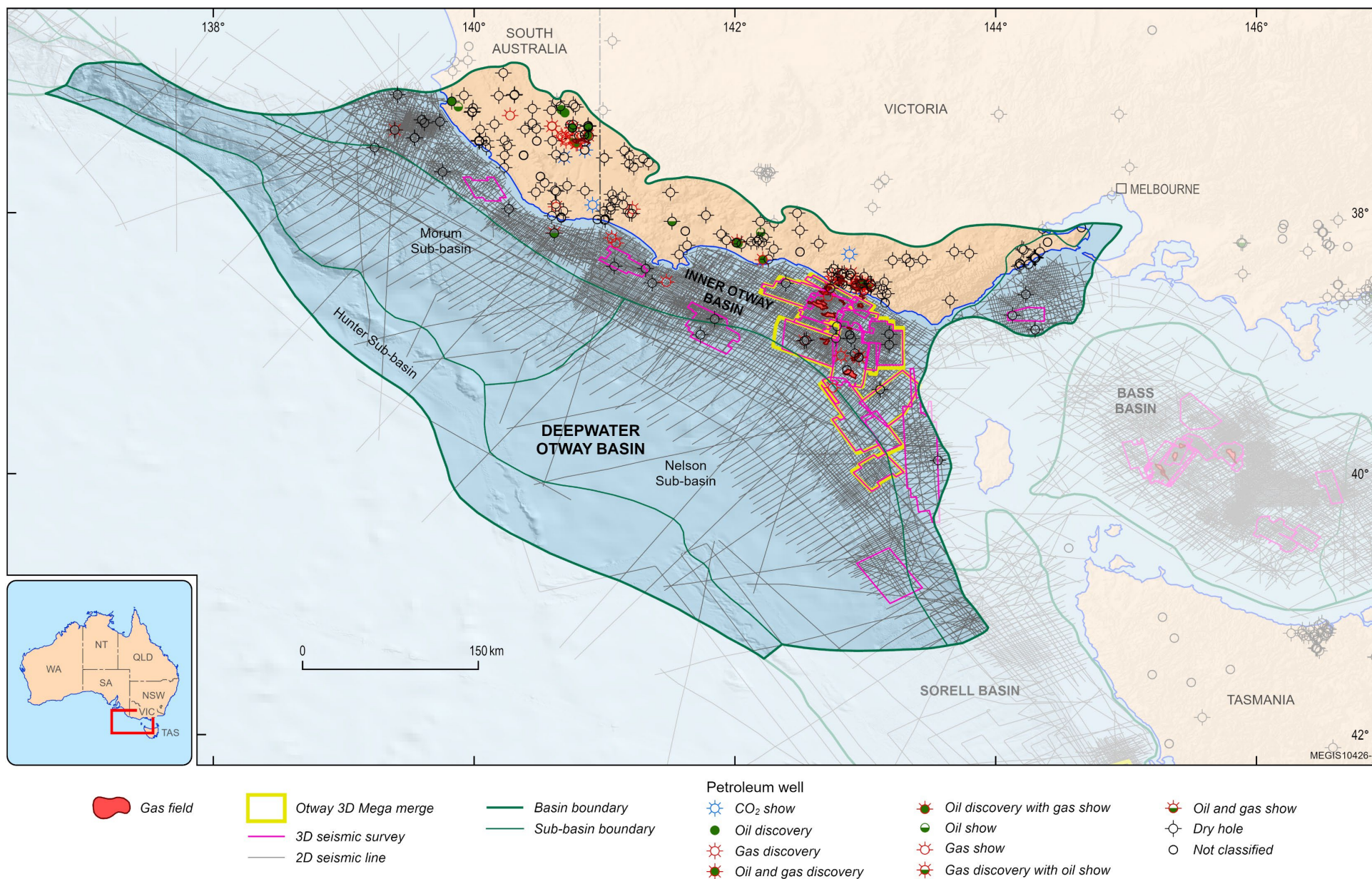


Figure 11 Distribution of petroleum exploration wells, gas fields and offshore seismic data in the Otway Basin.

## Production and development

Production from offshore Otway Basin commenced in 2005 with production from the Minerva gas field, via two subsea wells drilled in shallow waters tied back to the onshore Minerva gas plant. The Minerva field produced more than 2.33 MMboe of petroleum and ceased production in 2019 (EnergyQuest, 2020). The Casino Gas project, now operated by Amplitude Energy, went into production in 2006 with an estimated recoverable reserve of 280 Bcf (7.9 Gm<sup>3</sup>). The success of the Casino Gas project facilitated development of the Henry, Martha and Pecten discoveries, with production via the existing Casino infrastructure and the Iona to the onshore Iona production facility. In 2021, Cooper Energy and Mitsui acquired the Minerva gas plant: the plant was upgraded and renamed Athena and brought back online to process production from the Casino Gas Project (Casino, Henry and Netherby fields; EnergyQuest, 2022). Total gas production from the Athena Gas Plant (Casino-Henry-Netherby) in 2024-25 was 6.8 PJ, down 10% from the previous year due to natural decline (Amplitude Energy, 2025).

The Beach Energy operated Otway Gas Plant has a 205 TJ/day capacity, delivering natural gas to the SE-Australian gas market. The Otway Gas Plant processes gas from the Otway Gas Project that includes the Thylacine, Geographe, Halladale, Speculant, Black Watch and Enterprise fields (Figure 1, Figure 2). The Otway Gas Project commenced production from the Thylacine field in 2007 with the Geographe field, 15 km north of Thylacine added in 2013 (Origin Energy Limited, 2013). The project was further expanded in 2018 when Beach Energy acquired the Halladale/Speculant gas project and connected the Halladale and Speculant sites to the Otway Gas Plant (Beach Energy, 2019). In 2020, the Black Watch 1 well was successfully drilled and tied in (Beach Energy, 2020). In 2024, the Enterprise and Thylacine West gas wells were developed and connected, increasing production. Total production from the Otway Gas Project in 2024-25 included 56 PJ of gas, 92 kt of LPG and 910 kbbl of condensate (Beach Energy, 2025).

Australia's southeastern gas market is currently undergoing major supply challenges which are partly driven by LNG exports to Asian markets from Gladstone, Queensland, but also by an existing moratorium on shale gas development in NSW and a total ban on oil and gas exploration and production in onshore Victoria. In June 2020, the Victorian Parliament passed the *Petroleum Legislation Amendment Act 2020*, which strengthened community safeguards in the regulatory framework and provided for the implementation of an orderly restart of the onshore conventional gas industry from 1 July 2021 (Victorian State Government, 2025). The permanent ban on unconventional gas remains, which prevents hydraulic fracturing or exploring and mining of coal-seam gas. In this context, the newly released acreage in the offshore Otway Basin provide excellent opportunities to make additional gas discoveries that can be monetised rapidly by taking advantage of the existing infrastructure (Figure 2).

In addition to exploration for and development of additional gas resources, gas storage options and LNG import terminals are being considered to address Australia's southeastern gas market supply challenges. Currently, the Iona Underground Gas Storage facility serves as a key seasonal, fast-response gas storage and balancing asset for Victoria and southeastern Australia, storing produced gas to buffer against fluctuating demand. LNG import terminals being considered include the proposed Viva Energy Gas Terminal and Vopak Victoria Energy Terminal, near Geelong, Victoria. The Viva Energy terminal with capacity (peak) of up to 750 TJ/day received environmental approval in May 2025 and could commence construction in 2026 (subject to a final investment decision; Viva Energy, 2025). The Vopak Victoria Energy Terminal is seeking environmental approvals with first delivery of gas targeted later this decade (Vopak, 2025).

At the end of 2023 a total of 2,083 PJ (1.85 Tcf) of gas had been produced from the Otway and Bass basins (Geoscience Australia, 2025). Remaining gas reserves (2P) are estimated at 623 PJ (0.55 Tcf) and contingent resources (2C) at 873 PJ (0.78 Tcf). A map showing the current main operators, active exploration permits, retention leases and production licences is provided in Figure 12.



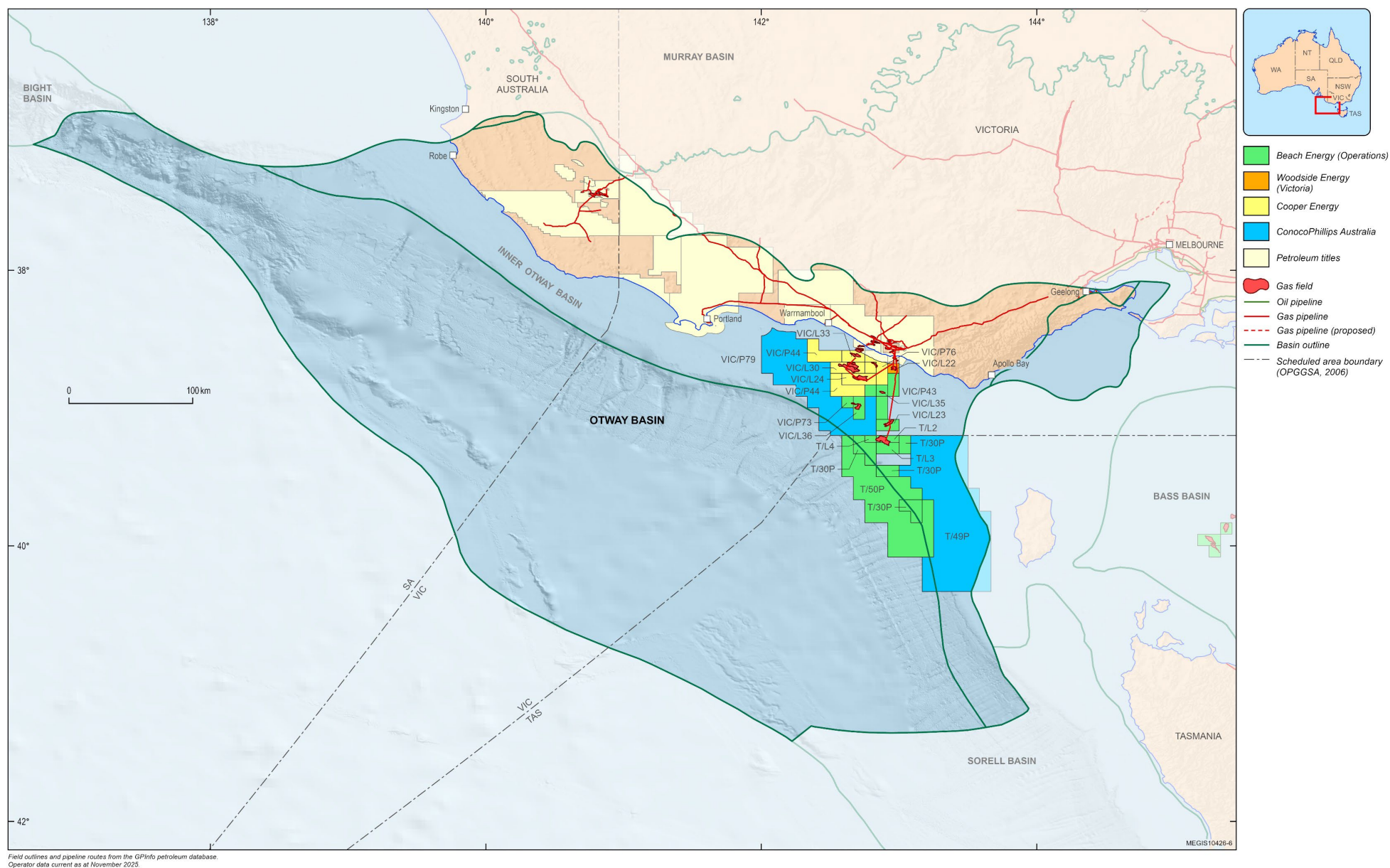


Figure 12 Map showing the current main operators, active exploration permits, retention leases and production licences.

## Regional petroleum systems

Hydrocarbon discoveries on the Australian southern margin are assigned to the Austral Petroleum Supersystem (Bradshaw, 1993; Edwards et al, 1999; Summons et al, 2002), in which three subsystems are recognised:

- Austral 1: Upper Jurassic to lowest Cretaceous fluvial-lacustrine shales (Crayfish Supersequence);
- Austral 2: Lower Cretaceous fluvial and coaly facies (Crayfish and Eumeralla supersequences); and
- Austral 3: Upper Cretaceous to lowest Cenozoic fluvial-deltaic facies (Shipwreck and Sherbrook supersequences).

O'Brien et al (2009) mapped the peak hydrocarbon generation fairways for the three petroleum systems in the Otway Basin (Figure 13) and concluded that the principal control on the distribution of significant hydrocarbon accumulations in the basin is proximity to actively generating source kitchens. This is related to poor fault seal in the basin, so that development of hydrocarbon accumulations is reliant on the charge rate exceeding the leakage rate, complicated by relatively complex and tortuous migration pathways.

While many discoveries have been made in the inboard basin, only six petroleum exploration wells have been drilled in the remainder of the offshore parts of the basin—three in the deep-water sub-basins (Morum 1, Amrit 1 and Somerset 1) and three in the offshore Torquay Sub-basin (Nerita 1, Snail 1 and Wild Dog 1). All of these wells were plugged and abandoned as dry holes. Austral 2 source rocks are modelled as being overmature across much of the Late Cretaceous depocentre in the deep-water parts of the basin (O'Brien et al, 2009). However, the presence of a thick, dominantly marine Upper Cretaceous succession, and geochemical indications suggesting the influence of Austral 3-sourced hydrocarbons in outboard wells (O'Brien et al, 2009), provide some support for the concept that active petroleum systems are present in the deep-water parts of the basin.

## Source Rocks

Three Petroleum Systems are characterised in the Otway Basin. The source rocks of the Austral 1 Petroleum System consist of non-marine, Upper Jurassic to Lower Cretaceous fluvial-lacustrine shales deposited in half graben (Casterton Formation and Crayfish Subgroup) in the Penola and Robe troughs. Edwards et al (1999) grouped liquid hydrocarbons sourced by Austral 1 source rocks into oil families, based on isotopic and biomarker signatures, and interpreted the depositional environments of the source rocks.

With the exception of the Penola and Robe troughs, the vast majority of hydrocarbon discoveries in the Otway Basin belong to the Austral 2 Petroleum System, which consists of Lower Cretaceous (Albian–Aptian) source rocks charging the overlying basal Upper Cretaceous Waarre siliciclastic reservoir unit (Edwards et al, 1999; Boreham et al, 2004; O'Brien et al., 2009). These include the onshore fields in the Port Campbell Embayment and all offshore gas fields in the greater Shipwreck Trough area (Mehin and Link, 1994; Foster and Hodgson, 1995; Luxton et al, 1995; Boreham et al, 2004). Source intervals comprise coals and carbonaceous shales within two coal measure sequences in the Eumeralla Formation, one of Aptian age near the base of the unit and the other of early Albian age.

The Sherbrook and basal Wangerrip group potential source rocks of the Austral 3 Petroleum System have not been definitively linked to any hydrocarbons in the Otway Basin (Totterdell et al, 2014), but most of the wells drilled in the basin have been located either on inner shelfal areas or onshore where the Sherbrook Group has not reached sufficient thermal maturity for significant hydrocarbon generation to have occurred. O'Brien et al (2009) reported that gas discoveries in wells drilled on the outer shelf adjacent to the Tartwaup–Mussel Fault Zone (La Bella, Geographe and Thylacine) are significantly wetter than discoveries on the inner shelf, where the Austral 2 system provides the sole hydrocarbon charge. Migration of Austral 3-sourced wet gas from the deep-water basin up the Tartwaup–Mussel Fault Zone was suggested by O'Brien et al (2009) as a possible mechanism to explain this difference. The only oil thought to be attributed to the Austral 3 Petroleum System is derived from the Pebble Point Formation in Wilson 1, located in the Victorian onshore part of the basin (Lavin, 1998). However, the Wilson 1 oil stain has since been reinterpreted as a drilling contaminant rather than in-place or migrated hydrocarbons (Boreham et al, 2004; O'Brien et al, 2009; Goldie Divko, 2015).

The Turonian Waarre Formation contains both marginal marine and coastal plain sediments that can be regarded as viable source rocks, provided they are sufficiently deeply buried. Farther basinward, these units are likely to comprise prodelta and open marine facies, which may have greater potential for containing high-quality source rocks, especially as studies by O'Brien et al (2009) suggest that the Turonian section in the deeper offshore would lie within the hydrocarbon maturity window. The Cenomanian–Turonian and Coniacian–Santonian were times of global anoxia and source rock accumulation (Oceanic Anoxic Events [OAE] II and III; Arthur et al, 1990; Jenkyns, 2010), which further enhances the potential for the presence of good quality Austral 3 source rocks in distal marine facies in the deep-water basin (Gallagher et al, 2005; O'Brien et al, 2009). The dredging of Cenomanian–Turonian potential source rocks with excellent liquids potential from the Ceduna Sub-basin of the Bight Basin further to the west (Totterdell et al, 2008), provides support for this hypothesis. In addition, O'Brien et al (2009) identified organic enrichment in Turonian rocks in wells located along the outer margin of the basin, near the Tartwaup–Mussel Fault Zone. Those results support the interpretation that the basal parts of the Sherbrook Group became increasingly rich in organic matter basinward, as marine conditions became more prevalent in the Late Cretaceous.

The nature of potential source rocks basinward of the Tartwaup–Mussel Fault Zone in the Otway Basin is not well understood; however interpretation of seismic data indicates that the depositional sequences that contain Austral 2 and Austral 3 source rocks elsewhere in the basin (Boreham et al, 2004), are also likely to be present in the deep-water Otway Basin (Totterdell et al, 2014; Nicholson et al, 2022; Nicholson et al, 2024; Figure 14).

Given the thickness of the upper Cretaceous succession, potential Austral 2 source rocks (coaly sediments of the Eumeralla Supersequence) are modelled to be overmature across much of the deep-water basin (Reid et al, 2001; O'Brien et al, 2009). Consequently, exploration success in the deep-water basin is likely to be dependent on the presence of Turonian or younger (Austral 3) source rocks in the Shipwreck and Sherbrook supersequences (O'Brien et al, 2009). More recent modelling of these postulated Turonian–Santonian source rocks is shown in Schenk et al. (2023) and Schenk et al. (2021), and provides an overview of hydrocarbon generation and entrapment potential that speak to prospectivity in the untested Morum Sub-basin.

Additionally the innermost part of the Morum Sub-basin, where the Lower Cretaceous succession is not as deeply buried and is modelled to have Austral 2 source potential (Duddy et al, 2003). In this region, the basinward-thickening Upper Cretaceous succession is interpreted to overlie potential Aptian–Albian source rocks that are postulated to include, not only the coaly source rocks of the Eumeralla Supersequence, but also organic-rich oil-prone marine sediments (Boult et al, 2006).

In the Torquay Sub-basin, the best potential source rocks are the Upper Jurassic to lowest Cretaceous Casterton Formation and Crayfish Supersequence (Austral 1; Edwards et al, 1999; Boreham et al, 2004) and the Lower Cretaceous Crayfish and Eumeralla supersequences (Austral 2; Edwards et al, 1999; Boreham et al, 2004). Although the Eastern View Formation provides the source for hydrocarbons in the Bass Basin (Blevin et al, 2005; Boreham et al, 2003), in the Torquay Sub-basin, the unit is thermally immature and not capable of generating hydrocarbons.



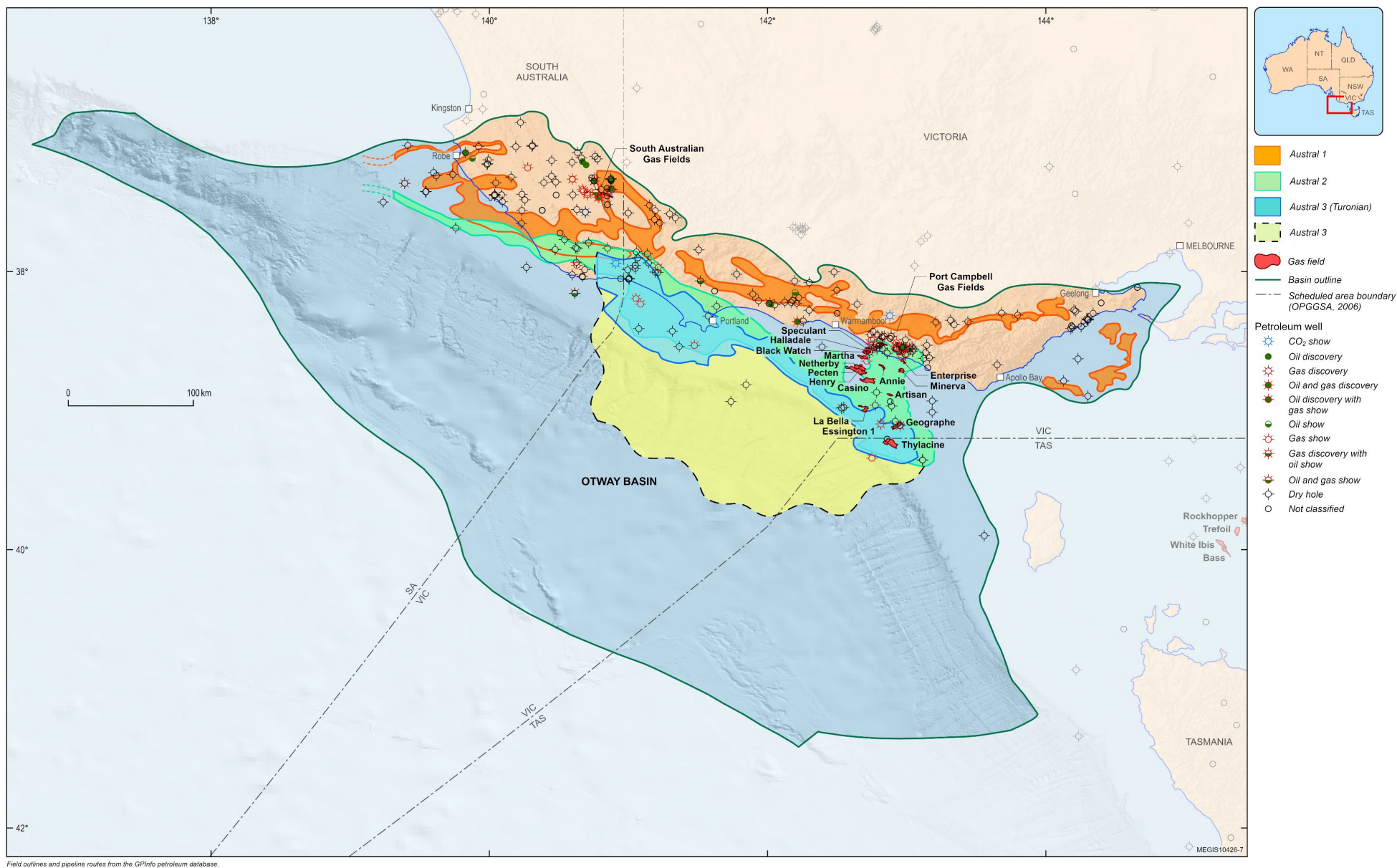


Figure 13 Peak prospectivity zones for the Austral 1, 2 and 3 petroleum systems in the Otway Basin (modified from O'Brien et al, 2009).

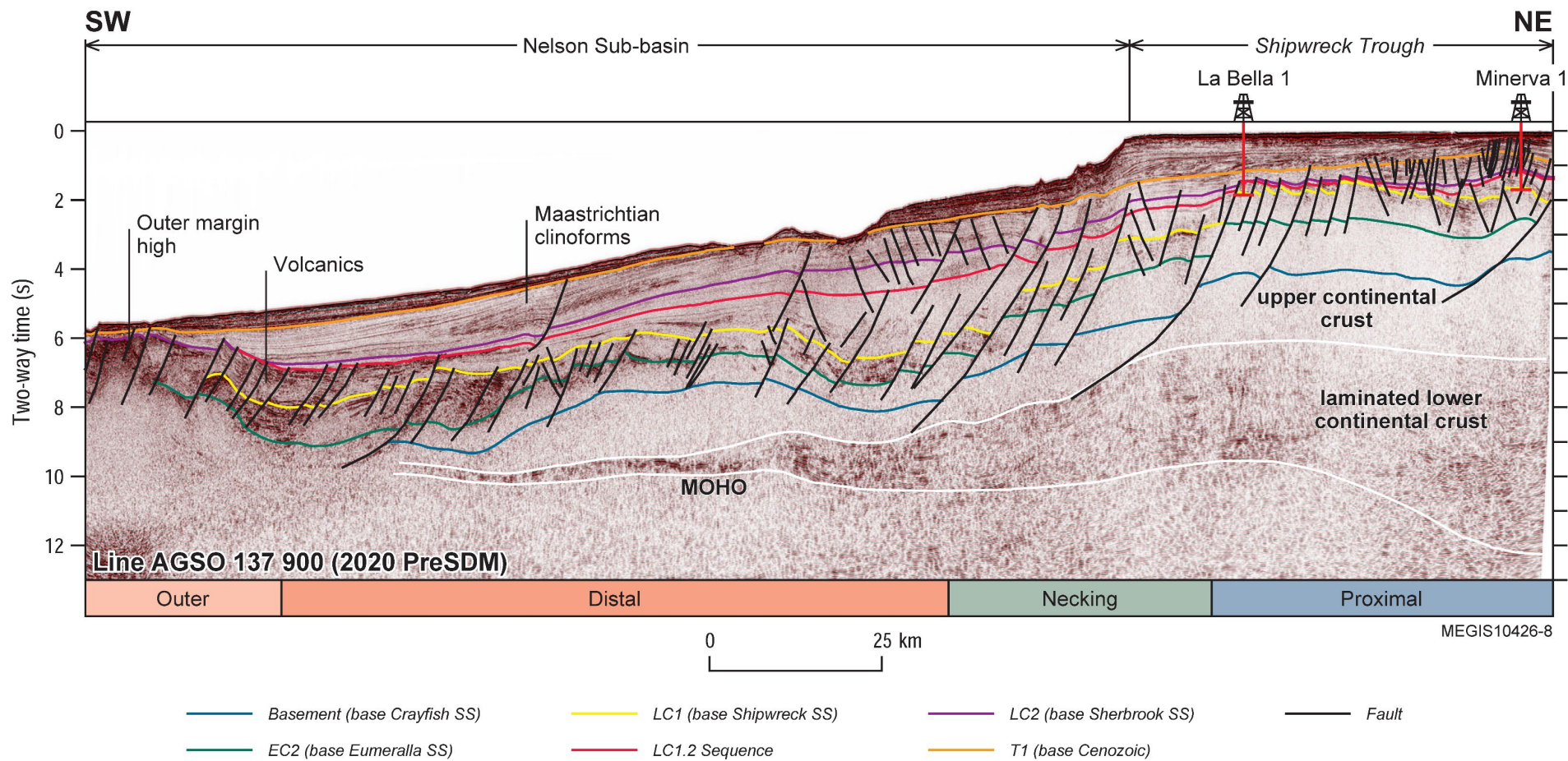


Figure 14 Seismic stratigraphy and structure interpretation of the Cretaceous and deep crustal reflectors from the Shipwreck Trough to the Nelson Sub-basin, offshore Otway Basin. Proximal, Necking, Distal and Outer structural domains illustrate progressive crustal thinning outboard, corresponding with thickening of Cretaceous sediments (after Nicholson et al., 2024).

## Petroleum Systems Elements

Sources	<ul style="list-style-type: none"> <li>Upper Cretaceous–lowest Paleogene fluvial-deltaic Sherbrook Group (Turonian Waarre Formation and Coniacian–Santonian Belfast Mudstone) and marginal marine basal Wangerrip Group (Austral 3 unproven)</li> <li>Aptian–Albian lower coastal plain and peat swamp Eumeralla Formation shale and coal (Austral 2)</li> <li>Upper Jurassic to Lower Cretaceous fluvial-lacustrine shales of the Casterton Formation and Crayfish Subgroup (Austral 1)</li> </ul>
Reservoirs	<ul style="list-style-type: none"> <li>Paleocene Pebble Point Formation</li> <li>Upper Cretaceous Paaratte Formation and Timboon Sandstone</li> <li>Upper Cretaceous Thylacine Member, Belfast Mudstone</li> <li>Upper Cretaceous Waarre and Flaxman formations</li> <li>Lower Cretaceous Eumeralla Formation</li> <li>Lower Cretaceous Pretty Hill Formation</li> </ul>
Seals	<p><i>Regional seals</i></p> <ul style="list-style-type: none"> <li>Upper Cretaceous Belfast Mudstone</li> <li>Lower Cretaceous Laira Formation</li> </ul> <p><i>Intraformational seals</i></p> <ul style="list-style-type: none"> <li>Eocene Mepunga Formation</li> <li>Paleocene–Eocene Pember Mudstone and Dilwyn Formation</li> <li>Uppermost Cretaceous/Paleocene Massacre Shale</li> <li>Intraformational mudstones within Upper Cretaceous Paaratte Formation and Timboon Sandstone</li> <li>Upper Cretaceous Flaxman Formation</li> <li>Lower Cretaceous Eumeralla Formation</li> </ul>
Traps	<ul style="list-style-type: none"> <li>Faulted anticlines, tilted fault blocks with cross-fault seal</li> </ul>

## Reservoirs and seals

The Pretty Hill Formation (part of the Crayfish Subgroup) is the major play fairway in the South Australian part of the Otway Basin and is the producing unit in the Katnook, Ladbroke Grove, Haselgrove and Haselgrove South gas fields. In Victoria, the Pretty Hill Formation has good reservoir characteristics at shallow to moderate depths of burial (1000–2300 m), with measured porosity of 13.2–32.0% (average 20.7%), and permeability of 390 mD (Mehin and Constantine, 1999). The reservoir potential of the unit at depths greater than approximately 2300 m is uncertain due to a lack of well penetrations. However, reservoir data from gas fields in the Penola Trough, onshore South Australia, suggest that porosity and permeability within the Pretty Hill Formation may be quite high, given that the gas zones in these fields (between 2500 m and 2800 m) have effective average core porosity of 10–18% and permeability of 0.6–549 mD (Parker, 1992).

Vertical and cross-fault sealing of the Penola Trough gas reservoirs in South Australia is provided by the Laira Formation (Parker, 1992; Lovibond et al, 1995). In Victoria, by contrast, the sealing unit is likely to be the Eumeralla Formation, since the Laira Formation is absent, except in a few wells located near the Victorian–South Australian border (Mehin and Constantine, 1999).

The Turonian Waarre Formation (Figure 5) is the major regional reservoir unit in the Victorian part of the Otway Basin. Producing gas has been encountered in sixteen onshore fields in the Port Campbell area. In the offshore Shipwreck Trough, the Waarre Formation hosts gas accumulations at Minerva, La Bella, Geographe and Thylacine. The Flaxman Formation and a sandy facies (“Thylacine Sandstone Member”; Cliff et al, 2004) at the base of the Belfast Mudstone are also significant exploration targets. In the Shipwreck Trough, marine sandstones in the basal part of the Flaxman Formation contain gas and constitute part of the total gas reservoir section for the Minerva and La Bella fields (Geary and Reid, 1998).

In the Inner Otway Basin, including at the Port Campbell and Shipwreck Trough gas fields, the most widely distributed sealing facies is the marine claystone Belfast Mudstone, which provides a reliable regional top seal for reservoirs within the Waarre and Flaxman formations. In addition, shales within the Flaxman Formation may act as intraformational seals. Both units are regionally developed and are thickest in the offshore part of the basin.

The Campanian–Maastrichtian Paaratte Formation has been intersected by many wells in South Australia and is known to contain good quality reservoir intervals. The Paaratte Formation and Timboon Sandstone are also characterised by intraformational mudstones that have good sealing capacity, and the Paleocene Pebble Point Formation is sealed by the seaward-thickening Pember Mudstone. Potential sealing units within the Wangerrip Group include the basal Massacre Shale, basal mudstone units of the Dilwyn Formation, and mudstones in the Mepunga Formation.

Although the Sherbrook Group remains untested in terms of mature source rocks, all other petroleum systems elements appear to be present. However, the extent to which these reservoir facies are developed in the deep-water Otway Basin is not known. In this part of the basin, the Upper Cretaceous succession is predicted to contain fine-grained prodelta and marine facies (Krassay et al, 2004), which could provide good quality seals. Only ongoing exploration, especially in the deeper parts of the basin, will shed light on the viability of this petroleum system. Two wells drilled in the vicinity of the shelf break (Amrit 1 and Hill 1) targeted the Paaratte Formation and verified the presence of good quality reservoir facies. An overlying seal facies in mudstones coeval with the more proximal Timboon Sandstone was also found in Amrit 1 (Subramanian, 2004, 2005). Petrophysical analyses of samples from Amrit 1 indicated 42.5 m of net sand with an average porosity of 16.2% was present (Subramanian, 2005).

In the Torquay Sub-basin, the reservoir properties of the Eocene Boonah Formation and the Upper Cretaceous–Eocene Eastern View Formation were found to be fair to excellent, while two deeper Cretaceous units (the Pretty Hill Formation in the Crayfish Supersequence and the Eumeralla Supersequence) is also predicted to have reservoir potential (Bernecker et al, 2004). All these potential reservoir units are likely to have corresponding seals. The Boonah Formation is sealed by the regionally extensive Anglesea Formation, the Pretty Hill Formation is sealed by the Eumeralla Formation and intra-formational seals are likely within the Eastern View Formation and Eumeralla Formation.

A series of gross depositional environment (GDE) maps for the Sherbrook Group were generated by Abbott et al (2023; 2024) and Cubitt et al (2023) based environmental interpretation of core logs, wireline logs, lithology, and seismic facies analysis (Figure 15). The maps show the distribution of Fluvial Plain (sandstone dominated), Delta-coastal Plain (sandstone and mudstone), and Shelf (mudstone dominated) regional gross depositional environments, and therefore, provide an indication of source, reservoir and seal rock distribution. For each interval, the maps show a large deltaic complex that prograded into the basin from the northwest. The shelf mudstone intervals together contribute to the regional seal for hydrocarbon accumulations in the Shipwreck Trough.



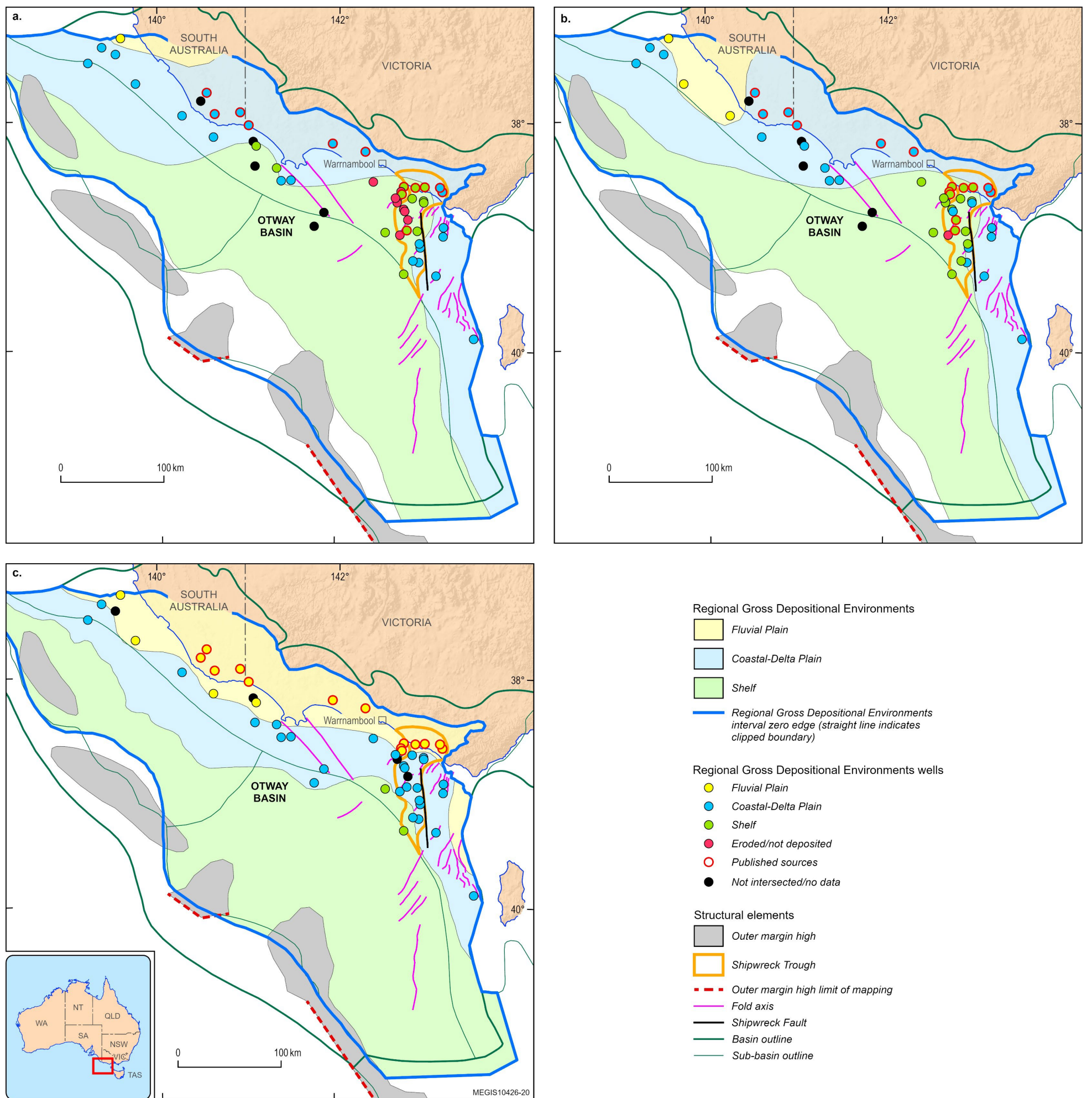


Figure 15 Sherbrook Group regional gross depositional environment maps for the (a) Shipwreck Supersequence (LC1.1 sequence) (b) Shipwreck Supersequence (LC1.2 sequence) and (c) Sherbrook Supersequence. See Abbott et al, 2024 for sequence stratigraphic framework chart.

## Timing of generation

Burial history modelling indicates the Eumeralla Formation has a two-stage hydrocarbon generation history consisting of an initial Early Cretaceous phase of hydrocarbon expulsion followed by a lesser Cenozoic expulsion phase (Duddy, 1994, 1997; Mehin and Link, 1997b). Early Cretaceous expulsion was associated with the initial rifting event, when the geothermal gradient was approximately 50–70°C/km (Mehin and Link, 1997a; Mitchell, 1997). This event would have resulted in significant hydrocarbon generation from the Casterton Formation, Crayfish Subgroup and basal Eumeralla Formation, peaking at the end of the Early Cretaceous.

During the Late Cretaceous, hydrocarbon expulsion from the Casterton Formation (Crayfish Subgroup) and base Eumeralla Formation ceased after the regional geothermal gradient dropped from 50–70°C/km to 30°C/km (Duddy, 1997; Mitchell, 1997). Further hydrocarbon generation did not recommence until the Eumeralla Formation experienced burial temperatures greater than those attained at the end of the Early Cretaceous. Duddy (1997), and Mehin and Link (1997b) believe this occurred in the Paleogene with peak generation occurring in areas where the Eumeralla Formation is overlain by about 2000 m of Upper Cretaceous sediments and 1000–2000 m of Paleogene sediments.

Significant sediment loading took place in the deep-water Otway Basin during the Late Cretaceous (Shipwreck and Sherbrook supersequences). O'Brien et al (2009) suggest that in most of the Nelson Sub-basin, both the Austral 2 and basal Austral 3 source rock intervals had undergone complete organic matter transformation, and had generated and expelled hydrocarbons by 82 Ma. Given the amount of Late Cretaceous structuring in the basin, particularly prior to breakup in the latest Maastrichtian, preservation of these early-generated hydrocarbons could be problematic. O'Brien et al (2009) also reported that in a narrow zone around the Tartwaup–Mussel Fault Zone, where the Upper Cretaceous succession is not as thick, much of the Sherbrook Group is currently at peak maturity, which enhances the petroleum prospectivity of this zone.

In the Morum Sub-basin, modelling by Duddy et al (2003) suggests that generation from Austral 2 (Eumeralla) source rocks ceased at about 45 Ma, and that migration, which commenced in the Late Cretaceous, continues to the present day.

In the Torquay Sub-basin, Trupp et al (1994) suggested that Casterton Formation source rocks would be marginally oil mature on the Snail Terrace, but overmature for oil and gas generation in the deepest parts of the sub-basin, having expelled all hydrocarbons by 90 Ma. The only traps available during the main phase of expulsion would be within the Crayfish section, which they considered to be below the reservoir floor. In addition, timing of generation (101 Ma) relative to the Cenomanian deformation event (95–90 Ma) would not appear to favour preservation of accumulations. Trupp et al (1994) also suggested that Eumeralla Formation source rocks are currently mature in the main depocentre. However, recent modelling by Holford et al (2010) suggests that maximum post-depositional temperatures for the Otway Group in Nerita 1 were reached in the Early Cretaceous. They reported that the combined effects of deeper burial (by an additional 1200 m) and elevated heat flow during the Early Cretaceous resulted in hydrocarbon generation from Lower Cretaceous source rocks prior to the 100–90 Ma uplift and erosion.

## Petroleum Systems Modelling 2021-2023

Schenk et al. (2021a, 2021b; 2023) conducted a petroleum systems modelling study of the offshore Otway basin, based on six geologically representative, dip-oriented, 2D seismic transects. The primary aim of the study was to increase understanding of the petroleum systems across the deep-water area. Model results confirmed that in the deep-water basin, Austral 1 and Austral 2 source rocks were overmature by the Late Cretaceous. Hydrocarbon generation therefore depended on the presence and burial history of Sherbrook Group (i.e. Austral 3 petroleum system) source rocks, and in the timing of hydrocarbon generation in relation to trap formation and seal effectiveness.

The models predict that hydrocarbon generation from Austral 3 source rocks in the deep-water basin almost ceased by the end of the Cretaceous. In general, greater post-Cretaceous hydrocarbon potential was found in the Nelson Sub-basin where source rocks are relatively shallow at the present day and less affected by Late Cretaceous erosion. Specific areas identified where generation from Upper Cretaceous source rocks occurred during the Cenozoic are in the far outboard areas of the study area where isolated Cenozoic depocentres exist, and in tilted fault blocks close to the modern shelf edge where they are positively influenced by late burial by the mid-Eocene to Miocene interval. In areas of the deep-water basin where the postulated source rocks are overmature prior to seal effectiveness, model results still predict hydrocarbon potential due to the modelled slow migration of hydrocarbons through mud-dominated intervals, charging potential traps later when seals are effective.

## Play types

Sandstones within the Sherbrook Group (Waarre and Flaxman formations) sealed by the Belfast Mudstone and charged by Austral 2 source rocks are the most successful exploration targets inboard of the Tartwaup–Mussel Fault Zone. All of the producing fields and a majority of the discoveries are from the Waarre reservoir. The principal structural traps involve closure associated with faulted anticlines and tilted fault blocks. Regional seal is provided by the Belfast Mudstone while the Flaxman Formation exhibits local sealing capability. The Eumeralla Formation is expected to be gas generative across most of the region. The potential for oil generation from lower Sherbrook Group source rocks is inferred to be the highest in the Nelson Sub-basin and Portland Trough. Recent petroleum geochemical studies suggest that in the offshore, mature Turonian source rocks may be capable of generating liquid hydrocarbons, if it can be demonstrated that these shales are marine in origin (O'Brien et al, 2009).

In the western Otway Basin, Turonian–Santonian slope fan sediments provide a valid exploration target in addition to the Waarre/Flaxman play. Rapid deepening and steepening of the shelf to the southwest of the Tartwaup Hinge Zone, combined with high eustatic sea levels, created a deep-water depositional environment over much of the Otway Basin. Post break-up uplift in the hinterland provided large volumes of clastic material that bypassed the relatively stable platform of the Tartwaup Hinge Zone to the northeast. Lower delta plain and marginal marine conditions suitable for the formation of oil-prone source rocks within the Waarre and Flaxman formations are most likely to be found in rapidly subsiding troughs, such as those located southwest of the Tartwaup Hinge Zone. Slope-fan deposits, overlying a thick, coal-bearing sequence of the Waarre Formation, have been identified on seismic data in the South Australian part of the basin.

Another regionally well-developed play type is associated with tilted fault blocks that contain Paaratte Formation sediments. These fault blocks rely on both intraformational and cross-fault seal for trap integrity. In proximal locations, trap seal is the main exploration risk associated with this play. In more distal areas, where the unit interfingers with the Belfast Mudstone, the risk of seal failure is reduced. Rollovers associated with faulted anticlines developed on the hanging wall of listric faults may provide independent four-way dip closures. The generally coarsening-upwards quartz sandstones display excellent reservoir characteristics. Although this play has yet to be validated by a hydrocarbon discovery, only one offshore well (Discovery Bay 1) has targeted this play. Downthrown fault blocks, with juxtaposition of Paaratte Formation reservoirs against shaly sequences from the same unit, or Belfast Formation mudstones, may also constitute valid traps. The potential for fault seal is expected to increase in a basinward direction.

While there is potential for plays charged by early-generated, Austral 2-sourced hydrocarbons in the inboard parts of the deep-water Otway Basin, preservation of such accumulations is considered problematic. O'Brien et al (2009) proposed that the best opportunities for preservation of early-generated hydrocarbons were in fault-independent anticlines with four-way dip closure, and in fault-dependent plays on faults with low dip and east–west strike, rather than northwest–southeast.

In the deep-water Otway Basin, rapid sediment loading in the Late Cretaceous resulted in Austral 2 source rocks undergoing complete organic matter transformation by 82 Ma (O'Brien et al, 2009). Therefore, plays in much of the deep-water Otway Basin are likely to be reliant on charge from unproven Austral 3 source rocks (Geary and Reid, 1998; Reid et al, 2001; O'Brien et al, 2009) charging Paaratte Formation equivalent sandstones with top and cross-fault seal provided by distal marine mudstones. The most promising exploration targets in the deep-water Otway Basin lie in faulted anticlines and tilted fault blocks immediately outboard of the Tartwaup–Mussel Fault Zone. Amrit 1 targeted an inboard intra-Paaratte play sourced from the Belfast Mudstone. While the well confirmed the presence of reservoir quality sands and overlying seal facies (Subramanian, 2005), significant occurrences of hydrocarbons were not encountered and the play remains unproven. Minor hydrocarbon indications in the upper part of the Paaratte Formation could be interpreted as providing some evidence for the presence of an active petroleum system, but raise doubt over the volumes of generated hydrocarbons (Subramanian, 2005).

In the Morum Sub-basin, Duddy et al (2003) suggested that migration from Eumeralla source rocks continues to the present day and therefore there is potential for accumulations in suitable trapped Upper Cretaceous reservoirs.

Play types within the Torquay Sub-basin consist of: Miocene anticlines, similar to those in the Gippsland Basin, with an Eocene reservoir seal. Throughout the exploration history of the offshore Otway Basin, poor fault-seal integrity has often been cited as the main reason for well failure (e.g. at Loch Ard 1 and Eric the Red 1). However, geochemical studies indicate the distribution of the present day peak generation window for the respective petroleum systems is the primary determinant of prospectivity within the basin (O'Brien et al, 2009). Maturity modelling suggests that the inner shelf, inboard of the Tartwaup-Mussel Fault Zone, lies well within the area of mature Eumeralla source rocks and carefully mapping of appropriate structures on 3D seismic will be required. In these inboard areas, it is also very important to understand lateral facies distribution that range from fully terrestrial lower coastal plain to open shelf depositional environments. Champion 1 and Nautilus A1 failed due to a lack of reservoir, and risk in the area is associated with recognising the extent of good quality reservoir facies that are kept intact either by fault-seal mechanisms or by the presence of intraformational and regional sealing lithologies. In the palaeo-nearshore zone, such facies changes occur abruptly and reservoir compartmentalisation is a common feature.

In the eastern part of the offshore Otway Basin, the Waarre/Flaxman play was tested by Whelk 1 and, although encountering good reservoir sandstones, failed to record any hydrocarbons because of an interpreted facies change in the Belfast Mudstone equivalent. As shown in Figure 16, the Cretaceous succession thickens considerably basinwards from the King Island High. Recent petroleum systems modelling indicates reservoir facies within the Upper Cretaceous Waarre Sandstone are likely to be in the gas window in that part of the basin. Structural configuration suggests that fault-blocks represent feasible exploration plays; however, the sealing capacity of mudstones in the Sherbrook Group remains unknown.



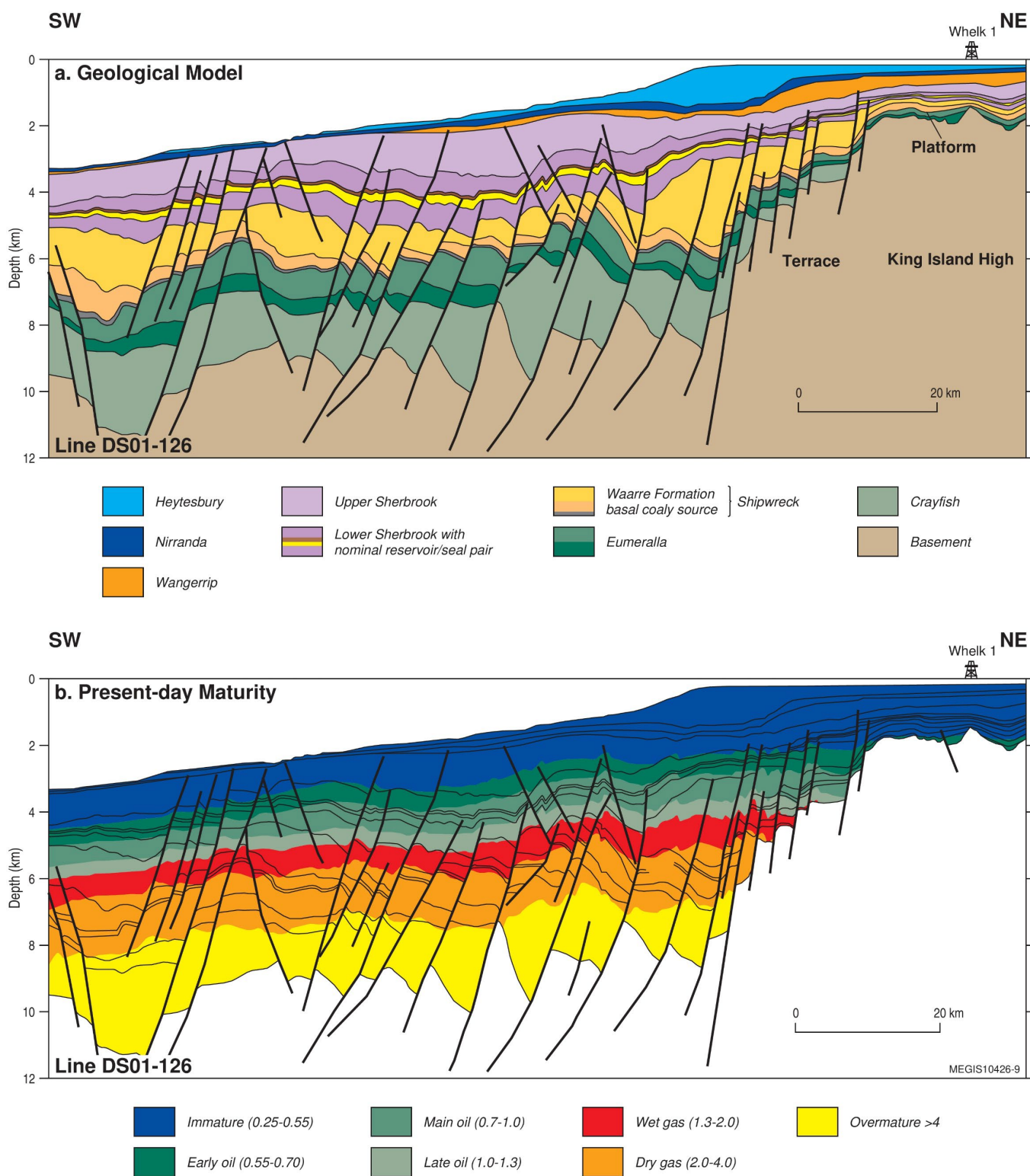


Figure 16 Geological interpretation of Otway sequences along seismic line DS01-126 (a) and modelled present-day maturity for same section (b) (after Stacey et al., 2013).

## Geoscience Australia products and data

A range of Geoscience Australia's publications, data and products cited throughout the text are available via the links provided in the references. Themes include basin geology, stratigraphy, organic geochemistry, petroleum systems and prospectivity. Geoscience Australia's recent Deepwater Otway project, completed in 2024, also provides a listing of the publications, results and related datasets delivered by the study on the [project webpage](#).

### Data discovery tools

- The [National Offshore Petroleum Information Management System \(NOPIMS\)](#) provides access to wells and survey data acquired primarily in Commonwealth waters and submitted under legislation, currently the Offshore Petroleum and Greenhouse Gas Storage Act 2006. This data can be downloaded or packaged on request. NOPIMS has been upgraded and provides access to over 50 years of data submission of well and survey information. It represents more than 1 million records and includes an [interactive mapping tool](#) for data discovery.
- [Geoscience Australia's Data Discovery Portal](#) provides access to Geoscience Australia data and other publicly available data sources as well as a suite of analytical and multi-criteria assessment tools. This includes the [Acreage Release](#) and [Energy](#) personas that allow access to a wide range of geological and geospatial data. Themes include source rock geochemistry, petroleum wells, stratigraphic information, province and basin geology, geophysical survey data coverage and other fundamental geospatial and administrative datasets.
- Geoscience Australia's data and publications search provides access to over 50,000 products, datasets, services and maps. Delivering data of enduring value, these products can be accessed via the eCat data catalogue: <https://ecat.ga.gov.au/geonetwork/srv/eng/catalog.search#/home>

## Marine and environment information

The National Offshore Petroleum Safety and Environmental Management Authority (NOPSEMA) is Australia's independent expert regulator for health and safety, structural (well) integrity and environmental management for offshore petroleum and greenhouse gas storage activities in Commonwealth waters, and in coastal waters where regulatory powers and functions have been conferred. Refer to the [NOPSEMA website](#) for further information relating to the environmental management for offshore petroleum and greenhouse gas storage activities

The following section contains information about the existing marine parks, their special habitat zones and physiographic features within the Otway Basin (Figure 17). The information is provided in support of business decisions with respect to planned exploration and development activities. Potential hazards of note include storms and swell generated by the Southern Ocean, and shallow reefs which pose a hazard for navigation.

### Marine Parks

Australian Marine Parks (Commonwealth reserves proclaimed under the EPBC Act in 2007 and 2013) are located in Commonwealth waters that start at the outer edge of state and territory waters, generally 3 nautical miles (nm) (5.6 km) from the shore, and extend to the outer boundary of Australia's Exclusive Economic Zone, 200 nm (370.4 km) from the shore. Marine parks have also been established by the state and territory governments in their respective waters. The marine parks operate under management plans that provide a balance between protection of the marine environment, and sustainable use of the area. Links to these management plans are provided for each marine park or marine park network in the Otway Basin region.

#### ***Australian Marine Parks: South-east Marine Parks Network***

The South-east Marine Reserves Network comprises 14 Commonwealth marine reserves, together representing examples of the ecosystems of the South-east Marine Region. The network is located within the South-east Marine Region, which incorporates Commonwealth waters extending from near the far south coast of New South Wales, around Tasmania and as far west as Kangaroo Island in South Australia. It includes the Commonwealth waters of Bass Strait and those surrounding Macquarie Island in the Southern Ocean. The Commonwealth marine area starts at the outer edge of state waters, 3 nm (5.6 km) from the shore (territorial sea baseline), and extends to the outer boundary of Australia's exclusive economic zone, 200 nm (370.4 km) from the territorial sea baseline. State and territory jurisdictions extend from the shoreline to 3 nm (5.6 km) offshore.

The South-east Marine Region is recognised as a major marine biogeographic region. When compared to most of the world's marine environments, those of temperate Australia display an enormous diversity of plant and animal species and are believed to have the most diverse marine floral assemblage in the world. High diversity in terms of the number of species is a feature common to many plant and animal communities in the Region. In addition to high diversity, the Region has large numbers of endemic species, that is, species found nowhere else in the world.

Significant variation in water depth and sea-floor features found throughout the South-east Marine Region are contributing factors to the high level of species diversity in the Region. Sections of the continental shelf, including Bass Strait, have a mosaic of rocky reefs and soft sediments. The shelf habitats support a diverse range of species from a broad range of taxonomic groups. The shelf break, which includes the edges of the continental shelf and the upper slope, serves to intensify currents, eddies and upwellings, creating a rich and productive area for biodiversity, including species that are fished commercially and recreationally.

Sea-floor canyons along the continental margin are identified as important ecological features in the Region. Canyons can have steep or rugged topography that provide habitat for sessile invertebrates, such as corals, which in turn attract other organisms including higher order species. Depending on their size and shape, canyons can intensify local currents and the concentration of nutrients to enhance productivity and biodiversity.



Four marine parks within the South-east Marine Parks Network overlies the Otway Basin:

- The [Apollo Commonwealth Marine Reserve](#) zoned as Multiple Use Zone IUCN Category VI. Mining operations, including exploration, are allowed.
- The [Murray Marine Park](#) that is divided into the following zones: a) the National Park Zone (II) where mining operations, including exploration, are prohibited, b) the Habitat Protection Zones (IV), where mining operations, including exploration are generally prohibited, and c) the Multiple Use Zones (VI) where mining operations, including exploration, are allowed.
- The [Nelson Marine Park](#) zoned as National Park Zone (II), mining operations, including exploration, are prohibited.
- The [Zeehan Marine Park](#) that is divided into the following zones: a) the National Park Zone (II), b) the Special Purpose Zone (VI) where mining operations, including exploration, may be permitted, and c) the Multiple Use Zone (VI) where mining operations, including exploration, are allowed

For further information on these marine parks please visit [South-east Network management plan](#)

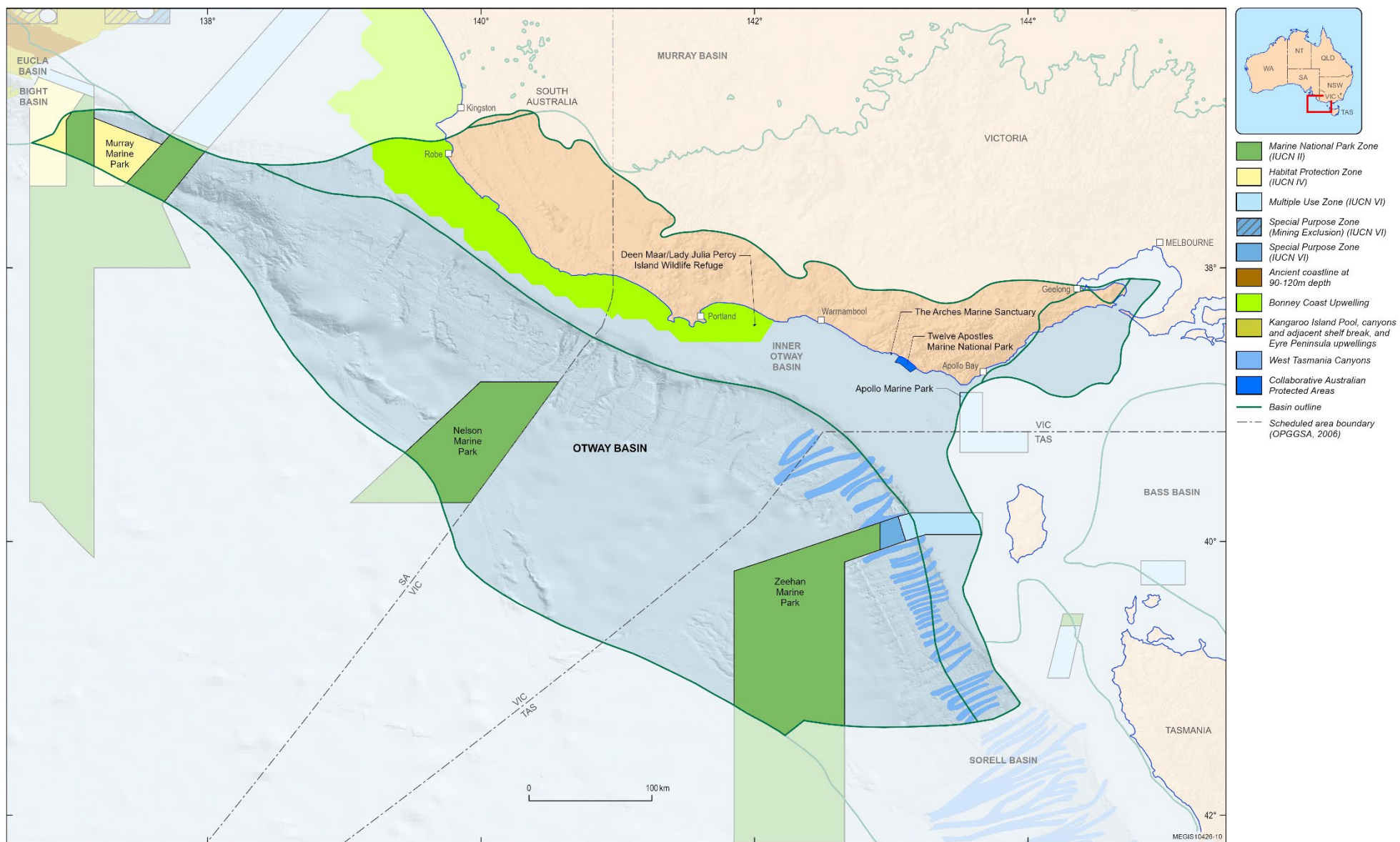


Figure 17 Map showing marine reserves, marine parks, multiple use zones and ecological features in the Otway Basin.

### ***Victorian Marine Protected Areas***

The following Victorian Marine Protected Areas are located in the vicinity of the Otway Basin.

#### ***Discovery Bay Marine National Park***

The [Discovery Bay Marine National Park](#) (2770 ha) is located 20 km west of Portland, and protects part of the largest coastal basalt formation in western Victoria. The park is adjacent to Cape Bridgewater along the coast from Blacks Beach to Whites Beach and offshore to 3 nm (5.6 km). Between Whites Beach and Cape Duquesne the park boundary commences 500 m from the coastline.

#### ***Point Addis Marine National Park***

The [Point Addis Marine National Park](#) (4600 ha) is located about 25 km southwest of Geelong. It extends offshore from the high water mark along 10 km of coastline east of Anglesea, around Point Addis to the eastern end of Bells Beach, and offshore approximately 3 nm (5.6 km) to the limit of Victorian waters. The park includes all waters within these boundaries and extends 200 m beneath the seabed. The park is zoned a National Park IUCN Category II. Category II areas are managed primarily for ecosystem protection and recreation.

#### ***Port Phillip Heads Marine National Park***

The [Port Phillip Heads Marine National Park](#) (3580 ha) is located at the southern end of Port Phillip, about 60 km southwest of Melbourne, and stretches along 40 km of coastline. The park comprises six sections: Swan Bay, Mud Islands, Point Lonsdale, Point Nepean, Popes Eye and Portsea Hole. The park is zoned a National Park IUCN Category II. Category II areas are managed primarily for ecosystem protection and recreation.

#### ***Twelve Apostles Marine National Park***

The [Twelve Apostles Marine National Park](#) (7500 ha) is southeast of Port Campbell between Broken Head and Pebble Point, and extends offshore 3 nm (5.6 km) to the limit of Victorian waters. The park is zoned a National Park IUCN Category II. Category II areas are managed primarily for ecosystem protection and recreation. All forms of extraction are prohibited in the park (Parks Victoria, 2006).

#### ***The Arches Marine Sanctuary***

The [Arches Marine Sanctuary](#) (45 ha) is approximately 600 m offshore from Port Campbell. The sanctuary is in the vicinity of the Twelve Apostles Marine Park, and the two areas are covered by the same management plan.

#### ***Deen Maar (Lady Julia Percy) Island Wildlife Reserve***

The [Deen Maar \(Lady Julia Percy\) Island Wildlife Reserve](#) spans Deen Maar Island (formerly Lady Julia Percy Island), which is located approximately 6 km offshore from the Barwon South West region of Victoria. The island is a low, flat, basaltic volcanic island, rising to around 30-40 m above sea level (Edwards et al., 2004).

### **Biologically important areas**

The Otway Basin overlaps or is close to the following biologically important areas:

- The Antipodean, Black-browed, Buller's, Campbell, Indian Yellow-Nosed, Shy, and Wandering albatross forage in the region
- The Common Diving-Petrel forages in the region year-round, and also breeds on islands in the region from July until January
- Australian Sea Lions forage in the waters over the northern area of the basin



The basin overlaps the migratory corridor of the Pygmy Blue Whale, and the region is also a known important foraging area, with seasonally high density. Southern Right Whales also occur in the region from May to November

The basin overlaps the White Shark distribution area, also used as a breeding nursery and opportunistic feeding area in autumn, winter, and spring. White Sharks generally occur in water depths between 120 m and 1000 m.

The [Australian Marine Spatial Information System](#) and the [Atlas of Living Australia](#) provide further information and visualisations concerning animals and plants recorded in the Otway Basin region.

## Heritage

### *Maritime Heritage*

Australia protects its shipwrecks and associated relics that are older than 75 years through the [Historic Shipwrecks Act 1976](#).

There is one [historic shipwreck protected zone](#) in the Otway Basin region: the screw steamer SS Alert. The SS Alert is located to the west of Cape Schank, where it sank in bad weather in December 1893, whilst on a voyage from Lakes Entrance to Melbourne via Port Albert. The SS Alert is historically significant as one of the worst maritime wrecks in Victorian history and archaeologically significant as no official salvage has taken place such that the wreck still contains the crew and passengers' personal effects. The SS Alert is therefore a rare example of an iron coastal trading vessel that has not been officially salvaged, scuttled or looted, and is representative of the iron vessels engaged in coastal trade around the southern coast of Australia in the late 1800s. The protected zone extends in all directions from the shipwreck, with a radius of 500 m.

There are several additional shipwrecks within the Otway Basin that are not associated with a defined protected zone. These can be identified using the [Australasian Underwater Cultural Heritage Database](#) map search tool.

### *Cultural Heritage*

The Kirrae Wurrung, Gunditj Mara, and Gadabanud—collectively known as Maar (the people)—are the first peoples of southwest Victoria. The Australian Government recognises the responsibilities and interest of Indigenous peoples in ocean environments Indigenous cultural heritage, including protection of Sea Country, is discussed in the [Kooyang Sea Country Plan](#). Kirrae Wurrung Country encompasses the region west of the Gellibrand River (Framlingham Aboriginal Trust and Winda Mara Aboriginal Corporation, 2004).

## Fisheries

Fishing effort varies spatiotemporally in the region based on fishing restrictions, stock status and environmental conditions (Larcombe et al, 2001). The following [Commonwealth fisheries](#) are within the Otway Basin area:

The Bass Strait Central Zone Scallop Fishery operates in the Bass Strait north of Tasmania and extends from the Victoria/New South Wales border around to the Victoria/South Australian border. The fishery is between the Victorian and Tasmanian scallop fisheries that lie within 20 nm (37.0 km) of their respective coasts. The default period for the fishing season is 1 April to 31 December, although the 2018 season opened on 19 July and closed 31 December.

The [Victorian Scallop Fishery](#) extends out to 20 nm (37.0 km) from the high tide mark, excluding bays and inlets. Continued low levels of scallop abundance have resulted in a low Total Allowable Commercial Catch of 135 tonnes since 2015/2016.

The Eastern Tuna and Billfish Fishery extends from Cape York in Queensland to the South Australian/Victoria border. Fishing occurs both in the Australian Fishing Zone (generally between 3 nm and 200 nm [5.6-370.4 km] from the coast) and adjacent high seas. The fishing season generally runs for 12 months, starting on 1 March. However, the 2018 season ran for 10 months from 1 March to 31 December.

The Small Pelagic Fishery extends from the Queensland/New South Wales border, typically outside 3 nm (5.6 km), around southern Australia to a line at latitude 31°S (near Lancelin, north of Perth). The Gippsland Basin intersects the western sub-area of this fishery. The fishing season runs for 12 months, starting on 1 May.

The Southern and Eastern Scalefish and Shark Fishery stretches south from Fraser Island in southern Queensland, around Tasmania, to Cape Leeuwin in southern Western Australia. The fishery comprises major sectors, of which three overlap the Gippsland Basin: the Commonwealth South East Trawl Sector, the Scalefish Hook Sector, and the Shark Hook and Shark Gillnet Sector. The fishing season runs for 12 months, starting on 1 May.

The Southern Bluefin Tuna Fishery covers the entire sea area around Australia, out to 200 nm (370.4 km) from the coast. The fishing season runs for 12 months, starting on 1 December.

The Southern Squid Jig Fishery is located off New South Wales, Victoria, Tasmania and South Australia, and in a small area of oceanic water off southern Queensland. The fishing season runs for 12 months, starting on 1 January.

The following [Victorian commercial fisheries](#) are within the Otway Basin area:

The [Abalone Fishery](#) operates along the majority of the Victorian coastline, in depths to 30 m. The fishing season runs for 12 months, starting on 1 April.

The western zone of the [Rock Lobster Fishery](#) extends from Apollo Bay westward to the border with South Australia. Southern Rock Lobsters are found to depths of 150 m, with most of the catch coming from depths of less than 100 m. Closed seasons are 1 Jun to 15 November for female lobsters, and 15 September to 15 November for male lobsters.

The [Giant Crab Fishery](#) is a small, limited entry fishery with the same boundaries as the western zone of the Rock Lobster fishery. Closed seasons are 1 June to 15 November for female crabs, and 15 September to 15 November for male crabs. The fishery is closely linked to the Rock Lobster fishery.

The [Victorian Wrasse \(Ocean\) Fishery](#) extends along the entire length of the Victorian coastline and out to 20 nm (37.0 km) offshore, except for marine reserves.

## Climate of the region

The region is characterised by a cool temperate climate. Precipitation is delivered throughout the year, and there are few temperature extremes. At the closest onshore weather station (Cape Otway Lighthouse), mean minimum and maximum temperatures were 7.5°C and 21.5°C respectively for the period 1864–2019 (Bureau of Meteorology, 2019). Mean annual rainfall over a 151 year period at Cape Otway Lighthouse is 894.8 mm. The region is at the edge of a known climate change hotspot (Oliver et al, 2013; Hobday and Hartog, 2016).

## Oceanic regime

The shelf in the Otway region is a swell- and storm-dominated open cool-water carbonate platform (Boreen et al 1993; Li et al., 2003). The region has cool temperate waters with complex oceanography due to subpolar influences from the south, subtropical influences from the Leeuwin Current along the Western Australian Coast, and the Great Australian Bight (Commonwealth of Australia, 2015), as well as the influence of Bass Strait immediately to the east. Cool, nutrient-rich water—the ‘Bonney Upwelling’—upwells along the shelf and to the west of the Otway Basin region (between Robe and Portland) between November and April (Integrated Marine and Coastal Regionalisation of Australia, 2006; Butler et al, 2002). The Bonney Upwelling may also be linked to strong storm events throughout the year (Blackman et al, 1987). Mean surface-water temperatures range between 14°C and 18°C. Water temperatures are 2–3°C lower than adjacent bioregions due to the cooling effect of upwelling (Integrated Marine and Coastal Regionalisation of Australia, 2006; Parks Victoria, 2006). The Otway coast is a high wave-energy coastline, consistently impacted by southwesterly swells generated in the Southern Ocean (Barton et al, 2012). Mean annual wave heights of 2.7 m recorded on the coastline cause significant erosion of sea cliffs and pillars (Bird, 1993). The tidal regime is microtidal (0.8 m to 1.2 m) (Parks Victoria, 2003).

## Seabed environments: regional overview

The Otway continental shelf has sediment and sedimentary rock primarily of Palaeogene and Neogene age, with textures and compositions broadly similar to modern sediment. Coastal sediment sources include recent basaltic rock and carbonate sediment; both lithologies are present below sea level, both on the shallow shelf and as reefs. Unconsolidated seabed sediments are generally carbonate sands (Barton et al, 2012; Murray-Wallace and Woodroffe, 2014; see also the Geoscience Australia [Marine Sediments Database](#)). The shelf environment has approximately shelf-edge parallel distribution of surficial sediment facies, with two main facies present. The inner shelf is dominated by hard substrate and palimpsest quartz, bivalve and bryozoan gravels. Unconsolidated sediment cover in this zone is fairly thin or absent (James and Bone, 2011; James et al., 1992). The mid-shelf is dominated by bryozoan sand (Boreen et al, 1993; Harris et al, 2000).

## Ecology

The Otway Basin is part of the Southeast Marine Bioregion which extends from the far south coast of New South Wales to Kangaroo Island. This region hosts high levels of biodiversity and endemism, particularly of macroalgae (Womersley, 1990), and possibly represents one of the most diverse marine floral assemblages in the world (Commonwealth of Australia, 2015). At a regional scale, habitats include kelp forests, temperate seagrass meadows, and rocky reefs, as well as extensive soft sediment ecosystems. These marine habitats support a diverse range of temperate marine plants, invertebrates, fishes, and larger marine animals such as whales, dolphins and seals. Humpback Whales, seabirds and other threatened animals migrate through this region on their way to breeding grounds, and other species such as Blue Whales use this region as a feeding ground (Gill et al, 2011).

At the smaller regional scale of provincial bioregions (cf. Integrated Marine and Coastal Regionalisation of Australia, 2006), the Otway Basin is included in the Western Bass Strait Shelf Transition, which is an area of overlap (i.e. it does not have fauna, flora or ocean conditions distinct from adjacent areas; Commonwealth of Australia, 2015).

## Quaternary geological history

The morphology of the Otway Shelf has been shaped by tectonic uplift, nearshore processes and eustatic changes in sea-level. These processes have resulted in tall cliffs and prominent sea-stacks (the 'Twelve Apostles'), which are composed of mid-Cenozoic limestones (Bird, 1993).

At present, the cliffed coasts of the Otway Shelf are predominantly under destructive stresses from ocean swell waves produced during Southern Ocean storms, providing sediment to the shelf (Porter-Smith et al, 2004). The documented Quaternary sedimentary record and geomorphology of the Otway Shelf are similar to that of a tropical carbonate platform with Holocene and relict sediment overlying Cenozoic and older carbonate sedimentary rocks. However, the Quaternary record on the Otway Shelf is essentially palimpsest, with little recent sedimentation taking place.

Offshore reef patches, remnants of shore platforms, are common on the inner to mid-shelf (Bird, 1993) and extend beyond the limits of coastal waters (Holmes et al, 2007). Remnants of drowned relict Cenozoic limestone stacks, 6 km offshore in 50 m water depths have recently been mapped (Brezore et al, 2016).

## National seabed mapping data and information

Geoscience Australia provides acoustic datasets including bathymetry, backscatter, sidescan sonar and sub-bottom profiles to assist in understanding the shape and composition of the sea floor. Geoscience Australia also maintains the Marine Sediment database ([MARS](#)), comprising information (e.g. percentage mud/sand/gravel, mean grain size, sediment texture) from seabed sediment samples collected during marine surveys between 1905 and 2017.



A compilation of Otway Basin Bathymetry is available for download from: <https://pid.geoscience.gov.au/dataset/ga/144351>. This is made up of the bathymetric surveys detailed in Table 1, below. These data are discoverable and accessible through the [AusSeabed Marine Data Portal](#), an innovative national seabed mapping initiative designed to coordinate data collection efforts in Australian waters and provide open access to quality-controlled seabed data.

Table 1 Otway Basin Bathymetry Surveys

Survey ID:	Survey Name:	SBP	Backscatter
GA-0125	Tasmante Bathymetry Survey		Yes – not processed
GA-0222	Austrea1 Bathymetry Survey	Yes – not processed	Yes – not processed
GA-0236	Auscan1		Yes – not processed
GA-0245	Auscan2		Yes – not processed
GA-0265	SS03/2004		Yes – not processed
GA-1175	SOJN05MV		Yes – not processed
GA-2355	SS04/2004		Yes – not processed
GA-2358	SS07/2004		Yes – not processed
GA-2396	Ausfair-GAB	Yes – not processed	Yes – not processed
GA-2397	SS02/2006	Yes – not processed	Yes – not processed
GA-2423	SS01/2007		Yes – not processed
GA-2425	SS02/2007	Yes – not processed	Yes – not processed
GA-2433	SSST03/2007		Yes – not processed
GA-2463	SS02/2008		Yes – not processed
GA-2464	SS03/2008		Yes – not processed
GA-4304	SST01/2010		Yes – not processed
GA-4324	SST02/2010		Yes – not processed
GA-4368	SS2011_t03		Yes – not processed
GA-4371	SS2011_t04		Yes – not processed
GA-4393	SS2012_t05		Yes – not processed
GA-4409	SS2013_c02		Yes – not processed
GA-4411	SS2013_t02		Yes – not processed
GA-4473	in2016v01	Yes – not processed	Yes – not processed

Survey ID:	Survey Name:	SBP	Backscatter
GA-4484	in2015_c01	Yes – not processed	Yes – not processed
GA-4493	Helen's Rock Patch Test		Yes – not processed
GA-4494	EM2040C Tests		Yes – not processed
GA-4495	Port Fairy Wave Energy		Yes – not processed
GA-4496	Port Campbell Arches Sanctuary		Yes – not processed
GA-4497	Port Campbell Little Penguins		Yes – not processed
GA-4498	Port Campbell Pipeline		Yes – not processed
GA-4800	Point Addis		Yes – not processed
GA-4801	XHMAS Canberra		Yes – not processed
GA-4812	in2017_t02	Yes – not processed	Yes – not processed
GA-4820	in2017_c01	Yes – not processed	Yes – not processed
GA-4846	in2019_t03		Yes – not processed
GA-4849	BF2019_v01		Yes – not processed

Geomorphology Products that have been completed in the Otway Basin include:

- [Zeehan Marine Park Seabed Morphology and Geomorphology \(MapServer\)](#)
- [Submarine canyons and slides in the central-west Otway Basin: their morphology, genesis, links to groundwater discharge and tsunamigenic potential](#)

The MARS database has sediment samples with the Otway Basin. Access to this data can be found at: <https://dbforms.ga.gov.au/pls/www/npm.mars.search>

## Other online information resources

Please follow these links for more detailed information pertaining to the marine and environmental summaries provided in this section.

- [Bureau of Meteorology: climate statistics](#)
- [Environmental Values Viewer](#)
- Australian Marine Parks: [South-east Marine Parks Network](#)
- [Parks Victoria Marine protected areas](#)
- [Commonwealth Fisheries](#)
- [Victorian Fisheries Authority—Commercial Fisheries](#)
- [Historic shipwrecks](#)
- [Protected Matters Search Tool](#)

## References

- 3D ENERGY, 2025a—[Web page] Essington-1 Intersects Two Gas-Bearing Waarre Reservoirs, ASX announcement 17 November 2025, <https://wcsecure.weblink.com.au/clients/3denergi/headline.aspx?headlineid=3681515> (last accessed 27 November 2025)
- 3D ENERGY, 2025b—[Web page] Gas Discovery Confirmed at Essington-1, ASX announcement 20 November 2025, <https://wcsecure.weblink.com.au/clients/3denergi/headline.aspx?headlineid=3681854> (last accessed 27 November 2025)
- 3D ENERGY, 2025c—[Web page] Multi-TCF Gas Prospectivity in the Otway Basin, ASX announcement 30 June 2025, <https://wcsecure.weblink.com.au/pdf/TDO/02961766.pdf> (last accessed 27 November 2025)
- ABBOTT S, CUBITT C, BERNARDEL G, NICHOLSON C, AND NGUYEN D., 2023—Towards a regional understanding of Sherbrook Supersequence gross depositional environments, offshore Otway Basin (extended abstract). In '4th Australasian Exploration Geoscience Conference, Brisbane 2023'. Australian Society of Exploration Geophysicists Extended Abstracts. <https://doi.org/10.5281/zenodo.7980133>
- ABBOTT S, CUBITT C, BERNARDEL G, NICHOLSON C, AND NGUYEN D., 2024—Shipwreck and Sherbrook Supersequence regional gross depositional environments, offshore Otway Basin (extended abstract). Australian Energy Producers Journal 64 (2), S302-S307. <https://10.0.4.47/EP23197>
- AMPLITUDE ENERGY, 2025—[Web page] Annual Report, 2025. <https://amplitudeenergy.com.au/uploads/corporate-governance/2025-Annual-Report.pdf> (last accessed 27 November 2025)
- ARTHUR, M.A., JENKYN, H.C., BRUMSACK, H.-J. AND SCHLANGER, S.O., 1990—Stratigraphy, geochemistry, and paleoceanography of organic carbon-rich Cretaceous sequences. In: Ginsburg, R.N. and Beaudoin, B. (eds) Cretaceous Resources, Events and Rhythms. Kluwer Academic Publishers, 75–119.
- AWE (Australian Worldwide Exploration Limited), 2004—AWE upgrades gas reserves in Casino field, ASX Announcement 24 June, 2004 <https://announcements.asx.com.au/asxpdf/20040624/pdf/3ly9jw0x5py7m.pdf> (last accessed 27 November 2025)
- BARTON, J., POPE, A. AND HOWE, S., 2012—Marine Natural Values Study Vol 2: Marine Protected Areas of the Otway Bioregion. Parks Victoria Technical series No. 75. Parks Victoria, Melbourne.
- BEACH ENERGY, 2020—[Web page] Otway Basin Victoria. <https://www.beachenergy.com.au/vic-otway-basin/> (last accessed 30 May 2021)
- BEACH ENERGY, 2021—[Web page] Artisan 1 Gas Discovery, 22 March 2021. <https://www.asx.com.au/asxpdf/20210322/pdf/44tvzx80xx8zxz.pdf> (last accessed 30 May 2021)
- BEACH ENERGY, 2023—[Web page] Annual Report 2023. [https://beachenergy.com.au/wp-content/uploads/BPT\\_2023\\_Beach\\_Energy\\_Ltd\\_Annual\\_Report.pdf](https://beachenergy.com.au/wp-content/uploads/BPT_2023_Beach_Energy_Ltd_Annual_Report.pdf) (last accessed 27 November 2025)
- BEACH ENERGY, 2025—[Web page] FY26 First Quarter Activities Report [https://beachenergy.com.au/wp-content/uploads/2025/10/BPT\\_FY26\\_First\\_Quarter\\_Activities\\_Report.pdf](https://beachenergy.com.au/wp-content/uploads/2025/10/BPT_FY26_First_Quarter_Activities_Report.pdf) (last accessed 27 November 2025)
- BERNECKER, T., DRISCOLL, J., POWELL, A. AND THOMAS, J.H., 2004—Acreage Release 2004, Victoria, Australia. Department of Primary Industries Victorian Initiative for Minerals and Petroleum Report, 83.
- BERNECKER, T. AND MOORE D.H., 2003—Linking basement and basin fill: implications for hydrocarbon prospectivity in the Otway Basin region. The APPEA Journal, 43(1), 39–58.
- BIRD, E.C.F., 1993—The Coast of Victoria – The Shaping of Scenery. Melbourne University Press. Melbourne.

- BLACKMAN, D.R., HINWOOD, J.B. AND LEONART, G.T., 1987—Temperature anomaly in western Bass Strait. *Australian Journal of Marine and Freshwater Research*, 38, 191-195.
- BLEVIN, J.E. AND CATHRO, D.L., 2008—[Australian Southern Margin Synthesis, Project GA707. Client report to Geoscience Australia by FrOG Tech Pty Ltd.](#)
- BLEVIN, J.E., TRIGG, K.R., PARTRIDGE, A.D., BOREHAM, C.J. AND LANG, S.C., 2005—Tectonostratigraphy and potential source rocks of the Bass Basin. *The APPEA Journal*, 45, 601–621.
- BOREEN, T., JAMES, N.P., WILSON, C. AND HEGGIE, D., 1993—Surficial cool-water carbonate sediments on the Otway continental margin, southeast Australia. *Marine Geology*, 112, 35-56.
- BOREHAM, C.J., BLEVIN, J.E., RADLINSKI, A.P. AND TRIGG, K.R., 2003—Coal as a source of oil and gas: a case study from the Bass Basin, Australia. *The APPEA Journal*, 43(1), 117–148.
- BOREHAM, C.J., HOPE, J.M., JACKSON, P., DAVENPORT, R., EARL, K.L., EDWARDS, D.S., LOGAN, G.A. AND KRASSAY, A.A., 2004—Gas-oil-source correlations in the Otway Basin, southern Australia. In: Boulton, P.J., Johns, D.R. and Lang, S.C. (eds), *Eastern Australasian Basins Symposium II*. Petroleum Exploration Society of Australia, Special Publication, 603–627.
- BOULT, P.J., MCKIRDY, D.M., BLEVIN, J.E., HEGGELAND, R., LANG, S.C. AND VINALL, D.R., 2006—The oil-prone Morum Sub-basin petroleum system, Otway Basin, South Australia. *PESA News*, 80, 24–27.
- BRADSHAW, M.T., 1993—Australian Petroleum Systems. *PESA Journal*, 21, 43–53.
- BREZORE, A., KENNEDY D.M. AND IERODIACONOU, D., 2016—The Drowned Apostles: The Longevity of Sea Stacks over Eustatic Cycles. *Journal of Coastal Research*, Special Issue, 75, 592-596.
- BRYAN, S. E., CONSTANTINE, A. E., STEPHENS, C. J., EWART, A., SCHÖN, R. W., & PARIANOS, J., 1997—Early Cretaceous volcano-sedimentary successions along the eastern Australian continental margin: Implications for the break-up of eastern Gondwana. *Earth and Planetary Science Letters*, 153(1), 85-102.  
[https://doi.org/https://doi.org/10.1016/S0012-821X\(97\)00124-6](https://doi.org/https://doi.org/10.1016/S0012-821X(97)00124-6)
- BUREAU OF METEOROLOGY, 2019—Climate statistics for Australian locations: Summary statistics for Cape Otway Lighthouse. Bureau of Meteorology, Commonwealth of Australia. Available from [http://www.bom.gov.au/climate/averages/tables/cw\\_090015.shtml](http://www.bom.gov.au/climate/averages/tables/cw_090015.shtml)
- CLIFF, D.C.B., TYE, S.C. AND TAYLOR, R., 2004—The Thylacine and Geographe gas discoveries, offshore Eastern Otway Basin. *The APPEA Journal*, 44(1), 441–462.
- COOPER ENERGY, 2019—[Web page] New gas field discovery at Annie [https://www.cooperenergy.com.au/Upload/New\\_gas\\_field\\_discovery\\_at\\_Annie.pdf](https://www.cooperenergy.com.au/Upload/New_gas_field_discovery_at_Annie.pdf) (last accessed 30 May 2021)
- COOPER ENERGY, 2019—[Web page] Quarterly Report for 3 months to 31 March 2019. <https://www.cooperenergy.com.au/Upload/Q3-Final-Apr-29.pdf> (last accessed 30 May 2021)
- COOPER ENERGY, 2020—[Web page] Dombey-1DW1 production test results, ASX announcement, 28 January 2020 <https://announcements.asx.com.au/asxpdf/20200128/pdf/44dk211mw9n8hm.pdf> (last accessed 27 November 2025)
- COOPER, G.T. AND HILL, K.C., 1997—Cross-section balancing and thermochronological analysis of the Mesozoic development of the eastern Otway Basin. *The APPEA Journal*, 37(1), 390–414.
- CUBITT C, ABBOTT S, BERNARDEL G, GUNNING M-E, NGUYEN D, NICHOLSON C, AND STOATE A, 2023—Cretaceous depositional environment interpretation of offshore Otway Basin cores and wireline logs; application to the generation of basin-scale gross depositional environment maps. *The APPEA Journal* 63, S215-S220.  
<https://doi.org/10.1071/AJ22090>
- DUDDY, I.R., 1994—The Otway Basin: thermal, structural and tectonic and hydrocarbon generation histories. In: Finlayson, D.M. (compiler) *NGMA/Petroleum Exploration Society of Australia Otway Basin Symposium*, Melbourne, April 20, 1994: extended abstract, Australian Geological Survey Organisation Record, 1994/14, 35–42.



- DUDDY, I.R., 1997—Focussing exploration in the Otway Basin: understanding timing of source rock maturation. *The APPEA Journal*, 37(1), 178–191.
- DUDDY, I.R., EROUT, B., GREEN, P.F., CROWHURST, P.V. AND BOULT, P.J., 2003.—Timing constraints on the structural history of the western Otway Basin and implications for hydrocarbon prospectivity around the Morum High, South Australia. *The APPEA Journal*, 43(1), 59–83.
- EDWARDS C, RADY T, CUBITT C, KIRK R AND TIAINEN S, 2024—Petroleum Systems Analysis of the Onshore Otway Basin, South Australia. *Australian Energy Producers Journal* 64(S1):S359–S364.  
<https://doi.org/10.1071/EP23090>
- EDWARDS, D.S., STRUCKMEYER, H.I.M., BRADSHAW, M.T. AND SKINNER, J.E., 1999—Geochemical characteristics of Australia's southern margin petroleum systems. *The APPEA Journal*, 39(1), 297–321.
- EDWARDS, J., CAYLEY, R.A., JOYCE, E. B., 2004—Geology and geomorphology of the Lady Julia Percy Island volcano, a late Miocene submarine and subaerial volcano off the coast of Victoria, Australia. *Proceedings of the Royal Society of Victoria*, 116 (1), 15–35.
- ENERGYQUEST, 2020—Energy Quarterly June 2020 Report. Unpublished report. Available at:  
<http://www.energyquest.com.au/reports.php?id=1> (last accessed 30 May 2021).
- ENERGYQUEST, 2022—Energy Quarterly March 2022 Report. Unpublished report. Available at:  
<http://www.energyquest.com.au/reports.php?id=1> (last accessed 30 May 2021).
- ESSO AUSTRALIA, 1975—Morum No. 1, S.A., well completion report. Esso Australia report (unpublished).
- FOSTER, J.D. AND HODGSON, A.J.W., 1995—Port Campbell reviewed: methane and champagne. *The APEA Journal*, 35(1), 418–435.
- GALLAGHER, S.J., TAYLOR, D., APTHORPE, M., STILWELL, J.D., BOREHAM, C.J., HOLDGATE, G.R., WALLACE, M.W. AND QUILTY, P.G., 2005—Late Cretaceous dysoxia in a southern high latitude siliciclastic succession, the Otway basin, southeastern Australia. *Palaeogeography, Palaeoclimatology, Palaeoecology*, 223, 317–348.
- GEARY, G.C. AND REID, I.S.A., 1998—Geology and prospectivity of the offshore eastern Otway Basin, Victoria, for the 1998 Acreage Release. *Victorian Initiative for Minerals and Petroleum Report*, 55, Department of Natural Resources and Environment.
- GEOSCIENCE AUSTRALIA, 2025—Australia's Energy Commodity Resources, 2025 Edition. Geoscience Australia, Canberra. <https://dx.doi.org/10.26186/150608>. <https://www.ga.gov.au/aecr2025>
- GIBSON, G.M., TOTTERDELL, J.M., MORSE, M. P., GONCHAROV, A., MITCHELL, C.H. AND STACEY, A.R., 2012—Basement structure and its influence on the pattern and geometry of continental rifting and breakup along Australia's southern rift margin. Record 2012/047. Geoscience Australia. <https://pid.geoscience.gov.au/dataset/ga/74031>
- GILL, P.C., MORRICE, M.G., PAGE, B., PRIZL, R., LEVINGS, A.H. AND COYNE M., 2011—Blue whale habitat selection and within-season distribution in a regional upwelling system off southern Australia. *Marine Ecology Progress Series*, 421, 243–263.
- GOLDIE DIVKO, L.M., 2015—A review of gas prospectivity: Otway region. Department of Economic Development, Jobs, Transport and Resources, Melbourne, Victoria.
- GRADSTEIN, F. M., OGG, J. G., SCHMITZ, M. D. AND OGG, G. M., 2020—Geologic Time Scale 2020. Elsevier.
- HARRIS, P.T., SMITH, R., ANDERSON, O., COLEMAN, R. AND GREENSLADE, D., 2000—GEOMAT Modelling of continental shelf sediment mobility in support of Australia's regional marine planning process. *AGSO Record*, 2000/41, 53 pp.
- HOBDAV, A. AND HARTOG, J., 2016—[Web page] Sea temperatures and climate change in Victoria. Redmap.  
<http://www.redmap.org.au/article/sea-temperatures-and-climate-change-in-victoria> (last accessed 30 May 2021)

- HODGSON, E.A. AND MELLINS, I., 1973—Snail No. 1 well completion report. Hematite Petroleum Pty. Ltd. Report (unpublished).
- HOLFORD, S.P., HILLIS, R.R., DUDDY, I.R., GREEN, P.F., STOKER, M.S., TUITT, A.K., BACKE, G. AND MACDONALD, J.D., 2011—Cenozoic post-breakup compressional deformation and exhumation of the southern Australian margin. *The APPEA Journal*, 51(1), 613–638.
- HOLFORD, S.P., HILLIS, R.R., DUDDY, I.R., GREEN, P.F., TUITT, A.K. AND STOKER, M.S., 2010—Impacts of Neogene–Recent compressional deformation and uplift on hydrocarbon prospectivity of the passive southern Australian margin. *The APPEA Journal*, 50(1), 267–285.
- HOLMES, K.W., RADFORD, B., VAN NIEL, K.P., KENDRICK, G.A. AND GROVE S.L., 2007—Mapping the Benthos in Victoria's Marine National Parks, Volume 4: Twelve Apostles Marine National Park, Parks Victoria, Melbourne.
- INTEGRATED MARINE AND COASTAL REGIONALISATION OF AUSTRALIA, 2006—Integrated Marine and Coastal Regionalisation of Australia: an ecosystem based classification for marine and coastal environments. Version 4. Environment Australia, Commonwealth Department of the Environment, Canberra.
- JAMES, N.P., BONE, Y., 2011—Carbonate production and deposition in a warm-temperate macroalgal environment, Investigator Strait, South Australia. *Sedimentary Geology*, 240(1-2), 41–53.
- JAMES, N.P., BONE, Y., VON DER BORCH, C.C., AND GOSTIN, V.A., 1992—Modern carbonate and terrigenous clastic sediments on a cool water, high energy, mid-latitude shelf: Lacepede, southern Australia. *Sedimentology*, 39(5), 877–903.
- JENKYN, H.C., 2010—Geochemistry of oceanic anoxic events. *Geochemistry, Geophysics, Geosystems*, 11(3), Q03004, doi:10.1029/2009GC002788.
- KELMAN, A.P., BERNECKER, T., SMITH, T., OWEN, K., TOTTERDELL, J. AND PARTRIDGE, A.D., 2015—Otway and Sorell Basins Biozonation and Stratigraphy Chart 2015. Geoscience Australia, Canberra.  
<http://pid.geoscience.gov.au/dataset/ga/83216>
- KRASSAY, A.A., CATHRO, D.L. AND RYAN, D.J., 2004—A regional tectonostratigraphic framework for the Otway Basin. In: Boulton, P.J., Johns, D.R. and Lang, S.C. (eds), *Eastern Australasian Basins Symposium II. Petroleum Exploration Society of Australia, Special Publication*, 97–116.
- LARCOMBE, J.W.P., MCLOUGHLIN, K.J. AND TILZEY, R.D.J., 2001—Trawl operations in the South East Fishery, Australia: spatial distribution and intensity. *Marine and Freshwater Research*, 52, 419–430.
- LAVIN, C.J., 1997—The Maastrichtian breakup of the Otway Basin margin - a model developed by integrating seismic interpretation, sequence stratigraphy and thermochronological studies. *Exploration Geophysics*, 28, 252–259.
- LAVIN, C.J., 1998—Geology and prospectivity of the western Victorian Voluta Trough, Otway Basin, for the 1998 Acreage Release. Victorian Initiative for Minerals and Petroleum Report 57, Department of Natural Resources and Environment.
- LI, Q., JAMES, N.P. AND MCGOWRAN, B., 2003—Middle and Late Eocene Great Australian Bight lithostratigraphy and stepwise evolution of the southern Australian continental margin. *Australian Journal of Earth Sciences*, 50(1), 113–128. <https://doi.org/10.1046/j.1440-0952.2003.00978.x>
- LOVIBOND, R., SUTTILL, R.J., SKINNER, J.E. AND ABURAS, A.N., 1995—The hydrocarbon potential of the Penola Trough, Otway Basin. *The APEA Journal*, 35(1), 358–371.
- LOYZ ENERGY LTD, 2017—[Web page] Transformative growth. Loyz Energy Limited Annual Report 2017. <http://loyzenergy.listedcompany.com/misc/ar2017/index.html> - 11 (last accessed 30 May 2021).
- LUXTON, C.W., HORAN, S.T., PICKAVANCE, D.L. AND DURHAM, M.S., 1995—The La Bella and Minerva gas discoveries, offshore Otway Basin. *The APEA Journal*, 35(1), 405–417.

- MEHIN, K. AND CONSTANTINE, A.E., 1999—Hydrocarbon potential of the western onshore Otway Basin in Victoria: 1999 Acreage Release. Victorian Initiative for Minerals and Petroleum Report 62. Department of Natural Resources and Environment.
- MEHIN, K. AND LINK, A.G., 1994—Source, migration and entrapment of hydrocarbons and carbon dioxide in the Otway Basin, Victoria. *The APPEA Journal*, 34(1), 439–459.
- MEHIN, K. AND LINK, A.G., 1997a—Kitchens, kettles and cups of hydrocarbons, Victorian Otway Basin. *The APPEA Journal*, 37(1), 285–300.
- MEHIN, K. AND LINK, A.G., 1997b—Late Cretaceous source rocks offshore Otway Basin, Victoria and South Australia. Victorian Initiative for Minerals and Petroleum Report 43, Department of Natural Resources and Environment.
- MITCHELL, M.M., 1997—Elevated mid-Cretaceous palaeotemperatures in the western Otway Basin: consequences for hydrocarbon generation models. *The APPEA Journal*, 37(1), 505–523.
- MURRAY-WALLACE, C.V. AND WOODROFFE, C.D. 2014—Quaternary sea-level changes: a global perspective. Cambridge University Press, Cambridge 484pp.
- NICHOLSON C, ABBOTT S, BERNARDEL G, AND GUNNING M-E, 2022—Stratigraphic framework and structural architecture of the upper Cretaceous in the deep-water Otway Basin – implications for frontier hydrocarbon prospectivity (extended abstract). *The APPEA Journal* **62**, S467-S473. <https://doi.org/10.1071/AJ21072>
- NICHOLSON C, ABBOTT ST, BERNARDEL G, AND POUDJOM-DJOMANI Y, 2024—A new perspective on regional structural architecture across the offshore Otway Basin (extended abstract). *The AEP Journal* **64**(S1), S416–S422. <https://doi.org/10.1071/EP23201>.
- NOPSEMA, 2019—[Web page] Otway Basin 2DMC Marine Seismic Survey [https://info.nopsema.gov.au/environment\\_plans/9/show\\_public](https://info.nopsema.gov.au/environment_plans/9/show_public) (last accessed 30 May 2021).
- O'BRIEN, G.W., BOREHAM, C.J., THOMAS, H. AND TINGATE, P.R., 2009—Understanding the critical success factors determining prospectivity, Otway Basin, Victoria. *The APPEA Journal*, 49(1), 129–170.
- OLIVER, E.C.J., WOTHERSPOON, S.J., CHAMBERLAIN, M.A. AND HOLBROOK, N.J., 2013—Projected Tasman Sea extremes in sea surface temperature through the twenty-first century. *Journal of Climate*, 27, 1980–1998.
- ORIGIN ENERGY LIMITED, 2013—[Web page] Production commences from Otway Gas Project's Geopraphe Field. <https://www.originenergy.com.au/about/investors-media/media-centre/production-commences-otway-gas-geopraphe-field-20130729.html> (last accessed 30 May 2021).
- ORIGIN ENERGY LIMITED, 2014—[Web page] Origin confirms new gas discovery offshore Victoria. <https://www.originenergy.com.au/about/investors-media/media-centre/origin-confirms-new-gas-discovery-offshore-victoria-20141209.html> (last accessed 30 May 2021).
- ORIGIN ENERGY LIMITED, 2015—[Web page] Quarterly Production Report June 2015. <https://www.originenergy.com.au/about/investors-media/reports-and-results/quarterly-production-report-20150731.html> (last accessed 30 May 2021).
- PALMOWSKI D, HILL K, HOFFMAN N., 2004—Structure and hydrocarbons in the Shipwreck Trough, Otway Basin: half-graben and gas fields abutting a continental transform. *The APPEA Journal* 44, 417–440. <https://doi.org/10.1071/AJ03016>
- PARKER, G.J., 1995—Early Cretaceous stratigraphy along the northern margin of the Otway Basin. Victorian Initiative for Minerals and Petroleum Report 23. Department of Agriculture, Energy and Minerals.
- PARKER, K.A., 1992—The exploration and appraisal history of the Katnook and Ladbroke Grove gas fields, onshore Otway Basin, South Australia. *The APEA Journal*, 32(1), 67–85.
- PARKS VICTORIA, 2003—Victoria's System of Marine National Parks and Marine Sanctuaries. Management Strategy 2003 - 2010. Parks Victoria and the Department of Sustainability and Environment, Melbourne.

- PARKS VICTORIA, 2006—Twelve Apostles Marine National Park and The Arches Marine Sanctuary Management Plan.
- PERINCEK, D. AND COCKSHELL, C.D., 1995—The Otway Basin: Early Cretaceous rifting to Neogene inversion. The APEA Journal, 35(1), 451–466.
- PORTER-SMITH, R., HARRIS, P.T., ANDERSON, O.B., COLEMAN, R., GREENSLADE, D. AND JENKINS, C.J., 2004—Classification of the Australian continental shelf based on predicted sediment threshold exceedance from tidal currents and swell waves. Marine Geology, 211, 1-20.
- REID, I.S.A., GEARY, G.C. AND CONSTANTINE, A., 2001—Hydrocarbon prospectivity of areas V01-1, V01-2 and V01-3, offshore Otway Basin, Victoria, Australia: 2001 acreage release. Victorian Initiative for Minerals and Petroleum Report, 68. Department of Natural Resources and Environment.
- RESOURCES VICTORIA, 2025—2025 petroleum exploration permit areas – Otway and Gippsland basins. <https://resources.vic.gov.au/geology-exploration/oil-gas/How-to-get-a-petroleum-exploration-permit/apply-for-a-petroleum-exploration-permit-tender-2025> (last accessed 10 December 2025)
- ROGERS, B., 2013—[Web page] Loyz Energy Limited, qualified person report: India, New Zealand, Australia and the Philippines. <https://elementalgroup.com/wp-content/uploads/2018/05/Loyz-2013-QPR-rev1.2.pdf> (last accessed 30 May 2021).
- SA-DEM (SOUTH AUSTRALIAN DEPARTMENT OF ENERGY AND MINING), 2025—Otway Basin Acreage Release Blocks OT2025 RSEL-A to E, GSEL-A to C and GEL-A. <https://www.energymining.sa.gov.au/industry/energy-resources/licensing-and-land-access/onshore-licensing/acreage-releases/ot2025-otway-acreage-release> (last accessed 27 November 2025)
- SCHENK O, GROSJEAN E, EDWARDS DS, BOREHAM CJ, WEST T, AND KARVELAS A , 2021a—New insights into the deep-water Otway Basin – part 3. Petroleum system modelling. The APPEA Journal **61** (2), 665-672. <https://10.0.4.47/AJ20078>
- SCHENK O, KARVELAS A, WEST T, AND KORNPIHL, 2021b—Otway basin regional study report. Schlumberger Australia Pty Ltd for Geoscience Australia, Canberra. Downloadable from <https://dnxxuwuw8tglo.cloudfront.net/Surveys/D00019710.zip>
- SCHENK O, GROSJEAN E, EDWARDS DS, BOREHAM CJ, WEST T, KARVELAS A, AND KORNPIHL D, 2023—Petroleum system modelling of the deep-water Otway Basin. In '4th AEGC: Geoscience-Breaking New Ground, 13-18 March 2023, Brisbane Convention and Exhibition Centre', Vol. 2023. Australian Society of Exploration Geophysicists Extended Abstracts. <https://doi.org/10.5281/zenodo.7980139>
- SHELL DEVELOPMENT, 1967—Nerita No. 1, offshore Victoria, well completion report. Shell Development (Australia) Pty. Ltd report (unpublished).
- SPRIGG, R.C., 1986—A history of the search for commercial hydrocarbons in the Otway Basin Complex. In: GLENIE, R.C. (editor), Second Southeastern Australia Oil Exploration Symposium, Petroleum Exploration Society of Australia 1985, 173–200.
- STACEY, A.R., MITCHELL, C.H., STRUCKMEYER, H.I.M., TOTTERDELL, J.M., 2013—Geology and hydrocarbon prospectivity of the deepwater Otway and Sorell basins, offshore southeastern Australia. Record 2013/002. Geoscience Australia. <https://pid.geoscience.gov.au/dataset/ga/74603>
- STRONG, P.; CUBITT, C. 2024—Play mapping workflow – a practical example from the onshore Otway Basin, South Australia. Geological Survey Geoscience Publication. Government of South Australia. <https://pid.sarig.sa.gov.au/document/mesac1242>
- SUBRAMANIAN, R., 2004—Hill 1 Interpreted Data Report. Santos Ltd report (unpublished).
- SUBRAMANIAN, R., 2005—Amrit 1 Interpreted Data Report. Santos Ltd report (unpublished).



- SUMMONS, R.E., ZUMBERGE, J.E., BOREHAM, C.J., BRADSHAW, M.T., BROWN, S.W., EDWARDS, D.S., HOPE, J.M. AND JOHNS, N., 2002—The Oils of Eastern Australia. Geoscience Australia, Canberra.  
<http://pid.geoscience.gov.au/dataset/ga/68754>.
- TASSONE, D. R., HOLFORD, S. P., DUDDY, I. R., GREEN, P. F. AND HILLIS, R. R., 2014—Quantifying Cretaceous–Cenozoic exhumation in the Otway Basin, southeastern Australia, using sonic transit time data: Implications for conventional and unconventional hydrocarbon prospectivity. AAPG Bulletin, V. 98, 67–117.
- TOTTERDELL, J.M., GIBSON, G.M., STACEY, A.R., MITCHELL, C.H., MORSE, M.P., NAYAK, G.K. AND KUSZNIR, N.J., 2012—The structure of Australia's southern rifted margin: basement architecture, rifting processes and basin development. Proceedings of the 34th International Geological Congress 2012, Brisbane, Australia, Poster and Abstract, 2346.
- TOTTERDELL, J., HALL, L., HASHIMOTO, T., OWEN, K., BRADSHAW, M., 2014—Petroleum geology inventory of Australia's offshore frontier basins. Record 2014/009. Geoscience Australia.  
<http://dx.doi.org/10.11636/Record.2014.009>
- TOTTERDELL, J.M., STRUCKMEYER, H.I.M., BOREHAM, C.J., MITCHELL, C.H., MONTEIL, E. AND BRADSHAW, B.E., 2008—Mid–Late Cretaceous organic-rich rocks from the eastern Bight Basin: implications for prospectivity. In: Blevin, J.E., Bradshaw, B.E. and Uruski, C. (editors), Eastern Australasian Basins Symposium III. Petroleum Exploration Society of Australia, Special Publication, 137–158.
- TRUPP, M., CRABTREE, R. AND LANKI, C., 1993—Wild Dog 1 well completion report, Torquay Sub-basin VIC/P28. Shell Company of Australia Ltd report (unpublished).
- TRUPP, M.A., SPENCE, K.W. AND GIDDING, M.J., 1994—Hydrocarbon prospectivity of the Torquay Sub-basin, Offshore Victoria. The APEA Journal, 34(1), 479–494.
- VAN AARSEN, BGK, 2020—[Petroleum systems modelling, Otway Basin, Victoria. VGP Technical Report 48](#). Geological Survey of Victoria, Department of Jobs, Precincts and Regions, Melbourne, Victoria, 88 pp.
- VICTORIAN STATE GOVERNMENT, 2018—[Web page] Protected areas <https://www.wildlife.vic.gov.au/our-wildlife/whales,-dolphins-and-seals/protected-areas> (last accessed 30 May 2021).
- VICTORIAN STATE GOVERNMENT, 2023—[Web page] Victorian Gas Program.  
<https://resources.vic.gov.au/projects/past-projects/victorian-gas-program> (last accessed 26 November 2025)
- VICTORIAN STATE GOVERNMENT, 2025—[Web page] Restart of onshore conventional gas industry in Victoria.  
<https://earthresources.vic.gov.au/projects/onshore-conventional-gas-restart> (last accessed 26 November 2025)
- VIVA ENERGY, 2025—[Web page] Viva Energy Hub Gas Terminal  
<https://www.vivaenergy.com.au/energy-hub/viva-energy-hub-gas-terminal> (last accessed 26 November 2025)
- VOPAK, 2025—[Web page] Victoria Energy Terminal  
<https://victoriaenergyterminal.com.au/theproject> (last accessed 26 November 2025)
- WOMERSLEY, H.B.S., 1990—Biogeography of Australasian marine macroalgae, In: Clayton, M.N., King, R.J. (Eds.), Biology of Marine Plants. Longman Cheshire, Melbourne, pp. 266–295.



